



# Compartment Review Presentation

## Traverse City Forest Management Unit

Compartment 61155

Entry Year: 2026

Acreage: 2,429

County: Kalkaska

Management Area: Kalkaska Sandy Moraines

---

**Stand Examiner:** Thomas Peterson III

### Legal Description:

T26N R8W Sections 7, 8, 9, and 10

### Identified Planning Goals:

Vegetation management in the Boardman Plains management area will provide forest products; maintain or enhance wildlife habitat; protect areas of unique character including the Boardman River (a designated natural river) and threatened, endangered and special concern species; and provide for forest-based recreational uses. Timber management objectives for this 10-year planning period include improving the age-class structure of aspen; increasing regeneration of oak; working toward balancing the red pine age-class structure; wildlife values; and continued production of wood products. Wildlife habitat management objectives include perpetuating early-successional communities for species adapted to young forests for hunting and other wildlife-related recreation opportunity. Expected trends within this 10-year planning period are: increased recreational pressure; increased oil and gas development; an increased wildland/urban interface; a need to restore oak/pine barrens communities; invasive plant control; and the conversion of poor oaks sites to mixed pine/oak sites.

### Soil and topography:

Much of the compartment sits on Rubicon or Croswell sands with Tawas-Lupton, Ausable-Bowstring, or Kinross mucks in the stream corridors and low-lying areas. Most of the compartment is relatively flat.

### Ownership Patterns, Development, and Land Use in and Around the Compartment:

Most of the compartment is surrounded by State land except for the east side of Section 10 and parts of the south sides of Sections 8 and 9. The village of South Boardman is less than one mile south. SBA Communications has leased part of Section 10 SWSW for a communications tower. A relatively large underground pipeline and aboveground powerline traverse the compartment.

### Unique Natural Features:

No Unique Natural Features known.

### Archeological, Historical, and Cultural Features:

There are known concerns within the compartment. All proposed management activities have taken these concerns into consideration.

### Special Management Designations or Considerations:

The South Branch of the Boardman River and Taylor Creek are Designated Natural Rivers. These shall be protected by a 100' vegetated buffer per the Boardman River Natural River Plan. The South Branch Barrens SCA is just to the west in Grand Traverse County. Two stands in this compartment are proposed for restoration and inclusion in the the SCA.

### Watershed and Fisheries Considerations:

This compartment contains portions of the South Branch of the Boardman River and Taylor Creek. Both are Designated Natural Rivers and Designated Trout Streams. These streams support self-sustaining populations of brown, brook, and rainbow trout. Suitable buffers (as outlined in Water Quality Management Practices on Forest Land) should be applied to treatment areas adjacent to both of these waterbodies.

### Wildlife Habitat Considerations:

Compartment 155 is located on the west edge of Kalkaska County. The glacial geology underlying this area consists of 2 outwash plains, one excessively drained (5111) and one poorly drained (5131). US-131 cuts across the extreme SE corner of the compartment, but only a small piece of state land is isolated. Taylor Creek and the South Branch of the Boardman River run through the compartment and both represent important riparian corridors. State ownership is almost 100% with only two small parcels of private at the east end.

Most of the compartment lies on the broad, flat outwash plain (5111). The sandy soil found here was historically the setting for large wildfires. These fires sustained a variety of fire driven communities, mainly conifer forests at the time of the GLO surveys. Present habitat types include aspen of various ages interspersed with a few grassy openings, upland brush stands, natural and planted pine, and several oak communities. Timber harvests should be designed to mimic wildfires of

various intensities, when possible. Timber harvests should utilize pine and oak as leave trees and islands. The creation of dead and down logs should also be included in some sales. Standing dead timber is usually left during harvest operations unless deemed a safety hazard. Some species found in these early to mid-successional communities include white-tailed deer, ruffed grouse, eastern bluebird, smooth green snake, long-tailed weasel, and red-tailed hawk. The S. Brach of the Boardman River runs through this sandy outwash plain. A narrow strip of lowland conifers and lowland brush are found along the river.

A small inclusion of outwash plain with poorly drained and an excessively drained soil (5131) makes its way into the compartment from the SW. This variation of moisture content supports many habitat types including: mixed upland and lowland aspen communities, bogs, lowland brush, and lowland conifers. Taylor Creek and the Taylor Creek Deer Yard are found here. Wildlife species utilizing this mosaic of basically wetland habitats include white-tailed deer, yellow warbler, mink, northern ribbon snake, and wood frog.

### **Mineral Resource and Development Concerns and/or Restrictions**

Surface sediments consist of glacial outwash sand and gravel and postglacial alluvium. The glacial drift thickness varies between 400 and 600 feet. Beneath the glacial drift is the Mississippian Coldwater Shale. The Coldwater has no economic use. Gravel pits are located in Section 16 and potential is considered good. The compartment is south of the prolific Niagaran reef trend. Several dry hole wells were drilled in the compartment. All state minerals are currently leased. There may be Antrim Shale gas potential.

### **Vehicle Access:**

There is sufficient vehicle access throughout the compartment, other than the wetland stream corridors. A short stretch of US-131 crosses the compartment in Section 10. Boardman River Road, a good gravel county road, bisects the compartment.

### **Survey Needs:**

There are no survey needs at this time.

### **Recreational Facilities and Opportunities:**

The Grand Traverse to Leetsville MCCCT runs through Section 8. Snowmobile Trail #55 runs through Sections 7 and 8 on the path of an underground pipeline. Appropriate trail protection specifications should be added to timber sale contracts to reduce potential impacts to these trails where treatments are prescribed. Other recreational opportunities include hunting and fishing. (T.M.N. 5/15/14)

### **Fire Protection:**

The dry pine stands in the southwest part of this compartment present the greatest potential for wildfire. Risk is low in the vast swamps along the South Branch of the Boardman River and Taylor Creek. Fire protection would be provided by the Kalkaska FRD office and the Fife Lake Fire Department. This compartment is within Zone 6 North zone dispatch area, meaning additional units would be dispatched from the Traverse City and Manton offices depending on fire danger rating.

### **Additional Compartment Information:**

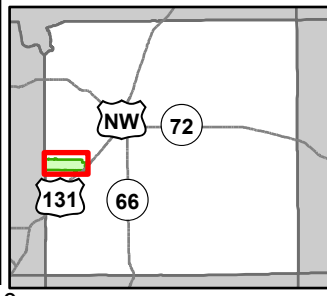
#### **The following reports from the Inventory are attached:**

- Total Acres by Cover Type and Age Class**
- Cover Type by Harvest Method**
- Proposed Treatments – No Limiting Factors**
- Proposed Treatments – With Limiting Factors**
- Stand Details (Forested and Nonforested)**
- Dedicated and Proposed Special Conservation Areas**
- Site Condition Details**

#### **The following information is displayed, where pertinent, on the attached compartment maps:**

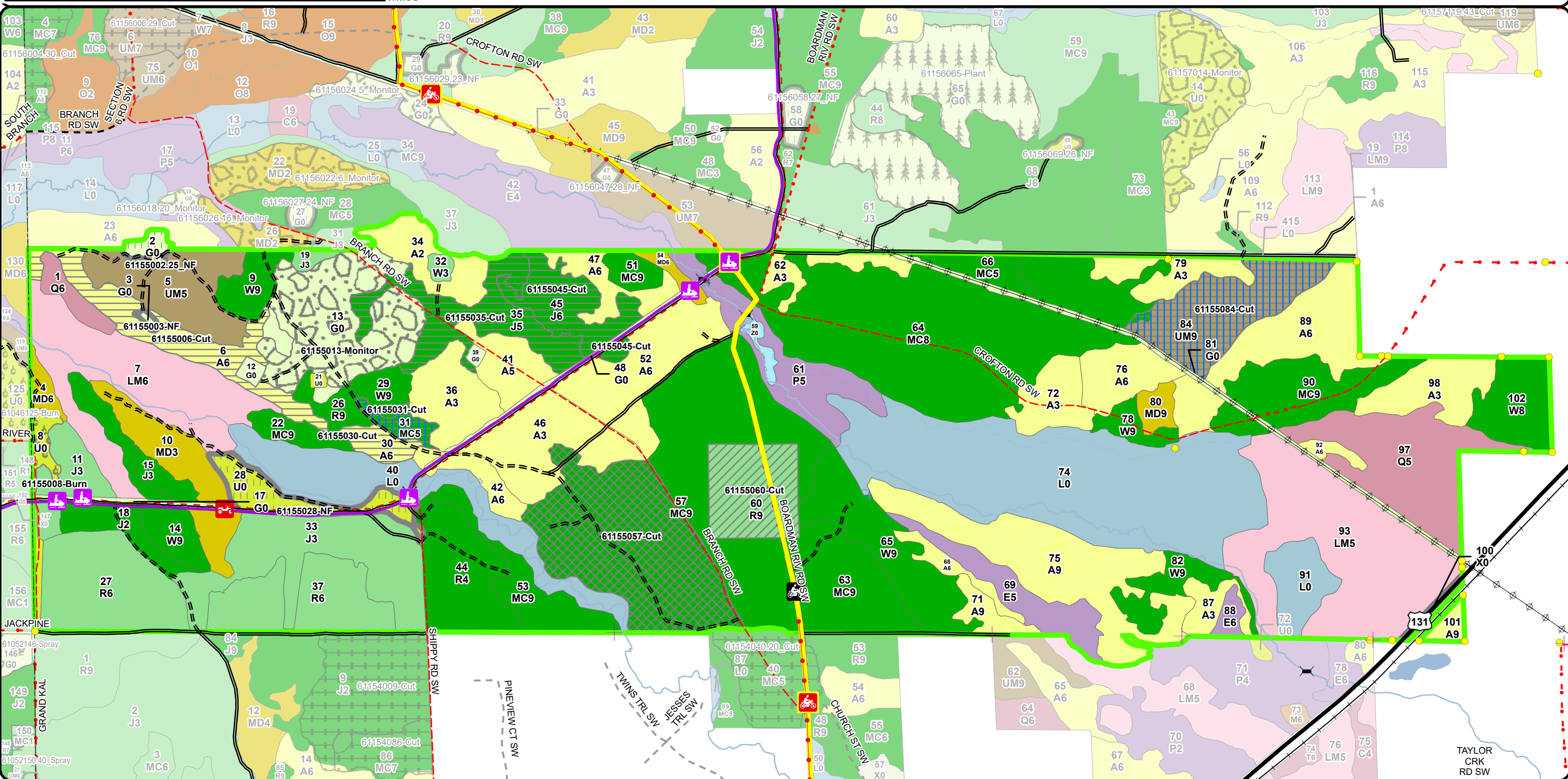
- Base feature information, stand boundaries, cover types, and numbers**
- Proposed treatments**
- Site condition boundaries**
- Details on the road access system**

**Cover Type & Treatments Map**



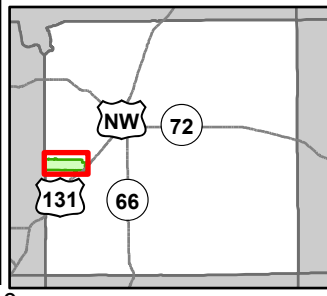
Compartment: 61155  
 T26N R8W Sections 7, 8, 9, and 10  
 County: Kalkaska  
 Unit: Traverse City  
 Mgmt Area: Kalkaska Sandy Moraines  
 YOE: 2026  
 Acres: 2428.6 GIS Calculated  
 Examiner: Thomas Peterson III  
 Map Revised: 10/14/2024  
 Map Phase: Post Review

- |                                                                                                                                                                                                                                                                               |                                                                                                                                                                                                                                                                                                                                                       |                                                                                                                                                                                                                                                                                                                                                       |                                                                                                                                                                                                                                                                                                                                                                            |                                                                                                                                                                                                                                                                                                                                                                  |
|-------------------------------------------------------------------------------------------------------------------------------------------------------------------------------------------------------------------------------------------------------------------------------|-------------------------------------------------------------------------------------------------------------------------------------------------------------------------------------------------------------------------------------------------------------------------------------------------------------------------------------------------------|-------------------------------------------------------------------------------------------------------------------------------------------------------------------------------------------------------------------------------------------------------------------------------------------------------------------------------------------------------|----------------------------------------------------------------------------------------------------------------------------------------------------------------------------------------------------------------------------------------------------------------------------------------------------------------------------------------------------------------------------|------------------------------------------------------------------------------------------------------------------------------------------------------------------------------------------------------------------------------------------------------------------------------------------------------------------------------------------------------------------|
| <ul style="list-style-type: none"> <li> Berms</li> <li> Bridges</li> <li> Culvert</li> <li> Survey Grade Corners</li> <li> Remonumented Section Corners</li> <li> Motorcycle Trails (SOS License)</li> <li> Motorcycle Trails (DNR License)</li> <li> MCCCT Trails</li> </ul> | <ul style="list-style-type: none"> <li> ORV Routes</li> <li> Snowmobile Trails</li> <li> Designated ORV Routes</li> <li> Designated MCCCT Trails</li> <li> DNR - Secondary Forest Road</li> <li> DNR - Forest Access Route</li> <li> Federal / State Highway</li> <li> Federal / State - Dirt / Gravel Road</li> <li> County - Gravel Road</li> </ul> | <ul style="list-style-type: none"> <li> County - Dirt Road (Seasonal)</li> <li> Private - Dirt / Gravel Road</li> <li> Active Railroads</li> <li> Intermittent Stream</li> <li> Lake/Pond</li> <li> Perennial River</li> <li> Powerline</li> <li> Lakes and Rivers</li> <li> Compartment Boundary</li> <li> Selection (Group, Single Tree)</li> </ul> | <ul style="list-style-type: none"> <li> Clearcut (w/Reserves)</li> <li> Prescribed Burn</li> <li> Seed Tree (w/Reserves)</li> <li> Thinning (Crown, Low, Systematic)</li> <li> Regeneration Survey</li> <li> Opening Maintenance</li> <li> 413 - Aspen Types</li> <li> 419 - Mixed Upland Deciduous</li> <li> 421 - Planted Pines</li> <li> 422 - Natural Pines</li> </ul> | <ul style="list-style-type: none"> <li> 430 - Upland Mixed Forest</li> <li> 611 - Lowland Deciduous Forest</li> <li> 612 - Lowland Coniferous Forest</li> <li> 613 - Lowland Mixed Forest</li> <li> 122 - Roads/Parking Lot</li> <li> 310 - Herbaceous Openland</li> <li> 330 - Low Density Trees</li> <li> 500 - Water</li> <li> 622 - Lowland Shrub</li> </ul> |
|-------------------------------------------------------------------------------------------------------------------------------------------------------------------------------------------------------------------------------------------------------------------------------|-------------------------------------------------------------------------------------------------------------------------------------------------------------------------------------------------------------------------------------------------------------------------------------------------------------------------------------------------------|-------------------------------------------------------------------------------------------------------------------------------------------------------------------------------------------------------------------------------------------------------------------------------------------------------------------------------------------------------|----------------------------------------------------------------------------------------------------------------------------------------------------------------------------------------------------------------------------------------------------------------------------------------------------------------------------------------------------------------------------|------------------------------------------------------------------------------------------------------------------------------------------------------------------------------------------------------------------------------------------------------------------------------------------------------------------------------------------------------------------|





**Cover Type & Treatments Map**



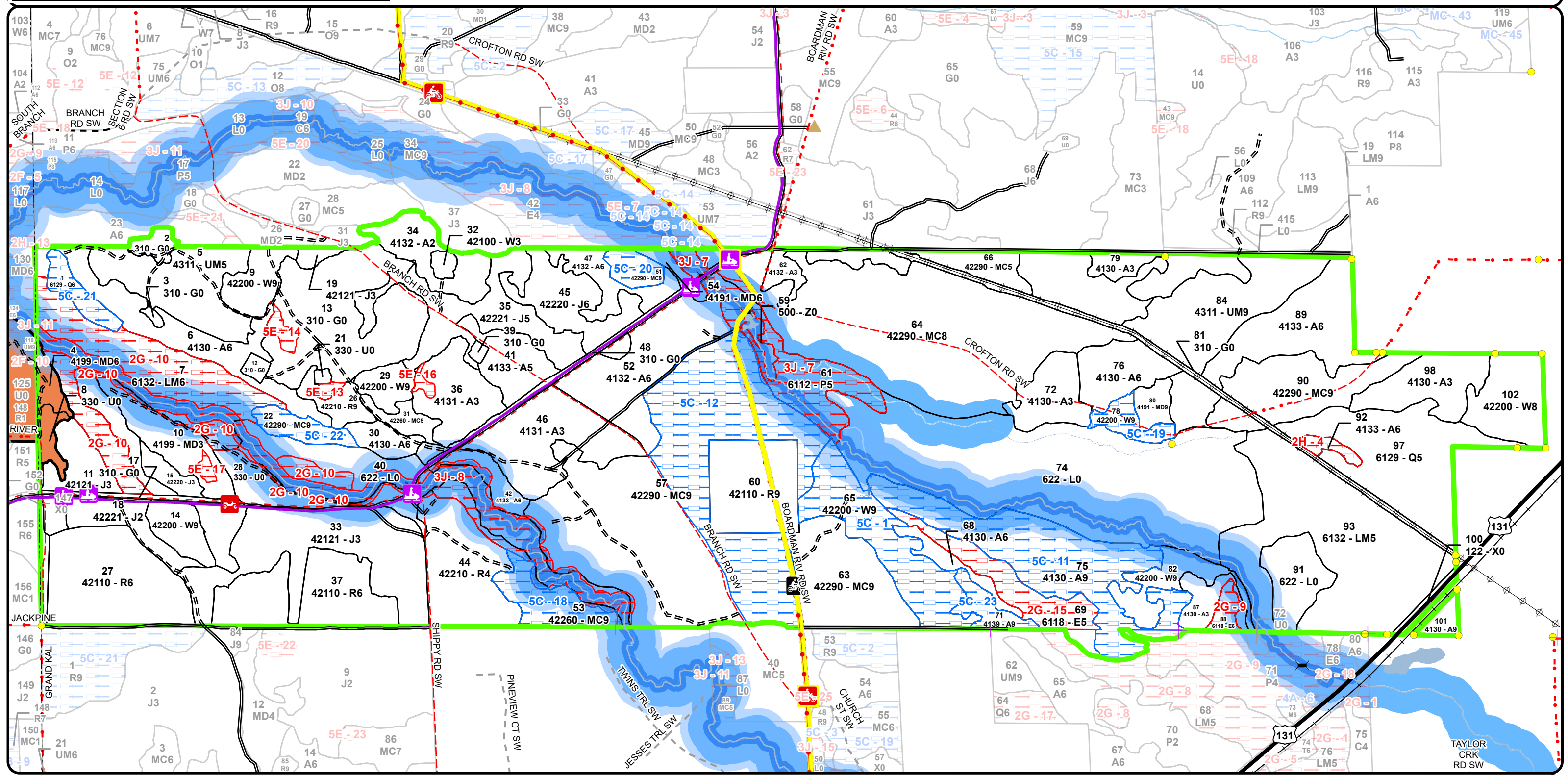
Compartment: 61155  
 T26N R8W Sections 7, 8, 9, and 10  
 County: Kalkaska  
 Unit: Traverse City  
 Mgmt Area: Kalkaska Sandy Moraines  
 YOE: 2026  
 Acres: 2428.6 GIS Calculated  
 Examiner: Thomas Peterson III  
 Map Revised: 10/14/2024  
 Map Phase: Post Review

- Berms
- Bridges
- Culvert
- Survey Grade Corners
- Remonumented Section Corners
- Motorcycle Trails (SOS License)
- Motorcycle Trails (DNR License)
- MCCCT Trails

- ORV Routes
- Snowmobile Trails
- Designated ORV Routes
- Designated MCCCT Trails
- DNR - Secondary Forest Road
- DNR - Forest Access Route
- Federal / State Highway
- Federal / State - Dirt / Gravel Road
- County - Gravel Road
- County - Dirt Road (Seasonal)

- Private - Dirt / Gravel Road
- Active Railroads
- Intermittent Stream
- Lake/Pond
- Perennial River
- Powerline
- Lakes and Rivers
- Cold Water Streams
- Compartment Boundary
- SCA
- Available w/ Constraints

- Unavailable
- 5C: Delay treatment for age/size class diversity or exceptional site quality
- 2G: Too wet (sensitive soils, does not include access issues)
- 2H: Blocked by physical obstacle (e.g. upland stand in a lowland area)
- 3J: Water quality / BMPs (stream, river, or lake)
- 5E: Long-Term Retention
- Stand Boundaries
- Natural Rivers Vegetative Buffer
- Natural Rivers Zoning District
- High Priority Trout Stream Buffer
- Other Habitat Area



# Report 1 – Total Acres by Cover Type and Age Class

Traverse City Mgt. Unit

Compartment 155 Year of Entry 2026

Thomas Peterson III: Examiner



## Age Class

	Non-Forest	0-9	10-19	20-29	30-39	40-49	50-59	60-69	70-79	80-89	90-99	100-109	110-119	120-129	130-139	140-149	150+	Unseen-Aged	Total
Aspen	0	49	111	87	37	60	145	0	0	0	0	0	0	0	0	0	0	0	489
Herbaceous Openland	112	0	0	0	0	0	0	0	0	0	0	0	0	0	0	0	0	0	112
Jack Pine	0	0	90	23	0	42	30	0	0	0	0	0	0	0	0	0	0	0	184
Low-Density Trees	32	0	0	0	0	0	0	0	0	0	0	0	0	0	0	0	0	0	32
Lowland Aspen/Balsam Poplar	0	0	0	0	0	0	0	37	0	0	0	0	0	0	0	0	0	0	37
Lowland Conifers	0	0	0	0	0	0	0	0	0	0	63	9	0	0	0	0	0	0	72
Lowland Deciduous	0	0	0	0	0	0	0	0	0	31	0	0	0	0	0	0	0	0	31
Lowland Mixed Forest	0	0	0	0	0	0	0	0	0	0	190	0	0	0	0	0	0	0	190
Lowland Shrub	263	0	0	0	0	0	0	0	0	0	0	0	0	0	0	0	0	0	263
Mixed Upland Deciduous	0	33	0	0	0	0	6	0	7	0	4	0	0	0	0	0	0	0	50
Natural Mixed Pines	0	0	0	0	0	0	26	7	12	279	10	0	0	0	0	0	0	207	541
Red Pine	0	0	0	0	99	0	0	51	37	0	0	0	0	0	0	0	0	0	187
Upland Mixed Forest	0	0	0	0	41	0	0	0	48	0	0	0	0	0	0	0	0	0	89
Urban	4	0	0	0	0	0	0	0	0	0	0	0	0	0	0	0	0	0	4
Water	4	0	0	0	0	0	0	0	0	0	0	0	0	0	0	0	0	0	4
White Pine	0	0	3	0	0	0	27	14	9	86	9	0	0	0	0	0	0	0	148
<b>Total</b>	<b>415</b>	<b>82</b>	<b>204</b>	<b>110</b>	<b>177</b>	<b>102</b>	<b>234</b>	<b>109</b>	<b>113</b>	<b>396</b>	<b>276</b>	<b>9</b>	<b>0</b>	<b>0</b>	<b>0</b>	<b>0</b>	<b>0</b>	<b>207</b>	<b>2433</b>



## Report 2 – Treatment Summary

Traverse City Mgt. Unit  
Year of Entry: 2026

Acres of Harvest

Compartment 155  
Total Compartment Acres: 2,429

Commercial Harvest - 312  
Harvests with Site Condition - 0  
Next Step Harvest - 0  
Habitat Cut - 0

### Cover Type by Harvest Method

	Clearcut	Selection	Patch Clearcut	Seed Tree	Shelterwood	Thinning	Overstory Removal	Salvage	Other	Total Acres
Aspen	45	0	0	0	0	0	0	0	0	45
Jack Pine	71	0	0	0	0	0	0	0	0	71
Natural Mixed Pines	0	103	0	7	0	0	0	0	0	110
Red Pine	0	0	0	0	0	37	0	0	0	37
Upland Mixed Forest	0	0	0	49	0	0	0	0	0	49
<b>Total</b>	<b>116</b>	<b>103</b>	<b>0</b>	<b>56</b>	<b>0</b>	<b>37</b>	<b>0</b>	<b>0</b>	<b>0</b>	<b>312</b>

### Proposed and Next Step Treatments by Method

	Harvest	Site Prep	Planting	Seeding	Burning	Pesticide	Monitoring	Other	Non-Forest Mgt.	Total Acres
Current	312	0	0	0	6	0	70	0	27	414
Next Step	0	71	0	0	21	0	275	0	6	373
<b>Total</b>	<b>312</b>	<b>71</b>	<b>0</b>	<b>0</b>	<b>27</b>	<b>0</b>	<b>344</b>	<b>0</b>	<b>33</b>	<b>787</b>



S  
t  
a  
n  
d

Treatment Name	Acres	Stand CoverType	Size Density	Stand Age	BA Range	Treatment Type	Treatment Method	Cover Type Objective	Age Structure	Habitat Cut
----------------	-------	-----------------	--------------	-----------	----------	----------------	------------------	----------------------	---------------	-------------

**Approved Treatments:**

<p><b>2 61155002.25_NF</b> 5.0 310 - Herbaceous Openland Nonstocked NonForestMgt Herbaceous/Crop/ Grass Planting 2113 - Forage Crops No</p> <p><u>Prescription</u> Work around any beneficial vegetation (raspberry patch, mast bear shrub) to create a wildlife food plot of appropriate herbaceous species suited to site and soil conditions. Maintain as needed with mowing, native shrub planting, reseeding grasses/forbs or Forest Certification approved forage, fertilizing, burning, or removal of woody encroachment. May want to plant some mast producing trees/shrubs and create brush piles for cover.</p> <p><u>Specs:</u></p> <p><u>Next Step</u></p> <p><u>Treatments:</u></p> <p><u>Acceptable Regen:</u></p> <p><u>Other Comment:</u> Traditional wildlife food plot</p> <p><u>Site Condition:</u></p> <p><u>Proposed Start Date:</u> 10/1 /2026</p>
<p><b>3 61155003-NF</b> 1.1 310 - Herbaceous Openland Nonstocked NonForestMgt Herbaceous/Crop/ Grass Planting 3105 - Mixed Upland Herbaceous No</p> <p><u>Prescription</u> Burn on a rotational basis. The goal of prescribed burning is to restore and/or maintain a grassland/barrens ecosystem. The timing and frequency of the burns will be based on current needs of restoration such as reducing woody encroachment or promoting grasses versus forbs. Remove exotics as needed by herbiciding or other methods. Maintain as needed with mowing, seeding of native grasses and forbs, planting native mast bearing shrubs or trees, burning, or removal of woody encroachment.</p> <p><u>Specs:</u></p> <p><u>Next Step</u></p> <p><u>Treatments:</u></p> <p><u>Acceptable Regen:</u></p> <p><u>Other Comment:</u> Treat in conjunction with 61155002.</p> <p><u>Site Condition:</u></p> <p><u>Proposed Start Date:</u> 10/1 /2025</p>
<p><b>6 61155006-Cut</b> 36.7 4130 - Aspen Poletimber Well 49 81-110 Harvest Clearcut with Retention 413 - Aspen Even-Aged No</p> <p><u>Prescription</u> Final harvest stand by clearcutting stand. Cut all trees 2 inches or more at DBH. Leave standard area retention along wet swamp edge.</p> <p><u>Specs:</u> Leave a handful of white oaks in stand for seed source and protect white pine seedlings during harvest.</p> <p><u>Next Step</u> Monitoring, Natural Regen (Re-Inventory)</p> <p><u>Treatments:</u></p> <p><u>Acceptable Regen:</u> Fully stocked aspen stand with any mix of white pine, red maple</p> <p><u>Other Comment:</u></p> <p><u>Site Condition:</u></p> <p><u>Proposed Start Date:</u> 10/1 /2025</p>





S  
t  
a  
n  
d

Treatment Name	Acres	Stand CoverType	Size Density	Stand Age	BA Range	Treatment Type	Treatment Method	Cover Type Objective	Age Structure	Habitat Cut
----------------	-------	-----------------	--------------	-----------	----------	----------------	------------------	----------------------	---------------	-------------

<b>8</b>	<b>61155008-Burn</b>	6.3	330 - Low-Density Trees	Nonstocked			Burn	Opening	31022 - Warm Season Grass	No
----------	----------------------	-----	-------------------------	------------	--	--	------	---------	---------------------------	----

Prescription Specs: Burn on a rotational basis. The goal of prescribed burning is to restore and/or maintain a grassland/barrens ecosystem. The timing and frequency of the burns will be based on current needs of restoration such as reducing woody encroachment or promoting grasses versus forbs. Remove exotics as needed by herbiciding or other methods. Maintain as needed with mowing, seeding of native grasses and forbs, planting native mast bearing shrubs or trees, burning, or removal of woody encroachment.

Next Step Treatments: NonForestMgt, Mowing

Acceptable Regen:

Other Comment: Brush hog (or hand fell) around select leave trees and/or patches to maintain a barrens type community. Leave scattered mast producing trees and shrubs and/or conifers for wildlife food and cover. Could plant site appropriate native shrubs and/or mast producing trees for wildlife food and cover. Fertilize plantings and protect with wire cages or tubex. Considering establishing native herbaceous/forbs ground cover for wildlife food source.

Site Condition:

Proposed Start Date: 10/1 /2025

<b>13</b>	<b>61155013-Monitor</b>	69.5	310 - Herbaceous Openland	Nonstocked	0		Monitoring	Artificial Regen(3yr)	4211 - Planted Red Pine	Even-Aged	No
-----------	-------------------------	------	---------------------------	------------	---	--	------------	-----------------------	-------------------------	-----------	----

Prescription Specs:

Next Step Treatments:

Acceptable Regen: Fully Stocked Stand of Red Pine

Other Comment: Percent to Treat = 100%

Site Condition:

Proposed Start Date: 10/1 /2025

<b>28</b>	<b>61155028-NF</b>	20.5	330 - Low-Density Trees	Nonstocked		Unspecified	NonForestMgt	Brush Cutting	31022 - Warm Season Grass		No
-----------	--------------------	------	-------------------------	------------	--	-------------	--------------	---------------	---------------------------	--	----

Prescription Specs: Brush hog (or hand fell) around select leave trees and/or patches to maintain a barrens type community. Leave scattered mast producing trees and shrubs and/or conifers for wildlife food and cover. Could plant site appropriate native shrubs and/or mast producing trees for wildlife food and cover. Fertilize plantings and protect with wire cages or tubex. Considering establishing native herbaceous/forbs ground cover for wildlife food source.

Next Step Treatments: Burn, Opening

Acceptable Regen:

Other Comment: Treat in conjunction with 61046125 and 61055008 for barrens management.

Site Condition:

Proposed Start Date: 10/1 /2025



S  
t  
a  
n  
d

Treatment Name	Acres	Stand CoverType	Size Density	Stand Age	BA Range	Treatment Type	Treatment Method	Cover Type Objective	Age Structure	Habitat Cut
<b>30 61155030-Cut</b>	8.4	4130 - Aspen	Poletimber Well	49	81-110	Harvest	Clearcut	413 - Aspen	Even-Aged	No
<p><u>Prescription Specs:</u> Clear cut stand with no retention due to size of stand being under 10 acres. Cut all trees down to 2 inches in DBH. Follow BMP guidelines for stand 40. Protect all legacy trees and green tree mark a handful of white oak within stand boundary.</p> <p><u>Next Step Treatments:</u> Monitoring, Natural Regen (Re-Inventory)</p> <p><u>Acceptable Regen:</u> Fully stocked stand of aspen, with any red maple for pine component</p> <p><u>Other Comment:</u></p> <p><u>Site Condition:</u></p> <p><u>Proposed Start Date:</u> 10/1 /2025</p>										
<b>31 61155031-Cut</b>	7.0	42260 - Natural Pine, Mixed Deciduous	Poletimber Medium	64	1-50	Harvest	Seed Tree	4133 - Aspen, Mixed Pine	Even-Aged	No
<p><u>Prescription Specs:</u> Seed tree cut with no retention due to small size of stand. Mark to leave 10 -20 Basal area of some scattered pine / oak in stand to retain as seed source. Cut all other trees down to 2 inches in DBH. Cut all trees around aspen clones to expand aspen clones as much as possible.</p> <p><u>Next Step Treatments:</u> Monitoring, Natural Regen (Re-Inventory)</p> <p><u>Acceptable Regen:</u> Fully Stocked stand of aspen, with mixed pine component.</p> <p><u>Other Comment:</u></p> <p><u>Site Condition:</u></p> <p><u>Proposed Start Date:</u> 10/1 /2025</p>										
<b>35 61155035-Cut</b>	41.6	42221 - Natural Jack Pine, Mixed Deciduous	Poletimber Medium	49	1-50	Harvest	Clearcut with Retention	4222 - Natural Jack Pine	Even-Aged	No
<p><u>Prescription Specs:</u> Clearcut Stand with standard area retention. Cut all trees down to 2 inches in DBH during harvest. Leave retention around stand 13 to avoid any green up issues.</p> <p><u>Next Step Treatments:</u> SitePrep, Scarification; Monitoring, Natural Regen (Re-Inventory)</p> <p><u>Acceptable Regen:</u> Fully to Moderately stocked stand of Jack Pine, with any mixture of aspen, white pine, red pine, red maple or cherry.</p> <p><u>Other Comment:</u></p> <p><u>Site Condition:</u></p> <p><u>Proposed Start Date:</u> 10/1 /2025</p>										
<b>45 61155045-Cut</b>	29.7	42220 - Natural Jack Pine	Poletimber Well	54	51-80	Harvest	Clearcut with Retention	4222 - Natural Jack Pine	Even-Aged	No
<p><u>Prescription Specs:</u> Final harvest stand and leave standard area retention in stand during harvest. Cut all trees down to 2 inches or less in DBH. Use trail protection spec for snowmobile trail.</p> <p><u>Next Step Treatments:</u> SitePrep, Scarification; Monitoring, Natural Regen (Re-Inventory)</p> <p><u>Acceptable Regen:</u> Fully to Moderately stocked stand of jack pine, with any white pine, red pine, aspen, red maple or black cherry mixture.</p> <p><u>Other Comment:</u></p> <p><u>Site Condition:</u></p> <p><u>Proposed Start Date:</u> 10/1 /2025</p>										



S  
t  
a  
n  
d

Treatment Name	Acres	Stand CoverType	Size Density	Stand Age	BA Range	Treatment Type	Treatment Method	Cover Type Objective	Age Structure	Habitat Cut
<b>57 61155057-Cut</b>	102.9	42290 - Natural Mixed Pine	Sawtimber Well	75	111-140	Harvest	Single Tree Selection	42260 - Natural Pine, Mixed Deciduous	Two-Aged	No
<p><u>Prescription</u> Mark stand down to a basal are of 80-100. Opening up around oaks and thinning pine component in stand.</p> <p><u>Specs:</u></p> <ul style="list-style-type: none"> <li>- In addition to marking create 15-20 gaps across stand totaling around 20 acres or around 20% of treatment acres. Gap size should be around 1 acre and pine and / or oak regeneration should be present and protected in each gap during harvest.</li> <li>- Cut all trees around aspen clones and Jack Pine Pockets to allow aspen and Jack Pine to advance to next level. Areas with Aspen and Jack Pine it is acceptable to have a basal area of 0 and should not be considered in overall stands average basal area.</li> <li>- Protect as much of understory as possible in stand during harvest.</li> <li>- With oak being in overstory and understory use oak wilt spec no exception to protect oak within stand from oak wilt.</li> </ul> <p><u>Next Step</u> Monitoring, Natural Regen (Re-Inventory)</p> <p><u>Treatments:</u></p> <p><u>Acceptable</u> Fully Stocked Understory of mixed white pine, red pine, red oak, white oak, aspen, and red maple.</p> <p><u>Regen:</u></p> <p><u>Other</u></p> <p><u>Comment:</u></p> <p><u>Site Condition:</u></p> <p><u>Proposed Start Date:</u> 10/1 /2025</p>										
<b>60 61155060-Cut</b>	37.1	42110 - Planted Red Pine	Sawtimber Well	75	171-200	Harvest	Crown Thinning	4211 - Planted Red Pine	Even-Aged	No
<p><u>Prescription</u> Thin stand down to 120. Follow red pine marking guidelines. Residual basal can be lower around oak trees if oak is in good condition</p> <p><u>Specs:</u> release all 4 sides of oak, to try to promote more acorn production for stand. Use oak wilt spec for timber sale.</p> <p><u>Next Step</u></p> <p><u>Treatments:</u></p> <p><u>Acceptable</u></p> <p><u>Regen:</u></p> <p><u>Other</u> IF any dieback pockets are found talk to forest health specialist and follow there recommended guidelines to cut pocket out.</p> <p><u>Comment:</u></p> <p><u>Site Condition:</u></p> <p><u>Proposed Start Date:</u> 10/1 /2025</p>										
<b>84 61155084-Cut</b>	48.6	4311 - Pine, Aspen Mix	Sawtimber Well	72	111-140	Harvest	Seed Tree with Retention	4319 - Mixed Upland Forest	Even-Aged	No
<p><u>Prescription</u> Seed tree cut with standard area retention. Leave retention in area were pine and oak are dominant species. Mark 10 to 20 basal area</p> <p><u>Specs:</u> across stand concentrating on leaving oak and pine for seed source. Avoiding leaving any seed trees within established aspen clones to promote aspen regeneration. Within aspen clones a basal area of 0 is acceptable.</p> <p><u>Next Step</u> Monitoring, Natural Regen (Re-Inventory)</p> <p><u>Treatments:</u></p> <p><u>Acceptable</u> Fully Stocked stand with any mixture of red maple, aspen, red oak, white oak, white pine and / or red pine.</p> <p><u>Regen:</u></p> <p><u>Other</u></p> <p><u>Comment:</u></p> <p><u>Site Condition:</u></p> <p><u>Proposed Start Date:</u> 10/1 /2025</p>										

**Total Treatment 414.4**  
**Acreage Proposed:**

## Report 4 – Site Conditions

Compartment: 155  
Year of Entry: 2026

Traverse City Mgt. Unit  
Thomas Peterson III: Examiner

### Availability for Management

Total Acres	Acres Available	Acres Avail		Dominant Site Conditions	Dominant Site Conditions				
		With Condition	Not Available		5C	2G	2H	3J	5E
489	347	<b>133</b>	9	Aspen	<b>133</b>	2	4	2	2
113	108	<b>0</b>	5	Herbaceous Openland		0			5
183	183	<b>0</b>	0	Jack Pine		0			
32	30	<b>0</b>	2	Low-Density Trees				2	
37	0	<b>0</b>	37	Lowland Aspen/Balsam Poplar				37	
72	0	<b>9</b>	62	Lowland Conifers	<b>9</b>	62			
30	2	<b>0</b>	28	Lowland Deciduous		28			
190	5	<b>0</b>	185	Lowland Mixed Forest		170	0	14	
263	222	<b>0</b>	42	Lowland Shrub		6		35	
50	48	<b>0</b>	3	Mixed Upland Deciduous		0		1	2
540	388	<b>141</b>	10	Natural Mixed Pines	<b>141</b>	0		10	
186	186	<b>0</b>	0	Red Pine				0	
89	89	<b>0</b>	0	Upland Mixed Forest					
4	4	<b>0</b>	0	Urban		0			
4	4	<b>0</b>	0	Water					
148	94	<b>54</b>	0	White Pine	<b>54</b>	0		0	0
2,429	1,710	<b>337</b>	382	Total Forested Acres	<b>337</b>	269	4	102	8
	70%	<b>14%</b>	16%	Relative Percent					

*\*Due to limitations in the current Site Conditions Analysis tool, all nonforested acres are considered available. Future development will enable analysis of nonforested types.*

Site No.	Dominant Site Cond Availability	Dominant Site Condition	Acres	Other Site Condition	Other Site Condition	Other Site Condition	Other Site Condition
1	Available	<b>5C: Delay treatment for age/size class diversity or exceptional site quality</b>	45	Unspecified	Unspecified	Unspecified	Unspecified
<b>Comments:</b>							

## Report 4 – Site Conditions

**Compartment: 155**  
**Year of Entry: 2026**

**Traverse City Mgt. Unit**  
**Thomas Peterson III: Examiner**

3	<b>Unavailable</b>	<b>2G: Too wet (sensitive soils, does not include access issues)</b>	63	Unspecified	Unspecified	Unspecified	Unspecified
<b>Comments:</b>							
4	<b>Unavailable</b>	<b>2H: Blocked by physical obstacle (e.g. upland stand in a lowland area)</b>	4	Unspecified	Unspecified	Unspecified	Unspecified
<b>Comments:</b>							
5	<b>Unavailable</b>	<b>2G: Too wet (sensitive soils, does not include access issues)</b>	105	5D: Unproductive Forest Land	Unspecified	Unspecified	Unspecified
<b>Comments:</b>							
6	<b>Available</b>	<b>5C: Delay treatment for age/size class diversity or exceptional site quality</b>	53	Unspecified	Unspecified	Unspecified	Unspecified
<b>Comments:</b>							
7	<b>Unavailable</b>	<b>3J: Water quality / BMPs (stream, river, or lake)</b>	38	2G: Too wet (sensitive soils, does not include access issues)	Unspecified	Unspecified	Unspecified
<b>Comments:</b>							
8	<b>Unavailable</b>	<b>3J: Water quality / BMPs (stream, river, or lake)</b>	64	3D: Recreational / Scenic values	Unspecified	Unspecified	Unspecified
<b>Comments:</b> Natural Rivers buffer.							

## Report 4 – Site Conditions

**Compartment: 155**

**Year of Entry: 2026**

**Traverse City Mgt. Unit**

**Thomas Peterson III: Examiner**

9	<b>Unavailable</b>	<b>2G: Too wet (sensitive soils, does not include access issues)</b>	5	Unspecified	Unspecified	Unspecified	Unspecified
<b>Comments:</b> Excluded from sale because it was too wet to cut.							
10	<b>Unavailable</b>	<b>2G: Too wet (sensitive soils, does not include access issues)</b>	72	4A: No Markets Available for these Forest Products	Unspecified	Unspecified	Unspecified
<b>Comments:</b>							
11	<b>Available</b>	<b>5C: Delay treatment for age/size class diversity or exceptional site quality</b>	73	Unspecified	Unspecified	Unspecified	Unspecified
<b>Comments:</b>							
12	<b>Available</b>	<b>5C: Delay treatment for age/size class diversity or exceptional site quality</b>	103	Unspecified	Unspecified	Unspecified	Unspecified
<b>Comments:</b>							
13	<b>Unavailable</b>	<b>5E: Long-Term Retention</b>	1	Unspecified	Unspecified	Unspecified	Unspecified
<b>Comments:</b>							
14	<b>Unavailable</b>	<b>5E: Long-Term Retention</b>	3	Unspecified	Unspecified	Unspecified	Unspecified
<b>Comments:</b>							

## Report 4 – Site Conditions

**Compartment: 155**  
**Year of Entry: 2026**

**Traverse City Mgt. Unit**  
**Thomas Peterson III: Examiner**

15	<b>Unavailable</b>	<b>2G: Too wet (sensitive soils, does not include access issues)</b>	23	Unspecified	Unspecified	Unspecified	Unspecified
<b>Comments:</b>							
16	<b>Unavailable</b>	<b>5E: Long-Term Retention</b>	2	Unspecified	Unspecified	Unspecified	Unspecified
<b>Comments:</b>							
17	<b>Unavailable</b>	<b>5E: Long-Term Retention</b>	2	Unspecified	Unspecified	Unspecified	Unspecified
<b>Comments:</b>							
18	<b>Available</b>	<b>5C: Delay treatment for age/size class diversity or exceptional site quality</b>	19	Unspecified	Unspecified	Unspecified	Unspecified
<b>Comments:</b>							
19	<b>Available</b>	<b>5C: Delay treatment for age/size class diversity or exceptional site quality</b>	9	Unspecified	Unspecified	Unspecified	Unspecified
<b>Comments:</b>							
20	<b>Available</b>	<b>5C: Delay treatment for age/size class diversity or exceptional site quality</b>	8	Unspecified	Unspecified	Unspecified	Unspecified
<b>Comments:</b>							

**Report 4 – Site Conditions**

**Compartment: 155**

**Year of Entry: 2026**

**Traverse City Mgt. Unit**

**Thomas Peterson III: Examiner**

21	<b>Available</b>	<b>5C: Delay treatment for age/size class diversity or exceptional site quality</b>	9	Unspecified	Unspecified	Unspecified	Unspecified
<b>Comments:</b>							
22	<b>Available</b>	<b>5C: Delay treatment for age/size class diversity or exceptional site quality</b>	10	Unspecified	Unspecified	Unspecified	Unspecified
<b>Comments:</b>							
23	<b>Available</b>	<b>5C: Delay treatment for age/size class diversity or exceptional site quality</b>	9	Unspecified	Unspecified	Unspecified	Unspecified
<b>Comments:</b>							



Mgt. Unit

Compartment: #Type!

Year of Entry:



### Report 5 – PROPOSED SPECIAL CONSERVATION AREA\* (SCA) DETAILS

\* This is a partial list of SCAs for this compartment. Not included are those areas identified under other Department initiatives (Natural Rivers, Deer Wintering Areas, etc.). Those will be identified in separate, future map and report products.

SCA Name	SCA Category	Detail Type	Recommendation	Acres
----------	--------------	-------------	----------------	-------

Comments



**Report 6 – EXISTING SPECIAL CONSERVATION AREA DETAILS**

\* This is a list of SCA's for this compartment along with a 1/4 mile buffer surrounding the compartment. Refer to the Special Conservation Area Map for locations of the below listed Conservation Areas.

ERA = Ecological Reference Area  
HCVA = High Conservation Value Area  
SCA = Special Conservation Area

Conservation Area	Type	Description
SCA	Cold Water Stream	A coldwater stream has temperature and dissolved oxygen conditions that allow naturally-reproduced or stocked trout populations and those of other coldwater fish species (e.g., slimy sculpin) to persist from year to year. Coldwater streams in Michigan typically provide these conditions due to substantial contributions of groundwater to their stream flows. Such streams are established by Director's action and designated as trout resources by Fisheries Order 210.
SCA	Riparian Area	A transitional area between aquatic and terrestrial ecosystems in which the terrestrial ecosystem influences the aquatic ecosystem and vice-versa. Because of the unique conditions adjacent to lakes, streams and open water wetlands, riparian areas harbor a high diversity of plants and wildlife. Riparian communities are ecologically and socially significant in their effects on water quality and quantity, as well as aesthetics, habitat, bank stability, timber production, and their contribution to overall biodiversity.
HCVA	Natural Rivers	There are two Natural Rivers datasets which are derived from spatial buffers set from an established and approved distance from the river centerlines. The Natural Rivers Zoning District is a 400 foot buffer for most Natural Rivers. The Vegetative Buffer ranges from 25 to 100 feet.



Stand	Level 4 Cover Type	Size Density	Acres	Stand Age	BA Range	Managed Site	General Comments																																									
1	6129 - Mixed Coniferous Lowland Forest	Poletimber Well	9.0	105	111-140	N/A	2024 - Transition ground between wetland / river corridor and aspen stand. Larger white pine scattered throughout stand with pole size red maple and black spruce mostly under pine																																									
<table border="1"> <thead> <tr> <th>Canopy Species</th> <th>% Cover</th> <th>Size Class</th> <th>DBH</th> <th>Age</th> </tr> </thead> <tbody> <tr> <td>Red Maple</td> <td>10</td> <td>Pole</td> <td>8</td> <td></td> </tr> <tr> <td>Quaking Aspen</td> <td>5</td> <td>Pole</td> <td>6</td> <td></td> </tr> <tr> <td>Black Spruce</td> <td>40</td> <td>Pole</td> <td>8</td> <td>105</td> </tr> <tr> <td>White Pine</td> <td>15</td> <td>Log</td> <td>16</td> <td></td> </tr> <tr> <td>Red Pine</td> <td>30</td> <td>Log</td> <td>12</td> <td></td> </tr> </tbody> </table>		Canopy Species	% Cover	Size Class	DBH	Age	Red Maple	10	Pole	8		Quaking Aspen	5	Pole	6		Black Spruce	40	Pole	8	105	White Pine	15	Log	16		Red Pine	30	Log	12		<table border="1"> <thead> <tr> <th>Sub-Canopy Species</th> <th>Density</th> <th>Avg. Height</th> <th>Size</th> </tr> </thead> <tbody> <tr> <td>Red Maple</td> <td>Low</td> <td>Variable</td> <td>Sapling</td> </tr> <tr> <td>Black Spruce</td> <td>Low</td> <td>Variable</td> <td>Sapling</td> </tr> </tbody> </table>		Sub-Canopy Species	Density	Avg. Height	Size	Red Maple	Low	Variable	Sapling	Black Spruce	Low	Variable	Sapling			
Canopy Species	% Cover	Size Class	DBH	Age																																												
Red Maple	10	Pole	8																																													
Quaking Aspen	5	Pole	6																																													
Black Spruce	40	Pole	8	105																																												
White Pine	15	Log	16																																													
Red Pine	30	Log	12																																													
Sub-Canopy Species	Density	Avg. Height	Size																																													
Red Maple	Low	Variable	Sapling																																													
Black Spruce	Low	Variable	Sapling																																													
2	310 - Herbaceous Openland	Nonstocked	5.0			Managed Opening	2024 - Stand continues into compartment to the north. Stand is managed by wildlife as food plot.																																									
3	310 - Herbaceous Openland	Nonstocked	1.1				2024 - Old well pad, no oil or gas equipment on site at this time. Records show well was plugged in 1977.																																									
4	4199 - Other Mixed Upland Deciduous	Poletimber Well	5.8	51	51-80	N/A	2024 - Stand has heavy red maple component at this time. Stand has a lot of white oak in understory. 2013 - Clumpy red maple with scattered oak. Young red maple, barely pole-sized. Oak in understory is about 2-3' tall. More oak to the north.																																									
<table border="1"> <thead> <tr> <th>Canopy Species</th> <th>% Cover</th> <th>Size Class</th> <th>DBH</th> <th>Age</th> </tr> </thead> <tbody> <tr> <td>White Pine</td> <td>10</td> <td>Log/Pole</td> <td>12</td> <td></td> </tr> <tr> <td>White Oak</td> <td>15</td> <td>Log/Pole</td> <td>12</td> <td></td> </tr> <tr> <td>Red Pine</td> <td>2</td> <td>Log</td> <td>12</td> <td></td> </tr> <tr> <td>Red Oak</td> <td>15</td> <td>Log/Pole</td> <td>12</td> <td></td> </tr> <tr> <td>Red Maple</td> <td>58</td> <td>Pole/Sapling</td> <td>5</td> <td>51</td> </tr> </tbody> </table>		Canopy Species	% Cover	Size Class	DBH	Age	White Pine	10	Log/Pole	12		White Oak	15	Log/Pole	12		Red Pine	2	Log	12		Red Oak	15	Log/Pole	12		Red Maple	58	Pole/Sapling	5	51	<table border="1"> <thead> <tr> <th>Sub-Canopy Species</th> <th>Density</th> <th>Avg. Height</th> <th>Size</th> </tr> </thead> <tbody> <tr> <td>Red Oak</td> <td>Low</td> <td>&lt; 5 feet</td> <td>Sapling</td> </tr> <tr> <td>White Oak</td> <td>Medium</td> <td>Variable</td> <td>Sapling</td> </tr> </tbody> </table>		Sub-Canopy Species	Density	Avg. Height	Size	Red Oak	Low	< 5 feet	Sapling	White Oak	Medium	Variable	Sapling			
Canopy Species	% Cover	Size Class	DBH	Age																																												
White Pine	10	Log/Pole	12																																													
White Oak	15	Log/Pole	12																																													
Red Pine	2	Log	12																																													
Red Oak	15	Log/Pole	12																																													
Red Maple	58	Pole/Sapling	5	51																																												
Sub-Canopy Species	Density	Avg. Height	Size																																													
Red Oak	Low	< 5 feet	Sapling																																													
White Oak	Medium	Variable	Sapling																																													
5	4311 - Pine, Aspen Mix	Poletimber Medium	40.7	39	1-50	N/A	2024 - Pockets of white pine and jack pine are scattered throughout the stand. Stocking is variable throughout stand. Hold for another 10 years and consider clearcutting stand to expand aspen clones.																																									
<table border="1"> <thead> <tr> <th>Canopy Species</th> <th>% Cover</th> <th>Size Class</th> <th>DBH</th> <th>Age</th> </tr> </thead> <tbody> <tr> <td>White Pine</td> <td>20</td> <td>Pole</td> <td>5</td> <td></td> </tr> <tr> <td>Red Pine</td> <td>5</td> <td>Pole</td> <td>5</td> <td></td> </tr> <tr> <td>Bigtooth Aspen</td> <td>55</td> <td>Pole/Sapling</td> <td>5</td> <td>39</td> </tr> <tr> <td>Jack Pine</td> <td>20</td> <td>Pole</td> <td>5</td> <td></td> </tr> </tbody> </table>		Canopy Species	% Cover	Size Class	DBH	Age	White Pine	20	Pole	5		Red Pine	5	Pole	5		Bigtooth Aspen	55	Pole/Sapling	5	39	Jack Pine	20	Pole	5		<table border="1"> <thead> <tr> <th>Sub-Canopy Species</th> <th>Density</th> <th>Avg. Height</th> <th>Size</th> </tr> </thead> <tbody> <tr> <td>Jack Pine</td> <td>Low</td> <td>Variable</td> <td>Sapling</td> </tr> <tr> <td>White Pine</td> <td>Low</td> <td>Variable</td> <td>Sapling</td> </tr> </tbody> </table>		Sub-Canopy Species	Density	Avg. Height	Size	Jack Pine	Low	Variable	Sapling	White Pine	Low	Variable	Sapling								
Canopy Species	% Cover	Size Class	DBH	Age																																												
White Pine	20	Pole	5																																													
Red Pine	5	Pole	5																																													
Bigtooth Aspen	55	Pole/Sapling	5	39																																												
Jack Pine	20	Pole	5																																													
Sub-Canopy Species	Density	Avg. Height	Size																																													
Jack Pine	Low	Variable	Sapling																																													
White Pine	Low	Variable	Sapling																																													
6	4130 - Aspen	Poletimber Well	36.7	49	81-110	N/A	2024. Stand is fully stocked aspen stand with some white pine in its understory.																																									
<table border="1"> <thead> <tr> <th>Canopy Species</th> <th>% Cover</th> <th>Size Class</th> <th>DBH</th> <th>Age</th> </tr> </thead> <tbody> <tr> <td>White Pine</td> <td>10</td> <td>Pole</td> <td>8</td> <td></td> </tr> <tr> <td>Bigtooth Aspen</td> <td>80</td> <td>Pole/Log</td> <td>8</td> <td>49</td> </tr> <tr> <td>White Oak</td> <td>10</td> <td>Pole/Log</td> <td>8</td> <td></td> </tr> </tbody> </table>		Canopy Species	% Cover	Size Class	DBH	Age	White Pine	10	Pole	8		Bigtooth Aspen	80	Pole/Log	8	49	White Oak	10	Pole/Log	8		<table border="1"> <thead> <tr> <th>Sub-Canopy Species</th> <th>Density</th> <th>Avg. Height</th> <th>Size</th> </tr> </thead> <tbody> <tr> <td>White Pine</td> <td>Low</td> <td>Variable</td> <td>Sapling</td> </tr> <tr> <td>White Oak</td> <td>Low</td> <td>Variable</td> <td>Sapling</td> </tr> </tbody> </table>		Sub-Canopy Species	Density	Avg. Height	Size	White Pine	Low	Variable	Sapling	White Oak	Low	Variable	Sapling													
Canopy Species	% Cover	Size Class	DBH	Age																																												
White Pine	10	Pole	8																																													
Bigtooth Aspen	80	Pole/Log	8	49																																												
White Oak	10	Pole/Log	8																																													
Sub-Canopy Species	Density	Avg. Height	Size																																													
White Pine	Low	Variable	Sapling																																													
White Oak	Low	Variable	Sapling																																													



Stand	Level 4 Cover Type	Size Density	Acres	Stand Age	BA Range	Managed Site	General Comments																																																								
7	6132 - Mixed Lowland Forest with Cedar	Poletimber Well	79.7	91	1-50	N/A	2023- South Branch of Boardman River Runs through stand. 2014 - Lots of red maple in understory and pockets of E3. Pockets of cedar. Second spot was red maple (E6). Some pockets have a heavier conifer component. Large white pine along the edge of South Branch. West finger has a small drain running through it. The west finger has more of an aspen component. There are small pockets of S6 scattered through the stand.																																																								
<table border="1"> <thead> <tr> <th>Canopy Species</th> <th>% Cover</th> <th>Size Class</th> <th>DBH</th> <th>Age</th> </tr> </thead> <tbody> <tr><td>White Pine</td><td>5</td><td>Log</td><td>12</td><td></td></tr> <tr><td>Black Ash</td><td>10</td><td>Pole</td><td>8</td><td></td></tr> <tr><td>Quaking Aspen</td><td>5</td><td>Pole</td><td>8</td><td></td></tr> <tr><td>Red Maple</td><td>30</td><td>Pole</td><td>8</td><td>91</td></tr> <tr><td>Black Spruce</td><td>10</td><td>Pole</td><td>8</td><td></td></tr> <tr><td>Northern White Cedar</td><td>30</td><td>Pole</td><td>8</td><td>91</td></tr> <tr><td>Paper Birch</td><td>10</td><td>Pole</td><td>8</td><td></td></tr> </tbody> </table>		Canopy Species	% Cover	Size Class	DBH	Age	White Pine	5	Log	12		Black Ash	10	Pole	8		Quaking Aspen	5	Pole	8		Red Maple	30	Pole	8	91	Black Spruce	10	Pole	8		Northern White Cedar	30	Pole	8	91	Paper Birch	10	Pole	8		<table border="1"> <thead> <tr> <th>Sub-Canopy Species</th> <th>Density</th> <th>Avg. Height</th> <th>Size</th> </tr> </thead> <tbody> <tr><td>Red Maple</td><td>High</td><td>10 - 20 feet</td><td>Sapling</td></tr> <tr><td>Paper Birch</td><td>Low</td><td>Variable</td><td>Sapling</td></tr> <tr><td>Tag Alder</td><td>High</td><td>5 - 10 feet</td><td>Tall Shrub</td></tr> <tr><td>Black Spruce</td><td>Low</td><td>Variable</td><td>Sapling</td></tr> </tbody> </table>		Sub-Canopy Species	Density	Avg. Height	Size	Red Maple	High	10 - 20 feet	Sapling	Paper Birch	Low	Variable	Sapling	Tag Alder	High	5 - 10 feet	Tall Shrub	Black Spruce	Low	Variable	Sapling
Canopy Species	% Cover	Size Class	DBH	Age																																																											
White Pine	5	Log	12																																																												
Black Ash	10	Pole	8																																																												
Quaking Aspen	5	Pole	8																																																												
Red Maple	30	Pole	8	91																																																											
Black Spruce	10	Pole	8																																																												
Northern White Cedar	30	Pole	8	91																																																											
Paper Birch	10	Pole	8																																																												
Sub-Canopy Species	Density	Avg. Height	Size																																																												
Red Maple	High	10 - 20 feet	Sapling																																																												
Paper Birch	Low	Variable	Sapling																																																												
Tag Alder	High	5 - 10 feet	Tall Shrub																																																												
Black Spruce	Low	Variable	Sapling																																																												
8	330 - Low-Density Trees	Nonstocked	10.1			Managed Opening	2024 - A few scattered black cherry, red maple and jack pine trees throughout stand, not a forested stand.																																																								
9	42200 - Natural White Pine	Sawtimber Well	14.2	65	81-110	N/A	2023 - Stands basal area is around 108 at this time. 2007 - Stand was thinned under contract South Branch Jack (61-079-06). All species were removed from sale area except for red pine, white pine and oak.																																																								
<table border="1"> <thead> <tr> <th>Canopy Species</th> <th>% Cover</th> <th>Size Class</th> <th>DBH</th> <th>Age</th> </tr> </thead> <tbody> <tr><td>White Pine</td><td>80</td><td>Log</td><td>12</td><td>65</td></tr> <tr><td>White Oak</td><td>5</td><td>Pole</td><td>8</td><td></td></tr> <tr><td>Red Pine</td><td>15</td><td>Log</td><td>12</td><td></td></tr> </tbody> </table>		Canopy Species	% Cover	Size Class	DBH	Age	White Pine	80	Log	12	65	White Oak	5	Pole	8		Red Pine	15	Log	12		<table border="1"> <thead> <tr> <th>Sub-Canopy Species</th> <th>Density</th> <th>Avg. Height</th> <th>Size</th> </tr> </thead> <tbody> <tr><td>White Pine</td><td>Low</td><td>Variable</td><td>Sapling</td></tr> <tr><td>Red Maple</td><td>Medium</td><td>Variable</td><td>Sapling</td></tr> </tbody> </table>		Sub-Canopy Species	Density	Avg. Height	Size	White Pine	Low	Variable	Sapling	Red Maple	Medium	Variable	Sapling																												
Canopy Species	% Cover	Size Class	DBH	Age																																																											
White Pine	80	Log	12	65																																																											
White Oak	5	Pole	8																																																												
Red Pine	15	Log	12																																																												
Sub-Canopy Species	Density	Avg. Height	Size																																																												
White Pine	Low	Variable	Sapling																																																												
Red Maple	Medium	Variable	Sapling																																																												
10	4199 - Other Mixed Upland Deciduous	Sapling Well	33.2	4	Immature	N/A	2024 - Stand is fully stocked sapling stand. 2019 - Stand was Final Harvested under Contract Red Pine Colored Glasses (61-127-01). White Oak Trees left scattered throughout sale. 1997 - Sale 61-052-96-01, completed 2/1997. Oak shelterwood, removed white pine, jack pine, red maple, quaking and bigtooth aspen. OI recommended future removal of overstory. Oak logs are decent, 3-4 logs. Stocking is variable, less dense in the south (O8).																																																								
<table border="1"> <thead> <tr> <th>Canopy Species</th> <th>% Cover</th> <th>Size Class</th> <th>DBH</th> <th>Age</th> </tr> </thead> <tbody> <tr><td>White Oak</td><td>10</td><td>Log</td><td>12</td><td></td></tr> <tr><td>Bigtooth Aspen</td><td>30</td><td>Sapling</td><td>1</td><td>4</td></tr> <tr><td>Red Maple</td><td>30</td><td>Sapling</td><td>1</td><td>4</td></tr> <tr><td>Red Oak</td><td>30</td><td>Sapling</td><td>1</td><td>4</td></tr> </tbody> </table>		Canopy Species	% Cover	Size Class	DBH	Age	White Oak	10	Log	12		Bigtooth Aspen	30	Sapling	1	4	Red Maple	30	Sapling	1	4	Red Oak	30	Sapling	1	4																																					
Canopy Species	% Cover	Size Class	DBH	Age																																																											
White Oak	10	Log	12																																																												
Bigtooth Aspen	30	Sapling	1	4																																																											
Red Maple	30	Sapling	1	4																																																											
Red Oak	30	Sapling	1	4																																																											
11	42121 - Planted Jack Pine, Mixed Deciduous	Sapling Well	19.1	13	Immature	N/A	2024 - Jack pine is good shape; some places black cherry has out competed the jack pine. 2007 - Sale was final harvested under contract South Branch Jack (61-079-06) Sale was clearcut except all oak was left in part south of road. FTP C62-757 jack pine planting was completed 5/2011.																																																								
<table border="1"> <thead> <tr> <th>Canopy Species</th> <th>% Cover</th> <th>Size Class</th> <th>DBH</th> <th>Age</th> </tr> </thead> <tbody> <tr><td>Jack Pine</td><td>70</td><td>Sapling</td><td>1</td><td>13</td></tr> <tr><td>Black Cherry</td><td>20</td><td>Sapling</td><td>1</td><td></td></tr> </tbody> </table>		Canopy Species	% Cover	Size Class	DBH	Age	Jack Pine	70	Sapling	1	13	Black Cherry	20	Sapling	1																																																
Canopy Species	% Cover	Size Class	DBH	Age																																																											
Jack Pine	70	Sapling	1	13																																																											
Black Cherry	20	Sapling	1																																																												
12	310 - Herbaceous Openland	Nonstocked	2.3		Immature		2024 - Well site, plugged in 1988. All oil and gas equipment has been removed off site.																																																								
13	310 - Herbaceous Openland	Nonstocked	74.1	0		4211 - Planted Red Pine	2023 -Year 1 Regeneration survey was completed 9/14/2023. There is currently 815 trees per acre and stand is 96% free to grow at this time.  2023 - Stand was planted to red pine, 862 TPA2022 - Stand was Skidder Site Prep Sprayed 6/22/20222021 - Stand was trenched to Plant Red Pine 2019 - Stand was Final Harvested under Contract Red Pine Colored Glasses (61-127-01)																																																								



Stand	Level 4 Cover Type	Size Density	Acres	Stand Age	BA Range	Managed Site	General Comments																																									
14	42200 - Natural White Pine	Sawtimber Well	23.3	82	81-110	N/A	2024 - Transition ground next to creek and drainage.																																									
<table border="1"> <thead> <tr> <th>Canopy Species</th> <th>% Cover</th> <th>Size Class</th> <th>DBH</th> <th>Age</th> </tr> </thead> <tbody> <tr> <td>White Pine</td> <td>65</td> <td>Log</td> <td>14</td> <td>82</td> </tr> <tr> <td>Quaking Aspen</td> <td>5</td> <td>Pole</td> <td>8</td> <td></td> </tr> <tr> <td>Red Pine</td> <td>20</td> <td>Log</td> <td>12</td> <td></td> </tr> <tr> <td>Jack Pine</td> <td>5</td> <td>Log/Pole</td> <td>8</td> <td></td> </tr> <tr> <td>Red Maple</td> <td>5</td> <td>Pole</td> <td>8</td> <td></td> </tr> </tbody> </table>		Canopy Species	% Cover	Size Class	DBH	Age	White Pine	65	Log	14	82	Quaking Aspen	5	Pole	8		Red Pine	20	Log	12		Jack Pine	5	Log/Pole	8		Red Maple	5	Pole	8		<table border="1"> <thead> <tr> <th>Sub-Canopy Species</th> <th>Density</th> <th>Avg. Height</th> <th>Size</th> </tr> </thead> <tbody> <tr> <td>Red Maple</td> <td>Low</td> <td>5 - 10 feet</td> <td>Sapling</td> </tr> <tr> <td>White Pine</td> <td>Low</td> <td>5 - 10 feet</td> <td>Sapling</td> </tr> </tbody> </table>		Sub-Canopy Species	Density	Avg. Height	Size	Red Maple	Low	5 - 10 feet	Sapling	White Pine	Low	5 - 10 feet	Sapling			
Canopy Species	% Cover	Size Class	DBH	Age																																												
White Pine	65	Log	14	82																																												
Quaking Aspen	5	Pole	8																																													
Red Pine	20	Log	12																																													
Jack Pine	5	Log/Pole	8																																													
Red Maple	5	Pole	8																																													
Sub-Canopy Species	Density	Avg. Height	Size																																													
Red Maple	Low	5 - 10 feet	Sapling																																													
White Pine	Low	5 - 10 feet	Sapling																																													
15	42220 - Natural Jack Pine	Sapling Well	6.5	27	Immature	N/A	2024 - Stand is fully stocked at this time, should be pole stand next year of entry. 2013 - Thick natural regeneration, 10-20' tall. Some quaking aspen and red maple mixed in.																																									
<table border="1"> <thead> <tr> <th>Canopy Species</th> <th>% Cover</th> <th>Size Class</th> <th>DBH</th> <th>Age</th> </tr> </thead> <tbody> <tr> <td>Bigtooth Aspen</td> <td>5</td> <td>Sapling</td> <td>2</td> <td></td> </tr> <tr> <td>White Pine</td> <td>5</td> <td>Sapling</td> <td>2</td> <td></td> </tr> <tr> <td>Black Cherry</td> <td>10</td> <td>Sapling</td> <td>2</td> <td></td> </tr> <tr> <td>Jack Pine</td> <td>80</td> <td>Sapling</td> <td>3</td> <td>27</td> </tr> </tbody> </table>		Canopy Species	% Cover	Size Class	DBH	Age	Bigtooth Aspen	5	Sapling	2		White Pine	5	Sapling	2		Black Cherry	10	Sapling	2		Jack Pine	80	Sapling	3	27																						
Canopy Species	% Cover	Size Class	DBH	Age																																												
Bigtooth Aspen	5	Sapling	2																																													
White Pine	5	Sapling	2																																													
Black Cherry	10	Sapling	2																																													
Jack Pine	80	Sapling	3	27																																												
17	310 - Herbaceous Openland	Nonstocked	4.8				2024 - Pipeline runs through stand. Pipeline right away is mowed. Snowmobile trail is located in the pipeline corridor.																																									
18	42221 - Natural Jack Pine, Mixed Deciduous	Sapling Medium	15.7	27	Immature	N/A	2023 - Stand still has several openings in. 2013 - Sale 61-052-96-01, completed 2/1997. Jack pine is about 10' tall. Stocking is variable. Red maple and cherry have filled in. Mostly cherry/U0 on west end.																																									
<table border="1"> <thead> <tr> <th>Canopy Species</th> <th>% Cover</th> <th>Size Class</th> <th>DBH</th> <th>Age</th> </tr> </thead> <tbody> <tr> <td>Red Maple</td> <td>15</td> <td>Sapling</td> <td>2</td> <td></td> </tr> <tr> <td>Red Oak</td> <td>5</td> <td>Sapling</td> <td>2</td> <td></td> </tr> <tr> <td>Jack Pine</td> <td>60</td> <td>Sapling/Pole</td> <td>4</td> <td>27</td> </tr> <tr> <td>Black Cherry</td> <td>20</td> <td>Sapling</td> <td>2</td> <td></td> </tr> </tbody> </table>		Canopy Species	% Cover	Size Class	DBH	Age	Red Maple	15	Sapling	2		Red Oak	5	Sapling	2		Jack Pine	60	Sapling/Pole	4	27	Black Cherry	20	Sapling	2																							
Canopy Species	% Cover	Size Class	DBH	Age																																												
Red Maple	15	Sapling	2																																													
Red Oak	5	Sapling	2																																													
Jack Pine	60	Sapling/Pole	4	27																																												
Black Cherry	20	Sapling	2																																													
19	42121 - Planted Jack Pine, Mixed Deciduous	Sapling Well	3.1	19	Immature	N/A	2024 - Portions of stand aspen is out competing Jack Pine. 2007 - Trenched and planted jack pine, 5/2007. (FTP C62-726, filed with Comp 156.) Trees are about 10' tall. Stand continues in Comp 156 to the north.																																									
<table border="1"> <thead> <tr> <th>Canopy Species</th> <th>% Cover</th> <th>Size Class</th> <th>DBH</th> <th>Age</th> </tr> </thead> <tbody> <tr> <td>Bigtooth Aspen</td> <td>20</td> <td>Sapling</td> <td>2</td> <td></td> </tr> <tr> <td>Jack Pine</td> <td>80</td> <td>Sapling</td> <td>2</td> <td>19</td> </tr> </tbody> </table>		Canopy Species	% Cover	Size Class	DBH	Age	Bigtooth Aspen	20	Sapling	2		Jack Pine	80	Sapling	2	19																																
Canopy Species	% Cover	Size Class	DBH	Age																																												
Bigtooth Aspen	20	Sapling	2																																													
Jack Pine	80	Sapling	2	19																																												
21	330 - Low-Density Trees	Nonstocked	1.0		Unspecified	Managed Opening	2024 - Old Well site, well site was plugged in 11/13/13. Stand is starting to fill in with jack pine.  Updated stand comment not "managed oil/gas". Jordan Development is not responsible for any additional surface restoration. R Merrick																																									



Stand	Level 4 Cover Type	Size Density	Acres	Stand Age	BA Range	Managed Site	General Comments																																									
22	42290 - Natural Mixed Pine	Sawtimber Well	10.0	99	81-110	N/A	2024 - Legacy white and red pine in stand. Stand has red maple and aspen under larger pine.																																									
<table border="1"> <thead> <tr> <th>Canopy Species</th> <th>% Cover</th> <th>Size Class</th> <th>DBH</th> <th>Age</th> </tr> </thead> <tbody> <tr> <td>Bigtooth Aspen</td> <td>5</td> <td>Pole</td> <td>8</td> <td></td> </tr> <tr> <td>Red Maple</td> <td>20</td> <td>Pole</td> <td>8</td> <td></td> </tr> <tr> <td>Black Spruce</td> <td>5</td> <td>Pole</td> <td>8</td> <td></td> </tr> <tr> <td>Red Pine</td> <td>20</td> <td>Log</td> <td>14</td> <td></td> </tr> <tr> <td>White Pine</td> <td>50</td> <td>Log</td> <td>16</td> <td>99</td> </tr> </tbody> </table>		Canopy Species	% Cover	Size Class	DBH	Age	Bigtooth Aspen	5	Pole	8		Red Maple	20	Pole	8		Black Spruce	5	Pole	8		Red Pine	20	Log	14		White Pine	50	Log	16	99	<table border="1"> <thead> <tr> <th>Sub-Canopy Species</th> <th>Density</th> <th>Avg. Height</th> <th>Size</th> </tr> </thead> <tbody> <tr> <td>White Pine</td> <td>Low</td> <td>Variable</td> <td>Sapling</td> </tr> <tr> <td>Black Spruce</td> <td>Low</td> <td>Variable</td> <td>Sapling</td> </tr> </tbody> </table>		Sub-Canopy Species	Density	Avg. Height	Size	White Pine	Low	Variable	Sapling	Black Spruce	Low	Variable	Sapling			
Canopy Species	% Cover	Size Class	DBH	Age																																												
Bigtooth Aspen	5	Pole	8																																													
Red Maple	20	Pole	8																																													
Black Spruce	5	Pole	8																																													
Red Pine	20	Log	14																																													
White Pine	50	Log	16	99																																												
Sub-Canopy Species	Density	Avg. Height	Size																																													
White Pine	Low	Variable	Sapling																																													
Black Spruce	Low	Variable	Sapling																																													
26	42210 - Natural Red Pine	Sawtimber Well	9.0	63	81-110	N/A	2024 - Red Pine range from sapling to Log in stand. Several different age classes throughout stand.																																									
<table border="1"> <thead> <tr> <th>Canopy Species</th> <th>% Cover</th> <th>Size Class</th> <th>DBH</th> <th>Age</th> </tr> </thead> <tbody> <tr> <td>Red Pine</td> <td>70</td> <td>Log/Pole</td> <td>10</td> <td>63</td> </tr> <tr> <td>Jack Pine</td> <td>10</td> <td>Pole</td> <td>6</td> <td></td> </tr> <tr> <td>Red Maple</td> <td>5</td> <td>Pole</td> <td>6</td> <td></td> </tr> <tr> <td>Bigtooth Aspen</td> <td>10</td> <td>Pole/Sapling</td> <td>6</td> <td></td> </tr> <tr> <td>White Oak</td> <td>5</td> <td>Log/Pole</td> <td>10</td> <td></td> </tr> </tbody> </table>		Canopy Species	% Cover	Size Class	DBH	Age	Red Pine	70	Log/Pole	10	63	Jack Pine	10	Pole	6		Red Maple	5	Pole	6		Bigtooth Aspen	10	Pole/Sapling	6		White Oak	5	Log/Pole	10		<table border="1"> <thead> <tr> <th>Sub-Canopy Species</th> <th>Density</th> <th>Avg. Height</th> <th>Size</th> </tr> </thead> <tbody> <tr> <td>White Pine</td> <td>Medium</td> <td>Variable</td> <td>Sapling</td> </tr> </tbody> </table>		Sub-Canopy Species	Density	Avg. Height	Size	White Pine	Medium	Variable	Sapling							
Canopy Species	% Cover	Size Class	DBH	Age																																												
Red Pine	70	Log/Pole	10	63																																												
Jack Pine	10	Pole	6																																													
Red Maple	5	Pole	6																																													
Bigtooth Aspen	10	Pole/Sapling	6																																													
White Oak	5	Log/Pole	10																																													
Sub-Canopy Species	Density	Avg. Height	Size																																													
White Pine	Medium	Variable	Sapling																																													
27	42110 - Planted Red Pine	Poletimber Well	54.4	34	1-50	N/A	2024 - Stand has converted to pole stand this year of entry. Trees are 1-2 sticks tall at this time. Not ready for first thinning yet. 2014 - Trees are about 15' tall with scattered jack pine volunteers. Stocking is less dense in the southeast part. 1990 - Stand was Planted under FTP C62-401.																																									
<table border="1"> <thead> <tr> <th>Canopy Species</th> <th>% Cover</th> <th>Size Class</th> <th>DBH</th> <th>Age</th> </tr> </thead> <tbody> <tr> <td>Red Pine</td> <td>90</td> <td>Pole/Sapling</td> <td>5</td> <td>34</td> </tr> <tr> <td>Jack Pine</td> <td>10</td> <td>Pole/Sapling</td> <td>5</td> <td></td> </tr> </tbody> </table>		Canopy Species	% Cover	Size Class	DBH	Age	Red Pine	90	Pole/Sapling	5	34	Jack Pine	10	Pole/Sapling	5																																	
Canopy Species	% Cover	Size Class	DBH	Age																																												
Red Pine	90	Pole/Sapling	5	34																																												
Jack Pine	10	Pole/Sapling	5																																													
28	330 - Low-Density Trees	Nonstocked	20.5		Unspecified		2024 - Pipeline Right of Way, some trees starting to seed into stand. Stand used as snowmobile trail as well.																																									
29	42200 - Natural White Pine	Sawtimber Well	9.3	77	81-110	N/A	2024 - Mutli aged white pine stand ranging from sapling to extra large logs.																																									
<table border="1"> <thead> <tr> <th>Canopy Species</th> <th>% Cover</th> <th>Size Class</th> <th>DBH</th> <th>Age</th> </tr> </thead> <tbody> <tr> <td>White Oak</td> <td>8</td> <td>Log/XLog</td> <td>14</td> <td></td> </tr> <tr> <td>Red Oak</td> <td>2</td> <td>Log</td> <td>10</td> <td></td> </tr> <tr> <td>Bigtooth Aspen</td> <td>5</td> <td>Pole</td> <td>6</td> <td></td> </tr> <tr> <td>White Pine</td> <td>80</td> <td>Log</td> <td>12</td> <td>77</td> </tr> <tr> <td>Red Pine</td> <td>5</td> <td>Log/Pole</td> <td>10</td> <td></td> </tr> </tbody> </table>		Canopy Species	% Cover	Size Class	DBH	Age	White Oak	8	Log/XLog	14		Red Oak	2	Log	10		Bigtooth Aspen	5	Pole	6		White Pine	80	Log	12	77	Red Pine	5	Log/Pole	10		<table border="1"> <thead> <tr> <th>Sub-Canopy Species</th> <th>Density</th> <th>Avg. Height</th> <th>Size</th> </tr> </thead> <tbody> <tr> <td>White Pine</td> <td>Low</td> <td>Variable</td> <td>Sapling</td> </tr> </tbody> </table>		Sub-Canopy Species	Density	Avg. Height	Size	White Pine	Low	Variable	Sapling							
Canopy Species	% Cover	Size Class	DBH	Age																																												
White Oak	8	Log/XLog	14																																													
Red Oak	2	Log	10																																													
Bigtooth Aspen	5	Pole	6																																													
White Pine	80	Log	12	77																																												
Red Pine	5	Log/Pole	10																																													
Sub-Canopy Species	Density	Avg. Height	Size																																													
White Pine	Low	Variable	Sapling																																													
30	4130 - Aspen	Poletimber Well	8.4	49	81-110	N/A	2023 - Fulls stocked stand of aspen, with larger pine mixed in stand2013 - Some scattered oak and white pine. Stocking is dense and good quality aspen.																																									
<table border="1"> <thead> <tr> <th>Canopy Species</th> <th>% Cover</th> <th>Size Class</th> <th>DBH</th> <th>Age</th> </tr> </thead> <tbody> <tr> <td>Jack Pine</td> <td>5</td> <td>Pole/Log</td> <td>9</td> <td></td> </tr> <tr> <td>Red Pine</td> <td>5</td> <td>Log</td> <td>12</td> <td></td> </tr> <tr> <td>White Pine</td> <td>5</td> <td>Pole</td> <td>8</td> <td></td> </tr> <tr> <td>Bigtooth Aspen</td> <td>80</td> <td>Pole/Log</td> <td>9</td> <td>49</td> </tr> <tr> <td>White Oak</td> <td>5</td> <td>Log</td> <td>14</td> <td></td> </tr> </tbody> </table>		Canopy Species	% Cover	Size Class	DBH	Age	Jack Pine	5	Pole/Log	9		Red Pine	5	Log	12		White Pine	5	Pole	8		Bigtooth Aspen	80	Pole/Log	9	49	White Oak	5	Log	14																		
Canopy Species	% Cover	Size Class	DBH	Age																																												
Jack Pine	5	Pole/Log	9																																													
Red Pine	5	Log	12																																													
White Pine	5	Pole	8																																													
Bigtooth Aspen	80	Pole/Log	9	49																																												
White Oak	5	Log	14																																													



Stand	Level 4 Cover Type	Size Density	Acres	Stand Age	BA Range	Managed Site	General Comments																																			
31	42260 - Natural Pine, Mixed Deciduous	Poletimber Medium	7.0	64	1-50	N/A	2023 - Stand is filling in nicely with white pine.2013 - Poor quality wood. Stocking is variable. Almost like an old opening filling.																																			
<table border="1"> <thead> <tr> <th>Canopy Species</th> <th>% Cover</th> <th>Size Class</th> <th>DBH</th> <th>Age</th> </tr> </thead> <tbody> <tr> <td>Jack Pine</td> <td>30</td> <td>Pole</td> <td>8</td> <td>64</td> </tr> <tr> <td>Bigtooth Aspen</td> <td>30</td> <td>Pole</td> <td>8</td> <td></td> </tr> <tr> <td>White Pine</td> <td>20</td> <td>Pole</td> <td>8</td> <td></td> </tr> <tr> <td>Red Pine</td> <td>20</td> <td>Log</td> <td>12</td> <td></td> </tr> </tbody> </table>		Canopy Species	% Cover	Size Class	DBH	Age	Jack Pine	30	Pole	8	64	Bigtooth Aspen	30	Pole	8		White Pine	20	Pole	8		Red Pine	20	Log	12		<table border="1"> <thead> <tr> <th>Sub-Canopy Species</th> <th>Density</th> <th>Avg. Height</th> <th>Size</th> </tr> </thead> <tbody> <tr> <td>White Pine</td> <td>Low</td> <td>Variable</td> <td>Sapling</td> </tr> </tbody> </table>		Sub-Canopy Species	Density	Avg. Height	Size	White Pine	Low	Variable	Sapling						
Canopy Species	% Cover	Size Class	DBH	Age																																						
Jack Pine	30	Pole	8	64																																						
Bigtooth Aspen	30	Pole	8																																							
White Pine	20	Pole	8																																							
Red Pine	20	Log	12																																							
Sub-Canopy Species	Density	Avg. Height	Size																																							
White Pine	Low	Variable	Sapling																																							
32	42100 - Planted White Pine	Sapling Well	2.7	10	Immature	N/A	2024 - Well site is planted to white pine, has Jack pine voolinteries as well. 2014 - Planted to White Pine 2000 - Abandoned well site plugged in 2000																																			
<table border="1"> <thead> <tr> <th>Canopy Species</th> <th>% Cover</th> <th>Size Class</th> <th>DBH</th> <th>Age</th> </tr> </thead> <tbody> <tr> <td>Jack Pine</td> <td>20</td> <td>Sapling</td> <td>1</td> <td></td> </tr> <tr> <td>White Pine</td> <td>80</td> <td>Sapling</td> <td>1</td> <td>10</td> </tr> </tbody> </table>		Canopy Species	% Cover	Size Class	DBH	Age	Jack Pine	20	Sapling	1		White Pine	80	Sapling	1	10																										
Canopy Species	% Cover	Size Class	DBH	Age																																						
Jack Pine	20	Sapling	1																																							
White Pine	80	Sapling	1	10																																						
33	42121 - Planted Jack Pine, Mixed Deciduous	Sapling Well	67.3	16	Immature	N/A	2023 - Planted Jack Pine is in good shape, 2-3 inch in DBH.2013 - Some cherry and red maple competition, mostly in west end. Does not need spraying. Jack pine about 3-5' tall. Pockets of A4 and J4-5 scattered, mostly in north end.2008 Stand was planted to Jack Pine Under FTP# C62-769																																			
<table border="1"> <thead> <tr> <th>Canopy Species</th> <th>% Cover</th> <th>Size Class</th> <th>DBH</th> <th>Age</th> </tr> </thead> <tbody> <tr> <td>Red Maple</td> <td>20</td> <td>Sapling</td> <td>2</td> <td></td> </tr> <tr> <td>Black Cherry</td> <td>10</td> <td>Sapling</td> <td>2</td> <td></td> </tr> </tbody> </table>		Canopy Species	% Cover	Size Class	DBH	Age	Red Maple	20	Sapling	2		Black Cherry	10	Sapling	2																											
Canopy Species	% Cover	Size Class	DBH	Age																																						
Red Maple	20	Sapling	2																																							
Black Cherry	10	Sapling	2																																							
34	4132 - Aspen, Jack Pine	Sapling Medium	22.0	5	Immature	N/A	2024 - Stand has large scattered white oak and white pine. We're aspen clones are established stand is fully stocked. Jack pine is starting to show up in areas that are open. Stand should continue to fill in with Jack pine and white pine. 2019 - Stand was Final Harvested under Contract Red Pine Colored Glasses (61-127-01). A few green trees were marked throughout stand that were saved.																																			
<table border="1"> <thead> <tr> <th>Canopy Species</th> <th>% Cover</th> <th>Size Class</th> <th>DBH</th> <th>Age</th> </tr> </thead> <tbody> <tr> <td>Bigtooth Aspen</td> <td>45</td> <td>Sapling</td> <td>1</td> <td>5</td> </tr> <tr> <td>White Pine</td> <td>2</td> <td>Log/Pole</td> <td>12</td> <td></td> </tr> <tr> <td>Red Maple</td> <td>15</td> <td>Pole</td> <td>8</td> <td></td> </tr> <tr> <td>Red Oak</td> <td>15</td> <td>Sapling</td> <td>1</td> <td></td> </tr> <tr> <td>Jack Pine</td> <td>20</td> <td>Sapling</td> <td>1</td> <td></td> </tr> <tr> <td>White Oak</td> <td>3</td> <td>Log</td> <td>14</td> <td></td> </tr> </tbody> </table>		Canopy Species	% Cover	Size Class	DBH	Age	Bigtooth Aspen	45	Sapling	1	5	White Pine	2	Log/Pole	12		Red Maple	15	Pole	8		Red Oak	15	Sapling	1		Jack Pine	20	Sapling	1		White Oak	3	Log	14							
Canopy Species	% Cover	Size Class	DBH	Age																																						
Bigtooth Aspen	45	Sapling	1	5																																						
White Pine	2	Log/Pole	12																																							
Red Maple	15	Pole	8																																							
Red Oak	15	Sapling	1																																							
Jack Pine	20	Sapling	1																																							
White Oak	3	Log	14																																							
35	42221 - Natural Jack Pine, Mixed Deciduous	Poletimber Medium	41.6	49	1-50	N/A	2024 - Pole size Jack Pine with some white pine and aspen scattered throughout it. Stand has several open areas that are slowly starting to fill in. Clearcut stand in future to expand aspen clones in stand.																																			
<table border="1"> <thead> <tr> <th>Canopy Species</th> <th>% Cover</th> <th>Size Class</th> <th>DBH</th> <th>Age</th> </tr> </thead> <tbody> <tr> <td>Bigtooth Aspen</td> <td>30</td> <td>Pole/Sapling</td> <td>6</td> <td></td> </tr> <tr> <td>Jack Pine</td> <td>70</td> <td>Pole</td> <td>6</td> <td>49</td> </tr> </tbody> </table>		Canopy Species	% Cover	Size Class	DBH	Age	Bigtooth Aspen	30	Pole/Sapling	6		Jack Pine	70	Pole	6	49	<table border="1"> <thead> <tr> <th>Sub-Canopy Species</th> <th>Density</th> <th>Avg. Height</th> <th>Size</th> </tr> </thead> <tbody> <tr> <td>Jack Pine</td> <td>Medium</td> <td>Variable</td> <td>Sapling</td> </tr> <tr> <td>Red Oak</td> <td>Low</td> <td>Variable</td> <td>Sapling</td> </tr> <tr> <td>White Pine</td> <td>Low</td> <td>Variable</td> <td>Sapling</td> </tr> </tbody> </table>		Sub-Canopy Species	Density	Avg. Height	Size	Jack Pine	Medium	Variable	Sapling	Red Oak	Low	Variable	Sapling	White Pine	Low	Variable	Sapling								
Canopy Species	% Cover	Size Class	DBH	Age																																						
Bigtooth Aspen	30	Pole/Sapling	6																																							
Jack Pine	70	Pole	6	49																																						
Sub-Canopy Species	Density	Avg. Height	Size																																							
Jack Pine	Medium	Variable	Sapling																																							
Red Oak	Low	Variable	Sapling																																							
White Pine	Low	Variable	Sapling																																							



Stand	Level 4 Cover Type	Size Density	Acres	Stand Age	BA Range	Managed Site	General Comments	
<b>36</b>	4131 - Aspen, Oak	Sapling Well	26.6	4	Immature	N/A	2024 - Stand has regenerated nicely and is currently fully stocked. Stand has larger white pine and oak scattered throughout the stand. Overstory trees make up less than 20% of canopy cover. Not enough canopy to go after. 2019 - Stand was Final Harvested under Contract Red Pine Colored Glasses (61-127-01)	
<b>Canopy Species</b>		<b>% Cover</b>	<b>Size Class</b>	<b>DBH</b>	<b>Age</b>			
Red Maple		20	Sapling	1				
Red Oak		10	Sapling	1	4			
Paper Birch		1	Pole	8				
Bigtooth Aspen		49	Sapling	1	4			
White Oak		10	Log/XLog	16				
White Pine		10	Log	10				
<b>37</b>	42110 - Planted Red Pine	Poletimber Well	44.3	34	51-80	N/A	2023 - Stand has turned into pole stand this year or entry. Might be able to 3rd row thin stand next year of entry. 2013 - Almost a pole stand. Trees are about 20' tall. 1990 - Stand was planted to red Pine under FTP C62-401.	
<b>Canopy Species</b>		<b>% Cover</b>	<b>Size Class</b>	<b>DBH</b>	<b>Age</b>			
Jack Pine		10	Pole/Sapling	5				
Red Pine		90	Pole/Sapling	5	34			
<b>39</b>	310 - Herbaceous Openland	Nonstocked	1.2		Unspecified		2024 - Wellsite	
<b>40</b>	622 - Lowland Shrub	Nonstocked	60.9		Unspecified	No	2023 - South Brand of Boardman River runs through stand. Some portion of stand have some mixed trees others is lowland shrub mostly made up of. tag alder.	
<b>41</b>	4133 - Aspen, Mixed Pine	Poletimber Medium	18.1	35	1-50	N/A	2024 - Stand has multiple age aspen in it. Stand has larger oak and white pine. Consider clearcutting next year of entry to expand aspen into several openings located within stand boundaries.	
<b>Canopy Species</b>		<b>% Cover</b>	<b>Size Class</b>	<b>DBH</b>	<b>Age</b>			
Black Cherry		10	Pole/Sapling	6				
Bigtooth Aspen		55	Pole/Sapling	6	35			
White Pine		30	Pole/Sapling	6				
Red Oak		5	Log/XLog	16				
<b>Sub-Canopy Species</b>		<b>Density</b>	<b>Avg. Height</b>	<b>Size</b>				
White Pine		Low	Variable	Sapling				
<b>42</b>	4133 - Aspen, Mixed Pine	Poletimber Well	11.6	39	51-80	N/A	2023 - Stand is transition stand down to river. Aspen has become pole size this year of entry. There are large oak and pine as the stand drops down to the river. Most of stand would fall into river buffer and won't be able to be harvested due to BMP guidelines, remember to follow BMP guidelines for any future harvest of stand. 2013 - Stand is converting from sapling to pole.	
<b>Canopy Species</b>		<b>% Cover</b>	<b>Size Class</b>	<b>DBH</b>	<b>Age</b>			
Bigtooth Aspen		60	Pole/Sapling	5	39			
Red Oak		5	Log/XLog	16				
White Pine		20	Pole/Sapling	5				
Red Maple		10	Pole/Sapling	5				
White Oak		5	Log/XLog	16				
<b>Sub-Canopy Species</b>		<b>Density</b>	<b>Avg. Height</b>	<b>Size</b>				
Red Oak		Low	< 5 feet	Sapling				
White Oak		Low	< 5 feet	Sapling				





Stand	Level 4 Cover Type	Size Density	Acres	Stand Age	BA Range	Managed Site	General Comments																																													
<b>44</b>	42210 - Natural Red Pine	Poletimber Poor	41.5	60	1-50	N/A	2024 - Stand has pockets of nice, advanced regeneration in open areas. Red pine is still a bit too small to remove the top at this point. Might be worth holding red pine till aspen regeneration hits rotation cycle and clearcut stand at that point. 2007 - Stand was thinned under contract South Branch Red - Jack (61-028-06). Sale consisted of the Removal all jack pine, red maple and aspen trees and all red pine trees > 16" DBH.																																													
<table border="1"> <thead> <tr> <th>Canopy Species</th> <th>% Cover</th> <th>Size Class</th> <th>DBH</th> <th>Age</th> </tr> </thead> <tbody> <tr> <td>White Pine</td> <td>10</td> <td>Pole</td> <td>8</td> <td></td> </tr> <tr> <td>Red Pine</td> <td>80</td> <td>Pole</td> <td>8</td> <td>60</td> </tr> <tr> <td>Red Oak</td> <td>10</td> <td>Log</td> <td>16</td> <td></td> </tr> </tbody> </table>		Canopy Species	% Cover	Size Class	DBH	Age		White Pine	10	Pole	8		Red Pine	80	Pole	8	60	Red Oak	10	Log	16		<table border="1"> <thead> <tr> <th>Sub-Canopy Species</th> <th>Density</th> <th>Avg. Height</th> <th>Size</th> </tr> </thead> <tbody> <tr> <td>Jack Pine</td> <td>Medium</td> <td>5 - 10 feet</td> <td>Sapling</td> </tr> <tr> <td>Bigtooth Aspen</td> <td>Medium</td> <td>5 - 10 feet</td> <td>Sapling</td> </tr> <tr> <td>White Oak</td> <td>Medium</td> <td>Variable</td> <td>Sapling</td> </tr> <tr> <td>Red Maple</td> <td>Medium</td> <td>5 - 10 feet</td> <td>Sapling</td> </tr> <tr> <td>Red Oak</td> <td>Low</td> <td>Variable</td> <td>Sapling</td> </tr> <tr> <td>White Pine</td> <td>Low</td> <td>5 - 10 feet</td> <td>Sapling</td> </tr> </tbody> </table>		Sub-Canopy Species	Density	Avg. Height	Size	Jack Pine	Medium	5 - 10 feet	Sapling	Bigtooth Aspen	Medium	5 - 10 feet	Sapling	White Oak	Medium	Variable	Sapling	Red Maple	Medium	5 - 10 feet	Sapling	Red Oak	Low	Variable	Sapling	White Pine	Low	5 - 10 feet	Sapling
Canopy Species	% Cover	Size Class	DBH	Age																																																
White Pine	10	Pole	8																																																	
Red Pine	80	Pole	8	60																																																
Red Oak	10	Log	16																																																	
Sub-Canopy Species	Density	Avg. Height	Size																																																	
Jack Pine	Medium	5 - 10 feet	Sapling																																																	
Bigtooth Aspen	Medium	5 - 10 feet	Sapling																																																	
White Oak	Medium	Variable	Sapling																																																	
Red Maple	Medium	5 - 10 feet	Sapling																																																	
Red Oak	Low	Variable	Sapling																																																	
White Pine	Low	5 - 10 feet	Sapling																																																	
<b>45</b>	42220 - Natural Jack Pine	Poletimber Well	29.7	54	51-80	N/A	2024 - Fully stocked Jack Pine Stand																																													
<table border="1"> <thead> <tr> <th>Canopy Species</th> <th>% Cover</th> <th>Size Class</th> <th>DBH</th> <th>Age</th> </tr> </thead> <tbody> <tr> <td>Bigtooth Aspen</td> <td>10</td> <td>Pole</td> <td>6</td> <td></td> </tr> <tr> <td>White Pine</td> <td>10</td> <td>Pole</td> <td>6</td> <td></td> </tr> <tr> <td>Jack Pine</td> <td>80</td> <td>Pole</td> <td>8</td> <td>54</td> </tr> </tbody> </table>		Canopy Species	% Cover	Size Class	DBH	Age	Bigtooth Aspen	10	Pole	6		White Pine	10	Pole	6		Jack Pine	80	Pole	8	54																															
Canopy Species	% Cover	Size Class	DBH	Age																																																
Bigtooth Aspen	10	Pole	6																																																	
White Pine	10	Pole	6																																																	
Jack Pine	80	Pole	8	54																																																
<b>46</b>	4131 - Aspen, Oak	Sapling Well	43.5	16	Immature	N/A	2024 - Aspen has taken over stand since last year of entry. Stand should continue to push towards aspen / jack pine stand in future. Oak has been heavily browsed by deer. Stand has some scattered large oaks left in it. 2008 - Sale was final harvested under contract South Branch Mix sale (61-080-06-01). Scattered oaks were left scattered in sale area.																																													
<table border="1"> <thead> <tr> <th>Canopy Species</th> <th>% Cover</th> <th>Size Class</th> <th>DBH</th> <th>Age</th> </tr> </thead> <tbody> <tr> <td>Bigtooth Aspen</td> <td>40</td> <td>Sapling</td> <td>1</td> <td>16</td> </tr> <tr> <td>Jack Pine</td> <td>10</td> <td>Sapling</td> <td>1</td> <td></td> </tr> <tr> <td>Red Oak</td> <td>20</td> <td>Sapling</td> <td>1</td> <td></td> </tr> <tr> <td>Paper Birch</td> <td>10</td> <td>Sapling</td> <td>1</td> <td></td> </tr> <tr> <td>Red Maple</td> <td>20</td> <td>Sapling</td> <td>1</td> <td>16</td> </tr> </tbody> </table>		Canopy Species	% Cover	Size Class	DBH	Age		Bigtooth Aspen	40	Sapling	1	16	Jack Pine	10	Sapling	1		Red Oak	20	Sapling	1		Paper Birch	10	Sapling	1		Red Maple	20	Sapling	1	16																				
Canopy Species	% Cover	Size Class	DBH	Age																																																
Bigtooth Aspen	40	Sapling	1	16																																																
Jack Pine	10	Sapling	1																																																	
Red Oak	20	Sapling	1																																																	
Paper Birch	10	Sapling	1																																																	
Red Maple	20	Sapling	1	16																																																
<b>47</b>	4132 - Aspen, Jack Pine	Poletimber Well	15.3	41	51-80	N/A	2024 - Stand does have some multi age aspen in it with a few portions of the stand being sapling stage yet. Final harvest in 10 years should ensure aspen clone are even aged across stand in future.																																													
<table border="1"> <thead> <tr> <th>Canopy Species</th> <th>% Cover</th> <th>Size Class</th> <th>DBH</th> <th>Age</th> </tr> </thead> <tbody> <tr> <td>Jack Pine</td> <td>25</td> <td>Pole</td> <td>6</td> <td></td> </tr> <tr> <td>White Pine</td> <td>15</td> <td>Pole</td> <td>6</td> <td></td> </tr> <tr> <td>Bigtooth Aspen</td> <td>60</td> <td>Pole/Sapling</td> <td>6</td> <td>41</td> </tr> </tbody> </table>		Canopy Species	% Cover	Size Class	DBH	Age		Jack Pine	25	Pole	6		White Pine	15	Pole	6		Bigtooth Aspen	60	Pole/Sapling	6	41	<table border="1"> <thead> <tr> <th>Sub-Canopy Species</th> <th>Density</th> <th>Avg. Height</th> <th>Size</th> </tr> </thead> <tbody> <tr> <td>White Pine</td> <td>Medium</td> <td>Variable</td> <td>Sapling</td> </tr> </tbody> </table>		Sub-Canopy Species	Density	Avg. Height	Size	White Pine	Medium	Variable	Sapling																				
Canopy Species	% Cover	Size Class	DBH	Age																																																
Jack Pine	25	Pole	6																																																	
White Pine	15	Pole	6																																																	
Bigtooth Aspen	60	Pole/Sapling	6	41																																																
Sub-Canopy Species	Density	Avg. Height	Size																																																	
White Pine	Medium	Variable	Sapling																																																	
<b>48</b>	310 - Herbaceous Openland	Nonstocked	9.0		Unspecified		2024 - Pipeline runs through stand, Pipeline right away had been cleared. Pipeline right of way is also used as snowmobile trail.																																													
<b>51</b>	42290 - Natural Mixed Pine	Sawtimber Well	7.9	82	111-140	N/A	2024 - Mixed pine stand some larger white and red pine in stand. Due to small size of stand hold stand till next year of entry and thin with adjacent stands.																																													
<table border="1"> <thead> <tr> <th>Canopy Species</th> <th>% Cover</th> <th>Size Class</th> <th>DBH</th> <th>Age</th> </tr> </thead> <tbody> <tr> <td>Bigtooth Aspen</td> <td>5</td> <td>Pole</td> <td>8</td> <td></td> </tr> <tr> <td>White Pine</td> <td>55</td> <td>Log</td> <td>12</td> <td>82</td> </tr> <tr> <td>White Oak</td> <td>5</td> <td>Log</td> <td>12</td> <td></td> </tr> <tr> <td>Red Pine</td> <td>30</td> <td>Log</td> <td>12</td> <td></td> </tr> <tr> <td>Jack Pine</td> <td>5</td> <td>Pole</td> <td>8</td> <td></td> </tr> </tbody> </table>		Canopy Species	% Cover	Size Class	DBH	Age		Bigtooth Aspen	5	Pole	8		White Pine	55	Log	12	82	White Oak	5	Log	12		Red Pine	30	Log	12		Jack Pine	5	Pole	8		<table border="1"> <thead> <tr> <th>Sub-Canopy Species</th> <th>Density</th> <th>Avg. Height</th> <th>Size</th> </tr> </thead> <tbody> <tr> <td>White Pine</td> <td>Medium</td> <td>Variable</td> <td>Sapling</td> </tr> </tbody> </table>		Sub-Canopy Species	Density	Avg. Height	Size	White Pine	Medium	Variable	Sapling										
Canopy Species	% Cover	Size Class	DBH	Age																																																
Bigtooth Aspen	5	Pole	8																																																	
White Pine	55	Log	12	82																																																
White Oak	5	Log	12																																																	
Red Pine	30	Log	12																																																	
Jack Pine	5	Pole	8																																																	
Sub-Canopy Species	Density	Avg. Height	Size																																																	
White Pine	Medium	Variable	Sapling																																																	



Stand	Level 4 Cover Type	Size Density	Acres	Stand Age	BA Range	Managed Site	General Comments																																																																			
<b>52</b>	4132 - Aspen, Jack Pine	Poletimber Well	47.2	26	Immature	N/A	2024 - Stand is pole size at this time, but still has a good amount of sapling trees in it. Stand has larger oak and pine that were left during clear-cut 25 years ago. 1998 - Stand was clearcut under contract Section 8 Sale (61-040-96).																																																																			
<table border="1"> <thead> <tr> <th>Canopy Species</th> <th>% Cover</th> <th>Size Class</th> <th>DBH</th> <th>Age</th> </tr> </thead> <tbody> <tr><td>White Oak</td><td>8</td><td>Sapling/Pole</td><td>4</td><td></td></tr> <tr><td>Red Oak</td><td>5</td><td>Sapling</td><td>3</td><td></td></tr> <tr><td>Bigtooth Aspen</td><td>50</td><td>Pole/Sapling</td><td>5</td><td>26</td></tr> <tr><td>Red Pine</td><td>2</td><td>Log</td><td>16</td><td></td></tr> <tr><td>Red Oak</td><td>5</td><td>Log/XLog</td><td>16</td><td></td></tr> <tr><td>White Pine</td><td>3</td><td>Log/XLog</td><td>16</td><td></td></tr> <tr><td>Jack Pine</td><td>25</td><td>Pole/Sapling</td><td>5</td><td>26</td></tr> <tr><td>White Pine</td><td>2</td><td>Sapling</td><td>2</td><td></td></tr> </tbody> </table>		Canopy Species	% Cover	Size Class	DBH	Age	White Oak	8	Sapling/Pole	4		Red Oak	5	Sapling	3		Bigtooth Aspen	50	Pole/Sapling	5	26	Red Pine	2	Log	16		Red Oak	5	Log/XLog	16		White Pine	3	Log/XLog	16		Jack Pine	25	Pole/Sapling	5	26	White Pine	2	Sapling	2																													
Canopy Species	% Cover	Size Class	DBH	Age																																																																						
White Oak	8	Sapling/Pole	4																																																																							
Red Oak	5	Sapling	3																																																																							
Bigtooth Aspen	50	Pole/Sapling	5	26																																																																						
Red Pine	2	Log	16																																																																							
Red Oak	5	Log/XLog	16																																																																							
White Pine	3	Log/XLog	16																																																																							
Jack Pine	25	Pole/Sapling	5	26																																																																						
White Pine	2	Sapling	2																																																																							
<b>53</b>	42260 - Natural Pine, Mixed Deciduous	Sawtimber Well	25.7	58	111-140	N/A	2023 - Stand is transition stand down to river, stand has steep hill dropping down to Boardman River. Stand has several legacy red pine and white pine in. Legacy trees appear to be seed source for adjacent stand. This would be a good stand with river on one side and steep hill to manage stand for big / legacy trees. 2013 - Aspen mixed in with red pine and jack pine. Lots of size classes in red pine. Aspen looks ready to cut. Additional BA 110.																																																																			
<table border="1"> <thead> <tr> <th>Canopy Species</th> <th>% Cover</th> <th>Size Class</th> <th>DBH</th> <th>Age</th> </tr> </thead> <tbody> <tr><td>Red Maple</td><td>10</td><td>Pole</td><td>8</td><td></td></tr> <tr><td>Red Oak</td><td>5</td><td>Log</td><td>14</td><td></td></tr> <tr><td>Bigtooth Aspen</td><td>15</td><td>Log/Pole</td><td>10</td><td></td></tr> <tr><td>Jack Pine</td><td>10</td><td>Pole</td><td>8</td><td></td></tr> <tr><td>Red Pine</td><td>45</td><td>Log/Pole</td><td>10</td><td>58</td></tr> <tr><td>White Pine</td><td>15</td><td>XLog</td><td>46</td><td></td></tr> </tbody> </table>		Canopy Species	% Cover	Size Class	DBH	Age	Red Maple	10	Pole	8		Red Oak	5	Log	14		Bigtooth Aspen	15	Log/Pole	10		Jack Pine	10	Pole	8		Red Pine	45	Log/Pole	10	58	White Pine	15	XLog	46		<table border="1"> <thead> <tr> <th>Sub-Canopy Species</th> <th>Density</th> <th>Avg. Height</th> <th>Size</th> </tr> </thead> <tbody> <tr> <td>White Pine</td> <td>Low</td> <td>5 - 10 feet</td> <td>Sapling</td> </tr> </tbody> </table>		Sub-Canopy Species	Density	Avg. Height	Size	White Pine	Low	5 - 10 feet	Sapling																												
Canopy Species	% Cover	Size Class	DBH	Age																																																																						
Red Maple	10	Pole	8																																																																							
Red Oak	5	Log	14																																																																							
Bigtooth Aspen	15	Log/Pole	10																																																																							
Jack Pine	10	Pole	8																																																																							
Red Pine	45	Log/Pole	10	58																																																																						
White Pine	15	XLog	46																																																																							
Sub-Canopy Species	Density	Avg. Height	Size																																																																							
White Pine	Low	5 - 10 feet	Sapling																																																																							
<b>54</b>	4191 - Mixed Upland Deciduous with Conifer	Poletimber Well	4.4	90	51-80	N/A	2024 Scattered large oak. appears to be old species removal lots of pole sized red maple and aspen in stand.																																																																			
<table border="1"> <thead> <tr> <th>Canopy Species</th> <th>% Cover</th> <th>Size Class</th> <th>DBH</th> <th>Age</th> </tr> </thead> <tbody> <tr><td>Bigtooth Aspen</td><td>15</td><td>Pole</td><td>8</td><td></td></tr> <tr><td>Red Oak</td><td>25</td><td>Log/Pole</td><td>10</td><td></td></tr> <tr><td>Red Maple</td><td>10</td><td>Pole</td><td>8</td><td></td></tr> <tr><td>White Oak</td><td>30</td><td>Log/Pole</td><td>12</td><td>90</td></tr> <tr><td>White Pine</td><td>20</td><td>Pole</td><td>8</td><td></td></tr> </tbody> </table>		Canopy Species	% Cover	Size Class	DBH	Age	Bigtooth Aspen	15	Pole	8		Red Oak	25	Log/Pole	10		Red Maple	10	Pole	8		White Oak	30	Log/Pole	12	90	White Pine	20	Pole	8		<table border="1"> <thead> <tr> <th>Sub-Canopy Species</th> <th>Density</th> <th>Avg. Height</th> <th>Size</th> </tr> </thead> <tbody> <tr> <td>White Pine</td> <td>Low</td> <td>Variable</td> <td>Sapling</td> </tr> </tbody> </table>		Sub-Canopy Species	Density	Avg. Height	Size	White Pine	Low	Variable	Sapling																																	
Canopy Species	% Cover	Size Class	DBH	Age																																																																						
Bigtooth Aspen	15	Pole	8																																																																							
Red Oak	25	Log/Pole	10																																																																							
Red Maple	10	Pole	8																																																																							
White Oak	30	Log/Pole	12	90																																																																						
White Pine	20	Pole	8																																																																							
Sub-Canopy Species	Density	Avg. Height	Size																																																																							
White Pine	Low	Variable	Sapling																																																																							
<b>57</b>	42290 - Natural Mixed Pine	Sawtimber Well	206.8	75	111-140	N/A	2024 - Natural mixed pine stand. Going to treat half stand this year of entry. Adding mixed pine objective during time period were harvesting mixed pine is put on hold. Treatment may need to be tweaked to full fill management goals in the future. Stand has Many age and size classes. Stand has a very full stocked understory in places where the stand is more open. Aspen is in rough shape in some areas starting to die off. Stand also has a decent amount of Jack Pine in pockets within the stand.																																																																			
<table border="1"> <thead> <tr> <th>Canopy Species</th> <th>% Cover</th> <th>Size Class</th> <th>DBH</th> <th>Age</th> </tr> </thead> <tbody> <tr><td>Jack Pine</td><td>13</td><td>Pole</td><td>8</td><td></td></tr> <tr><td>Red Oak</td><td>3</td><td>Log</td><td>14</td><td></td></tr> <tr><td>Red Maple</td><td>3</td><td>Pole</td><td>8</td><td></td></tr> <tr><td>White Oak</td><td>2</td><td>Log</td><td>14</td><td></td></tr> <tr><td>Bigtooth Aspen</td><td>8</td><td>Log/Pole</td><td>10</td><td></td></tr> <tr><td>Red Pine</td><td>48</td><td>Log/Pole</td><td>10</td><td>75</td></tr> <tr><td>White Pine</td><td>23</td><td>Log/Pole</td><td>10</td><td></td></tr> </tbody> </table>		Canopy Species	% Cover	Size Class	DBH	Age	Jack Pine	13	Pole	8		Red Oak	3	Log	14		Red Maple	3	Pole	8		White Oak	2	Log	14		Bigtooth Aspen	8	Log/Pole	10		Red Pine	48	Log/Pole	10	75	White Pine	23	Log/Pole	10		<table border="1"> <thead> <tr> <th>Sub-Canopy Species</th> <th>Density</th> <th>Avg. Height</th> <th>Size</th> </tr> </thead> <tbody> <tr><td>Red Maple</td><td>Low</td><td>Variable</td><td>Sapling</td></tr> <tr><td>Red Pine</td><td>Low</td><td>Variable</td><td>Sapling</td></tr> <tr><td>White Pine</td><td>Medium</td><td>Variable</td><td>Sapling</td></tr> <tr><td>White Oak</td><td>Medium</td><td>Variable</td><td>Sapling</td></tr> <tr><td>Red Oak</td><td>Medium</td><td>Variable</td><td>Sapling</td></tr> <tr><td>Jack Pine</td><td>Low</td><td>Variable</td><td>Sapling</td></tr> </tbody> </table>		Sub-Canopy Species	Density	Avg. Height	Size	Red Maple	Low	Variable	Sapling	Red Pine	Low	Variable	Sapling	White Pine	Medium	Variable	Sapling	White Oak	Medium	Variable	Sapling	Red Oak	Medium	Variable	Sapling	Jack Pine	Low	Variable	Sapling			
Canopy Species	% Cover	Size Class	DBH	Age																																																																						
Jack Pine	13	Pole	8																																																																							
Red Oak	3	Log	14																																																																							
Red Maple	3	Pole	8																																																																							
White Oak	2	Log	14																																																																							
Bigtooth Aspen	8	Log/Pole	10																																																																							
Red Pine	48	Log/Pole	10	75																																																																						
White Pine	23	Log/Pole	10																																																																							
Sub-Canopy Species	Density	Avg. Height	Size																																																																							
Red Maple	Low	Variable	Sapling																																																																							
Red Pine	Low	Variable	Sapling																																																																							
White Pine	Medium	Variable	Sapling																																																																							
White Oak	Medium	Variable	Sapling																																																																							
Red Oak	Medium	Variable	Sapling																																																																							
Jack Pine	Low	Variable	Sapling																																																																							
<b>59</b>	500 - Water	Nonstocked	3.7		Unspecified	No	2023 - Seasonal flooded																																																																			



Stand	Level 4 Cover Type	Size Density	Acres	Stand Age	BA Range	Managed Site	General Comments																																																		
<b>60</b>	42110 - Planted Red Pine	Sawtimber Well	37.1	75	171-200	N/A	2024 - Stand has scattered large oaks. Stand is ready o be thinned. Basal area is greater than 180 at this time. 2013 - Decent quality, 4-5 stick trees. Some scattered oak. Most of the defect has been thinned out. Most tops still have room to expand. Thinned red pine as part of 61-061-96-01.																																																		
<table border="1"> <thead> <tr> <th>Canopy Species</th> <th>% Cover</th> <th>Size Class</th> <th>DBH</th> <th>Age</th> </tr> </thead> <tbody> <tr> <td>Red Oak</td> <td>5</td> <td>Log</td> <td>14</td> <td></td> </tr> <tr> <td>Red Pine</td> <td>95</td> <td>Log/Pole</td> <td>11</td> <td>75</td> </tr> </tbody> </table>		Canopy Species	% Cover	Size Class	DBH	Age		Red Oak	5	Log	14		Red Pine	95	Log/Pole	11	75	<table border="1"> <thead> <tr> <th>Sub-Canopy Species</th> <th>Density</th> <th>Avg. Height</th> <th>Size</th> </tr> </thead> <tbody> <tr> <td>Red Maple</td> <td>Low</td> <td>Variable</td> <td>Sapling</td> </tr> <tr> <td>Bigtooth Aspen</td> <td>Low</td> <td>Variable</td> <td>Sapling</td> </tr> <tr> <td>Red Oak</td> <td>Low</td> <td>Variable</td> <td>Sapling</td> </tr> <tr> <td>White Oak</td> <td>Low</td> <td>Variable</td> <td>Sapling</td> </tr> <tr> <td>White Pine</td> <td>Low</td> <td>Variable</td> <td>Sapling</td> </tr> </tbody> </table>		Sub-Canopy Species	Density	Avg. Height	Size	Red Maple	Low	Variable	Sapling	Bigtooth Aspen	Low	Variable	Sapling	Red Oak	Low	Variable	Sapling	White Oak	Low	Variable	Sapling	White Pine	Low	Variable	Sapling														
Canopy Species	% Cover	Size Class	DBH	Age																																																					
Red Oak	5	Log	14																																																						
Red Pine	95	Log/Pole	11	75																																																					
Sub-Canopy Species	Density	Avg. Height	Size																																																						
Red Maple	Low	Variable	Sapling																																																						
Bigtooth Aspen	Low	Variable	Sapling																																																						
Red Oak	Low	Variable	Sapling																																																						
White Oak	Low	Variable	Sapling																																																						
White Pine	Low	Variable	Sapling																																																						
<b>61</b>	6112 - Lowland Aspen	Poletimber Medium	37.1	65	51-80	N/A	2023 - Taylor Creek Runs throughout stand.																																																		
<table border="1"> <thead> <tr> <th>Canopy Species</th> <th>% Cover</th> <th>Size Class</th> <th>DBH</th> <th>Age</th> </tr> </thead> <tbody> <tr> <td>Northern White Cedar</td> <td>15</td> <td>Pole</td> <td>8</td> <td></td> </tr> <tr> <td>Balsam Fir</td> <td>10</td> <td>Pole</td> <td>6</td> <td></td> </tr> <tr> <td>Bigtooth Aspen</td> <td>10</td> <td>Pole</td> <td>6</td> <td></td> </tr> <tr> <td>Quaking Aspen</td> <td>65</td> <td>Pole</td> <td>9</td> <td>65</td> </tr> </tbody> </table>		Canopy Species	% Cover	Size Class	DBH	Age		Northern White Cedar	15	Pole	8		Balsam Fir	10	Pole	6		Bigtooth Aspen	10	Pole	6		Quaking Aspen	65	Pole	9	65	<table border="1"> <thead> <tr> <th>Sub-Canopy Species</th> <th>Density</th> <th>Avg. Height</th> <th>Size</th> </tr> </thead> <tbody> <tr> <td>Tag Alder</td> <td>Medium</td> <td>5 - 10 feet</td> <td>Tall Shrub</td> </tr> </tbody> </table>		Sub-Canopy Species	Density	Avg. Height	Size	Tag Alder	Medium	5 - 10 feet	Tall Shrub																				
Canopy Species	% Cover	Size Class	DBH	Age																																																					
Northern White Cedar	15	Pole	8																																																						
Balsam Fir	10	Pole	6																																																						
Bigtooth Aspen	10	Pole	6																																																						
Quaking Aspen	65	Pole	9	65																																																					
Sub-Canopy Species	Density	Avg. Height	Size																																																						
Tag Alder	Medium	5 - 10 feet	Tall Shrub																																																						
<b>62</b>	4132 - Aspen, Jack Pine	Sapling Well	12.5	19	Immature	N/A	2024 - Stand is planted Jack Pine over topped with aspen at this time. Stand was planted with stand 63 in compartment 61156. 1998 - Stand was final harvested under contract Taylor Creek Aspen (61-151-96) completed																																																		
<table border="1"> <thead> <tr> <th>Canopy Species</th> <th>% Cover</th> <th>Size Class</th> <th>DBH</th> <th>Age</th> </tr> </thead> <tbody> <tr> <td>Red Oak</td> <td>5</td> <td>Sapling</td> <td>1</td> <td></td> </tr> <tr> <td>Bigtooth Aspen</td> <td>60</td> <td>Sapling</td> <td>2</td> <td>19</td> </tr> <tr> <td>Jack Pine</td> <td>35</td> <td>Sapling</td> <td>1</td> <td>19</td> </tr> </tbody> </table>		Canopy Species	% Cover	Size Class	DBH	Age		Red Oak	5	Sapling	1		Bigtooth Aspen	60	Sapling	2	19	Jack Pine	35	Sapling	1	19																																			
Canopy Species	% Cover	Size Class	DBH	Age																																																					
Red Oak	5	Sapling	1																																																						
Bigtooth Aspen	60	Sapling	2	19																																																					
Jack Pine	35	Sapling	1	19																																																					
<b>63</b>	42290 - Natural Mixed Pine	Sawtimber Well	44.2	85	81-110	N/A	2024 - Stand average basal area is right around 105 this year of entry. Stand has fully stocked understory. Aspen and red maple are just getting to merchantability this year of entry. Allow red maple and aspen to grow anther 10 to 20 years and restart stand. Stand does have some legal white pine in it.																																																		
<table border="1"> <thead> <tr> <th>Canopy Species</th> <th>% Cover</th> <th>Size Class</th> <th>DBH</th> <th>Age</th> </tr> </thead> <tbody> <tr> <td>White Pine</td> <td>55</td> <td>Log</td> <td>14</td> <td>85</td> </tr> <tr> <td>Red Pine</td> <td>35</td> <td>Log</td> <td>12</td> <td></td> </tr> <tr> <td>Red Oak</td> <td>10</td> <td>Log</td> <td>12</td> <td></td> </tr> </tbody> </table>		Canopy Species	% Cover	Size Class	DBH	Age		White Pine	55	Log	14	85	Red Pine	35	Log	12		Red Oak	10	Log	12		<table border="1"> <thead> <tr> <th>Sub-Canopy Species</th> <th>Density</th> <th>Avg. Height</th> <th>Size</th> </tr> </thead> <tbody> <tr> <td>Bigtooth Aspen</td> <td>Medium</td> <td>Variable</td> <td>Sapling</td> </tr> <tr> <td>White Pine</td> <td>Full</td> <td>Variable</td> <td>Sapling</td> </tr> <tr> <td>Red Maple</td> <td>Medium</td> <td>Variable</td> <td>Sapling</td> </tr> </tbody> </table>		Sub-Canopy Species	Density	Avg. Height	Size	Bigtooth Aspen	Medium	Variable	Sapling	White Pine	Full	Variable	Sapling	Red Maple	Medium	Variable	Sapling																	
Canopy Species	% Cover	Size Class	DBH	Age																																																					
White Pine	55	Log	14	85																																																					
Red Pine	35	Log	12																																																						
Red Oak	10	Log	12																																																						
Sub-Canopy Species	Density	Avg. Height	Size																																																						
Bigtooth Aspen	Medium	Variable	Sapling																																																						
White Pine	Full	Variable	Sapling																																																						
Red Maple	Medium	Variable	Sapling																																																						
<b>64</b>	42290 - Natural Mixed Pine	Sawtimber Medium	185.9	85	81-110	N/A	2024- Understory of stand is variable throughout the stand with some areas being fully stocked and some areas having low stocked understory. 2020 - Thinned Fall Winter 2019/2020 Power Line Pine. Lots of size classes, white pine coming in underneath. Some red pine is reaching maturity.																																																		
<table border="1"> <thead> <tr> <th>Canopy Species</th> <th>% Cover</th> <th>Size Class</th> <th>DBH</th> <th>Age</th> </tr> </thead> <tbody> <tr> <td>Red Oak</td> <td>10</td> <td>Log/XLog</td> <td>14</td> <td></td> </tr> <tr> <td>White Oak</td> <td>10</td> <td>Log/XLog</td> <td>13</td> <td></td> </tr> <tr> <td>Red Pine</td> <td>45</td> <td>Log/Pole</td> <td>12</td> <td>85</td> </tr> <tr> <td>White Pine</td> <td>35</td> <td>Log/Pole</td> <td>12</td> <td></td> </tr> </tbody> </table>		Canopy Species	% Cover	Size Class	DBH	Age		Red Oak	10	Log/XLog	14		White Oak	10	Log/XLog	13		Red Pine	45	Log/Pole	12	85	White Pine	35	Log/Pole	12		<table border="1"> <thead> <tr> <th>Sub-Canopy Species</th> <th>Density</th> <th>Avg. Height</th> <th>Size</th> </tr> </thead> <tbody> <tr> <td>Red Maple</td> <td>Low</td> <td>Variable</td> <td>Sapling</td> </tr> <tr> <td>White Pine</td> <td>Medium</td> <td>Variable</td> <td>Sapling</td> </tr> <tr> <td>Red Pine</td> <td>Low</td> <td>Variable</td> <td>Sapling</td> </tr> <tr> <td>Red Oak</td> <td>Low</td> <td>Variable</td> <td>Sapling</td> </tr> <tr> <td>White Oak</td> <td>Low</td> <td>Variable</td> <td>Sapling</td> </tr> <tr> <td>Bigtooth Aspen</td> <td>Medium</td> <td>Variable</td> <td>Sapling</td> </tr> </tbody> </table>		Sub-Canopy Species	Density	Avg. Height	Size	Red Maple	Low	Variable	Sapling	White Pine	Medium	Variable	Sapling	Red Pine	Low	Variable	Sapling	Red Oak	Low	Variable	Sapling	White Oak	Low	Variable	Sapling	Bigtooth Aspen	Medium	Variable	Sapling
Canopy Species	% Cover	Size Class	DBH	Age																																																					
Red Oak	10	Log/XLog	14																																																						
White Oak	10	Log/XLog	13																																																						
Red Pine	45	Log/Pole	12	85																																																					
White Pine	35	Log/Pole	12																																																						
Sub-Canopy Species	Density	Avg. Height	Size																																																						
Red Maple	Low	Variable	Sapling																																																						
White Pine	Medium	Variable	Sapling																																																						
Red Pine	Low	Variable	Sapling																																																						
Red Oak	Low	Variable	Sapling																																																						
White Oak	Low	Variable	Sapling																																																						
Bigtooth Aspen	Medium	Variable	Sapling																																																						



Stand	Level 4 Cover Type	Size Density	Acres	Stand Age	BA Range	Managed Site	General Comments
<b>65</b>	42200 - Natural White Pine	Sawtimber Well	44.9	85	111-140	N/A	2024 - Variable basal areas from 150 down to 20. Stand has fully stocked A3 under it 2010 - Harvest was completed under contract Boardman River Mix, 61-081-06-01, completed March 2010. Removed all maple, aspen and jack pine. Stocking is variable.
<b>Canopy Species</b>		<b>% Cover</b>	<b>Size Class</b>	<b>DBH</b>	<b>Age</b>	<b>Sub-Canopy Species</b>	
White Pine		75	Log/XLog	14	85	Red Maple	
Red Oak		5	Log	14		Bigtooth Aspen	
Red Pine		20	Log/Pole	12		Witch Hazel	
						White Pine	
						Density	
						Avg. Height	
						Size	
<b>66</b>	42290 - Natural Mixed Pine	Poletimber Medium	11.6	72	51-80	N/A	2024 - Small stand cut with adjacent stand in future
<b>Canopy Species</b>		<b>% Cover</b>	<b>Size Class</b>	<b>DBH</b>	<b>Age</b>	<b>Sub-Canopy Species</b>	
White Pine		20	Log/Pole	10		White Pine	
Red Pine		20	Log/Pole	10		Density	
Quaking Aspen		10	Pole	6		Avg. Height	
Jack Pine		50	Pole	8	72	Size	
<b>68</b>	4130 - Aspen	Poletimber Well	7.8	36	1-50	N/A	2024 - Stand transitioned to pole stand this year of entry. 1988 - Stand was final harvested under contract Taylor Creek Sale (61-043-86).
<b>Canopy Species</b>		<b>% Cover</b>	<b>Size Class</b>	<b>DBH</b>	<b>Age</b>	<b>Sub-Canopy Species</b>	
Bigtooth Aspen		80	Pole/Sapling	6	36		
Red Maple		10	Pole/Sapling	6			
Paper Birch		10	Pole/Sapling	6			
<b>69</b>	6118 - Lowland Deciduous with Cedar	Poletimber Medium	25.5	84	1-50	N/A	2024 - Stand has a drain running through it and was flooded during field visit. Ash is all dead in stand and aspen on edge of stand is poor quality.
<b>Canopy Species</b>		<b>% Cover</b>	<b>Size Class</b>	<b>DBH</b>	<b>Age</b>	<b>Sub-Canopy Species</b>	
Paper Birch		5	Pole	7		Tag Alder	
Northern White Cedar		20	Pole	8		Density	
Black Ash		55	Pole	6	84	Avg. Height	
Quaking Aspen		10	Pole	8		Size	
Red Maple		10	Pole	7			
<b>71</b>	4139 - Aspen, Mixed Deciduous	Sawtimber Well	9.1	50	81-110	N/A	2024 - Stand is fully stocked aspen stand with mix of several other species. Stand could be harvested this YOY or held till next one with any noticeable issues.
<b>Canopy Species</b>		<b>% Cover</b>	<b>Size Class</b>	<b>DBH</b>	<b>Age</b>	<b>Sub-Canopy Species</b>	
White Pine		10	Log	12		Red Maple	
Red Maple		35	Log/Pole	10	50	Black Ash	
Paper Birch		10	Pole/Sapling	6		Density	
Black Cherry		5	Pole/Sapling	6		Avg. Height	
Bigtooth Aspen		40	Log/Pole	10	50	Size	



Stand	Level 4 Cover Type	Size Density	Acres	Stand Age	BA Range	Managed Site	General Comments
72	4130 - Aspen	Sapling Well	19.5	15	Immature	N/A	2024 - Stand is fully stocked, stand has white pine filling in under it 2009 - Part of Crofton Aspen, 61-097-06-01, completed April 2009.
<b>Canopy Species</b>		<b>% Cover</b>	<b>Size Class</b>	<b>DBH</b>	<b>Age</b>		
Bigtooth Aspen		70	Sapling	2	15		
Red Oak		5	Log	14			
Red Maple		20	Sapling	2			
White Pine		5	Log	12			
74	622 - Lowland Shrub	Nonstocked	182.5		Unspecified	No	2023 - Taylor Creek Runs through stand. Stand has seasonal flooding and some beaver damage issues.
75	4130 - Aspen	Sawtimber Well	75.0	50	81-110	N/A	2023 - Stand will need new culvert on west side to enter stand with anything heavier than a pickup truck. Stand is fully stocked aspen. Stand can be cut or held this year of entry.
<b>Canopy Species</b>		<b>% Cover</b>	<b>Size Class</b>	<b>DBH</b>	<b>Age</b>		
Bigtooth Aspen		80	Log/Pole	10	50		
Red Maple		10	Log/Pole	10			
White Pine		10	Pole	6			
<b>Sub-Canopy Species</b>			<b>Density</b>	<b>Avg. Height</b>	<b>Size</b>		
White Pine			Low	10 - 20 feet	Sapling		
76	4130 - Aspen	Poletimber Well	20.7	26	1-50	N/A	2023 - Stand is transitioning into pole stand this year of entry. 1998 - Stand was final harvested under contract Taylor Creek Aspen (61-151-96) completed
<b>Canopy Species</b>		<b>% Cover</b>	<b>Size Class</b>	<b>DBH</b>	<b>Age</b>		
Red Oak		5	Log	14			
White Pine		5	Log	12			
Bigtooth Aspen		90	Pole/Sapling	5	26		
<b>Sub-Canopy Species</b>			<b>Density</b>	<b>Avg. Height</b>	<b>Size</b>		
White Pine			Low	< 5 feet	Sapling		
78	42200 - Natural White Pine	Sawtimber Well	8.7	99	81-110	N/A	2024 - Stand understory is slowly starting to fill in at this time. 2020 - Thinned Fall Winter 2019/2020 Power Line Pine.
<b>Canopy Species</b>		<b>% Cover</b>	<b>Size Class</b>	<b>DBH</b>	<b>Age</b>		
White Pine		75	Log	14	99		
Red Pine		25	Log	14			
<b>Sub-Canopy Species</b>			<b>Density</b>	<b>Avg. Height</b>	<b>Size</b>		
Red Maple			Low	>20 feet	Sapling		
White Pine			Low	10 - 20 feet	Sapling		
79	4130 - Aspen	Sapling Well	18.9	26	Immature	N/A	2024 - Stand is starting to get a few poles in it. Should transition into pole stand next year of entry. 1998 - Stand was final harvested under contract Taylor Creek Aspen (61-151-96) completed
<b>Canopy Species</b>		<b>% Cover</b>	<b>Size Class</b>	<b>DBH</b>	<b>Age</b>		
Bigtooth Aspen		80	Sapling/Pole	3	26		
White Pine		15	Sapling	2			
Red Oak		5	Log	14			
80	4191 - Mixed Upland Deciduous with Conifer	Sawtimber Well	6.8	73	51-80	N/A	2024 - Some portions of stand that are more open have fully stocked aspen regeneration. 2020 - Thinned Fall Winter 2019/2020 Power Line Pine. Hilly terrain.
<b>Canopy Species</b>		<b>% Cover</b>	<b>Size Class</b>	<b>DBH</b>	<b>Age</b>		
White Pine		15	Log/Pole	10			
White Oak		5	Log/Pole	12			
Red Oak		40	Log	12	73		
Red Maple		15	Pole	8			
Red Pine		25	Log/Pole	10			
<b>Sub-Canopy Species</b>			<b>Density</b>	<b>Avg. Height</b>	<b>Size</b>		
White Pine			Medium	Variable	Sapling		
Bigtooth Aspen			Medium	Variable	Sapling		



Stand	Level 4 Cover Type	Size Density	Acres	Stand Age	BA Range	Managed Site	General Comments
-------	--------------------	--------------	-------	-----------	----------	--------------	------------------

**81**      310 - Herbaceous Openland      Nonstocked      15.2           Unspecified           2024 - Powerline Transition lines run throughout stand.

**82**      42200 - Natural White Pine      Sawtimber Well      18.1      85      111-140      N/A      2024 - Hold stand and thin stand when stand 75 is harvested. Not worth the culvert to harvest this stand at this time.

Canopy Species	% Cover	Size Class	DBH	Age	Sub-Canopy Species	Density	Avg. Height	Size
Quaking Aspen	5	Pole	8		Red Maple	High	Variable	Sapling
White Pine	85	Log	14	85				
Red Pine	5	Log	12					
Red Maple	5	Pole	8					

**84**      4311 - Pine, Aspen Mix      Sawtimber Well      47.9      72      111-140      N/A      2024 - Stand has nice pocket of red pine in it. White pine varies from extra larger tree to pole size. Several aspen clones throughout stand

Canopy Species	% Cover	Size Class	DBH	Age	Sub-Canopy Species	Density	Avg. Height	Size
Red Maple	16	Log/Pole	10		White Pine	Low	Variable	Sapling
Red Oak	9	Log	14					
Bigtooth Aspen	20	Log/Pole	12					
White Pine	30	Pole	8	72				
Red Pine	25	Log	12					

**87**      4130 - Aspen      Sapling Well      9.7      15      Immature      N/A      2024 - Some beaver activity in stand. Stand is fully stocked pole stand at this time.  
2009 - Part of Crofton Aspen, 61-097-06-01, completed April 2009.

Canopy Species	% Cover	Size Class	DBH	Age
Red Maple	20	Sapling	1	
Red Oak	5	Log	14	
Bigtooth Aspen	75	Sapling	1	15

**88**      6118 - Lowland Deciduous with Cedar      Poletimber Well      4.7      81      Unspecified      N/A      2024 - Small spring fed drainage in stand. BMP guidelines won't allow harvest of stand. Most of aspen has died out of stand, allowing cedar to slowly start to take over in dominate overstory.

Canopy Species	% Cover	Size Class	DBH	Age	Sub-Canopy Species	Density	Avg. Height	Size
Quaking Aspen	35	Pole/Log	10	81	Aspen (spp.)	Low	< 5 feet	Sapling
Northern White Cedar	30	Pole	6					
Paper Birch	15	Pole	8					
Balsam Fir	5	Pole	6					
Red Maple	15	Pole/Log	10					

**89**      4133 - Aspen, Mixed Pine      Poletimber Well      52.0      52      51-80      N/A      2024 - Rolling hills throughout stand. Stand has super canopy oak over aspen. Stand can be held or cut this year of entry.

Canopy Species	% Cover	Size Class	DBH	Age	Sub-Canopy Species	Density	Avg. Height	Size
Red Maple	10	Pole/Log	9		White Pine	Medium	Variable	Sapling
Bigtooth Aspen	50	Pole/Log	9	52				
White Pine	15	Log	12	75				
Red Pine	10	Log	12					
Red Oak	15	Log/Pole	12					



Stand	Level 4 Cover Type	Size Density	Acres	Stand Age	BA Range	Managed Site	General Comments																																													
90	42290 - Natural Mixed Pine	Sawtimber Well	40.7	80	51-80	N/A	2024 - Stand understory is slowly starting to fill in at this time. 2020 - Thinned Fall Winter 2019/2020 Power Line Pine. E																																													
<table border="1"> <thead> <tr> <th>Canopy Species</th> <th>% Cover</th> <th>Size Class</th> <th>DBH</th> <th>Age</th> </tr> </thead> <tbody> <tr> <td>White Oak</td> <td>8</td> <td>Log</td> <td>14</td> <td></td> </tr> <tr> <td>Red Oak</td> <td>8</td> <td>Log</td> <td>12</td> <td></td> </tr> <tr> <td>White Pine</td> <td>49</td> <td>Log</td> <td>12</td> <td>80</td> </tr> <tr> <td>Red Pine</td> <td>35</td> <td>Log</td> <td>12</td> <td></td> </tr> </tbody> </table>		Canopy Species	% Cover	Size Class	DBH	Age	White Oak	8	Log	14		Red Oak	8	Log	12		White Pine	49	Log	12	80	Red Pine	35	Log	12		<table border="1"> <thead> <tr> <th>Sub-Canopy Species</th> <th>Density</th> <th>Avg. Height</th> <th>Size</th> </tr> </thead> <tbody> <tr> <td>Red Oak</td> <td>Low</td> <td>Variable</td> <td>Sapling</td> </tr> <tr> <td>White Pine</td> <td>Medium</td> <td>Variable</td> <td>Sapling</td> </tr> <tr> <td>White Oak</td> <td>Low</td> <td>Variable</td> <td>Sapling</td> </tr> <tr> <td>Bigtooth Aspen</td> <td>Medium</td> <td>Variable</td> <td>Sapling</td> </tr> <tr> <td>Red Pine</td> <td>Low</td> <td>Variable</td> <td>Sapling</td> </tr> </tbody> </table>		Sub-Canopy Species	Density	Avg. Height	Size	Red Oak	Low	Variable	Sapling	White Pine	Medium	Variable	Sapling	White Oak	Low	Variable	Sapling	Bigtooth Aspen	Medium	Variable	Sapling	Red Pine	Low	Variable	Sapling
Canopy Species	% Cover	Size Class	DBH	Age																																																
White Oak	8	Log	14																																																	
Red Oak	8	Log	12																																																	
White Pine	49	Log	12	80																																																
Red Pine	35	Log	12																																																	
Sub-Canopy Species	Density	Avg. Height	Size																																																	
Red Oak	Low	Variable	Sapling																																																	
White Pine	Medium	Variable	Sapling																																																	
White Oak	Low	Variable	Sapling																																																	
Bigtooth Aspen	Medium	Variable	Sapling																																																	
Red Pine	Low	Variable	Sapling																																																	
91	622 - Lowland Shrub	Nonstocked	20.0		Unspecified	No																																														
92	4133 - Aspen, Mixed Pine	Poletimber Well	3.7	50	81-110	N/A	2024 - stand is not big enough for the amount of crane mats it will take to avoid serious wetland damages during harvest.																																													
<table border="1"> <thead> <tr> <th>Canopy Species</th> <th>% Cover</th> <th>Size Class</th> <th>DBH</th> <th>Age</th> </tr> </thead> <tbody> <tr> <td>Red Maple</td> <td>10</td> <td>Pole</td> <td>8</td> <td></td> </tr> <tr> <td>White Pine</td> <td>25</td> <td>Log</td> <td>12</td> <td></td> </tr> <tr> <td>Quaking Aspen</td> <td>60</td> <td>Pole</td> <td>6</td> <td>50</td> </tr> <tr> <td>Balsam Fir</td> <td>5</td> <td>Pole</td> <td>6</td> <td></td> </tr> </tbody> </table>		Canopy Species	% Cover	Size Class	DBH	Age	Red Maple	10	Pole	8		White Pine	25	Log	12		Quaking Aspen	60	Pole	6	50	Balsam Fir	5	Pole	6		<table border="1"> <thead> <tr> <th>Sub-Canopy Species</th> <th>Density</th> <th>Avg. Height</th> <th>Size</th> </tr> </thead> <tbody> <tr> <td>Balsam Fir</td> <td>Low</td> <td>Variable</td> <td>Sapling</td> </tr> </tbody> </table>		Sub-Canopy Species	Density	Avg. Height	Size	Balsam Fir	Low	Variable	Sapling																
Canopy Species	% Cover	Size Class	DBH	Age																																																
Red Maple	10	Pole	8																																																	
White Pine	25	Log	12																																																	
Quaking Aspen	60	Pole	6	50																																																
Balsam Fir	5	Pole	6																																																	
Sub-Canopy Species	Density	Avg. Height	Size																																																	
Balsam Fir	Low	Variable	Sapling																																																	
93	6132 - Mixed Lowland Forest with Cedar	Poletimber Medium	110.1	99	Unspecified	N/A	2024 - Stand was extremely wet with warm winter conditions. Ash all died out of stand. Aspen poor quality.																																													
<table border="1"> <thead> <tr> <th>Canopy Species</th> <th>% Cover</th> <th>Size Class</th> <th>DBH</th> <th>Age</th> </tr> </thead> <tbody> <tr> <td>Black Spruce</td> <td>10</td> <td>Pole</td> <td>6</td> <td></td> </tr> <tr> <td>Quaking Aspen</td> <td>10</td> <td>Pole</td> <td>6</td> <td></td> </tr> <tr> <td>Paper Birch</td> <td>20</td> <td>Pole</td> <td>6</td> <td></td> </tr> <tr> <td>Balsam Fir</td> <td>10</td> <td>Pole</td> <td>6</td> <td></td> </tr> <tr> <td>Northern White Cedar</td> <td>30</td> <td>Pole</td> <td>6</td> <td>99</td> </tr> <tr> <td>Red Maple</td> <td>15</td> <td>Pole</td> <td>6</td> <td></td> </tr> <tr> <td>Tamarack</td> <td>5</td> <td>Pole</td> <td>6</td> <td></td> </tr> </tbody> </table>		Canopy Species	% Cover	Size Class	DBH	Age	Black Spruce	10	Pole	6		Quaking Aspen	10	Pole	6		Paper Birch	20	Pole	6		Balsam Fir	10	Pole	6		Northern White Cedar	30	Pole	6	99	Red Maple	15	Pole	6		Tamarack	5	Pole	6		<table border="1"> <thead> <tr> <th>Sub-Canopy Species</th> <th>Density</th> <th>Avg. Height</th> <th>Size</th> </tr> </thead> <tbody> <tr> <td>Tag Alder</td> <td>High</td> <td>Variable</td> <td>Tall Shrub</td> </tr> </tbody> </table>		Sub-Canopy Species	Density	Avg. Height	Size	Tag Alder	High	Variable	Tall Shrub	
Canopy Species	% Cover	Size Class	DBH	Age																																																
Black Spruce	10	Pole	6																																																	
Quaking Aspen	10	Pole	6																																																	
Paper Birch	20	Pole	6																																																	
Balsam Fir	10	Pole	6																																																	
Northern White Cedar	30	Pole	6	99																																																
Red Maple	15	Pole	6																																																	
Tamarack	5	Pole	6																																																	
Sub-Canopy Species	Density	Avg. Height	Size																																																	
Tag Alder	High	Variable	Tall Shrub																																																	
97	6129 - Mixed Coniferous Lowland Forest	Poletimber Medium	62.7	99	51-80	N/A	2024 - Stand extremely wet with warm winter conditions. Stand does have some lowland shrub areas scattered throughout it but seems too mostly forested.																																													
<table border="1"> <thead> <tr> <th>Canopy Species</th> <th>% Cover</th> <th>Size Class</th> <th>DBH</th> <th>Age</th> </tr> </thead> <tbody> <tr> <td>Balsam Fir</td> <td>15</td> <td>Pole</td> <td>6</td> <td></td> </tr> <tr> <td>Quaking Aspen</td> <td>5</td> <td>Pole</td> <td>6</td> <td></td> </tr> <tr> <td>Northern White Cedar</td> <td>45</td> <td>Pole</td> <td>6</td> <td>99</td> </tr> <tr> <td>Paper Birch</td> <td>5</td> <td>Pole</td> <td>6</td> <td></td> </tr> <tr> <td>Black Spruce</td> <td>25</td> <td>Pole</td> <td>6</td> <td></td> </tr> <tr> <td>Red Maple</td> <td>5</td> <td>Pole</td> <td>6</td> <td></td> </tr> </tbody> </table>		Canopy Species	% Cover	Size Class	DBH	Age	Balsam Fir	15	Pole	6		Quaking Aspen	5	Pole	6		Northern White Cedar	45	Pole	6	99	Paper Birch	5	Pole	6		Black Spruce	25	Pole	6		Red Maple	5	Pole	6		<table border="1"> <thead> <tr> <th>Sub-Canopy Species</th> <th>Density</th> <th>Avg. Height</th> <th>Size</th> </tr> </thead> <tbody> <tr> <td>Tag Alder</td> <td>Medium</td> <td>Variable</td> <td>Tall Shrub</td> </tr> </tbody> </table>		Sub-Canopy Species	Density	Avg. Height	Size	Tag Alder	Medium	Variable	Tall Shrub						
Canopy Species	% Cover	Size Class	DBH	Age																																																
Balsam Fir	15	Pole	6																																																	
Quaking Aspen	5	Pole	6																																																	
Northern White Cedar	45	Pole	6	99																																																
Paper Birch	5	Pole	6																																																	
Black Spruce	25	Pole	6																																																	
Red Maple	5	Pole	6																																																	
Sub-Canopy Species	Density	Avg. Height	Size																																																	
Tag Alder	Medium	Variable	Tall Shrub																																																	
98	4130 - Aspen	Sapling Well	25.9	15	Immature	N/A	2024 - Fully stocked aspen stand with some white pine in understory. 2013 - Part of Crofton Aspen, 61-097-06-01, completed April 2009. Dense regeneration about 10' tall. Scattered oak.																																													
<table border="1"> <thead> <tr> <th>Canopy Species</th> <th>% Cover</th> <th>Size Class</th> <th>DBH</th> <th>Age</th> </tr> </thead> <tbody> <tr> <td>Bigtooth Aspen</td> <td>90</td> <td>Sapling</td> <td>2</td> <td>15</td> </tr> <tr> <td>White Pine</td> <td>10</td> <td>Sapling</td> <td>1</td> <td></td> </tr> </tbody> </table>		Canopy Species	% Cover	Size Class	DBH	Age	Bigtooth Aspen	90	Sapling	2	15	White Pine	10	Sapling	1																																					
Canopy Species	% Cover	Size Class	DBH	Age																																																
Bigtooth Aspen	90	Sapling	2	15																																																
White Pine	10	Sapling	1																																																	



Stand	Level 4 Cover Type	Size Density	Acres	Stand Age	BA Range	Managed Site	General Comments
100	122 - Road/Parking Lot	Nonstocked	3.8		Unspecified		2024 - US-131 corridor.

101	4130 - Aspen	Sawtimber Well	4.8	51	51-80	N/A	2024 - Stand is set to be disposed of by state.
-----	--------------	----------------	-----	----	-------	-----	-------------------------------------------------

Canopy Species	% Cover	Size Class	DBH	Age	Sub-Canopy Species	Density	Avg. Height	Size
White Pine	10	Log/Pole	11		White Pine	Medium	Variable	Sapling
Red Maple	10	Log/Pole	12					
Bigtooth Aspen	78	Log/Pole	11	51				
Red Pine	2	Pole	8					

102	42200 - Natural White Pine	Sawtimber Medium	26.7	56	51-80	N/A	2024 - Stand has fully stocked aspen stand under pine across most of stand. 2009 - Aspen removed as part of Crofton Aspen, 61-097-06-01, completed April 2009.
-----	----------------------------	------------------	------	----	-------	-----	----------------------------------------------------------------------------------------------------------------------------------------------------------------

Canopy Species	% Cover	Size Class	DBH	Age	Sub-Canopy Species	Density	Avg. Height	Size
Red Oak	5	Log	12		Bigtooth Aspen	High	5 - 10 feet	Sapling
White Pine	95	Log	12	56	Red Maple	Medium	5 - 10 feet	Sapling