

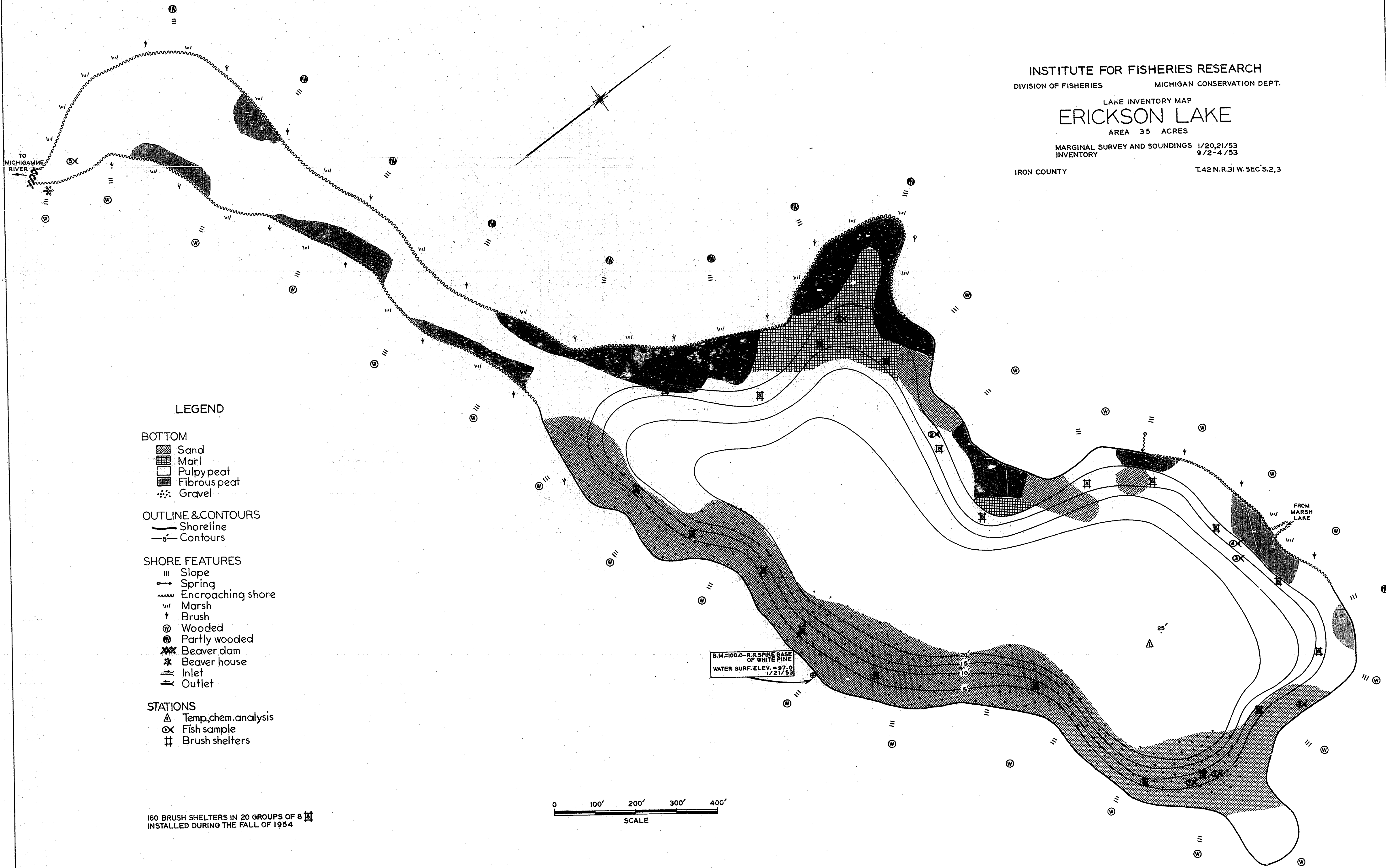
INSTITUTE FOR FISHERIES RESEARCH  
 DIVISION OF FISHERIES MICHIGAN CONSERVATION DEPT.

LAKE INVENTORY MAP  
**ERICKSON LAKE**  
 AREA 35 ACRES

MARGINAL SURVEY AND SOUNDINGS 1/20,21/53  
 INVENTORY 9/2-4/53

IRON COUNTY

T.42 N. R.31 W. SEC'S.2,3



**LEGEND**

**BOTTOM**

- Sand
- Marl
- Pulpy peat
- Fibrous peat
- Gravel

**OUTLINE & CONTOURS**

- Shoreline
- Contours

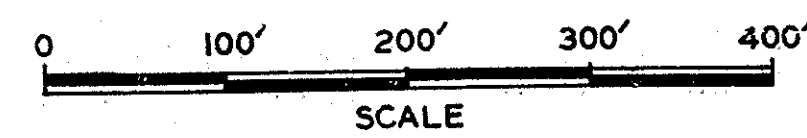
**SHORE FEATURES**

- Slope
- Spring
- Encroaching shore
- Marsh
- Brush
- Wooded
- Partly wooded
- Beaver dam
- Beaver house
- Inlet
- Outlet

**STATIONS**

- Temp. chem. analysis
- Fish sample
- Brush shelters

160 BRUSH SHELTERS IN 20 GROUPS OF 8  
 INSTALLED DURING THE FALL OF 1954



B.M. 100.0 - R.R. SPIKE BASE  
 OF WHITE PINE  
 WATER SURF. ELEV. = 97.0  
 1/21/53