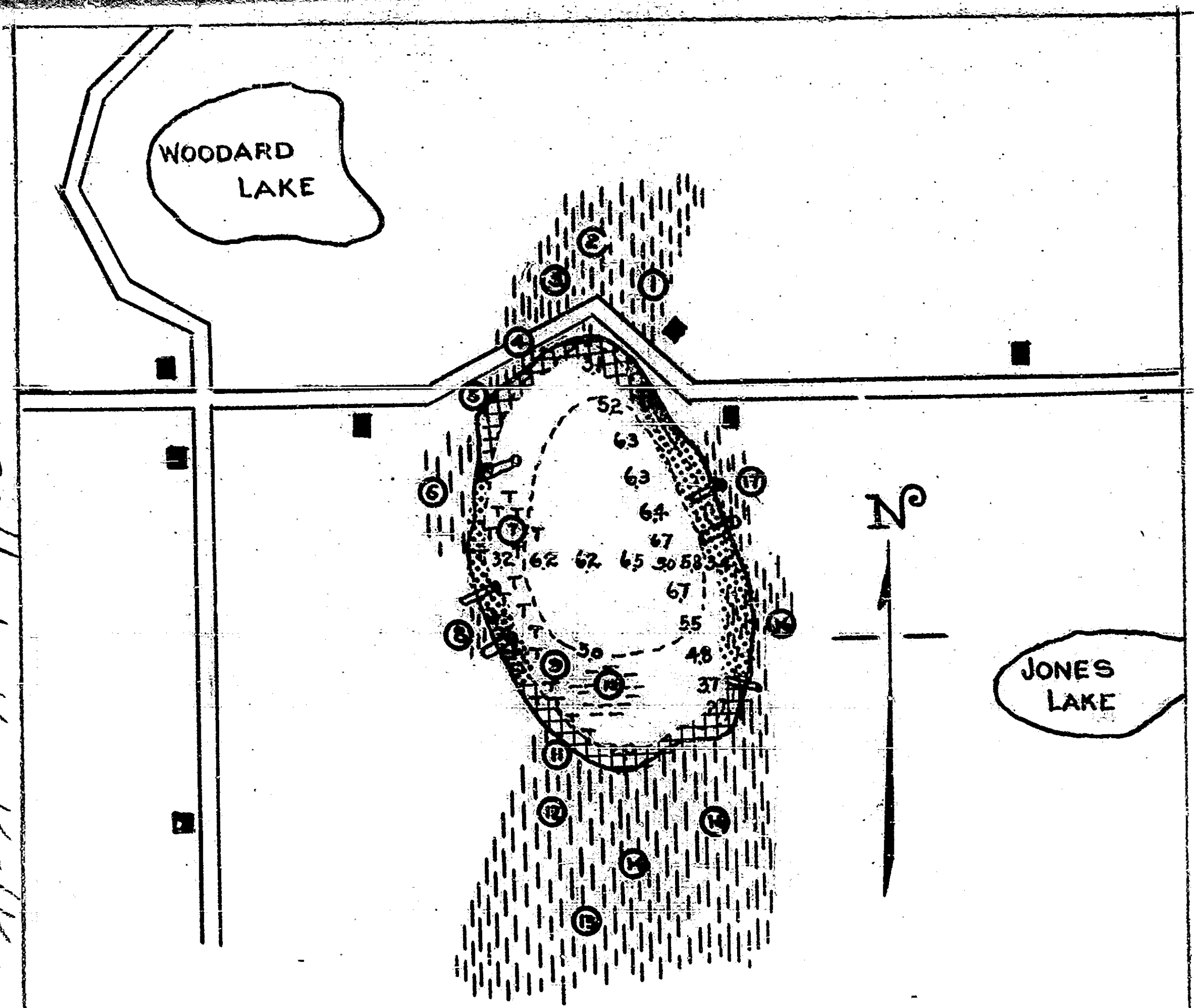


Ingersoll Lake, Kalkaska Co., T. 25 N., - R. 8 W. Sec. 13



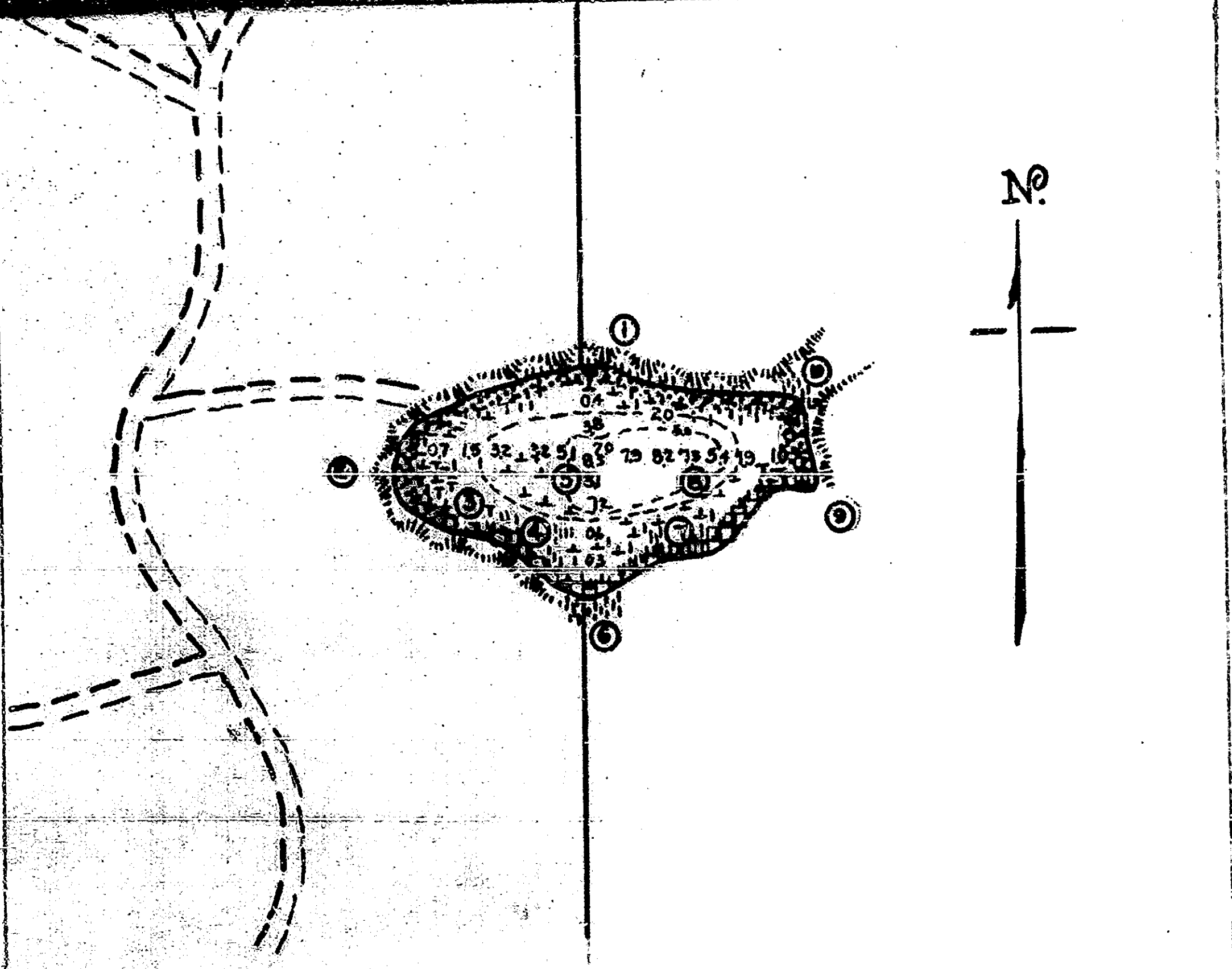
INGERSOLL LAKE
 VEGETATION, BOTTOM AND DEPTH CHART
 County Kalkaska
 Twp. Springfield-25 N.
 Range 8 W.
 Section 13
 Scale: 8 inches = 1 mile
 All depths in meters

LEGEND

Sand	Sand-Gravel	Sand-Sawdust	Fibrous Peat	Pulpy Peat
Emergent Veg.	Submergent Veg.	Floating Veg.	Bottom Veg.	
Bottom contours in meters		Vegetation beds		
Logs				

AREA 24 ACRES
 INSTITUTE FOR FISHERIES RESEARCH
 Sept. 8, 1930.

Darby Lake, Kalkaska Co., T. 27 N. - R. 8 W., Secs. 19, 20



DARBY LAKE
 VEGETATION, BOTTOM AND DEPTH CHART
 County Kalkaska
 Twp. Wilson-27 N.
 Range 6 W.
 Sections 19-20
 Scale: 8 inches = 1 mile
 All depths in meters

LEGEND

Sand	Gravel and Sand	Fibrous Peat	Pulpy Peat.
Emergent Veg.	Floating Veg.	Submergent Veg.	Bottom Veg.
Vegetation beds		Bottom contours in meters	
High, well-drained land.			
Section line			

AREA 15 ACRES
 INSTITUTE FOR FISHERIES RESEARCH
 Aug. 26, 1930