

INSTITUTE FOR FISHERIES RESEARCH

DIVISION OF FISHERIES

MICHIGAN CONSERVATION DEPT.

LAKE INVENTORY MAP

HARLOW LAKE

AREA 75 ACRES

MARQUETTE COUNTY

7/1-3/36

T.49N.,R.25,26 W.  
SEC.19,24

LEGEND

- Pulpy peat
- Sand
- Rock

VEGETATION

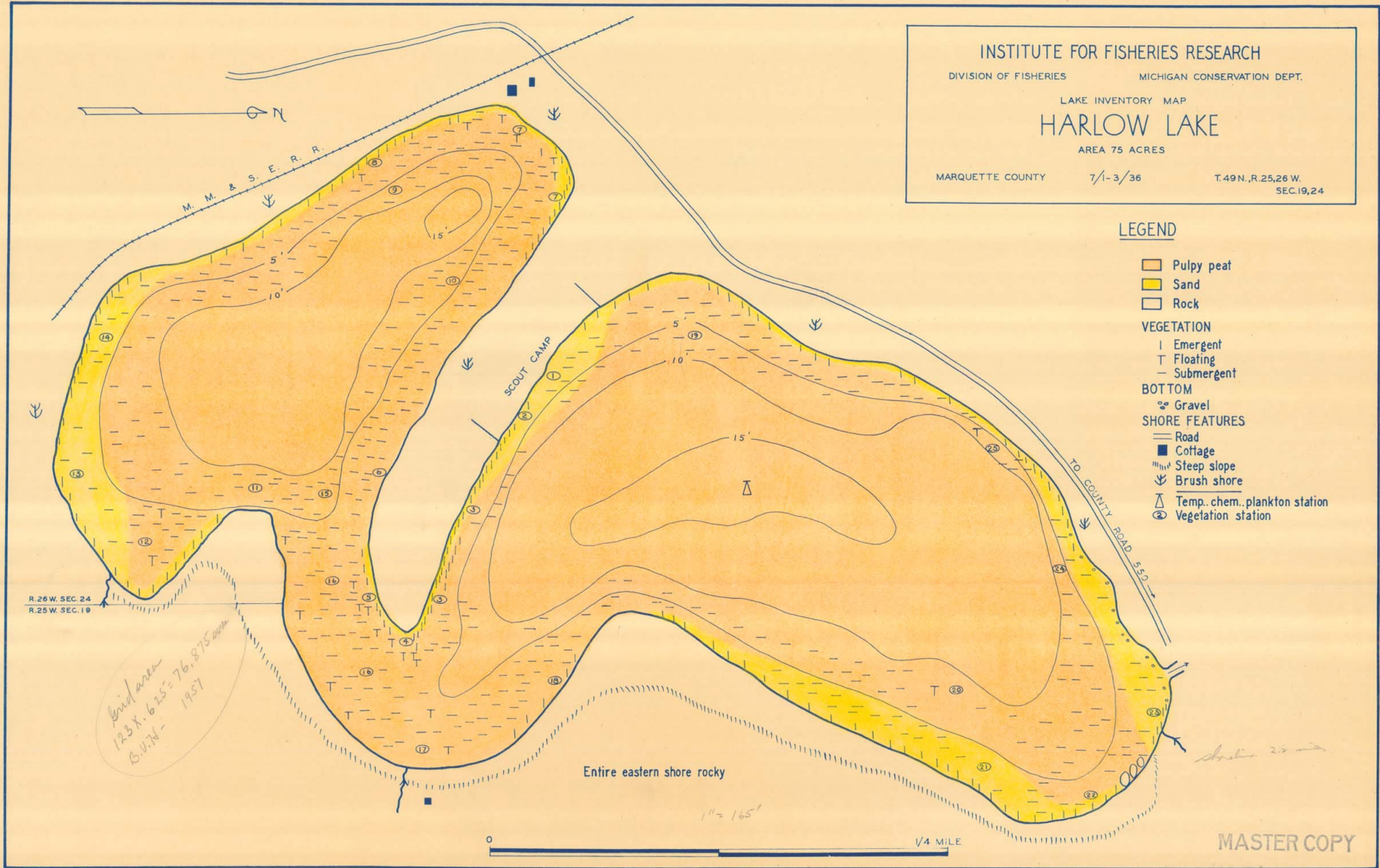
- I Emergent
- T Floating
- Submergent

BOTTOM

- ☉ Gravel

SHORE FEATURES

- Road
- Cottage
- ▒ Steep slope
- ↘ Brush shore
- △ Temp..chem..plankton station
- ⊙ Vegetation station



R.26 W. SEC.24  
R.25 W. SEC.19

*Gravel area  
123 x 625 = 76,875 sq ft  
B.V. 74 - 1957*

Entire eastern shore rocky

*1" = 165'*



MASTER COPY