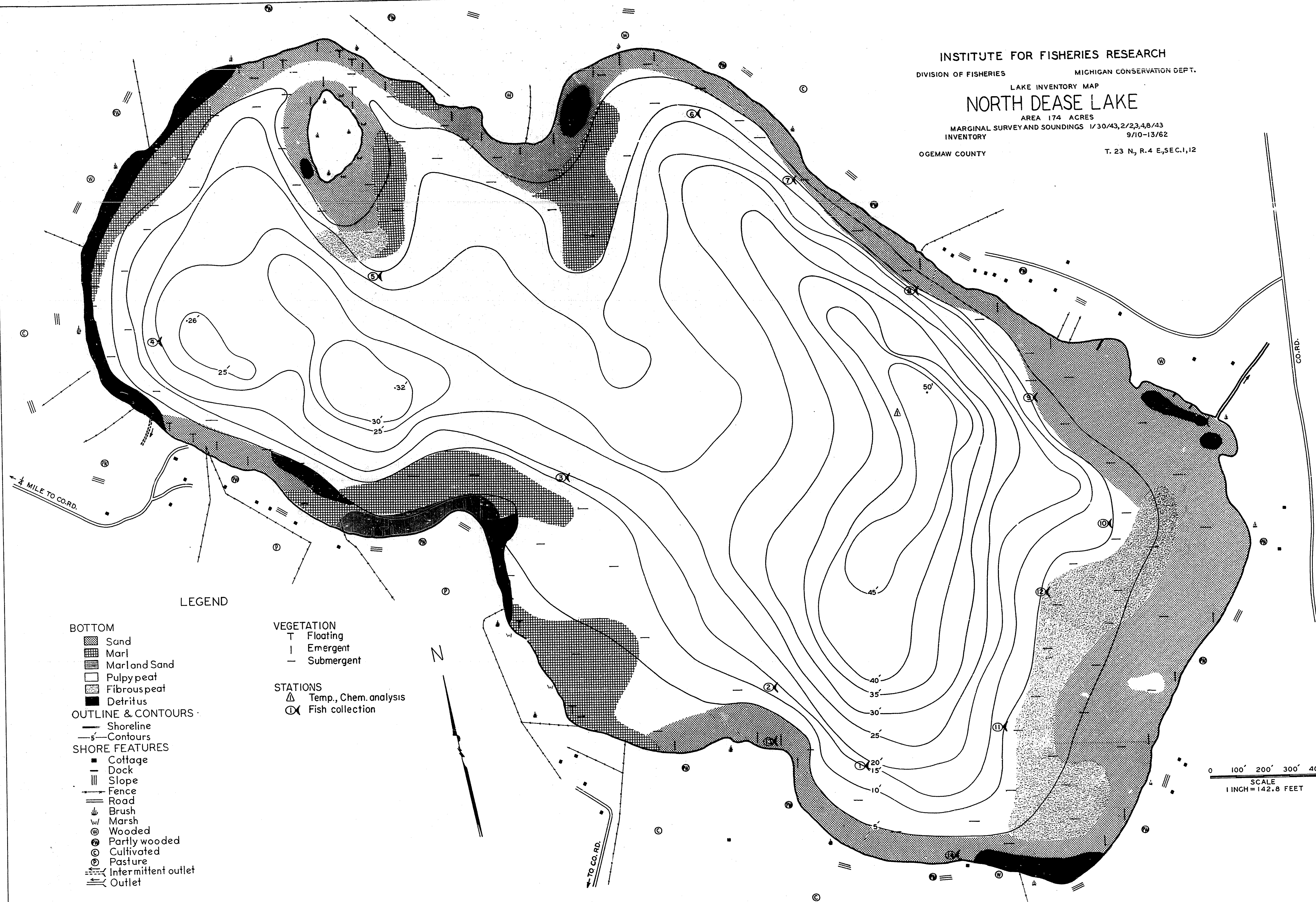


INSTITUTE FOR FISHERIES RESEARCH
 DIVISION OF FISHERIES MICHIGAN CONSERVATION DEPT.
 LAKE INVENTORY MAP
NORTH DEASE LAKE
 AREA 174 ACRES
 MARGINAL SURVEY AND SOUNDINGS 1/30/43, 2/23, 48/43
 INVENTORY 9/10-13/62
 OGEMAW COUNTY T. 23 N., R. 4 E., SEC. 1, 12



- LEGEND**
- BOTTOM**
- Sand
 - Marl
 - Marl and Sand
 - Pulpy peat
 - Fibrous peat
 - Detritus
- OUTLINE & CONTOURS**
- Shoreline
 - Contours
- SHORE FEATURES**
- Cottage
 - Dock
 - Slope
 - Fence
 - Road
 - Brush
 - Marsh
 - Wooded
 - Partly wooded
 - Cultivated
 - Pasture
 - Intermittent outlet
 - Outlet
- VEGETATION**
- Floating
 - Emergent
 - Submergent
- STATIONS**
- Temp., Chem. analysis
 - Fish collection

0 100' 200' 300' 400'
 SCALE
 1 INCH = 142.8 FEET

NORTH DEASE LAKE Ogemaw County T.23N, R.4E, Sec 1,12