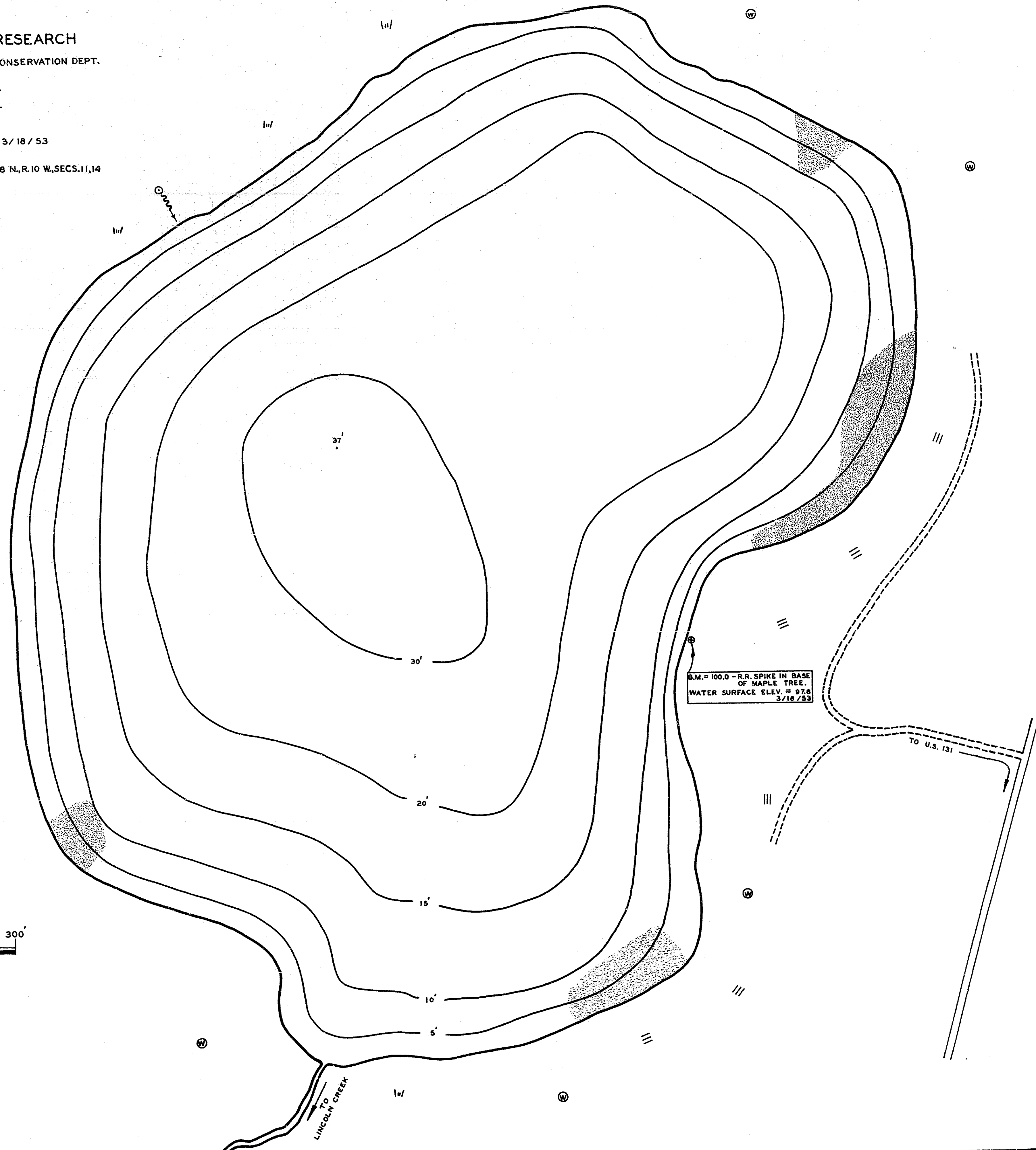


INSTITUTE FOR FISHERIES RESEARCH
 DIVISION OF FISHERIES MICHIGAN CONSERVATION DEPT.
 LAKE INVENTORY MAP
AUSTIN LAKE
 AREA 29.2 ACRES
 MARGINAL SURVEY AND SOUNDINGS 3/18/53
 OSCEOLA COUNTY T. 18 N., R. 10 W., SECS. 11, 14



- LEGEND**
- BOTTOM**
 - Pulpy peat
 - ▨ Detritus
 - OUTLINE & CONTOURS**
 - Shoreline
 - '— Contours
 - SHORE FEATURES**
 - ||| Slope
 - - - - - Unimproved road
 - ==== Improved road
 - Spring
 - ⊙ Wooded
 - w/ Marsh
 - ≡ Outlet

