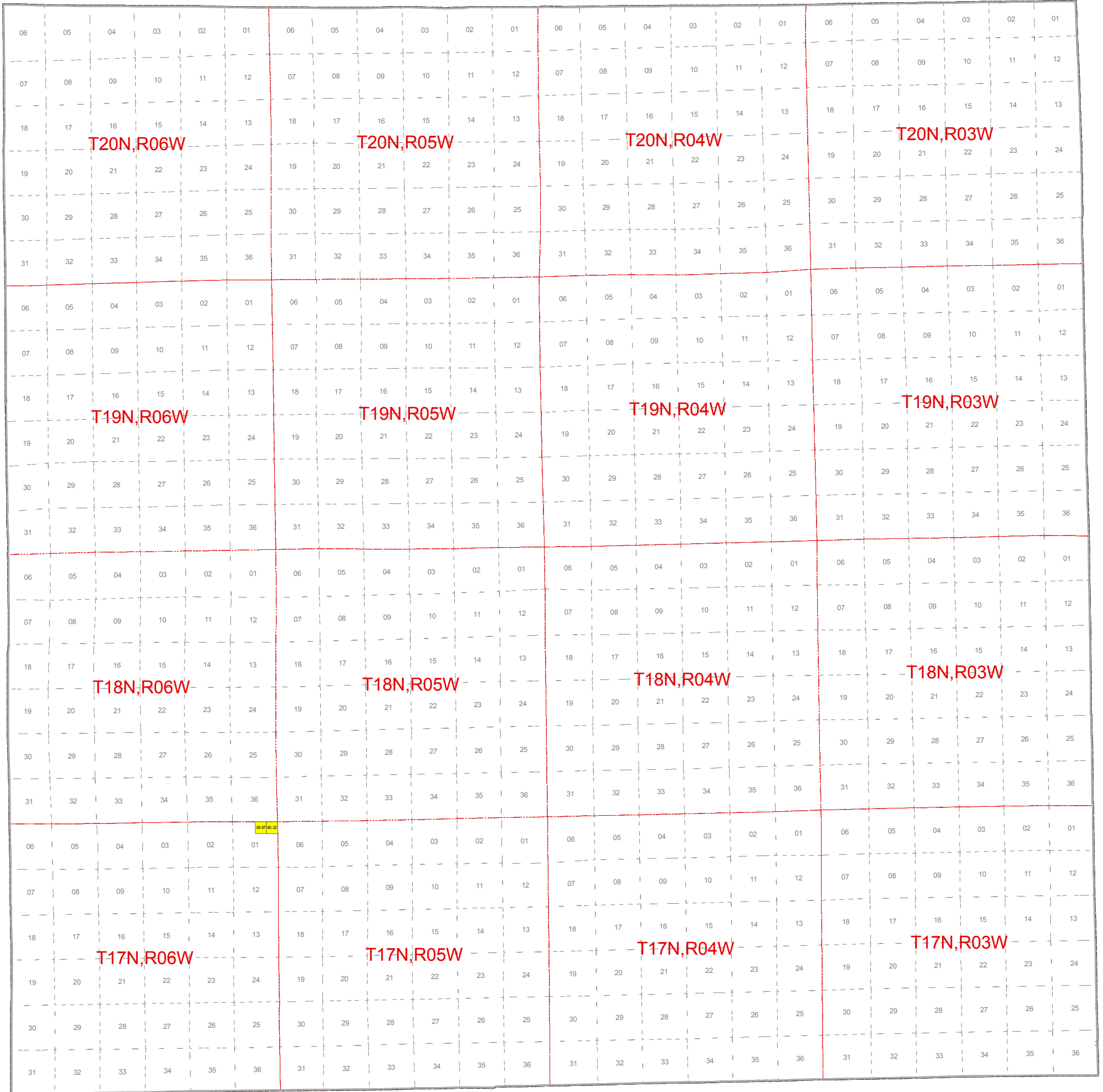


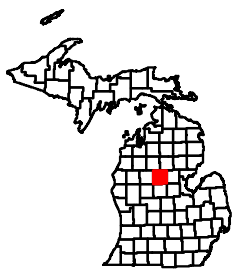


May 2011 Mineral Lease Auction Clare County



Legend

- | | | |
|--|-----------------------------------|--------------------------------|
| Antares Exploration Fund Limited Partnership | Encana Oil & Gas (USA) Inc. | Primeau Commercial, Inc. |
| Arbor Operating, L.L.C. | Griffith Land Services, Inc. | Stephen Cavender |
| BreitBurn Operating Limited Partnership | Jordan Development Company, L.L.C | Western Land Services, Inc. |
| CORE Energy, LLC | Kosco Energy Group, LLC | Westgrove Energy Holdings, LLC |
| Dennis R. Schumde, d/b/a Schumde Oil | Meridian Energy Corporation | Counties |
| Elexco Land Services, Inc. | Monitor Energy Partners, L.P. | |



= Lease Acres

Note: Some Leased blocks may contain more than one lessee.
See Spreadsheet for more detailed information.