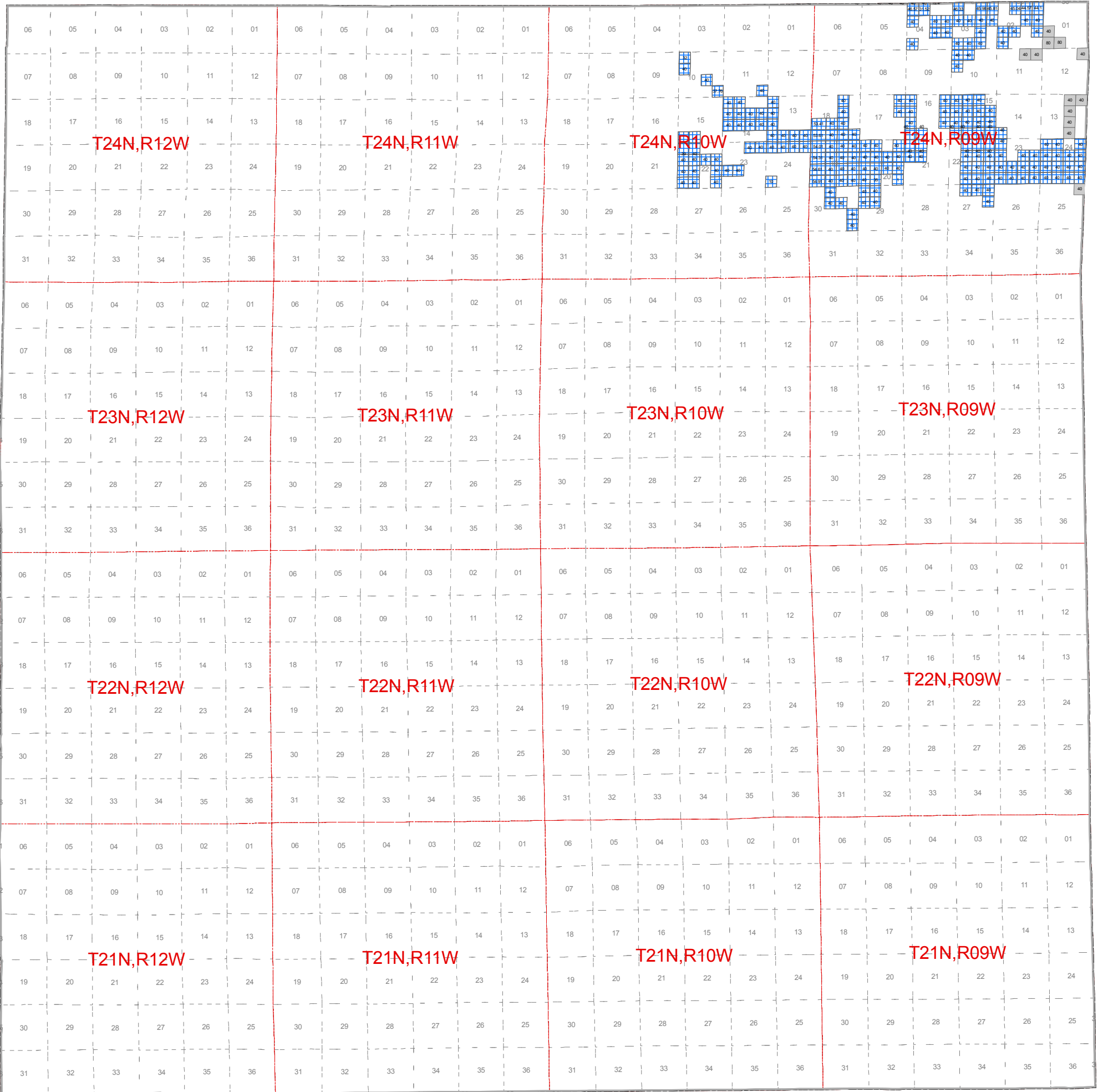




May 2011 Mineral Lease Auction Wexford County



Legend

Antares Exploration Fund Limited Partnership	Encana Oil & Gas (USA) Inc.	Primeau Commercial, Inc.
Arbor Operating, L.L.C.	Griffith Land Services, Inc.	Stephen Cavender
BreitBurn Operating Limited Partnership	Jordan Development Company, L.L.C	Western Land Services, Inc.
CORE Energy, LLC	Kosco Energy Group, LLC	Westgrove Energy Holdings, LLC
Dennis R. Schumde, d/b/a Schumde Oil	Meridian Energy Corporation	Counties
Elexco Land Services, Inc.	Monitor Energy Partners, L.P.	35 = Lease Acres



Note: Some Leased blocks may contain more than one lessee.
See Spreadsheet for more detailed information.