

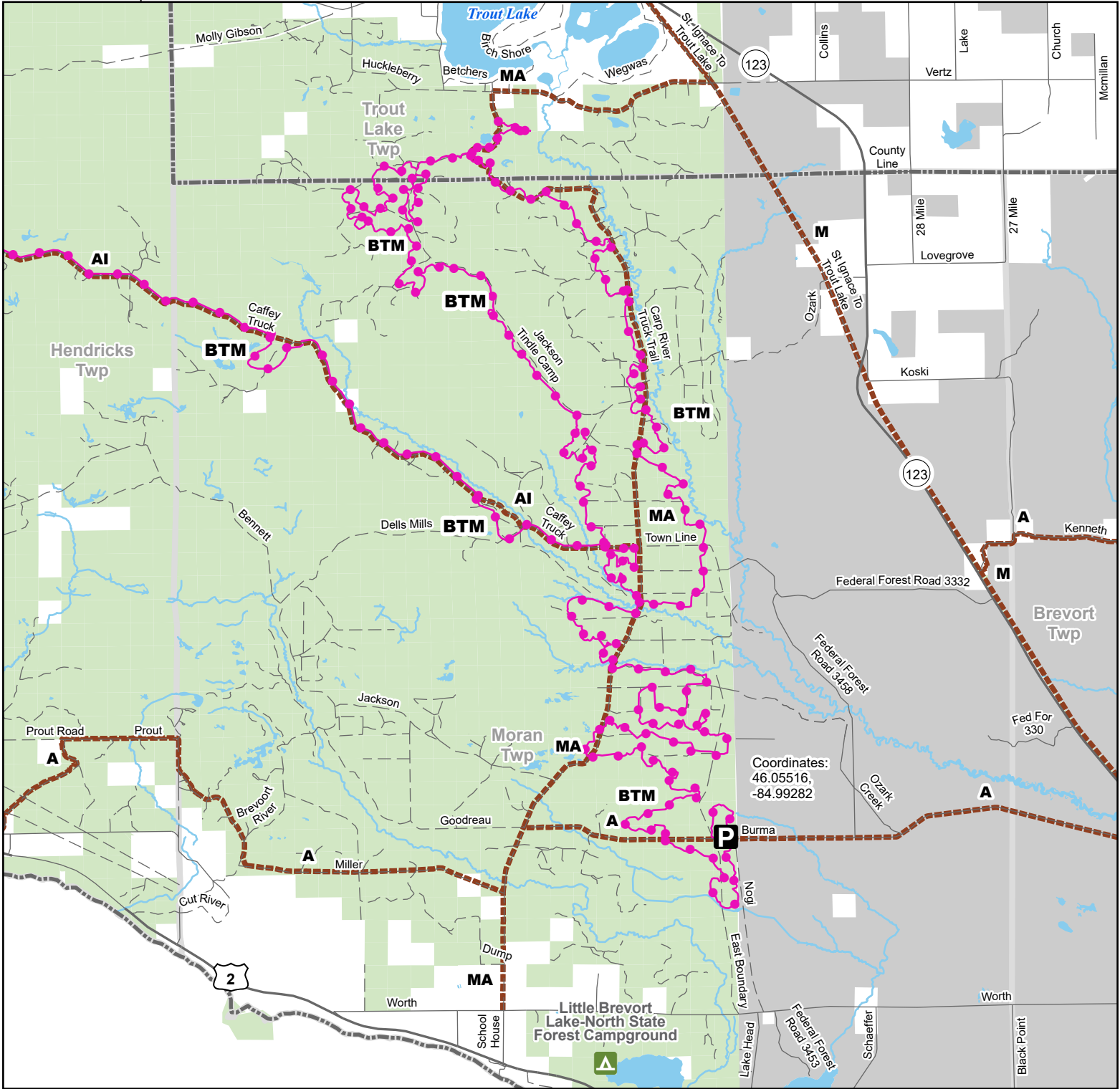


# MA Route -- Trout Lake & Moran Townships

## Mackinac & Chippewa Counties, Michigan

Description: 15 Miles

Advisory: Trails and routes have two-way traffic.  
Disclaimer: Trails shown on this map are an approximate representation of the trail system at the time of publication and may not reflect current ground conditions. Stay on signed trails only!



- P** Parking Lot
- Motorcycle Trail – Motorcycles  
Only. ORV license and trail permit required.
- ORV Route – ORVs of all sizes including off-road motorcycles. ORV license and trail permit required unless licensed by the Secretary of State.
- Highway
- Paved road
- Gravel or dirt road
- Lake and River
- State Forest Land
- Township
- County

