



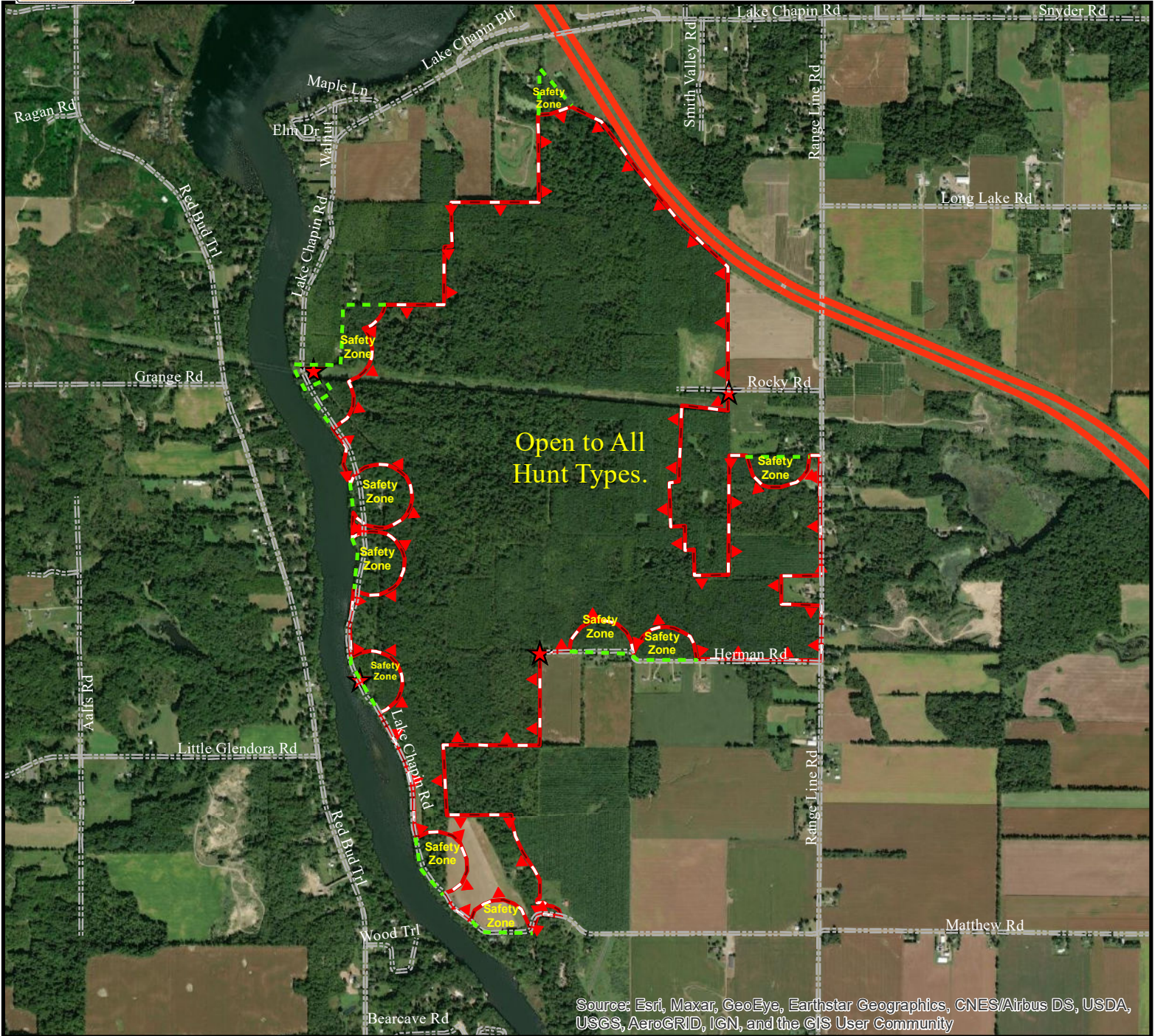
# STATE OF MICHIGAN - DEPARTMENT OF NATURAL RESOURCES HUNTING ACCESS PROGRAM (HAP)



**Landowner:** A. University  
**County:** Berrien  
**Size in Acres:** 854  
**Township, Section:** Oronoko 35,36, Buchanan 1,2  
**Farm Headquarters:** near- 11650 S. Lake Chapin Rd. Berrien Springs, MI 49103  
 12 Hunters (48 between 4 stations)

**Hunt Types Allowed:** Open to All Hunt Types.  
**Service Type:** Self-Service check-in station.  
 12 Hunters at each of 4 stations

**Hunters Allowed:** 48



Source: Esri, Maxar, GeoEye, Earthstar Geographics, CNES/Airbus DS, USDA, USGS, AeroGRID, IGN, and the GIS User Community

Property Boundary Station &/or Parking Location

0 0.1 0.2 0.4 0.6 0.8 Miles



For more information on the Hunting Access Program (HAP), more maps, or details on other areas, visit the DNR website HAP section or scan this QR-block (on the left) with your smartphone or similar device. [www.michigan.gov/hap](http://www.michigan.gov/hap)

**HUNTER SAFETY ZONES of 150 yards (450 feet or 137.2 meters) are enforced at ALL TIMES around all buildings and structures. Be aware of all property boundaries; Do not trespass onto adjacent lands.**