



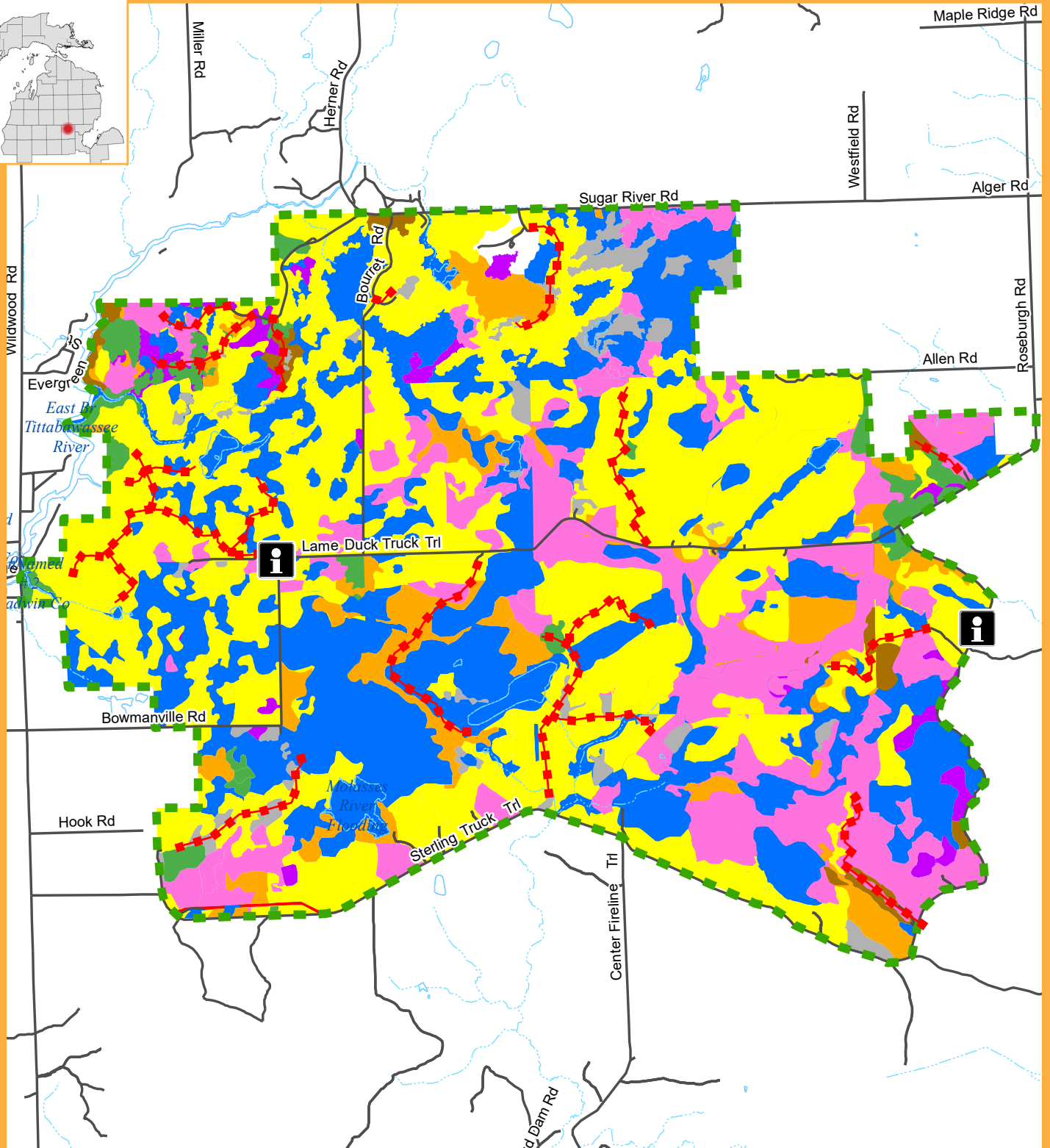
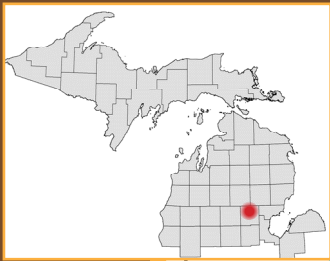
# Lame Duck Gladwin County



- |                         |                  |                        |                   |
|-------------------------|------------------|------------------------|-------------------|
| Information and Parking | Highway          | Aspen                  | Wetlands/Bogs     |
| Hunter Walking Trails   | Roads            | Oak                    | Lowland Conifers  |
| GEMS Boundary           | Streams          | Other Upland Deciduous | Lowland Deciduous |
|                         | Lakes and Rivers | Upland Conifer         | Rock/Sand/Soil    |
|                         |                  | Grass/Shrubs/Crops     |                   |



More information at [mi.gov/gems](http://mi.gov/gems)



Check out the local businesses offering great discounts to GEMS hunters who show their base license!  
Visit [mi.gov/gems](http://mi.gov/gems).