



WATERLOO WILDLIFE UNIT of the WATERLOO STATE RECREATION AREA

- General Map; Large 11x17 inches -
in Waterloo, Leoni, and Grass Lake Township, Jackson County,
and in Sylvan and Lyndon Townships, Washtenaw County

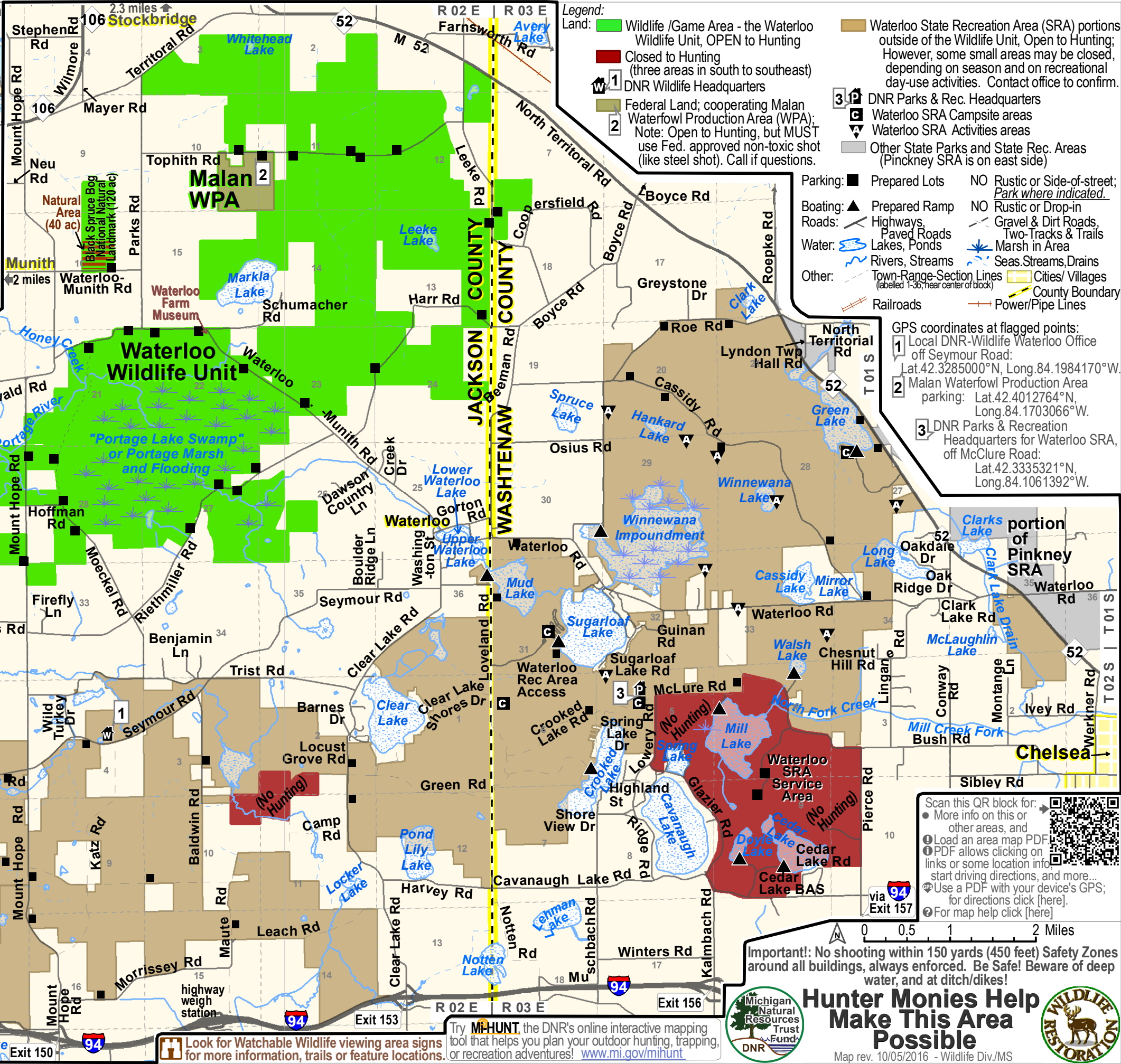
Area Headquarters: Waterloo DNR Wildlife Division Office,
13578 Seymour Road, Grass Lake, MI 49240 ; phone 517- 522-4097.

The Wildlife/Game Unit of Waterloo State Recreation Area (SRA) is described as the grouped State land in Waterloo Township (T01S, R02E), and which is north-west of the larger main SRA portion. This area is managed cooperatively for wildlife by the DNR Wildlife and Parks-&-Recreation Divisions

Contact for Waterloo SRA's standard administration questions: the Waterloo SRA Headquarters, a DNR Parks-&-Recreation Division (PRD) office, 16345 McClure Rd, Chelsea, MI 48118; ph.734-475-8307. The Parks office is the lead on this area, features and activities - particularly recreational and special areas, day-use, camping, and other activities or features in main portions in the south/south-east; they provide additional information products, other maps, plus more and updated details.

A DNR Recreation Passport is required for this area.
For information or to buy one, visit the DNR website or www.michigan.gov/recreationpassport, or call the Parks Headquarters (734-475-8307) for help or to buy one at the area from Parks staff.

Always park in signed locations
Ensure you look for & read any signs with additional information.



Legend:

Land: ■ Wildlife /Game Area - the Waterloo Wildlife Unit, OPEN to Hunting
■ Closed to Hunting (three areas in south to southeast)
■ Federal Land; cooperating Malan Waterfowl Production Area (WPA); Note: Open to Hunting, but MUST use Fed. approved non-toxic shot (like steel shot). Call if questions.

Other:
■ DNR Wildlife Headquarters
■ Waterloo State Recreation Area (SRA) portions outside of the Wildlife Unit, Open to Hunting; However, some small areas may be closed, depending on season and on recreational day-use activities. Contact office to confirm.
■ DNR Parks & Rec. Headquarters
■ Waterloo SRA Campsite areas
■ Waterloo SRA Activities areas
■ Other State Parks and State Rec. Areas (Pinckney SRA is on east side)

Parking: ■ Prepared Lots NO Rustic or Side-of-street; Park where indicated.
Boating: ▲ Prepared Ramp NO Rustic or Drop-in
Roads: — Highways — Gravel & Dirt Roads, Two-Tracks & Trails
— Paved Roads — Marsh in Area
Water: — Lakes, Ponds — Seas, Streams, Drains
— Rivers, Streams — Cities/ Villages
Other: — Town-Range-Section Lines (labeled 1-36, near center of block) — County Boundary
— Railroads — Power/Pipe Lines

- GPS coordinates at flagged points:
- 1 Local DNR-Wildlife Waterloo Office off Seymour Road: Lat.42.3285000°N, Long.84.1984170°W.
 - 2 Malan Waterfowl Production Area parking: Lat.42.4012764°N, Long.84.1703066°W.
 - 3 DNR Parks & Recreation Headquarters for Waterloo SRA, off McClure Road: Lat.42.3335321°N, Long.84.1061392°W.

Scan this QR block for:
 • More info on this or other areas, and
 1 Load an area map PDF
 2 PDF allows clicking on links or some location info start driving directions, and more...
 3 Use a PDF with your device's GPS; for directions click [here].
 4 For map help click [here]

Important! No shooting within 150 yards (450 feet) Safety Zones around all buildings, always enforced. Be Safe! Beware of deep water, and at ditch/dikes!

Hunter Monies Help Make This Area Possible

Map rev. 10/05/2016 - Wildlife Div./MS

Look for Watchable Wildlife viewing area signs for more information, trails or feature locations. Try **M-HUNT**, the DNR's online interactive mapping tool that helps you plan your outdoor hunting, trapping, or recreation adventures! www.mi.gov/mihunt