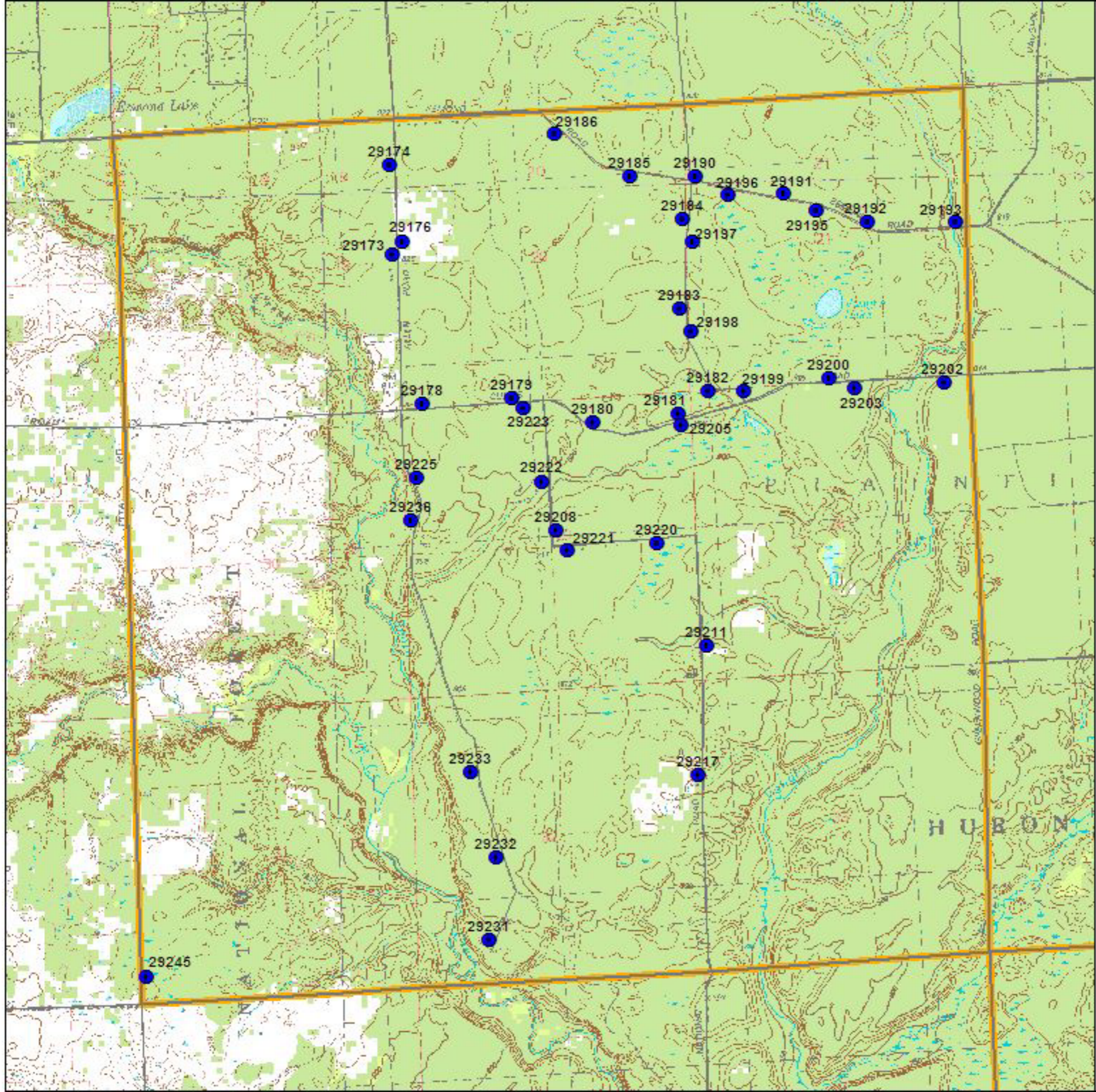


**Iosco  
County  
T23N R06E  
Plainfield  
Township  
Block 3**

**LEGEND**

-  BBA Point Sampling Locations (each numbered)
  -  Priority Block (1/4 twp)
  -  Other Blocks
- USGS Topographic Information:
-  Major and County Roads
  -  Trails and Two-tracks
  -  Topographic Lines
- Landuse / Landcover Backdrop
-  City Blocks
  -  Open Land, Residential, etc. incl. agriculture lands
  -  Mixed/ Deciduous / Evergreen Forest
  -  Woody Wetlands, Emergent / Herbaceous Wetlands
  -  Open Water



0 0.1 0.2 0.3 0.4 0.5 Miles



0 0.2 0.4 0.6 Kilometers



(rev. 2005 may 18)