



**DEPARTMENT OF NATURAL RESOURCES
STATE OF MICHIGAN**

TIMBER SALE PROSPECTUS #6733

SCHEDULED SALE DATE AND TIME: **3:00 p.m. (local time) on November 17, 2020.**

LOCATION: **INDIAN RIVER FIELD OFFICE, 6984 WILSON, INDIAN RIVER, MI 49749.**

CONTACT NAME: Lucas Merrick

PHONE NUMBER: (989) 732-3541

PROSPECTUS NOTE: The bidder is advised to inspect the sale area and review the location, estimated volumes, operating costs and contract terms of proposed sales. Please be aware that some landowners may request 60 days or more notice for access across their land.

Notice is hereby given that bids will be received by the Unit Manager, GAYLORD MANAGEMENT UNIT, for certain timber on the following described lands:

Barrens Mix (52-112-18) / T34N, R02W, SEC. 21, NENE.

T34N, R02W, SEC. 22, NW,NE,N1/2SE.

T34N, R02W, SEC. 23, SWNW,NWSW,S1/2SW.

Cheboygan County, Advertised Price \$52,728.70, 198.2 Acres, Aspen, Jack Pine.

SALE NOTE: There is an oak wilt restriction on this sale.

Payment Unit 4 shall be harvested during summer or snow off condition. Payment Units 4, 5 and 6, require six (6) inch stump height limit.

Overhead power-lines are present along Goose Lake Road.

TIMBER SALE INFORMATION

Barrens Mix (52-112-18)

T34N, R02W, SEC. 21; T34N, R02W, SEC. 22; T34N, R02W, SEC. 23.
Cheboygan County (Advertised Price \$52,728.70)

SALE NOTE: There is an oak wilt restriction on this sale.

Payment Unit 4 shall be harvested during summer or snow off condition. Payment Units 4, 5 and 6, require six (6) inch stump height limit.
Overhead power-lines are present along Goose Lake Road.

A timber sale contract for this lump sum, sealed bid timber sale will be awarded to the responsible bidder offering the highest sealed bid price.
All units of volume listed below were estimated using the T-Sale computer program and our traditional volume equations. Bids must be at or above the following advertised price for each product and species:

<u>PRODUCTS & SPECIES</u>	<u>ESTIMATED UNITS*</u>	<u>ADVERTISED PRICE</u>
Sawtimber		
B. T. Aspen	105.6 MBF	\$ 38.00 / MBF
Jack Pine	45.2 MBF	\$ 20.00 / MBF
Red Oak	38.0 MBF	\$ 138.00 / MBF
Red Pine	97.5 MBF	\$ 81.00 / MBF
Pulpwood		
B. T. Aspen	532 Cords	\$ 13.10 / Cord
Jack Pine	540 Cords	\$ 11.20 / Cord
Mixed Hardwood	12 Cords	\$ 16.70 / Cord
Quaking Aspen	21 Cords	\$ 13.10 / Cord
Red Maple	183 Cords	\$ 16.70 / Cord
Red Oak	118 Cords	\$ 14.40 / Cord
Red Pine	376 Cords	\$ 32.20 / Cord
White Oak	38 Cords	\$ 14.40 / Cord
White Pine	240 Cords	\$ 15.70 / Cord

* The total volume is statistically estimated within plus (+) or minus (-) 10.64 percent. There are an estimated 2,651 cords on this timber sale, plus or minus 282 cords at the 95% confidence level. The estimated units are final and not subject to adjustment. Prospective bidders are urged to examine this timber and to make their own estimates of quantity and quality.

BOND AND PAYMENT SCHEDULE:

1. A bond in the amount of \$2,636.44 to insure faithful performance of the conditions of the contract will be deposited by the successful bidder within 21 days of the sale award.
2. Cutting in any sale or unit without the required advance payment would be considered a trespass.
3. Total payment must be paid in advance or according to the following schedule :
 - (a) Ten percent (10%) of the sale value must be paid within 21 days of the sale award.
 - (b) The 10% down payment will be credited towards the first unit cut.
4. If no cutting takes place, the 10% down payment will not be refunded.
5. Operations on the contract issued will terminate on 12/31/2023.

SALE STATISTICS

SALE VOLUMES

VOLUME			STATISTICAL RANGE IN CORDS	
TOTAL CUBIC FEET	TOTAL CORDS	PERCENT ERROR	MINIMUM	MAXIMUM
209,438	2,651	10.64%	2,369	2,933

VDU VOLUMES

A VDU is a Volume Determination Unit. Volumes and their associated statistics are calculated at the VDU level and summarized to the sale level. There is often a one to one relationship between a VDU and a Payment Unit, but not always, depending on the cruise design. Refer to the VDU TO PAYMENT UNIT table.

	VOLUME			RANGE IN CORDS	
VDU	TOTAL CUBIC FEET	TOTAL CORDS	PERCENT ERROR	MINIMUM	MAXIMUM
1	36,585	463	19.83%	371	555
7	24,553	311	20.77%	246	375
9	51,753	655	25.08%	491	819
10	7,063	89	31.88%	61	118
11	6,028	76	61.94%	29	124
18	15,689	199	21.41%	156	241
53	4,582	58	57.93%	24	92
59	56,975	721	18.28%	589	853
73	4,037	51	54.08%	23	79
75	2,157	27	50.93%	13	41
TOTAL:	209,421	2,651		2,005	3,297

VDU TO PAYMENT UNIT

When a VDU is associated with more than one Payment Unit (PU), the VDU volumes are assigned to the PU based on acres of the VDU within the PU.

VDU	VDU ACRES	PU	PU ACRES
1	34.1	1	34.1
7	23.1	6	23.1
9	30.1	3	30.1
10	8.0	2	8.0
11	5.4	6	5.4
18	10.3	5	10.3
53	5.2	5	5.2
59	74.2	4	74.2
73	5.8	6	5.8
75	2.0	6	2.0
TOTAL:	198.2		198.2

DESCRIPTION OF TIMBER BY PU (PU)

PU	MARKET GROUP	PRODUCT	QUANTITY	UNIT	ACRES	ADVERTISE PRICE
1	B. T. Aspen	Sawtimber	0.8	MBF	34.1	\$7,953.40
	Red Pine		13.4	MBF		
	B. T. Aspen	Pulpwood	204	Cords		
	Red Maple		27	Cords		
	<i>Red Maple</i>		27	<i>Cords</i>		
	Red Pine		31	Cords		
	White Pine		173	Cords		
	<i>White Pine</i>	<i>Sawtimber</i>	18.5	<i>MBF</i>		
	<i>White Pine</i>	<i>Pulpwood</i>	136	<i>Cords</i>		
2	B. T. Aspen	Sawtimber	11.6	MBF	8.0	\$1,253.50
	B. T. Aspen	Pulpwood	33	Cords		
	Jack Pine		28	Cords		
	Red Maple		4	Cords		
	<i>Red Maple</i>		4	<i>Cords</i>		
3	B. T. Aspen	Sawtimber	59.8	MBF	30.1	\$13,923.40
	Red Oak		38.0	MBF		
	B. T. Aspen	Pulpwood	165	Cords		
	Jack Pine		4	Cords		
	Red Maple		86	Cords		
	<i>Red Maple</i>	<i>Sawtimber</i>	4.7	<i>MBF</i>		
	<i>Red Maple</i>	<i>Pulpwood</i>	77	<i>Cords</i>		
	Red Oak		118	Cords		
	White Oak		38	Cords		
	<i>White Oak</i>	<i>Sawtimber</i>	6.3	<i>MBF</i>		
	<i>White Oak</i>	<i>Pulpwood</i>	25	<i>Cords</i>		
	White Pine		33	Cords		
	<i>White Pine</i>	<i>Sawtimber</i>	2.6	<i>MBF</i>		
	<i>White Pine</i>	<i>Pulpwood</i>	28	<i>Cords</i>		
4	B. T. Aspen	Sawtimber	29.0	MBF	74.2	\$9,693.20
	Jack Pine		27.3	MBF		
	Red Pine		5.0	MBF		
	B. T. Aspen	Pulpwood	113	Cords		
	Jack Pine		367	Cords		
	Mixed Hardwood		8	Cords		
	<i>Black Cherry</i>	<i>Sawtimber</i>	0.5	<i>MBF</i>		
	<i>Black Cherry</i>	<i>Pulpwood</i>	7	<i>Cords</i>		
	Quaking Aspen		16	Cords		
	<i>Quaking Aspen</i>	<i>Sawtimber</i>	2.0	<i>MBF</i>		
	<i>Quaking Aspen</i>	<i>Pulpwood</i>	12	<i>Cords</i>		
	Red Maple		49	Cords		
	<i>Red Maple</i>	<i>Sawtimber</i>	1.9	<i>MBF</i>		
	<i>Red Maple</i>	<i>Pulpwood</i>	45	<i>Cords</i>		
	Red Pine		11	Cords		
	White Pine		34	Cords		
	<i>White Pine</i>	<i>Sawtimber</i>	3.2	<i>MBF</i>		
	<i>White Pine</i>	<i>Pulpwood</i>	28	<i>Cords</i>		
5	Red Pine	Sawtimber	30.4	MBF	15.5	\$7,519.40
	Jack Pine	Pulpwood	47	Cords		
	Mixed Hardwood		4	Cords		
	<i>Paper Birch</i>		4	<i>Cords</i>		
	Quaking Aspen		5	Cords		
	<i>Quaking Aspen</i>		5	<i>Cords</i>		
	Red Maple		5	Cords		
	<i>Red Maple</i>		5	<i>Cords</i>		
	Red Pine		134	Cords		

DESCRIPTION OF TIMBER BY PU (PU), CON'T

PU	MARKET GROUP	PRODUCT	QUANTITY	UNIT	ACRES	ADVERTISE PRICE
6	B. T. Aspen	Sawtimber	4.4	MBF	36.3	\$13,023.10
	Jack Pine		17.9	MBF		
	Red Pine		51.4	MBF		
	B. T. Aspen	Pulpwood	17	Cords		
	Jack Pine		94	Cords		
	Red Maple		12	Cords		
	Red Maple	Sawtimber	1.2	MBF		
	Red Maple	Pulpwood	10	Cords		
	Red Pine		213	Cords		
TOTAL:			289.0	MBF		
TOTAL:			2,073	Cords		

Sale Specific Conditions & Requirements

Sale Name: Barrens Mix

Sale Number: 52-112-18 Seq#: 2

1 - Sale Area

1.2 - Boundaries

1.2.1 - Painted boundaries (1/14)

The sale boundary and Payment Unit boundaries are marked and identified by blue, red, teal, and yellow paint. Exterior sale boundary lines against private property are marked with blue paint. Exterior sale boundary lines against state are marked with red paint. Interior Payment Unit boundaries are marked with yellow paint. The interior retention pocket in Payment Unit 1, is marked with teal paint. The painted boundary line trees are not Included Timber and are to be protected.

2 - Timber Specifications

2.1 - Included Timber

2.1.1 - Clearcut unit(s) with unmerchantable trees (6/14)

Within Payment Unit(s) 1, 2, 4 and 5, cut all trees that are two (2) inches or more at DBH, except do not cut any oak. In addition within Payment Unit 1, do not cut any white pine eighteen (18) inches or more at DBH. Also within Payment Units 2 and 5, do not cut any white pine. Additionally within Payment Unit 2, do not cut any red pine.

2.1.2 - Clearcut unit(s) w/o unmerchantable trees (8/11)

Within Payment Unit(s) 3, cut all trees which meet minimum piece specifications in 2.2 Utilization, except do not cut any red pine, white pine or teal marked trees.

2.1.8 - Designated plantation row unit(s) (12/08)

Within Payment Unit(s) 6, all red pine trees which meet minimum piece specifications in 2.2 Utilization, within designated plantation rows are designated for cutting. Designated plantation rows are every third row. If rows are not obvious, the sale administrator may approve harvest using a take one, leave two pattern (or take two leave three, if rows are too tight for operation). In addition, all jack pine is designated for harvest. Deciduous trees within designated rows may be harvested for equipment operation, except do not cut any oak. The Purchaser should work around oak, prior approval is required from the sale administrator before the removal of any oak.

2.2 - Utilization

2.2.3 - Stump heights (4/07)

Stump heights within Payment Unit(s) 4, 5 and 6, shall not exceed six (6) inches for all trees. This is in order to facilitate planting operations.

3 - Payments

3.4 - Damaged Timber

3.4.1 - Damaged timber (6/14)

General Condition and Requirement 3.4 Damaged Timber, defines liquidated damages for undesignated live merchantable trees which are cut or injured.

Within the Payment Unit 6, if more than 5% of the residual red pine within a specified portion of the sale area are damaged, liquidated damages will be assessed for all trees damaged. Rates will be in accordance with General Condition and Requirement 3.4 Damaged Timber.

4 - Transportation

4.1 - Construction

4.1.3 - Slash and earthen piles (8/04)

Piles or windrows of earth along roads and landings that have been widened or constructed shall be leveled. Slash from road maintenance or construction, including stumps, shall be chipped, utilized or otherwise dispersed throughout the sale.

4.1.6 - Road construction (1/09)

Construction of new roads or improvements of existing roads shall be done in such a way as to minimize the environmental and visual impacts. Merchantable trees shall be cut and utilized unless otherwise directed. Non-merchantable trees shall be severed and laid flat on the ground. Slash shall be chipped, utilized or otherwise dispersed throughout the sale. Stumps shall be set upright, not left on edge, and be moved at least 10 feet away from the road edge. Disturbed soil shall be feathered into the woods and not left in berms or windrows.

4.1.7 - Road closure (10/11)

All new roads built into the sale must be blocked to vehicle traffic upon completion of the sale. Overgrown roads that are reopened shall be considered new roads. These roads must be rendered impassable to cars and trucks. In general, this will require constructing a four (4') foot high berm of stumps and logs covered with earth. Temporary berms may be required if no sale activity occurs for 30 or more consecutive days. Contact the sale administrator for details of design and placement.

4.2 - Maintenance

4.2.5 - Two wheel drive condition (2/04)

All existing trail roads on and adjacent to the sale area must be passable by two-wheel drive traffic for the duration of the sale.

5 - Operations

5.1 - Notification

5.1.1 - Pre-sale conference (10/16)

A pre-sale conference on site between the Purchaser and sale administrator is required prior to beginning any operation to determine landing and road locations. The Unit Manager or their representative must be contacted at least 10 days in advance to schedule this conference.

5.2 - Conduct of Operations

5.2.1 - Slash

5.2.1.11 - Slash for reforestation (5/07)

To facilitate reforestation, the sale area shall be left with slash evenly distributed. Bunched tops within the cutting area shall be broken up and scattered. Stumps shall be cut low to the ground. Processing sites shall not be left with a compacted layer of slash; tops from these sites shall be hauled back into the cut area and scattered.

5.2.3 - Operating Restrictions

5.2.3.1 - Operating restrictions (9/11)

Within Payment Unit(s) 2 and 4, cutting, skidding and hauling may only occur during the summer months and snow-off condition. This restriction is to promote natural jack pine regeneration.

5.2.3.4 - Oak wilt restriction, no exceptions (1/18)

Within the sale area, cutting, skidding, hauling within the sale and brushing of access roads to the sale are not permitted during the period of April 15 to July 15. No exceptions will be granted. This is necessary to reduce the spread of oak wilt.

5.4 - Soil Protection

5.4.1 - Rutting restriction, general (7/16)

Operations are to cease immediately if equipment and weather conditions result in rutting of roads and/or skid trails which is twelve (12) inches or greater in depth and fifty (50) feet in length. The Unit Manager or his/her representative may restrict hauling and/or skidding if ruts exceed the specified depth. With the Unit Manager or his/her representative's approval, the Purchaser may return to the area when the risk of rutting has decreased.

5.8 - Protection of Endangered Species

5.8.5 - Protection of raptor nests (3/13)

All trees with raptor nests will be protected if found during harvesting operations. Notification will be made to the Unit Manager or his/her representative who will notify the Wildlife Biologist so an on-site evaluation and recommendation can be

made, if necessary.

6 - Safety and Fire Prevention

6.2 - Signing

6.2.1 - Road posting (9/09)

The Purchaser is responsible for posting and maintaining caution signs on Goose Lake Road and/or Afton Road, depending on which Payment Unit(s) are active, prior to beginning operations. The road must be posted at appropriate distances from the sale area to warn of logging activity and truck traffic. Signs must be removed when harvest operations are suspended or completed. The Purchaser shall provide these signs.

**TIMBER SALE MAP**

This information provided by authority of Part 525, 1994 PA 451, as amended.

Sale Number	Year
52 - 112	18

Forest Management Unit Gaylord Management Unit	County Cheboygan	Mapped By TSP	Date 08/30/2018	Page 1	of 2
Cruised By TSP					

Township 34N	Range 02W	Section(s) and Subdivision(s) Sec 21: NENE; Sec 22: N1/2, N1/2SE; 23: SWNW, NWSW, S1/2SW	Scale 1:15,840
-----------------	--------------	--	-------------------

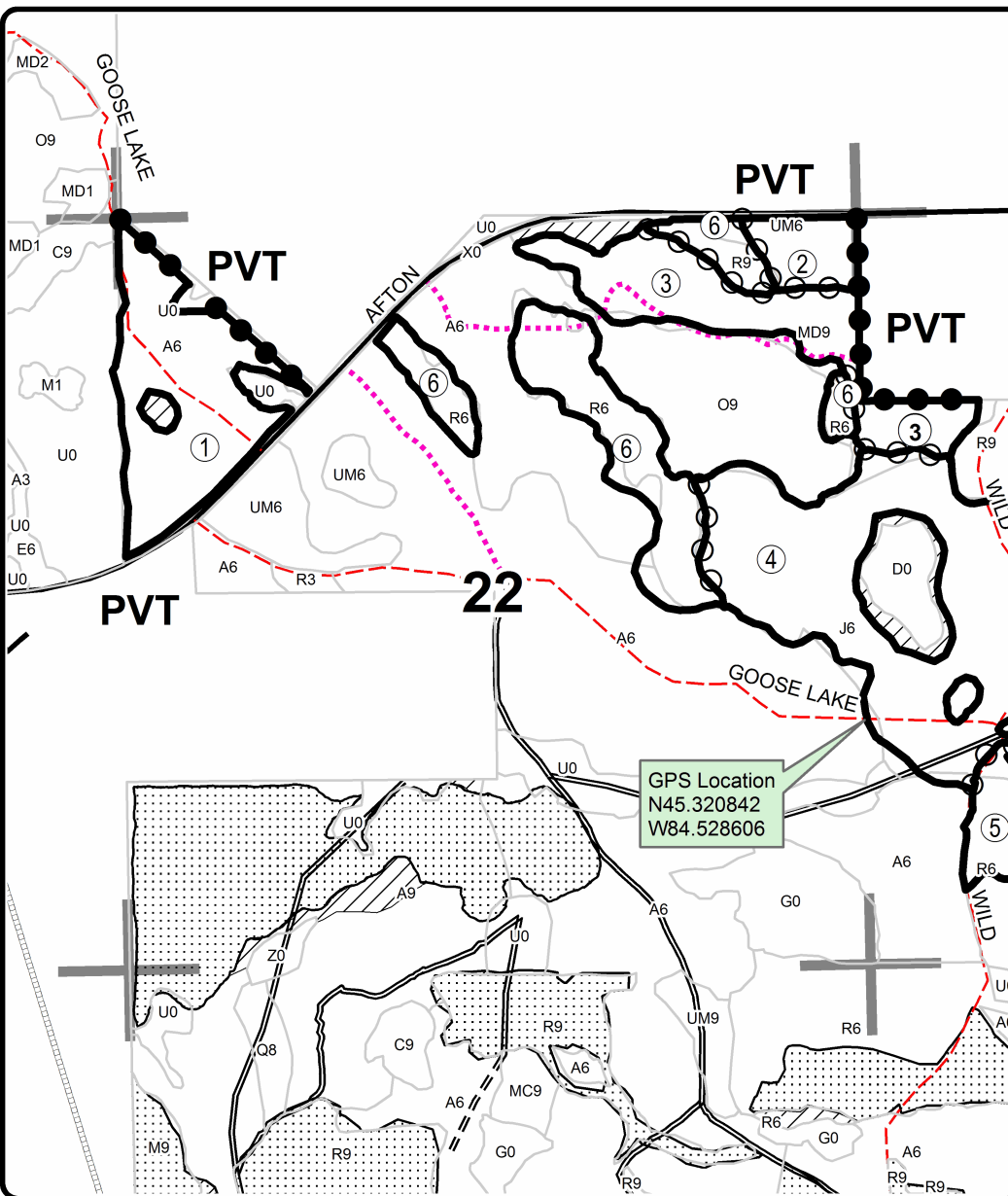
Cover Type

A = Aspen	H = Hemlock	N = Marsh	U = Upland Brush
B = Paper Birch	J = Jack Pine	O = Oak	UM = Upland Mixed
C = Cedar	L = Lowland Brush	P = Lowland Poplar	V = Bog or Marsh
D = Treed Bog	LM = Lowland Mixed	Q = Mixed Swamp Conifer	W = White Pine
E = Swamp Hdwoods	M = Mpl, Bch, Brch	R = Red Pine	X = Non Stocked
F = Spruce Fir	MC = Mixed Conifer	S = Black Spruce	Z = Water
G = Grass	MD = Mixed Deciduous	T = Tamarack	

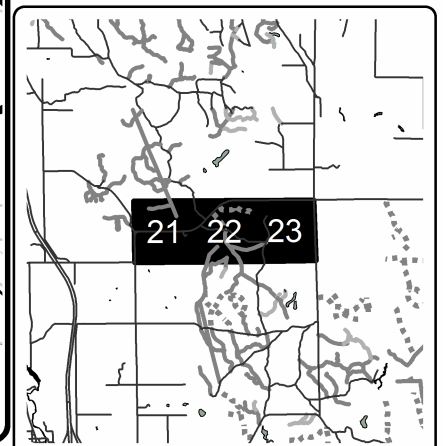
Density

0 = Non Stocked	5 = Pole Timber Medium
1 = Seedling Sapling Poor	6 = Pole Timber Well
2 = Seedling Sapling Medium	7 = Saw Timber Poor
3 = Seedling Sapling Well	8 = Saw Timber Medium
4 = Pole Timber Poor	9 = Saw Timber Well

PU	Acres	PU	Acres
1	34.1	4	74.2
2	8	5	15.5
3	30.1	6	36.3

Barrens Mix
Compartment 173
198.2 Acres**Legend**

- Against State (Red)
- ○ Payment Unit (Yellow)
- ● Private Line (Blue)
- Stand Boundaries
- ▨ Retention Area (Teal or Red)
- ▤ Nearby Timber Sales
- == Secondary Forest Road
- == Forest Access Route
- Paved Road
- - - County Road - Seasonal
- ... Temporary Management Access
- Section Corners

Locator Map
1:200,000

0 0.125 0.25 0.5 0.75 1 Miles

**TIMBER SALE MAP**

This information provided by authority of Part 525, 1994 PA 451, as amended.

Sale Number	Year
52 - 112	18

Forest Management Unit Gaylord Management Unit	County Cheboygan	Mapped By TSP	Date 08/30/2018	Page 2	of 2
Cruised By TSP					

Township 34N	Range 02W	Section(s) and Subdivision(s) Sec 21: NENE; Sec 22: N1/2, N1/2SE; 23: SWNW, NWSW, S1/2SW	Scale 1:15,840
-----------------	--------------	--	-------------------

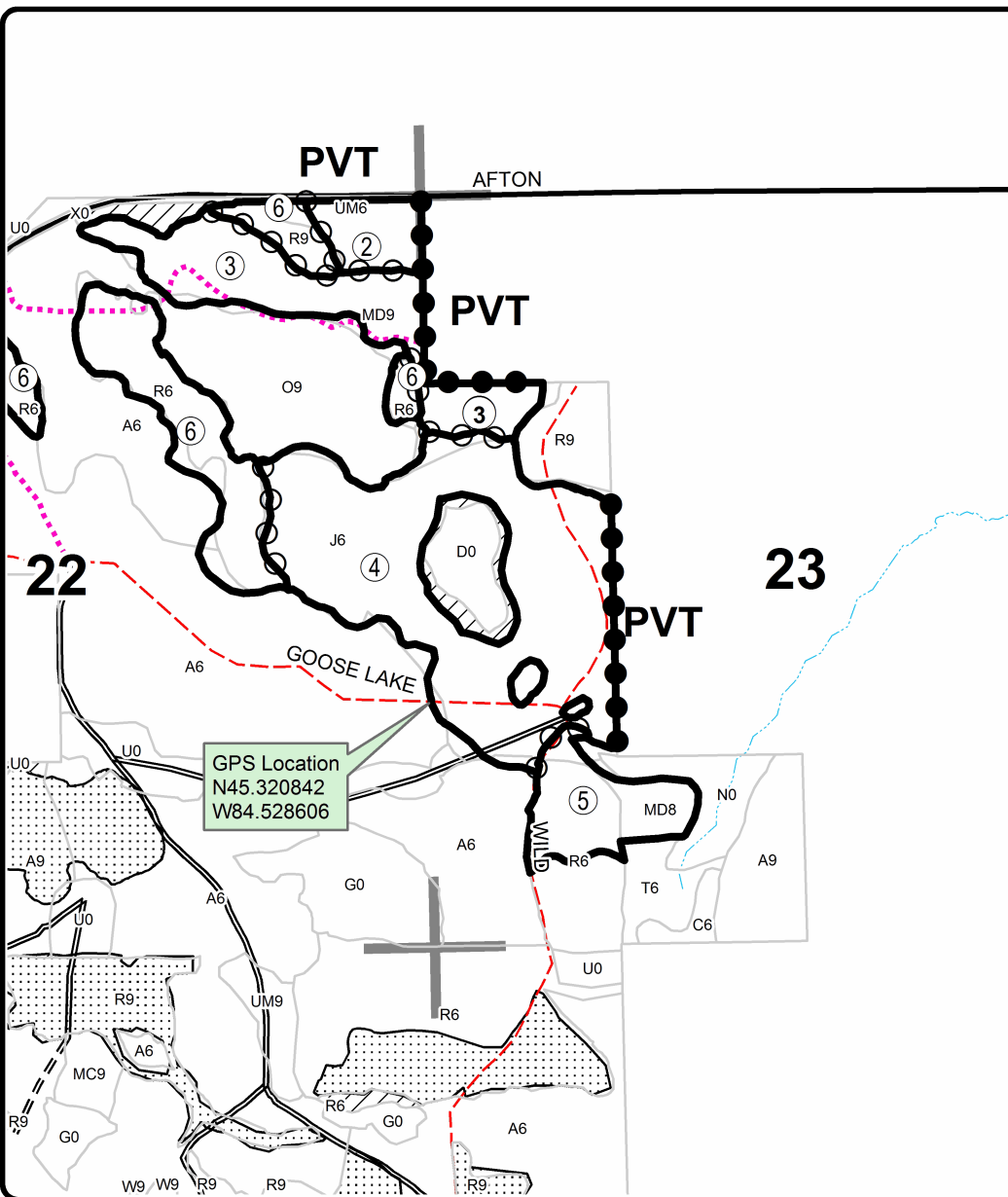
Cover Type

A = Aspen	H = Hemlock	N = Marsh	U = Upland Brush
B = Paper Birch	J = Jack Pine	O = Oak	UM = Upland Mixed
C = Cedar	L = Lowland Brush	P = Lowland Poplar	V = Bog or Marsh
D = Treed Bog	LM = Lowland Mixed	Q = Mixed Swamp Conifer	W = White Pine
E = Swamp Hdwoods	M = Mpl, Bch, Brch	R = Red Pine	X = Non Stocked
F = Spruce Fir	MC = Mixed Conifer	S = Black Spruce	Z = Water
G = Grass	MD = Mixed Deciduous	T = Tamarack	

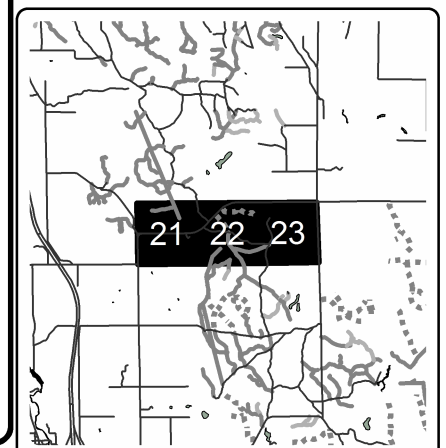
Density

0 = Non Stocked	5 = Pole Timber Medium
1 = Seedling Sapling Poor	6 = Pole Timber Well
2 = Seedling Sapling Medium	7 = Saw Timber Poor
3 = Seedling Sapling Well	8 = Saw Timber Medium
4 = Pole Timber Poor	9 = Saw Timber Well

PU	Acres	PU	Acres
1	34.1	4	74.2
2	8	5	15.5
3	30.1	6	36.3

Barrens Mix
Compartment 173
198.2 Acres**Legend**

- Against State (Red)
- ○ Payment Unit (Yellow)
- ● Private Line (Blue)
- Stand Boundaries
- ▨ Retention Area (Teal or Red)
- ▤ Nearby Timber Sales
- == Secondary Forest Road
- == Forest Access Route
- Paved Road
- - - County Road - Seasonal
- ... Temporary Management Access
- ... Intermittent Stream
- Section Corners

Locator Map
1:200,000

0 0.125 0.25 0.5 0.75 1 Miles