



**DEPARTMENT OF NATURAL RESOURCES  
STATE OF MICHIGAN**

**TIMBER SALE PROSPECTUS #6707**

SCHEDULED SALE DATE AND TIME: **2:00 p.m. (local time) on June 3, 2020.**

LOCATION: **SHINGLETON MGMT UNIT, PO BOX 67, M 28 WEST, SHINGLETON, MI 49884.**

CONTACT NAME: Robert Burnham

PHONE NUMBER: (906) 452-6227

PROSPECTUS NOTE: It is recommended that for the duration of the "Stay Home, Stay Safe" executive order that bidders submit their bids through the Online Bidding System (<https://www2.dnr.state.mi.us/VMSOnlineBidding/>). If you need to register, contact Jake Reid (ReidJ6@michigan.gov, 517-284-5908) or Donovan Asselin (AsselinD@michigan.gov, 517-930-1326). Paper bids will still be accepted during this time, either dropped in the bid box at the bid location or by mailing. If mailing, please allow for additional time.

The bidder is advised to inspect the sale area and review the location, estimated volumes, operating costs and contract terms of proposed sales. Please be aware that some landowners may request 60 days or more notice for access across their land.

Notice is hereby given that bids will be received by the Unit Manager, SHINGLETON MANAGEMENT UNIT, for certain timber on the following described lands:

Lotsapine (41-017-19) / T49N, R15W, SEC. 16, NESW,S1/2SW,SWSE.

T49N, R15W, SEC. 20, SE.

T49N, R15W, SEC. 21, NW,W1/2NE,NWSW,SESW,S1/2SE.

T49N, R15W, SEC. 28, NW,NE,NWSW,NESE.

T49N, R15W, SEC. 29, SENE,SESW,SE.

T49N, R15W, SEC. 32, NENW,N1/2NE.

Alger County, Advertised Price \$549,403.90, 576.2 Acres, Red Pine, White Pine.

SALE NOTE: The county must be contacted prior to crossing or harvesting in the County Road R-O-W. This applies to H-58 and the Hurricane Truck Trail (see spec 4.3.2 for details).

Permission for access across federal land is the responsibility of the Purchaser (see spec 4.4.5 for details).

H-58 and the Hurricane Truck Trail are snowmobile trails and they are shown on the Timber Sale Map (see specs 5.2.41 & 6.2.1 for details).

A recreation site such as a trail, pathway, or campground is within the sale area or the vicinity. Certain restrictions/specifications may be applicable including time restrictions. Access may be through other public land.

## TIMBER SALE INFORMATION

### Lotsapine (41-017-19)

T49N, R15W, SEC. 16; T49N, R15W, SEC. 20; T49N, R15W, SEC. 21; T49N, R15W, SEC. 28; T49N, R15W, SEC. 29; T49N, R15W, SEC. 32.

SALE NOTE: The county must be contacted prior to crossing or harvesting in the County Road R-O-W. This applies to H-58 and the Hurricane Truck Trail (see spec 4.3.2 for details).

Permission for access across federal land is the responsibility of the Purchaser (see spec 4.4.5 for details).

H-58 and the Hurricane Truck Trail are snowmobile trails and they are shown on the Timber Sale Map (see specs 5.2.41 & 6.2.1 for details).

A recreation site such as a trail, pathway, or campground is within the sale area or the vicinity. Certain restrictions/specifications may be applicable including time restrictions. Access may be through other public land.

A timber sale contract for this lump sum, sealed bid timber sale will be awarded to the responsible bidder offering the highest sealed bid price. Bids must be at or above the following advertised price for each species:

<u>PRODUCTS &amp; SPECIES</u>	<u>ESTIMATED UNITS*</u>	<u>ADVERTISED PRICE</u>
Pulpwood		
Balsam Fir	7.00 Cords	\$ 12.05 / Cord
Black Spruce	45.00 Cords	\$ 21.60 / Cord
Hemlock	9.00 Cords	\$ 10.55 / Cord
Jack Pine	1,183.00 Cords	\$ 23.30 / Cord
Paper Birch	409.00 Cords	\$ 11.45 / Cord
Quaking Aspen	23.00 Cords	\$ 23.35 / Cord
Red Maple	80.00 Cords	\$ 17.40 / Cord
Red Oak	9.00 Cords	\$ 24.75 / Cord
Red Pine	8,433.00 Cords	\$ 54.05 / Cord
White Pine	3,497.00 Cords	\$ 16.60 / Cord

### **BOND AND PAYMENT SCHEDULE:**

1. A bond in the amount of \$27,470.20 to insure faithful performance of the conditions of the contract will be deposited by the successful bidder within 21 days of the sale award.
2. Cutting in any sale or unit without the required advance payment would be considered a trespass.
3. Total payment must be paid in advance or according to the following schedule :
  - (a) Ten percent (10%) of the sale value must be paid within 21 days of the sale award.
  - (b) The 10% down payment will be credited towards the first unit cut.
4. If no cutting takes place, the 10% down payment will not be refunded.
5. Operations on the contract issued will terminate on 06/30/2023.

**Description of Timber by Payment Unit (PU)**

PU	MARKET GROUP	PRODUCT	QUANTITY	UNIT	ACRES	ADVERTISE PRICE
1	Jack Pine	Pulpwood	24.0	Cords	10.8	\$11,056.85
	Red Pine		189.0	Cords		
	White Pine		17.0	Cords		
2	Red Pine	Pulpwood	694.0	Cords	16.9	\$37,726.50
	White Pine		13.0	Cords		
3	Jack Pine	Pulpwood	176.0	Cords	16.9	\$19,369.00
	Paper Birch		7.0	Cords		
	Red Pine		281.0	Cords		
4	Jack Pine	Pulpwood	27.0	Cords	22.6	\$44,018.35
	Red Pine		757.0	Cords		
	White Pine		149.0	Cords		
5	Red Maple	Pulpwood	2.0	Cords	9.4	\$5,530.10
	Red Pine		90.0	Cords		
	White Pine		38.0	Cords		
6	Black Spruce	Pulpwood	21.0	Cords	45.2	\$63,872.00
	Jack Pine		194.0	Cords		
	Paper Birch		11.0	Cords		
	Red Pine		1,037.0	Cords		
	White Pine		164.0	Cords		
7	Jack Pine	Pulpwood	13.0	Cords	18.1	\$16,049.45
	Paper Birch		3.0	Cords		
	Red Pine		252.0	Cords		
	White Pine		126.0	Cords		
8	Jack Pine	Pulpwood	106.0	Cords	38.6	\$51,104.55
	Paper Birch		8.0	Cords		
	Red Maple		8.0	Cords		
	Red Pine		855.0	Cords		
	White Pine		132.0	Cords		
9	Hemlock	Pulpwood	6.0	Cords	41.1	\$37,352.80
	Paper Birch		6.0	Cords		
	Red Maple		4.0	Cords		
	Red Oak		3.0	Cords		
	Red Pine		631.0	Cords		
	White Pine		179.0	Cords		
10	Black Spruce	Pulpwood	13.0	Cords	46.7	\$34,358.25
	Hemlock		3.0	Cords		
	Jack Pine		16.0	Cords		
	Paper Birch		5.0	Cords		
	Red Pine		547.0	Cords		
	White Pine		244.0	Cords		
11	Red Maple	Pulpwood	4.0	Cords	53.8	\$38,905.25
	Red Oak		6.0	Cords		
	Red Pine		631.0	Cords		
	White Pine		276.0	Cords		
12	Red Pine	Pulpwood	477.0	Cords	32.6	\$28,056.05
	White Pine		137.0	Cords		
13	Jack Pine	Pulpwood	228.0	Cords	17.0	\$13,729.55
	Paper Birch		8.0	Cords		
	Red Pine		131.0	Cords		
	White Pine		75.0	Cords		
14	Balsam Fir	Pulpwood	7.0	Cords	28.2	\$12,473.20
	Black Spruce		3.0	Cords		
	Jack Pine		25.0	Cords		
	Paper Birch		178.0	Cords		

**Description of Timber by Payment Unit (PU), con't**

PU	MARKET GROUP	PRODUCT	QUANTITY	UNIT	ACRES	ADVERTISE PRICE
14 con't	Red Maple	Pulpwood	34.0	Cords		
	Red Pine		109.0	Cords		
	White Pine		194.0	Cords		
15	Black Spruce	Pulpwood	8.0	Cords	25.8	\$8,119.50
	Jack Pine		25.0	Cords		
	Paper Birch		41.0	Cords		
	Red Maple		1.0	Cords		
	Red Pine		91.0	Cords		
	White Pine		118.0	Cords		
16	Red Pine	Pulpwood	132.0	Cords	21.5	\$7,699.00
	White Pine		34.0	Cords		
17	Jack Pine	Pulpwood	28.0	Cords	16.6	\$12,176.35
	Paper Birch		36.0	Cords		
	Quaking Aspen		23.0	Cords		
	Red Maple		13.0	Cords		
	Red Pine		150.0	Cords		
	White Pine		135.0	Cords		
18	Jack Pine	Pulpwood	321.0	Cords	26.1	\$19,405.30
	Paper Birch		25.0	Cords		
	Red Maple		8.0	Cords		
	Red Pine		175.0	Cords		
	White Pine		123.0	Cords		
19	Paper Birch	Pulpwood	7.0	Cords	52.4	\$52,641.65
	Red Maple		6.0	Cords		
	Red Pine		758.0	Cords		
	White Pine		692.0	Cords		
20	Paper Birch	Pulpwood	74.0	Cords	35.9	\$35,760.20
	Red Pine		446.0	Cords		
	White Pine		651.0	Cords		
TOTAL:			13,695.0	Cords		

## **Sale Specific Conditions & Requirements**

**Sale Name: Lotsapine**

**Sale Number: 41-017-19 Seq#: 1**

### **1 - Sale Area**

#### **1.2 - Boundaries**

##### **1.2.1 - Painted boundaries (1/14)**

The sale boundary and Payment Unit boundaries are marked and identified by blue, red and yellow paint. Exterior sale boundary lines against Pictured Rocks National Park are marked with blue paint. Exterior sale boundary lines against state are marked with red paint. Interior Payment Unit boundaries are marked with yellow paint. The painted boundary line trees are not Included Timber and are to be protected unless marked with orange paint. Yellow painted trees designating an interior Payment Unit boundary are only to be cut when all surrounding Payment Units have been paid.

### **2 - Timber Specifications**

#### **2.1 - Included Timber**

##### **2.1.1 - Clearcut unit(s) with unmerchantable trees (6/14)**

Within Payment Unit(s) 1-4, 6, and 8-12, cut all trees that are two (2) inches or more at DBH, except within Payment Units 1-4, 6, and 8, do not cut any hemlock or oak.

In addition, within Payment Units 1-4, 6, and 8-12, cut all standing dead trees and leave them on the ground. This is in order to facilitate aerial herbicide application as part of reforestation efforts.

##### **2.1.2 - Clearcut unit(s) w/o unmerchantable trees (8/11)**

Within Payment Unit(s) 13 and 18, cut all trees which meet minimum piece specifications in 2.2 Utilization, except do not cut any hemlock, oak or green marked trees.

##### **2.1.3 - Cut tree marked unit(s) (12/08)**

Within Payment Unit(s) 15 and 16, red pine and white pine are designated for cutting when marked with orange paint above and below stump height, regardless of merchantability. In addition, all other species are designated for cutting, regardless of merchantability, except do not cut hemlock and oak.

##### **2.1.5 - Overstory removal unit(s) (8/11)**

Within Payment Unit(s) 5, all trees with a stump diameter equal to or greater than 10 inches, which meet minimum piece specifications in 2.2 Utilization, are designated for cutting, except do not cut any hemlock and oak.

##### **2.1.7 - Leave tree marked unit(s) (6/14)**

Within Payment Unit(s) 7, 14, 17, 19, and 20, all trees which meet minimum piece specifications in 2.2 Utilization are designated for cutting, except do not cut any hemlock, oak or green marked trees.

#### **2.2 - Utilization**

##### **2.2.3 - Stump heights (4/07)**

Stump heights within Payment Unit(s) 1-4, 6, 8-13, 18 shall not exceed 12 inches for trees greater than 10 inches DBH and 4 inches for trees smaller than 10 inches DBH. This is in order to facilitate planting operations.

### **3 - Payments**

#### **3.3 - Pre-measured Sales**

##### **3.3.4 - Dividing payment units (7/14)**

Payment Unit(s) may be divided at the request of the Purchaser and upon approval of the Unit Manager. Dividing Payment Units is a contract modification which requires a Timber Sale Contract Supplement. There will be only one division per Payment Unit.

#### **3.4 - Damaged Timber**

#### 3.4.1 - Damaged timber (7/16)

General Condition and Requirement 3.4 Damaged Timber, defines liquidated damages for undesignated live merchantable trees which are cut or injured. In addition, extreme care should be taken to avoid damage to tree seedlings and saplings.

Within Payment Unit(s) 5, 7, 14-17, 19 and 20, if more than 25% of the tree seedlings or saplings (1/4" to 4.5" DBH) within a specified portion of the sale area are damaged, liquidated damages will be assessed at \$300 per acre for all acreage within that specified portion of the sale area that was damaged.

### 4 - Transportation

#### 4.1 - Construction

##### 4.1.3 - Slash and earthen piles (8/04)

Piles or windrows of earth along roads and landings that have been widened or constructed shall be leveled. Slash from road maintenance or construction, including stumps, shall be dispersed throughout the sale.

##### 4.1.6 - Road construction (1/09)

Construction of new roads or improvements of existing roads shall be done in such a way as to minimize the environmental and visual impacts. Merchantable trees shall be cut and utilized unless otherwise directed. Non-merchantable trees shall be severed and laid flat on the ground. Slash shall be scattered, and not left in windrows and kept a minimum of 10 feet back from the road edge. Stumps shall be set upright, not left on edge, and be moved at least 10 feet away from the road edge. Disturbed soil shall be feathered into the woods and not left in berms or windrows.

##### 4.1.7 - Road closure (10/11)

Some new roads built into the sale must be blocked to vehicle traffic upon completion of the sale. Overgrown roads that are reopened shall be considered new roads. These roads must be rendered impassable to cars and trucks. In general, this will require constructing a four (4') foot high berm of stumps and logs covered with earth. Contact the sale administrator for details of design and placement.

#### 4.2 - Maintenance

##### 4.2.4 - Grading (10/16)

For completion of the sale, state forest roads must be graded. In general, this will require a road grader or bull dozer to shape up the roads after forest products have been hauled off site. This includes cleaning of drainage areas, grading, crowning and filling with gravel, if necessary. The grading equipment to be used must be approved by the Unit Manager or his/her representative.

#### 4.3 - Public Right-of-Way

##### 4.3.2 - County R-O-W (12/06)

The county must be contacted prior to crossing or harvesting within the county road R-O-W. This applies to H-58 and the Hurricane Truck Trail.

#### 4.4 - Access

##### 4.4.5 - Federal property access (3/11)

Permission for access across federal land is the responsibility of the Purchaser. Access through Pictured Rocks National Park is required for access to existing roads into Payment Units 1-7. If such access is unavailable or cannot be obtained, a new road will need to be created.

### 5 - Operations

#### 5.1 - Notification

##### 5.1.1 - Pre-sale conference (10/16)

A pre-sale conference on site between the Purchaser and sale administrator is required prior to beginning any operations to determine landing and road locations. The Unit Manager or his/her representative must be contacted at least 10 days in advance to schedule the conference.

#### 5.2 - Conduct of Operations

## 5.2.1 - Slash

### 5.2.1.11 - Slash for reforestation (5/07)

To facilitate reforestation, the sale shall be left with slash evenly distributed. Bunched tops within the cutting area shall be broken up and scattered. Stumps shall be cut low to the ground. Processing sites shall not be left with a compacted layer of slash; tops from these sites shall be hauled back into the cut area and scattered.

## 5.2.3 - Operating Restrictions

### 5.2.3.6 - Bark beetle restriction (12/08)

In the event drought creates a high risk of pine bark beetle infestation, pine is not to be cut during the period March 1 through July 1, unless all portions of trees greater than two inches in diameter are removed from the sale area, reduced to chips, or treated to the satisfaction of the Unit Manager or his/her representative, within fifteen days of being severed from the stump. Pine log decks, pulpwood piles and treetops that are piled for chipping in the fall or winter within a 1/4 mile of susceptible sites must be removed before March 15. Residual slash must not be placed in piles or rows and must be spread over the site for quick drying. The Department of Natural Resources will exercise this specification if the risk of damage warrants.

### 5.2.32 - Decking/landing restoration (9/13)

All decking and landing areas must have the surface area restored to a condition equal to or better than before. This is to ensure the proper regeneration of the stand. Wood debris, chips and "cookies" from trimmings must be removed or scattered away from landing and loading areas and may not be windrowed on the edge.

### 5.2.38 - No decking against live trees (2/04)

Cut products may not be decked against unmarked or designated leave trees.

### 5.2.41 - Snowmobile trail protection (9/11)

H-58 and the Hurricane Truck Trail are snowmobile trails and are shown on the Timber Sale Map. Do not cut or damage posts with orange trail markers or traffic control signs. The snowmobile trail may not be used for any sale operations between December 1 and March 31.

## 5.4 - Soil Protection

### 5.4.1 - Rutting restriction, general (7/16)

Operations are to cease immediately if equipment and weather conditions result in rutting of roads and/or skid trails which is 12 inches or greater in depth and 50 feet in length. The Unit Manager or his/her representative may restrict hauling and/or skidding if ruts exceed the specified depth. With the Unit Manager or his/her representative's approval, the Purchaser may return to the area when the risk of rutting has decreased.

## 5.8 - Protection of Endangered Species

### 5.8.3 - Red shoulder hawk or goshawk (2/16)

In the event that an active red shoulder hawk or goshawk nest is found, the contract may be amended to protect the nest site until the nest is determined to be inactive. The value of the trees in this excluded area will be refunded or credited to the Purchaser. The nest will be buffered with a five-chain radius (eight acre) protection area, centered on the nest tree, in which there will be no cutting or new roads constructed. Avoid human disturbance, including loading and skidding, in the protection area.

An additional zone of five chains (ten chains centered on the active nest tree) will be established in which there is no management activity from April 1 to July 30. Limit biomass harvesting and chipping operations within this ten-chain zone, retain the maximum one-third of residues per the Woody Biomass Harvesting Guidelines (Michigan DNR 2010). Nests determined to be inactive will be protected with a one-chain no-harvest buffer.

## 6 - Safety and Fire Prevention

### 6.2 - Signing

#### 6.2.1 - Road posting (9/09)

The Purchaser is responsible for posting and maintaining caution signs on H-58 prior to beginning operations. The road must be posted at appropriate distances from the sale area to warn of logging activity and truck traffic. Signs must be removed

when harvest operations are suspended or completed. The Purchaser shall provide these signs.

## **7 - Other Conditions**

### **7.3 - Contract Modifications**

#### **7.3.3 - Modification for reforestation (8/05)**

When contractual work of Purchaser has been accepted for any Payment Unit identified on Sale Area Map, Payment Unit will be eliminated from the Sale Area on written notice so that reforestation operations can begin.





## TIMBER SALE MAP

This information provided by authority of Part 5, 1994 PA 451, as amended.

Sale Number	Year
017	19

Forest Management Unit Shingleton	County Alger	Mapped By Petrelius	Date 9-15-19	Page 1 of 2
Compartiment Number 133	Township 49N	Range 15W	Section(s) and Subdivision(s) 16: NE1/4, S1/2SW, S1/2SE 20: SE 21: NW, W1/2 NE, NW1/4, SE1/4, S1/2SE	Scale:  ... 4" .....  = 1 mile

## Cover Type

A = Aspen	J = Jack Pine	O = Oak	U = Upland Brush
B = Paper Birch	K = Rock	P = Lowland Poplar	UM = Upland Mix Forest
C = Cedar	L = Lowland Brush	Q = Mixed Swamp Conifer	V = Bog or Marsh
D = Treed Bog	LM = Lowland Mix	R = Red Pine	W = White Pine
E = Swamp Hardwoods	Forest	S = Black Spruce	X = Non Stocked
F = Spruce/Fir	M = Maple, Beech, Birch	T = Tamarack	Y = Sand
G = Grass	MC = Mixed Conifer		Z = Water
H = Hemlock	MD = Mixed Deciduous		
	N = Marsh		

## Density

0 = Non Stocked	5 = Pole Timber Medium
1 = Seedling Sapling Poor	6 = Pole Timber Well
2 = Seedling Sapling Medium	7 = Saw Timber Poor
3 = Seedling Sapling Well	8 = Saw Timber Medium
4 = Pole Timber Poor	9 = Saw Timber Well

LOTSAPINE

576.2 acres

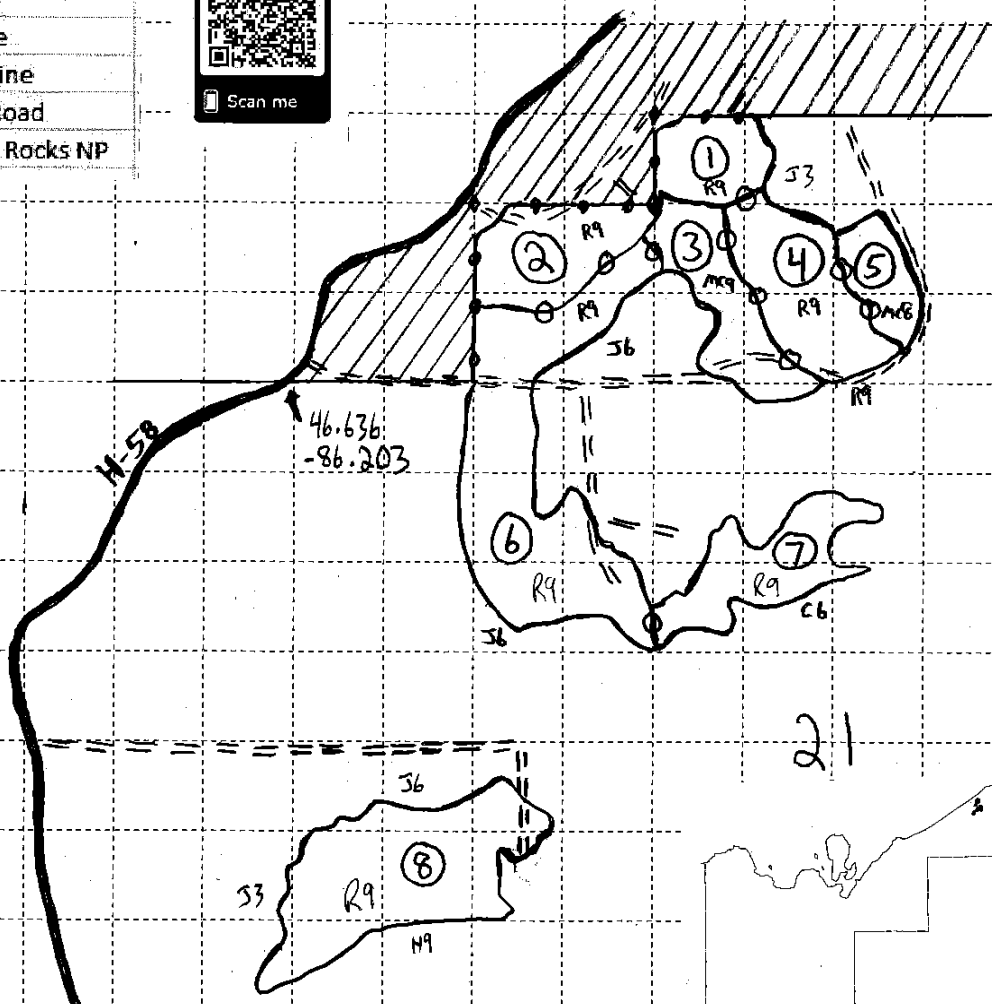


## Legend

① ②	Payment Unit #
◆	Survey Corner
—	Red Line
—+—	Blue Line
—o—	Yellow Line
==	Woods Road
////	Pictured Rocks NP



Unit	Acres
1	10.8
2	16.9
3	16.9
4	22.6
5	9.4
6	45.2
7	18.1
8	38.6
9	41.1
10	46.7
11	53.8
12	32.6
13	17
14	28.2
15	25.8
16	21.5
17	16.6
18	26.1
19	52.4
20	35.9





## TIMBER SALE MAP

This information provided by authority of Part 5, 1994 PA 451, as amended.

Sale Number	017	Year	19
Date	9-15-19	Page	2 of 2
Scale: [... 4" .....] = 1 mile			

Forest Management Unit	Shingleton	County	Alger	Mapped By	Petrelus
Compartment Number	133	Township	49N	Range	15W
		Section(s) and Subdivision(s) 26: NW, NE, NW, SW, NE, SE 29: SE, NE, SE, SW, SE 32: NE, NW, NE, NE			

Cover Type			
A = Aspen	J = Jack Pine	O = Oak	U = Upland Brush
B = Paper Birch	K = Rock	P = Lowland Poplar	UM = Upland Mix Forest
C = Cedar	L = Lowland Brush	Q = Mixed Swamp Conifer	V = Bog or Marsh
D = Treed Bog	LM = Lowland Mix	R = Red Pine	W = White Pine
E = Swamp Hardwoods	Forest	S = Black Spruce	X = Non Stocked
F = Spruce/Fir	M = Maple, Beech, Birch	T = Tamarack	Y = Sand
G = Grass	MC = Mixed Conifer		Z = Water
H = Hemlock	MD = Mixed Deciduous		
	N = Marsh		

Density	
0 = Non Stocked	5 = Pole Timber Medium
1 = Seedling Sapling Poor	6 = Pole Timber Well
2 = Seedling Sapling Medium	7 = Saw Timber Poor
3 = Seedling Sapling Well	8 = Saw Timber Medium
4 = Pole Timber Poor	9 = Saw Timber Well

Unit	Acres
1	10.8
2	16.9
3	16.9
4	22.6
5	9.4
6	45.2
7	18.1
8	38.6
9	41.1
10	46.7
11	53.8
12	32.6
13	17
14	28.2
15	25.8
16	21.5
17	16.6
18	26.1
19	52.4
20	35.9

## Legend

① ②	Payment Unit #
◆	Survey Corner
—	Red Line
—+—	Blue Line
—●—	Yellow Line
==	Woods Road
////	Pictured Rocks NP
●	Retention Pocket

LOTSAPINE

576.2 acres

