



**DEPARTMENT OF NATURAL RESOURCES  
STATE OF MICHIGAN**

**TIMBER SALE PROSPECTUS #6619**

SCHEDULED SALE DATE AND TIME: **10:00 a.m. (local time) on March 3, 2020.**

LOCATION: **ATLANTA MGMT UNIT, 13501 M 33, ATLANTA, MI 49709.**

CONTACT NAME: Cody Stevens

PHONE NUMBER: (989) 785-4251

PROSPECTUS NOTE: The bidder is advised to inspect the sale area and review the location, estimated volumes, operating costs and contract terms of proposed sales. Please be aware that some landowners may request 60 days or more notice for access across their land.

Notice is hereby given that bids will be received by the Unit Manager, ATLANTA MANAGEMENT UNIT, for certain timber on the following described lands:

Jeopardy Music Mix (54-007-19) / T33N, R02E, SEC. 29, S1/2NW,N1/2SW.

T33N, R02E, SEC. 30, SWNW,S1/2NE,N1/2SW,N1/2SE.

Presque Isle County, Advertised Price \$38,763.00, 111.6 Acres, Hardwood, Jack Pine.

SALE NOTE: See spec 5.5.3 regarding the wood fences along Canada Creek Highway.

## TIMBER SALE INFORMATION

Jeopardy Music Mix (54-007-19)

T33N, R02E, SEC. 29; T33N, R02E, SEC. 30.

Presque Isle County (Advertised Price \$38,763.00)

SALE NOTE: See spec 5.5.3 regarding the wood fences along Canada Creek Highway.

A timber sale contract for this lump sum, sealed bid timber sale will be awarded to the responsible bidder offering the highest sealed bid price.

Bids must be at or above the following advertised price for each species:

<u>PRODUCTS &amp; SPECIES</u>	<u>ESTIMATED UNITS*</u>	<u>ADVERTISED PRICE</u>
Sawtimber		
Mixed Aspen	21.20 MBF	\$ 85.00 / MBF
Red Pine	9.30 MBF	\$ 122.00 / MBF
Pulpwood		
Balsam Fir	1.00 Cords	\$ 27.60 / Cord
Jack Pine	414.00 Cords	\$ 22.80 / Cord
Mixed Aspen	276.00 Cords	\$ 25.25 / Cord
Mixed Oak	529.00 Cords	\$ 31.80 / Cord
Red Maple	15.00 Cords	\$ 22.10 / Cord
Red Pine	28.00 Cords	\$ 49.75 / Cord
White Pine	29.00 Cords	\$ 29.10 / Cord

### **BOND AND PAYMENT SCHEDULE:**

1. A bond in the amount of \$1,938.15 to insure faithful performance of the conditions of the contract will be deposited by the successful bidder within 21 days of the sale award.
2. Cutting in any sale or unit without the required advance payment would be considered a trespass.
3. Total payment must be paid in advance or according to the following schedule :
  - (a) Ten percent (10%) of the sale value must be paid within 21 days of the sale award.
  - (b) The 10% down payment will be credited towards the first unit cut.
4. If no cutting takes place, the 10% down payment will not be refunded.
5. Operations on the contract issued will terminate on 12/31/2022.

**Description of Timber by Payment Unit (PU)**

PU	MARKET GROUP	PRODUCT	QUANTITY	UNIT	ACRES	ADVERTISE PRICE
1	Mixed Aspen	Sawtimber	6.2	MBF	13.3	\$5,370.40
	<i>B. T. Aspen</i>		5.1	<i>MBF</i>		
	<i>Quaking Aspen</i>		1.1	<i>MBF</i>		
	Red Pine	Pulpwood	0.5	MBF		
	Balsam Fir		1.0	Cords		
	Jack Pine		70.0	Cords		
	Mixed Aspen		47.0	Cords		
	Mixed Oak		47.0	Cords		
	Red Maple		3.0	Cords		
	Red Pine		3.0	Cords		
	White Pine		9.0	Cords		
2	Mixed Aspen	Sawtimber	1.8	MBF	15.8	\$5,296.05
	<i>B. T. Aspen</i>		1.8	<i>MBF</i>		
	Red Pine	Pulpwood	2.1	MBF		
	Jack Pine		118.0	Cords		
	Mixed Aspen		33.0	Cords		
	Mixed Oak		35.0	Cords		
	Red Maple		1.0	Cords		
	Red Pine		4.0	Cords		
	White Pine		1.0	Cords		
3	Mixed Aspen	Sawtimber	8.3	MBF	18.7	\$8,691.75
	<i>B. T. Aspen</i>		8.3	<i>MBF</i>		
	Red Pine	Pulpwood	2.4	MBF		
	Jack Pine		28.0	Cords		
	Mixed Aspen		140.0	Cords		
	Mixed Oak		103.0	Cords		
	Red Maple		3.0	Cords		
	Red Pine		3.0	Cords		
	White Pine		1.0	Cords		
4	Mixed Aspen	Sawtimber	1.9	MBF	23.1	\$8,324.40
	<i>B. T. Aspen</i>		1.9	<i>MBF</i>		
	Red Pine	Pulpwood	1.9	MBF		
	Jack Pine		32.0	Cords		
	Mixed Aspen		40.0	Cords		
	Mixed Oak		176.0	Cords		
	Red Maple		1.0	Cords		
	Red Pine		8.0	Cords		
	White Pine		6.0	Cords		
5	Mixed Aspen	Sawtimber	2.1	MBF	13.6	\$4,351.05
	<i>B. T. Aspen</i>		2.1	<i>MBF</i>		
	Red Pine	Pulpwood	1.2	MBF		
	Jack Pine		15.0	Cords		
	Mixed Aspen		9.0	Cords		
	Mixed Oak		86.0	Cords		
	Red Maple		6.0	Cords		
	Red Pine		6.0	Cords		
	White Pine		10.0	Cords		
6	Mixed Aspen	Sawtimber	0.9	MBF	27.1	\$6,697.55
	<i>B. T. Aspen</i>		0.9	<i>MBF</i>		
	Red Pine	Pulpwood	1.2	MBF		
	Jack Pine		151.0	Cords		
	Mixed Aspen		7.0	Cords		
	Mixed Oak		81.0	Cords		
	Red Maple		1.0	Cords		
	Red Pine		4.0	Cords		

**Description of Timber by Payment Unit (PU), con't**

PU	MARKET GROUP	PRODUCT	QUANTITY	UNIT	ACRES	ADVERTISE PRICE
6 con't	White Pine	Pulpwood	2.0	Cords		
TOTAL:			30.5	MBF		
TOTAL:			1,291.0	Cords		

## **Sale Specific Conditions & Requirements**

**Sale Name: Jeopardy Music Mix**

**Sale Number: 54-007-19 Seq#: 2**

### **1 - Sale Area**

#### **1.2 - Boundaries**

##### **1.2.1 - Painted boundaries (1/14)**

The sale boundary and Payment Unit boundaries are marked and identified by red and yellow paint, along with Canada Creek Highway. Exterior sale boundary lines against state are marked with red paint, with the exception of the southern boundary of the sale, which is unpainted and identified by Canada Creek Highway. Interior retention areas are marked with red X's. Interior Payment Unit boundaries are marked with yellow paint. The red painted trees and trees with both red and yellow paint are not Included Timber and are to be protected. Yellow painted trees designating an interior Payment Unit boundary are only to be cut when all surrounding Payment Units have been paid.

### **2 - Timber Specifications**

#### **2.1 - Included Timber**

##### **2.1.1 - Clearcut unit(s) with unmerchantable trees (6/14)**

Within Payment Unit(s) 1-6, cut all trees that are two (2) inches or more at DBH.

#### **2.2 - Utilization**

##### **2.2.2 - Chipping required (2/18)**

Payment Units 1, 2, and 6 must be chip harvested to facilitate subsequent planting operations. The Purchaser has the option to produce sawlogs or pulpwood bolts, but the remaining portion of the trees must be chipped and hauled. If market conditions limit the practicality of chipping, tops and slash must be arranged in a way that will not inhibit future planting operations, as directed by the sale administrator. The requirement to retain approximately 1/6 to 1/3 of tree tops and limbs less than four inches in diameter is still applicable (G. C. & R. 2.2).

##### **2.2.3 - Stump heights (4/07)**

Stump heights within Payment Units 1, 2 and 6 shall not exceed 6 inches for all trees. This is in order to facilitate planting operations.

### **3 - Payments**

#### **3.6 - Payment Unit Cutting Schedule**

##### **3.6.1 - Order of cutting (1/09)**

Payment Units shall be cut in numerical order due to slope and soil concerns, unless approved by the Unit Manager or his/her representative.

### **4 - Transportation**

#### **4.1 - Construction**

##### **4.1.3 - Slash and earthen piles (8/04)**

Piles or windrows of earth along roads and landings that have been widened or constructed shall be leveled. Slash from road maintenance or construction, including stumps, shall be dispersed throughout Payment Units 3-5.

##### **4.1.12 - No new roads (1/12)**

No new roads will be permitted in any Payment Unit. All operations are limited to existing roads. Skid trails only will be allowed.

#### **4.2 - Maintenance**

##### **4.2.5 - Two wheel drive condition (2/04)**

All existing trail roads on and adjacent to the sale area must be passable by two-wheel drive traffic for the duration of the

sale.

## 5 - Operations

### 5.1 - Notification

#### 5.1.1 - Pre-sale conference (10/16)

A pre-sale conference on site between the Purchaser and sale administrator is required prior to beginning any operations to discuss landing locations and slope concerns. The Unit Manager or his/her representative must be contacted at least 10 days in advance to schedule the conference.

#### 5.1.3 - Well heads and natural gas pipelines (11/15)

The Purchaser is responsible for contacting the gas company 30 days prior to operating equipment in the vicinity of well heads or natural gas pipelines. Contact Lambda Energy Resources LLC at 281-920-9595. Shut-off valves are located along two-tracks that lead to the sale, but are not shown on the Timber Sale Map.

#### 5.1.4 - Post-sale conference (10/16)

A post-sale conference on site between the Purchaser and sale administrator is required 5 days prior to the completion of active logging operations to determine clean-up and repair of landings, road edges, and the fulfillment of other contract specifications.

### 5.2 - Conduct of Operations

#### 5.2.1 - Slash

##### 5.2.1.10 - No slash in openings (5/10)

No brush or logging debris is to be left in the maintained wildlife opening which is indicated by G0 on the Timber Sale Map. Any damage to the opening shall be repaired according to specifications of the Unit Manager or his/her representative.

#### 5.2.2 - Hazard Trees/Snags

##### 5.2.2.1 - Den trees (10/16)

Obvious hollow and/or den trees shall be protected and left standing unless they are a safety hazard.

#### 5.2.3 - Operating Restrictions

##### 5.2.3.4 - Oak wilt restriction, no exceptions (1/18)

Within Payment Units 1-6, cutting, skidding, hauling within the sale and brushing of access roads to the sale are not permitted during the period of April 15 to July 15. No exceptions will be granted. This is necessary to reduce the spread of oak wilt.

##### 5.2.3.11 - Coppice regeneration protection (4/10)

Timber harvesting in Payment Units 3, 4, and 5 must be completed before significant deciduous sprouting occurs to minimize damage to the new regeneration. Any post harvest operations, such as chipping, must be completed before sprouting of regeneration occurs. If it is anticipated that chipping will be delayed, then tops shall be carried to one central location or left unchipped. The Unit Manager or his/her representative may cease such operations if sprouting occurs before the operation is complete.

#### 5.2.4 - Dead and Down Creation

##### 5.2.4.7 - Dead and down creation: hare, grouse, deer and other species (5/15)

To improve horizontal cover habitat for snowshoe hare, grouse, deer, and other species, the Purchaser is to push over at least one, 12 inch diameter, merchantable tree for every two acres within Payment Units 3, 4, and 5. These trees should be tipped over with the root ball still attached so the base of the tree is suspended off the ground. The crown of the fallen tree should be at or near ground level after it is pushed over.

#### 5.2.31 - Landing locations (9/13)

Landing areas are show on the Timber Sale Map and must be confined to these designated sites, unless otherwise authorized by the Unit Manager or his/her representative.

#### 5.2.32 - Decking/landing restoration (9/13)

All decking and landing areas must have the surface area restored to a condition equal to or better than before. This is to ensure the proper regeneration of the stand. Wood debris, chips and "cookies" from trimmings must be removed or scattered away from landing and loading areas and may not be windrowed on the edge.

### 5.4 - Soil Protection

#### 5.4.1 - Rutting restriction, general (7/16)

Operations are to cease immediately if equipment and weather conditions result in rutting of roads and/or skid trails which is 12 inches or greater in depth and 50 feet in length. The Unit Manager or his/her representative may restrict hauling and/or skidding if ruts exceed the specified depth. With the Unit Manager or his/her representative's approval, the Purchaser may return to the area when the risk of rutting has decreased.

#### 5.4.4 - Slope protection (5/15)

Skid trails and roads on slopes shall be water barred with slash, stumps, and/or clean straw bales native to the area as soon as use is complete to prevent erosion.

### 5.5 - Protection of Improvements

#### 5.5.3 - Protection of improvements detail (10/13)

The wood fences along Canada Creek Highway do not apply to General Condition and Requirement 5.5, i.e., these fences do not need to be protected. The Purchaser may destroy, remove, or dispose of these fences, if needed.

### 5.8 - Protection of Endangered Species

#### 5.8.5 - Protection of raptor nests (3/13)

All trees with raptor nests will be protected if found during harvesting operations. Notification will be made to the Unit Manager or his/her representative who will notify the Wildlife Biologist so an on-site evaluation and recommendation can be made, if necessary.

**TIMBER SALE MAP**

This information provided by authority of Part 525, 1994 PA 451, as amended.

Sale Number

54 - 007

Year

19

Forest Management Unit  
AtlantaCounty  
Presque Isle

Mapped By J. Mittig

Date

06/05/2019

Page

1

of

2

Township

33N

Range

02E

Section(s) and Subdivision(s)

Section 29 S1/2NW,N1/2SW

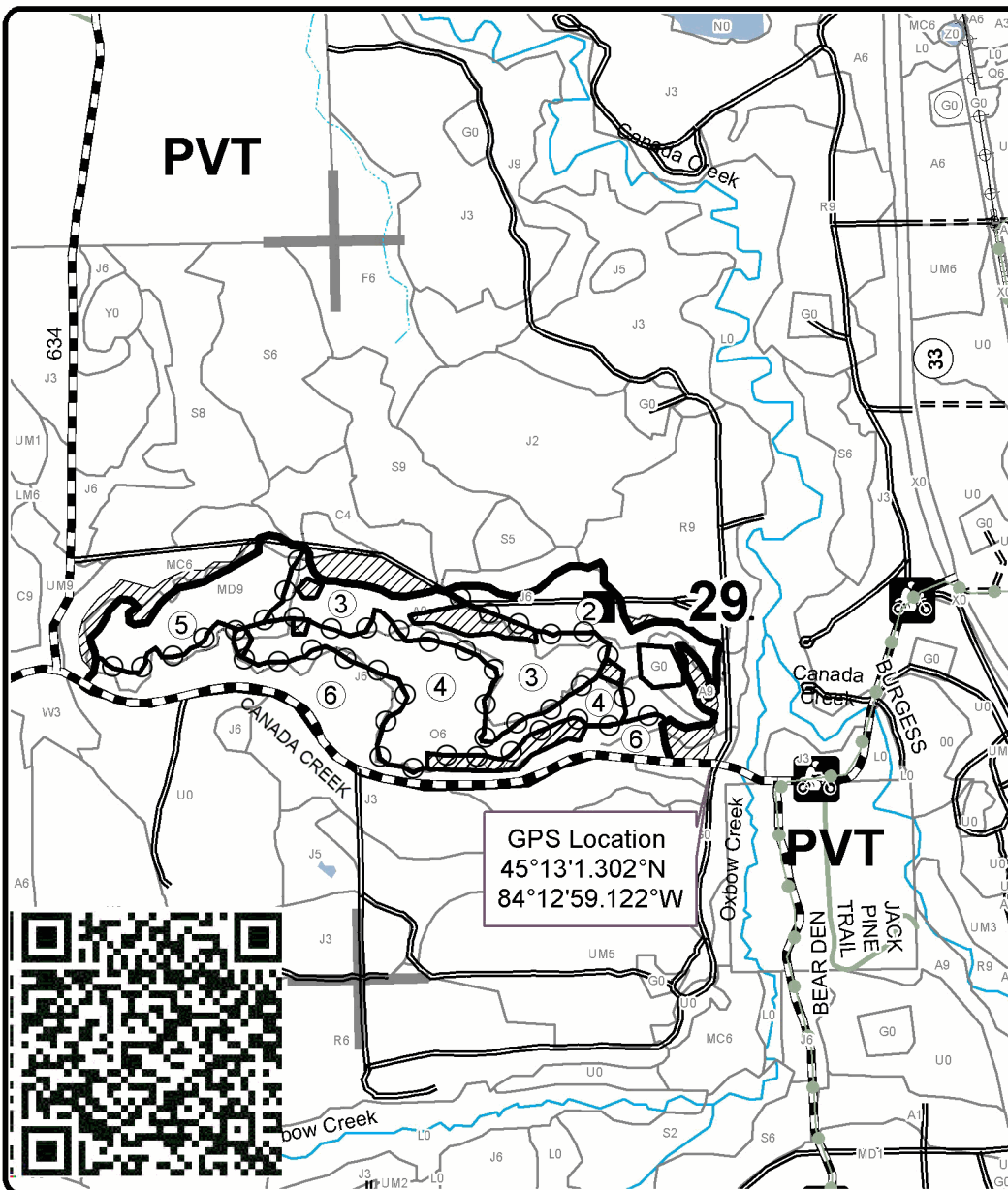
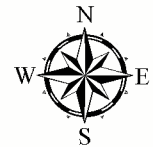
Section 30 SWNW,S1/2NE,N1/2SW,N1/2SE

Scale

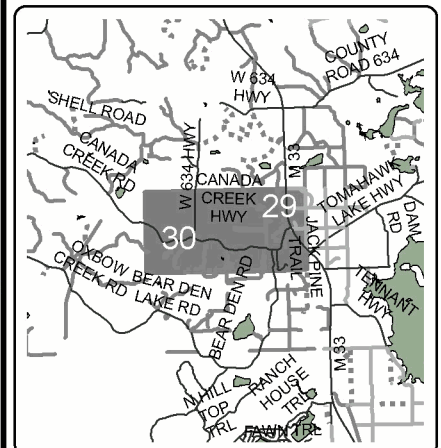
1:15,840

**Cover Type**A = Aspen  
B = Paper Birch  
C = Cedar  
D = Treed Bog  
E = Swamp Hdwoods  
F = Spruce Fir  
G = GrassH = Hemlock  
J = Jack Pine  
L = Lowland Brush  
LM = Lowland Mixed  
M = Mpl, Bch, Brch  
MC = Mixed Conifer  
MD = Mixed DeciduousN = Marsh  
O = Oak  
P = Lowland Poplar  
Q = Mixed Swamp Conifer  
R = Red Pine  
S = Black Spruce  
T = TamarackU = Upland Brush  
UM = Upland Mixed  
V = Bog or Marsh  
W = White Pine  
X = Non Stocked  
Z = Water**Density**0 = Non Stocked  
1 = Seedling Sapling Poor  
2 = Seedling Sapling Medium  
3 = Seedling Sapling Well  
4 = Pole Timber Poor5 = Pole Timber Medium  
6 = Pole Timber Well  
7 = Saw Timber Poor  
8 = Saw Timber Medium  
9 = Saw Timber Well

PU	Acres	PU	Acres
1	13.3	4	23.1
2	15.8	5	13.6
3	18.7	6	27.1

**Jeopardy Music Mix**  
Compartment 121  
111.6 Acres**Legend**

- Against State (Red)
- ⊕ Payment Unit (Yellow)
- Payment Unit Label
- Landing
- ▨ Retention Area
- Stand Boundaries
- Section Corners
- Recreational Trail
- Secondary Forest Road
- == Forest Access Route
- Gravel Road
- Private Road
- Intermittent Stream
- Perennial River

Locator Map  
1:150,000

0 0.125 0.25 0.5 0.75 1 Miles



**TIMBER SALE MAP**

This information provided by authority of Part 525, 1994 PA 451, as amended.

Sale Number

54 - 007

Year

19

Forest Management Unit  
AtlantaCounty  
Presque Isle

Mapped By J. Mittig

Date

06/05/2019

Page

of 2

Cruised By J. Mittig

Township  
33NRange  
02E

Section(s) and Subdivision(s)

Section 29 S1/2NW,N1/2SW

Section 30 SWNW,S1/2NE,N1/2SW,N1/2SE

Scale

1:15,840

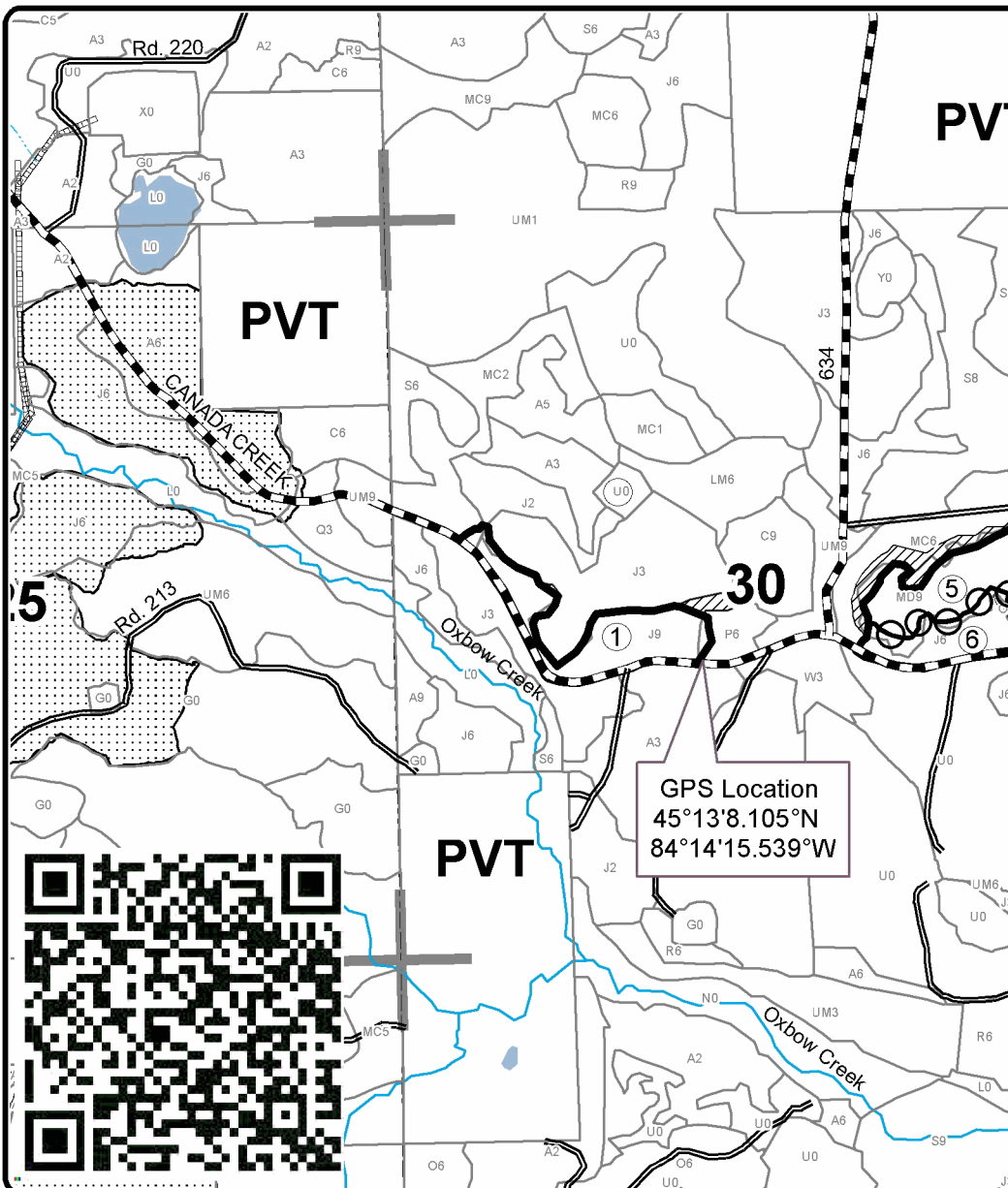
**Cover Type**

A = Aspen	H = Hemlock	N = Marsh	U = Upland Brush
B = Paper Birch	J = Jack Pine	O = Oak	UM = Upland Mixed
C = Cedar	L = Lowland Brush	P = Lowland Poplar	V = Bog or Marsh
D = Treed Bog	LM = Lowland Mixed	Q = Mixed Swamp Conifer	W = White Pine
E = Swamp Hdwoods	M = Mpl, Bch, Brch	R = Red Pine	X = Non Stocked
F = Spruce Fir	MC = Mixed Conifer	S = Black Spruce	Z = Water
G = Grass	MD = Mixed Deciduous	T = Tamarack	

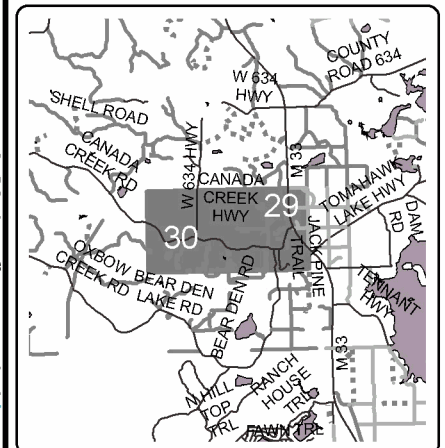
**Density**

0 = Non Stocked	5 = Pole Timber Medium
1 = Seedling Sapling Poor	6 = Pole Timber Well
2 = Seedling Sapling Medium	7 = Saw Timber Poor
3 = Seedling Sapling Well	8 = Saw Timber Medium
4 = Pole Timber Poor	9 = Saw Timber Well

<b>PU</b>	<b>Acres</b>	<b>PU</b>	<b>Acres</b>
1	13.3	4	23.1
2	15.8	5	13.6
3	18.7	6	27.1

**Jeopardy Music Mix**  
Compartment 121  
111.6 Acres**Legend**

- Against State (Red)
- Payment Unit (Yellow)
- Payment Unit Label
- ▨ Retention Area
- ▤ Nearby Timber Sales
- Stand Boundaries
- Section Corners
- Secondary Forest Road
- Gravel Road
- Intermittent Stream
- Perennial River

**Locator Map**  
1:150,000

0 0.125 0.25 0.5 0.75 1 Miles