



**DEPARTMENT OF NATURAL RESOURCES  
STATE OF MICHIGAN**

**TIMBER SALE PROSPECTUS #6810**

SCHEDULED SALE DATE AND TIME: **3:00 p.m. (local time) on June 24, 2021.**

LOCATION: **NEWBERRY MGMT UNIT, 5666 S STATE HWY M 123, NEWBERRY, MI 49868.**

CONTACT NAME: Keith Magnusson

PHONE NUMBER: (906) 293-3293

PROSPECTUS NOTE: The bidder is advised to inspect the sale area and review the location, estimated volumes, operating costs and contract terms of proposed sales. Please be aware that some landowners may request 60 days or more notice for access across their land.

Notice is hereby given that bids will be received by the Unit Manager, NEWBERRY MANAGEMENT UNIT, for certain timber on the following described lands:

Blind Sucker Mix (42-006-20) / T49N, R11W, SEC. 18, NWSW, S1/2SW.

T49N, R12W, SEC. 13, NENW, S1/2NW, S1/2NE, N1/2SW.

T49N, R12W, SEC. 13, SWSW, N1/2SE, SESE.

T49N, R12W, SEC. 14, E1/2SE.

Luce County, Advertised Price \$98,465.35, 184.7 Acres, Hardwood, Red Pine.

SALE NOTE: The Pine Ridge Trail is an ORV trail and is shown on the Timber Sale Map. See Sale Spec 5.2.39 for additional information.

Trail 8 is a snowmobile trail and is shown on the Timber Sale Map. See Sale Spec. 5.2.41 for restrictions.

A recreation site such as a trail, pathway, or campground is within the sale area or the vicinity. Certain restrictions/specifications may be applicable including time restrictions.

## TIMBER SALE INFORMATION

### Blind Sucker Mix (42-006-20)

T49N, R11W, SEC. 18; T49N, R12W, SEC. 13; T49N, R12W, SEC. 14.  
Luce County (Advertised Price \$98,465.35)

SALE NOTE: The Pine Ridge Trail is an ORV trail and is shown on the Timber Sale Map. See Sale Spec 5.2.39 for additional information.

Trail 8 is a snowmobile trail and is shown on the Timber Sale Map. See Sale Spec. 5.2.41 for restrictions.

A recreation site such as a trail, pathway, or campground is within the sale area or the vicinity. Certain restrictions/specifications may be applicable including time restrictions.

A timber sale contract for this lump sum, sealed bid timber sale will be awarded to the responsible bidder offering the highest sealed bid price. All units of volume listed below were estimated using the T-Sale computer program and our traditional volume equations. Bids must be at or above the following advertised price for each product and species:

<u>PRODUCTS &amp; SPECIES</u>	<u>ESTIMATED UNITS*</u>	<u>ADVERTISED PRICE</u>
Sawtimber		
Paper Birch	11.5 MBF	\$ 27.00 / MBF
Red Maple	62.1 MBF	\$ 71.00 / MBF
Sugar Maple	2.2 MBF	\$ 218.00 / MBF
Yellow Birch	10.4 MBF	\$ 28.00 / MBF
Pulpwood		
Balsam Fir	162 Cords	\$ 9.40 / Cord
Mixed Hardwood	1,242 Cords	\$ 11.95 / Cord
Mixed Spruce	71 Cords	\$ 17.30 / Cord
N. White Cedar	7 Cords	\$ 4.80 / Cord
Red Oak	5 Cords	\$ 17.45 / Cord
Red Pine	1,372 Cords	\$ 46.40 / Cord
White Pine	746 Cords	\$ 15.55 / Cord

\* The total volume is statistically estimated within plus (+) or minus (-) 10.37 percent. There are an estimated 3,810 cords on this timber sale, plus or minus 395 cords at the 95% confidence level. The estimated units are final and not subject to adjustment. Prospective bidders are urged to examine this timber and to make their own estimates of quantity and quality.

### **BOND AND PAYMENT SCHEDULE:**

1. A bond in the amount of \$4,923.27 to insure faithful performance of the conditions of the contract will be deposited by the successful bidder within 21 days of the sale award.
2. Cutting in any sale or unit without the required advance payment would be considered a trespass.
3. Total payment must be paid in advance or according to the following schedule :
  - (a) Ten percent (10%) of the sale value must be paid within 21 days of the sale award.
  - (b) The 10% down payment will be credited towards the first unit cut.
  - (c) Payment for each of the following units must be made before cutting begins in that unit:

<u>PAYMENT UNIT NUMBER</u>	<u>PERCENT OF TOTAL SALE VALUE</u>
01	2.3%
02	6.5%
03	9.0%
04	2.2%
05	2.4%
06	23.8%
07	12.6%
08	5.6%
09	4.5%
10	8.4%
11	22.7%

4. If no cutting takes place, the 10% down payment will not be refunded.
5. Operations on the contract issued will terminate on 12/31/2024.

### **SALE STATISTICS**

**SALE VOLUMES**

VOLUME			STATISTICAL RANGE IN CORDS	
TOTAL CUBIC FEET	TOTAL CORDS	PERCENT ERROR	MINIMUM	MAXIMUM
300,963	3,810	10.37%	3,415	4,205

**VDU VOLUMES**

A VDU is a Volume Determination Unit. Volumes and their associated statistics are calculated at the VDU level and summarized to the sale level. There is often a one to one relationship between a VDU and a Payment Unit, but not always, depending on the cruise design. Refer to the VDU TO PAYMENT UNIT table.

	VOLUME			RANGE IN CORDS	
VDU	TOTAL CUBIC FEET	TOTAL CORDS	PERCENT ERROR	MINIMUM	MAXIMUM
39	37,486	475	21.60%	372	577
40	11,645	147	36.02%	94	200
42	6,462	82	90.53%	8	156
44	49,091	621	19.90%	498	745
46	40,345	511	18.11%	418	603
48	22,468	284	44.01%	159	410
65	22,468	284	27.97%	205	364
66	23,700	300	16.89%	249	351
69	31,458	398	16.72%	332	465
71	49,991	633	23.10%	487	779
79	5,862	74	38.68%	45	103
<b>TOTAL:</b>	<b>300,974</b>	<b>3,810</b>		<b>2,867</b>	<b>4,752</b>

**VDU TO PAYMENT UNIT**

When a VDU is associated with more than one Payment Unit (PU), the VDU volumes are assigned to the PU based on acres of the VDU within the PU.

VDU	VDU ACRES	PU	PU ACRES
39	26.5	2	26.5
40	7.5	1	7.5
42	16.7	4	16.7
44	18.1	6	18.1
46	27.8	11	27.8
48	9.0	10	9.0
65	11.8	9	11.8
66	7.7	7	7.7
69	19.1	8	19.1
71	31.6	3	31.6
79	8.9	5	8.9
<b>TOTAL:</b>	<b>184.7</b>		<b>184.7</b>

**DESCRIPTION OF TIMBER BY PU (PU)**

PU	MARKET GROUP	PRODUCT	QUANTITY	UNIT	ACRES	ADVERTISE PRICE
1	Red Maple	Sawtimber	8.9	MBF	7.5	\$2,222.60
	Sugar Maple		2.2	MBF		
	Yellow Birch		0.6	MBF		
	Balsam Fir	Pulpwood	2	Cords		
	Mixed Hardwood		90	Cords		
	<i>Beech</i>	<i>Sawtimber</i>	<i>0.6</i>	<i>MBF</i>		
	<i>Beech</i>	<i>Pulpwood</i>	<i>5</i>	<i>Cords</i>		
	<i>Red Maple</i>		<i>63</i>	<i>Cords</i>		
	<i>Sugar Maple</i>		<i>18</i>	<i>Cords</i>		
	<i>Yellow Birch</i>		<i>3</i>	<i>Cords</i>		
2	Paper Birch	Sawtimber	4.6	MBF	26.5	\$6,398.90
	Red Maple		17.5	MBF		
	Balsam Fir	Pulpwood	72	Cords		
	Mixed Hardwood		320	Cords		
	<i>American Elm</i>	<i>Sawtimber</i>	<i>2.8</i>	<i>MBF</i>		
	<i>Beech</i>		<i>4.2</i>	<i>MBF</i>		
	<i>American Elm</i>	<i>Pulpwood</i>	<i>13</i>	<i>Cords</i>		
	<i>Beech</i>		<i>24</i>	<i>Cords</i>		
	<i>Paper Birch</i>		<i>97</i>	<i>Cords</i>		
	<i>Red Maple</i>		<i>159</i>	<i>Cords</i>		
	<i>Sugar Maple</i>		<i>6</i>	<i>Cords</i>		
	<i>Yellow Birch</i>		<i>7</i>	<i>Cords</i>		
	Mixed Spruce		9	Cords		
	<i>Black Spruce</i>		9	Cords		
	N. White Cedar		7	Cords		
	White Pine		22	Cords		
3	Paper Birch	Sawtimber	4.8	MBF	31.6	\$8,879.70
	Red Maple		15.1	MBF		
	Yellow Birch		3.4	MBF		
	Balsam Fir	Pulpwood	16	Cords		
	Mixed Hardwood		414	Cords		
	<i>Beech</i>	<i>Sawtimber</i>	<i>1.3</i>	<i>MBF</i>		
	<i>Beech</i>	<i>Pulpwood</i>	<i>36</i>	<i>Cords</i>		
	<i>Paper Birch</i>		<i>56</i>	<i>Cords</i>		
	<i>Red Maple</i>		<i>258</i>	<i>Cords</i>		
	<i>Sugar Maple</i>		<i>6</i>	<i>Cords</i>		
	<i>Yellow Birch</i>		<i>55</i>	<i>Cords</i>		
	Mixed Spruce		25	Cords		
	<i>Black Spruce</i>		25	Cords		
	White Pine		132	Cords		
4	Red Pine	Pulpwood	30	Cords	16.7	\$2,185.05
	White Pine		51	Cords		
5	Mixed Spruce	Pulpwood	3	Cords	8.9	\$2,343.80
	<i>Black Spruce</i>		3	Cords		
	Red Pine		38	Cords		
	White Pine		34	Cords		
6	Mixed Hardwood	Pulpwood	5	Cords	18.1	\$23,397.65
	<i>Red Maple</i>		5	Cords		
	Red Pine		446	Cords		
	White Pine		170	Cords		
7	Red Pine	Pulpwood	252	Cords	7.7	\$12,439.20
	White Pine		48	Cords		
8	Paper Birch	Sawtimber	2.1	MBF	19.1	\$5,473.80
	Red Maple		15.0	MBF		
	Yellow Birch		1.3	MBF		

**DESCRIPTION OF TIMBER BY PU (PU), CON'T**

PU	MARKET GROUP	PRODUCT	QUANTITY	UNIT	ACRES	ADVERTISE PRICE
8 con't	Balsam Fir	Pulpwood	57	Cords		
	Mixed Hardwood		268	Cords		
	Beech	Sawtimber	3.9	MBF		
	Beech	Pulpwood	64	Cords		
	Paper Birch		5	Cords		
	Red Maple		161	Cords		
	Yellow Birch		30	Cords		
	Mixed Spruce		10	Cords		
	White Spruce		10	Cords		
	White Pine		26	Cords		
9	Red Maple	Sawtimber	5.6	MBF	11.8	\$4,442.20
	Yellow Birch		5.1	MBF		
	Balsam Fir	Pulpwood	15	Cords		
	Mixed Hardwood		132	Cords		
	Red Maple		105	Cords		
	Yellow Birch		27	Cords		
	Mixed Spruce		23	Cords		
	Black Spruce		10	Cords		
	White Spruce		13	Cords		
	Red Pine		11	Cords		
	White Pine		82	Cords		
	10	Red Oak	Pulpwood	5		
Red Pine			125	Cords		
White Pine			155	Cords		
11	Mixed Hardwood	Pulpwood	13	Cords	27.8	\$22,384.95
	Paper Birch		9	Cords		
	Red Maple		4	Cords		
	Mixed Spruce		1	Cords		
	Black Spruce		1	Cords		
	Red Pine		470	Cords		
	White Pine		26	Cords		
TOTAL:			86.2	MBF		
TOTAL:			3,605	Cords		

## **Sale Specific Conditions & Requirements**

**Sale Name: Blind Sucker Mix**

**Sale Number: 42-006-20 Seq#: 1**

### **1 - Sale Area**

#### **1.2 - Boundaries**

##### **1.2.1 - Painted boundaries (9/19)**

The sale boundary and Payment Unit boundaries are marked and identified by red paint. Exterior sale boundary lines against state are marked with red paint. Interior Payment Unit boundaries are marked with red paint. The interior boundary trees can be cut when all surrounding units have been paid for.

### **2 - Timber Specifications**

#### **2.1 - Included Timber**

##### **2.1.1 - Clearcut unit(s) with unmerchantable trees (6/14)**

Within Payment Unit(s) 5 - 7, 10, and 11, cut all trees that are two (2) inches or more at DBH.

##### **2.1.2 - Clearcut unit(s) w/o unmerchantable trees (8/11)**

Within Payment Unit(s) 2, 3, 8, and 9, cut all trees which meet minimum piece specifications in 2.2 Utilization except hemlock, oak, and white pine greater than 20 inches diameter. Some hemlock may be harvested where needed for operability. See spec 2.1.9.

##### **2.1.3 - Cut tree marked unit(s) (12/08)**

Within Payment Unit(s) 4, all trees are designated for cutting when marked with orange paint above and below stump height, regardless of merchantability.

##### **2.1.5 - Overstory removal unit(s) (8/11)**

Within Payment Unit(s) 1, all trees which meet minimum piece specifications in 2.2 Utilization, are designated for cutting except hemlock, white pine, and oak.

##### **2.1.9 - Harvest exception (12/08)**

Do not cut any hemlock trees in Payment Units 2, 3, 8 & 9 other than those that are necessary to remove in order to operate within the sale area. Every effort must be made to preserve the existing hemlock and to leave an intact stand upon sale completion. All cut hemlock shall be piled separately by products and scaled in the woods unless other scaling arrangements are agreed to by the Unit Manager or his/her representative. Stumpage price for hemlock shall be \$50.00 per cord for pulpwood and \$100.00 per cord for and sawlogs.

##### **2.1.11 - Description of timber note (2/04)**

Note that there are red and white pine trees of sawlog size in sale. All red and white pine were cruised as pulp.

#### **2.2 - Utilization**

##### **2.2.3 - Stump heights (4/07)**

Stump heights within Payment Unit(s) 4 - 7, 10, and 11 shall not exceed 6 inches for all trees. This is to facilitate planting operations. A written waiver of this requirement may be obtained if wet summer weather makes winter logging necessary.

### **3 - Payments**

#### **3.3 - Pre-measured Sales**

##### **3.3.4 - Dividing payment units (7/14)**

Payment Unit(s) 3, 6, 7 & 11 may be divided at the request of the Purchaser and upon approval of the Unit Manager.

Dividing Payment Units is a contract modification which requires a Timber Sale Contract Amendment. There will be only one division per Payment Unit.

### **4 - Transportation**

## 4.1 - Construction

### 4.1.12 - No new roads (1/12)

No new roads will be permitted in any Payment Unit. All operations are limited to existing roads. Skid trails and back in spurs only will be allowed.

## 4.2 - Maintenance

### 4.2.5 - Two wheel drive condition (2/04)

All existing trail roads on and adjacent to the sale area must be passable by two-wheel drive traffic for the duration of the sale.

## 5 - Operations

### 5.2 - Conduct of Operations

#### 5.2.1 - Slash

##### 5.2.1.2 - Slash Removal

###### 5.2.1.2.1 - Slash removal, right-of-way (9/16)

All slash must be removed at least 10 feet from the cleared right-of-way of existing forest roads.

###### 5.2.1.8 - Slash height (12/08)

No slash or tree tops may exceed 24 inches in height.

#### 5.2.2 - Hazard Trees/Snags

##### 5.2.2.1 - Den trees (10/16)

Obvious hollow and/or den trees shall be protected and left standing unless they are a safety hazard.

#### 5.2.3 - Operating Restrictions

##### 5.2.3.3 - Bark slippage restriction (3/09)

Within Payment Unit(s) 4, unless changed by written agreement, cutting and skidding are not permitted during the period of April 15 to July 15. This restriction is because of bark slippage.

##### 5.2.3.6 - Bark beetle restriction (12/08)

In the event drought creates a high risk of pine bark beetle infestation, pine is not to be cut during the period March 1 through July 1, unless all portions of trees greater than two inches in diameter are removed from the sale area, reduced to chips, or treated to the satisfaction of the Unit Manager or his/her representative, within fifteen days of being severed from the stump. Pine log decks, pulpwood piles and treetops that are piled for chipping in the fall or winter within a 1/4 mile of susceptible sites must be removed before March 15. Residual slash must not be placed in piles or rows and must be spread over the site for quick drying. The Department of Natural Resources will exercise this specification if the risk of damage warrants.

##### 5.2.32 - Decking/landing restoration (9/13)

All decking and landing areas must have the surface area restored to a condition equal to or better than before. This is to ensure the proper regeneration of the stand. Wood debris, chips, and "cookies" from trimmings must be removed or scattered away from landing and loading areas and may not be windrowed on the edge.

##### 5.2.38 - No decking against live trees (2/04)

Cut products may not be decked against unmarked or designated leave trees.

##### 5.2.39 - ORV trail/route protection (4/18)

The Pine Ridge Trail is an ORV trail and is shown on the Timber Sale Map. Do not cut trees or damage posts with orange ORV markers. All stumps within 5 feet of the trail must be cut flush with the ground. Maintain a 20-foot-wide slash, debris, and rut free zone daily using the ORV trail or route as the centerline. Do not run equipment down the ORV trail or route.

##### 5.2.41 - Snowmobile trail protection (9/11)

Trail 8 is a snowmobile trail and is shown on the Timber Sale Map. Do not cut or damage posts with orange trail markers or traffic control signs. If the trail is used, it must be maintained and restored to a condition equal to or better than before the

sale. If the trail road is to be used for hauling during the snowmobile season, then a snow-covered base must be left on the trail. Maintain a 20-foot-wide slash, debris, and rut free zone daily using the snowmobile trail as the centerline.

#### 5.4 - Soil Protection

##### 5.4.1 - Rutting restriction, general (7/16)

Operations are to cease immediately if equipment and weather conditions result in rutting of roads and/or skid trails which is 12 inches or greater in depth and 50 feet in length. The Unit Manager or his/her representative may restrict hauling and/or skidding if ruts exceed the specified depth. With the Unit Manager or his/her representative's approval, the Purchaser may return to the area when the risk of rutting has decreased.

#### 5.8 - Protection of Endangered Species

##### 5.8.5 - Protection of raptor nests (3/13)

All trees with raptor nests will be protected if found during harvesting operations. Notification will be made to the Unit Manager or his/her representative who will notify the Wildlife Biologist so an on-site evaluation and recommendation can be made, if necessary.

### 6 - Safety and Fire Prevention

#### 6.2 - Signing

##### 6.2.1 - Road posting (9/09)

The Purchaser is responsible for posting and maintaining caution signs on County Road 410 West, 433, and 378 prior to beginning operations. The road must be posted 200 feet from the Sale Area to warn of logging activity and truck traffic. Signs must be removed when harvest operations are suspended or completed. The Purchaser will provide these signs.

##### 6.2.2 - Snowmobile trail posting (8/09)

The Purchaser is responsible for posting and maintaining caution signs on Trail 8 and the County Roads that serve as snowmobile trails in the winter. prior to beginning operations during the snowmobile season (approximately December 1 to March 31). The trail must be posted to warn of logging activity and truck traffic. Signs must be removed when harvest operations are suspended or completed. The Purchaser will provide these signs.

##### 6.2.3 - Recreational trail posting (2/10)

The Purchaser is responsible for posting and maintaining caution signs on Pine Ridge Trail prior to beginning operations. The trail must be posted 200 feet from the Sale Area to warn of logging activity and truck traffic at both ends of the trail. Signs must be removed when harvest operations are suspended or completed. The DNR will provide these signs.





## TIMBER SALE MAP

This information provided by authority of Part 525, 1994 PA 451, as amended.

Forest Management Unit		County	Mapped By		Cruised By		Date	Page of
Newberry		Luce	Livemore		Grossman Forestry		7/18/2020	1   1
Township		Section(s) and Subdivision(s) Section 13: SWSW, N/2SE, SESE Section 14: E/2SE						1:15,840
49N		Section 18: NWSW, S/2SW Section 13: NENW, S/2NW, S/2NE, N/2SW						
Range		Scale						
11W / 12W								

### Cover Type

A = Aspen  
B = Paper Birch  
C = Cedar  
D = Tired Bog  
E = Swamp Hardwoods  
F = Spruce Fir  
G = Grass  
H = Hemlock  
J = Jack Pine  
L = Lowland Mixed  
LM = Lowland Mixed  
M = Mpl. Bch. Brch  
MC = Mixed Conifer  
MD = Mixed Deciduous  
N = Marsh  
O = Oak  
P = Lowland Poplar  
Q = Mixed Swamp Conifer  
R = Red Pine  
S = Black Spruce  
T = Tamarack  
U = Upland Brush  
UM = Upland Mixed  
V = Bog or Marsh  
W = White Pine  
X = Non Stocked  
Z = Water

### Density

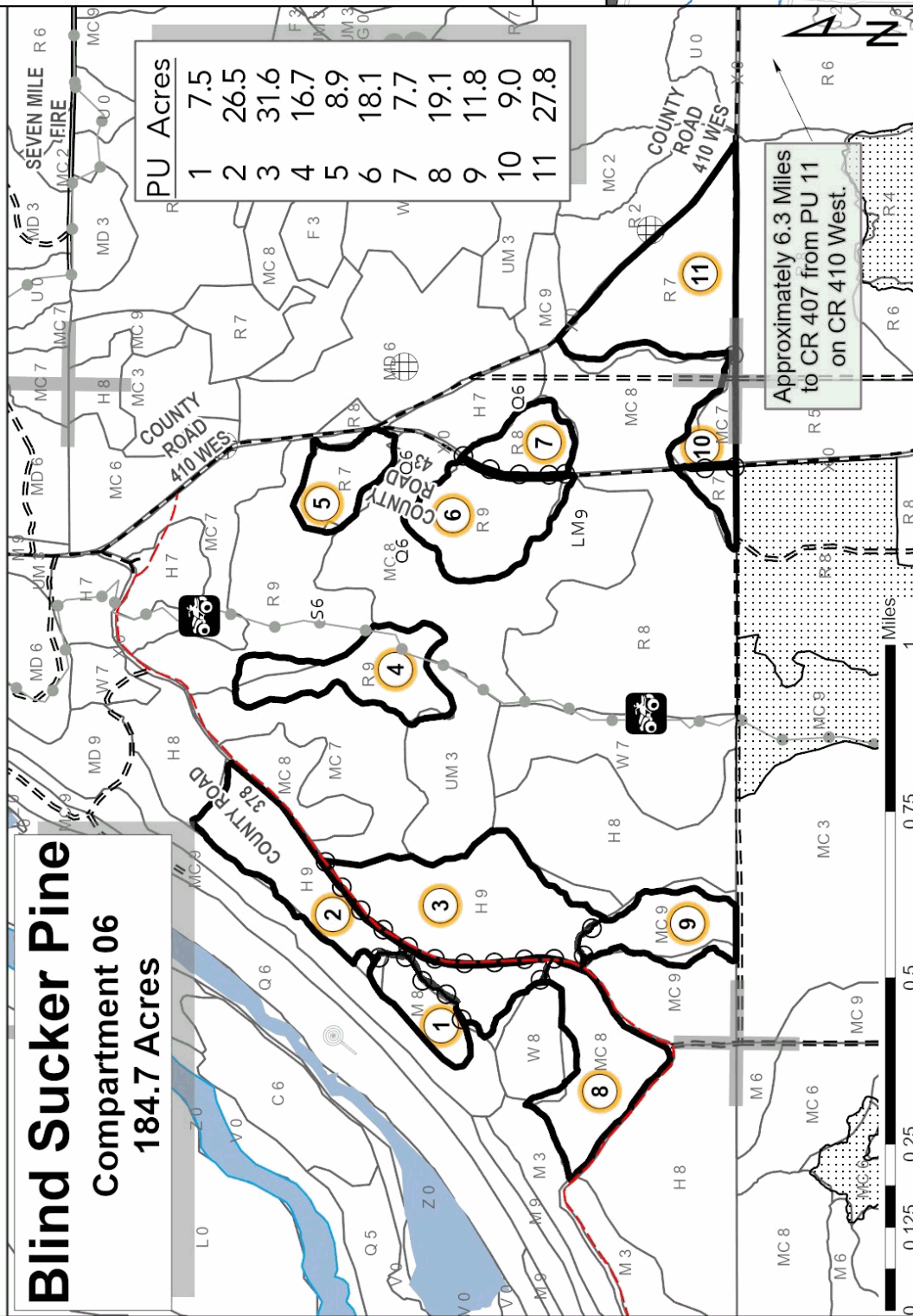
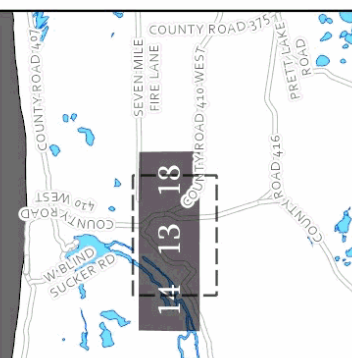
0 = Non Stocked  
1 = Seeding Sapling Poor  
2 = Seeding Sapling Medium  
3 = Seeding Sapling Well  
4 = Pole Timber Poor  
5 = Pole Timber Medium  
6 = Pole Timber Well  
7 = Saw Timber Poor  
8 = Saw Timber Medium  
9 = Saw Timber Well

## Blind Sucker Pine Compartment 06 184.7 Acres

PU Acres	
1	7.5
2	26.5
3	31.6
4	16.7
5	8.9
6	18.1
7	7.7
8	19.1
9	11.8
10	9.0
11	27.8

- Against State (Red)
- Payment Unit (Red)
- Payment Unit Label
- ORV Trails
- Recreational Trail
- Section Numbers
- Section Corners
- Berns
- Primary Forest Road
- Secondary Forest Road
- Forest Access Route
- Paved Road
- Gravel Road
- County Road - Seasonal
- Private
- Perennial River
- Lakes and Rivers
- DNR - Management Access
- Temporary Management Access
- Retention Area
- Nearby Timber Sale

Locator Map: 1:200,000  
[ ] - Main Map Extent



Approximately 6.3 Miles  
to CR 407 from PU 11  
on CR 410 West.