



**DEPARTMENT OF NATURAL RESOURCES
STATE OF MICHIGAN**

TIMBER SALE PROSPECTUS #6977

SCHEDULED SALE DATE AND TIME: 10:00 a.m. (local time) on December 6, 2021.

LOCATION: SAULT STE MARIE MGMT UNIT, P.O. BOX 798, 4131 S. M-129, SAULT STE MARIE, MI 49783.

CONTACT NAME: Josh Brinks

PHONE NUMBER: (906) 203-0210

PROSPECTUS NOTE: The bidder is advised to inspect the sale area and review the location, estimated volumes, operating costs and contract terms of proposed sales. Please be aware that some landowners may request 60 days or more notice for access across their land.

Notice is hereby given that bids will be received by the Unit Manager, SAULT STE MARIE MANAGEMENT UNIT, for certain timber on the following described lands:

Dickenson Creek Mix (45-003-21) / T41N, R07E, SEC. 14, N1/2SE.

T41N, R07E, SEC. 15, SWNW,NWSW.

T41N, R07E, SEC. 16, SENW,SENE,NESW,S1/2SW,NESE.

T41N, R07E, SEC. 17, SENW,N1/2SW,SWSW.

T41N, R07E, SEC. 18, SWNE,N1/2SE,SESE.

T41N, R07E, SEC. 21, NW.

Chippewa County, Advertised Price \$63,617.10, 221.3 Acres, Aspen, Spruce/Fir/Tamarack.

SALE NOTE: All units of volume listed for this sale were estimated using the Inventory Manager computer program and the new Michigan taper model.

A recreation site such as a trail, pathway, or campground is within the sale area or the vicinity.
Certain restrictions/specifications may be applicable including time restrictions.

TIMBER SALE INFORMATION

Dickenson Creek Mix (45-003-21)

T41N, R07E, SEC. 14; T41N, R07E, SEC. 15; T41N, R07E, SEC. 16; T41N, R07E, SEC. 17; T41N, R07E, SEC. 18; T41N, R07E, SEC. 21.

SALE NOTE: All units of volume listed for this sale were estimated using the Inventory Manager computer program and the new Michigan taper model.

A recreation site such as a trail, pathway, or campground is within the sale area or the vicinity. Certain restrictions/specifications may be applicable including time restrictions.

A timber sale contract for this lump sum, sealed bid timber sale will be awarded to the responsible bidder offering the highest sealed bid price. All units of volume listed below were estimated using the Inventory Manager computer program and the new Michigan taper model. Bids must be at or above the following advertised price for each product and species:

<u>PRODUCTS & SPECIES</u>	<u>ESTIMATED UNITS*</u>	<u>ADVERTISED PRICE</u>
Sawtimber		
Beech	1.2 MBF	\$ 16.00 / MBF
Paper Birch	4.9 MBF	\$ 17.00 / MBF
Red Maple	0.6 MBF	\$ 51.00 / MBF
Sugar Maple	107.6 MBF	\$ 164.00 / MBF
White Ash	8.1 MBF	\$ 20.00 / MBF
Yellow Birch	0.7 MBF	\$ 21.00 / MBF
Pulpwood		
Balsam Fir	477 Cords	\$ 4.55 / Cord
Mixed Aspen	2,650 Cords	\$ 8.90 / Cord
Mixed Hardwood	293 Cords	\$ 6.45 / Cord
Mixed Spruce	740 Cords	\$ 9.35 / Cord
N. White Cedar	1,108 Cords	\$ 2.50 / Cord
Paper Birch	79 Cords	\$ 5.05 / Cord
Red Pine	266 Cords	\$ 25.40 / Cord
White Pine	171 Cords	\$ 6.85 / Cord

* The total volume is statistically estimated within plus (+) or minus (-) 4.50 percent. There are an estimated 5,997 cords on this timber sale, plus or minus 270 cords at the 95% confidence level. The estimated units are final and not subject to adjustment. Prospective bidders are urged to examine this timber and to make their own estimates of quantity and quality.

BOND AND PAYMENT SCHEDULE:

1. A bond in the amount of \$4,453.20 to insure faithful performance of the conditions of the contract will be deposited by the successful bidder within 21 days of the sale award.
2. Cutting in any sale or unit without the required advance payment would be considered a trespass.
3. Total payment must be paid in advance or according to the following schedule :
 - (a) Ten percent (10%) of the sale value must be paid within 21 days of the sale award.
 - (b) The 10% down payment will be credited towards the first unit cut.
 - (c) Payment for each of the following units must be made before cutting begins in that unit:

<u>PAYMENT UNIT NUMBER</u>	<u>PERCENT OF TOTAL SALE VALUE</u>
01	17.8%
02	14.8%
03	2.0%
04	7.0%
05	24.1%
06	6.7%
07	15.0%
08	12.6%

4. If no cutting takes place, the 10% down payment will not be refunded.
5. Operations on the contract issued will terminate on 06/30/2025.

SALE STATISTICS

Volumes were calculated in cubic feet using the Michigan taper model. Cubic foot volume includes all wood inside bark for the product indicated. For display purposes, cubic feet were converted to cords and MBF using a simple conversion factor, e.g. 79 cubic feet per cord and 185 cubic feet per MBF. The cubic foot volumes are precise; the cords and MBF volumes are not. Cubic foot volume cannot be directly converted to cords or boards with precision.

SALE VOLUMES

The total estimated sale volume may not equal the sum of the species/products due to the nature of statistical calculations associated with double sampling methodology.

VOLUME			STATISTICAL RANGE IN CORDS	
TOTAL CUBIC FEET	TOTAL CORDS	PERCENT ERROR	MINIMUM	MAXIMUM
473,796	5,997	4.50%	5,727	6,268

VDU VOLUMES

A VDU is a Volume Determination Unit. Volumes and their associated statistics are calculated at the VDU level and summarized to the sale level. There is often a one to one relationship between a VDU and a Payment Unit, but not always, depending on the cruise design. Refer to the VDU TO PAYMENT UNIT table.

	VOLUME			RANGE IN CORDS	
VDU	TOTAL CUBIC FEET	TOTAL CORDS	PERCENT ERROR	MINIMUM	MAXIMUM
6	172,360	2,182	6.97%	2,030	2,334
7	11,173	141	19.69%	114	169
36	213,356	2,701	7.55%	2,497	2,905
64	8,822	112	14.34%	96	128
94	28,908	366	19.22%	296	436
115	23,234	294	14.39%	252	336
641	18,890	239	14.21%	205	273
TOTAL:	476,742	6,035		5,488	6,581

VDU TO PAYMENT UNIT

When a VDU is associated with more than one Payment Unit (PU), the VDU volumes are assigned to the PU based on acres of the VDU within the PU.

VDU	VDU ACRES	PU	PU ACRES
6	69.4	1	37.9
		2	31.5
7	8.4	3	8.4
36	79.6	7	43.1
		8	36.5
64	14.7	5	14.7
94	21.0	6	21.0
115	16.1	4	16.1
641	12.1	5	12.1
TOTAL:	221.3		221.3

DESCRIPTION OF TIMBER BY PU (PU)

PU	MARKET GROUP	PRODUCT	QUANTITY	UNIT	ACRES	ADVERTISE PRICE
1	Paper Birch	Sawtimber	2.1	MBF	37.9	\$11,327.10
	Balsam Fir	Pulpwood	113	Cords		
	Mixed Aspen		444	Cords		
	<i>B. T. Aspen</i>		7	Cords		
	<i>Balsam Poplar</i>		16	Cords		
	<i>Quaking Aspen</i>		421	Cords		
	Mixed Hardwood		20	Cords		
	<i>Red Maple</i>		14	Cords		
	<i>Sugar Maple</i>		6	Cords		
	Mixed Spruce		203	Cords		
	<i>White Spruce</i>		203	Cords		
	N. White Cedar		149	Cords		
	Paper Birch		21	Cords		
	Red Pine		145	Cords		
	White Pine		93	Cords		
2	Paper Birch	Sawtimber	1.7	MBF	31.5	\$9,415.80
	Balsam Fir	Pulpwood	94	Cords		
	Mixed Aspen		368	Cords		
	<i>B. T. Aspen</i>		5	Cords		
	<i>Balsam Poplar</i>		13	Cords		
	<i>Quaking Aspen</i>		350	Cords		
	Mixed Hardwood		17	Cords		
	<i>Red Maple</i>		12	Cords		
	<i>Sugar Maple</i>		5	Cords		
	Mixed Spruce		168	Cords		
	<i>White Spruce</i>		168	Cords		
	N. White Cedar		124	Cords		
	Paper Birch		17	Cords		
	Red Pine		121	Cords		
	White Pine		78	Cords		
3	Red Maple	Sawtimber	0.6	MBF	8.4	\$1,286.70
	Sugar Maple		0.6	MBF		
	Balsam Fir	Pulpwood	18	Cords		
	Mixed Aspen		112	Cords		
	<i>Balsam Poplar</i>		4	Cords		
	<i>Quaking Aspen</i>		108	Cords		
	Mixed Hardwood		5	Cords		
	<i>Black Ash</i>		1	Cords		
	<i>Red Maple</i>		3	Cords		
	<i>Sugar Maple</i>		1	Cords		
	Mixed Spruce		5	Cords		
	<i>White Spruce</i>		5	Cords		
4	Paper Birch	Sawtimber	1.1	MBF	16.1	\$4,478.40
	Sugar Maple		13.4	MBF		
	White Ash		8.1	MBF		
	Mixed Aspen	Pulpwood	170	Cords		
	<i>Balsam Poplar</i>		74	Cords		
	<i>Quaking Aspen</i>		96	Cords		
	Mixed Hardwood		54	Cords		
	<i>Beech</i>		2	Cords		
	<i>Black Ash</i>		3	Cords		
	<i>Sugar Maple</i>		43	Cords		
	<i>White Ash</i>		6	Cords		
	Mixed Spruce		25	Cords		
	<i>White Spruce</i>		25	Cords		

DESCRIPTION OF TIMBER BY PU (PU), CON'T

PU	MARKET GROUP	PRODUCT	QUANTITY	UNIT	ACRES	ADVERTISE PRICE
4 con't	Paper Birch	Pulpwood	1	Cords		
5	Beech	Sawtimber	1.2	MBF	26.8	\$15,285.50
	Sugar Maple		86.1	MBF		
	Yellow Birch		0.7	MBF		
	Mixed Aspen	Pulpwood	1	Cords		
	<i>Balsam Poplar</i>		1	Cords		
	Mixed Hardwood		174	Cords		
	<i>Beech</i>		5	Cords		
	<i>Ironwood</i>		7	Cords		
	<i>Sugar Maple</i>		161	Cords		
	<i>Yellow Birch</i>		1	Cords		
6	Sugar Maple	Sawtimber	7.5	MBF	21.0	\$4,271.45
	Balsam Fir	Pulpwood	4	Cords		
	Mixed Aspen		243	Cords		
	<i>Balsam Poplar</i>		23	Cords		
	<i>Quaking Aspen</i>		220	Cords		
	Mixed Hardwood		16	Cords		
	<i>Beech</i>		6	Cords		
	<i>Ironwood</i>		4	Cords		
	<i>Sugar Maple</i>		6	Cords		
	Mixed Spruce		81	Cords		
	<i>White Spruce</i>		81	Cords		
7	Balsam Fir	Pulpwood	134	Cords	43.1	\$9,513.50
	Mixed Aspen		711	Cords		
	<i>B. T. Aspen</i>		53	Cords		
	<i>Balsam Poplar</i>		35	Cords		
	<i>Quaking Aspen</i>		623	Cords		
	Mixed Hardwood		4	Cords		
	<i>Red Maple</i>		4	Cords		
	Mixed Spruce		140	Cords		
	<i>Black Spruce</i>		53	Cords		
	<i>White Spruce</i>		87	Cords		
	N. White Cedar		452	Cords		
	Paper Birch		22	Cords		
8	Balsam Fir	Pulpwood	114	Cords	36.5	\$8,038.65
	Mixed Aspen		601	Cords		
	<i>B. T. Aspen</i>		44	Cords		
	<i>Balsam Poplar</i>		30	Cords		
	<i>Quaking Aspen</i>		527	Cords		
	Mixed Hardwood		3	Cords		
	<i>Red Maple</i>		3	Cords		
	Mixed Spruce		118	Cords		
	<i>Black Spruce</i>		45	Cords		
	<i>White Spruce</i>		73	Cords		
	N. White Cedar		383	Cords		
	Paper Birch		18	Cords		
TOTAL:			123.1	MBF		
TOTAL:			5,784	Cords		

Sale Specific Conditions & Requirements

Sale Name: Dickenson Creek Mix

Sale Number: 45-003-21 Seq#: 1

1 - Sale Area

1.2 - Boundaries

1.2.1 - Painted boundaries (9/19)

The sale boundary and Payment Unit boundaries are marked and identified by blue, red, and yellow paint. Exterior sale boundary lines against private property are marked with blue paint. Exterior sale boundary lines against state are marked with red paint. Interior Payment Unit boundaries are marked with yellow paint. Retention patches are marked with red paint, no harvesting activities may occur within these areas. The painted boundary line trees are not Included Timber and are to be protected unless marked with orange paint. Yellow painted trees designating an interior Payment Unit boundary are only to be cut when all surrounding Payment Units have been paid.

2 - Timber Specifications

2.1 - Included Timber

2.1.1 - Clearcut unit(s) with unmerchantable trees (6/14)

Within Payment Unit(s) 1-4, 5b, and 6, cut all trees that are two (2) inches or more at DBH. Within Payment Units 3 and 4, do not cut oak, cedar, pine, hemlock, or yellow birch. Within Payment Unit 6, do not cut oak, hemlock, pine, yellow birch, cedar, and sugar maple except those maples marked with orange paint.

2.1.7 - Leave tree marked unit(s) (6/14)

Within Payment Unit(s) 5a, cut all trees that are two (2) inches or more at DBH, except trees marked with green paint. Within Payment Unit 7 and 8, cut all trees that are two (2) inches or more at DBH, except those trees marked with blue paint and do not cut any oak, pine, hemlock, or yellow birch.

3 - Payments

3.3 - Pre-measured Sales

3.3.4 - Dividing payment units (7/14)

Payment Unit(s) 1-8 may be divided at the request of the Purchaser and upon approval of the Unit Manager. Dividing Payment Units is a contract modification which requires a Timber Sale Contract Amendment. There will be only one division per Payment Unit.

4 - Transportation

4.1 - Construction

4.1.6 - Road construction (1/09)

Construction of new roads or improvements of existing roads shall be done in such a way as to minimize the environmental and visual impacts. Merchantable trees shall be cut and utilized unless otherwise directed. Non-merchantable trees shall be severed and laid flat on the ground. Slash shall be scattered, and not left in windrows and kept a minimum of 10 feet back from the road edge. Stumps shall be set upright, not left on edge, and be moved at least 10 feet away from the road edge. Disturbed soil shall be feathered into the woods and not left in berms or windrows.

4.1.7 - Road closure (10/11)

All new roads built into the sale must be blocked to vehicle traffic upon completion of the sale. Overgrown roads that are reopened shall be considered new roads. Some existing roads may also need to be closed, see the Timber Sale Map for locations. In general, this will require constructing a four (4') foot high berm of stumps and logs covered with earth. Stumps and brush must be placed along the remainder of the trail. These roads must be rendered impassable to cars and trucks. All stumps from road building and landing construction must be reserved to block any newly constructed roads upon completion of the sale. These stumps must be scattered along the road system to prohibit vehicular movement. Contact the sale administrator for specific details of design and placement.

4.2 - Maintenance

4.2.4 - Grading (10/16)

For completion of the sale, state forest roads must be graded. In general, this will require a road grader or bulldozer to shape up the roads after forest products have been hauled off site. This includes cleaning of drainage areas, grading, crowning and filling with gravel, if necessary. The grading equipment to be used must be approved by the Unit Manager or his/her representative.

4.2.5 - Two wheel drive condition (2/04)

All existing trail roads on and adjacent to the sale area must be passable by two-wheel drive traffic for the duration of the sale.

5 - Operations

5.2 - Conduct of Operations

5.2.2 - Hazard Trees/Snags

5.2.2.1 - Den trees (10/16)

Obvious hollow and/or den trees shall be protected and left standing unless they are a safety hazard.

5.2.3 - Operating Restrictions

5.2.3.1 - Operating restrictions (9/11)

Within Payment Unit(s) 1-7, unless changed by written agreement, cutting, skidding, and hauling are limited to the period of December 1 to March 31. This restriction is because deer yard.

5.2.32 - Decking/landing restoration (9/13)

All decking and landing areas must have the surface area restored to a condition equal to or better than before. This is to ensure the proper regeneration of the stand. Wood debris, chips, and "cookies" from trimmings must be removed or scattered away from landing and loading areas and may not be windrowed on the edge.

5.2.38 - No decking against live trees (2/04)

Cut products may not be decked against unmarked or designated leave trees.

5.2.41 - Snowmobile trail protection (9/11)

The snowmobile trail is shown on the Timber Sale Map. Do not cut or damage posts with orange trail markers or traffic control signs. The snowmobile trail may not be used for any timber sale operations from December 1 to March 31. The only portion of trail that may be used is from Bass Cove Road to Clear Lake Road.

5.8 - Protection of Endangered Species

5.8.5 - Protection of raptor nests (3/13)

All trees with raptor nests will be protected if found during harvesting operations. Notification will be made to the Unit Manager or his/her representative who will notify the Wildlife Biologist so an on-site evaluation and recommendation can be made, if necessary.

6 - Safety and Fire Prevention

6.2 - Signing

6.2.1 - Road posting (10/20)

The Purchaser is responsible for posting and maintaining caution signs on Bass Cove Road prior to beginning operations. The road must be posted at appropriate distances from the Sale Area to warn of logging activity and truck traffic. Signs must be removed when harvest operations are suspended or completed. The Purchaser will provide these signs.

6.2.2 - Snowmobile trail posting (10/20)

The Purchaser is responsible for posting and maintaining caution signs on the snowmobile trail prior to beginning operations during the snowmobile season (approximately December 1 to March 31). The trail must be posted at appropriate distances from the Sale Area to warn of logging activity and truck traffic. Signs must be removed when harvest operations are suspended or completed. The Purchaser will provide these signs.

6.2.3 - Recreational trail posting (10/20)

The Purchaser is responsible for posting and maintaining caution signs on the ORV trail prior to beginning operations. The trail must be posted at appropriate distances from the Sale Area to warn of logging activity and truck traffic at both ends of the trail. Signs must be removed when harvest operations are suspended or completed. The Purchaser will provide these signs.

**TIMBER SALE MAP***This information provided by authority of Part 525, 1994 PA 451, as amended.*

Sale Number	Year
45-003-21	2021

Forest Management Unit Sault Ste. Marie	County Chippewa	Mapped By Brinks	Date 09/23/21	Page 3	of 3
Cruised By UMLMWS					

Township T41N	Range R07E	Section(s) and Subdivision(s) Sec. 14- N1/2SE	Scale 1:15,840 1 inch= 1/4 mile
------------------	---------------	--	------------------------------------

Cover Type

A = Aspen	H = Hemlock	N = Marsh	U = Upland Brush
B = Paper Birch	J = Jack Pine	O = Oak	UM = Upland Mixed
C = Cedar	L = Lowland Brush	P = Lowland Poplar	V = Bog or Marsh
D = Treed Bog	LM = Lowland Mixed	Q = Mixed Swamp Conifer	W = White Pine
E = Swamp Hdwoods	M = Mpl, Bch, Brch	R = Red Pine	X = Non Stocked
F = Spruce Fir	MC = Mixed Conifer	S = Black Spruce	Z = Water
G = Grass	MD = Mixed Deciduous	T = Tamarack	

Density

0 = Non Stocked	5 = Pole Timber Medium
1 = Seedling Sapling Poor	6 = Pole Timber Well
2 = Seedling Sapling Medium	7 = Saw Timber Poor
3 = Seedling Sapling Well	8 = Saw Timber Medium
4 = Pole Timber Poor	9 = Saw Timber Well

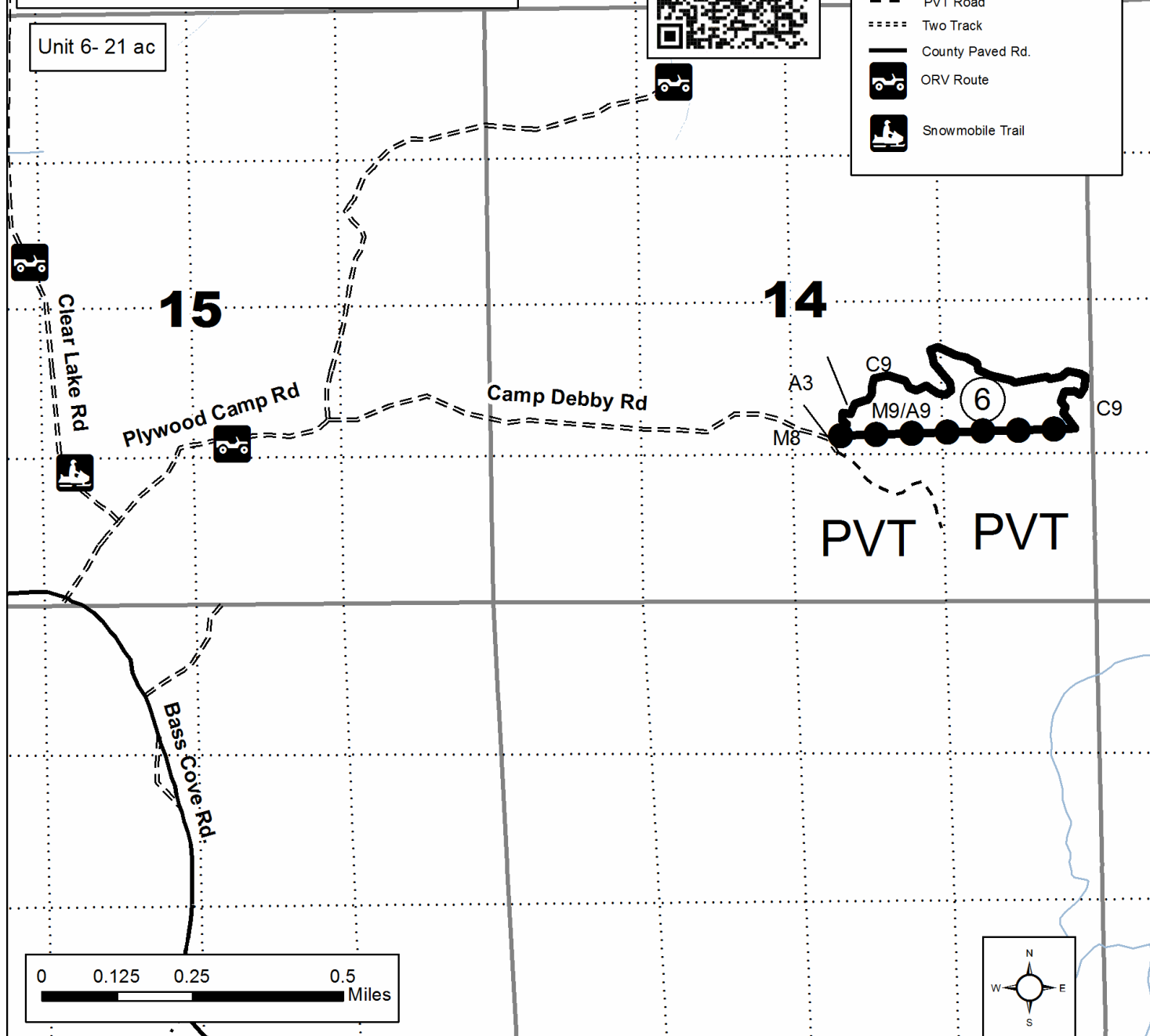
Dickenson Creek Mix

221.3 acres

Unit 6- 21 ac

**Legend**

- Against State (Red)
- Against Private (Blue)
- - - PVT Road
- ===== Two Track
- County Paved Rd.
- ORV Route
- Snowmobile Trail



**TIMBER SALE MAP***This information provided by authority of Part 525, 1994 PA 451, as amended.*

Sale Number	Year
45-003-21	2021

Forest Management Unit	County	Mapped By	Date	Page	of
Sault Ste. Marie	Chippewa	Brinks	9/23/21	1	3
		Cruised By			
		UMLMWS			

Township	Range	Section(s) and Subdivision(s)	Scale
T41N	R07E	Sec. 17- SENW, NESW, W1/2SW Sec. 18- SWNE, N1/2SE, SESE	1:15,840 1 inch= 1/4 mile

Cover Type

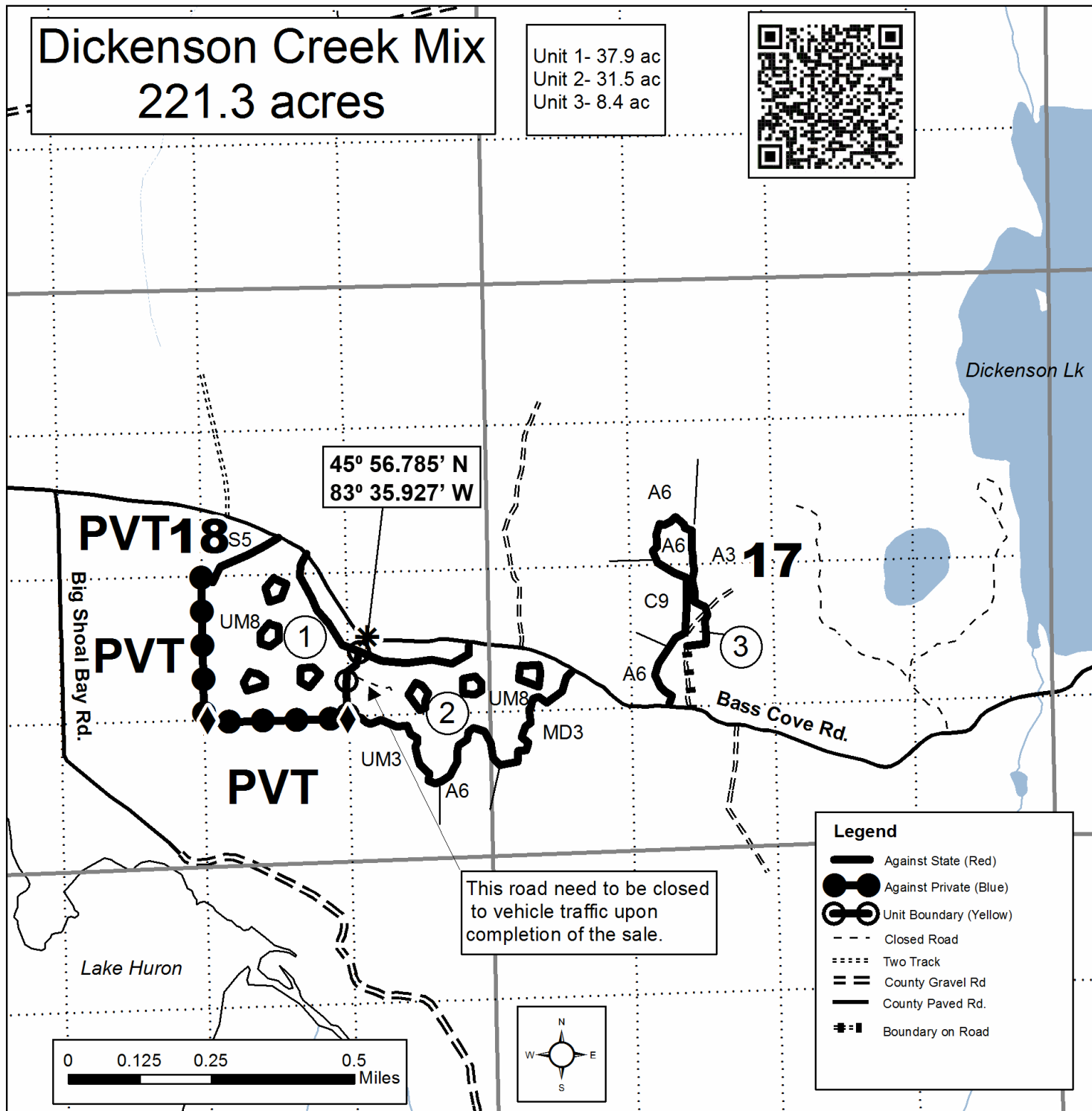
A = Aspen	H = Hemlock	N = Marsh	U = Upland Brush
B = Paper Birch	J = Jack Pine	O = Oak	UM = Upland Mixed
C = Cedar	L = Lowland Brush	P = Lowland Poplar	V = Bog or Marsh
D = Treed Bog	LM = Lowland Mixed	Q = Mixed Swamp Conifer	W = White Pine
E = Swamp Hdwoods	M = Mpl, Bch, Brch	R = Red Pine	X = Non Stocked
F = Spruce Fir	MC = Mixed Conifer	S = Black Spruce	Z = Water
G = Grass	MD = Mixed Deciduous	T = Tamarack	

Density

0 = Non Stocked	5 = Pole Timber Medium
1 = Seedling Sapling Poor	6 = Pole Timber Well
2 = Seedling Sapling Medium	7 = Saw Timber Poor
3 = Seedling Sapling Well	8 = Saw Timber Medium
4 = Pole Timber Poor	9 = Saw Timber Well

Dickenson Creek Mix 221.3 acres

Unit 1- 37.9 ac
Unit 2- 31.5 ac
Unit 3- 8.4 ac



**TIMBER SALE MAP**

This information provided by authority of Part 525, 1994 PA 451, as amended.

Sale Number	Year
45-003-21	2021

Forest Management Unit Sault Ste. Marie	County Chippewa	Mapped By Brinks	Date 9/23/2021	Page 2	of 3
Cruised By UMLMWS					

Township T41N	Range R07E	Section(s) and Subdivision(s) Sec 15- SWNW, NWSW Sec 16- SENW, NESW, SENE, NESE, S1/2SW Sec 23- NW	Scale 1:15,840 1 inch= 1/4 mile
------------------	---------------	---	------------------------------------

Cover Type

A = Aspen	H = Hemlock	N = Marsh	U = Upland Brush
B = Paper Birch	J = Jack Pine	O = Oak	UM = Upland Mixed
C = Cedar	L = Lowland Brush	P = Lowland Poplar	V = Bog or Marsh
D = Treed Bog	LM = Lowland Mixed	Q = Mixed Swamp Conifer	W = White Pine
E = Swamp Hdwoods	M = Mpl, Bch, Brch	R = Red Pine	X = Non Stocked
F = Spruce Fir	MC = Mixed Conifer	S = Black Spruce	Z = Water
G = Grass	MD = Mixed Deciduous	T = Tamarack	

Density

0 = Non Stocked	5 = Pole Timber Medium
1 = Seedling Sapling Poor	6 = Pole Timber Well
2 = Seedling Sapling Medium	7 = Saw Timber Poor
3 = Seedling Sapling Well	8 = Saw Timber Medium
4 = Pole Timber Poor	9 = Saw Timber Well

Dickenson Creek Mix 221.3 Acres

Unit 3- 8.4 acres
Unit 4- 16.1 acres
Unit 5- 26.8 acres
Unit 7- 43.1 acres
Unit 8- 36.5 acres

**Legend**

- Against State (Red)
- Against Private (Blue)
- Unit Boundary (Yellow)
- Closed Road
- ==== Two Track
- == County Gravel Rd
- County Paved Rd.
- Boundary on Road

Access road to unit 5.
Must be blocked and
bermed upon completion
of the sale.

