



**DEPARTMENT OF NATURAL RESOURCES
STATE OF MICHIGAN**

TIMBER SALE PROSPECTUS #6766

SCHEDULED SALE DATE AND TIME: **3:00 p.m. (local time) on December 8, 2020.**

LOCATION: **ESCANABA MGMT UNIT, 6833 HWY'S 2, 41 & M-35, GLADSTONE, MI 49837.**

CONTACT NAME: Eric Thompson

PHONE NUMBER: (906) 789-8231

PROSPECTUS NOTE: The bidder is advised to inspect the sale area and review the location, estimated volumes, operating costs and contract terms of proposed sales. Please be aware that some landowners may request 60 days or more notice for access across their land.

Notice is hereby given that bids will be received by the Unit Manager, ESCANABA MANAGEMENT UNIT, for certain timber on the following described lands:

Miscauna Beaver (33-031-20) / T37N, R28W, SEC. 26, S1/2SW.

T37N, R28W, SEC. 27, E1/2SW, S1/2SE.

T37N, R28W, SEC. 34, NENE.

T37N, R28W, SEC. 35, NWNW.

Menominee County, Advertised Price \$29,928.05, 65.2 Acres, Aspen, Hardwood.

SALE NOTE: All Payment Units on this sale can be harvested during the summer months. There is oak wilt possibly in the sale area, the cutting specs could be modified during the contract to treat the oak wilt.

TIMBER SALE INFORMATION

Miscauna Beaver (33-031-20)

T37N, R28W, SEC. 26; T37N, R28W, SEC. 27; T37N, R28W, SEC. 34; T37N, R28W, SEC. 35.

Menominee County (Advertised Price \$29,928.05)

SALE NOTE: All Payment Units on this sale can be harvested during the summer months. There is oak wilt possibly in the sale area, the cutting specs could be modified during the contract to treat the oak wilt.

A timber sale contract for this lump sum, sealed bid timber sale will be awarded to the responsible bidder offering the highest sealed bid price. All units of volume listed below were estimated using the T-Sale computer program and our traditional volume equations. Bids must be at or above the following advertised price for each product and species:

<u>PRODUCTS & SPECIES</u>	<u>ESTIMATED UNITS*</u>	<u>ADVERTISED PRICE</u>
Sawtimber		
Red Maple	2.9 MBF	\$ 96.00 / MBF
Red Oak	3.6 MBF	\$ 133.00 / MBF
Sugar Maple	1.8 MBF	\$ 163.00 / MBF
Pulpwood		
Balsam Fir	54 Cords	\$ 13.10 / Cord
Mixed Aspen	416 Cords	\$ 17.15 / Cord
Mixed Hardwood	656 Cords	\$ 20.15 / Cord
Mixed Spruce	14 Cords	\$ 15.55 / Cord
N. White Cedar	12 Cords	\$ 10.95 / Cord
Red Oak	20 Cords	\$ 20.20 / Cord
Red Pine	11 Cords	\$ 43.15 / Cord
White Pine	382 Cords	\$ 17.25 / Cord

* The total volume is statistically estimated within plus (+) or minus (-) 10.83 percent. There are an estimated 1,581 cords on this timber sale, plus or minus 171 cords at the 95% confidence level. The estimated units are final and not subject to adjustment. Prospective bidders are urged to examine this timber and to make their own estimates of quantity and quality.

BOND AND PAYMENT SCHEDULE:

1. A bond in the amount of \$1,496.40 to insure faithful performance of the conditions of the contract will be deposited by the successful bidder within 21 days of the sale award.
2. Cutting in any sale or unit without the required advance payment would be considered a trespass.
3. Total payment must be paid in advance or according to the following schedule :
 - (a) Ten percent (10%) of the sale value must be paid within 21 days of the sale award.
 - (b) The 10% down payment will be credited towards the first unit cut.
4. If no cutting takes place, the 10% down payment will not be refunded.
5. Operations on the contract issued will terminate on 09/29/2023.

SALE STATISTICS

SALE VOLUMES

VOLUME			STATISTICAL RANGE IN CORDS	
TOTAL CUBIC FEET	TOTAL CORDS	PERCENT ERROR	MINIMUM	MAXIMUM
124,860	1,581	10.83%	1,409	1,752

VDU VOLUMES

A VDU is a Volume Determination Unit. Volumes and their associated statistics are calculated at the VDU level and summarized to the sale level. There is often a one to one relationship between a VDU and a Payment Unit, but not always, depending on the cruise design. Refer to the VDU TO PAYMENT UNIT table.

	VOLUME			RANGE IN CORDS	
VDU	TOTAL CUBIC FEET	TOTAL CORDS	PERCENT ERROR	MINIMUM	MAXIMUM
20	9,606	122	34.72%	79	164
23	22,160	281	28.28%	201	360
28	50,679	642	14.09%	551	732
29	29,467	373	29.22%	264	482
30	12,948	164	20.98%	130	198
TOTAL:	124,860	1,581		1,225	1,936

VDU TO PAYMENT UNIT

When a VDU is associated with more than one Payment Unit (PU), the VDU volumes are assigned to the PU based on acres of the VDU within the PU.

VDU	VDU ACRES	PU	PU ACRES
20	8.7	1	8.7
23	11.8	2	11.8
28	23.9	3	23.9
29	12.3	5	12.3
30	8.5	4	8.5
TOTAL:	65.2		65.2

DESCRIPTION OF TIMBER BY PU (PU)

PU	MARKET GROUP	PRODUCT	QUANTITY	UNIT	ACRES	ADVERTISE PRICE
1	Balsam Fir	Pulpwood	37	Cords	8.7	\$1,945.70
	Mixed Aspen		12	Cords		
	<i>Quaking Aspen</i>		12	Cords		
	Mixed Hardwood		25	Cords		
	<i>Balsam Poplar</i>		19	Cords		
	<i>Black Cherry</i>		2	Cords		
	<i>Red Maple</i>		2	Cords		
	<i>Sugar Maple</i>		2	Cords		
	Mixed Spruce		5	Cords		
	<i>Black Spruce</i>		4	Cords		
	<i>White Spruce</i>		1	Cords		
	N. White Cedar		9	Cords		
	Red Oak		2	Cords		
	White Pine		31	Cords		
2	Balsam Fir	Pulpwood	12	Cords	11.8	\$4,795.40
	Mixed Aspen		200	Cords		
	<i>B. T. Aspen</i>		95	Cords		
	<i>Quaking Aspen</i>		105	Cords		
	Mixed Hardwood		21	Cords		
	<i>Red Maple</i>		21	Cords		
	Mixed Spruce		4	Cords		
	<i>White Spruce</i>		4	Cords		
	N. White Cedar		3	Cords		
	White Pine		40	Cords		
3	Red Maple	Sawtimber	2.9	MBF	23.9	\$13,255.50
	Red Oak	Pulpwood	3.1	MBF		
	Sugar Maple		1.8	MBF		
	Balsam Fir		5	Cords		
	Mixed Aspen		6	Cords		
	<i>Quaking Aspen</i>		6	Cords		
	Mixed Hardwood		507	Cords		
	<i>Balsam Poplar</i>		2	Cords		
	<i>Ironwood</i>		1	Cords		
	<i>Paper Birch</i>		4	Cords		
	<i>Red Maple</i>		417	Cords		
	<i>Sugar Maple</i>		83	Cords		
	Mixed Spruce		5	Cords		
	<i>White Spruce</i>		5	Cords		
	Red Oak		11	Cords		
	White Pine		92	Cords		
4	Mixed Aspen	Pulpwood	127	Cords	8.5	\$2,940.70
	<i>B. T. Aspen</i>		19	Cords		
	<i>Quaking Aspen</i>		108	Cords		
	Mixed Hardwood		31	Cords		
	<i>Balsam Poplar</i>		6	Cords		
	<i>Paper Birch</i>		2	Cords		
	<i>Red Maple</i>		15	Cords		
	<i>Sugar Maple</i>		8	Cords		
	White Pine		8	Cords		
5	Red Oak	Sawtimber	0.5	MBF	12.3	\$6,990.75
	Mixed Aspen	Pulpwood	71	Cords		
	<i>B. T. Aspen</i>		22	Cords		
	<i>Quaking Aspen</i>		49	Cords		
	Mixed Hardwood		72	Cords		
	<i>Paper Birch</i>		2	Cords		

DESCRIPTION OF TIMBER BY PU (PU), CON'T

PU	MARKET GROUP	PRODUCT	QUANTITY	UNIT	ACRES	ADVERTISE PRICE
5 con't	Red Maple	Pulpwood	66	Cords		
	Sugar Maple		4	Cords		
	Red Oak		7	Cords		
	Red Pine		11	Cords		
	White Pine		211	Cords		
TOTAL:			8.3	MBF		
TOTAL:			1,565	Cords		

Sale Specific Conditions & Requirements

Sale Name: Miscauna Beaver

Sale Number: 33-031-20 Seq#: 1

1 - Sale Area

1.2 - Boundaries

1.2.1 - Painted boundaries (9/19)

The sale boundary and Payment Unit boundaries are marked and identified by blue, red and yellow paint. Exterior sale boundary lines against private property are marked with blue paint. Exterior sale boundary lines against state are marked with red paint. Interior Payment Unit boundaries are marked with yellow paint. Retention patches are marked with red paint; no harvesting activities may occur within these areas. Yellow painted trees designating an interior Payment Unit boundary are only to be cut when all surrounding Payment Units have been paid for.

2 - Timber Specifications

2.1 - Included Timber

2.1.1 - Clearcut unit(s) with unmerchantable trees (6/14)

Within Payment Unit(s) 1, cut all trees that are two (2) inches or more at DBH; except trees marked with green paint.

Within Payment Unit(s) 2, 3, 4 and 5, cut all trees that are three (3) inches or more at DBH. In addition, within Payment Units 3, 4 and 5, do not cut trees marked with green paint. Also, within Payment Unit 3, do not cut cedar.

2.1.16 - Timber along county or forest roads (6/14)

Cut and remove all standing trees three (3) inches at DBH or greater within 33 feet of the center line of the Miscauna Grade. This area to be cut will run from where the access road branches off of the Miscauna Creek Road heading west until reaching the western edge of Payment Unit 1. The wood harvested will be skid and decked separately by species and product. The sale administrator will scale the wood and the Purchaser will be invoiced for the wood, at the contract rates.

3 - Payments

3.3 - Pre-measured Sales

3.3.4 - Dividing payment units (7/14)

Payment Unit(s) \$18,000 in value or greater may be divided at the request of the Purchaser and upon approval of the Unit Manager. Dividing Payment Units is a contract modification which requires a Timber Sale Contract Amendment. There will be only one division per Payment Unit.

4 - Transportation

4.2 - Maintenance

4.2.1 - Hauling restriction (12/08)

Hauling may be restricted on forest roads by the Unit Manager or his/her representative. The restriction may occur during spring breakup or during other wet weather conditions.

4.2.4 - Grading (10/16)

For completion of the sale, state forest roads must be graded. In general, this will require a road grader or bull dozer to shape up the roads after forest products have been hauled off site. This includes cleaning of drainage areas, grading, crowning and filling with gravel, if necessary. The grading equipment to be used must be approved by the Unit Manager or his/her representative.

5 - Operations

5.2 - Conduct of Operations

5.2.3 - Operating Restrictions

5.2.3.5 - Oak wilt restriction (1/18)

Within Payment Unit(s) 3, unless changed by written agreement, cutting, skidding, hauling within the sale and brushing of access roads to the sale are not permitted during the period of April 15 to July 15. Operations may be allowed if specific steps are taken to prevent damaging uncut oak during the high risk period. Those steps may include completing all road brushing before April 15th and clearing a tree-length buffer along uncut oak cover before April 15th. This is necessary to reduce the spread of oak wilt. For more information, contact the Unit Manager or his/her representative.

5.4 - Soil Protection

5.4.1 - Rutting restriction, general (7/16)

Operations are to cease immediately if equipment and weather conditions result in rutting of roads and/or skid trails which is 12 inches or greater in depth and 50 feet in length. The Unit Manager or his/her representative may restrict hauling and/or skidding if ruts exceed the specified depth. With the Unit Manager or his/her representative's approval, the Purchaser may return to the area when the risk of rutting has decreased.

6 - Safety and Fire Prevention

6.2 - Signing

6.2.1 - Road posting (9/09)

The Purchaser is responsible for posting and maintaining caution signs on the Miscauna Creek Road prior to beginning operations. The road must be posted at appropriate distances from the sale area to warn of logging activity and truck traffic. Signs must be removed when harvest operations are suspended or completed. The Purchaser will provide these signs.

7 - Other Conditions

7.3 - Contract Modifications

7.3.2 - Modification for oak wilt (2/05)

Within the sale area, there may be patches of oak wilt. If oak wilt is identified within the sale area, this contract may be modified. The following modifications could occur: time of cutting, species to cut, volume to harvest, or various others dealing with the treatment of oak wilt. If a species is not specified in this contract, it shall be paid for at the average price received for that species and product.

7.5 - Loss

7.5.1 - Deteriorating timber (7/09)

The sale area has received damage from the spruce budworm. The Purchaser should harvest the wood as soon as possible. The Department of Natural Resources is held free of responsibility of any further damage or deterioration due to delay in harvesting.

**TIMBER SALE MAP**

This information provided by authority of Part 525, 1994 PA 451, as amended.

Sale Number

33-031

Year

20

Forest Management Unit		County	Mapped By	Beaudo	Date	Page	of
Escanaba Management Unit		Menominee County	Cruised By	Salter, Beaudo	8/10/2020	1	1
Township	37N	Range	28W	Section(s) and Subdivision(s)		Scale	
				Sec 26 - S1/2SW; Sec 27 - E1/2SW, S1/2SE; Sec 34 - NENE; Sec 35 - NWNW.		1:15,840	
Cover Type				Density			
A = Aspen	H = Hemlock	N = Marsh	U = Upland Brush	0 = Non Stocked	5 = Pole Timber Medium		
B = Paper Birch	J = Jack Pine	O = Oak	UM = Upland Mixed	1 = Seedling Sapling Poor	6 = Pole Timber Well		
C = Cedar	L = Lowland Brush	P = Lowland Poplar	V = Bog or Marsh	2 = Seedling Sapling Medium	7 = Saw Timber Poor		
D = Treed Bog	LM = Lowland Mixed	Q = Mixed Swamp Conifer	W = White Pine	3 = Seedling Sapling Well	8 = Saw Timber Medium		
E = Swamp Hdwoods	M = Mpl, Bch, Brch	R = Red Pine	X = Non Stocked	4 = Pole Timber Poor	9 = Saw Timber Well		
F = Spruce Fir	MC = Mixed Conifer	S = Black Spruce	Z = Water				
G = Grass	MD = Mixed Decidious	T = Tamarack					

PU	Acres	PU	Acres
1	8.7	4	8.5
2	11.8	5	12.3
3	23.9		

Miscauna Beaver

Compartment 10

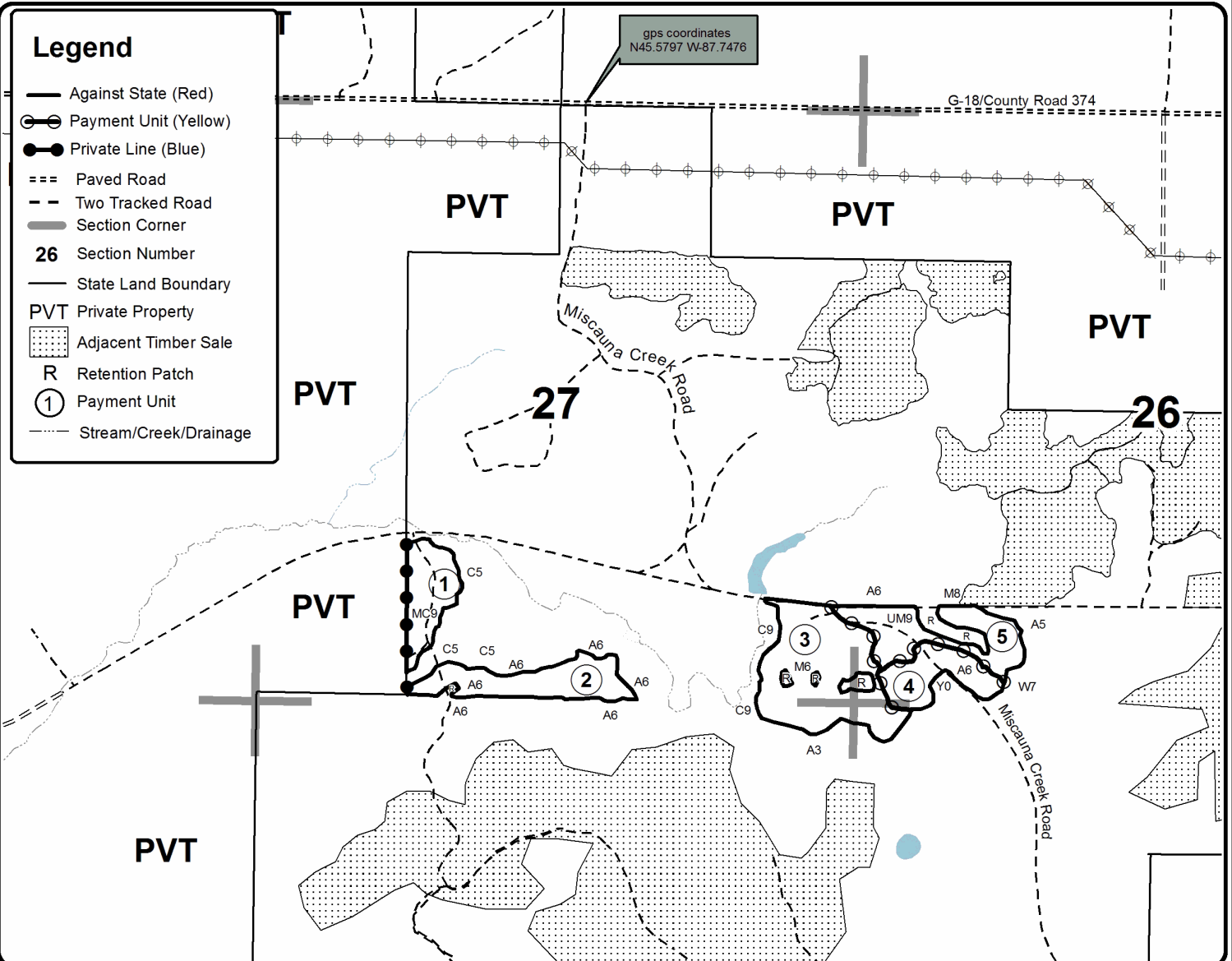
65.2 Acres



QR Code

**Legend**

- Against State (Red)
- Payment Unit (Yellow)
- Private Line (Blue)
- === Paved Road
- - - Two Tracked Road
- Section Corner
- 26** Section Number
- State Land Boundary
- PVT Private Property
- ▨ Adjacent Timber Sale
- R Retention Patch
- ① Payment Unit
- Stream/Creek/Drainage



0 0.125 0.25 0.5 0.75 1 Miles