



**DEPARTMENT OF NATURAL RESOURCES
STATE OF MICHIGAN**

TIMBER SALE PROSPECTUS #6846

SCHEDULED SALE DATE AND TIME: 10:00 a.m. (local time) on April 27, 2021.

LOCATION: ATLANTA MGMT UNIT, 13501 M 33, ATLANTA, MI 49709.

CONTACT NAME: Cody Stevens

PHONE NUMBER: (989) 785-4251

PROSPECTUS NOTE: The bidder is advised to inspect the sale area and review the location, estimated volumes, operating costs and contract terms of proposed sales. Please be aware that some landowners may request 60 days or more notice for access across their land.

Notice is hereby given that bids will be received by the Unit Manager, ATLANTA MANAGEMENT UNIT, for certain timber on the following described lands:

Aspen Under Scrutiny (54-007-20) / T29N, R03E, SEC. 26, NWNW,S1/2NW,W1/2SW.

T29N, R03E, SEC. 27, NENE,S1/2NE,N1/2SE,SESE.

T29N, R03E, SEC. 34, E1/2NE.

T29N, R03E, SEC. 35, SWNW.

Montmorency County, Advertised Price \$67,707.45, 152.0 Acres, Aspen, Hardwood.

SALE NOTE: Portions of Payment Unit(s) 1, 2, and 7 are wet. Operating caution advised.

TIMBER SALE INFORMATION

Aspen Under Scrutiny (54-007-20)

T29N, R03E, SEC. 26; T29N, R03E, SEC. 27; T29N, R03E, SEC. 34; T29N, R03E, SEC. 35.
Montmorency County (Advertised Price \$67,707.45)

SALE NOTE: Portions of Payment Unit(s) 1, 2, and 7 are wet. Operating caution advised.

A timber sale contract for this lump sum, sealed bid timber sale will be awarded to the responsible bidder offering the highest sealed bid price. All units of volume listed below were estimated using the T-Sale computer program and our traditional volume equations. Bids must be at or above the following advertised price for each product and species:

<u>PRODUCTS & SPECIES</u>	<u>ESTIMATED UNITS*</u>	<u>ADVERTISED PRICE</u>
Sawtimber		
Basswood	7.6 MBF	\$ 42.00 / MBF
Mixed Aspen	38.9 MBF	\$ 41.00 / MBF
Red Maple	15.0 MBF	\$ 50.00 / MBF
Red Oak	181.1 MBF	\$ 141.00 / MBF
Sugar Maple	6.7 MBF	\$ 242.00 / MBF
White Pine	6.9 MBF	\$ 49.00 / MBF
Pulpwood		
Balsam Fir	42 Cords	\$ 13.60 / Cord
Basswood	25 Cords	\$ 5.35 / Cord
Mixed Aspen	1,866 Cords	\$ 13.20 / Cord
Mixed Hardwood	403 Cords	\$ 13.70 / Cord
Mixed Oak	392 Cords	\$ 16.80 / Cord
Mixed Spruce	3 Cords	\$ 6.50 / Cord
White Pine	6 Cords	\$ 14.40 / Cord

* The total volume is statistically estimated within plus (+) or minus (-) 9.46 percent. There are an estimated 3,251 cords on this timber sale, plus or minus 308 cords at the 95% confidence level. The estimated units are final and not subject to adjustment. Prospective bidders are urged to examine this timber and to make their own estimates of quantity and quality.

BOND AND PAYMENT SCHEDULE:

1. A bond in the amount of \$3,385.37 to insure faithful performance of the conditions of the contract will be deposited by the successful bidder within 21 days of the sale award.
2. Cutting in any sale or unit without the required advance payment would be considered a trespass.
3. Total payment must be paid in advance or according to the following schedule :
 - (a) Ten percent (10%) of the sale value must be paid within 21 days of the sale award.
 - (b) The 10% down payment will be credited towards the first unit cut.
 - (c) Payment for each of the following units must be made before cutting begins in that unit:

<u>PAYMENT UNIT NUMBER</u>	<u>PERCENT OF TOTAL SALE VALUE</u>
01	9.8%
02	10.0%
03	7.6%
04	12.8%
05	13.4%
06	13.7%
07	8.7%
08	7.1%
09	6.7%
10	10.2%

4. If no cutting takes place, the 10% down payment will not be refunded.
5. Operations on the contract issued will terminate on 12/31/2023.

SALE STATISTICS

SALE VOLUMES

<u>VOLUME</u>		<u>STATISTICAL RANGE IN CORDS</u>		
<u>TOTAL CUBIC FEET</u>	<u>TOTAL CORDS</u>	<u>PERCENT ERROR</u>	<u>MINIMUM</u>	<u>MAXIMUM</u>
256,801	3,251	9.46%	2,943	3,558

VDU VOLUMES

A VDU is a Volume Determination Unit. Volumes and their associated statistics are calculated at the VDU level and summarized to the sale level. There is often a one to one relationship between a VDU and a Payment Unit, but not always, depending on the cruise design. Refer to the VDU TO PAYMENT UNIT table.

	VOLUME			RANGE IN CORDS	
VDU	TOTAL CUBIC FEET	TOTAL CORDS	PERCENT ERROR	MINIMUM	MAXIMUM
8	95,393	1,208	16.05%	1,014	1,401
20	20,959	265	29.40%	187	343
21	3,974	50	43.70%	28	72
60	33,204	420	24.17%	319	522
63	25,912	328	26.20%	242	414
81	21,140	268	23.36%	205	330
105	56,216	712	14.49%	608	815
TOTAL:	256,797	3,251		2,604	3,898

VDU TO PAYMENT UNIT

When a VDU is associated with more than one Payment Unit (PU), the VDU volumes are assigned to the PU based on acres of the VDU within the PU.

VDU	VDU ACRES	PU	PU ACRES
8	49.6	2	14.8
		3	11.3
		4	19.1
		5	4.4
20	8.0	5	5.7
		6	2.3
21	8.9	1	8.9
60	23.6	7	6.2
		8	17.4
63	22.1	1	22.0
		2	0.1
81	11.7	6	7.1
		7	4.6
105	28.1	9	11.1
		10	17.0
TOTAL:	152.0		152.0

DESCRIPTION OF TIMBER BY PU (PU)

PU	MARKET GROUP	PRODUCT	QUANTITY	UNIT	ACRES	ADVERTISE PRICE
1	Mixed Aspen	Sawtimber	3.8	MBF	30.9	\$6,616.30
	<i>Quaking Aspen</i>		3.8	<i>MBF</i>		
	Red Maple		8.4	MBF		
	Red Oak		10.7	MBF		
	White Pine		0.6	MBF		
	Balsam Fir	Pulpwood	1	Cords		
	<i>Balsam Fir</i>		1	<i>Cords</i>		
	Mixed Aspen		228	Cords		
	<i>B. T. Aspen</i>		47	<i>Cords</i>		
	<i>Quaking Aspen</i>		181	<i>Cords</i>		
	Mixed Hardwood		64	Cords		
	<i>Red Maple</i>		64	<i>Cords</i>		
	Mixed Oak		35	Cords		
	<i>Northern Pin Oak</i>	<i>Sawtimber</i>	1.2	<i>MBF</i>		
	<i>Northern Pin Oak</i>	<i>Pulpwood</i>	5	<i>Cords</i>		
	<i>Red Oak</i>		28	<i>Cords</i>		
	White Pine		1	Cords		
2	Mixed Aspen	Sawtimber	5.9	MBF	14.9	\$6,749.10
	<i>B. T. Aspen</i>		4.8	<i>MBF</i>		
	<i>Quaking Aspen</i>		1.1	<i>MBF</i>		
	Red Maple		1.1	MBF		
	Red Oak		14.3	MBF		
	Sugar Maple		0.4	MBF		
	Balsam Fir	Pulpwood	2	Cords		
	<i>Balsam Fir</i>	<i>Sawtimber</i>	0.2	<i>MBF</i>		
	<i>Balsam Fir</i>	<i>Pulpwood</i>	2	<i>Cords</i>		
	Mixed Aspen		247	Cords		
	<i>B. T. Aspen</i>		109	<i>Cords</i>		
	<i>Balsam Poplar</i>		2	<i>Cords</i>		
	<i>Quaking Aspen</i>		136	<i>Cords</i>		
	Mixed Hardwood		26	Cords		
	<i>Paper Birch</i>	<i>Sawtimber</i>	0.4	<i>MBF</i>		
	<i>Ironwood</i>	<i>Pulpwood</i>	1	<i>Cords</i>		
	<i>Paper Birch</i>		6	<i>Cords</i>		
	<i>Red Maple</i>		17	<i>Cords</i>		
	<i>Sugar Maple</i>		1	<i>Cords</i>		
	Mixed Oak		41	Cords		
	<i>Red Oak</i>		41	<i>Cords</i>		
	Mixed Spruce		1	Cords		
	<i>White Spruce</i>	<i>Sawtimber</i>	0.2	<i>MBF</i>		
	<i>White Spruce</i>	<i>Pulpwood</i>	1	<i>Cords</i>		
3	Mixed Aspen	Sawtimber	4.5	MBF	11.3	\$5,138.10
	<i>B. T. Aspen</i>		3.7	<i>MBF</i>		
	<i>Quaking Aspen</i>		0.8	<i>MBF</i>		
	Red Maple		0.8	MBF		
	Red Oak		10.9	MBF		
	Sugar Maple		0.3	MBF		
	Balsam Fir	Pulpwood	2	Cords		
	<i>Balsam Fir</i>	<i>Sawtimber</i>	0.2	<i>MBF</i>		
	<i>Balsam Fir</i>	<i>Pulpwood</i>	2	<i>Cords</i>		
	Mixed Aspen		187	Cords		
	<i>B. T. Aspen</i>		83	<i>Cords</i>		
	<i>Balsam Poplar</i>		1	<i>Cords</i>		
	<i>Quaking Aspen</i>		103	<i>Cords</i>		
	Mixed Hardwood		21	Cords		

DESCRIPTION OF TIMBER BY PU (PU), CON'T

PU	MARKET GROUP	PRODUCT	QUANTITY	UNIT	ACRES	ADVERTISE PRICE
3 con't	<i>Paper Birch</i>	<i>Sawtimber</i>	0.3	<i>MBF</i>		
	<i>Ironwood</i>	<i>Pulpwood</i>	1	<i>Cords</i>		
	<i>Paper Birch</i>		5	<i>Cords</i>		
	<i>Red Maple</i>		13	<i>Cords</i>		
	<i>Sugar Maple</i>		1	<i>Cords</i>		
	Mixed Oak		31	<i>Cords</i>		
	<i>Red Oak</i>		31	<i>Cords</i>		
4	Mixed Aspen	Sawtimber	7.6	MBF	19.1	\$8,684.90
	<i>B. T. Aspen</i>		6.2	<i>MBF</i>		
	<i>Quaking Aspen</i>		1.4	<i>MBF</i>		
	Red Maple		1.4	MBF		
	Red Oak		18.4	MBF		
	Sugar Maple		0.5	MBF		
	Balsam Fir	Pulpwood	3	Cords		
	<i>Balsam Fir</i>	<i>Sawtimber</i>	0.2	<i>MBF</i>		
	<i>Balsam Fir</i>	<i>Pulpwood</i>	3	<i>Cords</i>		
	Mixed Aspen		317	Cords		
	<i>B. T. Aspen</i>		141	<i>Cords</i>		
	<i>Balsam Poplar</i>		2	<i>Cords</i>		
	<i>Quaking Aspen</i>		174	<i>Cords</i>		
	Mixed Hardwood		34	Cords		
	<i>Paper Birch</i>	<i>Sawtimber</i>	0.6	<i>MBF</i>		
	<i>Ironwood</i>	<i>Pulpwood</i>	1	<i>Cords</i>		
	<i>Paper Birch</i>		8	<i>Cords</i>		
	<i>Red Maple</i>		22	<i>Cords</i>		
	<i>Sugar Maple</i>		2	<i>Cords</i>		
	Mixed Oak		53	Cords		
	<i>Red Oak</i>		53	<i>Cords</i>		
	Mixed Spruce		1	Cords		
	<i>White Spruce</i>	<i>Sawtimber</i>	0.2	<i>MBF</i>		
	<i>White Spruce</i>	<i>Pulpwood</i>	1	<i>Cords</i>		
5	Basswood	Sawtimber	2.5	MBF	10.1	\$9,062.30
	Mixed Aspen		2.8	MBF		
	<i>B. T. Aspen</i>		2.5	<i>MBF</i>		
	<i>Quaking Aspen</i>		0.3	<i>MBF</i>		
	Red Maple		0.3	MBF		
	Red Oak		40.9	MBF		
	Sugar Maple		0.6	MBF		
	White Pine		3.7	MBF		
	Balsam Fir	Pulpwood	1	Cords		
	<i>Balsam Fir</i>	<i>Sawtimber</i>	0.1	<i>MBF</i>		
	<i>Balsam Fir</i>	<i>Pulpwood</i>	1	<i>Cords</i>		
	Basswood		10	Cords		
	Mixed Aspen		86	Cords		
	<i>B. T. Aspen</i>		34	<i>Cords</i>		
	<i>Balsam Poplar</i>		1	<i>Cords</i>		
	<i>Quaking Aspen</i>		51	<i>Cords</i>		
	Mixed Hardwood		30	Cords		
	<i>Beech</i>	<i>Sawtimber</i>	1.2	<i>MBF</i>		
	<i>Paper Birch</i>		0.1	<i>MBF</i>		
	<i>Beech</i>	<i>Pulpwood</i>	8	<i>Cords</i>		
	<i>Paper Birch</i>		2	<i>Cords</i>		
	<i>Red Maple</i>		9	<i>Cords</i>		
	<i>Sugar Maple</i>		9	<i>Cords</i>		
	Mixed Oak		65	Cords		

DESCRIPTION OF TIMBER BY PU (PU), CON'T

PU	MARKET GROUP	PRODUCT	QUANTITY	UNIT	ACRES	ADVERTISE PRICE
5 con't	<i>Red Oak</i>	<i>Pulpwood</i>	65	<i>Cords</i>		
	White Pine		2	Cords		
6	Basswood	Sawtimber	3.5	MBF	9.4	\$9,298.80
	Mixed Aspen		0.7	MBF		
	<i>B. T. Aspen</i>		0.7	<i>MBF</i>		
	Red Oak		47.0	MBF		
	Sugar Maple		2.3	MBF		
	White Pine		1.5	MBF		
	Basswood	Pulpwood	8	Cords		
	Mixed Aspen		14	Cords		
	<i>B. T. Aspen</i>		2	<i>Cords</i>		
	<i>Quaking Aspen</i>		12	<i>Cords</i>		
	Mixed Hardwood		56	Cords		
	<i>Beech</i>	<i>Sawtimber</i>	0.5	<i>MBF</i>		
	<i>Beech</i>	<i>Pulpwood</i>	5	<i>Cords</i>		
	<i>Ironwood</i>		4	<i>Cords</i>		
	<i>Red Maple</i>		6	<i>Cords</i>		
	<i>Sugar Maple</i>		40	<i>Cords</i>		
	Mixed Oak		51	Cords		
	<i>Red Oak</i>		51	<i>Cords</i>		
	White Pine		1	Cords		
7	Basswood	Sawtimber	1.6	MBF	10.8	\$5,897.35
	Mixed Aspen		1.6	MBF		
	<i>B. T. Aspen</i>		1.4	<i>MBF</i>		
	<i>Quaking Aspen</i>		0.2	<i>MBF</i>		
	Red Oak		22.0	MBF		
	Sugar Maple		1.5	MBF		
	Basswood	Pulpwood	3	Cords		
	Mixed Aspen		80	Cords		
	<i>B. T. Aspen</i>		62	<i>Cords</i>		
	<i>Quaking Aspen</i>		18	<i>Cords</i>		
	Mixed Hardwood		43	Cords		
	<i>Beech</i>		1	<i>Cords</i>		
	<i>Ironwood</i>		3	<i>Cords</i>		
	<i>Paper Birch</i>		1	<i>Cords</i>		
	<i>Red Maple</i>		14	<i>Cords</i>		
	<i>Sugar Maple</i>		24	<i>Cords</i>		
	Mixed Oak		38	Cords		
	<i>Red Oak</i>		38	<i>Cords</i>		
8	Mixed Aspen	Sawtimber	3.7	MBF	17.4	\$4,839.80
	<i>B. T. Aspen</i>		3.3	<i>MBF</i>		
	<i>Quaking Aspen</i>		0.4	<i>MBF</i>		
	Red Oak		3.3	MBF		
	Sugar Maple		0.5	MBF		
	Mixed Aspen	Pulpwood	208	Cords		
	<i>B. T. Aspen</i>		170	<i>Cords</i>		
	<i>Quaking Aspen</i>		38	<i>Cords</i>		
	Mixed Hardwood		34	Cords		
	<i>Paper Birch</i>		1	<i>Cords</i>		
	<i>Red Maple</i>		32	<i>Cords</i>		
	<i>Sugar Maple</i>		1	<i>Cords</i>		
	Mixed Oak		53	Cords		
	<i>Red Oak</i>		53	<i>Cords</i>		
9	Mixed Aspen	Sawtimber	3.2	MBF	11.1	\$4,511.50
	<i>B. T. Aspen</i>		3.0	<i>MBF</i>		

DESCRIPTION OF TIMBER BY PU (PU), CON'T

PU	MARKET GROUP	PRODUCT	QUANTITY	UNIT	ACRES	ADVERTISE PRICE
9 con't	<i>Quaking Aspen</i>	Pulpwood	0.2	<i>MBF</i>		
	Red Maple		1.2	MBF		
	Red Oak		5.4	MBF		
	Sugar Maple		0.2	MBF		
	White Pine		0.4	MBF		
	Balsam Fir		13	Cords		
	<i>Balsam Fir</i>		13	<i>Cords</i>		
	Basswood		2	Cords		
	Mixed Aspen		197	Cords		
	<i>B. T. Aspen</i>		102	<i>Cords</i>		
	<i>Quaking Aspen</i>		95	<i>Cords</i>		
	Mixed Hardwood		38	Cords		
	<i>Paper Birch</i>		2	<i>Cords</i>		
	<i>Red Maple</i>		32	<i>Cords</i>		
	<i>Sugar Maple</i>		4	<i>Cords</i>		
	Mixed Oak		10	Cords		
	<i>Red Oak</i>		10	<i>Cords</i>		
	White Pine		1	Cords		
10	Mixed Aspen	Sawtimber	5.1	MBF	17.0	\$6,889.20
	<i>B. T. Aspen</i>		4.7	<i>MBF</i>		
	<i>Quaking Aspen</i>		0.4	<i>MBF</i>		
	Red Maple		1.8	MBF		
	Red Oak		8.2	MBF		
	Sugar Maple		0.4	MBF		
	White Pine		0.7	MBF		
	Balsam Fir		19	Cords		
	<i>Balsam Fir</i>		19	<i>Cords</i>		
	Basswood		2	Cords		
	Mixed Aspen		302	Cords		
	<i>B. T. Aspen</i>		156	<i>Cords</i>		
	<i>Quaking Aspen</i>		146	<i>Cords</i>		
	Mixed Hardwood		57	Cords		
	<i>Paper Birch</i>		2	<i>Cords</i>		
	<i>Red Maple</i>		50	<i>Cords</i>		
	<i>Sugar Maple</i>		5	<i>Cords</i>		
	Mixed Oak		15	Cords		
	<i>Red Oak</i>		15	<i>Cords</i>		
	White Pine		1	Cords		
TOTAL:			256.2	MBF		
TOTAL:			2,735	Cords		

Sale Specific Conditions & Requirements

Sale Name: Aspen Under Scrutiny

Sale Number: 54-007-20 Seq#: 2

1 - Sale Area

1.2 - Boundaries

1.2.1 - Painted boundaries (9/19)

The sale boundary and Payment Unit boundaries are marked and identified by blue, red, and yellow paint. Exterior sale boundary lines against private property are marked with blue paint. Exterior sale boundary lines against state are marked with red paint. Interior Payment Unit boundaries are marked with yellow paint. Yellow painted trees designating an interior Payment Unit boundary are only to be cut when all surrounding Payment Units have been paid.

2 - Timber Specifications

2.1 - Included Timber

2.1.1 - Clearcut unit(s) with unmerchantable trees (6/14)

Within Payment Unit(s) 1-10, cut all trees that are two (2) inches or more at DBH, except do not cut oak 26" or more at DBH which have been marked in green paint above and below stump height. In addition, the following exceptions apply:

- Within Payment Units 2-5 and 8-10, do not cut white pine or red pine.
- Within Payment Unit 7, do not cut cedar or hemlock.

Special protection trees identified in accordance with condition 3.4.2, within clearcutting unit boundaries, are not Included Timber and are to be protected.

2.1.15 - Hazard trees near roads (7/13)

Cut and remove all standing dead trees within 100 feet of the cleared portion of Greasy Creek, McIntire, and Abbe Roads. These trees must be scattered back into the Sale Area.

3 - Payments

3.4 - Damaged Timber

3.4.1 - Damaged timber (7/16)

General Condition and Requirement 3.4 Damaged Timber, defines liquidated damages for undesignated live merchantable trees which are cut or injured. In addition, extreme care should be taken to avoid damage to tree seedlings and saplings. Within Payment Unit 1, if more than 50% of the tree seedlings or saplings (1/4" to 4.5" DBH) within a specified portion of the Sale Area are damaged, liquidated damages will be assessed at \$100 per acre for all acreage within that specified portion of the Sale Area that was damaged.

3.4.2 - Special Protection Trees (4/14)

The Purchaser shall not cut live or dead special protection trees within cutting units or clearings. Special protection trees are trees marked with green paint above and below stump height, along with red pine and white pine in Payment Units 2-5 and 8-10. If the Purchaser's operations have cut or damaged special protection trees through carelessness, the Purchaser shall pay \$200 per green-marked tree, \$100 per pine sawtimber tree, and \$50 per pine pulp tree. as fixed, agreed and liquidated damages for each special protection tree cut or damaged. Such payment does not constitute ownership of the undesignated timber.

4 - Transportation

4.1 - Construction

4.1.3 - Slash and earthen piles (8/04)

Piles or windrows of earth along roads and landings that have been widened or constructed shall be leveled. Slash from road maintenance or construction, including stumps, shall be dispersed throughout the sale.

4.1.4 - Timber removed for construction (12/09)

Trees cut or damaged in the process of pre-approved road, landing or skid trail construction will be decked in an area separate from other Designated Timber and not removed until measured by the sale administrator. Payment will be made at the specified Purchase Unit Price.

4.1.6 - Road construction (1/09)

Construction of new roads and improvements of existing roads shall be done in such a way as to minimize the environmental and visual impacts. Merchantable trees shall be cut and utilized unless otherwise directed. Non-merchantable trees shall be severed and laid flat on the ground. Slash shall be scattered, and not left in windrows and kept a minimum of 10 feet back from the road edge. Timber cut for road construction shall be piled separately for scaling and billing at unit purchase prices. Stumps shall be set upright, not left on edge, and be moved at least 10 feet away from the road edge. Disturbed soil shall be feathered into the woods and not left in berms or windrows.

4.1.7 - Road closure (10/11)

All new roads built into the sale must be blocked to vehicle traffic upon completion of the sale. Overgrown roads that are reopened shall be considered new roads. In general, this will require constructing a four (4') foot high berm of stumps and logs covered with earth. These roads must be rendered impassable to cars and trucks. Contact the sale administrator for specific details of design and placement.

4.2 - Maintenance

4.2.2 - Fill material (4/07)

To maintain roads, fill material may be needed in areas where "holes" exist or may be expected to develop. This fill material should be placed before trucking begins. Fill material shall consist only of crushed rock or cobbles.

4.2.5 - Two wheel drive condition (2/04)

All existing trail roads on and adjacent to the sale area must be passable by two-wheel drive traffic for the duration of the sale.

5 - Operations

5.1 - Notification

5.1.1 - Pre-sale conference (10/16)

A pre-sale conference between the Purchaser and sale administrator is required prior to beginning any operations to determine landing and road locations.

5.1.3 - Well heads and natural gas pipelines (11/15)

The Purchaser is responsible for contacting the gas company, Riverside Energy Michigan (231-995-4000), 30 days prior to operating equipment in the vicinity of well heads or natural gas pipelines.

5.1.4 - Post-sale conference (10/16)

A post-sale conference on site between the Purchaser and sale administrator is required prior to the completion of active logging operations to determine clean-up and repair of landings, road edges, and the fulfillment of other contract specifications.

5.2 - Conduct of Operations

5.2.1 - Slash

5.2.1.10 - No slash in openings (5/10)

No brush or logging debris is to be left in the maintained wildlife opening which is indicated by G0 on the Timber Sale Map. Any damage to the opening shall be repaired according to specifications of the Unit Manager or his/her representative.

5.2.2 - Hazard Trees/Snags

5.2.2.1 - Den trees (10/16)

Obvious hollow and/or den trees shall be protected and left standing unless they are a safety hazard.

5.2.3 - Operating Restrictions

5.2.3.4 - Oak wilt restriction, no exceptions (1/18)

Within Payment Unit(s) 3, 4 and 8, cutting, skidding, and hauling within the sale and brushing of access roads to the sale are not permitted during the period of April 15 to July 15. No exceptions will be granted. This is necessary to reduce the spread of oak wilt.

5.2.3.5 - Oak wilt restriction (1/18)

Within Payment Unit(s) 1, 2, 5-7 and 9-10, unless changed by written agreement, cutting, skidding, hauling within the sale and brushing of access roads to the sale are not permitted during the period of April 15 to July 15. Operations may be allowed if specific steps are taken to prevent damaging uncut oak during the high risk period. Those steps may include completing all road brushing before April 15th and clearing a tree-length buffer along uncut oak cover before April 15th. This is necessary to reduce the spread of oak wilt. For more information, contact the Unit Manager or his/her representative.

5.2.3.11 - Coppice regeneration protection (4/10)

All timber harvesting operations in any Payment Unit must be completed before significant deciduous sprouting occurs to minimize damage to the new regeneration. Any post-harvest operations, such as chipping, forwarding, or skidding must be completed within 30 days of severing stems. If it is anticipated that these activities will be delayed, then tops, roundwood, or drags shall be carried to one central location or left in place in the harvest unit. The Unit Manager or his/her representative may cease such operations if sprouting occurs before the operation is complete.

5.2.4 - Dead and Down Creation

5.2.4.1 - Dead and down creation, marked trees (10/13)

Within Payment Unit(s) 2-5 and 8-10, to improve horizontal cover habitat for snowshoe hare, grouse, deer, and other species, the Purchaser is to push over trees indicated by an orange-painted X. These trees should be tipped over with the root ball still attached so the base of the tree is suspended off the ground. The crown of the fallen tree should be at or near ground level after it is pushed over. If it is impossible or impractical to push these trees over, they may be severed or partially severed at the stump. Whenever possible the stem of the tree should rest above ground level.

5.2.22 - Operating Caution

5.2.22.1 - Operating caution (6/11)

It is recommended, but not required, that within Payment Unit(s) 1, 2, and 7, cutting, skidding, and hauling occur during dry summer or frozen winter conditions. The reason for the recommendation is because these units contain soils that may be seasonally wet and may not support equipment without causing rutting and compaction. The Producer must use the utmost caution when operating on these soils under wet conditions.

5.2.32 - Decking/landing restoration (9/13)

All decking and landing areas must have the surface area restored to a condition equal to or better than before. This is to ensure the proper regeneration of the stand. Wood debris, chips, and "cookies" from trimmings must be removed or scattered away from landing and loading areas and may not be windrowed on the edge.

5.2.38 - No decking against live trees (2/04)

Cut products may not be decked against unmarked or designated leave trees.

5.4 - Soil Protection

5.4.1 - Rutting restriction, general (7/16)

Operations are to cease immediately if equipment and weather conditions result in rutting of roads and/or skid trails which is 12 inches or greater in depth and 50 feet in length. The Unit Manager or his/her representative may restrict hauling and/or skidding if ruts exceed the specified depth. With the Unit Manager or his/her representative's approval, the Purchaser may return to the area when the risk of rutting has decreased.

5.4.2 - Skid trails (2/04)

Skid trails up and down slopes should be avoided. If however this is unavoidable, these trails will be left in a non-erodible condition using water bars, logs, and slash. Placing of slash on these skid trails while logging is ongoing may alleviate need for any further action. At the direction of the sale administrator, seed, fertilizer, and mulch may also be required.

5.8 - Protection of Endangered Species

5.8.5 - Protection of raptor nests (3/13)

All trees with raptor nests will be protected if found during harvesting operations. Notification will be made to the Unit Manager or his/her representative who will notify the Wildlife Biologist so an on-site evaluation and recommendation can be made, if necessary.



TIMBER SALE MAP

This information provided by authority of Part 525, 1994 PA 451, as amended.

Sale Number

54 - 007

Year

20

Forest Management Unit
Atlanta Management UnitCounty
MontmorencyMapped By
NatzkeDate
04/16/2020Page
1 of
1Township
29 NRange
03 ESection(s) and Subdivision(s)
S. 26: NW, W2SW; S. 27: NE, SE; S. 34: E2NE; S. 35: SWNWScale
1:15,840

Cover Type

A = Aspen	H = Hemlock	N = Marsh	U = Upland Brush
B = Paper Birch	J = Jack Pine	O = Oak	UM = Upland Mixed
C = Cedar	L = Lowland Brush	P = Lowland Poplar	V = Bog or Marsh
D = Treed Bog	LM = Lowland Mixed	Q = Mixed Swamp Conifer	W = White Pine
E = Swamp Hdwoods	M = Mpl, Bch, Brch	R = Red Pine	X = Non Stocked
F = Spruce Fir	MC = Mixed Conifer	S = Black Spruce	Z = Water
G = Grass	MD = Mixed Deciduous	T = Tamarack	

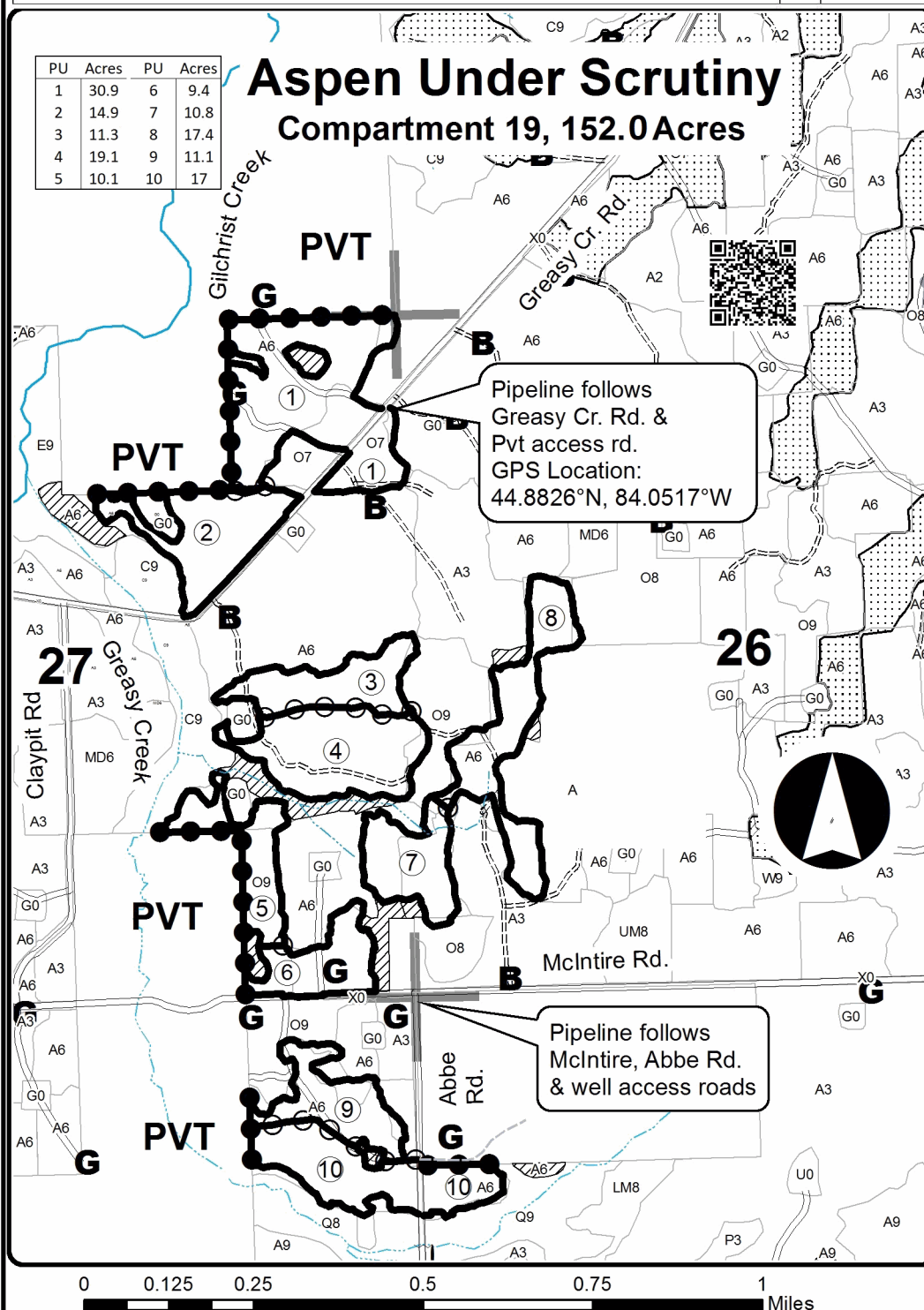
Density

0 = Non Stocked	5 = Pole Timber Medium
1 = Seedling Sapling Poor	6 = Pole Timber Well
2 = Seedling Sapling Medium	7 = Saw Timber Poor
3 = Seedling Sapling Well	8 = Saw Timber Medium
4 = Pole Timber Poor	9 = Saw Timber Well

PU	Acres	PU	Acres
1	30.9	6	9.4
2	14.9	7	10.8
3	11.3	8	17.4
4	19.1	9	11.1
5	10.1	10	17

Aspen Under Scrutiny

Compartment 19, 152.0 Acres



Legend

- Against State (Red)
- Payment Unit (Yellow)
- Private Line (Blue)
- ▨ Retention Area
- ▤ Nearby Timber Sales
- Stand Boundaries
- Unpaved Road
- == Closed Road
- - Private Road
- G** Gate
- B** Berm
- Drain
- Intermittent Stream
- Perennial River
- Section Corners

Locator Map
1:200,000