



**DEPARTMENT OF NATURAL RESOURCES  
STATE OF MICHIGAN**

**TIMBER SALE PROSPECTUS #7041**

SCHEDULED SALE DATE AND TIME: 10:00 a.m. (local time) on April 19, 2022.

LOCATION: ATLANTA MGMT UNIT, 13501 M 33, ATLANTA, MI 49709.

CONTACT NAME: Cody Stevens

PHONE NUMBER: (989) 785-4251

PROSPECTUS NOTE: The bidder is advised to inspect the sale area and review the location, estimated volumes, operating costs and contract terms of proposed sales. Please be aware that some landowners may request 60 days or more notice for access across their land.

Notice is hereby given that bids will be received by the Unit Manager, ATLANTA MANAGEMENT UNIT, for certain timber on the following described lands:

489 and Scenic Route 3 RP (54-003-21) / T30N, R02E, SEC. 28, SWSE.

T30N, R02E, SEC. 31, N1/2SE.

Montmorency County, Advertised Price \$67,940.20, 24.3 Acres, Aspen, Red Pine.

SALE NOTE: All units of volume listed for this sale were estimated using the Inventory Manager computer program and the new Michigan taper model.

A recreation site such as a trail, pathway, or campground is within the sale area or the vicinity. Certain restrictions/specifications may be applicable including time restrictions.

## TIMBER SALE INFORMATION

489 and Scenic Route 3 RP (54-003-21)  
T30N, R02E, SEC. 28; T30N, R02E, SEC. 31.  
Montmorency County (Advertised Price \$67,940.20)

SALE NOTE: All units of volume listed for this sale were estimated using the Inventory Manager computer program and the new Michigan taper model.

A recreation site such as a trail, pathway, or campground is within the sale area or the vicinity. Certain restrictions/specifications may be applicable including time restrictions.

A timber sale contract for this lump sum, sealed bid timber sale will be awarded to the responsible bidder offering the highest sealed bid price. All units of volume listed below were estimated using the Inventory Manager computer program and the new Michigan taper model. Bids must be at or above the following advertised price for each product and species:

<u>PRODUCTS &amp; SPECIES</u>	<u>ESTIMATED UNITS*</u>	<u>ADVERTISED PRICE</u>
Sawtimber		
B. T. Aspen	1.8 MBF	\$ 126.00 / MBF
Black Cherry	1.3 MBF	\$ 128.00 / MBF
Red Maple	1.9 MBF	\$ 56.00 / MBF
Red Pine	385.4 MBF	\$ 129.00 / MBF
Pulpwood		
B. T. Aspen	85 Cords	\$ 30.35 / Cord
Black Cherry	45 Cords	\$ 25.70 / Cord
Northern Pin Oak	3 Cords	\$ 45.80 / Cord
Quaking Aspen	3 Cords	\$ 30.35 / Cord
Red Maple	9 Cords	\$ 25.70 / Cord
Red Pine	390 Cords	\$ 34.10 / Cord
White Oak	5 Cords	\$ 45.80 / Cord

\* The total volume is statistically estimated within plus (+) or minus (-) 11.51 percent. There are an estimated 1,408 cords on this timber sale, plus or minus 162 cords at the 95% confidence level. The estimated units are final and not subject to adjustment. Prospective bidders are urged to examine this timber and to make their own estimates of quantity and quality.

### **BOND AND PAYMENT SCHEDULE:**

1. A bond in the amount of \$3,397.01 to insure faithful performance of the conditions of the contract will be deposited by the successful bidder within 21 days of the sale award.
2. Cutting in any sale or unit without the required advance payment would be considered a trespass.
3. Total payment must be paid in advance or according to the following schedule :
  - (a) Ten percent (10%) of the sale value must be paid within 21 days of the sale award.
  - (b) The 10% down payment will be credited towards the first unit cut.
  - (c) Payment for each of the following units must be made before cutting begins in that unit:

PAYMENT UNIT NUMBER	PERCENT OF TOTAL SALE VALUE
01	73.5%
02	26.5%
4. If no cutting takes place, the 10% down payment will not be refunded.
5. Operations on the contract issued will terminate on 12/31/2024.

### **SALE STATISTICS**

Volumes were calculated in cubic feet using the Michigan taper model. Cubic foot volume includes all wood inside bark for the product indicated. For display purposes, cubic feet were converted to cords and MBF using a simple conversion factor, e.g. 79 cubic feet per cord and 185 cubic feet per MBF. The cubic foot volumes are precise; the cords and MBF volumes are not. Cubic foot volume cannot be directly converted to cords or boards with precision.

### **SALE VOLUMES**

The total estimated sale volume may not equal the sum of the species/products due to the nature of statistical calculations associated with double sampling methodology.

VOLUME			STATISTICAL RANGE IN CORDS	
TOTAL CUBIC FEET	TOTAL CORDS	PERCENT ERROR	MINIMUM	MAXIMUM
111,271	1,408	11.51%	1,246	1,571

## VDU VOLUMES

A VDU is a Volume Determination Unit. Volumes and their associated statistics are calculated at the VDU level and summarized to the sale level. There is often a one to one relationship between a VDU and a Payment Unit, but not always, depending on the cruise design. Refer to the VDU TO PAYMENT UNIT table.

	VOLUME			RANGE IN CORDS	
VDU	TOTAL CUBIC FEET	TOTAL CORDS	PERCENT ERROR	MINIMUM	MAXIMUM
83	29,195	370	15.07%	314	425
94	75,172	952	14.56%	813	1,090
<b>TOTAL:</b>	<b>104,367</b>	<b>1,321</b>		<b>1,127</b>	<b>1,515</b>

## VDU TO PAYMENT UNIT

When a VDU is associated with more than one Payment Unit (PU), the VDU volumes are assigned to the PU based on acres of the VDU within the PU.

VDU	VDU ACRES	PU	PU ACRES
83	7.3	2	7.3
94	17.0	1	17.0
<b>TOTAL:</b>	<b>24.3</b>		<b>24.3</b>

## DESCRIPTION OF TIMBER BY PU (PU)

PU	MARKET GROUP	PRODUCT	QUANTITY	UNIT	ACRES	ADVERTISE PRICE
1	Black Cherry	Sawtimber	1.3	MBF	17.0	\$49,946.20
	Red Pine		292.6	MBF		
	Black Cherry	Pulpwood	45	Cords		
	Red Pine		319	Cords		
2	B. T. Aspen	Sawtimber	1.8	MBF	7.3	\$17,994.00
	Red Maple		1.9	MBF		
	Red Pine		92.8	MBF		
	B. T. Aspen	Pulpwood	85	Cords		
	Northern Pin Oak		3	Cords		
	Quaking Aspen		3	Cords		
	Red Maple		9	Cords		
	Red Pine		71	Cords		
	White Oak		5	Cords		
	TOTAL:			390.4		
TOTAL:			540	Cords		

## **Sale Specific Conditions & Requirements**

**Sale Name: 489 and Scenic Route 3 RP**

**Sale Number: 54-003-21 Seq#: 1**

### **1 - Sale Area**

#### **1.2 - Boundaries**

##### **1.2.1 - Painted boundaries (9/19)**

The sale boundaries are marked and identified by blue and/or red paint. Exterior sale boundary lines against private are marked with blue paint. Exterior sale boundary lines against state are marked with red paint. Interior retention boundaries are marked with red paint; no harvesting activities may occur within these areas. The painted boundary line trees are not Included Timber and are to be protected.

### **2 - Timber Specifications**

#### **2.1 - Included Timber**

##### **2.1.1 - Clearcut unit(s) with unmerchantable trees (6/14)**

Within Payment Unit(s) 1 and 2, cut all trees that are two (2) inches or more at DBH.

#### **2.2 - Utilization**

##### **2.2.2 - Chipping required (2/18)**

Payment Units 1 and 2 must be chip harvested to facilitate future silvicultural activities. The Purchaser has the option to produce sawlogs or pulpwood bolts, but the remaining portion of the trees must be chipped and hauled. Products may be produced as roundwood and forwarded to decking areas in final product length, but the tops must be left intact and skidded to the landing for chipping to minimize the amount of residual slash. If market conditions limit the practicality of chipping the following is required: Tops must be cut into lengths 4 feet or less and trees greater than 4 inches at DBH must be cut to a 2-inch top or smaller. Sub-merchantable trees, and hardwood limbs 4 inches or greater where they attach to the stem, are to be cut/reduced to 4-foot lengths. Tops and slash must also be spread evenly across the sale. This is to speed the breakdown of tops and slash. The requirement to retain approximately 1/6 to 1/3 of tree tops and limbs less than four inches in diameter is still applicable (G. C. & R. 2.2).

##### **2.2.3 - Stump heights (4/07)**

Stump heights within Payment Units 1 and 2 shall not exceed 6 inches for all trees. This is to facilitate future silvicultural activities. A written waiver of this requirement may be obtained if wet summer weather makes winter logging necessary.

### **4 - Transportation**

#### **4.1 - Construction**

##### **4.1.3 - Slash and earthen piles (8/04)**

Piles or windrows of earth along roads and landings that have been widened or constructed shall be leveled. Slash from road maintenance or construction, including stumps, shall be chipped, utilized, or otherwise removed from the sale.

##### **4.1.12 - No new roads (1/12)**

No new roads will be permitted in any Payment Unit. All operations are limited to existing roads. Skid trails only will be allowed.

#### **4.2 - Maintenance**

##### **4.2.5 - Two wheel drive condition (2/04)**

All existing trail roads on and adjacent to the sale area must be passable by two-wheel drive traffic for the duration of the sale.

### **5 - Operations**

#### **5.1 - Notification**

#### 5.1.1 - Pre-sale conference (10/16)

A pre-sale conference between the Purchaser and sale administrator is required prior to beginning any operations to determine landing and road locations. The Unit Manager or his/her representative must be contacted at least 5 days in advance to schedule the conference.

#### 5.1.3 - Well heads and natural gas pipelines (11/15)

The Purchaser is responsible for contacting the following parties 30 days prior to operating equipment in the vicinity of well heads or natural gas pipelines.

(All Payment Units)

Riverside Energy Michigan

10691 E Carter Rd, Suite 201

Traverse City, MI 49684

Phone: (231) 995-4000 (M-F, 8am-5pm)

#### 5.1.4 - Post-sale conference (10/16)

A post-sale conference on site between the Purchaser and sale administrator is required 5 days prior to the completion of active logging operations to determine clean-up and repair of landings, road edges, and the fulfillment of other contract specifications.

#### 5.1.6 - Utility R.O.W. (4/19)

It is the responsibility of the Purchaser to obtain permission from the utility company to utilize the power line R.O.W. for operations. Contact:

Presque Isle Electric and Gas Cooperative

19831 M-68 Highway

PO Box 308

Onaway, MI 49765-0308

Phone: 1-800-423-6634 (Hours of Operation: Monday-Friday 8:00am-4:30pm)

### 5.2 - Conduct of Operations

#### 5.2.3 - Operating Restrictions

##### 5.2.3.6 - Bark beetle restriction (12/08)

In the event drought creates a high risk of pine bark beetle infestation, pine is not to be cut during the period March 1 through July 1, unless all portions of trees greater than two inches in diameter are removed from the sale area, reduced to chips, or treated to the satisfaction of the Unit Manager or his/her representative, within fifteen days of being severed from the stump. Pine log decks, pulpwood piles and treetops that are piled for chipping in the fall or winter within a 1/4 mile of susceptible sites must be removed before March 15. Residual slash must not be placed in piles or rows and must be spread over the site for quick drying. The Department of Natural Resources will exercise this specification if the risk of damage warrants.

#### 5.2.31 - Landing locations (9/13)

Landing locations are shown on the Timber Sale Map. Landings must be confined to these designated sites unless otherwise authorized by the Unit Manager or his/her representative.

#### 5.2.32 - Decking/landing restoration (9/13)

All decking and landing areas must have the surface area restored to a condition equal to or better than before. This is to ensure the proper regeneration of the stand. Wood debris, chips, and "cookies" from trimmings must be removed or scattered away from landing and loading areas and may not be windrowed on the edge.

#### 5.2.38 - No decking against live trees (2/04)

Cut products may not be decked against unmarked or designated leave trees.

#### 5.2.39 - ORV trail/route protection (4/18)

The Atlanta to Hunt Creek Motorcycle MCCCT is shown on the Timber Sale Map. Do not cut trees or damage posts with yellow ORV markers. Maintain a 20-foot-wide slash, debris, and rut free zone daily using the ORV trail or route as the centerline.

## 5.4 - Soil Protection

### 5.4.1 - Rutting restriction, general (7/16)

Operations are to cease immediately if equipment and weather conditions result in rutting of roads and/or skid trails which is 12 inches or greater in depth and 50 feet in length. The Unit Manager or his/her representative may restrict hauling and/or skidding if ruts exceed the specified depth. With the Unit Manager or his/her representative's approval, the Purchaser may return to the area when the risk of rutting has decreased.

## 5.8 - Protection of Endangered Species

### 5.8.5 - Protection of raptor nests (3/13)

All trees with raptor nests will be protected if found during harvesting operations. Notification will be made to the Unit Manager or his/her representative who will notify the Wildlife Biologist so an on-site evaluation and recommendation can be made, if necessary.

## 6 - Safety and Fire Prevention

### 6.2 - Signing

#### 6.2.3 - Recreational trail posting (10/20)

The Purchaser is responsible for posting and maintaining caution signs on the Atlanta to Hunt Creek Motorcycle MCCCT prior to beginning operations. The trail must be posted at appropriate distances from the Sale Area to warn of logging activity and truck traffic at both ends of the trail. Signs must be removed when harvest operations are suspended or completed. The Purchaser will provide these signs.

**TIMBER SALE MAP**

This information provided by authority of Part 525, 1994 PA 451, as amended.

Sale Number	Year
54 - 003	21

Forest Management Unit Atlanta Management Unit	County Montmorency	Mapped By Coy	Date 4/26/2021	Page 1	of 2
		Cruised By Coy			

Township 30N	Range 02E	Section(s) and Subdivision(s) 28-SWSE 31-N1/2SE	Scale 1:7,920
-----------------	--------------	--	------------------

Cover Type				Density	
A = Aspen	H = Hemlock	N = Marsh	U = Upland Brush	0 = Non Stocked	5 = Pole Timber Medium
B = Paper Birch	J = Jack Pine	O = Oak	UM = Upland Mixed	1 = Seedling Sapling Poor	6 = Pole Timber Well
C = Cedar	L = Lowland Brush	P = Lowland Poplar	V = Bog or Marsh	2 = Seedling Sapling Medium	7 = Saw Timber Poor
D = Treed Bog	LM = Lowland Mixed	Q = Mixed Swamp Conifer	W = White Pine	3 = Seedling Sapling Well	8 = Saw Timber Medium
E = Swamp Hdwoods	M = Mpl, Bch, Brch	R = Red Pine	X = Non Stocked	4 = Pole Timber Poor	9 = Saw Timber Well
F = Spruce Fir	MC = Mixed Conifer	S = Black Spruce	Z = Water		
G = Grass	MD = Mixed Deciduous	T = Tamarack			

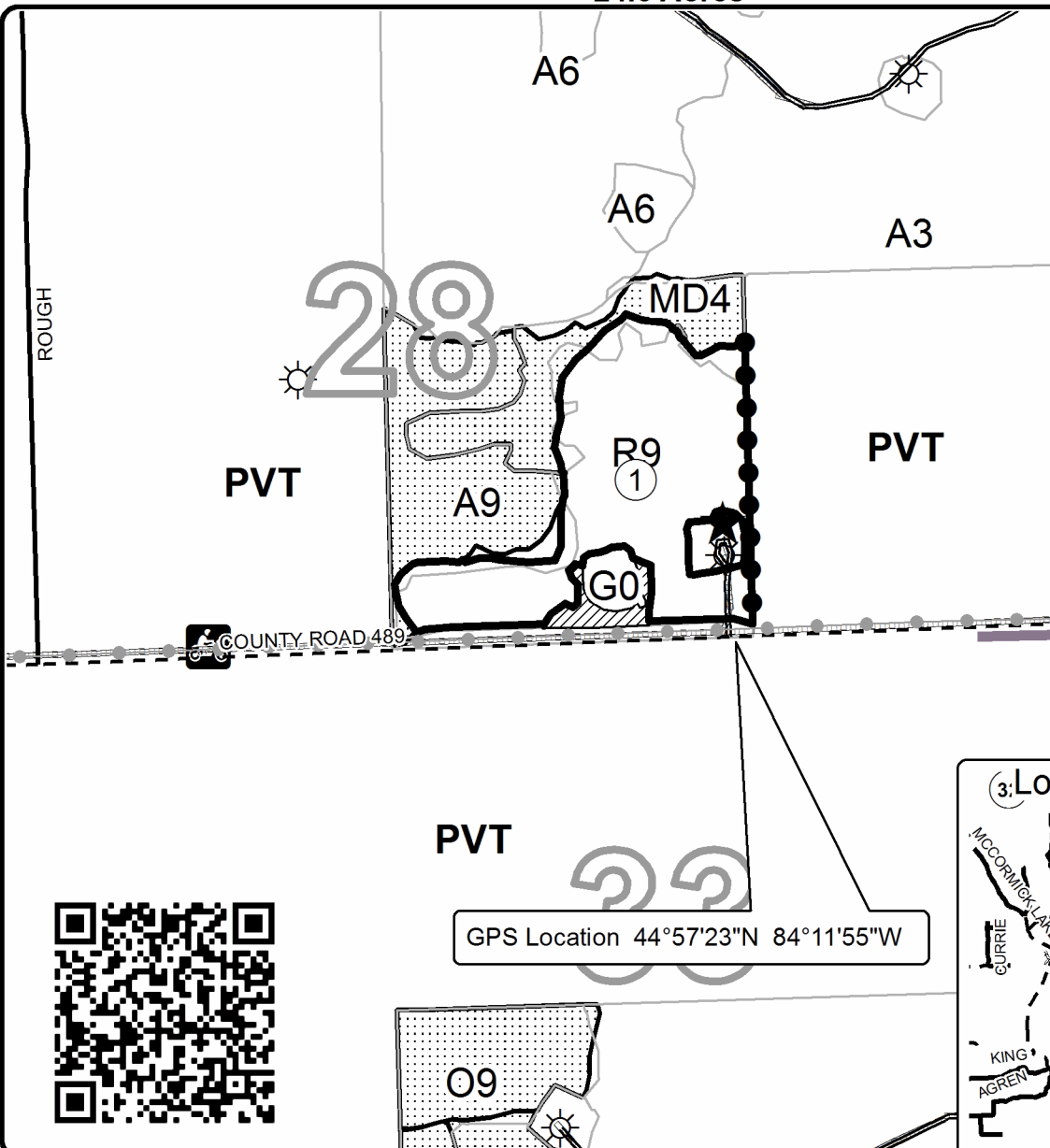
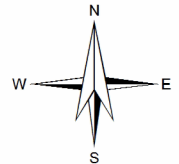
**PU Acres**

1	17.0
2	7.3

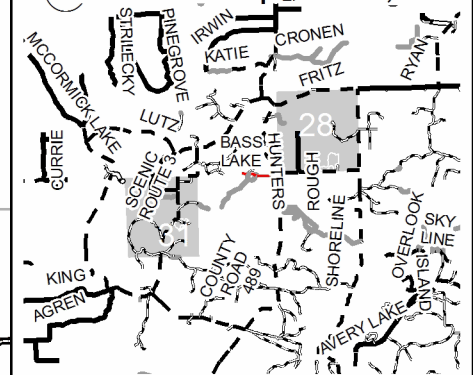
**489 and Scenic Route 3 RP**

Compartment 23

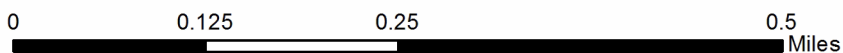
24.3 Acres

**Legend**

- Against State (Red)
- Private Line (Blue)
- ▨ Retention Area (Red)
- Stand Boundaries
- Nearby Timber Sales
- ★ Landing
- Payment Unit
- ☀ Gas Well
- Section Corner
- Recreational Trail
- Secondary Forest Road
- Paved Road
- - Gravel Road
- Pipeline

**Locator Map 1:150,000**

GPS Location 44°57'23"N 84°11'55"W





## TIMBER SALE MAP

This information provided by authority of Part 525, 1994 PA 451, as amended.

Sale Number

54 - 003

Year

21

Forest Management Unit  
Atlanta Management UnitCounty  
MontmorencyMapped By Coy  
Cruised By Coy

Date

04/19/2021

Page

2

of

2

Township  
30NRange  
02ESection(s) and Subdivision(s)  
28-SWSE 31-N1/2SE

Scale

1:7,920

## Cover Type

A = Aspen  
B = Paper Birch  
C = Cedar  
D = Treed Bog  
E = Swamp Hdwoods  
F = Spruce Fir  
G = GrassH = Hemlock  
J = Jack Pine  
L = Lowland Brush  
LM = Lowland Mixed  
M = Mpl, Bch, Brch  
MC = Mixed Conifer  
MD = Mixed DeciduousN = Marsh  
O = Oak  
P = Lowland Poplar  
Q = Mixed Swamp Conifer  
R = Red Pine  
S = Black Spruce  
T = TamarackU = Upland Brush  
UM = Upland Mixed  
V = Bog or Marsh  
W = White Pine  
X = Non Stocked  
Z = Water

## Density

0 = Non Stocked  
1 = Seedling Sapling Poor  
2 = Seedling Sapling Medium  
3 = Seedling Sapling Well  
4 = Pole Timber Poor5 = Pole Timber Medium  
6 = Pole Timber Well  
7 = Saw Timber Poor  
8 = Saw Timber Medium  
9 = Saw Timber Well

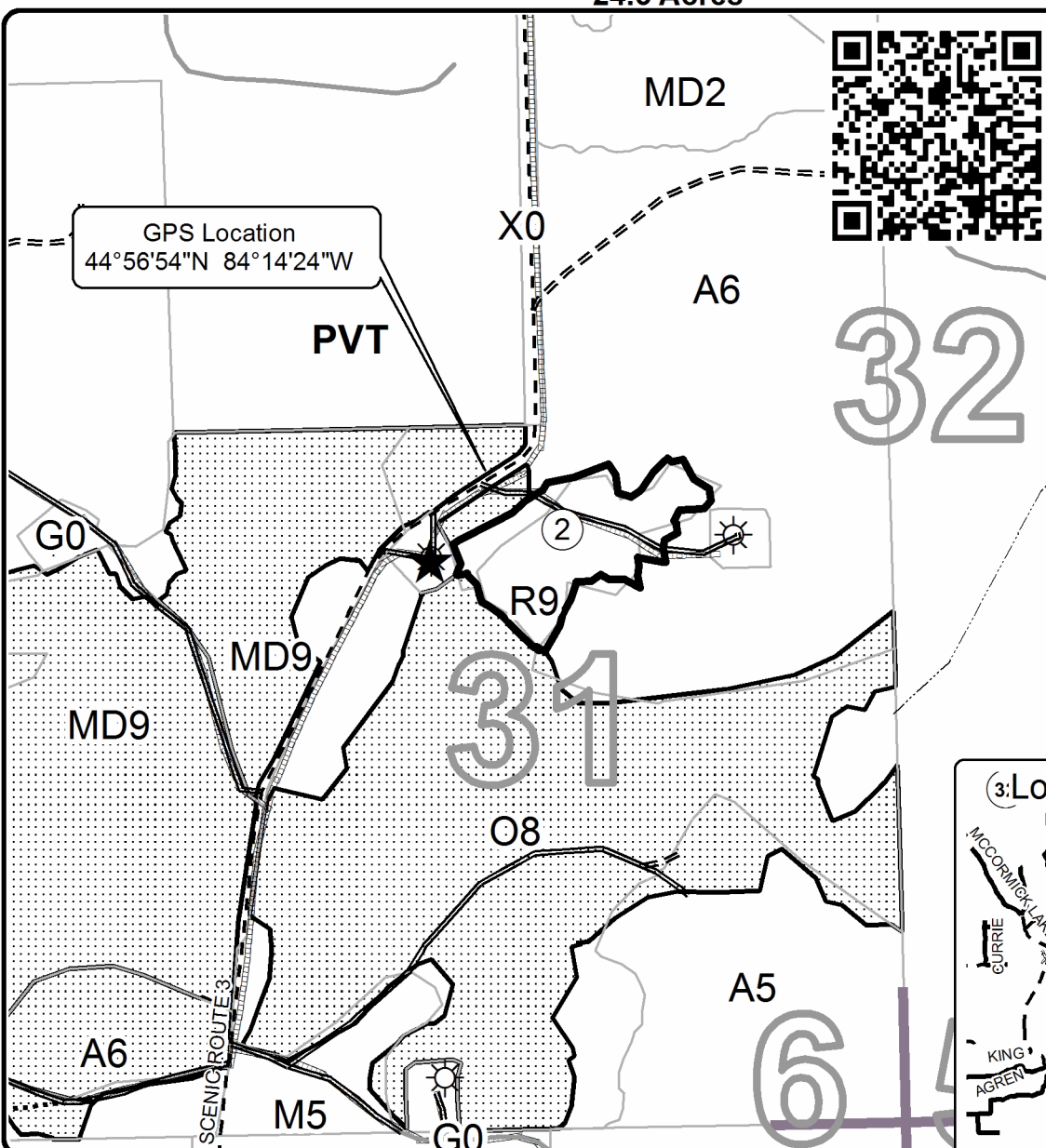
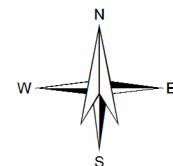
## PU Acres

1 17.0  
2 7.3

## 489 and Scenic Route 3 RP

Compartment 23

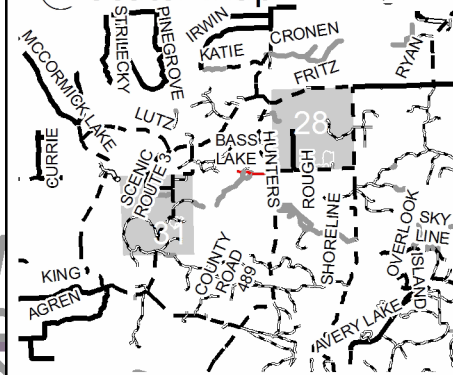
24.3 Acres



## Legend

- Against State (Red)
- Stand Boundaries
- ▤ Nearby Timber Sales
- ★ Landing
- Payment Unit
- ☀ Gas Well
- Section Corner
- Secondary Forest Road
- == Forest Access Route
- - Gravel Road
- Private Road
- .... Temporary Access
- ▤ Pipeline
- Perennial River

## (3) Locator Map at 1:150,000



0 0.125 0.25 0.5 Miles