



**DEPARTMENT OF NATURAL RESOURCES  
STATE OF MICHIGAN**

**TIMBER SALE PROSPECTUS #6953**

SCHEDULED SALE DATE AND TIME: **4:00 p.m. (local time) on December 13, 2021.**

LOCATION: **KALKASKA FIELD OFFICE, 2089 NORTH BIRCH STREET, KALKASKA, MI 49646.**

CONTACT NAME: David Lemmien

PHONE NUMBER: (231) 922-6040

PROSPECTUS NOTE: Effective immediately: all bid openings for the Traverse City Management (Kalkaska Field Office and Traverse City Field Office) will be held at the Traverse City Field Office regardless of sale location within the unit. All payments will now be handled through the Traverse City Field Office. The Kalkaska Field Office will no longer accept payments or hard paper copies of timber sale bids. Payments for all contracts, use permits, bonds, etc. should be sent to the Traverse City Field Office.

The bidder is advised to inspect the sale area and review the location, estimated volumes, operating costs and contract terms of proposed sales. Please be aware that some landowners may request 60 days or more notice for access across their land.

Notice is hereby given that bids will be received by the Unit Manager, TRAVERSE CITY MANAGEMENT UNIT, for certain timber on the following described lands:

Release The Trees (61-126-21) / T26N, R08W, SEC. 16, NWNW.

T26N, R08W, SEC. 17, NENE.

T26N, R08W, SEC. 18, NE, E1/2SE.

T26N, R08W, SEC. 8, SESE.

Kalkaska County, Advertised Price \$37,697.95, 126.4 Acres, Red Pine, White Pine.

SALE NOTE: All units of volume listed for this sale were estimated using the Inventory Manager computer program and the new Michigan taper model.

## TIMBER SALE INFORMATION

### Release The Trees (61-126-21)

T26N, R08W, SEC. 16; T26N, R08W, SEC. 17; T26N, R08W, SEC. 18; T26N, R08W, SEC. 8.  
Kalkaska County (Advertised Price \$37,697.95)

SALE NOTE: All units of volume listed for this sale were estimated using the Inventory Manager computer program and the new Michigan taper model.

A timber sale contract for this lump sum, sealed bid timber sale will be awarded to the responsible bidder offering the highest sealed bid price. All units of volume listed below were estimated using the Inventory Manager computer program and the new Michigan taper model. Bids must be at or above the following advertised price for each product and species:

<u>PRODUCTS &amp; SPECIES</u>	<u>ESTIMATED UNITS*</u>	<u>ADVERTISED PRICE</u>
Sawtimber		
Red Oak	109.2 MBF	\$ 117.00 / MBF
Red Pine	139.6 MBF	\$ 80.00 / MBF
White Pine	149.4 MBF	\$ 35.00 / MBF
Pulpwood		
Red Oak	91 Cords	\$ 13.05 / Cord
Red Pine	169 Cords	\$ 31.40 / Cord
White Pine	144 Cords	\$ 14.10 / Cord

\* The total volume is statistically estimated within plus (+) or minus (-) 7.23 percent. There are an estimated 1,327 cords on this timber sale, plus or minus 96 cords at the 95% confidence level. The estimated units are final and not subject to adjustment. Prospective bidders are urged to examine this timber and to make their own estimates of quantity and quality.

### **BOND AND PAYMENT SCHEDULE:**

1. A bond in the amount of \$1,884.90 to insure faithful performance of the conditions of the contract will be deposited by the successful bidder within 21 days of the sale award.
2. Cutting in any sale or unit without the required advance payment would be considered a trespass.
3. Total payment must be paid in advance or according to the following schedule:
  - (a) Ten percent (10%) of the sale value must be paid within 21 days of the sale award.
  - (b) The 10% down payment will be credited towards the first unit cut.
  - (c) Payment for each of the following units must be made before cutting begins in that unit:

PAYMENT UNIT NUMBER	PERCENT OF TOTAL SALE VALUE
01	41.5%
02	10.4%
03	48.1%
4. If no cutting takes place, the 10% down payment will not be refunded.
5. Operations on the contract issued will terminate on 12/31/2024.

### **SALE STATISTICS**

Volumes were calculated in cubic feet using the Michigan taper model. Cubic foot volume includes all wood inside bark for the product indicated. For display purposes, cubic feet were converted to cords and MBF using a simple conversion factor, e.g. 79 cubic feet per cord and 185 cubic feet per MBF. The cubic foot volumes are precise; the cords and MBF volumes are not. Cubic foot volume cannot be directly converted to cords or boards with precision.

### **SALE VOLUMES**

The total estimated sale volume may not equal the sum of the species/products due to the nature of statistical calculations associated with double sampling methodology.

VOLUME			STATISTICAL RANGE IN CORDS	
TOTAL CUBIC FEET	TOTAL CORDS	PERCENT ERROR	MINIMUM	MAXIMUM
104,856	1,327	7.23%	1,231	1,423

## VDU VOLUMES

A VDU is a Volume Determination Unit. Volumes and their associated statistics are calculated at the VDU level and summarized to the sale level. There is often a one to one relationship between a VDU and a Payment Unit, but not always, depending on the cruise design. Refer to the VDU TO PAYMENT UNIT table.

VDU	VOLUME		PERCENT ERROR	RANGE IN CORDS	
	TOTAL CUBIC FEET	TOTAL CORDS		MINIMUM	MAXIMUM
9	29,217	370	16.91%	307	432
15	12,739	161	11.64%	142	180
40	41,040	519	8.88%	473	566
86	11,823	150	24.69%	113	187
<b>TOTAL:</b>	<b>94,818</b>	<b>1,200</b>		<b>1,036</b>	<b>1,365</b>

## VDU TO PAYMENT UNIT

When a VDU is associated with more than one Payment Unit (PU), the VDU volumes are assigned to the PU based on acres of the VDU within the PU.

VDU	VDU ACRES	PU	PU ACRES
9	53.7	1	53.7
15	21.4	2	21.4
40	33.8	3	33.8
86	17.5	1	17.5
<b>TOTAL:</b>	<b>126.4</b>		<b>126.4</b>

## DESCRIPTION OF TIMBER BY PU (PU)

PU	MARKET GROUP	PRODUCT	QUANTITY	UNIT	ACRES	ADVERTISE PRICE
1	Red Oak	Sawtimber	2.6	MBF	71.2	\$15,633.45
	Red Pine		106.5	MBF		
	White Pine		32.0	MBF		
	Red Oak	Pulpwood	5	Cords		
	Red Pine		136	Cords		
	White Pine		96	Cords		
2	Red Oak	Sawtimber	9.2	MBF	21.4	\$3,930.25
	Red Pine		11.1	MBF		
	White Pine		36.8	MBF		
	Red Oak	Pulpwood	35	Cords		
	Red Pine		3	Cords		
	White Pine		9	Cords		
3	Red Oak	Sawtimber	97.4	MBF	33.8	\$18,134.25
	Red Pine		22.0	MBF		
	White Pine		80.6	MBF		
	Red Oak	Pulpwood	51	Cords		
	Red Pine		30	Cords		
	White Pine		39	Cords		
TOTAL:			398.2	MBF		
TOTAL:			404	Cords		

## **Sale Specific Conditions & Requirements**

**Sale Name: Release The Trees**

**Sale Number: 61-126-21 Seq#: 1**

### **1 - Sale Area**

#### **1.2 - Boundaries**

##### **1.2.1 - Painted boundaries (9/19)**

The sale boundary and Payment Unit boundaries are marked and identified by blue and red paint. Exterior sale boundary lines against private property are marked with blue paint. Exterior sale boundary lines against state are marked with red paint. Retention patches are marked with red paint; no harvesting activities may occur within these areas. The painted boundary line trees are not Included Timber and are to be protected unless marked with orange paint.

### **2 - Timber Specifications**

#### **2.1 - Included Timber**

##### **2.1.5 - Overstory removal unit(s) (8/11)**

Within Payment Unit(s) 1-3, all trees greater than or equal to 6 inches which meet minimum piece specifications in 2.2 Utilization, are designated for cutting, except green marked trees and white oak.

#### **2.2 - Utilization**

##### **2.2.6 - Roundwood operation required (3/21)**

The skidding of whole trees or tree segments with limbs attached is prohibited within Payment Units 1-3. All products must be produced as roundwood and forwarded to existing roads or landing areas in final product length.

### **4 - Transportation**

#### **4.1 - Construction**

##### **4.1.6 - Road construction (1/09)**

Improvement of existing roads shall be done in such a way as to minimize the environmental and visual impacts. Merchantable trees shall be cut and utilized unless otherwise directed. Non-merchantable trees shall be severed and laid flat on the ground. Slash shall be scattered, and not left in windrows and kept a minimum of 10 feet back from the road edge. Stumps shall be set upright, not left on edge, and be moved at least 10 feet away from the road edge. Disturbed soil shall be feathered into the woods and not left in berms or windrows.

#### **4.2 - Maintenance**

##### **4.2.5 - Two wheel drive condition (2/04)**

All existing trail roads on and adjacent to the sale area must be passable by two-wheel drive traffic for the duration of the sale.

### **5 - Operations**

#### **5.1 - Notification**

##### **5.1.1 - Pre-sale conference (10/16)**

A pre-sale conference on site between the Purchaser and sale administrator is required prior to beginning any operations to determine landing and road locations. The Unit Manager or his/her representative must be contacted at least 5 days in advance to schedule the conference.

##### **5.1.4 - Post-sale conference (10/16)**

A post-sale conference on site between the Purchaser and sale administrator is required 5 days prior to the completion of active logging operations to determine clean-up and repair of landings, road edges, and the fulfillment of other contract specifications.

#### **5.2 - Conduct of Operations**

#### 5.2.1 - Slash

##### 5.2.1.8 - Slash height (12/08)

No slash or tree tops may exceed 24 inches in height.

#### 5.4 - Soil Protection

##### 5.4.1 - Rutting restriction, general (7/16)

Operations are to cease immediately if equipment and weather conditions result in rutting of roads and/or skid trails which is 12 inches or greater in depth and 50 feet in length. The Unit Manager or his/her representative may restrict hauling and/or skidding if ruts exceed the specified depth. With the Unit Manager or his/her representative's approval, the Purchaser may return to the area when the risk of rutting has decreased.

**TIMBER SALE MAP**

This information provided by authority of Part 525, 1994 PA 451 as amended.

Sale Number	Year
61-126	21

Forest Management Unit Traverse City Unit	County Kalkaska	Mapped By Roell	Date 08/25/2021	Page 1	of 1
Township N26	Range 08W	Section(s) and Subdivision(s) NWNW Sec 16; NENE Sec17; E1/2SE, NE Sec18	Cruised By Roell	Scale 1:15,840	

**Cover Type**

A = Aspen	H = Hemlock	N = Marsh	U = Upland Brush
B = Paper Birch	J = Jack Pine	O = Oak	UM = Upland Mixed
C = Cedar	L = Lowland Brush	P = Lowland Poplar	V = Bog or Marsh
D = Treed Bog	LM = Lowland Mixed	Q = Mixed Swamp Conifer	W = White Pine
E = Swamp Hardwoods	M = Mpl. Ech. Birch	R = Red Pine	X = Non Stocked
F = Spruce Fir	MC = Mixed Conifer	S = Black Spruce	Z = Water
G = Cress	MD = Mixed Deciduous	T = Tamarack	

**Density**

0 = Non Stocked	5 = Pole Timber Medium
1 = Seedling Sapling Poor	6 = Pole Timber Well
2 = Seedling Sapling Medium	7 = Saw Timber Poor
3 = Seedling Sapling Well	8 = Saw Timber Medium
4 = Pole Timber Poor	9 = Saw Timber Well

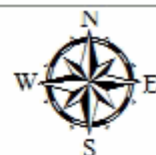
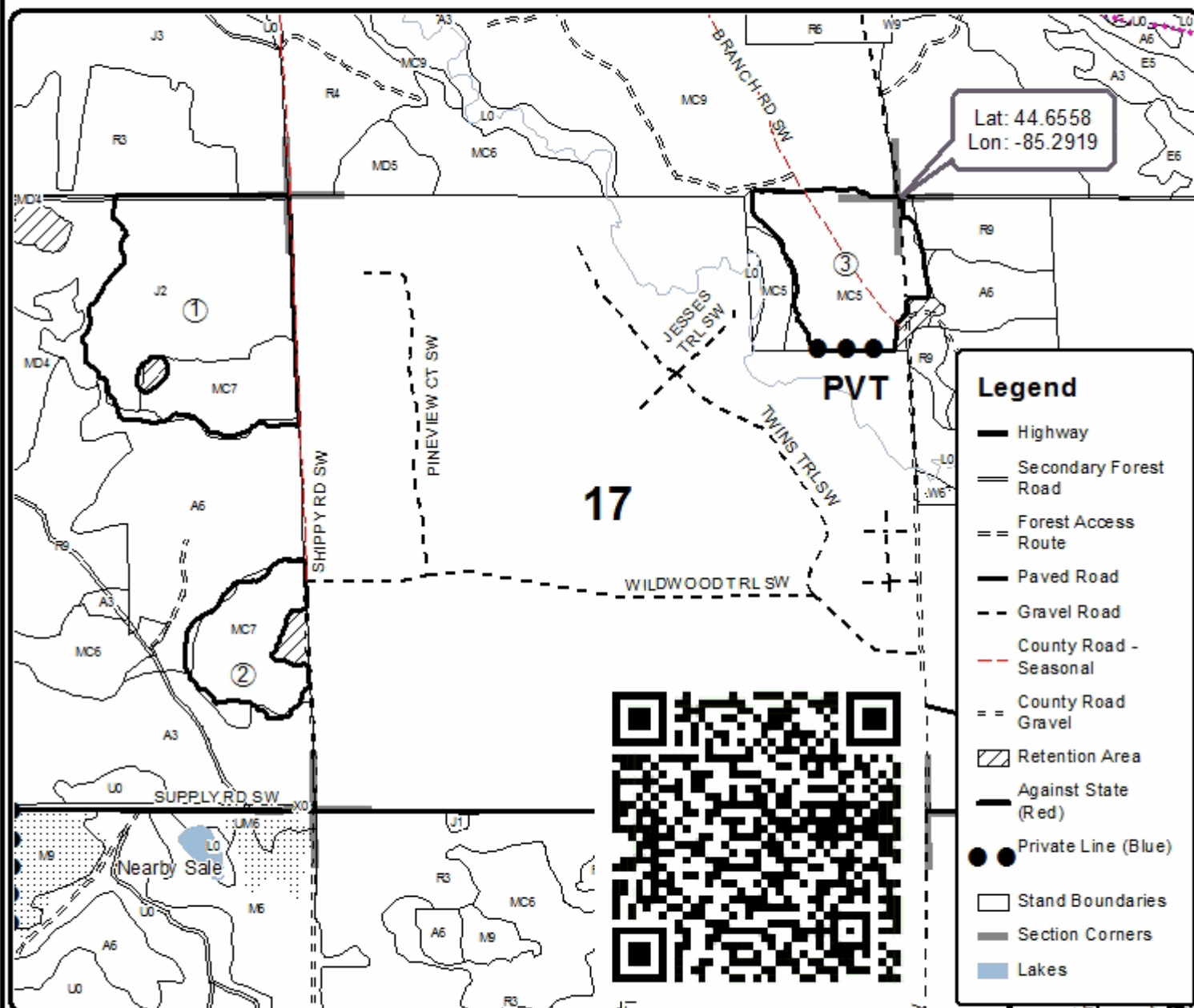
**PU Acres**

1	71.2
2	21.4
3	33.8

**Release The Trees**

Compartment 154

126.3 Acres

Lat: 44.6558  
Lon: -85.2919**Legend**

- Highway
- Secondary Forest Road
- Forest Access Route
- Paved Road
- Gravel Road
- County Road - Seasonal
- County Road Gravel
- Retention Area
- Against State (Red)
- Private Line (Blue)
- Stand Boundaries
- Section Corners
- Lakes