



**DEPARTMENT OF NATURAL RESOURCES  
STATE OF MICHIGAN**

**TIMBER SALE PROSPECTUS #6973**

SCHEDULED SALE DATE AND TIME: 4:00 p.m. (local time) on December 20, 2021.

LOCATION: TRAVERSE CITY MGMT UNIT, 2122 M 37 SOUTH, TRAVERSE CITY, MI 49685.

CONTACT NAME: David Lemmien

PHONE NUMBER: (231) 922-6040

PROSPECTUS NOTE: Effective immediately: all bid openings for the Traverse City Management (Kalkaska Field Office and Traverse City Field Office) will be held at the Traverse City Field Office regardless of sale location within the unit. All payments will now be handled through the Traverse City Field Office. The Kalkaska Field Office will no longer accept payments or hard paper copies of timber sale bids. Payments for all contracts, use permits, bonds, etc. should be sent to the Traverse City Field Office.

The bidder is advised to inspect the sale area and review the location, estimated volumes, operating costs and contract terms of proposed sales. Please be aware that some landowners may request 60 days or more notice for access across their land.

Notice is hereby given that bids will be received by the Unit Manager, TRAVERSE CITY MANAGEMENT UNIT, for certain timber on the following described lands:

Niblick Hardwood (61-031-21) / T26N, R10W, SEC. 31, N1/2NW,SWNW,NWNE,N1/2SW,SESW.  
Grand Traverse County, Advertised Price \$44,104.95, 89.0 Acres, Aspen, Hardwood.

SALE NOTE: All units of volume listed for this sale were estimated using the Inventory Manager computer program and the new Michigan taper model.

## TIMBER SALE INFORMATION

Niblick Hardwood (61-031-21)

T26N, R10W, SEC. 31.

Grand Traverse County (Advertised Price \$44,104.95)

SALE NOTE: All units of volume listed for this sale were estimated using the Inventory Manager computer program and the new Michigan taper model.

A timber sale contract for this lump sum, sealed bid timber sale will be awarded to the responsible bidder offering the highest sealed bid price. All units of volume listed below were estimated using the Inventory Manager computer program and the new Michigan taper model. Bids must be at or above the following advertised price for each product and species:

<u>PRODUCTS &amp; SPECIES</u>	<u>ESTIMATED UNITS*</u>	<u>ADVERTISED PRICE</u>
Sawtimber		
Basswood	88.8 MBF	\$ 89.00 / MBF
Beech	14.9 MBF	\$ 77.00 / MBF
Black Cherry	6.3 MBF	\$ 147.00 / MBF
Mixed Aspen	38.3 MBF	\$ 90.00 / MBF
Red Maple	46.9 MBF	\$ 128.00 / MBF
Sugar Maple	67.9 MBF	\$ 210.00 / MBF
White Pine	1.6 MBF	\$ 34.00 / MBF
Pulpwood		
Basswood	147 Cords	\$ 12.30 / Cord
Mixed Aspen	152 Cords	\$ 12.80 / Cord
Mixed Hardwood	496 Cords	\$ 13.30 / Cord
White Pine	1 Cords	\$ 14.25 / Cord

\* The total volume is statistically estimated within plus (+) or minus (-) 5.96 percent. There are an estimated 1,446 cords on this timber sale, plus or minus 86 cords at the 95% confidence level. The estimated units are final and not subject to adjustment. Prospective bidders are urged to examine this timber and to make their own estimates of quantity and quality.

### **BOND AND PAYMENT SCHEDULE:**

1. A bond in the amount of \$2,205.25 to insure faithful performance of the conditions of the contract will be deposited by the successful bidder within 21 days of the sale award.
2. Cutting in any sale or unit without the required advance payment would be considered a trespass.
3. Total payment must be paid in advance or according to the following schedule :
  - (a) Ten percent (10%) of the sale value must be paid within 21 days of the sale award.
  - (b) The 10% down payment will be credited towards the first unit cut.
  - (c) Payment for each of the following units must be made before cutting begins in that unit:

<u>PAYMENT UNIT NUMBER</u>	<u>PERCENT OF TOTAL SALE VALUE</u>
01	35.7%
02	14.2%
03	35.9%
04	14.2%

4. If no cutting takes place, the 10% down payment will not be refunded.
5. Operations on the contract issued will terminate on 12/31/2023.

### **SALE STATISTICS**

Volumes were calculated in cubic feet using the Michigan taper model. Cubic foot volume includes all wood inside bark for the product indicated. For display purposes, cubic feet were converted to cords and MBF using a simple conversion factor, e.g. 79 cubic feet per cord and 185 cubic feet per MBF. The cubic foot volumes are precise; the cords and MBF volumes are not. Cubic foot volume cannot be directly converted to cords or boards with precision.

### **SALE VOLUMES**

The total estimated sale volume may not equal the sum of the species/products due to the nature of statistical calculations associated with double sampling methodology.

<u>VOLUME</u>		<u>STATISTICAL RANGE IN CORDS</u>		
<u>TOTAL CUBIC FEET</u>	<u>TOTAL CORDS</u>	<u>PERCENT ERROR</u>	<u>MINIMUM</u>	<u>MAXIMUM</u>
114,230	1,446	5.96%	1,360	1,532

**VDU VOLUMES**

A VDU is a Volume Determination Unit. Volumes and their associated statistics are calculated at the VDU level and summarized to the sale level. There is often a one to one relationship between a VDU and a Payment Unit, but not always, depending on the cruise design. Refer to the VDU TO PAYMENT UNIT table.

	VOLUME			RANGE IN CORDS	
VDU	TOTAL CUBIC FEET	TOTAL CORDS	PERCENT ERROR	MINIMUM	MAXIMUM
138	32,798	415	10.20%	373	458
147	15,290	194	18.57%	158	230
161	21,344	270	15.23%	229	311
168	35,091	444	8.80%	405	483
TOTAL:	104,524	1,323		1,165	1,482

**VDU TO PAYMENT UNIT**

When a VDU is associated with more than one Payment Unit (PU), the VDU volumes are assigned to the PU based on acres of the VDU within the PU.

VDU	VDU ACRES	PU	PU ACRES
138	32.1	1	32.1
147	7.9	2	7.9
161	9.4	4	9.4
168	39.6	3	39.6
TOTAL:	89.0		89.0

**DESCRIPTION OF TIMBER BY PU (PU)**

PU	MARKET GROUP	PRODUCT	QUANTITY	UNIT	ACRES	ADVERTISE PRICE				
1	Basswood	Sawtimber	38.4	MBF	32.1	\$15,740.80				
	Beech		14.9	MBF						
	Red Maple		28.7	MBF						
	Sugar Maple	Pulpwood	22.9	MBF						
	Basswood		40	Cords						
	Mixed Aspen		13	Cords						
	B. T. Aspen		13	Cords						
	Mixed Hardwood		153	Cords						
	Beech		36	Cords						
	Ironwood		8	Cords						
	Red Maple		47	Cords						
	Sugar Maple		62	Cords						
2	Black Cherry	Sawtimber	0.8	MBF	7.9	\$6,284.35				
	Mixed Aspen		17.6	MBF						
	B. T. Aspen		15.3	MBF						
	Quaking Aspen	Pulpwood	2.3	MBF						
	Red Maple		18.2	MBF						
	Sugar Maple		3.5	MBF						
	White Pine		1.6	MBF						
	Mixed Aspen		27	Cords						
	B. T. Aspen		21	Cords						
	Quaking Aspen		6	Cords						
	Mixed Hardwood		83	Cords						
	Black Cherry		4	Cords						
	Paper Birch		7	Cords						
	Red Maple		61	Cords						
	Sugar Maple		11	Cords						
	White Pine		1	Cords						
	3		Basswood	Sawtimber			50.4	MBF	39.6	\$15,831.30
			Sugar Maple				37.5	MBF		
Basswood		Pulpwood	107	Cords						
Mixed Hardwood			162	Cords						
Ironwood			24	Cords						
Sugar Maple			138	Cords						
4	Black Cherry	Sawtimber	5.5	MBF	9.4	\$6,248.50				
	Mixed Aspen		20.7	MBF						
	B. T. Aspen		15.0	MBF						
	Quaking Aspen	Pulpwood	5.7	MBF						
	Sugar Maple		4.0	MBF						
	Mixed Aspen		112	Cords						
	B. T. Aspen		64	Cords						
	Quaking Aspen		48	Cords						
	Mixed Hardwood		98	Cords						
	Black Cherry		39	Cords						
	Sugar Maple		59	Cords						
	TOTAL:			264.7			MBF			
TOTAL:			796	Cords						

## **Sale Specific Conditions & Requirements**

**Sale Name: Niblick Hardwood**

**Sale Number: 61-031-21 Seq#: 1**

### **1 - Sale Area**

#### **1.2 - Boundaries**

##### **1.2.1 - Painted boundaries (9/19)**

The sale boundary and Payment Unit boundaries are marked and identified by blue, red, and yellow paint. Exterior sale boundary lines against private property are marked with blue paint. Exterior sale boundary lines against state land are marked with red paint. Interior Payment Unit boundaries are marked with yellow paint. Retention patches are marked with double red paint marks; no harvesting activities may occur within these areas. The painted boundary line trees are not Included Timber and are to be protected unless marked with orange paint.

### **2 - Timber Specifications**

#### **2.1 - Included Timber**

##### **2.1.1 - Clearcut unit(s) with unmerchantable trees (6/14)**

Within Payment Unit(s) 2 and 4, cut all trees that are three (3) inches or more at DBH, except for any oak, cedar, hemlock, yellow birch, elm, or trees marked with green paint.

##### **2.1.3 - Cut tree marked unit(s) (12/08)**

Within Payment Unit(s) 1 and 3, all trees are designated for cutting when marked with orange paint above and below stump height, regardless of merchantability. Beech and ironwood less than 5 inches at DBH may be cut as necessary to facilitate harvest of designated timber, but should not be left standing broken, bent, or damaged.

#### **2.2 - Utilization**

##### **2.2.4 - Skidding length (2/14)**

Skidding of unlimbed tops or lengths over 17 feet is not permissible within Payment Units 1 and 3 unless approved by the Unit Manager or his/her representative.

### **4 - Transportation**

#### **4.1 - Construction**

##### **4.1.3 - Slash and earthen piles (8/04)**

Piles or windrows of earth along roads and landings that have been widened or constructed shall be leveled. Slash from road maintenance or construction, including stumps, shall be dispersed throughout the sale.

##### **4.1.12 - No new roads (1/12)**

No new roads will be permitted in any Payment Unit. All operations are limited to existing roads. Skid trails only will be allowed.

### **5 - Operations**

#### **5.2 - Conduct of Operations**

##### **5.2.1 - Slash**

###### **5.2.1.8 - Slash height (12/08)**

No slash or tree tops may exceed 24 inches in height.

##### **5.2.3 - Operating Restrictions**

###### **5.2.3.3 - Bark slippage restriction (3/09)**

Within Payment Unit(s) 1 and 3, cutting and skidding are not permitted during the period of April 15 to July 15. This restriction is because of bark slippage.

#### 5.2.4 - Dead and Down Creation

##### 5.2.4.1 - Dead and down creation, marked trees (10/13)

All trees marked with an orange "X" must be felled and left on site for wildlife.

#### 5.2.22 - Operating Caution

##### 5.2.22.1 - Operating caution (6/11)

It is recommended, but not required, that within Payment Unit(s) 4, cutting, skidding, and hauling occur during dry summer or frozen winter conditions. The reason for the recommendation is because of the potential for saturated soil and high rutting risk during wet periods.

##### 5.2.38 - No decking against live trees (2/04)

Cut products may not be decked against unmarked or designated leave trees.

#### 5.4 - Soil Protection

##### 5.4.3 - Erosion control (12/08)

Skid trails or haul roads may require erosion control structures or berms per direction of the Unit Manager or his/her representative.

##### 5.4.6 - Wet area protection (5/10)

No harvesting operations, including skidding and felling, are to take place within the "Q9" and "L" types adjacent to Payment Units 1 and 2. All equipment, trees and tops should be kept out of these areas. Care must be taken by the Purchaser to identify and avoid operating in these areas of the timber sale.

#### 5.8 - Protection of Endangered Species

##### 5.8.5 - Protection of raptor nests (3/13)

All trees with raptor nests will be protected if found during harvesting operations. Notification will be made to the Unit Manager or his/her representative who will notify the Wildlife Biologist so an on-site evaluation and recommendation can be made, if necessary.

### 6 - Safety and Fire Prevention

#### 6.2 - Signing

##### 6.2.1 - Road posting (10/20)

The Purchaser is responsible for posting and maintaining caution signs on Mayfield Trail prior to beginning operations. The road must be posted at appropriate distances from the Sale Area to warn of logging activity and truck traffic. Signs must be removed when harvest operations are suspended or completed. The Purchaser will provide these signs.

**TIMBER SALE MAP**

This information provided by authority of Part 525, 1994 PA 451 as amended.

Sale Number  
61-031Year  
21

Forest Management Unit Traverse City	County Grand Traverse	Mapped By Tim Webb	Date 4/15/2021	Page 1	of 1
Township 26N	Range 10W	Section(s) and Subdivision(s) Sec. 31: N1/2NW,SWNW,NWNE,N1/2SW,SESW	Scale 1:15,840		

**Cover Type**

A = Aspen	H = Hemlock	N = Marsh	U = Upland Brush
B = Paper Birch	J = Jack Pine	O = Oak	UM = Upland Mixed
C = Cedar	L = Lowland Brush	P = Lowland Poplar	V = Bog or Marsh
D = Treed Bog	LM = Lowland Mixed	Q = Mixed Swamp Conifer	W = White Pine
E = Swamp Hardwoods	M = Mpl. Ech. Birch	R = Red Pine	X = Non Stocked
F = Spruce Fir	MC = Mixed Conifer	S = Black Spruce	Z = Water
G = Cress	MD = Mixed Deciduous	T = Tamarack	

**Density**

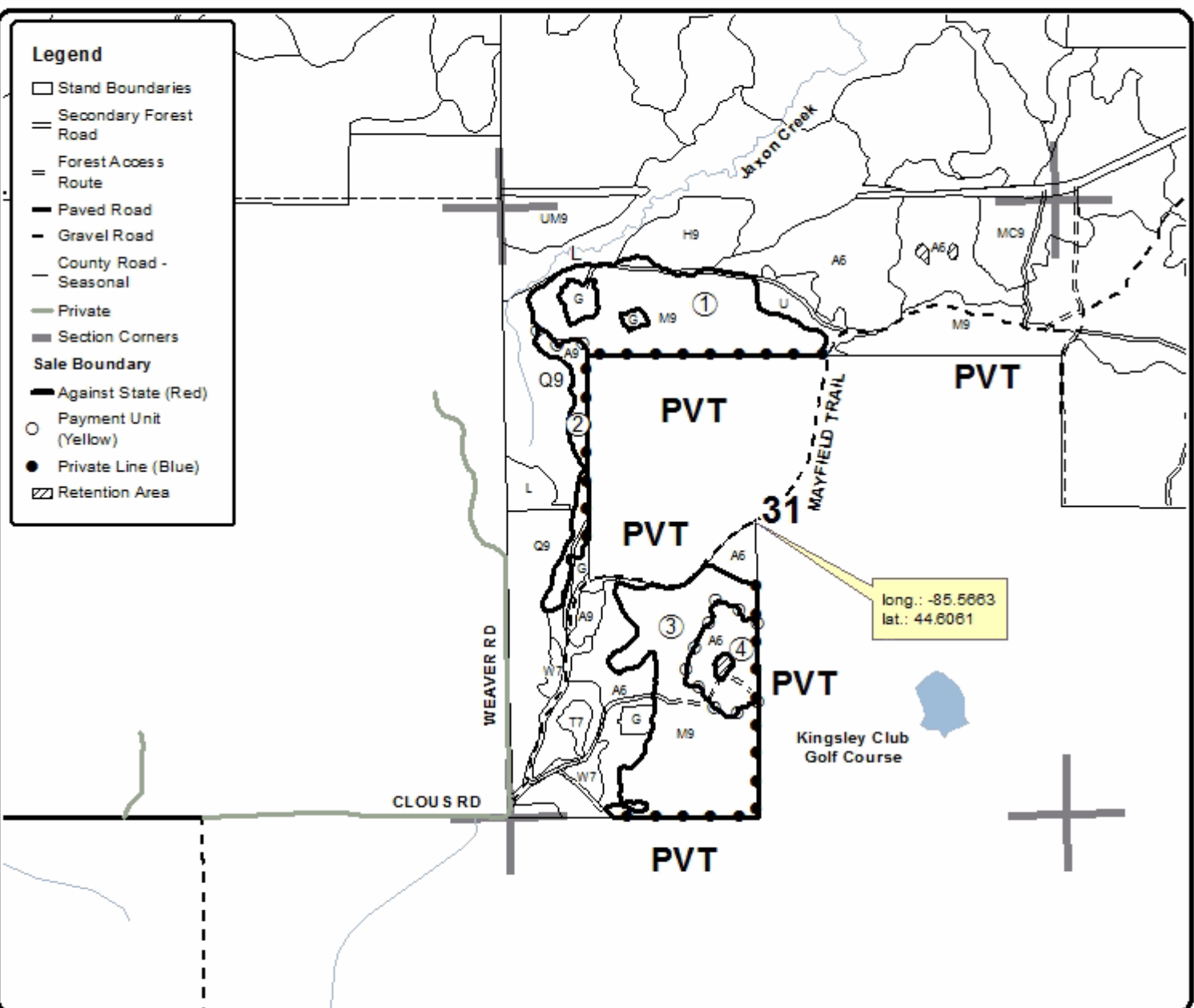
0 = Non Stocked	5 = Pole Timber Medium
1 = Seedling Sapling Poor	6 = Pole Timber Well
2 = Seedling Sapling Medium	7 = Saw Timber Poor
3 = Seedling Sapling Well	8 = Saw Timber Medium
4 = Pole Timber Poor	9 = Saw Timber Well

PU	Acres	PU	Acres
1	32.1	4	9.4
2	7.9		
3	39.6		

**Niblick Hardwood**

Compartment 61050

89.0 Acres



0 0.125 0.25 0.5 0.75 1 Miles