



**DEPARTMENT OF NATURAL RESOURCES  
STATE OF MICHIGAN**

**TIMBER SALE PROSPECTUS #6935**

SCHEDULED SALE DATE AND TIME: 8:30 a.m. (local time) on December 15, 2021.

LOCATION: CRYSTAL FALLS MGMT UNIT, 1420 US 2 WEST, CRYSTAL FALLS, MI 49920.

CONTACT NAME: Dan McNamee

PHONE NUMBER: (906) 875-6622

PROSPECTUS NOTE: The bidder is advised to inspect the sale area and review the location, estimated volumes, operating costs and contract terms of proposed sales. Please be aware that some landowners may request 60 days or more notice for access across their land.

Notice is hereby given that bids will be received by the Unit Manager, CRYSTAL FALLS MANAGEMENT UNIT, for certain timber on the following described lands:

Cable Lake Rd Mix (12-053-21) / T46N, R34W, SEC. 10, E1/2SW,S1/2SE.

T46N, R34W, SEC. 13, SESW.

T46N, R34W, SEC. 15, N1/2NW,N1/2NE.

T46N, R34W, SEC. 24, NENW,SWNW.

Iron County, Advertised Price \$6,414.35, 47.1 Acres, Hardwood, Spruce/Fir/Tamarack.

SALE NOTE: All units of volume listed for this sale were estimated using the Inventory Manager computer program and the new Michigan taper model.

See sale spec 4.4.1 for information on road work and culvert installation on private land access.

A recreation site such as a trail, pathway, or campground is within the sale area or the vicinity. Certain restrictions/specifications may be applicable including time restrictions. Access may be through private land.

## TIMBER SALE INFORMATION

### Cable Lake Rd Mix (12-053-21)

T46N, R34W, SEC. 10; T46N, R34W, SEC. 13; T46N, R34W, SEC. 15; T46N, R34W, SEC. 24.  
Iron County (Advertised Price \$6,414.35)

SALE NOTE: All units of volume listed for this sale were estimated using the Inventory Manager computer program and the new Michigan taper model.

See sale spec 4.4.1 for information on road work and culvert installation on private land access.

A recreation site such as a trail, pathway, or campground is within the sale area or the vicinity. Certain restrictions/specifications may be applicable including time restrictions. Access may be through private land.

A timber sale contract for this lump sum, sealed bid timber sale will be awarded to the responsible bidder offering the highest sealed bid price. All units of volume listed below were estimated using the Inventory Manager computer program and the new Michigan taper model. Bids must be at or above the following advertised price for each product and species:

<u>PRODUCTS &amp; SPECIES</u>	<u>ESTIMATED UNITS*</u>	<u>ADVERTISED PRICE</u>
Sawtimber		
Paper Birch	5.1 MBF	\$ 51.00 / MBF
Red Maple	17.5 MBF	\$ 57.00 / MBF
Sugar Maple	3.9 MBF	\$ 96.00 / MBF
Pulpwood		
Balsam Fir	95 Cords	\$ 4.10 / Cord
Mixed Hardwood	296 Cords	\$ 8.00 / Cord
Mixed Spruce	201 Cords	\$ 5.30 / Cord
Quaking Aspen	47 Cords	\$ 13.20 / Cord
Tamarack	119 Cords	\$ 2.85 / Cord

\* The total volume is statistically estimated within plus (+) or minus (-) 8.20 percent. There are an estimated 841 cords on this timber sale, plus or minus 69 cords at the 95% confidence level. The estimated units are final and not subject to adjustment. Prospective bidders are urged to examine this timber and to make their own estimates of quantity and quality.

### **BOND AND PAYMENT SCHEDULE:**

1. A bond in the amount of \$641.44 to insure faithful performance of the conditions of the contract will be deposited by the successful bidder within 21 days of the sale award.
2. Cutting in any sale or unit without the required advance payment would be considered a trespass.
3. Total payment must be paid in advance or according to the following schedule:
  - (a) Ten percent (10%) of the sale value must be paid within 21 days of the sale award.
  - (b) The 10% down payment will be credited towards the first unit cut.
  - (c) Payment for each of the following units must be made before cutting begins in that unit:

<u>PAYMENT UNIT NUMBER</u>	<u>PERCENT OF TOTAL SALE VALUE</u>
01	13.8%
02	21.3%
03	21.5%
04	14.1%
05	29.3%

4. If no cutting takes place, the 10% down payment will not be refunded.
5. Operations on the contract issued will terminate on 06/30/2024.

### **SALE STATISTICS**

Volumes were calculated in cubic feet using the Michigan taper model. Cubic foot volume includes all wood inside bark for the product indicated. For display purposes, cubic feet were converted to cords and MBF using a simple conversion factor, e.g. 79 cubic feet per cord and 185 cubic feet per MBF. The cubic foot volumes are precise; the cords and MBF volumes are not. Cubic foot volume cannot be directly converted to cords or boards with precision.

## SALE VOLUMES

The total estimated sale volume may not equal the sum of the species/products due to the nature of statistical calculations associated with double sampling methodology.

VOLUME			STATISTICAL RANGE IN CORDS	
TOTAL CUBIC FEET	TOTAL CORDS	PERCENT ERROR	MINIMUM	MAXIMUM
66,417	841	8.20%	772	910

## VDU VOLUMES

A VDU is a Volume Determination Unit. Volumes and their associated statistics are calculated at the VDU level and summarized to the sale level. There is often a one to one relationship between a VDU and a Payment Unit, but not always, depending on the cruise design. Refer to the VDU TO PAYMENT UNIT table.

	VOLUME			RANGE IN CORDS	
VDU	TOTAL CUBIC FEET	TOTAL CORDS	PERCENT ERROR	MINIMUM	MAXIMUM
7	4,111	52	20.00%	42	62
10	11,262	143	8.16%	131	154
25	17,457	221	18.18%	181	261
29	7,763	98	37.83%	61	135
38	14,980	190	15.40%	160	219
46	8,379	106	21.25%	84	129
<b>TOTAL:</b>	<b>63,952</b>	<b>810</b>		<b>658</b>	<b>961</b>

## VDU TO PAYMENT UNIT

When a VDU is associated with more than one Payment Unit (PU), the VDU volumes are assigned to the PU based on acres of the VDU within the PU.

VDU	VDU ACRES	PU	PU ACRES
7	6.1	1	6.1
10	5.4	2	5.4
25	13.6	3	13.6
29	3.2	4	3.2
38	10.6	5	10.6
46	8.2	4	8.2
<b>TOTAL:</b>	<b>47.1</b>		<b>47.1</b>

**DESCRIPTION OF TIMBER BY PU (PU)**

PU	MARKET GROUP	PRODUCT	QUANTITY	UNIT	ACRES	ADVERTISE PRICE
1	Red Maple	Sawtimber	3.8	MBF	6.1	\$887.00
	Sugar Maple		3.9	MBF		
	Mixed Hardwood	Pulpwood	37	Cords		
	Black Cherry		3	Cords		
	Red Maple		8	Cords		
	Sugar Maple		26	Cords		
2	Paper Birch	Sawtimber	5.1	MBF	5.4	\$1,367.30
	Red Maple		2.8	MBF		
	Balsam Fir	Pulpwood	12	Cords		
	Mixed Hardwood		107	Cords		
	Black Cherry		7	Cords		
	Paper Birch		4	Cords		
	Red Maple		96	Cords		
	Mixed Spruce		8	Cords		
	White Spruce		8	Cords		
3	Balsam Fir	Pulpwood	31	Cords	13.6	\$1,381.35
	Mixed Spruce		125	Cords		
	Black Spruce		55	Cords		
	White Spruce		70	Cords		
	Quaking Aspen		39	Cords		
	Tamarack		27	Cords		
4	Balsam Fir	Pulpwood	28	Cords	11.4	\$905.90
	Mixed Hardwood		31	Cords		
	Black Cherry		31	Cords		
	Mixed Spruce		53	Cords		
	Black Spruce		43	Cords		
	White Spruce		10	Cords		
Tamarack		92	Cords			
5	Red Maple	Sawtimber	10.9	MBF	10.6	\$1,872.80
	Balsam Fir	Pulpwood	24	Cords		
	Mixed Hardwood		121	Cords		
	Red Maple		100	Cords		
	Sugar Maple		21	Cords		
	Mixed Spruce		15	Cords		
	White Spruce		15	Cords		
	Quaking Aspen		8	Cords		
TOTAL:			26.5	MBF		
TOTAL:			758	Cords		

## **Sale Specific Conditions & Requirements**

**Sale Name: Cable Lake Rd Mix**

**Sale Number: 12-053-21 Seq#: 1**

### **1 - Sale Area**

#### **1.2 - Boundaries**

##### **1.2.1 - Painted boundaries (9/19)**

The sale boundary and Payment Unit boundaries are marked and identified by blue and red paint. The sale boundary lines against private property are marked with blue paint. Sale boundary lines against state land are marked with double red paint dots. The painted boundary line trees are not Included Timber and are to be protected.

### **2 - Timber Specifications**

#### **2.1 - Included Timber**

##### **2.1.2 - Clearcut unit(s) w/o unmerchantable trees (8/11)**

Within Payment Unit(s) 2, cut all aspen, maple, spruce, balsam fir, and white birch trees which meet minimum piece specifications in 2.2 Utilization (one 100" piece to a top diameter inside bark of 4 inches). Do not cut trees marked with green paint.

Within Payment Unit 3, cut all aspen, spruce, balsam fir, tamarack, and white birch trees which meet minimum piece specifications in 2.2 Utilization (one 100" piece to a top diameter inside bark of 4 inches). Approximately every 200 feet leave one 10 to 20 foot diameter patch of spruce.

Within Payment Unit 4, cut all aspen, red maple, cherry, spruce, balsam fir, and tamarack trees which meet minimum piece specifications in 2.2 Utilization (one 100" piece to a top diameter inside bark of 4 inches). Do not cut trees marked with green paint.

Within Payment Unit 5, cut all red maple, spruce, balsam fir, and white birch trees which meet minimum piece specifications in 2.2 Utilization (one 100" piece to a top diameter inside bark of 4 inches). There is a small acreage of marked hardwood within the Payment Unit 5. Within this marked area, cut only trees marked with orange paint above and below stump height.

##### **2.1.3 - Cut tree marked unit(s) (12/08)**

Within Payment Unit(s) 1, all trees are designated for cutting when marked with orange paint above and below stump height, regardless of merchantability.

#### **2.2 - Utilization**

##### **2.2.3 - Stump heights (4/07)**

Stump heights within the Sale Area shall not exceed 12 inches for trees greater than 10 inches at DBH and 4 inches for trees smaller than 10 inches at DBH.

##### **2.2.11 - Chipping restriction (9/14)**

If chipping occurs on this sale, then no woody debris present on the ground at the start of the sale may be chipped. Chip piles must be removed within 60 days of the sale expiration. In addition, after chip pile removal, residual chip depth at the landing may not exceed 4 inches.

### **3 - Payments**

#### **3.4 - Damaged Timber**

##### **3.4.1 - Damaged timber (7/16)**

General Condition and Requirement 3.4 Damaged Timber, defines liquidated damages for undesignated live merchantable trees which are cut or injured. Extreme care should be taken to avoid damage to tree seedlings and saplings.

No damage is acceptable to undesignated live merchantable trees. Within the Sale Area, if more than 20% of trees (> 4.5" DBH) within a specified area of the sale are damaged, liquidated damages will be assessed for all trees damaged. Rates will be in accordance with General Condition and Requirement 3.4 Damaged Timber.

### **4 - Transportation**

## 4.1 - Construction

### 4.1.3 - Slash and earthen piles (8/04)

Piles or windrows of earth along roads and landings that have been widened or constructed shall be leveled. Slash from road maintenance or construction, including stumps, shall be utilized or dispersed throughout the sale.

### 4.1.12 - No new roads (1/12)

No new roads will be permitted. A skid trail may be constructed from Payment Unit 4 to the main road. See the Timber Sale Map. Placement and approval must be made from the sale administrator.

## 4.2 - Maintenance

### 4.2.5 - Two wheel drive condition (2/04)

All existing trail roads on and adjacent to the sale area must be passable by two-wheel drive traffic for the duration of the sale.

## 4.4 - Access

### 4.4.1 - Private property access (3/11)

Permission for access across private land has been verbally obtained by the DNR. Final permission into Payment Units 4 and 5 is the responsibility of the Purchaser. Be aware, there may be road improvements and two culvert installations required by the private landowner. It is strongly encouraged to contact the DNR prior to bidding for details and landowner contact information.

## 5 - Operations

## 5.2 - Conduct of Operations

### 5.2.1 - Slash

#### 5.2.1.8 - Slash height (12/08)

No slash or tree tops may exceed 24 inches in height.

#### 5.2.1.11 - Slash for reforestation (3/21)

To facilitate reforestation, the Sale Area shall be left with slash evenly distributed. Bunched tops within the cutting area shall be broken up and scattered. Stumps shall be cut low to the ground. Processing sites shall not be left with a compacted layer of slash; tops from these sites shall be hauled back into the cut area and scattered.

### 5.2.2 - Hazard Trees/Snags

#### 5.2.2.1 - Den trees (10/16)

Obvious hollow and/or den trees shall be protected and left standing unless they are a safety hazard.

### 5.2.3 - Operating Restrictions

#### 5.2.3.1 - Operating restrictions (9/11)

Within Payment Unit(s) 1, cutting, skidding, and hauling are not permitted from March 1 to July 15.

Within Payment Unit 2, cutting, skidding, and hauling are not permitted from March 1 to May 15.

Within Payment Units 3-5, cutting, skidding, and hauling are not permitted from March 1 to December 15. If frozen conditions are not present by December 15, operations may not begin until these conditions occur.

This restriction is to avoid resource damage during spring break up and bark slip season in Payment Unit 1. In Payment Units 3-5, these restrictions are to avoid resource damage to low ground and the private landowner's road system. If prolonged wet weather conditions occur throughout the operating season, the sale administrator may suspend operations until favorable weather and ground conditions are present.

#### 5.2.38 - No decking against live trees (2/04)

Cut products may not be decked against unmarked or designated leave trees.

## 5.4 - Soil Protection

### 5.4.1 - Rutting restriction, general (7/16)

Operations are to cease immediately if equipment and weather conditions result in rutting of roads and/or skid trails which is

12 inches or greater in depth and 50 feet in length. The Unit Manager or his/her representative may restrict hauling and/or skidding if ruts exceed the specified depth. With the Unit Manager or his/her representative's approval, the Purchaser may return to the area when the risk of rutting has decreased.

#### 5.8 - Protection of Endangered Species

##### 5.8.5 - Protection of raptor nests (3/13)

All trees with raptor nests will be protected if found during harvesting operations. Notification will be made to the Unit Manager or his/her representative who will notify the Wildlife Biologist so an on-site evaluation and recommendation can be made, if necessary.

**TIMBER SALE MAP**

This information provided by authority of Part 525, 1994 PA 451, as amended.

Sale Number

12 - 053

Year

2021

Forest Management Unit  
CRYSTAL FALLSCounty  
IRON

Mapped By Rice

Cruised By Sebero

Date  
05/05/2021

Page 1 of 2

Township  
46NRange  
34WSection(s) and Subdivision(s) sc 10 E1/2SW, S1/2SE  
sec 13 SESW sec 15 N1/2NE, N1/2NW sec 24 NENW, SWNWScale  
4 inches = 1 mile**Cover Type**

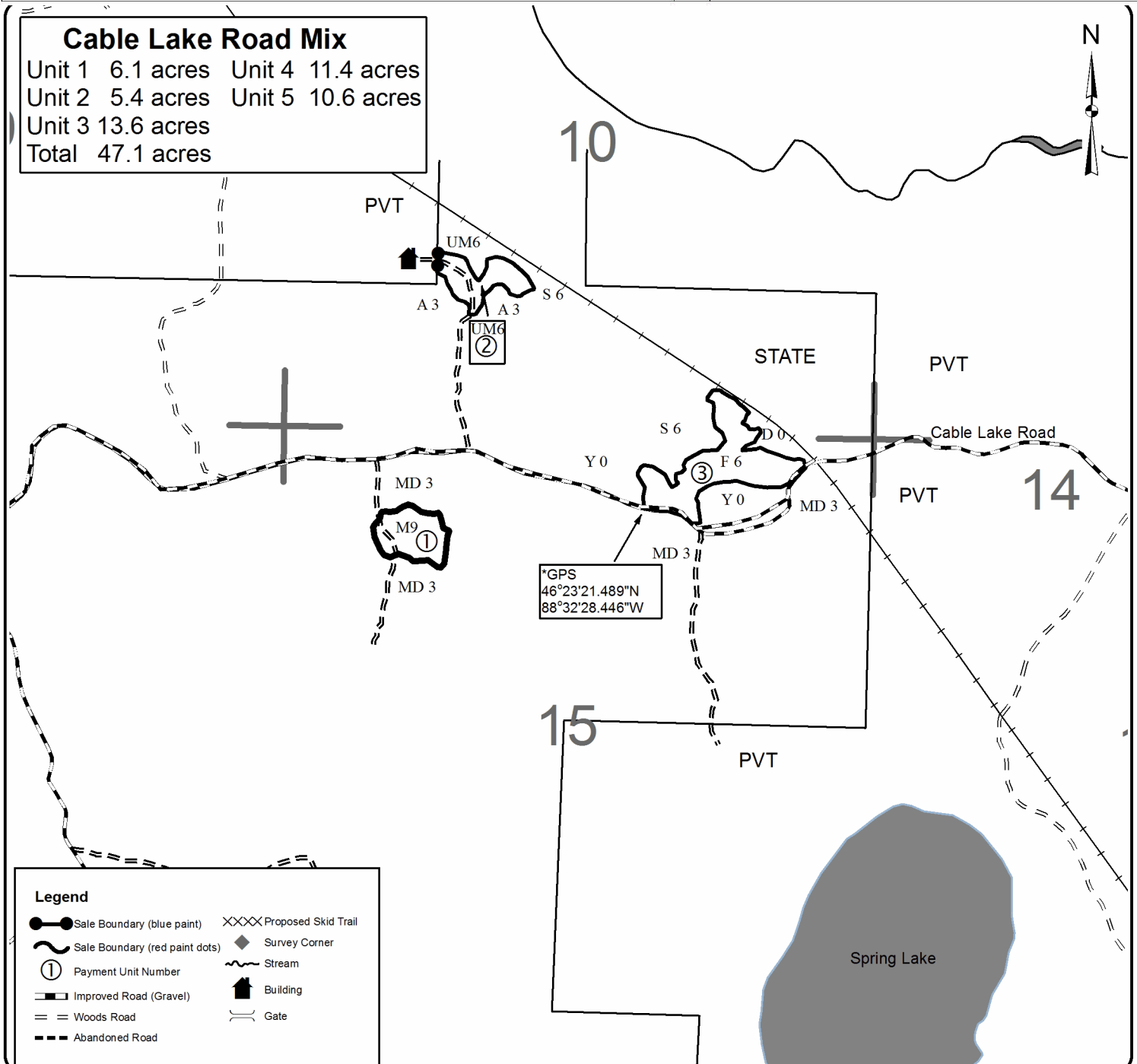
A = Aspen	H = Hemlock	N = Marsh	U = Upland Brush
B = Paper Birch	J = Jack Pine	O = Oak	UM = Upland Mixed
C = Cedar	L = Lowland Brush	P = Lowland Poplar	V = Bog or Marsh
D = Treed Bog	LM = Lowland Mixed	Q = Mixed Swamp Conifer	W = White Pine
E = Swamp Hdwoods	M = Mpl, Bch, Brch	R = Red Pine	X = Non Stocked
F = Spruce Fir	MC = Mixed Conifer	S = Black Spruce	Z = Water
G = Grass	MD = Mixed Deciduous	T = Tamarack	

**Density**

0 = Non Stocked	5 = Pole Timber Medium
1 = Seedling Sapling Poor	6 = Pole Timber Well
2 = Seedling Sapling Medium	7 = Saw Timber Poor
3 = Seedling Sapling Well	8 = Saw Timber Medium
4 = Pole Timber Poor	9 = Saw Timber Well

**Cable Lake Road Mix**

Unit 1 6.1 acres	Unit 4 11.4 acres
Unit 2 5.4 acres	Unit 5 10.6 acres
Unit 3 13.6 acres	
Total 47.1 acres	





**TIMBER SALE MAP***This information provided by authority of Part 525, 1994 PA 451, as amended.*Sale Number  
12 - 053Year  
2021Forest Management Unit  
CRYSTAL FALLSCounty  
IRONMapped By Rice  
Cruised By SeberoDate  
05/05/2021

Page 2 of 2

Township  
46NRange  
34WSection(s) and Subdivision(s) sc 10 E1/2SW, S1/2SE  
sec 13 SESW sec 15 N1/2NE, N1/2NW sec 24 NENW, SWNWScale  
4 inches = 1 mile**Cover Type**

A = Aspen	H = Hemlock	N = Marsh	U = Upland Brush
B = Paper Birch	J = Jack Pine	O = Oak	UM = Upland Mixed
C = Cedar	L = Lowland Brush	P = Lowland Poplar	V = Bog or Marsh
D = Treed Bog	LM = Lowland Mixed	Q = Mixed Swamp Conifer	W = White Pine
E = Swamp Hdwoods	M = Mpl, Bch, Brch	R = Red Pine	X = Non Stocked
F = Spruce Fir	MC = Mixed Conifer	S = Black Spruce	Z = Water
G = Grass	MD = Mixed Deciduous	T = Tamarack	

**Density**

0 = Non Stocked	5 = Pole Timber Medium
1 = Seedling Sapling Poor	6 = Pole Timber Well
2 = Seedling Sapling Medium	7 = Saw Timber Poor
3 = Seedling Sapling Well	8 = Saw Timber Medium
4 = Pole Timber Poor	9 = Saw Timber Well

**Cable Lake Road Mix**

Unit 1 6.1 acres	Unit 4 11.4 acres
Unit 2 5.4 acres	Unit 5 10.6 acres
Unit 3 13.6 acres	
Total 47.1 acres	

