



**DEPARTMENT OF NATURAL RESOURCES
STATE OF MICHIGAN**

TIMBER SALE PROSPECTUS #6939

SCHEDULED SALE DATE AND TIME: **10:00 a.m. (local time) on November 9, 2021.**

LOCATION: **SE REGION-WILD, 3580 STATE PARK DRIVE, BAY CITY, MI 48706.**

CONTACT NAME: Jesse Bramer

PHONE NUMBER: (231) 670-4586

PROSPECTUS NOTE: The bidder is advised to inspect the sale area and review the location, estimated volumes, operating costs and contract terms of proposed sales. Please be aware that some landowners may request 60 days or more notice for access across their land.

Notice is hereby given that bids will be received by the Game Area Manager, ALLEGAN SGA, for certain timber on the following described lands:

118th Sale (19-004-21) / T02N, R14W, SEC. 16, SWSW,E1/2SE.

T02N, R14W, SEC. 17, SESE.

T02N, R14W, SEC. 20, NENE.

Allegan County, Advertised Price \$57,222.35, 40.6 Acres, Aspen, Red Pine.

SALE NOTE: All units of volume listed for this sale were estimated using the Inventory Manager computer program and the new Michigan taper model.

A recreation site such as a trail, pathway, or campground is within the sale area or the vicinity. Certain restrictions/specifications may be applicable including time restrictions. Access may be through other public land.

TIMBER SALE INFORMATION

118th Sale (19-004-21)

T02N, R14W, SEC. 16; T02N, R14W, SEC. 17; T02N, R14W, SEC. 20.
Allegan County (Advertised Price \$57,222.35)

SALE NOTE: All units of volume listed for this sale were estimated using the Inventory Manager computer program and the new Michigan taper model.

A recreation site such as a trail, pathway, or campground is within the sale area or the vicinity. Certain restrictions/specifications may be applicable including time restrictions. Access may be through other public land.

A timber sale contract for this lump sum, sealed bid timber sale will be awarded to the responsible bidder offering the highest sealed bid price. All units of volume listed below were estimated using the Inventory Manager computer program and the new Michigan taper model. Bids must be at or above the following advertised price for each product and species:

<u>PRODUCTS & SPECIES</u>	<u>ESTIMATED UNITS*</u>	<u>ADVERTISED PRICE</u>
Sawtimber		
B. T. Aspen	78.7 MBF	\$ 83.00 / MBF
Black Cherry	6.2 MBF	\$ 148.00 / MBF
Jack Pine	12.0 MBF	\$ 17.00 / MBF
Red Oak	4.7 MBF	\$ 135.00 / MBF
Red Pine	394.3 MBF	\$ 83.00 / MBF
Pulpwood		
B. T. Aspen	188 Cords	\$ 13.35 / Cord
Jack Pine	44 Cords	\$ 8.60 / Cord
Mixed Hardwood	125 Cords	\$ 11.75 / Cord
Red Pine	378 Cords	\$ 31.35 / Cord

* The total volume is statistically estimated within plus (+) or minus (-) 9.98 percent. There are an estimated 1,897 cords on this timber sale, plus or minus 189 cords at the 95% confidence level. The estimated units are final and not subject to adjustment. Prospective bidders are urged to examine this timber and to make their own estimates of quantity and quality.

BOND AND PAYMENT SCHEDULE:

1. A bond in the amount of \$2,861.12 to insure faithful performance of the conditions of the contract will be deposited by the successful bidder within 21 days of the sale award.
2. Cutting in any sale or unit without the required advance payment would be considered a trespass.
3. Total payment must be paid in advance or according to the following schedule:
 - (a) Ten percent (10%) of the sale value must be paid within 21 days of the sale award.
 - (b) The 10% down payment will be credited towards the first unit cut.
 - (c) Payment for each of the following units must be made before cutting begins in that unit:

PAYMENT UNIT NUMBER	PERCENT OF TOTAL SALE VALUE
01	16.0%
02	84.0%
4. If no cutting takes place, the 10% down payment will not be refunded.
5. Operations on the contract issued will terminate on 03/01/2023.

SALE STATISTICS

Volumes were calculated in cubic feet using the Michigan taper model. Cubic foot volume includes all wood inside bark for the product indicated. For display purposes, cubic feet were converted to cords and MBF using a simple conversion factor, e.g. 79 cubic feet per cord and 185 cubic feet per MBF. The cubic foot volumes are precise; the cords and MBF volumes are not. Cubic foot volume cannot be directly converted to cords or boards with precision.

SALE VOLUMES

The total estimated sale volume may not equal the sum of the species/products due to the nature of statistical calculations associated with double sampling methodology.

VOLUME		PERCENT ERROR	STATISTICAL RANGE IN CORDS	
TOTAL CUBIC FEET	TOTAL CORDS		MINIMUM	MAXIMUM
149,829	1,897	9.98%	1,707	2,086

VDU VOLUMES

A VDU is a Volume Determination Unit. Volumes and their associated statistics are calculated at the VDU level and summarized to the sale level. There is often a one to one relationship between a VDU and a Payment Unit, but not always, depending on the cruise design. Refer to the VDU TO PAYMENT UNIT table.

VDU	VOLUME		PERCENT ERROR	RANGE IN CORDS	
	TOTAL CUBIC FEET	TOTAL CORDS		MINIMUM	MAXIMUM
1	29,774	377	0.00%	377	377
2	70,699	895	13.29%	776	1,014
3	18,030	228	25.00%	171	285
4	17,976	228	52.62%	108	347
TOTAL:	136,480	1,728		1,432	2,023

VDU TO PAYMENT UNIT

When a VDU is associated with more than one Payment Unit (PU), the VDU volumes are assigned to the PU based on acres of the VDU within the PU.

VDU	VDU ACRES	PU	PU ACRES
1	2.8	2	2.8
2	18.3	2	18.3
3	11.3	1	11.3
4	8.2	1	8.2
TOTAL:	40.6		40.6

DESCRIPTION OF TIMBER BY PU (PU)

PU	MARKET GROUP	PRODUCT	QUANTITY	UNIT	ACRES	ADVERTISE PRICE
1	B. T. Aspen	Sawtimber	41.7	MBF	19.5	\$9,160.30
	Black Cherry		6.2	MBF		
	Jack Pine		12.0	MBF		
	Red Oak		4.7	MBF		
	B. T. Aspen	Pulpwood	157	Cords		
	Jack Pine		44	Cords		
	Mixed Hardwood		125	Cords		
	Black Cherry		6	Cords		
	Red Maple		50	Cords		
	Red Oak		33	Cords		
	Sassafras		36	Cords		
2	B. T. Aspen	Sawtimber	37.0	MBF	21.1	\$48,062.05
	Red Pine		394.3	MBF		
	B. T. Aspen	Pulpwood	31	Cords		
	Red Pine		378	Cords		
TOTAL:			495.9	MBF		
TOTAL:			735	Cords		

Sale Specific Conditions & Requirements

Sale Name: 118th Sale

Sale Number: 19-004-21 Seq#: 1

1 - Sale Area

1.2 - Boundaries

1.2.1 - Painted boundaries (9/19)

The sale boundaries are marked and identified by blue and red paint. Exterior sale boundary lines against private property are marked with blue paint. Exterior sale boundary lines against state are marked with red paint.

2 - Timber Specifications

2.1 - Included Timber

2.1.1 - Clearcut unit(s) with unmerchantable trees (6/14)

Within Payment Unit(s) 1, cut all trees that are two (2) inches or more at DBH, except white pine, hemlock, beech, and oak trees over 20 inches at DBH.

2.1.5 - Overstory removal unit(s) (8/11)

Within Payment Unit(s) 2, all red pine, scotch pine, jack pine, and aspen which meet minimum piece specifications in 2.2 Utilization, are designated for cutting.

2.2 - Utilization

2.2.3 - Stump heights (4/07)

Stump heights within the Sale Area shall not exceed 12 inches for trees greater than 10 inches at DBH and 4 inches for trees smaller than 10 inches at DBH.

4 - Transportation

4.3 - Public Right-of-Way

4.3.2 - County R-O-W (12/06)

The county must be contacted prior to crossing or harvesting in the county road R-O-W.

5 - Operations

5.1 - Notification

5.1.6 - Utility R.O.W. (4/19)

It is the responsibility of the Purchaser to obtain permission from the utility company to utilize the power line R.O.W. for operations.

5.2 - Conduct of Operations

5.2.2 - Hazard Trees/Snags

5.2.2.1 - Den trees (10/16)

Obvious hollow and/or den trees shall be protected and left standing unless they are a safety hazard.

5.2.3 - Operating Restrictions

5.2.3.4 - Oak wilt restriction, no exceptions (1/18)

Within Payment Unit(s) 1-2, cutting, skidding, hauling within the sale and brushing of access roads to the sale are not permitted during the period of April 15 to July 15. No exceptions will be granted. This is necessary to reduce the spread of oak wilt.

5.2.32 - Decking/landing restoration (9/13)

All decking and landing areas must have the surface area restored to a condition equal to or better than before. This is to

ensure the proper regeneration of the stand. Wood debris, chips, and "cookies" from trimmings must be removed or scattered away from landing and loading areas and may not be windrowed on the edge.

5.2.38 - No decking against live trees (2/04)

Cut products may not be decked against unmarked or designated leave trees.

5.2.40 - Pathway protection (10/10)

Recreational hiking, biking, and equestrian trails exist in Payment Unit 2. Do not cut trees or damage posts that contain pathway markers. Maintain a 20-foot-wide slash, debris, and rut free zone daily, using the pathway as the centerline. Do not run equipment down the pathway. Cross pathway at right angles.

5.4 - Soil Protection

5.4.1 - Rutting restriction, general (7/16)

Operations are to cease immediately if equipment and weather conditions result in rutting of roads and/or skid trails which is 12 inches or greater in depth and 50 feet in length. The Unit Manager or his/her representative may restrict hauling and/or skidding if ruts exceed the specified depth. With the Unit Manager or his/her representative's approval, the Purchaser may return to the area when the risk of rutting has decreased.

5.8 - Protection of Endangered Species

5.8.5 - Protection of raptor nests (3/13)

All trees with raptor nests will be protected if found during harvesting operations. Notification will be made to the Unit Manager or his/her representative who will notify the Wildlife Biologist so an on-site evaluation and recommendation can be made, if necessary.

6 - Safety and Fire Prevention

6.2 - Signing

6.2.1 - Road posting (10/20)

The Purchaser is responsible for posting and maintaining caution signs on adjacent roads prior to beginning operations. The road must be posted at appropriate distances from the Sale Area to warn of logging activity and truck traffic. Signs must be removed when harvest operations are suspended or completed. The Purchaser will provide these signs.

7 - Other Conditions

7.10 - Certified Timber

7.10.1 - Non-certified timber (2/16)

The area encompassed by this timber sale is not certified to the standards of the Forest Stewardship Council (FSC) or the Sustainable Forestry Initiative (SFI). Forest products from this sale may not be delivered to the mill as "FSC and / or SFI certified". The lands within this sale are managed as a State Game Area.

**TIMBER SALE MAP**

This information provided by authority of Part 525, 1994 PA 451, as amended.

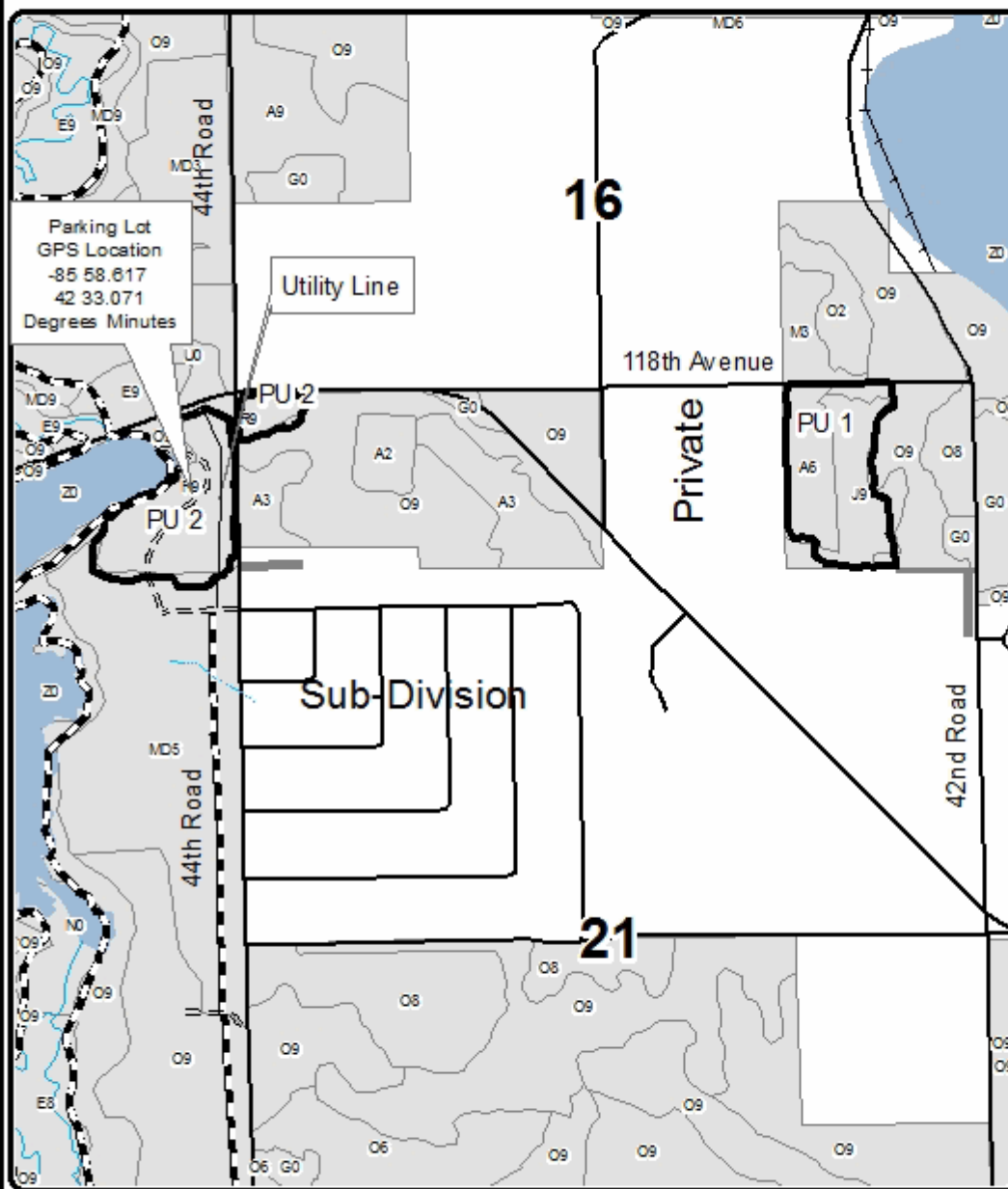
Sale Number	Year
19-004	21

Forest Management Unit 118th Sale	County Allegan	Mapped By J. Bramer	Date 07/29/2021	Page 1	of 1
Township 02N	Range 14W	Section(s) and Subdivision(s) Sections 16,17,20	Cruised By J. Bramer	Scale 1:15,840	

Cover Type				Density	
A = Aspen	H = Hemlock	N = Marsh	U = Upland Brush	0 = Non Stocked	5 = Pole Timber Medium
D = Paper Birch	J = Jack Pine	O = Oak	UM = Upland Mixed	1 = Seedling Sapling Poor	6 = Pole Timber Well
C = Cedar	L = Lowland Brush	P = Lowland Poplar	V = Bog or Marsh	2 = Seedling Sapling Medium	7 = Saw Timber Poor
D = Treed Bog	LM = Lowland Mixed	Q = Mixed Swamp Conifer	W = White Pine	3 = Seedling Sapling Well	8 = Saw Timber Medium
E = Swamp Hardwoods	M = Mpl. Dec. Dec.	R = Red Pine	X = Non Stocked	4 = Pole Timber Poor	9 = Saw Timber Well
F = Spruce Fir	MC = Mixed Conifer	S = Black Spruce	Z = Water		
G = Grass	MD = Mixed Deciduous	T = Tamarack			

PU Acres
1 19.5
2 21.1

118th Sale
40.6 Acres
Compartment 17

**Legend**

- Timber Sale Area (Red & Blue Paint)
- DNR - Forest Access Route
- Recreation Trail
- Road
- Stand Boundaries
- State Game Area
- Perennial River
- Lakes and Rivers Large
- Lakes and Rivers



QR code opens map
in Avenza App.

