



**DEPARTMENT OF NATURAL RESOURCES
STATE OF MICHIGAN**

TIMBER SALE PROSPECTUS #7038

SCHEDULED SALE DATE AND TIME: **1:00 p.m. (local time) on April 4, 2022.**

LOCATION: **GWINN MGMT UNIT, 410 WEST M 35, GWINN, MI 49841.**

CONTACT NAME: Kristen Matson

PHONE NUMBER: (906) 346-9201

PROSPECTUS NOTE: The bidder is advised to inspect the sale area and review the location, estimated volumes, operating costs and contract terms of proposed sales. Please be aware that some landowners may request 60 days or more notice for access across their land.

Notice is hereby given that bids will be received by the Unit Manager, GWINN MANAGEMENT UNIT, for certain timber on the following described lands:

Maple Grove Maple (32-013-21) / T44N, R23W, SEC. 2 , NWNW.

T44N, R23W, SEC. 3 , NWNE.

T45N, R23W, SEC. 34, N1/2NE,SENE,SESW,W1/2SE.

T45N, R23W, SEC. 35, SWSW.

Marquette County, Advertised Price \$56,648.80, 127.1 Acres, Hardwood, Sugar Maple.

SALE NOTE: All units of volume listed for this sale were estimated using the Inventory Manager computer program and the new Michigan taper model.

See sale spec 5.2.22.1 for information on operation cautions.

Access across private property is required to access Payment Units 5, 6, and 7.

Access may be through private land.

TIMBER SALE INFORMATION

Maple Grove Maple (32-013-21)

T44N, R23W, SEC. 2; T44N, R23W, SEC. 3; T45N, R23W, SEC. 34; T45N, R23W, SEC. 35.

Marquette County (Advertised Price \$56,648.80)

SALE NOTE: All units of volume listed for this sale were estimated using the Inventory Manager computer program and the new Michigan taper model.

See sale spec 5.2.22.1 for information on operation cautions.

Access across private property is required to access Payment Units 5, 6, and 7.

Access may be through private land.

A timber sale contract for this lump sum, sealed bid timber sale will be awarded to the responsible bidder offering the highest sealed bid price. All units of volume listed below were estimated using the Inventory Manager computer program and the new Michigan taper model. Bids must be at or above the following advertised price for each product and species:

<u>PRODUCTS & SPECIES</u>	<u>ESTIMATED UNITS*</u>	<u>ADVERTISED PRICE</u>
Sawtimber		
Red Maple	186.1 MBF	\$ 99.00 / MBF
Sugar Maple	145.7 MBF	\$ 187.00 / MBF
White Spruce	7.6 MBF	\$ 16.00 / MBF
Pulpwood		
B. T. Aspen	11 Cords	\$ 15.70 / Cord
Balsam Fir	17 Cords	\$ 10.80 / Cord
Mixed Hardwood	890 Cords	\$ 10.85 / Cord
Mixed Spruce	82 Cords	\$ 10.30 / Cord

* The total volume is statistically estimated within plus (+) or minus (-) 6.93 percent. There are an estimated 1,863 cords on this timber sale, plus or minus 129 cords at the 95% confidence level. The estimated units are final and not subject to adjustment. Prospective bidders are urged to examine this timber and to make their own estimates of quantity and quality.

BOND AND PAYMENT SCHEDULE:

1. A bond in the amount of \$2,832.44 to insure faithful performance of the conditions of the contract will be deposited by the successful bidder within 21 days of the sale award.
2. Cutting in any sale or unit without the required advance payment would be considered a trespass.
3. Total payment must be paid in advance or according to the following schedule:
 - (a) Ten percent (10%) of the sale value must be paid within 21 days of the sale award.
 - (b) The 10% down payment will be credited towards the first unit cut.
 - (c) Payment for each of the following units must be made before cutting begins in that unit:

<u>PAYMENT UNIT NUMBER</u>	<u>PERCENT OF TOTAL SALE VALUE</u>
01	30.6%
02	6.3%
03	1.6%
04	2.4%
05	3.6%
06	12.5%
07	9.5%
08	4.8%
09	28.7%

4. If no cutting takes place, the 10% down payment will not be refunded.
5. Operations on the contract issued will terminate on 08/31/2025.

SALE STATISTICS

Volumes were calculated in cubic feet using the Michigan taper model. Cubic foot volume includes all wood inside bark for the product indicated. For display purposes, cubic feet were converted to cords and MBF using a simple conversion factor, e.g. 79 cubic feet per cord and 185 cubic feet per MBF. The cubic foot volumes are precise; the cords and MBF volumes are not. Cubic foot volume cannot be directly converted to cords or boards with precision.

SALE VOLUMES

The total estimated sale volume may not equal the sum of the species/products due to the nature of statistical calculations associated with double sampling methodology.

VOLUME			STATISTICAL RANGE IN CORDS	
TOTAL CUBIC FEET	TOTAL CORDS	PERCENT ERROR	MINIMUM	MAXIMUM
147,204	1,863	6.93%	1,734	1,993

VDU VOLUMES

A VDU is a Volume Determination Unit. Volumes and their associated statistics are calculated at the VDU level and summarized to the sale level. There is often a one to one relationship between a VDU and a Payment Unit, but not always, depending on the cruise design. Refer to the VDU TO PAYMENT UNIT table.

	VOLUME			RANGE IN CORDS	
VDU	TOTAL CUBIC FEET	TOTAL CORDS	PERCENT ERROR	MINIMUM	MAXIMUM
1	30,624	388	16.04%	325	450
2	57,685	730	9.46%	661	799
3	12,927	164	20.82%	130	198
4	31,482	399	14.48%	341	456
TOTAL:	132,718	1,680		1,457	1,903

VDU TO PAYMENT UNIT

When a VDU is associated with more than one Payment Unit (PU), the VDU volumes are assigned to the PU based on acres of the VDU within the PU.

VDU	VDU ACRES	PU	PU ACRES
1	36.2	2	14.9
		3	3.9
		4	5.9
		8	11.5
2	46.0	1	23.7
		9	22.3
3	6.4	5	6.4
4	38.5	6	21.9
		7	16.6
TOTAL:	127.1		127.1

DESCRIPTION OF TIMBER BY PU (PU)

PU	MARKET GROUP	PRODUCT	QUANTITY	UNIT	ACRES	ADVERTISE PRICE
1	Red Maple	Sawtimber	30.8	MBF	23.7	\$17,304.35
	Sugar Maple		65.5	MBF		
	Balsam Fir	Pulpwood	1	Cords		
	Mixed Hardwood		183	Cords		
	<i>Red Maple</i>		<i>61</i>	<i>Cords</i>		
	<i>Sugar Maple</i>		<i>122</i>	<i>Cords</i>		
	Mixed Spruce		1	Cords		
	<i>White Spruce</i>		<i>1</i>	<i>Cords</i>		
2	Red Maple	Sawtimber	21.8	MBF	14.9	\$3,555.20
	Sugar Maple		0.6	MBF		
	White Spruce		0.3	MBF		
	B. T. Aspen	Pulpwood	5	Cords		
	Balsam Fir		2	Cords		
	Mixed Hardwood		104	Cords		
	<i>Balsam Poplar</i>	<i>Sawtimber</i>	<i>0.4</i>	<i>MBF</i>		
	<i>Balsam Poplar</i>	<i>Pulpwood</i>	<i>2</i>	<i>Cords</i>		
	<i>Black Cherry</i>		<i>2</i>	<i>Cords</i>		
	<i>Red Maple</i>		<i>83</i>	<i>Cords</i>		
	<i>Sugar Maple</i>		<i>16</i>	<i>Cords</i>		
	Mixed Spruce		5	Cords		
	<i>White Spruce</i>		<i>5</i>	<i>Cords</i>		
3	Red Maple	Sawtimber	5.7	MBF	3.9	\$911.40
	Sugar Maple		0.2	MBF		
	White Spruce		0.1	MBF		
	B. T. Aspen	Pulpwood	1	Cords		
	Mixed Hardwood		26	Cords		
	<i>Balsam Poplar</i>	<i>Sawtimber</i>	<i>0.1</i>	<i>MBF</i>		
	<i>Red Maple</i>	<i>Pulpwood</i>	<i>22</i>	<i>Cords</i>		
	<i>Sugar Maple</i>		<i>4</i>	<i>Cords</i>		
	Mixed Spruce		1	Cords		
	<i>White Spruce</i>		<i>1</i>	<i>Cords</i>		
4	Red Maple	Sawtimber	8.6	MBF	5.9	\$1,387.20
	Sugar Maple		0.2	MBF		
	White Spruce		0.1	MBF		
	B. T. Aspen	Pulpwood	2	Cords		
	Balsam Fir		1	Cords		
	Mixed Hardwood		40	Cords		
	<i>Balsam Poplar</i>	<i>Sawtimber</i>	<i>0.1</i>	<i>MBF</i>		
	<i>Balsam Poplar</i>	<i>Pulpwood</i>	<i>1</i>	<i>Cords</i>		
	<i>Red Maple</i>		<i>33</i>	<i>Cords</i>		
	<i>Sugar Maple</i>		<i>6</i>	<i>Cords</i>		
	Mixed Spruce		2	Cords		
	<i>White Spruce</i>		<i>2</i>	<i>Cords</i>		
5	Red Maple	Sawtimber	3.9	MBF	6.4	\$2,031.60
	Balsam Fir	Pulpwood	10	Cords		
	Mixed Hardwood		80	Cords		
	<i>Red Maple</i>		<i>80</i>	<i>Cords</i>		
	Mixed Spruce		65	Cords		
	<i>Black Spruce</i>		<i>64</i>	<i>Cords</i>		
	<i>White Spruce</i>		<i>1</i>	<i>Cords</i>		
6	Red Maple	Sawtimber	39.6	MBF	21.9	\$7,108.40
	Sugar Maple		9.7	MBF		
	White Spruce		3.9	MBF		
	Balsam Fir	Pulpwood	1	Cords		
	Mixed Hardwood		118	Cords		

DESCRIPTION OF TIMBER BY PU (PU), CON'T

PU	MARKET GROUP	PRODUCT	QUANTITY	UNIT	ACRES	ADVERTISE PRICE
6 con't	<i>Red Maple</i> <i>Sugar Maple</i> Mixed Spruce <i>White Spruce</i>	<i>Pulpwood</i>	47 71 2 2	<i>Cords</i> <i>Cords</i> Cords <i>Cords</i>		
7	Red Maple Sugar Maple White Spruce Mixed Hardwood <i>Red Maple</i> <i>Sugar Maple</i> Mixed Spruce <i>White Spruce</i>	Sawtimber Pulpwood 	29.9 7.3 2.9 89 35 54 2 2	MBF MBF MBF Cords <i>Cords</i> <i>Cords</i> Cords <i>Cords</i>	16.6	\$5,357.85
8	Red Maple Sugar Maple White Spruce B. T. Aspen Balsam Fir Mixed Hardwood <i>Balsam Poplar</i> <i>Balsam Poplar</i> <i>Black Cherry</i> <i>Red Maple</i> <i>Sugar Maple</i> Mixed Spruce <i>White Spruce</i>	Sawtimber Pulpwood <i>Sawtimber</i> <i>Pulpwood</i> 	16.8 0.5 0.3 3 1 79 0.3 1 1 64 12 4 4	MBF MBF MBF Cords Cords Cords <i>MBF</i> <i>Cords</i> <i>Cords</i> <i>Cords</i> <i>Cords</i> Cords <i>Cords</i>	11.5	\$2,717.75
9	Red Maple Sugar Maple Balsam Fir Mixed Hardwood <i>Red Maple</i> <i>Sugar Maple</i>	Sawtimber Pulpwood 	29.0 61.7 1 171 58 113	MBF MBF Cords Cords <i>Cords</i> <i>Cords</i>	22.3	\$16,275.05
TOTAL:			339.4	MBF		
TOTAL:			1,000	Cords		

Sale Specific Conditions & Requirements

Sale Name: Maple Grove Maple

Sale Number: 32-013-21 Seq#: 1

1 - Sale Area

1.2 - Boundaries

1.2.1 - Painted boundaries (9/19)

The sale boundary and Payment Unit boundaries are marked and identified by blue, red, and yellow paint. Exterior sale boundary lines against private property are marked with blue paint. Exterior sale boundary lines against state are marked with red paint. Interior Payment Unit boundaries are marked with yellow paint. The painted boundary line trees are not Included Timber and are to be protected unless marked with orange paint. Yellow painted trees designating an interior Payment Unit boundary are only to be cut when all surrounding Payment Units have been paid.

2 - Timber Specifications

2.1 - Included Timber

2.1.1 - Clearcut unit(s) with unmerchantable trees (6/14)

Within Payment Unit(s) 5, cut all trees that are two (2) inches or more at DBH, except cedar, hemlock, white pine, black cherry, and yellow birch.

2.1.3 - Cut tree marked unit(s) (12/08)

Within Payment Unit(s) 1-4 and 6-9, all trees are designated for cutting when marked with orange paint above and below stump height, regardless of merchantability.

2.2 - Utilization

2.2.6 - Roundwood operation required (3/21)

The skidding of whole trees or tree segments with limbs attached is prohibited within Payment Unit(s) 1-4 and 6-9. All products must be produced as roundwood and forwarded to existing roads or landing areas in final product length.

3 - Payments

3.4 - Damaged Timber

3.4.1 - Damaged timber (7/16)

General Condition and Requirement 3.4 Damaged Timber, defines liquidated damages for undesignated live merchantable trees which are cut or injured.

No damage is acceptable to undesignated live merchantable trees. Within the Sale Area, if more than 5% of trees (> 4.5" DBH) within a specified area of the sale are damaged, liquidated damages will be assessed for all trees damaged. Rates will be in accordance with General Condition and Requirement 3.4 Damaged Timber.

4 - Transportation

4.1 - Construction

4.1.3 - Slash and earthen piles (8/04)

Piles or windrows of earth along roads and landings that have been widened or constructed shall be leveled. Slash from road maintenance or construction, including stumps, shall be dispersed throughout the sale.

4.1.4 - Timber removed for construction (12/09)

Trees cut or damaged in the process of pre-approved road, landing or skid trail construction will be decked in an area separate from other Designated Timber and not removed until measured by the sale administrator. Payment will be made at the specified Purchase Unit Price.

4.1.6 - Road construction (1/09)

Construction of new roads or improvements of existing roads shall be done in such a way as to minimize the environmental and visual impacts. Merchantable trees shall be cut and utilized unless otherwise directed. Non-merchantable trees shall be

severed and laid flat on the ground. Slash shall be scattered, and not left in windrows and kept a minimum of 10 feet back from the road edge. Stumps shall be set upright, not left on edge, and be moved at least 10 feet away from the road edge. Disturbed soil shall be feathered into the woods and not left in berms or windrows.

4.1.7 - Road closure (10/11)

All new roads built into the sale must be blocked to vehicle traffic upon completion of the sale. Overgrown roads that are reopened shall be considered new roads. In general, this will require constructing a four (4') foot high berm of stumps and logs covered with earth. These roads must be rendered impassable to cars and trucks. Contact the sale administrator for specific details of design and placement.

4.2 - Maintenance

4.2.4 - Grading (10/16)

For completion of the sale, state forest roads must be graded. In general, this will require a road grader or bulldozer to shape up the roads after forest products have been hauled off site. This includes cleaning of drainage areas, grading, crowning, and filling with gravel, if necessary. The grading equipment to be used must be approved by the Unit Manager or his/her representative.

4.3 - Public Right-of-Way

4.3.2 - County R-O-W (12/06)

The county must be contacted prior to crossing or harvesting in the county road R-O-W. This applies to Payment Units 1, 3, and 8 and County Road 533 (Maple Grove Road).

4.4 - Access

4.4.1 - Private property access (3/11)

Permission for access across private land is the responsibility of the Purchaser.

5 - Operations

5.1 - Notification

5.1.1 - Pre-sale conference (10/16)

A pre-sale conference on site between the Purchaser and sale administrator is required prior to beginning any operations. The Unit Manager or his/her representative must be contacted at least 3 days in advance to schedule the conference.

5.2 - Conduct of Operations

5.2.2 - Hazard Trees/Snags

5.2.2.1 - Den trees (10/16)

Obvious hollow and/or den trees shall be protected and left standing unless they are a safety hazard.

5.2.3 - Operating Restrictions

5.2.3.3 - Bark slippage restriction (3/09)

Within Payment Unit(s) 1-4 and 6-9, unless changed by written agreement, cutting and skidding are not permitted during the period of April 15 to July 15. This restriction is because of bark slippage.

5.2.22 - Operating Caution

5.2.22.1 - Operating caution (6/11)

It is recommended, but not required, that within Payment Unit(s) 5-7, cutting, skidding, and hauling occur during dry summer or frozen winter conditions. The reason for the recommendation is because of areas of soft ground within the Payment Unit.

5.2.32 - Decking/landing restoration (9/13)

All decking and landing areas must have the surface area restored to a condition equal to or better than before. This is to ensure the proper regeneration of the stand. Wood debris, chips, and "cookies" from trimmings must be removed or scattered away from landing and loading areas and may not be windrowed on the edge.

5.2.37 - No decking areas (12/08)

No decking is allowed within 50 feet of County Road 533 (Maple Grove Road) without permission from the County.

5.2.38 - No decking against live trees (2/04)

Cut products may not be decked against unmarked or designated leave trees.

5.4 - Soil Protection

5.4.1 - Rutting restriction, general (7/16)

Operations are to cease immediately if equipment and weather conditions result in rutting of roads and/or skid trails which is 12 inches or greater in depth and 50 feet in length. The Unit Manager or his/her representative may restrict hauling and/or skidding if ruts exceed the specified depth. With the Unit Manager or his/her representative's approval, the Purchaser may return to the area when the risk of rutting has decreased.

5.4.2 - Skid trails (2/04)

Skid trails up and down slopes should be avoided. If however this is unavoidable, these trails will be left in a non-erodible condition using water bars, logs, and slash. Placing of slash on these skid trails while logging is ongoing may alleviate need for any further action. At the direction of the sale administrator, seed, fertilizer, and mulch may also be required.

5.8 - Protection of Endangered Species

5.8.5 - Protection of raptor nests (3/13)

All trees with raptor nests will be protected if found during harvesting operations. Notification will be made to the Unit Manager or his/her representative who will notify the Wildlife Biologist so an on-site evaluation and recommendation can be made, if necessary.

6 - Safety and Fire Prevention

6.2 - Signing

6.2.1 - Road posting (10/20)

The Purchaser is responsible for posting and maintaining caution signs on County Road 533 (Maple Grove Road) prior to beginning operations. The road must be posted at appropriate distances from the Sale Area to warn of logging activity and truck traffic. Signs must be removed when harvest operations are suspended or completed. The Purchaser will provide these signs.

**TIMBER SALE MAP***This information provided by authority of Part 525, 1994 PA 451, as amended.*

Sale Number	Year
32-013	21

Forest Management Unit Gwinn Management Unit	County Marquette	Mapped By Brolin	Date 08/30/2021	Page 1	of 1
Township 44, 45N	Range 23W	Section(s) and Subdivision(s) Sections 2, 3 (44N-23W) / Sections 34, 35, 36 (45N-23W)	Cruised By Contractor, EB	Scale 1:15,840	

Cover Type

A = Aspen	H = Hemlock	N = Marsh	U = Upland Brush
B = Paper Birch	J = Jack Pine	O = Oak	UM = Upland Mixed
C = Cedar	L = Lowland Brush	P = Lowland Poplar	V = Bog or Marsh
D = Treed Bog	LM = Lowland Mixed	Q = Mixed Swamp Conifer	W = White Pine
E = Swamp Hdwoods	M = Mpl, Bch, Brch	R = Red Pine	X = Non Stocked
F = Spruce Fir	MC = Mixed Conifer	S = Black Spruce	Z = Water
G = Grass	MD = Mixed Deciduous	T = Tamarack	

Density

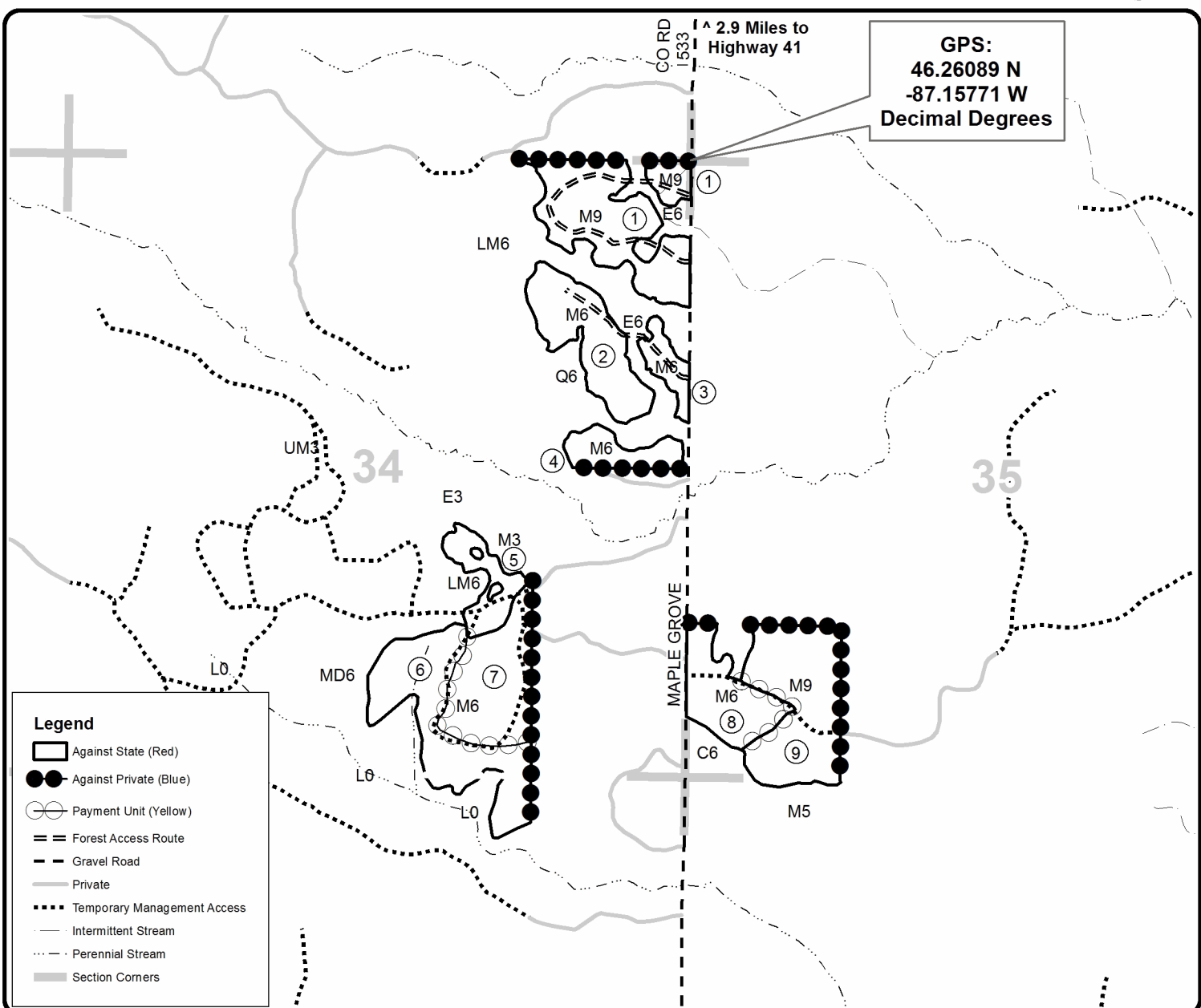
0 = Non Stocked	5 = Pole Timber Medium
1 = Seedling Sapling Poor	6 = Pole Timber Well
2 = Seedling Sapling Medium	7 = Saw Timber Poor
3 = Seedling Sapling Well	8 = Saw Timber Medium
4 = Pole Timber Poor	9 = Saw Timber Well

PU Acres	PU Acres
1 23.7	6 21.9
2 14.9	7 16.6
3 3.9	8 11.5
4 5.9	9 22.3
5 6.4	

Maple Grove Maple

Compartment 1

127.1 Acres

QR code for
PDF Maps app

0 0.125 0.25 0.5 0.75 1 Miles