



**DEPARTMENT OF NATURAL RESOURCES
STATE OF MICHIGAN
TIMBER SALE PROSPECTUS #7060**

SCHEDULED SALE DATE AND TIME: 10:00 a.m. (local time) on June 7, 2022.

LOCATION: ATLANTA MGMT UNIT, 13501 M 33, ATLANTA, MI 49709.

CONTACT NAME: Cody Stevens

PHONE NUMBER: (989) 785-4251

PROSPECTUS NOTE: The bidder is advised to inspect the sale area and review the location, estimated volumes, operating costs and contract terms of proposed sales. Please be aware that some landowners may request 60 days or more notice for access across their land.

Notice is hereby given that bids will be received by the Unit Manager, ATLANTA MANAGEMENT UNIT, for certain timber on the following described lands:

Hunt Creek and Blue Lake Aspen (54-004-21) / T29N, R03E, SEC. 20,
NENW,S1/2NW,NWNE,N1/2SW,S1/2SE.

T29N, R03E, SEC. 29, NENW,NE.

T29N, R03E, SEC. 30, NWSW,S1/2SW.

T29N, R03E, SEC. 31, NENW.

Montmorency County, Advertised Price \$191,584.15, 167.0 Acres, Aspen, Hardwood.

SALE NOTE: All units of volume listed for this sale were estimated using the Inventory Manager computer program and the new Michigan taper model.

A recreation site such as a trail, pathway, or campground is within the sale area or the vicinity.
Certain restrictions/specifications may be applicable including time restrictions.

TIMBER SALE INFORMATION

Hunt Creek and Blue Lake Aspen (54-004-21)

T29N, R03E, SEC. 20; T29N, R03E, SEC. 29; T29N, R03E, SEC. 30; T29N, R03E, SEC. 31.

Montmorency County (Advertised Price \$191,584.15)

SALE NOTE: All units of volume listed for this sale were estimated using the Inventory Manager computer program and the new Michigan taper model.

A recreation site such as a trail, pathway, or campground is within the sale area or the vicinity. Certain restrictions/specifications may be applicable including time restrictions.

A timber sale contract for this lump sum, sealed bid timber sale will be awarded to the responsible bidder offering the highest sealed bid price. All units of volume listed below were estimated using the Inventory Manager computer program and the new Michigan taper model. Bids must be at or above the following advertised price for each product and species:

<u>PRODUCTS & SPECIES</u>	<u>ESTIMATED UNITS*</u>	<u>ADVERTISED PRICE</u>
Sawtimber		
Basswood	10.3 MBF	\$ 52.00 / MBF
Beech	9.1 MBF	\$ 46.00 / MBF
Mixed Aspen	296.9 MBF	\$ 89.00 / MBF
Paper Birch	2.2 MBF	\$ 30.00 / MBF
Red Maple	19.6 MBF	\$ 48.00 / MBF
Red Oak	111.4 MBF	\$ 160.00 / MBF
Sugar Maple	39.9 MBF	\$ 258.00 / MBF
White Oak	2.4 MBF	\$ 89.00 / MBF
Pulpwood		
Balsam Fir	80 Cords	\$ 16.30 / Cord
Mixed Aspen	4,168 Cords	\$ 24.10 / Cord
Mixed Hardwood	1,203 Cords	\$ 18.90 / Cord
Mixed Oak	311 Cords	\$ 32.75 / Cord
N. White Cedar	14 Cords	\$ 13.75 / Cord

* The total volume is statistically estimated within plus (+) or minus (-) 4.07 percent. There are an estimated 6,766 cords on this timber sale, plus or minus 275 cords at the 95% confidence level. The estimated units are final and not subject to adjustment. Prospective bidders are urged to examine this timber and to make their own estimates of quantity and quality.

BOND AND PAYMENT SCHEDULE:

1. A bond in the amount of \$9,579.21 to insure faithful performance of the conditions of the contract will be deposited by the successful bidder within 21 days of the sale award.
2. Cutting in any sale or unit without the required advance payment would be considered a trespass.
3. Total payment must be paid in advance or according to the following schedule :
 - (a) Ten percent (10%) of the sale value must be paid within 21 days of the sale award.
 - (b) The 10% down payment will be credited towards the first unit cut.
 - (c) Payment for each of the following units must be made before cutting begins in that unit:

<u>PAYMENT UNIT NUMBER</u>	<u>PERCENT OF TOTAL SALE VALUE</u>
01	12.1%
02	17.0%
03	14.0%
04	9.9%
05	14.7%
06	15.9%
07	16.4%

4. If no cutting takes place, the 10% down payment will not be refunded.
5. Operations on the contract issued will terminate on 12/31/2024.

SALE STATISTICS

Volumes were calculated in cubic feet using the Michigan taper model. Cubic foot volume includes all wood inside bark for the product indicated. For display purposes, cubic feet were converted to cords and MBF using a simple conversion factor, e.g. 79 cubic feet per cord and 185 cubic feet per MBF. The cubic foot volumes are precise; the cords and MBF volumes are not. Cubic foot volume cannot be directly converted to cords or boards with precision.

SALE VOLUMES

The total estimated sale volume may not equal the sum of the species/products due to the nature of statistical calculations associated with double sampling methodology.

VOLUME			STATISTICAL RANGE IN CORDS	
TOTAL CUBIC FEET	TOTAL CORDS	PERCENT ERROR	MINIMUM	MAXIMUM
534,497	6,766	4.07%	6,490	7,041

VDU VOLUMES

A VDU is a Volume Determination Unit. Volumes and their associated statistics are calculated at the VDU level and summarized to the sale level. There is often a one to one relationship between a VDU and a Payment Unit, but not always, depending on the cruise design. Refer to the VDU TO PAYMENT UNIT table.

	VOLUME			RANGE IN CORDS	
VDU	TOTAL CUBIC FEET	TOTAL CORDS	PERCENT ERROR	MINIMUM	MAXIMUM
44	59,975	759	9.93%	684	835
61	247,412	3,132	6.49%	2,929	3,335
80	161,143	2,040	7.31%	1,891	2,189
81	65,967	835	9.80%	753	917
TOTAL:	534,497	6,766		6,256	7,275

VDU TO PAYMENT UNIT

When a VDU is associated with more than one Payment Unit (PU), the VDU volumes are assigned to the PU based on acres of the VDU within the PU.

VDU	VDU ACRES	PU	PU ACRES
44	19.2	4	19.2
61	77.2	5	24.2
		6	26.1
		7	26.9
		2	27.1
80	49.2	3	22.1
		1	21.4
81	21.4		
TOTAL:	167.0		167.0

DESCRIPTION OF TIMBER BY PU (PU)

PU	MARKET GROUP	PRODUCT	QUANTITY	UNIT	ACRES	ADVERTISE PRICE
1	Mixed Aspen	Sawtimber	42.2	MBF	21.4	\$23,104.65
	<i>B. T. Aspen</i>		17.0	<i>MBF</i>		
	<i>Quaking Aspen</i>		25.2	<i>MBF</i>		
	Red Maple	Pulpwood	14.9	MBF		
	Red Oak		22.2	MBF		
	Balsam Fir		44	Cords		
	Mixed Aspen		477	Cords		
	<i>B. T. Aspen</i>		199	<i>Cords</i>		
	<i>Balsam Poplar</i>		14	<i>Cords</i>		
	<i>Quaking Aspen</i>		264	<i>Cords</i>		
	Mixed Hardwood		105	Cords		
	<i>Red Maple</i>		93	<i>Cords</i>		
	<i>Sugar Maple</i>		12	<i>Cords</i>		
	Mixed Oak		27	Cords		
	<i>Red Oak</i>		27	<i>Cords</i>		
2	Mixed Aspen	Sawtimber	51.2	MBF	27.1	\$32,809.45
	<i>B. T. Aspen</i>		51.2	<i>MBF</i>		
	Red Maple		1.5	MBF		
	Red Oak	Pulpwood	25.5	MBF		
	White Oak		1.3	MBF		
	Mixed Aspen		851	Cords		
	<i>B. T. Aspen</i>		690	<i>Cords</i>		
	<i>Quaking Aspen</i>		161	<i>Cords</i>		
	Mixed Hardwood		99	Cords		
	<i>Paper Birch</i>		3	<i>Cords</i>		
	<i>Red Maple</i>		88	<i>Cords</i>		
	<i>Sugar Maple</i>		7	<i>Cords</i>		
	<i>White Ash</i>		1	<i>Cords</i>		
	Mixed Oak		49	Cords		
	<i>Red Oak</i>		47	<i>Cords</i>		
	<i>White Oak</i>		2	<i>Cords</i>		
3	Mixed Aspen	Sawtimber	41.7	MBF	22.1	\$26,750.30
	<i>B. T. Aspen</i>		41.7	<i>MBF</i>		
	Red Maple		1.2	MBF		
	Red Oak	Pulpwood	20.7	MBF		
	White Oak		1.1	MBF		
	Mixed Aspen		695	Cords		
	<i>B. T. Aspen</i>		564	<i>Cords</i>		
	<i>Quaking Aspen</i>		131	<i>Cords</i>		
	Mixed Hardwood		80	Cords		
	<i>Paper Birch</i>		2	<i>Cords</i>		
	<i>Red Maple</i>		72	<i>Cords</i>		
	<i>Sugar Maple</i>		5	<i>Cords</i>		
	<i>White Ash</i>		1	<i>Cords</i>		
	Mixed Oak		40	Cords		
	<i>Red Oak</i>		39	<i>Cords</i>		
	<i>White Oak</i>		1	<i>Cords</i>		
4	Mixed Aspen	Sawtimber	14.8	MBF	19.2	\$18,931.30
	<i>B. T. Aspen</i>		11.8	<i>MBF</i>		
	<i>Quaking Aspen</i>		3.0	<i>MBF</i>		
	Red Maple	Pulpwood	2.0	MBF		
	Red Oak		5.7	MBF		
	Sugar Maple		4.6	MBF		
	Balsam Fir		36	Cords		
	Mixed Aspen		544	Cords		

DESCRIPTION OF TIMBER BY PU (PU), CON'T

PU	MARKET GROUP	PRODUCT	QUANTITY	UNIT	ACRES	ADVERTISE PRICE
4 con't	<i>B. T. Aspen</i>	<i>Pulpwood</i>	351	<i>Cords</i>		
	<i>Balsam Poplar</i>		58	<i>Cords</i>		
	<i>Quaking Aspen</i>		135	<i>Cords</i>		
	Mixed Hardwood		74	<i>Cords</i>		
	<i>Paper Birch</i>		11	<i>Cords</i>		
	<i>Red Maple</i>		52	<i>Cords</i>		
	<i>Sugar Maple</i>		11	<i>Cords</i>		
	Mixed Oak		4	<i>Cords</i>		
	<i>Red Oak</i>		4	<i>Cords</i>		
	N. White Cedar		14	<i>Cords</i>		
	<i>N. White Cedar</i>	<i>Sawtimber</i>	5.4	<i>MBF</i>		
	<i>N. White Cedar</i>	<i>Pulpwood</i>	3	<i>Cords</i>		
5	Basswood	<i>Sawtimber</i>	3.2	<i>MBF</i>	24.2	\$28,231.20
	Beech		2.9	<i>MBF</i>		
	Mixed Aspen		46.1	<i>MBF</i>		
	<i>B. T. Aspen</i>		45.4	<i>MBF</i>		
	<i>Quaking Aspen</i>		0.7	<i>MBF</i>		
	Paper Birch		0.7	<i>MBF</i>		
	Red Oak		11.7	<i>MBF</i>		
	Sugar Maple		11.1	<i>MBF</i>		
	Mixed Aspen	<i>Pulpwood</i>	502	<i>Cords</i>		
	<i>B. T. Aspen</i>		474	<i>Cords</i>		
	<i>Quaking Aspen</i>		28	<i>Cords</i>		
	Mixed Hardwood		265	<i>Cords</i>		
	<i>American Elm</i>		2	<i>Cords</i>		
	<i>Basswood</i>		66	<i>Cords</i>		
	<i>Beech</i>		21	<i>Cords</i>		
	<i>Black Cherry</i>		3	<i>Cords</i>		
	<i>Ironwood</i>		2	<i>Cords</i>		
	<i>Paper Birch</i>		2	<i>Cords</i>		
	<i>Sugar Maple</i>		167	<i>Cords</i>		
	<i>White Ash</i>		2	<i>Cords</i>		
	Mixed Oak		60	<i>Cords</i>		
	<i>Red Oak</i>		60	<i>Cords</i>		
6	Basswood	<i>Sawtimber</i>	3.5	<i>MBF</i>	26.1	\$30,427.35
	Beech		3.1	<i>MBF</i>		
	Mixed Aspen		49.7	<i>MBF</i>		
	<i>B. T. Aspen</i>		49.0	<i>MBF</i>		
	<i>Quaking Aspen</i>		0.7	<i>MBF</i>		
	Paper Birch		0.7	<i>MBF</i>		
	Red Oak		12.6	<i>MBF</i>		
	Sugar Maple		11.9	<i>MBF</i>		
	Mixed Aspen	<i>Pulpwood</i>	541	<i>Cords</i>		
	<i>B. T. Aspen</i>		511	<i>Cords</i>		
	<i>Quaking Aspen</i>		30	<i>Cords</i>		
	Mixed Hardwood		286	<i>Cords</i>		
	<i>American Elm</i>		2	<i>Cords</i>		
	<i>Basswood</i>		71	<i>Cords</i>		
	<i>Beech</i>		23	<i>Cords</i>		
	<i>Black Cherry</i>		3	<i>Cords</i>		
	<i>Ironwood</i>		2	<i>Cords</i>		
	<i>Paper Birch</i>		2	<i>Cords</i>		
	<i>Sugar Maple</i>		181	<i>Cords</i>		
	<i>White Ash</i>		2	<i>Cords</i>		
	Mixed Oak		65	<i>Cords</i>		

DESCRIPTION OF TIMBER BY PU (PU), CON'T

PU	MARKET GROUP	PRODUCT	QUANTITY	UNIT	ACRES	ADVERTISE PRICE
6 con't	<i>Red Oak</i>	<i>Pulpwood</i>	65	<i>Cords</i>		
7	Basswood	Sawtimber	3.6	MBF	26.9	\$31,329.90
	Beech		3.1	MBF		
	Mixed Aspen		51.2	MBF		
	<i>B. T. Aspen</i>		50.5	<i>MBF</i>		
	<i>Quaking Aspen</i>		0.7	<i>MBF</i>		
	Paper Birch		0.8	MBF		
	Red Oak		13.0	MBF		
	Sugar Maple		12.3	MBF		
	Mixed Aspen	Pulpwood	558	Cords		
	<i>B. T. Aspen</i>		527	<i>Cords</i>		
	<i>Quaking Aspen</i>		31	<i>Cords</i>		
	Mixed Hardwood		294	Cords		
	<i>American Elm</i>		3	<i>Cords</i>		
	<i>Basswood</i>		74	<i>Cords</i>		
	<i>Beech</i>		24	<i>Cords</i>		
	<i>Black Cherry</i>		2	<i>Cords</i>		
	<i>Ironwood</i>		2	<i>Cords</i>		
	<i>Paper Birch</i>		2	<i>Cords</i>		
	<i>Sugar Maple</i>		186	<i>Cords</i>		
	<i>White Ash</i>		1	<i>Cords</i>		
	Mixed Oak		66	Cords		
	<i>Red Oak</i>		66	<i>Cords</i>		
TOTAL:			491.8	MBF		
TOTAL:			5,776	Cords		

Sale Specific Conditions & Requirements

Sale Name: Hunt Creek and Blue Lake Aspen

Sale Number: 54-004-21 Seq#: 2

1 - Sale Area

1.2 - Boundaries

1.2.1 - Painted boundaries (9/19)

The sale boundary and Payment Unit boundaries are marked and identified by blue, red, and yellow paint. Exterior sale boundary lines against private are marked with blue paint. Exterior sale boundary lines against state are marked with red paint. Interior retention boundaries are marked with red paint; no harvesting activities may occur within these areas. Interior Payment Unit boundaries are marked with yellow paint, except for Payment Units 5-7 which use state forest roads as shown on the Timber Sale Map. The painted boundary line trees are not Included Timber and are to be protected. Yellow painted trees designating an interior Payment Unit boundary are only to be cut when all surrounding Payment Units have been paid.

2 - Timber Specifications

2.1 - Included Timber

2.1.1 - Clearcut unit(s) with unmerchantable trees (6/14)

Within Payment Unit(s) 1-7, cut all trees that are two (2) inches or more at DBH, except do not cut any white pine or red pine in Payment Units 1-4.

Note: See spec 5.2.4.4 - 'Dead and down creation' for instructions on orange marked trees.

3 - Payments

3.3 - Pre-measured Sales

3.3.4 - Dividing payment units (7/14)

Payment Unit(s) greater than \$25,000 may be divided at the request of the Purchaser and upon approval of the Unit Manager. Dividing Payment Units is a contract modification which requires a Timber Sale Contract Amendment. There will be only one division per Payment Unit.

3.4 - Damaged Timber

3.4.1 - Damaged timber (7/16)

General Condition and Requirement 3.4 Damaged Timber, defines liquidated damages for undesignated live merchantable trees which are cut or injured. No damage is acceptable to undesignated live merchantable trees. Within the Sale Area, if more than 5% of trees (> 4.5" DBH) within a specified area of the sale are damaged, liquidated damages will be assessed for all trees damaged. Rates will be in accordance with General Condition and Requirement 3.4 Damaged Timber.

4 - Transportation

4.1 - Construction

4.1.3 - Slash and earthen piles (8/04)

Piles or windrows of earth along roads and landings that have been widened or constructed shall be leveled. Slash from road maintenance or construction, including stumps, shall be chipped, utilized, or otherwise removed from the sale.

4.1.6 - Road construction (1/09)

Construction or improvements of existing roads shall be done in such a way as to minimize the environmental and visual impacts. Merchantable trees shall be cut and utilized unless otherwise directed. Non-merchantable trees shall be severed and laid flat on the ground. Slash shall be scattered, and not left in windrows and kept a minimum of 10 feet back from the road edge. Stumps shall be set upright, not left on edge, and be moved at least 10 feet away from the road edge. Disturbed soil shall be feathered into the woods and not left in berms or windrows.

4.1.7 - Road closure (10/11)

All new roads built into the sale must be blocked to vehicle traffic upon completion of the sale. Overgrown roads that are

reopened shall be considered new roads. In general, this will require constructing a four (4') foot high berm of stumps and logs covered with earth. Stumps and brush must be placed along the remainder of the trail. These roads must be rendered impassable to cars and trucks. Contact the sale administrator for specific details of design and placement.

4.2 - Maintenance

4.2.5 - Two wheel drive condition (2/04)

All existing trail roads on and adjacent to the sale area must be passable by two-wheel drive traffic for the duration of the sale.

4.4 - Access

4.4.3 - Access gate (12/08)

The access gates must be locked at the completion of each day unless otherwise approved by the Unit Manager or oil and gas representative. Contact the well operating company or the Atlanta office to obtain a key.

5 - Operations

5.1 - Notification

5.1.1 - Pre-sale conference (10/16)

A pre-sale conference between the Purchaser and sale administrator is required prior to beginning any operations to determine landing and road locations. The Unit Manager or his/her representative must be contacted at least 5 days in advance to schedule the conference.

5.1.3 - Well heads and natural gas pipelines (11/15)

The Purchaser is responsible for contacting the following lessees 30 days prior to operating equipment in the vicinity of well heads or natural gas pipelines. Gas wells are located within or adjacent to Payment Units 1 and 3-7.

Lambda Energy Resources LLC
12012 Wickchester Lane Houston, Texas 77079
Phone: 281-920-9595
Email: info@LambdaEnergyLLC.com)

5.1.4 - Post-sale conference (10/16)

A post-sale conference on site between the Purchaser and sale administrator is required 5 days prior to the completion of active logging operations to determine clean-up and repair of landings, road edges, and the fulfillment of other contract specifications.

5.1.6 - Utility R.O.W. (4/19)

It is the responsibility of the Purchaser to obtain permission from the utility company to utilize the powerline R.O.W. for operations. The powerline is located along the north sale boundary line of Payment Unit 1.

Presque Isle Electric and Gas Cooperative
Phone: 1-800-423-6634
Hours of Operation: Monday-Friday 8:00am-4:30pm)

5.2 - Conduct of Operations

5.2.2 - Hazard Trees/Snags

5.2.2.1 - Den trees (10/16)

Obvious hollow and/or den trees shall be protected and left standing unless they are a safety hazard.

5.2.3 - Operating Restrictions

5.2.3.5 - Oak wilt restriction (1/18)

Within Payment Unit(s) 1-3 and 5-7, unless changed by written agreement, cutting, skidding, hauling within the sale and brushing of access roads to the sale are not permitted during the period of April 15 to July 15. Operations may be allowed if specific steps are taken to prevent damaging uncut oak during the high risk period. Those steps may include completing all road brushing before April 15th and clearing a tree-length buffer along uncut oak cover before April 15th. This is

necessary to reduce the spread of oak wilt. For more information, contact the Unit Manager or his/her representative.

5.2.3.11 - Coppice regeneration protection (4/10)

Timber harvesting in Payment Units 1-7 must be completed within 60 days of severing/cutting stem(s) to minimize damage to deciduous seedling regeneration. Any post-harvest operations, such as chipping, must be completed before sprouting of regeneration occurs. If it is anticipated that chipping will be delayed, then tops shall be carried to one central location or left unchipped. The Unit Manager or his/her representative may cease such operations if sprouting occurs before the operation is complete.

5.2.4 - Dead and Down Creation

5.2.4.4 - Dead and down creation, grouse (6/18)

To encourage grouse and other wildlife, in Payment Unit(s) 1-7, leave on-site all orange painted trees. These trees should be pushed over with the root ball still attached so the base of the tree is suspended off the ground. The crown of the fallen tree should be at or near ground level after it is pushed over. If it is impractical to push the trees over, they may be cut or partially cut and pushed over. Whenever possible, the tree stem should remain suspended off the ground.

5.2.31 - Landing locations (9/13)

Landing locations are shown on the Timber Sale Map. Landings must be confined to these designated sites unless otherwise authorized by the Unit Manager or his/her representative.

5.2.32 - Decking/landing restoration (9/13)

All decking and landing areas must have the surface area restored to a condition equal to or better than before. This is to ensure the proper regeneration of the stand. Wood debris, chips, and "cookies" from trimmings must be removed or scattered away from landing and loading areas and may not be windrowed on the edge.

5.2.38 - No decking against live trees (2/04)

Cut products may not be decked against unmarked or designated leave trees.

5.2.39 - ORV trail/route protection (4/18)

The Hunt Creek Motorcycle Trail is shown on the Timber Sale Map. Do not cut trees or damage posts with yellow ORV markers. All stumps within 5 feet of the trail must be cut flush with the ground. Maintain a 20-foot-wide slash, debris, and rut free zone daily using the ORV trail or route as the centerline. Do not run equipment down the ORV trail or route.

5.4 - Soil Protection

5.4.1 - Rutting restriction, general (7/16)

Operations are to cease immediately if equipment and weather conditions result in rutting of roads and/or skid trails which is 12 inches or greater in depth and 50 feet in length. The Unit Manager or his/her representative may restrict hauling and/or skidding if ruts exceed the specified depth. With the Unit Manager or his/her representative's approval, the Purchaser may return to the area when the risk of rutting has decreased.

5.4.2 - Skid trails (2/04)

Skid trails up and down slopes should be avoided. If however this is unavoidable, these trails will be left in a non-erodible condition using water bars, logs, and slash. Placing of slash on these skid trails while logging is ongoing may alleviate need for any further action. At the direction of the sale administrator, seed, fertilizer, and mulch may also be required.

5.8 - Protection of Endangered Species

5.8.5 - Protection of raptor nests (3/13)

All trees with raptor nests will be protected if found during harvesting operations. Notification will be made to the Unit Manager or his/her representative who will notify the Wildlife Biologist so an on-site evaluation and recommendation can be made, if necessary.

6 - Safety and Fire Prevention

6.2 - Signing

6.2.3 - Recreational trail posting (10/20)

The Purchaser is responsible for posting and maintaining caution signs on the Hunt Creek Motorcycle Trail prior to beginning operations. The trail must be posted at appropriate distances from the Sale Area to warn of logging activity and truck traffic

at both ends of the trail. Signs must be removed when harvest operations are suspended or completed. The Purchaser will provide these signs.



TIMBER SALE MAP

This information provided by authority of Part 525, 1994 PA 451, as amended.

Sale Number	Year
54 - 004	21

Forest Management Unit Atlanta Management Unit		County Montmorency	Mapped By Coy	Date 04/19/2021	Page 1	of 2
Township 29N	Range 03E	Section(s) and Subdivision(s) 20-NENW,S2NW,NWNE,N2SW,S2SE 29-NENW,NE 30-NWSW,S2SW 31- NENW		Scale 1:15,840		

Cover Type

A = Aspen	H = Hemlock	N = Marsh	U = Upland Brush
B = Paper Birch	J = Jack Pine	O = Oak	UM = Upland Mixed
C = Cedar	L = Lowland Brush	P = Lowland Poplar	V = Bog or Marsh
D = Tread Bog	LM = Lowland Mixed	Q = Mixed Swamp Conifer	W = White Pine
E = Swamp Hdwoods	M = Mpl, Bch, Brch	R = Red Pine	X = Non Stocked
F = Spruce Fir	MC = Mixed Conifer	S = Black Spruce	Z = Water
G = Grass	MD = Mixed Deciduous	T = Tamarack	

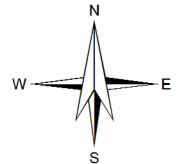
Density

0 = Non Stocked	5 = Pole Timber Medium
1 = Seedling Sapling Poor	6 = Pole Timber Well
2 = Seedling Sapling Medium	7 = Saw Timber Poor
3 = Seedling Sapling Well	8 = Saw Timber Medium
4 = Pole Timber Poor	9 = Saw Timber Well

PU	Acres	PU	Acres
1	21.4	5	24.2
2	27.1	6	26.1
3	22.1	7	26.9
4	19.2		

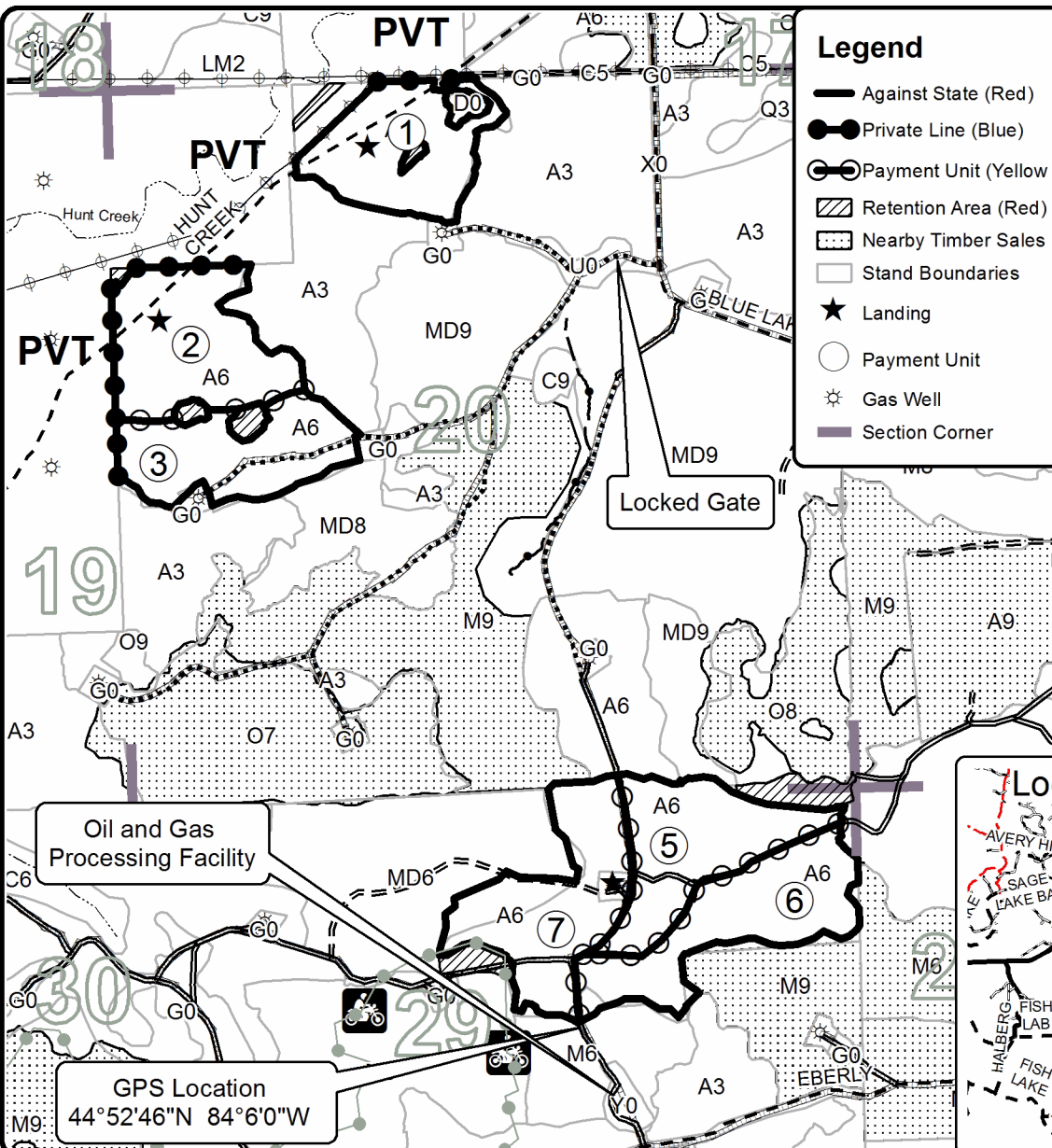
Hunt Creek and Blue Lake Aspen

Compartment 16
167.0 Acres

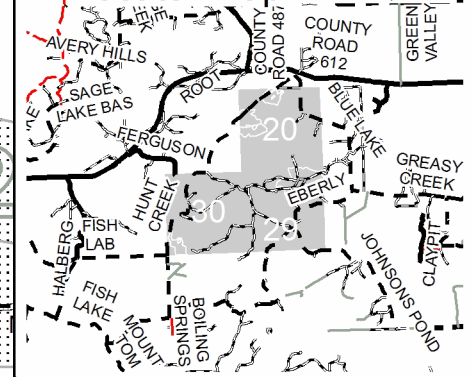


Legend

- Against State (Red)
- Private Line (Blue)
- Payment Unit (Yellow or Road)
- ▨ Retention Area (Red)
- ▤ Nearby Timber Sales
- Stand Boundaries
- ★ Landing
- Payment Unit
- ☆ Gas Well
- Section Corner
- Recreational Trail
- Secondary Road
- Forest Access Route
- Gravel Road
- Private Road
- Temporary Access
- Pipeline
- Powerline
- Drain
- Perennial River



Locator Map 1:150,000



0 0.125 0.25 0.5 0.75 1 Miles



TIMBER SALE MAP

This information provided by authority of Part 525, 1994 PA 451, as amended.

Sale Number	Year
54 - 004	21

Forest Management Unit Atlanta Management Unit	County Montmorency	Mapped By Coy	Date 04/19/2021	Page 2	of 2
Township 29N	Range 03E	Section(s) and Subdivision(s) 20-NENW,S2NW,NWNE,N2SW,S2SE 29-NENW,NE 30-NWSW,S2SW 31- NENW	Scale 1:15,840		

Cover Type				Density	
A = Aspen	H = Hemlock	N = Marsh	U = Upland Brush	0 = Non Stocked	5 = Pole Timber Medium
B = Paper Birch	J = Jack Pine	O = Oak	UM = Upland Mixed	1 = Seedling Sapling Poor	6 = Pole Timber Well
C = Cedar	L = Lowland Brush	P = Lowland Poplar	V = Bog or Marsh	2 = Seedling Sapling Medium	7 = Saw Timber Poor
D = Treed Bog	LM = Lowland Mixed	Q = Mixed Swamp Conifer	W = White Pine	3 = Seedling Sapling Well	8 = Saw Timber Medium
E = Swamp Hdwoods	M = Mpl, Bch, Brch	R = Red Pine	X = Non Stocked	4 = Pole Timber Poor	9 = Saw Timber Well
F = Spruce Fir	MC = Mixed Conifer	S = Black Spruce	Z = Water		
G = Grass	MD = Mixed Deciduous	T = Tamarack			

PU	Acres	PU	Acres
1	21.4	5	24.2
2	27.1	6	26.1
3	22.1	7	26.9
4	19.2		

Hunt Creek and Blue Lake Aspen

Compartment 16
167.0 Acres

