



**DEPARTMENT OF NATURAL RESOURCES  
STATE OF MICHIGAN  
TIMBER SALE PROSPECTUS #7195**

**SCHEDULED SALE DATE AND TIME: 2:00 p.m. (local time) on January 25, 2023.**

**LOCATION: SHINGLETON MGMT UNIT, PO BOX 67, M 28 WEST, SHINGLETON, MI 49884.**

**CONTACT NAME: Robert Burnham**

**PHONE NUMBER: (906) 420-1645**

**PROSPECTUS NOTE:** The bidder is advised to inspect the sale area and review the location, estimated volumes, operating costs and contract terms of proposed sales. Please be aware that some landowners may request 60 days or more notice for access across their land.

Notice is hereby given that bids will be received by the Unit Manager, SHINGLETON MANAGEMENT UNIT, for certain timber on the following described lands:

Hog Island (41-006-22) / T44N, R13W, SEC. 1 , SWNW.

T44N, R13W, SEC. 13, SENW.

T44N, R13W, SEC. 2 , SENW, S1/2NE.

T44N, R13W, SEC. 24, SWSE.

T44N, R13W, SEC. 25, NWNE.

Schoolcraft County, Advertised Price \$54,836.85, 97.7 Acres, Aspen, Hardwood.

**SALE NOTE:** The county must be contacted prior to crossing or harvesting in the county road R-O-W. See Sale Spec 4.3.2 for details.

Within Payment Unit(s) 1, 2, 4 and 5, harvesting is limited to frozen conditions, generally December 1 through March 31 due to wet soils.

County Road 447 is a snowmobile trail. See Sale Spec 5.2.41 for restrictions.

A recreation site such as a trail, pathway, or campground is within the sale area or the vicinity. Certain restrictions/specifications may be applicable including time restrictions.

## TIMBER SALE INFORMATION

Hog Island (41-006-22)

T44N, R13W, SEC. 1; T44N, R13W, SEC. 13; T44N, R13W, SEC. 2; T44N, R13W, SEC. 24; T44N, R13W, SEC. 25.  
Schoolcraft County (Advertised Price \$54,836.85)

SALE NOTE: The county must be contacted prior to crossing or harvesting in the county road R-O-W. See Sale Spec 4.3.2 for details.

Within Payment Unit(s) 1, 2, 4 and 5, harvesting is limited to frozen conditions, generally December 1 through March 31 due to wet soils.

County Road 447 is a snowmobile trail. See Sale Spec 5.2.41 for restrictions.

A recreation site such as a trail, pathway, or campground is within the sale area or the vicinity. Certain restrictions/specifications may be applicable including time restrictions.

A timber sale contract for this lump sum, sealed bid timber sale will be awarded to the responsible bidder offering the highest sealed bid price. All units of volume listed below were estimated using the Inventory Manager computer program and the new Michigan taper model. Bids must be at or above the following advertised price for each product and species:

<u>PRODUCTS &amp; SPECIES</u>	<u>ESTIMATED UNITS*</u>	<u>ADVERTISED PRICE</u>
Sawtimber		
Paper Birch	5.2 MBF	\$ 101.00 / MBF
Red Maple	60.5 MBF	\$ 93.00 / MBF
Sugar Maple	35.7 MBF	\$ 291.00 / MBF
Pulpwood		
Balsam Fir	155 Cords	\$ 8.15 / Cord
Mixed Aspen	1,323 Cords	\$ 19.00 / Cord
Mixed Hardwood	716 Cords	\$ 12.70 / Cord
N. White Cedar	90 Cords	\$ 4.70 / Cord
Paper Birch	126 Cords	\$ 14.30 / Cord
Tamarack	5 Cords	\$ 2.05 / Cord
White Spruce	37 Cords	\$ 15.35 / Cord

\* The total volume is statistically estimated within plus (+) or minus (-) 17.04 percent. There are an estimated 2,594 cords on this timber sale, plus or minus 442 cords at the 95% confidence level. The estimated units are final and not subject to adjustment. Prospective bidders are urged to examine this timber and to make their own estimates of quantity and quality.

### **BOND AND PAYMENT SCHEDULE:**

1. A bond in the amount of \$2,741.84 to insure faithful performance of the conditions of the contract will be deposited by the successful bidder within 21 days of the sale award.
2. Cutting in any sale or unit without the required advance payment would be considered a trespass.
3. Total payment must be paid in advance or according to the following schedule:
  - (a) Ten percent (10%) of the sale value must be paid within 21 days of the sale award.
  - (b) The 10% down payment will be credited towards the first unit cut.
  - (c) Payment for each of the following units must be made before cutting begins in that unit:

<u>PAYMENT UNIT NUMBER</u>	<u>PERCENT OF TOTAL SALE VALUE</u>
01	14.2%
02	24.1%
03	50.5%
04	0.9%
05	10.3%

4. If no cutting takes place, the 10% down payment will not be refunded.
5. Operations on the contract issued will terminate on 06/30/2026.

### **SALE STATISTICS**

Volumes were calculated in cubic feet using the Michigan taper model. Cubic foot volume includes all wood inside bark for the product indicated. For display purposes, cubic feet were converted to cords and MBF using a simple conversion factor, e.g. 79 cubic feet per cord and 185 cubic feet per MBF. The cubic foot volumes are precise; the cords and MBF volumes are not. Cubic foot volume cannot be directly converted to cords or boards with precision.

## SALE VOLUMES

The total estimated sale volume may not equal the sum of the species/products due to the nature of statistical calculations associated with double sampling methodology.

VOLUME			STATISTICAL RANGE IN CORDS	
TOTAL CUBIC FEET	TOTAL CORDS	PERCENT ERROR	MINIMUM	MAXIMUM
204,888	2,594	17.04%	2,151	3,036

## VDU VOLUMES

A VDU is a Volume Determination Unit. Volumes and their associated statistics are calculated at the VDU level and summarized to the sale level. There is often a one to one relationship between a VDU and a Payment Unit, but not always, depending on the cruise design. Refer to the VDU TO PAYMENT UNIT table.

	VOLUME			RANGE IN CORDS	
VDU	TOTAL CUBIC FEET	TOTAL CORDS	PERCENT ERROR	MINIMUM	MAXIMUM
1	29,946	379	27.74%	274	484
2	5,419	69	40.63%	41	96
3	35,632	451	26.34%	332	570
4	99,818	1,264	20.44%	1,005	1,522
5	5,467	69	104.71%	3	142
6	28,606	362	30.51%	252	473
<b>TOTAL:</b>	<b>204,888</b>	<b>2,594</b>		<b>1,900</b>	<b>3,287</b>

## VDU TO PAYMENT UNIT

When a VDU is associated with more than one Payment Unit (PU), the VDU volumes are assigned to the PU based on acres of the VDU within the PU.

VDU	VDU ACRES	PU	PU ACRES
1	8.0	1	8.0
2	3.4	1	3.4
3	42.7	2	42.7
4	29.0	3	29.0
5	3.8	4	3.8
6	10.8	5	10.8
<b>TOTAL:</b>	<b>97.7</b>		<b>97.7</b>

**DESCRIPTION OF TIMBER BY PU (PU)**

PU	MARKET GROUP	PRODUCT	QUANTITY	UNIT	ACRES	ADVERTISE PRICE
1	Paper Birch	Sawtimber	5.2	MBF	11.4	\$7,771.10
	Red Maple		5.5	MBF		
	Balsam Fir	Pulpwood	26	Cords		
	Mixed Aspen		266	Cords		
	B. T. Aspen		264	Cords		
	Balsam Poplar		2	Cords		
	Mixed Hardwood		59	Cords		
	Black Ash		11	Cords		
	Red Maple		40	Cords		
	Yellow Birch		8	Cords		
	N. White Cedar		46	Cords		
	Paper Birch		18	Cords		
	White Spruce		16	Cords		
	2	Red Maple	Sawtimber	55.0		
Sugar Maple			15.5	MBF		
Mixed Hardwood		Pulpwood	284	Cords		
Beech			55	Cords		
Red Maple			138	Cords		
Sugar Maple			89	Cords		
Yellow Birch			2	Cords		
3		Sugar Maple	Sawtimber	20.2	MBF	29.0
	Balsam Fir	Pulpwood	29	Cords		
	Mixed Aspen		845	Cords		
	B. T. Aspen		814	Cords		
	Quaking Aspen		31	Cords		
	Mixed Hardwood		311	Cords		
	Basswood		15	Cords		
	Beech		10	Cords		
	Black Cherry		11	Cords		
	Red Maple		18	Cords		
	Sugar Maple		193	Cords		
	White Ash		64	Cords		
	Paper Birch		108	Cords		
	4	Balsam Fir	Pulpwood	17	Cords	
Mixed Hardwood			9	Cords		
Black Ash			9	Cords		
N. White Cedar			39	Cords		
White Spruce			5	Cords		
5	Balsam Fir	Pulpwood	83	Cords	10.8	\$5,656.90
	Mixed Aspen		212	Cords		
	B. T. Aspen		212	Cords		
	Mixed Hardwood		53	Cords		
	Red Maple		11	Cords		
	Sugar Maple		42	Cords		
	N. White Cedar		5	Cords		
	Tamarack		5	Cords		
White Spruce		16	Cords			
TOTAL:			101.4	MBF		
TOTAL:			2,452	Cords		

## **Sale Specific Conditions & Requirements**

**Sale Name: Hog Island**

**Sale Number: 41-006-22 Seq#: 1**

### **1 - Sale Area**

#### **1.2 - Boundaries**

##### **1.2.1 - Painted boundaries (9/19)**

The sale boundary and Payment Unit boundaries are marked and identified by blue, red and yellow paint. Exterior sale boundary lines against private property are marked with blue paint. Exterior sale boundary lines against state are marked with red paint. Interior Payment Unit boundaries are marked with yellow paint. The painted boundary line trees are not Included Timber and are to be protected unless marked with orange paint. Yellow painted trees designating an interior Payment Unit boundary are only to be cut when all surrounding Payment Units have been paid.

### **2 - Timber Specifications**

#### **2.1 - Included Timber**

##### **2.1.1 - Clearcut unit(s) with unmerchantable trees (6/14)**

Within Payment Unit(s) 1, 3 & 5, cut all aspen and hardwood trees that are two (2) inches or more at DBH. In addition, cut all other trees that meet minimum piece specifications in 2.2 Utilization.

##### **2.1.2 - Clearcut unit(s) w/o unmerchantable trees (8/11)**

Within Payment Unit(s) 4, cut all trees which meet minimum piece specifications in 2.2 Utilization.

##### **2.1.3 - Cut tree marked unit(s) (12/08)**

Within Payment Unit(s) 2, all trees are designated for cutting when marked with orange paint above and below stump height, regardless of merchantability.

### **3 - Payments**

#### **3.3 - Pre-measured Sales**

##### **3.3.4 - Dividing payment units (7/14)**

Payment Unit(s) with a value greater than \$20,000 may be divided at the request of the Purchaser and upon approval of the Unit Manager. Dividing Payment Units is a contract modification which requires a Timber Sale Contract Amendment.

### **4 - Transportation**

#### **4.1 - Construction**

##### **4.1.3 - Slash and earthen piles (8/04)**

Piles or windrows of earth along roads and landings that have been widened or constructed shall be leveled. Slash from road maintenance or construction, including stumps, shall be dispersed throughout the sale.

##### **4.1.4 - Timber removed for construction (12/09)**

Trees cut or damaged in the process of pre-approved road, landing or skid trail construction will be decked in an area separate from other Designated Timber and not removed until measured by the sale administrator. Payment will be made at the specified Purchase Unit Price.

##### **4.1.6 - Road construction (1/09)**

Construction of new roads or improvements of existing roads shall be done in such a way as to minimize the environmental and visual impacts. Merchantable trees shall be cut and utilized unless otherwise directed. Non-merchantable trees shall be severed and laid flat on the ground. Slash shall be scattered, and not left in windrows and kept a minimum of 10 feet back from the road edge. Stumps shall be set upright, not left on edge, and be moved at least 10 feet away from the road edge. Disturbed soil shall be feathered into the woods and not left in berms or windrows.

##### **4.1.7 - Road closure (10/11)**

All new roads built into the sale must be blocked to vehicle traffic within 30 days of completion of hauling. Overgrown roads

that are reopened shall be considered new roads. In general, this will require constructing double earthen berms at strategic locations. These roads must be rendered impassable to cars and trucks. Contact the sale administrator for specific details of design and placement.

#### 4.3 - Public Right-of-Way

##### 4.3.2 - County R-O-W (12/06)

The county must be contacted prior to crossing or harvesting in the county road R-O-W. This applies to Payment Units 1-5 and County Roads 447, Burns Road, and Zellar Road.

### 5 - Operations

#### 5.1 - Notification

##### 5.1.6 - Utility R.O.W. (4/19)

It is the responsibility of the Purchaser to obtain permission from the utility company to utilize the power line R.O.W. for operations. This applies to Payment Units 2 & 3.

#### 5.2 - Conduct of Operations

##### 5.2.2 - Hazard Trees/Snags

###### 5.2.2.1 - Den trees (10/16)

Obvious hollow and/or den trees shall be protected and left standing unless they are a safety hazard.

##### 5.2.3 - Operating Restrictions

###### 5.2.3.1 - Operating restrictions (9/11)

Within Payment Unit(s) 1, 2, 4, and 5, unless changed by written agreement, cutting, skidding, and hauling are limited frozen conditions. This period is generally from (but not limited to) December 1 thru March 31. This restriction is due to wet soils.

###### 5.2.32 - Decking/landing restoration (9/13)

All decking and landing areas must have the surface area restored to a condition equal to or better than before. This is to ensure the proper regeneration of the stand. Wood debris, chips and "cookies" from trimmings must be removed or scattered away from landing and loading areas and may not be windrowed on the edge. No decking of forest products will be permitted in the powerline R.O.W.

###### 5.2.38 - No decking against live trees (2/04)

Cut products may not be decked against unmarked or designated leave trees.

###### 5.2.41 - Snowmobile trail protection (9/11)

County Road 447 is a snowmobile trail. Do not cut or damage posts with orange trail markers or traffic control signs. Maintain a 20 foot wide slash, debris, and rut free zone daily using the snowmobile trail as the centerline. No decking of forest products will be permitted along the snowmobile trail.

#### 5.8 - Protection of Endangered Species

##### 5.8.3 - Red shoulder hawk or goshawk (2/16)

In the event that an active red shoulder hawk or goshawk nest is found, the contract may be amended to protect the nest site until the nest is determined to be inactive. The value of the trees in this excluded area will be refunded or credited to the Purchaser. The nest will be buffered with a five-chain radius (eight acre) protection area, centered on the nest tree, in which there will be no cutting or new roads constructed. Avoid human disturbance, including loading and skidding, in the protection area.

An additional zone of five chains (ten chains centered on the active nest tree) will be established in which there is no management activity from April 1 to July 30. Limit biomass harvesting and chipping operations within this ten-chain zone, retain the maximum one-third of residues per the Woody Biomass Harvesting Guidelines (Michigan DNR 2010). Nests determined to be inactive will be protected with a one-chain no-harvest buffer.

### 6 - Safety and Fire Prevention

## 6.2 - Signing

### 6.2.1 - Road posting (10/20)

The Purchaser is responsible for posting and maintaining caution signs on nearby County Roads prior to beginning operations. The road must be posted at appropriate distances from the sale area to warn of logging activity and truck traffic. Signs must be removed when harvest operations are suspended or completed. The Purchaser will provide these signs.

### 6.2.2 - Snowmobile trail posting (10/20)

The Purchaser is responsible for posting and maintaining caution signs on County Road 447 prior to beginning operations during the snowmobile season (approximately December 1 to March 31). The trail must be posted at appropriate distances from the sale area to warn of logging activity and truck traffic. Signs must be removed when harvest operations are suspended or completed. The Purchaser will provide these signs.

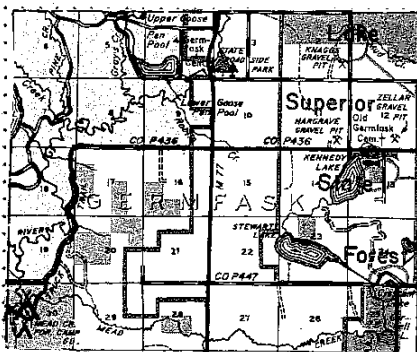


## TIMBER SALE MAP

This information provided by authority of Part 5, 1994 PA 451, as amended.

Sale Number	Year
06	22

Forest Management Unit <i>Shingleton</i>	County <i>Schoolcraft</i>	Mapped By <i>T. Burnis</i>	Date <i>4/1/22</i>	Page <i>1</i>	of <i>2</i>
Compartment Number <i>007</i>	Township <i>44 N</i>	Range <i>13 W</i>	Section(s) and Subdivision(s) <i>SWNW 1/4 SEW. 3/4</i>		
Cover Type			Density		
A = Aspen B = Paper Birch C = Cedar D = Treed Bog E = Swamp Hardwoods F = Spruce/Fir G = Grass H = Hemlock	J = Jack Pine K = Rock L = Lowland Brush LM = Lowland Mix Forest M = Maple, Beech, Birch MC = Mixed Conifer MD = Mixed Deciduous N = Marsh	O = Oak P = Lowland Poplar Q = Mixed Swamp Conifer R = Red Pine S = Black Spruce T = Tamarack	U = Upland Brush UM = Upland Mix Forest V = Bog or Marsh W = White Pine X = Non Stocked Y = Sand Z = Water	0 = Non Stocked 1 = Seedling Sapling Poor 2 = Seedling Sapling Medium 3 = Seedling Sapling Well 4 = Pole Timber Poor	5 = Pole Timber Medium 6 = Pole Timber Well 7 = Saw Timber Poor 8 = Saw Timber Medium 9 = Saw Timber Well



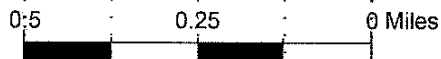
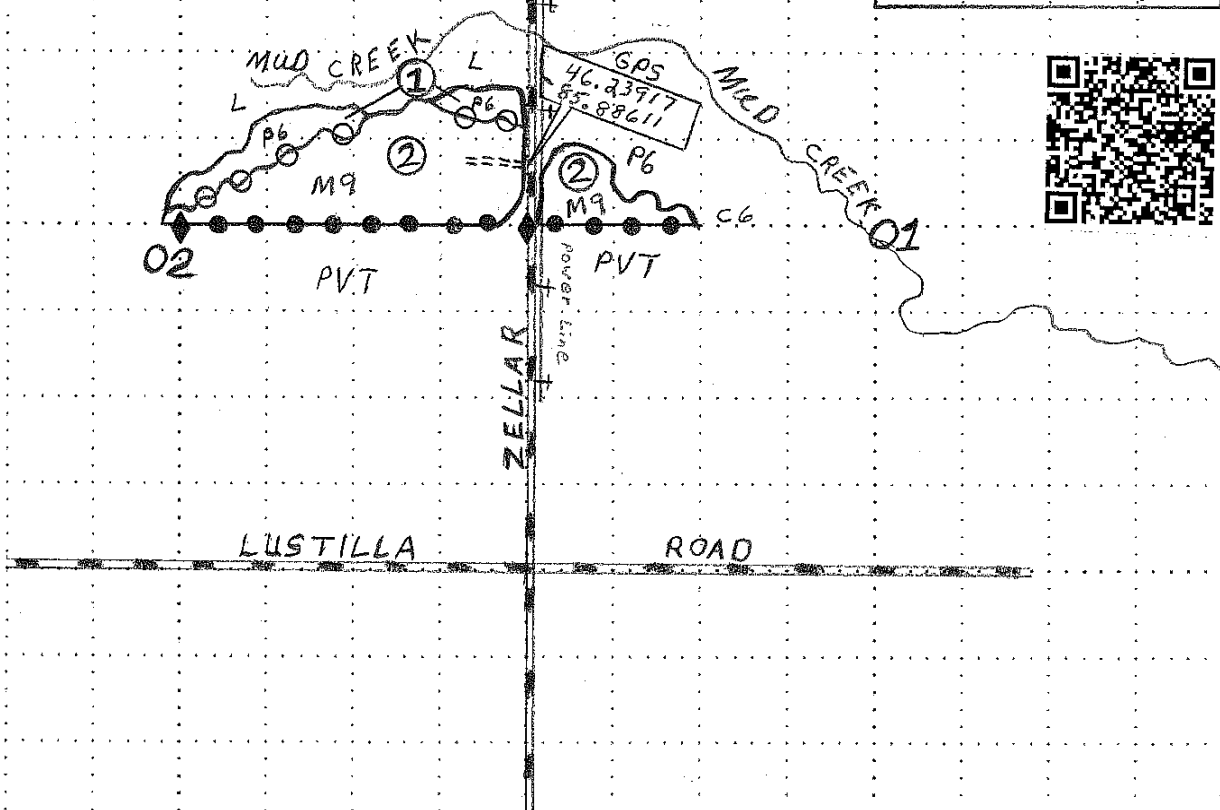
## HOG ISLAND



Unit	Acres
1	11.4
2	43.7
3	29.0
4	3.8
5	10.6
Total	97.7


## LEGEND

	Blue Paint
	Yellow Paint
	Red Paint
	Dirt Road
	Gravel Road
	Unit Numbers
	Survey Corners
	Power Line



# TIMBER SALE MAP

*This information provided by authority of Part 5, 1994 PA 451, as amended.*

	Michigan Department of Natural Resources - Forest Resources Division				Sale Number		Year	
	<b>TIMBER SALE MAP</b> This information provided by authority of Part 5, 1994 PA 451, as amended.				06		22	
Forest Management Unit <i>Shingleton</i>		County <i>Schoolcraft</i>	Mapped By <i>T. Burnis</i>		Date <i>4/1/22</i>	Page of <i>2</i> of <i>2</i>		
Compartment Number <i>007</i>		Township <i>44 N</i>	Range <i>13 W</i>		Section(s) and Subdivision(s) <i>34 SW SE</i> <i>23 NW NE</i>			
Cover Type					Density			
A = Aspen B = Paper Birch C = Cedar D = Treed Bog E = Swamp Hardwoods F = Spruce/Fir G = Grass H = Hemlock J = Jack Pine K = Rock L = Lowland Brush LM = Lowland Mix Forest M = Maple, Beech, Birch MC = Mixed Conifer MD = Mixed Deciduous N = Marsh O = Oak P = Lowland Poplar Q = Mixed Swamp Conifer R = Red Pine S = Black Spruce T = Tamarack U = Upland Brush UM = Upland Mix Forest V = Bog or Marsh W = White Pine X = Non Stocked Y = Sand Z = Water					0 = Non Stocked 1 = Seedling Sapling Poor 2 = Seedling Sapling Medium 3 = Seedling Sapling Well 4 = Pole Timber Poor 5 = Pole Timber Medium 6 = Pole Timber Well 7 = Saw Timber Poor 8 = Saw Timber Medium 9 = Saw Timber Well			

