



**DEPARTMENT OF NATURAL RESOURCES  
STATE OF MICHIGAN  
TIMBER SALE PROSPECTUS #7132**

SCHEDULED SALE DATE AND TIME: **9:00 a.m. (local time) on October 7, 2022.**

LOCATION: **ROSCOMMON MGMT UNIT, PO BOX 218, ROSCOMMON, MI 48653.**

CONTACT NAME: Doug Bates

PHONE NUMBER: (989) 275-4622

PROSPECTUS NOTE: The bidder is advised to inspect the sale area and review the location, estimated volumes, operating costs and contract terms of proposed sales. Please be aware that some landowners may request 60 days or more notice for access across their land.

Notice is hereby given that bids will be received by the Unit Manager, ROSCOMMON MANAGEMENT UNIT, for certain timber on the following described lands:

South Branch Aspen (71-016-22) / T24N, R01W, SEC. 10, S1/2NW,SW,NWSE.

T24N, R01W, SEC. 16, NENE.

T24N, R01W, SEC. 8 , SWNE,E1/2SW,N1/2SE,SWSE.

T24N, R01W, SEC. 9 , SENE,SESE.

Roscommon County, Advertised Price \$86,453.80, 85.0 Acres, Aspen, Hardwood.

# TIMBER SALE INFORMATION

South Branch Aspen (71-016-22)

T24N, R01W, SEC. 10; T24N, R01W, SEC. 16; T24N, R01W, SEC. 8; T24N, R01W, SEC. 9.

Roscommon County (Advertised Price \$86,453.80)

A timber sale contract for this lump sum, sealed bid timber sale will be awarded to the responsible bidder offering the highest sealed bid price. All units of volume listed below were estimated using the Inventory Manager computer program and the new Michigan taper model. Bids must be at or above the following advertised price for each product and species:

<u>PRODUCTS &amp; SPECIES</u>	<u>ESTIMATED UNITS*</u>	<u>ADVERTISED PRICE</u>
Sawtimber		
Basswood	13.0 MBF	\$ 61.00 / MBF
Bl/R/Hybrid Oak	24.0 MBF	\$ 105.00 / MBF
Black Cherry	21.9 MBF	\$ 131.00 / MBF
Mixed Aspen	342.3 MBF	\$ 73.00 / MBF
Paper Birch	14.5 MBF	\$ 32.00 / MBF
Red Maple	23.8 MBF	\$ 67.00 / MBF
Red Pine	58.5 MBF	\$ 92.00 / MBF
White Pine	16.4 MBF	\$ 58.00 / MBF
Pulpwood		
Balsam Fir	327 Cords	\$ 17.65 / Cord
Bl/R/Hybrid Oak	38 Cords	\$ 16.05 / Cord
Mixed Aspen	1,104 Cords	\$ 26.10 / Cord
Mixed Hardwood	110 Cords	\$ 14.25 / Cord
Red Maple	115 Cords	\$ 14.25 / Cord
Red Pine	119 Cords	\$ 35.10 / Cord
White Pine	118 Cords	\$ 33.90 / Cord
White Spruce	20 Cords	\$ 15.65 / Cord

\* The total volume is statistically estimated within plus (+) or minus (-) 12.97 percent. There are an estimated 3,135 cords on this timber sale, plus or minus 407 cords at the 95% confidence level. The estimated units are final and not subject to adjustment. Prospective bidders are urged to examine this timber and to make their own estimates of quantity and quality.

## BOND AND PAYMENT SCHEDULE:

1. A bond in the amount of \$4,322.69 to insure faithful performance of the conditions of the contract will be deposited by the successful bidder within 21 days of the sale award.
2. Cutting in any sale or unit without the required advance payment would be considered a trespass.
3. Total payment must be paid in advance or according to the following schedule :
  - (a) Ten percent (10%) of the sale value must be paid within 21 days of the sale award.
  - (b) The 10% down payment will be credited towards the first unit cut.
  - (c) Payment for each of the following units must be made before cutting begins in that unit:

<u>PAYMENT UNIT NUMBER</u>	<u>PERCENT OF TOTAL SALE VALUE</u>
01	29.4%
02	16.1%
03	3.7%
04	4.8%
05	18.4%
06	27.6%

4. If no cutting takes place, the 10% down payment will not be refunded.
5. Operations on the contract issued will terminate on 12/31/2024.

## SALE STATISTICS

Volumes were calculated in cubic feet using the Michigan taper model. Cubic foot volume includes all wood inside bark for the product indicated. For display purposes, cubic feet were converted to cords and MBF using a simple conversion factor, e.g. 79 cubic feet per cord and 185 cubic feet per MBF. The cubic foot volumes are precise; the cords and MBF volumes are not. Cubic foot volume cannot be directly converted to cords or boards with precision.

## SALE VOLUMES

The total estimated sale volume may not equal the sum of the species/products due to the nature of statistical calculations associated with double sampling methodology.

VOLUME			STATISTICAL RANGE IN CORDS	
TOTAL CUBIC FEET	TOTAL CORDS	PERCENT ERROR	MINIMUM	MAXIMUM
247,684	3,135	12.97%	2,728	3,542

## VDU VOLUMES

A VDU is a Volume Determination Unit. Volumes and their associated statistics are calculated at the VDU level and summarized to the sale level. There is often a one to one relationship between a VDU and a Payment Unit, but not always, depending on the cruise design. Refer to the VDU TO PAYMENT UNIT table.

	VOLUME			RANGE IN CORDS	
VDU	TOTAL CUBIC FEET	TOTAL CORDS	PERCENT ERROR	MINIMUM	MAXIMUM
22	45,315	574	24.11%	435	712
29	68,653	869	28.61%	620	1,118
80	74,485	943	21.57%	739	1,146
93	25,897	328	64.77%	115	540
94	6,676	85	54.00%	39	130
101	10,010	127	62.90%	47	206
124	16,647	211	51.77%	102	320
<b>TOTAL:</b>	<b>247,684</b>	<b>3,135</b>		<b>2,098</b>	<b>4,172</b>

## VDU TO PAYMENT UNIT

When a VDU is associated with more than one Payment Unit (PU), the VDU volumes are assigned to the PU based on acres of the VDU within the PU.

VDU	VDU ACRES	PU	PU ACRES
22	18.4	5	18.4
29	30.5	6	30.5
80	17.5	1	17.5
93	6.4	2	6.4
94	1.5	2	1.5
101	3.1	3	3.1
124	7.6	4	7.6
<b>TOTAL:</b>	<b>85.0</b>		<b>85.0</b>

**DESCRIPTION OF TIMBER BY PU (PU)**

PU	MARKET GROUP	PRODUCT	QUANTITY	UNIT	ACRES	ADVERTISE PRICE
1	Basswood	Sawtimber	4.5	MBF	17.5	\$25,437.20
	Mixed Aspen		130.5	MBF		
	<i>B. T. Aspen</i>		12.3	<i>MBF</i>		
	<i>Quaking Aspen</i>		118.2	<i>MBF</i>		
	Balsam Fir	Pulpwood	65	Cords		
	<i>Balsam Fir</i>		65	<i>Cords</i>		
	Mixed Aspen		525	Cords		
	<i>B. T. Aspen</i>		9	<i>Cords</i>		
	<i>Quaking Aspen</i>		516	<i>Cords</i>		
	Mixed Hardwood		1	Cords		
	<i>Basswood</i>		1	<i>Cords</i>		
	Red Pine		22	Cords		
2	Basswood	Sawtimber	7.7	MBF	7.9	\$13,899.50
	Bl/R/Hybrid Oak		6.0	MBF		
	Black Cherry		1.5	MBF		
	Mixed Aspen		76.8	MBF		
	<i>B. T. Aspen</i>	Pulpwood	9.6	<i>MBF</i>		
	<i>Quaking Aspen</i>		67.2	<i>MBF</i>		
	Paper Birch		2.4	MBF		
	Red Pine		34.3	MBF		
	Balsam Fir		7	Cords		
	<i>Balsam Fir</i>		7	<i>Cords</i>		
	Bl/R/Hybrid Oak		3	Cords		
	Mixed Aspen		70	Cords		
	<i>B. T. Aspen</i>		18	<i>Cords</i>		
	<i>Quaking Aspen</i>		52	<i>Cords</i>		
	Mixed Hardwood		18	Cords		
	<i>Basswood</i>		4	<i>Cords</i>		
	<i>Black Cherry</i>		8	<i>Cords</i>		
	<i>Paper Birch</i>		6	<i>Cords</i>		
	Red Pine		43	Cords		
3	Basswood	Sawtimber	0.8	MBF	3.1	\$3,203.95
	Mixed Aspen		7.0	MBF		
	<i>Quaking Aspen</i>		7.0	<i>MBF</i>		
	Paper Birch		0.7	MBF		
	Red Pine	Pulpwood	1.5	MBF		
	Balsam Fir		22	Cords		
	<i>Balsam Fir</i>		22	<i>Cords</i>		
	Mixed Aspen		48	Cords		
	<i>Quaking Aspen</i>		48	<i>Cords</i>		
	Mixed Hardwood		15	Cords		
	<i>Basswood</i>		3	<i>Cords</i>		
	<i>Black Cherry</i>		10	<i>Cords</i>		
	<i>Paper Birch</i>		2	<i>Cords</i>		
	Red Pine		9	Cords		
	White Spruce		20	Cords		
4	Balsam Fir	Pulpwood	106	Cords	7.6	\$4,142.05
	<i>Balsam Fir</i>	<i>Sawtimber</i>	9.9	<i>MBF</i>		
	<i>Balsam Fir</i>	<i>Pulpwood</i>	86	<i>Cords</i>		
	Mixed Aspen		69	Cords		
	<i>Quaking Aspen</i>		69	<i>Cords</i>		
	Mixed Hardwood		16	Cords		
	<i>Black Cherry</i>		16	<i>Cords</i>		
	Red Maple		17	Cords		
5	Bl/R/Hybrid Oak	Sawtimber	16.4	MBF	18.4	\$15,897.65

**DESCRIPTION OF TIMBER BY PU (PU), CON'T**

PU	MARKET GROUP	PRODUCT	QUANTITY	UNIT	ACRES	ADVERTISE PRICE
5 con't	Mixed Aspen	Sawtimber	107.3	MBF		
	<i>B. T. Aspen</i>		38.8	<i>MBF</i>		
	<i>Quaking Aspen</i>		68.5	<i>MBF</i>		
	Paper Birch		3.2	MBF		
	Red Maple		10.4	MBF		
	White Pine		4.5	MBF		
	Balsam Fir		30	Cords		
	<i>Balsam Fir</i>		30	<i>Cords</i>		
	Bl/R/Hybrid Oak		9	Cords		
	Mixed Aspen		88	Cords		
	<i>B. T. Aspen</i>		36	<i>Cords</i>		
	<i>Quaking Aspen</i>		52	<i>Cords</i>		
	Mixed Hardwood		44	Cords		
	<i>Sugar Maple</i>		2.1	<i>MBF</i>		
	<i>Black Cherry</i>		28	<i>Cords</i>		
	<i>Paper Birch</i>	1	<i>Cords</i>			
	<i>Sugar Maple</i>	11	<i>Cords</i>			
	Red Maple	54	Cords			
	White Pine	27	Cords			
6	Bl/R/Hybrid Oak	Sawtimber	1.6	MBF	30.5	\$23,873.45
	Black Cherry		20.4	MBF		
	Mixed Aspen		20.7	MBF		
	<i>Quaking Aspen</i>		20.7	<i>MBF</i>		
	Paper Birch		8.2	MBF		
	Red Maple		13.4	MBF		
	Red Pine		22.7	MBF		
	White Pine		11.9	MBF		
	Balsam Fir		97	Cords		
	<i>Balsam Fir</i>		97	<i>Cords</i>		
	Bl/R/Hybrid Oak		26	Cords		
	Mixed Aspen		304	Cords		
	<i>B. T. Aspen</i>		10	<i>Cords</i>		
	<i>Quaking Aspen</i>		294	<i>Cords</i>		
	Mixed Hardwood		16	Cords		
	<i>Black Cherry</i>		12	<i>Cords</i>		
	<i>Paper Birch</i>		4	<i>Cords</i>		
	Red Maple		44	Cords		
	Red Pine		45	Cords		
	White Pine	91	Cords			
TOTAL:			514.4	MBF		
TOTAL:			1,951	Cords		

## **Sale Specific Conditions & Requirements**

**Sale Name: South Branch Aspen**

**Sale Number: 71-016-22 Seq#: 1**

### **1 - Sale Area**

#### **1.2 - Boundaries**

##### **1.2.1 - Painted boundaries (9/19)**

The sale boundary and Payment Unit boundaries are marked and identified by blue, red and yellow paint. Exterior sale boundary lines against private property are marked with blue paint. Exterior sale boundary lines against state are marked with red paint. Interior Payment Unit boundaries are marked with yellow paint. The painted boundary line trees are not Included Timber and are to be protected. Yellow painted trees designating an interior Payment Unit boundary are only to be cut when all surrounding Payment Units have been paid.

### **2 - Timber Specifications**

#### **2.1 - Included Timber**

##### **2.1.1 - Clearcut unit(s) with unmerchantable trees (6/14)**

Within Payment Unit(s) #'s 1-6, cut all trees that are two (2) inches or more at DBH.

EXCEPTION: Within Payment Units 1, 2, and 5, do not cut any white pine 18" or larger at dbh.

#### **2.2 - Utilization**

##### **2.2.3 - Stump heights (4/07)**

Stump heights within the Sale Area shall not exceed 12 inches for trees greater than 10 inches DBH and 4 inches for trees smaller than 10 inches DBH.

### **3 - Payments**

#### **3.3 - Pre-measured Sales**

##### **3.3.4 - Dividing payment units (7/14)**

Payment Unit(s) 1, 5, and 6 may be divided at the request of the Purchaser and upon approval of the Unit Manager. Dividing Payment Units is a contract modification which requires a Timber Sale Contract Amendment.

#### **3.4 - Damaged Timber**

##### **3.4.1 - Damaged timber (7/16)**

General Condition and Requirement 3.4 Damaged Timber, defines liquidated damages for undesignated live merchantable trees which are cut or injured.

No damage is acceptable to undesignated live merchantable trees. Within the sale area, if more than 5% of trees (> 4.5" DBH) within a specified area of the sale are damaged, liquidated damages will be assessed for all trees damaged. Rates will be in accordance with General Condition and Requirement 3.4 Damaged Timber.

### **4 - Transportation**

#### **4.1 - Construction**

##### **4.1.6 - Road construction (1/09)**

Construction of new roads or improvements of existing roads shall be done in such a way as to minimize the environmental and visual impacts. Merchantable trees shall be cut and utilized unless otherwise directed. Non-merchantable trees shall be severed and laid flat on the ground. Slash shall be scattered, and not left in windrows and kept a minimum of 10 feet back from the road edge. Stumps shall be set upright, not left on edge, and be moved at least 10 feet away from the road edge. Disturbed soil shall be feathered into the woods and not left in berms or windrows.

#### **4.2 - Maintenance**

##### **4.2.3 - Road maintenance (8/13)**

The following road maintenance is required: Within 60 days of completion of hauling, or if no hauling occurs for 60 days, the road must be maintained and graded to the condition it was prior to usage. This includes cleaning of drainage areas, grading, crowning and filling with gravel, if necessary. Damages will be assessed if grading/repair does not occur.

#### 4.2.5 - Two wheel drive condition (2/04)

All existing trail roads on and adjacent to the sale area must be passable by two-wheel drive traffic for the duration of the sale.

## 5 - Operations

### 5.1 - Notification

#### 5.1.1 - Pre-sale conference (10/16)

A pre-sale conference between the Purchaser and sale administrator is required prior to beginning any operations to determine landing sites and potential new road locations.

#### 5.1.4 - Post-sale conference (10/16)

A post-sale conference on site between the Purchaser and sale administrator is required prior to the completion of active logging operations to determine clean-up and repair of landings, road edges, and the fulfillment of other contract specifications.

### 5.2 - Conduct of Operations

#### 5.2.1 - Slash

##### 5.2.1.1 - Slash within sale area (9/16)

No trees are to be felled outside the sale area and all slash is to be kept at least 10 feet back from the red paint line. If sale boundary lines are along a public road or highway, then slash must be removed 50' from these lines per General Condition & Requirement 5.2.1.

##### 5.2.1.8 - Slash height (12/08)

No slash or tree tops may exceed 24 inches in height. Slash is not to be left in "windrows" from harvesting/processing operations but scattered evenly over the sale area post operations.

#### 5.2.2 - Hazard Trees/Snags

##### 5.2.2.1 - Den trees (10/16)

Obvious hollow and/or den trees shall be protected and left standing unless they are a safety hazard.

#### 5.2.3 - Operating Restrictions

##### 5.2.3.11 - Coppice regeneration protection (4/10)

Timber harvesting in any Payment Unit must be completed before significant sprouting occurs in that Payment Unit to minimize damage to the new regeneration. Any post-harvest operations, such as chipping, must be completed before sprouting of regeneration occurs. If it is anticipated that chipping will be delayed, then tops shall be carried to one central location or left unchipped. Should damages occur to the new regeneration, the damages will be assessed per Specification 3.4.1 - Damaged Timber. If it is anticipated that chipping will be delayed, then tops shall be carried to one central location, preferably the landing. A third-party entity may be brought in to chip the tops/slash, before new sprouting occurs, should the contract holder fail to present in a timely manner arrangements approved by the Department for protecting the new regeneration. The Unit Manager or his/her representative may also cease such operations if sprouting occurs before the operation is complete and the Payment Unit(s) will be counted as incomplete with liquidated damages assessed accordingly.

#### 5.2.4 - Dead and Down Creation

##### 5.2.4.2 - Dead and down creation, hare and grouse (1/14)

To improve habitat for snowshoe hare, grouse, and other species, the Purchaser is to leave two trees, nine (9) inches or larger in diameter on the ground for every two acres within payment units #'s 1-6. They should be scattered throughout the sale or positioned per the sale administrators instructions. If possible, the logs or trees should be felled so they overlap. Note these pieces should have a minimum length of five feet. They can be of any tree species and can be an un-merchantable piece of wood or a full tree.

5.2.4.3 - Dead and down creation, dead trees (6/07)

Except as provided for in General Condition and Requirement 5.2.2, no dead trees, standing or down, are to be cut, skidded, or processed.

5.2.4.4 - Dead and down creation, grouse (6/18)

To encourage grouse and other wildlife, in Payment Unit(s) 1-6 leave at least 1 large top pile per every 2 acres. These will be evenly scattered throughout the unit.

5.2.30 - Landing/road top soil protection (2/15)

Top soil on landings and new roads must be removed, stockpiled and saved. Upon completion of the timber sale, soil must be evenly distributed back over the area for revegetation.

5.2.32 - Decking/landing restoration (9/13)

All decking and landing areas must have the surface area restored to a condition equal to or better than before. This is to ensure the proper regeneration of the stand. Wood debris, chips and "cookies" from trimmings must be removed or scattered away from landing and loading areas and may not be windrowed on the edge.

5.4 - Soil Protection

5.4.1 - Rutting restriction, general (7/16)

Operations are to cease immediately if equipment and weather conditions result in rutting of roads and/or skid trails which is 12 inches or greater in depth and 50 feet in length. The Unit Manager or his/her representative may restrict hauling and/or skidding if ruts exceed the specified depth. With the Unit Manager or his/her representative's approval, the Purchaser may return to the area when the risk of rutting has decreased.



**TIMBER SALE MAP**

This information provided by authority of Part 525, 1994 PA 451, as amended.

Sale Number	Year
71-016	22

Forest Management Unit Roscommon Management Unit	County Roscommon County	Mapped By Lewicki	Date 6/16/2022	Page 1	of 2
Township 24N	Range 01W	Section(s) and Subdivision(s) S.8 SWNE;E1/2SW;N1/2SE;SWSE	Scale 1:15,840		

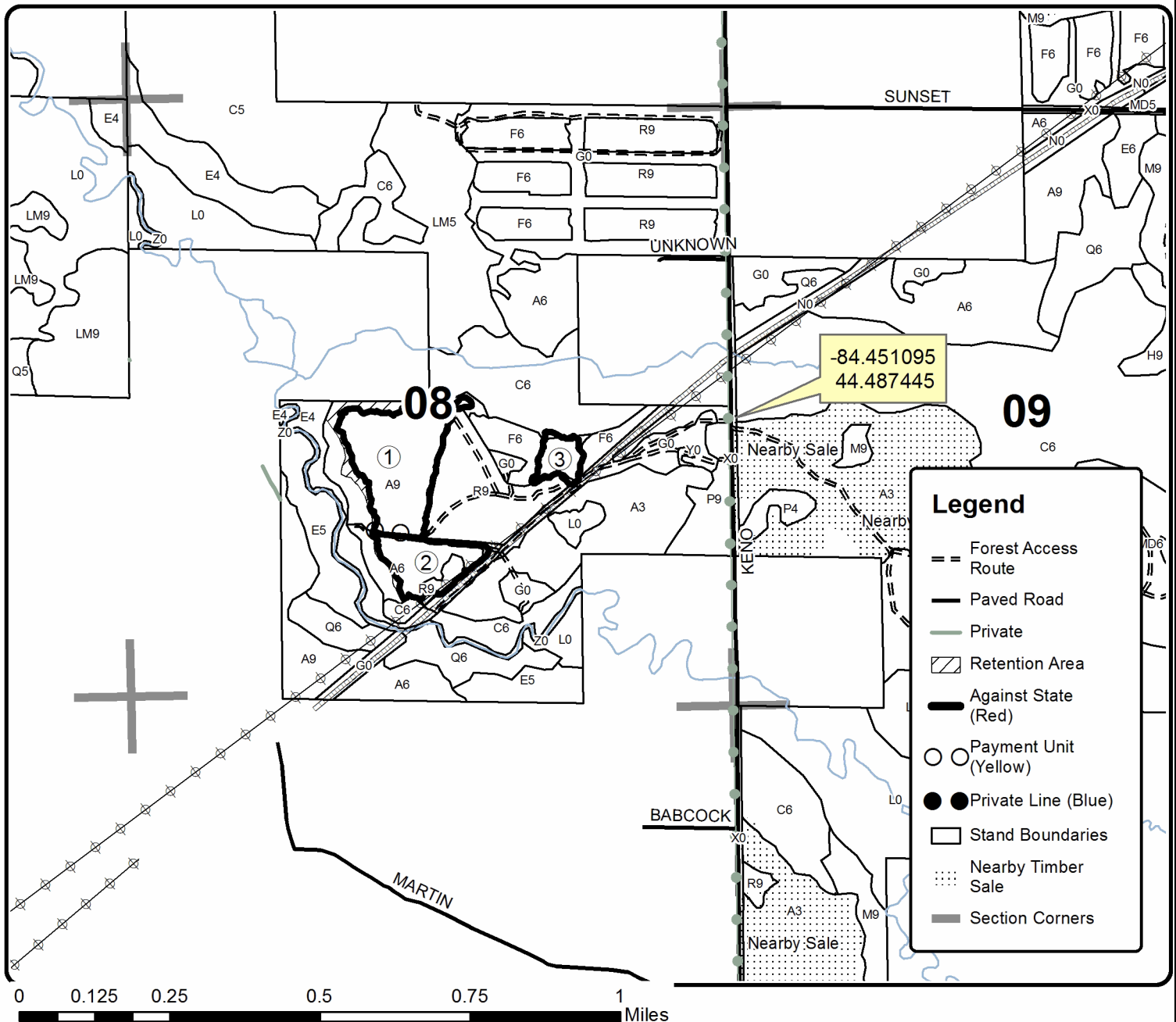
**Cover Type**

A = Aspen	H = Hemlock	N = Marsh	U = Upland Brush
B = Paper Birch	J = Jack Pine	O = Oak	UM = Upland Mixed
C = Cedar	L = Lowland Brush	P = Lowland Poplar	V = Bog or Marsh
D = Treed Bog	LM = Lowland Mixed	Q = Mixed Swamp Conifer	W = White Pine
E = Swamp Hdwoods	M = Mpl, Bch, Brch	R = Red Pine	X = Non Stocked
F = Spruce Fir	MC = Mixed Conifer	S = Black Spruce	Z = Water
G = Grass	MD = Mixed Deciduous	T = Tamarack	

**Density**

0 = Non Stocked	5 = Pole Timber Medium
1 = Seedling Sapling Poor	6 = Pole Timber Well
2 = Seedling Sapling Medium	7 = Saw Timber Poor
3 = Seedling Sapling Well	8 = Saw Timber Medium
4 = Pole Timber Poor	9 = Saw Timber Well

PU	Acres	PU	Acres
1	17.5	4	7.6
2	6.4	5	18.4
3	3.1	6	30.5

**South Branch Aspen****Compartment 65****84.9 Acres**

**TIMBER SALE MAP**

This information provided by authority of Part 525, 1994 PA 451, as amended.

Sale Number	Year
71-016	22

Forest Management Unit Roscommon Management Unit	County Roscommon County	Mapped By Lewicki	Date 6/16/2022	Page 2	of 2
Township 24N	Range 01W	Section(s) and Subdivision(s) S.9-SENE;SESE S.10-S1/2NW;SW;NWSE S.16-NENE	Scale 1:15,840		

Cover Type				Density	
A = Aspen	H = Hemlock	N = Marsh	U = Upland Brush	0 = Non Stocked	5 = Pole Timber Medium
B = Paper Birch	J = Jack Pine	O = Oak	UM = Upland Mixed	1 = Seedling Sapling Poor	6 = Pole Timber Well
C = Cedar	L = Lowland Brush	P = Lowland Poplar	V = Bog or Marsh	2 = Seedling Sapling Medium	7 = Saw Timber Poor
D = Treed Bog	LM = Lowland Mixed	Q = Mixed Swamp Conifer	W = White Pine	3 = Seedling Sapling Well	8 = Saw Timber Medium
E = Swamp Hdwoods	M = Mpl, Bch, Brch	R = Red Pine	X = Non Stocked	4 = Pole Timber Poor	9 = Saw Timber Well
F = Spruce Fir	MC = Mixed Conifer	S = Black Spruce	Z = Water		
G = Grass	MD = Mixed Deciduous	T = Tamarack			

PU	Acres	PU	Acres
1	17.5	4	7.6
2	6.4	5	18.4
3	3.1	6	30.5

## South Branch Aspen

### Compartment 65

84.9 Acres

