



**DEPARTMENT OF NATURAL RESOURCES  
STATE OF MICHIGAN  
TIMBER SALE PROSPECTUS #7057**

**SCHEDULED SALE DATE AND TIME: 4:00 p.m. (local time) on October 4, 2022.**

**LOCATION: TRAVERSE CITY MGMT UNIT, 2122 M 37 SOUTH, TRAVERSE CITY, MI 49685.**

**CONTACT NAME:** David Fisher

**PHONE NUMBER:** (231) 745-4651

**PROSPECTUS NOTE:** Effective immediately: all bid openings for the Traverse City Management Unit (Kalkaska Field Office and Traverse City Field Office) will be held at the Traverse City Field Office regardless of sale location within the unit. All payments will now be handled through the Traverse City Field Office. The Kalkaska Field Office will no longer accept payments or hard paper copies of timber sale bids. Payments for all contracts, use permits, bonds, etc. should be sent to the Traverse City Field Office.

The bidder is advised to inspect the sale area and review the location, estimated volumes, operating costs and contract terms of proposed sales. Please be aware that some landowners may request 60 days or more notice for access across their land.

Notice is hereby given that bids will be received by the Unit Manager, TRAVERSE CITY MANAGEMENT UNIT, for certain timber on the following described lands:

South Ridge Oak (61-612-22) / T25N, R05W, SEC. 4, NENE.

T26N, R05W, SEC. 33, SESW, SE.

T26N, R05W, SEC. 34, SWSW.

Kalkaska County, Advertised Price \$10,748.25, 81.5 Acres, Hardwood, Red Oak.

SALE NOTE: All units of volume listed for this sale were estimated using the Inventory Manager computer program and the new Michigan taper model.

- See sale spec 7.10.1 for information on non-certified timber.
- See sale specs 2.2.2 and 2.2.3 for information on chipping and stump height requirements.
- See sale spec 5.2.3.4 for information on oak wilt requirements.

Access may be through other public land.

## TIMBER SALE INFORMATION

### South Ridge Oak (61-612-22)

T25N, R05W, SEC. 4; T26N, R05W, SEC. 33; T26N, R05W, SEC. 34.  
Kalkaska County (Advertised Price \$10,748.25)

SALE NOTE: All units of volume listed for this sale were estimated using the Inventory Manager computer program and the new Michigan taper model.

- See sale spec 7.10.1 for information on non-certified timber.
- See sale specs 2.2.2 and 2.2.3 for information on chipping and stump height requirements.
- See sale spec 5.2.3.4 for information on oak wilt requirements.

Access may be through other public land.

A timber sale contract for this lump sum, sealed bid timber sale will be awarded to the responsible bidder offering the highest sealed bid price. All units of volume listed below were estimated using the Inventory Manager computer program and the new Michigan taper model. Bids must be at or above the following advertised price for each product and species:

<u>PRODUCTS &amp; SPECIES</u>	<u>ESTIMATED UNITS*</u>	<u>ADVERTISED PRICE</u>
Sawtimber		
Misc. Species 1	10.8 MBF	\$ 17.00 / MBF
Mixed Oak	77.4 MBF	\$ 26.00 / MBF
Red Oak	57.5 MBF	\$ 51.00 / MBF
Red Pine	4.4 MBF	\$ 41.00 / MBF
White Oak	21.9 MBF	\$ 25.00 / MBF
Pulpwood		
Jack Pine	7 Cords	\$ 6.90 / Cord
Misc. Species 1	10 Cords	\$ 3.25 / Cord
Mixed Hardwood	82 Cords	\$ 7.55 / Cord
Mixed Oak	473 Cords	\$ 8.15 / Cord
Red Pine	20 Cords	\$ 16.85 / Cord

\* The total volume is statistically estimated within plus (+) or minus (-) 12.80 percent. There are an estimated 923 cords on this timber sale, plus or minus 118 cords at the 95% confidence level. The estimated units are final and not subject to adjustment. Prospective bidders are urged to examine this timber and to make their own estimates of quantity and quality.

### **BOND AND PAYMENT SCHEDULE:**

1. A bond in the amount of \$537.41 to insure faithful performance of the conditions of the contract will be deposited by the successful bidder within 21 days of the sale award.
2. Cutting in any sale or unit without the required advance payment would be considered a trespass.
3. Total payment must be paid in advance or according to the following schedule:
  - (a) Ten percent (10%) of the sale value must be paid within 21 days of the sale award.
  - (b) The 10% down payment will be credited towards the first unit cut.
  - (c) Payment for each of the following units must be made before cutting begins in that unit:

PAYMENT UNIT NUMBER	PERCENT OF TOTAL SALE VALUE
01	66.0%
02	34.0%
4. If no cutting takes place, the 10% down payment will not be refunded.
5. Operations on the contract issued will terminate on 12/31/2025.

### **SALE STATISTICS**

Volumes were calculated in cubic feet using the Michigan taper model. Cubic foot volume includes all wood inside bark for the product indicated. For display purposes, cubic feet were converted to cords and MBF using a simple conversion factor, e.g. 79 cubic feet per cord and 185 cubic feet per MBF. The cubic foot volumes are precise; the cords and MBF volumes are not. Cubic foot volume cannot be directly converted to cords or boards with precision.

## SALE VOLUMES

The total estimated sale volume may not equal the sum of the species/products due to the nature of statistical calculations associated with double sampling methodology.

VOLUME			STATISTICAL RANGE IN CORDS	
TOTAL CUBIC FEET	TOTAL CORDS	PERCENT ERROR	MINIMUM	MAXIMUM
72,946	923	12.80%	805	1,042

## VDU VOLUMES

A VDU is a Volume Determination Unit. Volumes and their associated statistics are calculated at the VDU level and summarized to the sale level. There is often a one to one relationship between a VDU and a Payment Unit, but not always, depending on the cruise design. Refer to the VDU TO PAYMENT UNIT table.

	VOLUME			RANGE IN CORDS	
VDU	TOTAL CUBIC FEET	TOTAL CORDS	PERCENT ERROR	MINIMUM	MAXIMUM
70	44,845	568	19.41%	457	678
86	28,101	356	12.04%	313	399
<b>TOTAL:</b>	<b>72,946</b>	<b>923</b>		<b>770</b>	<b>1,076</b>

## VDU TO PAYMENT UNIT

When a VDU is associated with more than one Payment Unit (PU), the VDU volumes are assigned to the PU based on acres of the VDU within the PU.

VDU	VDU ACRES	PU	PU ACRES
70	26.2	1	26.2
86	55.3	1	2.0
		2	53.3
<b>TOTAL:</b>	<b>81.5</b>		<b>81.5</b>

**DESCRIPTION OF TIMBER BY PU (PU)**

PU	MARKET GROUP	PRODUCT	QUANTITY	UNIT	ACRES	ADVERTISE PRICE
1	Misc. Species 1	Sawtimber	0.4	MBF	28.2	\$7,093.95
	Mixed Oak		11.4	MBF		
	<i>Bl/R/Hybrid Oak</i>		6.6	<i>MBF</i>		
	<i>Northern Pin Oak</i>		4.8	<i>MBF</i>		
	Red Oak		57.5	MBF		
	Red Pine	Pulpwood	0.2	MBF		
	White Oak		12.3	MBF		
	Jack Pine		5	Cords		
	Mixed Hardwood		82	Cords		
	<i>Black Cherry</i>		7	<i>Cords</i>		
	<i>Red Maple</i>		75	<i>Cords</i>		
	Mixed Oak		340	Cords		
	<i>Bl/R/Hybrid Oak</i>		6	<i>Cords</i>		
	<i>Northern Pin Oak</i>		12	<i>Cords</i>		
	<i>Red Oak</i>		288	<i>Cords</i>		
	<i>White Oak</i>		34	<i>Cords</i>		
	Red Pine		7	Cords		
2	Misc. Species 1	Sawtimber	10.4	MBF	53.3	\$3,654.30
	Mixed Oak		66.0	MBF		
	<i>Bl/R/Hybrid Oak</i>		0.3	<i>MBF</i>		
	<i>Northern Pin Oak</i>		65.7	<i>MBF</i>		
	Red Pine		4.2	MBF		
	White Oak	Pulpwood	9.6	MBF		
	Jack Pine		2	Cords		
	Misc. Species 1		10	Cords		
	Mixed Oak		133	Cords		
	<i>Bl/R/Hybrid Oak</i>		16	<i>Cords</i>		
	<i>Northern Pin Oak</i>		97	<i>Cords</i>		
	<i>White Oak</i>		20	<i>Cords</i>		
	Red Pine		13	Cords		
TOTAL:			172.0	MBF		
TOTAL:			592	Cords		

## **Sale Specific Conditions & Requirements**

**Sale Name: South Ridge Oak**

**Sale Number: 61-612-22 Seq#: 2**

### **1 - Sale Area**

#### **1.2 - Boundaries**

##### **1.2.1 - Painted boundaries (9/19)**

The sale boundary and Payment Unit boundaries are marked and identified by red paint. Exterior sale boundary lines against state are marked with red paint. The Interior Payment Unit boundary is designated by Portage Creek Road. The painted boundary line trees are not Included Timber and are to be protected.

### **2 - Timber Specifications**

#### **2.1 - Included Timber**

##### **2.1.2 - Clearcut unit(s) w/o unmerchantable trees (8/11)**

Within Payment Unit(s) 1, cut all trees which meet minimum piece specifications in 2.2 Utilization, except do not cut white pine or trees marked with green paint. There is a pocket of 15-year-old aspen (~1 acre) in the southern part of the Payment Unit. Do not cut or damage this pocket of regeneration. Contact sale administrator with any questions.

##### **2.1.5 - Overstory removal unit(s) (8/11)**

Within Payment Unit(s) 2, all trees with a DBH of greater than 6 inches, which meet minimum piece specifications in 2.2 Utilization, are designated for cutting, except do not cut white pine or trees marked with green paint.

##### **2.1.11 - Description of timber note (2/04)**

Note that Misc. Species 1 = dead oak.

#### **2.2 - Utilization**

##### **2.2.2 - Chipping required (2/18)**

Payment Units 1 and 2 must be chip harvested to meet National Guard requirements. However, the chipping requirement could be waived with military approval if chip markets are depressed. The Purchaser has the option to produce sawlogs or pulpwood bolts, but the remaining portion of the trees must be chipped and hauled. Products may be produced as roundwood and forwarded to decking areas in final product length, but the tops must be left intact and skidded to the landing for chipping to minimize the amount of residual slash or tops must be ran over and broken down as to not interfere with National Guard training. The requirement to retain approximately 1/6 to 1/3 of tree tops and limbs less than four inches in diameter does not apply (G. C. & R. 2.2). This is because this sale is not on certified land.

##### **2.2.3 - Stump heights (4/07)**

Stump heights within the Sale Area shall not exceed 6 inches for all trees. This is to facilitate military requirements.

### **3 - Payments**

#### **3.4 - Damaged Timber**

##### **3.4.1 - Damaged timber (7/16)**

General Condition and Requirement 3.4 Damaged Timber, defines liquidated damages for undesignated live merchantable trees which are cut or injured. In addition, extreme care should be taken to avoid damage to tree seedlings and saplings.

Within the Sale Area, if more than 20% of the tree seedlings or saplings (1/4" to 4.5" DBH) within a specified portion of the Sale Area are damaged, liquidated damages will be assessed at \$300 per acre for all acreage within that specified portion of the Sale Area that was damaged.

No damage is acceptable to undesignated live merchantable trees. Within the Sale Area, if more than 10% of trees (> 4.5" DBH) within a specified area of the sale are damaged, liquidated damages will be assessed for all trees damaged. Rates will be in accordance with General Condition and Requirement 3.4 Damaged Timber.

### **4 - Transportation**

#### **4.1 - Construction**

#### 4.1.6 - Road construction (1/09)

Improvements of existing roads shall be done in such a way as to minimize the environmental and visual impacts. Merchantable trees shall be cut and utilized unless otherwise directed. Non-merchantable trees shall be severed and laid flat on the ground. Slash shall be scattered, and not left in windrows and kept a minimum of 10 feet back from the road edge. Stumps shall be set upright, not left on edge, and be moved at least 10 feet away from the road edge. Disturbed soil shall be feathered into the woods and not left in berms or windrows.

#### 4.1.12 - No new roads (1/12)

No new roads will be permitted in any Payment Unit. All operations are limited to existing roads. Skid trails only will be allowed.

## 5 - Operations

### 5.1 - Notification

#### 5.1.5 - National Guard notification (2/15)

This sale is upon lands utilized for training by the Michigan National Guard - Camp Grayling. A minimum of five (5) business days prior to opening this sale, the producer must request that the sale administrator contact the military for information regarding training plans that may impact sale operations.

### 5.2 - Conduct of Operations

#### 5.2.2 - Hazard Trees/Snags

##### 5.2.2.1 - Den trees (10/16)

Obvious hollow and/or den trees shall be protected and left standing unless they are a safety hazard.

#### 5.2.3 - Operating Restrictions

##### 5.2.3.4 - Oak wilt restriction, no exceptions (1/18)

Within Payment Unit 1 and 2, cutting, skidding, hauling within the sale and brushing of access roads to the sale are not permitted during the period of April 15 to July 15. No exceptions will be granted. This is necessary to reduce the spread of oak wilt.

##### 5.2.3.7 - National Guard training restriction (1/09)

Operations on this contract may not be allowed during National Guard training operations. Typically, the restricted period is from May 1 to October 31. The contractor must check with the Unit Manager who will coordinate the cutting schedule with the Military. All harvest equipment and timber products must be removed from the Sale Area during the period of May 1 to October 31.

#### 5.2.32 - Decking/landing restoration (9/13)

All decking and landing areas must have the surface area restored to a condition equal to or better than before. This is to ensure the proper regeneration of the stand. Wood debris, chips, and "cookies" from trimmings must be removed or scattered away from landing and loading areas and may not be windrowed on the edge.

### 5.4 - Soil Protection

#### 5.4.1 - Rutting restriction, general (7/16)

The Unit Manager or his/her representative may restrict hauling and/or skidding if ruts exceed the specified depth. With the Unit Manager or his/her representative's approval, the Purchaser may return to the area when the risk of rutting has decreased.

#### 5.4.4 - Slope protection (9/19)

Skid trails and roads on slopes shall be water barred with slash and stumps as soon as use is complete to prevent erosion.

### 5.8 - Protection of Endangered Species

#### 5.8.1 - Kirtland's warbler (1) (10/12)

This sale is adjacent to a young jack pine stand which may be used by the endangered Kirtland's Warbler. The Department reserves the right to temporarily restrict all harvesting operations in a buffer zone of up to 500 feet if it is determined that Warbler territory has been established in the adjacent stand. The restricted period, if put into effect, would apply from May 1

to August 15.

#### 5.8.5 - Protection of raptor nests (3/13)

All trees with raptor nests will be protected if found during harvesting operations. Notification will be made to the Unit Manager or his/her representative who will notify the Wildlife Biologist so an on-site evaluation and recommendation can be made, if necessary.

### 6 - Safety and Fire Prevention

#### 6.2 - Signing

##### 6.2.1 - Road posting (10/20)

The Purchaser is responsible for posting and maintaining caution signs on Portage Creek Road prior to beginning operations. The road must be posted at appropriate distances from the Sale Area to warn of logging activity and truck traffic. Signs must be removed when harvest operations are suspended or completed. The Purchaser will provide these signs.

SKIP

#### 6.4 - Unexploded ordinance (7/15)

Be aware that the sale area could contain UXO (unexploded ordinances). Do not touch, or drive over any metal objects. If any objects are found, please flag the area and notify the Unit Manager or his/her representative, so that they can make arrangements with the Military.

### 7 - Other Conditions

#### 7.10 - Certified Timber

##### 7.10.1 - Non-certified timber (2/16)

The area encompassed by this timber sale is not certified to the standards of the Forest Stewardship Council (FSC) or the Sustainable Forestry Initiative (SFI). Forest products from this sale may not be delivered to the mill as "FSC and / or SFI certified". The lands within this sale are managed for military training.

**TIMBER SALE MAP**

This information provided by authority of Part 525, 1994 PA 451, as amended.

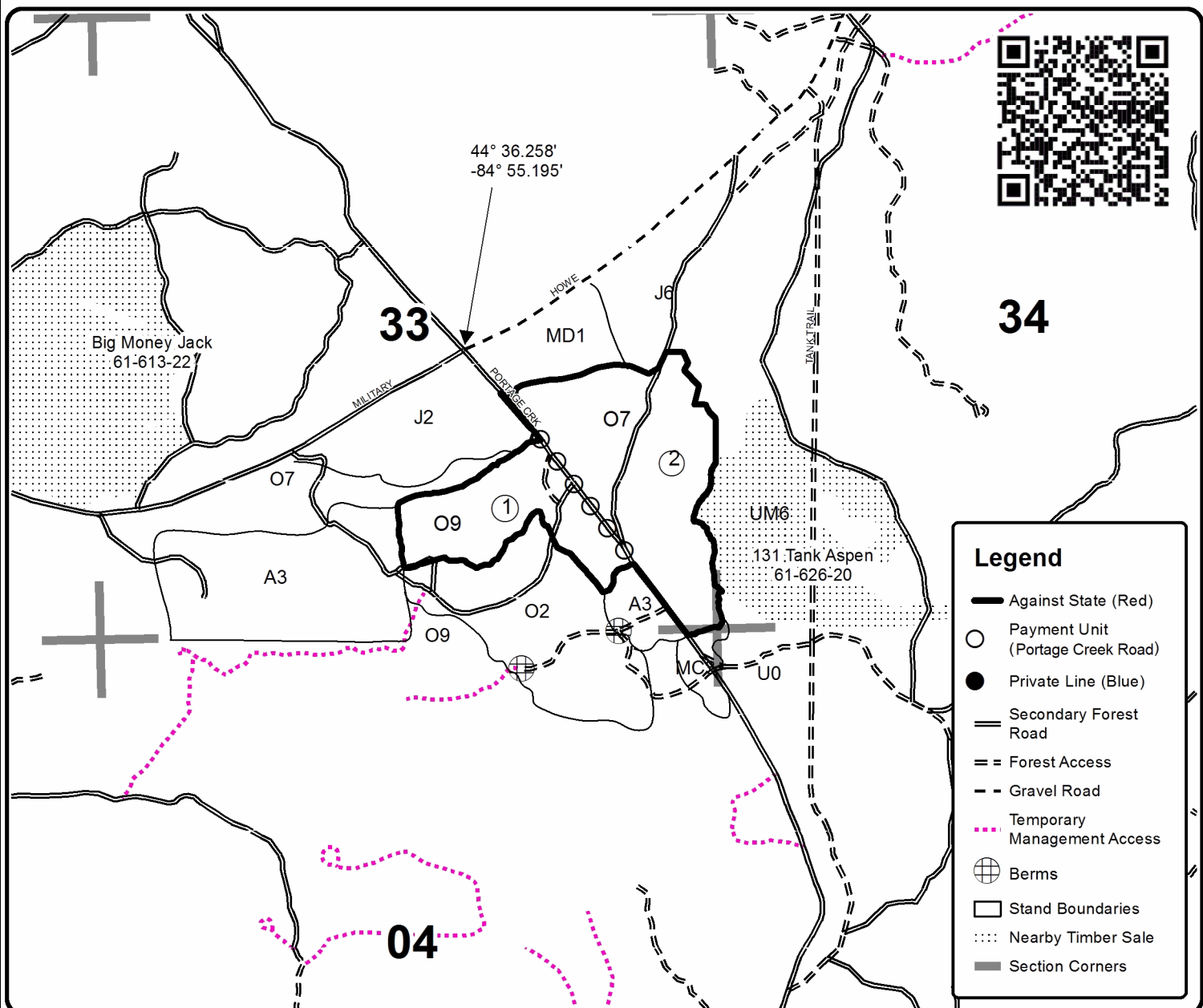
Sale Number	Year
61-612	22

Forest Management Unit	County	Mapped By	Date	Page	of
Traverse City	Kalkaska	Crigger	02/23/2022	1	1
Township	Range	Section(s) and Subdivision(s)	Scale		
26N	05W	SEC: SE1/4	1:15,840		

Cover Type				Density	
A = Aspen	H = Hemlock	N = Marsh	U = Upland Brush	0 = Non Stocked	5 = Pole Timber Medium
B = Paper Birch	J = Jack Pine	O = Oak	UM = Upland Mixed	1 = Seedling Sapling Poor	6 = Pole Timber Well
C = Cedar	L = Lowland Brush	P = Lowland Poplar	V = Bog or Marsh	2 = Seedling Sapling Medium	7 = Saw Timber Poor
D = Treed Bog	LM = Lowland Mixed	Q = Mixed Swamp Conifer	W = White Pine	3 = Seedling Sapling Well	8 = Saw Timber Medium
E = Swamp Hdwoods	M = Mpl, Bch, Brch	R = Red Pine	X = Non Stocked	4 = Pole Timber Poor	9 = Saw Timber Well
F = Spruce Fir	MC = Mixed Conifer	S = Black Spruce	Z = Water		
G = Grass	MD = Mixed Deciduous	T = Tamarack			

**PU Acres**

1	28.2
2	53.3

**South Ridge Oak**  
**Compartment 132**  
**81.5 Acres**

0 0.125 0.25 0.5 0.75 1 Miles