



**DEPARTMENT OF NATURAL RESOURCES
STATE OF MICHIGAN
TIMBER SALE PROSPECTUS #7126**

SCHEDULED SALE DATE AND TIME: **3:00 p.m. (local time) on October 20, 2022.**

LOCATION: **ESCANABA MGMT UNIT, 6833 HWY'S 2, 41 & M-35, GLADSTONE, MI 49837.**

CONTACT NAME: Eric Thompson

PHONE NUMBER: (906) 789-8231

PROSPECTUS NOTE: The bidder is advised to inspect the sale area and review the location, estimated volumes, operating costs and contract terms of proposed sales. Please be aware that some landowners may request 60 days or more notice for access across their land.

Notice is hereby given that bids will be received by the Unit Manager, ESCANABA MANAGEMENT UNIT, for certain timber on the following described lands:

Pringle Hardwoods (33-031-22) / T33N, R26W, SEC. 8 , SESE.

T33N, R26W, SEC. 9 , NENW,S1/2NW,W1/2SW.

Menominee County, Advertised Price \$10,118.20, 54.5 Acres, Hardwood, Spruce/Fir/Tamarack.

SALE NOTE: Access may be through other public land.

TIMBER SALE INFORMATION

Pringle Hardwoods (33-031-22)
 T33N, R26W, SEC. 8; T33N, R26W, SEC. 9.
 Menominee County (Advertised Price \$10,118.20)

SALE NOTE: Access may be through other public land.

A timber sale contract for this lump sum, sealed bid timber sale will be awarded to the responsible bidder offering the highest sealed bid price. All units of volume listed below were estimated using the Inventory Manager computer program and the new Michigan taper model. Bids must be at or above the following advertised price for each product and species:

<u>PRODUCTS & SPECIES</u>	<u>ESTIMATED UNITS*</u>	<u>ADVERTISED PRICE</u>
Sawtimber		
Basswood	15.6 MBF	\$ 27.00 / MBF
Beech	1.8 MBF	\$ 26.00 / MBF
Paper Birch	5.7 MBF	\$ 48.00 / MBF
Red Maple	9.3 MBF	\$ 123.00 / MBF
Sugar Maple	26.2 MBF	\$ 130.00 / MBF
Pulpwood		
Balsam Fir	64 Cords	\$ 9.80 / Cord
Black Spruce	2 Cords	\$ 10.40 / Cord
Mixed Hardwood	298 Cords	\$ 13.35 / Cord
N. White Cedar	26 Cords	\$ 5.85 / Cord
Quaking Aspen	3 Cords	\$ 16.10 / Cord

* The total volume is statistically estimated within plus (+) or minus (-) 14.57 percent. There are an estimated 545 cords on this timber sale, plus or minus 79 cords at the 95% confidence level. The estimated units are final and not subject to adjustment. Prospective bidders are urged to examine this timber and to make their own estimates of quantity and quality.

BOND AND PAYMENT SCHEDULE:

1. A bond in the amount of \$505.91 to insure faithful performance of the conditions of the contract will be deposited by the successful bidder within 21 days of the sale award.
2. Cutting in any sale or unit without the required advance payment would be considered a trespass.
3. Total payment must be paid in advance or according to the following schedule :
 - (a) Ten percent (10%) of the sale value must be paid within 21 days of the sale award.
 - (b) The 10% down payment will be credited towards the first unit cut.
 - (c) Payment for each of the following units must be made before cutting begins in that unit:

PAYMENT UNIT NUMBER	PERCENT OF TOTAL SALE VALUE
01	52.1%
02	42.4%
03	5.5%
4. If no cutting takes place, the 10% down payment will not be refunded.
5. Operations on the contract issued will terminate on 09/30/2025.

SALE STATISTICS

Volumes were calculated in cubic feet using the Michigan taper model. Cubic foot volume includes all wood inside bark for the product indicated. For display purposes, cubic feet were converted to cords and MBF using a simple conversion factor, e.g. 79 cubic feet per cord and 185 cubic feet per MBF. The cubic foot volumes are precise; the cords and MBF volumes are not. Cubic foot volume cannot be directly converted to cords or boards with precision.

SALE VOLUMES

The total estimated sale volume may not equal the sum of the species/products due to the nature of statistical calculations associated with double sampling methodology.

VOLUME		STATISTICAL RANGE IN CORDS		
TOTAL CUBIC FEET	TOTAL CORDS	PERCENT ERROR	MINIMUM	MAXIMUM
43,027	545	14.57%	465	624

VDU VOLUMES

A VDU is a Volume Determination Unit. Volumes and their associated statistics are calculated at the VDU level and summarized to the sale level. There is often a one to one relationship between a VDU and a Payment Unit, but not always, depending on the cruise design. Refer to the VDU TO PAYMENT UNIT table.

VDU	VOLUME		PERCENT ERROR	RANGE IN CORDS	
	TOTAL CUBIC FEET	TOTAL CORDS		MINIMUM	MAXIMUM
7	40,216	509	16.28%	426	592
11	2,812	36	38.19%	22	49
TOTAL:	43,027	545		448	641

VDU TO PAYMENT UNIT

When a VDU is associated with more than one Payment Unit (PU), the VDU volumes are assigned to the PU based on acres of the VDU within the PU.

VDU	VDU ACRES	PU	PU ACRES
7	51.5	1	28.4
		2	23.1
11	3.0	3	3.0
TOTAL:	54.5		54.5

DESCRIPTION OF TIMBER BY PU (PU)

PU	MARKET GROUP	PRODUCT	QUANTITY	UNIT	ACRES	ADVERTISE PRICE				
1	Basswood	Sawtimber	8.3	MBF	28.4	\$5,275.80				
	Beech		1.0	MBF						
	Paper Birch		3.1	MBF						
	Red Maple		4.7	MBF						
	Sugar Maple		14.0	MBF						
	Balsam Fir		Pulpwood	25			Cords			
	Black Spruce	1		Cords						
	Mixed Hardwood	158		Cords						
	<i>Balsam Poplar</i>	2		<i>Cords</i>						
	<i>Basswood</i>	22		<i>Cords</i>						
	<i>Beech</i>	4		<i>Cords</i>						
	<i>Black Cherry</i>	2		<i>Cords</i>						
	<i>Green Ash</i>	8		<i>Cords</i>						
	<i>Ironwood</i>	1		<i>Cords</i>						
	<i>Paper Birch</i>	9		<i>Cords</i>						
	<i>Red Maple</i>	17		<i>Cords</i>						
	<i>Sugar Maple</i>	45		<i>Cords</i>						
	<i>White Ash</i>	48		<i>Cords</i>						
	N. White Cedar	14		Cords						
	Quaking Aspen	2		Cords						
	2	Basswood	Sawtimber	6.7			MBF	23.1	\$4,286.50	
Beech		0.8		MBF						
Paper Birch		2.6		MBF						
Red Maple		3.9		MBF						
Sugar Maple		11.3		MBF						
Balsam Fir		Pulpwood		21	Cords					
Black Spruce			1	Cords						
Mixed Hardwood			128	Cords						
<i>Balsam Poplar</i>			2	<i>Cords</i>						
<i>Basswood</i>			18	<i>Cords</i>						
<i>Beech</i>			3	<i>Cords</i>						
<i>Black Cherry</i>			2	<i>Cords</i>						
<i>Green Ash</i>			6	<i>Cords</i>						
<i>Paper Birch</i>			7	<i>Cords</i>						
<i>Red Maple</i>			14	<i>Cords</i>						
<i>Sugar Maple</i>			37	<i>Cords</i>						
<i>White Ash</i>			39	<i>Cords</i>						
N. White Cedar			12	Cords						
Quaking Aspen			1	Cords						
3			Basswood	Sawtimber	0.6	MBF	3.0			\$555.90
		Red Maple	0.7		MBF					
	Sugar Maple	0.9	MBF							
	Balsam Fir	Pulpwood	18	Cords						
	Mixed Hardwood		12	Cords						
	<i>Basswood</i>		1	<i>Cords</i>						
	<i>Ironwood</i>		2	<i>Cords</i>						
	<i>Red Maple</i>		6	<i>Cords</i>						
	<i>Sugar Maple</i>		3	<i>Cords</i>						
	TOTAL:			58.6	MBF					
	TOTAL:			393	Cords					

Sale Specific Conditions & Requirements

Sale Name: Pringle Hardwoods

Sale Number: 33-031-22 Seq#: 1

1 - Sale Area

1.2 - Boundaries

1.2.1 - Painted boundaries (9/19)

The sale boundary and Payment Unit boundaries are marked and identified by blue, red and yellow paint. Exterior sale boundary lines against private property are marked with blue paint. Exterior sale boundary lines against state are marked with red paint. Interior Payment Unit boundaries are marked with yellow paint. The painted boundary line trees are not Included Timber and are to be protected unless marked with orange paint. Yellow painted trees designating an interior Payment Unit boundary are only to be cut when all surrounding Payment Units have been paid for.

2 - Timber Specifications

2.1 - Included Timber

2.1.3 - Cut tree marked unit(s) (12/08)

Within Payment Unit(s) 1 - 3, all trees are designated for cutting when marked with orange paint above and below stump height, regardless of merchantability.

In addition, within Payment Units 1 and 2, cut all balsam fir and ironwood greater than three (3) inches at DBH.

In addition, within Payment Unit 3, cut all balsam fir greater than three (3) inches at DBH.

2.1.9 - Harvest exception (12/08)

Do not cut any cedar trees that are not marked with orange paint, other than those that are necessary to remove in order to operate within the sale area. Every effort must be made to preserve the existing cedar and to leave an intact stand upon sale completion. All cut cedar without orange paint shall be piled separately by products and scaled in the woods unless other scaling arrangements are agreed to by the Unit Manager or his/her representative. Stumpage price for unmarked cedar shall be \$45.00 per cord.

2.2 - Utilization

2.2.4 - Skidding length (2/14)

Skidding of unlimbed tops or lengths over 17 feet is not permissible..

3 - Payments

3.3 - Pre-measured Sales

3.3.4 - Dividing payment units (7/14)

Payment Unit(s) \$18,000 in value or greater may be divided at the request of the Purchaser and upon approval of the Unit Manager. Dividing Payment Units is a contract modification which requires a Timber Sale Contract Amendment. There will be only one division per Payment Unit.

4 - Transportation

4.1 - Construction

4.1.8 - Road work (1) (8/07)

The following road work is required: a minimum of 24 cubic yards of gravel must be hauled and spread by the Purchaser. The gravel will be placed on the approaches to the culvert on Bailey Creek. All roadwork must be completed prior to any hauling taking place. The gravel is available from a state pit about 14 miles away.

4.2 - Maintenance

4.2.1 - Hauling restriction (12/08)

Hauling may be restricted on forest roads by the Unit Manager or his/her representative. The restriction may occur during

spring breakup or during other wet weather conditions.

4.2.4 - Grading (10/16)

For completion of the sale, state forest roads must be graded. In general, this will require a road grader or bull dozer to shape up the roads after forest products have been hauled off site. This includes cleaning of drainage areas, grading, crowning and filling with gravel, if necessary. The grading equipment to be used must be approved by the Unit Manager or his/her representative.

5 - Operations

5.2 - Conduct of Operations

5.2.3 - Operating Restrictions

5.2.3.3 - Bark slippage restriction (3/09)

Within Payment Unit(s) 1 - 3, unless changed by written agreement, cutting and skidding are not permitted during the period of April 15 to July 15. This restriction is because of bark slippage.

6 - Safety and Fire Prevention

6.2 - Signing

6.2.1 - Road posting (10/20)

The Purchaser is responsible for posting and maintaining caution signs on Newlin Lane prior to beginning operations. The road must be posted at appropriate distances from the sale area to warn of logging activity and truck traffic. Signs must be removed when harvest operations are suspended or completed. The Purchaser will provide these signs. Newlin Lane is a county road, that extends from the Million Dollar Road north to state land.

7 - Other Conditions

7.5 - Loss

7.5.1 - Deteriorating timber (7/09)

The sale area has received damage from the emerald ash borer. The Purchaser should harvest the wood as soon as possible. The Department of Natural Resources is held free of responsibility of any further damage or deterioration due to delay in harvesting.



TIMBER SALE MAP

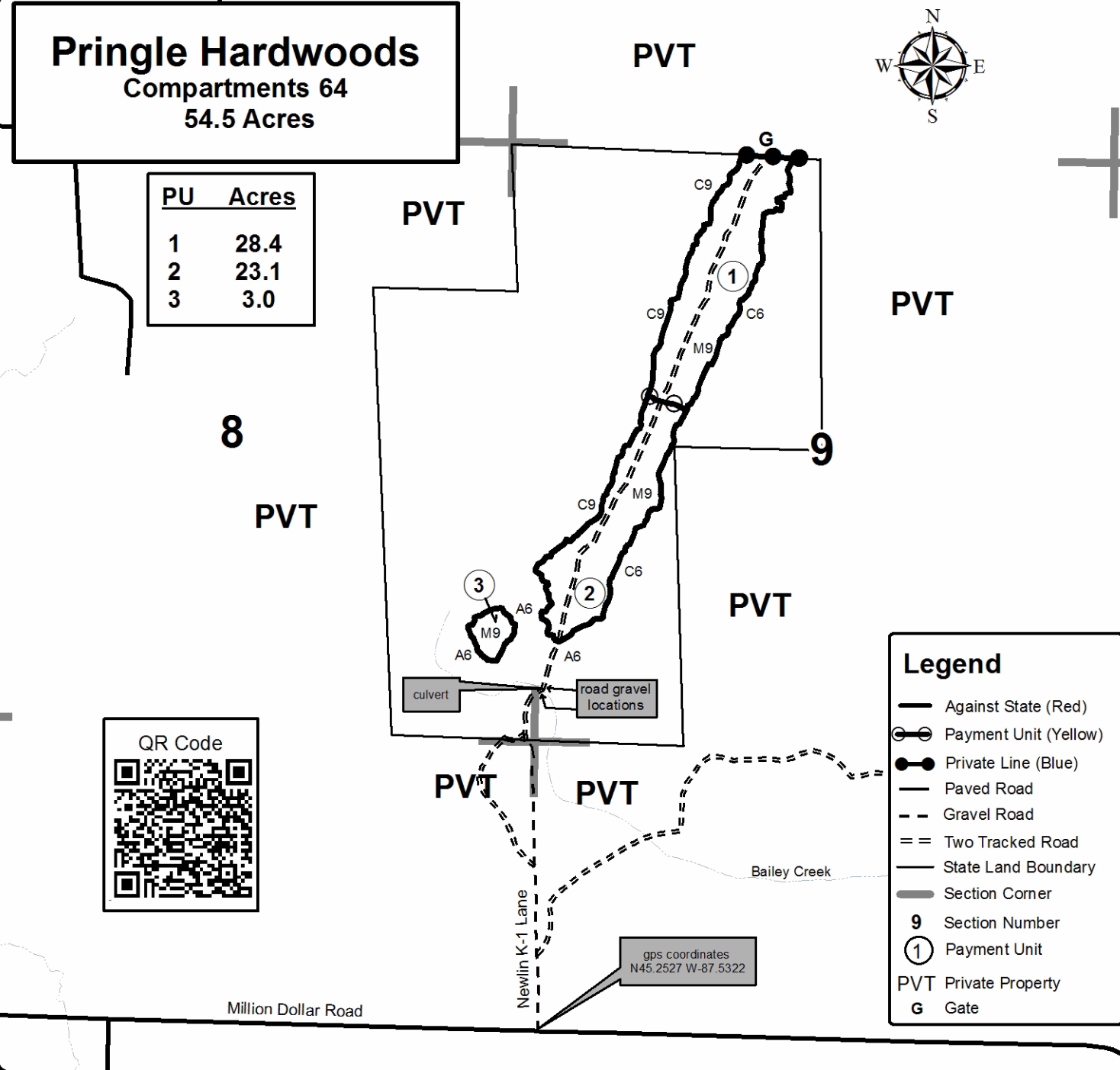
This information provided by authority of Part 525, 1994 PA 451, as amended.

Forest Management Unit Escanaba Management Unit		County Menominee County	Mapped By Beaudo	Date 8/17/2022	Page 1	of 1
Township 33N	Range 26W	Section(s) and Subdivision(s) Sec 8 - SESE; Sec 9 - NENW, S1/2NW, W1/2SW.		Scale 1:15,840		

Cover Type				Density			
A = Aspen	H = Hemlock	N = Marsh	U = Upland Brush	0 = Non Stocked	5 = Pole Timber Medium		
B = Paper Birch	J = Jack Pine	O = Oak	UM = Upland Mixed	1 = Seedling Sapling Poor	6 = Pole Timber Well		
C = Cedar	L = Lowland Brush	P = Lowland Poplar	V = Bog or Marsh	2 = Seedling Sapling Medium	7 = Saw Timber Poor		
D = Treed Bog	LM = Lowland Mixed	Q = Mixed Swamp Conifer	W = White Pine	3 = Seedling Sapling Well	8 = Saw Timber Medium		
E = Swamp Hdwoods	M = Mpl, Bch, Brch	R = Red Pine	X = Non Stocked	4 = Pole Timber Poor	9 = Saw Timber Well		
F = Spruce Fir	MC = Mixed Conifer	S = Black Spruce	Z = Water				
G = Grass	MD = Mixed Deciduous	T = Tamarack					

Pringle Hardwoods
Compartments 64
54.5 Acres

PU	Acres
1	28.4
2	23.1
3	3.0



Legend

- Against State (Red)
- Payment Unit (Yellow)
- Private Line (Blue)
- Paved Road
- Gravel Road
- Two Tracked Road
- State Land Boundary
- Section Corner
- 9** Section Number
- 1** Payment Unit
- PVT Private Property
- G** Gate

