



**DEPARTMENT OF NATURAL RESOURCES  
STATE OF MICHIGAN  
TIMBER SALE PROSPECTUS #7141**

SCHEDULED SALE DATE AND TIME: **3:00 p.m. (local time) on November 14, 2022.**

LOCATION: **ESCANABA MGMT UNIT, 6833 HWY'S 2, 41 & M-35, GLADSTONE, MI 49837.**

CONTACT NAME: Eric Thompson

PHONE NUMBER: (906) 789-8231

PROSPECTUS NOTE: The bidder is advised to inspect the sale area and review the location, estimated volumes, operating costs and contract terms of proposed sales. Please be aware that some landowners may request 60 days or more notice for access across their land.

Notice is hereby given that bids will be received by the Unit Manager, ESCANABA MANAGEMENT UNIT, for certain timber on the following described lands:

South Ford (33-005-22) / T41N, R25W, SEC. 25, NWNW, SENW, SWNE.

Menominee County, Advertised Price \$8,954.35, 19.7 Acres, Hardwood, White Pine.

SALE NOTE: Note that the pine, softwood and ash volumes are calculated as pulpwood regardless of the diameter at breast height (dbh) size class. Contact Forester Dan Racine at the Escanaba Forest Resources Division Unit office for landowner contact information.

Access may be through private land.

## TIMBER SALE INFORMATION

South Ford (33-005-22)

T41N, R25W, SEC. 25.

Menominee County (Advertised Price \$8,954.35)

**SALE NOTE:** Note that the pine, softwood and ash volumes are calculated as pulpwood regardless of the diameter at breast height (dbh) size class. Contact Forester Dan Racine at the Escanaba Forest Resources Division Unit office for landowner contact information .

Access may be through private land.

A timber sale contract for this lump sum, sealed bid timber sale will be awarded to the responsible bidder offering the highest sealed bid price . All units of volume listed below were estimated using the Inventory Manager computer program and the new Michigan taper model. Bids must be at or above the following advertised price for each product and species:

<u>PRODUCTS &amp; SPECIES</u>	<u>ESTIMATED UNITS*</u>	<u>ADVERTISED PRICE</u>
Sawtimber		
Paper Birch	1.7 MBF	\$ 48.00 / MBF
Red Maple	4.0 MBF	\$ 122.00 / MBF
Pulpwood		
Balsam Fir	7 Cords	\$ 9.70 / Cord
Mixed Hardwood	112 Cords	\$ 13.70 / Cord
N. White Cedar	64 Cords	\$ 5.85 / Cord
Quaking Aspen	82 Cords	\$ 16.10 / Cord
White Pine	191 Cords	\$ 25.50 / Cord
White Spruce	21 Cords	\$ 10.35 / Cord

\* The total volume is statistically estimated within plus (+) or minus (-) 38.16 percent. There are an estimated 483 cords on this timber sale, plus or minus 184 cords at the 95% confidence level. The estimated units are final and not subject to adjustment. Prospective bidders are urged to examine this timber and to make their own estimates of quantity and quality.

### **BOND AND PAYMENT SCHEDULE:**

1. A bond in the amount of \$447.72 to insure faithful performance of the conditions of the contract will be deposited by the successful bidder within 21 days of the sale award.
2. Cutting in any sale or unit without the required advance payment would be considered a trespass.
3. Total payment must be paid in advance or according to the following schedule :
  - (a) Ten percent (10%) of the sale value must be paid within 21 days of the sale award.
  - (b) The 10% down payment will be credited towards the first unit cut.
  - (c) Payment for each of the following units must be made before cutting begins in that unit:

PAYMENT UNIT NUMBER	PERCENT OF TOTAL SALE VALUE
01	18.6%
02	81.4%
4. If no cutting takes place, the 10% down payment will not be refunded.
5. Operations on the contract issued will terminate on 09/30/2025.

### **SALE STATISTICS**

Volumes were calculated in cubic feet using the Michigan taper model . Cubic foot volume includes all wood inside bark for the product indicated. For display purposes, cubic feet were converted to cords and MBF using a simple conversion factor, e.g. 79 cubic feet per cord and 185 cubic feet per MBF. The cubic foot volumes are precise; the cords and MBF volumes are not. Cubic foot volume cannot be directly converted to cords or boards with precision.

### **SALE VOLUMES**

The total estimated sale volume may not equal the sum of the species/products due to the nature of statistical calculations associated with double sampling methodology.

VOLUME			STATISTICAL RANGE IN CORDS	
TOTAL CUBIC FEET	TOTAL CORDS	PERCENT ERROR	MINIMUM	MAXIMUM
38,187	483	38.16%	299	668

## VDU VOLUMES

A VDU is a Volume Determination Unit. Volumes and their associated statistics are calculated at the VDU level and summarized to the sale level. There is often a one to one relationship between a VDU and a Payment Unit, but not always, depending on the cruise design. Refer to the VDU TO PAYMENT UNIT table.

	VOLUME			RANGE IN CORDS	
VDU	TOTAL CUBIC FEET	TOTAL CORDS	PERCENT ERROR	MINIMUM	MAXIMUM
37	9,066	115	92.78%	8	221
49	29,120	369	51.57%	179	559
<b>TOTAL:</b>	<b>38,187</b>	<b>483</b>		<b>187</b>	<b>780</b>

## VDU TO PAYMENT UNIT

When a VDU is associated with more than one Payment Unit (PU), the VDU volumes are assigned to the PU based on acres of the VDU within the PU.

VDU	VDU ACRES	PU	PU ACRES
37	4.6	1	4.6
49	15.1	2	15.1
<b>TOTAL:</b>	<b>19.7</b>		<b>19.7</b>

## DESCRIPTION OF TIMBER BY PU (PU)

PU	MARKET GROUP	PRODUCT	QUANTITY	UNIT	ACRES	ADVERTISE PRICE
1	Red Maple	Sawtimber	2.5	MBF	4.6	\$1,664.55
	Balsam Fir	Pulpwood	7	Cords		
	Mixed Hardwood		84	Cords		
	Green Ash		1	Cords		
	Paper Birch		46	Cords		
	Red Maple		36	Cords		
	Sugar Maple		1	Cords		
	N. White Cedar		17	Cords		
	White Spruce		4	Cords		
2	Paper Birch	Sawtimber	1.7	MBF	15.1	\$7,289.80
	Red Maple		1.5	MBF		
	Mixed Hardwood	Pulpwood	28	Cords		
	Paper Birch		2	Cords		
	Red Maple		26	Cords		
	N. White Cedar		47	Cords		
	Quaking Aspen		82	Cords		
	White Pine		191	Cords		
	White Spruce		17	Cords		
TOTAL:			5.7	MBF		
TOTAL:			477	Cords		

## **Sale Specific Conditions & Requirements**

**Sale Name: South Ford**

**Sale Number: 33-005-22 Seq#: 1**

### **1 - Sale Area**

#### **1.2 - Boundaries**

##### **1.2.1 - Painted boundaries (9/19)**

The sale boundary and Payment Unit boundaries are marked and identified by blue and red paint. Exterior sale boundary lines against private property are marked with blue paint. Exterior sale boundary lines against state are marked with red paint.

### **2 - Timber Specifications**

#### **2.1 - Included Timber**

##### **2.1.1 - Clearcut unit(s) with unmerchantable trees (6/14)**

Within Payment Unit(s) 1, cut all trees that are three (3) inches or more at DBH except do not cut hemlock or trees marked with green paint above and below stump height.

##### **2.1.7 - Leave tree marked unit(s) (6/14)**

Within Payment Unit(s) 2, cut all merchantable trees except do not cut hemlock or trees marked with green paint above and below stump height. Reference contract specification 3.4.1 within payment unit 2.

##### **2.1.11 - Description of timber note (2/04)**

Note that all pine, softwood and ash is calculated as pulpwood volumes regardless of the diameter at breast height (dbh) size class.

### **3 - Payments**

#### **3.3 - Pre-measured Sales**

##### **3.3.4 - Dividing payment units (7/14)**

Payment Unit(s) with a contract bid value of \$18,000 dollars or greater may be divided at the request of the Purchaser and upon approval of the Unit Manager. Dividing Payment Units is a contract modification which requires a Timber Sale Contract Amendment. There will be only one division per Payment Unit.

#### **3.4 - Damaged Timber**

##### **3.4.1 - Damaged timber (7/16)**

General Condition and Requirement 3.4 Damaged Timber, defines liquidated damages for undesignated live merchantable trees which are cut or injured. In addition, within payment unit 2 extreme care should be taken to avoid damage to tree seedlings and saplings.

Within payment unit 2, if more than 30 percent% of the pine tree seedlings or saplings (1/4" to 4.5" DBH) are damaged, liquidated damages will be assessed at \$100 dollars per acre for all acreage within that specified portion of the unit area that was damaged.

### **4 - Transportation**

#### **4.1 - Construction**

##### **4.1.6 - Road construction (1/09)**

Construction of new roads or improvements of existing roads shall be done in such a way as to minimize the environmental and visual impacts. Merchantable trees shall be cut and utilized unless otherwise directed. Non-merchantable trees shall be severed and laid flat on the ground. Slash shall be scattered, and not left in windrows and kept a minimum of 10 feet back from the road edge. Stumps shall be set upright, not left on edge, and be moved at least 10 feet away from the road edge. Disturbed soil shall be feathered into the woods and not left in berms or windrows.

#### **4.2 - Maintenance**

#### 4.2.2 - Fill material (4/07)

To maintain roads, fill material may be needed in areas where "holes" exist or may be expected to develop. This fill material should be placed before trucking begins. Contact the sale administrator regarding the availability of onsite sand or gravel from adjacent State-owned lands.

#### 4.2.4 - Grading (10/16)

For completion of the sale, state forest roads must be graded. In general, this will require a road grader or bull dozer to shape up the roads after forest products have been hauled off site. This includes cleaning of drainage areas, grading, crowning and filling with gravel, if necessary. The grading equipment to be used must be approved by the Unit Manager or his/her representative.

### 4.4 - Access

#### 4.4.1 - Private property access (3/11)

Permission for access across private land is the responsibility of the Purchaser. Should the Purchaser desire to cross private land, a copy of the written permission from the private land-owner may be required by the DNR. Contact the Escanaba Forest Resources Division Unit office for landowner contact information.

## 5 - Operations

### 5.2 - Conduct of Operations

#### 5.2.3 - Operating Restrictions

##### 5.2.3.6 - Bark beetle restriction (12/08)

In the event drought creates a high risk of pine bark beetle infestation, pine is not to be cut during the period March 1 through July 1, unless all portions of trees greater than two inches in diameter are removed from the sale area, reduced to chips, or treated to the satisfaction of the Unit Manager or his/her representative, within fifteen days of being severed from the stump. Pine log decks, pulpwood piles and treetops that are piled for chipping in the fall or winter within a 1/4 mile of susceptible sites must be removed before March 15. Residual slash must not be placed in piles or rows and must be spread over the site for quick drying. The Department of Natural Resources will exercise this specification if the risk of damage warrants.

### 5.4 - Soil Protection

#### 5.4.1 - Rutting restriction, general (7/16)

Operations are to cease immediately if equipment and weather conditions result in rutting of roads and/or skid trails which is 12 inches or greater in depth and 50 feet in length. The Unit Manager or his/her representative may restrict hauling and/or skidding if ruts exceed the specified depth. With the Unit Manager or his/her representative's approval, the Purchaser may return to the area when the risk of rutting has decreased.

### 5.8 - Protection of Endangered Species

#### 5.8.5 - Protection of raptor nests (3/13)

All trees with raptor nests will be protected if found during harvesting operations. Notification will be made to the Unit Manager or his/her representative who will notify the Wildlife Biologist so an on-site evaluation and recommendation can be made, if necessary.

**TIMBER SALE MAP***This information provided by authority of Part 525, 1994 PA 451, as amended.*

Forest Management Unit Escanaba		County Menominee	Mapped By Racine	Date 09/11/2022	Page 1	of 1
Township 41N	Range 25W	Section(s) and Subdivision(s) NWNW, SENW, SWNE		Cruised By Reger	Scale 1:15,840	

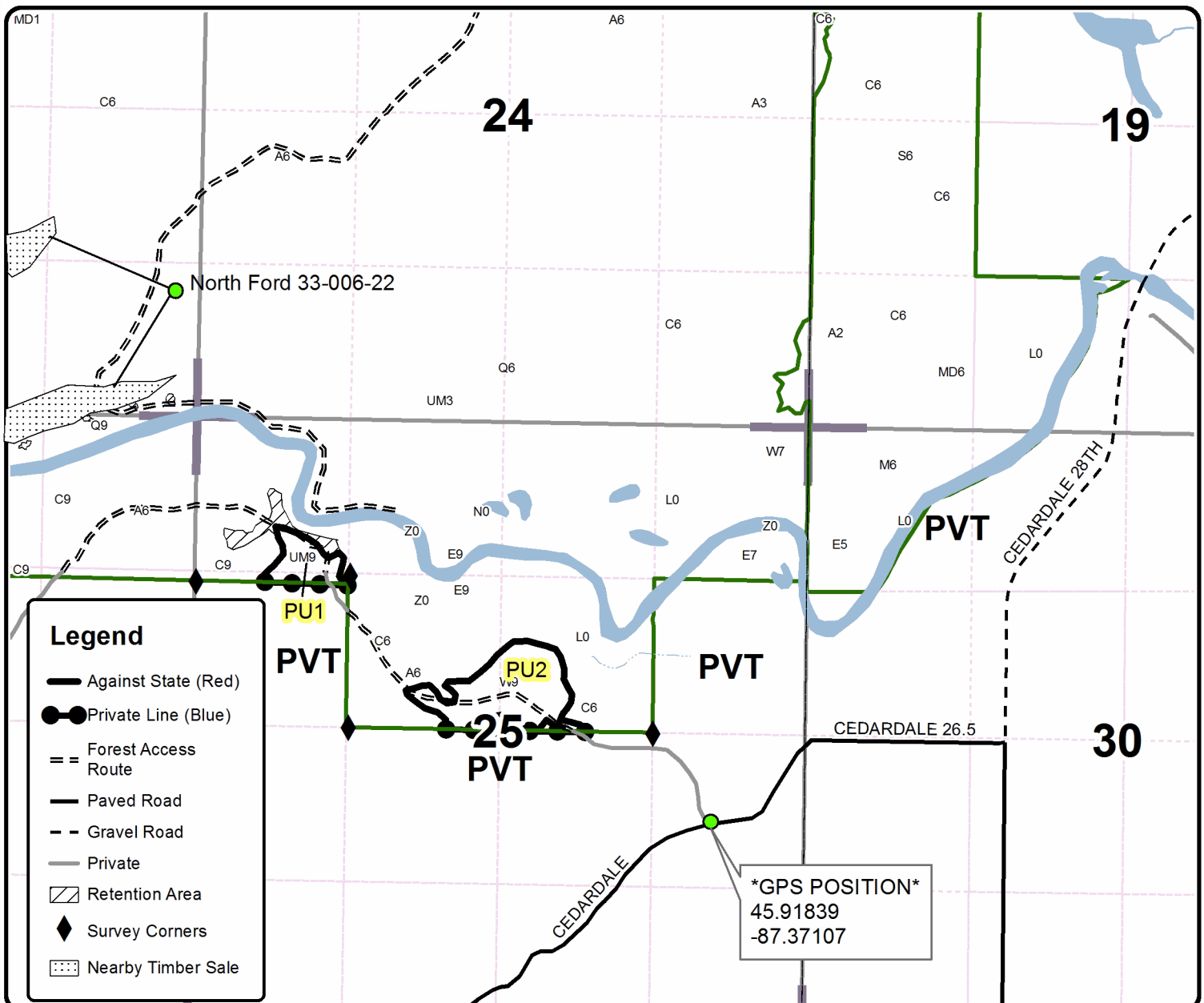
**Cover Type**

A = Aspen	H = Hemlock	N = Marsh	U = Upland Brush
B = Paper Birch	J = Jack Pine	O = Oak	UM = Upland Mixed
C = Cedar	L = Lowland Brush	P = Lowland Poplar	V = Bog or Marsh
D = Treed Bog	LM = Lowland Mixed	Q = Mixed Swamp Conifer	W = White Pine
E = Swamp Hdwoods	M = Mpl, Bch, Brch	R = Red Pine	X = Non Stocked
F = Spruce Fir	MC = Mixed Conifer	S = Black Spruce	Z = Water
G = Grass	MD = Mixed Deciduous	T = Tamarack	

**Density**

0 = Non Stocked	5 = Pole Timber Medium
1 = Seedling Sapling Poor	6 = Pole Timber Well
2 = Seedling Sapling Medium	7 = Saw Timber Poor
3 = Seedling Sapling Well	8 = Saw Timber Medium
4 = Pole Timber Poor	9 = Saw Timber Well

PU	Acres
1	4.6
2	15.1

**South Ford**  
**Compartment 72**  
**19.7 Acres**

0 0.125 0.25 0.5 0.75 1 Miles