



**DEPARTMENT OF NATURAL RESOURCES  
STATE OF MICHIGAN  
TIMBER SALE PROSPECTUS #7196**

**SCHEDULED SALE DATE AND TIME: 3:00 p.m. (local time) on February 9, 2023.**

**LOCATION: ESCANABA MGMT UNIT, 6833 HWY'S 2, 41 & M-35, GLADSTONE, MI 49837.**

**CONTACT NAME: Eric Thompson**

**PHONE NUMBER: (906) 789-8231**

**PROSPECTUS NOTE:** The bidder is advised to inspect the sale area and review the location, estimated volumes, operating costs and contract terms of proposed sales. Please be aware that some landowners may request 60 days or more notice for access across their land.

Notice is hereby given that bids will be received by the Unit Manager, ESCANABA MANAGEMENT UNIT, for certain timber on the following described lands:

Rusty Stove (33-007-22) / T36N, R24W, SEC. 17, E1/2NE,NWSW.

T36N, R24W, SEC. 18, SENE,NESE,S1/2SE.

T36N, R24W, SEC. 19, NENW,S1/2NW,W1/2NE,N1/2SW.

T36N, R24W, SEC. 19, W1/2SE.

T36N, R24W, SEC. 30, NWNE.

Menominee County, Advertised Price \$70,850.60, 142.8 Acres, Hardwood, Spruce/Fir/Tamarack.

SALE NOTE: Access route is shown on attached timber sale map for payment unit 6. Potential for access through private property to the south off Fox Lane is the responsibility of the purchaser .

Management easement for access to payment units off M-35.

## TIMBER SALE INFORMATION

### Rusty Stove (33-007-22)

T36N, R24W, SEC. 17; T36N, R24W, SEC. 18; T36N, R24W, SEC. 19; T36N, R24W, SEC. 30.

Menominee County (Advertised Price \$70,850.60)

**SALE NOTE:** Access route is shown on attached timber sale map for payment unit 6. Potential for access through private property to the south off Fox Lane is the responsibility of the purchaser. Management easement for access to payment units off M-35.

A timber sale contract for this lump sum, sealed bid timber sale will be awarded to the responsible bidder offering the highest sealed bid price. All units of volume listed below were estimated using the Inventory Manager computer program and the new Michigan taper model. Bids must be at or above the following advertised price for each product and species:

<u>PRODUCTS &amp; SPECIES</u>	<u>ESTIMATED UNITS*</u>	<u>ADVERTISED PRICE</u>
Sawtimber		
Paper Birch	7.0 MBF	\$ 70.00 / MBF
Red Maple	113.5 MBF	\$ 174.00 / MBF
Sugar Maple	3.0 MBF	\$ 213.00 / MBF
Yellow Birch	3.4 MBF	\$ 36.00 / MBF
Pulpwood		
Balsam Fir	165 Cords	\$ 13.20 / Cord
Black Ash	227 Cords	\$ 18.10 / Cord
Green Ash	913 Cords	\$ 18.10 / Cord
Mixed Hardwood	456 Cords	\$ 18.10 / Cord
Mixed Spruce	626 Cords	\$ 15.35 / Cord
N. White Cedar	759 Cords	\$ 7.30 / Cord
Quaking Aspen	11 Cords	\$ 25.30 / Cord
Tamarack	112 Cords	\$ 24.60 / Cord
White Ash	22 Cords	\$ 18.10 / Cord
White Pine	6 Cords	\$ 33.85 / Cord

\* The total volume is statistically estimated within plus (+) or minus (-) 14.78 percent. There are an estimated 3,606 cords on this timber sale, plus or minus 533 cords at the 95% confidence level. The estimated units are final and not subject to adjustment. Prospective bidders are urged to examine this timber and to make their own estimates of quantity and quality.

### **BOND AND PAYMENT SCHEDULE:**

1. A bond in the amount of \$3,542.53 to insure faithful performance of the conditions of the contract will be deposited by the successful bidder within 21 days of the sale award.
2. Cutting in any sale or unit without the required advance payment would be considered a trespass.
3. Total payment must be paid in advance or according to the following schedule :
  - (a) Ten percent (10%) of the sale value must be paid within 21 days of the sale award.
  - (b) The 10% down payment will be credited towards the first unit cut.
  - (c) Payment for each of the following units must be made before cutting begins in that unit:

<u>PAYMENT UNIT NUMBER</u>	<u>PERCENT OF TOTAL SALE VALUE</u>
01	4.1%
02	15.8%
03	15.2%
04	34.9%
05	8.0%
06	8.9%
07	11.2%
08	1.9%

4. If no cutting takes place, the 10% down payment will not be refunded.
5. Operations on the contract issued will terminate on 09/30/2026.

### **SALE STATISTICS**

Volumes were calculated in cubic feet using the Michigan taper model. Cubic foot volume includes all wood inside bark for the product indicated. For display purposes, cubic feet were converted to cords and MBF using a simple conversion factor, e.g. 79 cubic feet per cord and 185 cubic feet per MBF. The cubic foot volumes are precise; the cords and MBF volumes are not. Cubic foot volume cannot be directly converted to cords or boards with precision.

## SALE VOLUMES

The total estimated sale volume may not equal the sum of the species/products due to the nature of statistical calculations associated with double sampling methodology.

VOLUME			STATISTICAL RANGE IN CORDS	
TOTAL CUBIC FEET	TOTAL CORDS	PERCENT ERROR	MINIMUM	MAXIMUM
284,852	3,606	14.78%	3,073	4,139

## VDU VOLUMES

A VDU is a Volume Determination Unit. Volumes and their associated statistics are calculated at the VDU level and summarized to the sale level. There is often a one to one relationship between a VDU and a Payment Unit, but not always, depending on the cruise design. Refer to the VDU TO PAYMENT UNIT table.

	VOLUME			RANGE IN CORDS	
VDU	TOTAL CUBIC FEET	TOTAL CORDS	PERCENT ERROR	MINIMUM	MAXIMUM
12	36,828	466	24.58%	352	581
13	3,418	43	82.37%	8	79
15	29,837	378	62.70%	141	615
16	104,437	1,322	23.82%	1,007	1,637
19	26,145	331	38.45%	204	458
21	41,356	523	25.92%	388	659
25	10,299	130	70.90%	38	223
46	32,532	412	33.17%	275	548
<b>TOTAL:</b>	<b>284,852</b>	<b>3,606</b>		<b>2,412</b>	<b>4,800</b>

## VDU TO PAYMENT UNIT

When a VDU is associated with more than one Payment Unit (PU), the VDU volumes are assigned to the PU based on acres of the VDU within the PU.

VDU	VDU ACRES	PU	PU ACRES
12	19.0	7	19.0
13	11.1	8	11.1
15	9.5	5	9.5
16	33.2	4	33.2
19	9.1	3	9.1
21	33.5	2	33.5
25	9.4	1	9.4
46	18.0	6	18.0
<b>TOTAL:</b>	<b>142.8</b>		<b>142.8</b>

**DESCRIPTION OF TIMBER BY PU (PU)**

PU	MARKET GROUP	PRODUCT	QUANTITY	UNIT	ACRES	ADVERTISE PRICE
1	Paper Birch	Sawtimber	0.7	MBF	9.4	\$2,874.45
	Red Maple		0.5	MBF		
	Balsam Fir	Pulpwood	2	Cords		
	Black Ash		3	Cords		
	Mixed Hardwood		23	Cords		
	<i>Balsam Poplar</i>		18	Cords		
	<i>Paper Birch</i>		2	Cords		
	<i>Red Maple</i>		3	Cords		
	Mixed Spruce		37	Cords		
	<i>White Spruce</i>		37	Cords		
	Quaking Aspen		1	Cords		
	Tamarack		67	Cords		
2	Paper Birch	Sawtimber	6.3	MBF	33.5	\$11,212.70
	Red Maple		17.4	MBF		
	Yellow Birch		3.4	MBF		
	Balsam Fir	Pulpwood	41	Cords		
	Black Ash		86	Cords		
	Green Ash		142	Cords		
	Mixed Hardwood		114	Cords		
	<i>Balsam Poplar</i>		17	Cords		
	<i>Paper Birch</i>		26	Cords		
	<i>Red Maple</i>		63	Cords		
	<i>Yellow Birch</i>		8	Cords		
	Mixed Spruce		58	Cords		
	<i>Black Spruce</i>		15	Cords		
	<i>White Spruce</i>		43	Cords		
3	Red Maple	Sawtimber	37.0	MBF	9.1	\$10,756.75
	Black Ash	Pulpwood	27	Cords		
	Green Ash		52	Cords		
	Mixed Hardwood		141	Cords		
	<i>Balsam Poplar</i>		10	Cords		
	<i>Red Maple</i>		127	Cords		
	<i>Yellow Birch</i>		4	Cords		
	Mixed Spruce		11	Cords		
	<i>White Spruce</i>		11	Cords		
	N. White Cedar		23	Cords		
4	Red Maple	Sawtimber	55.1	MBF	33.2	\$24,680.15
	Balsam Fir	Pulpwood	18	Cords		
	Black Ash		65	Cords		
	Green Ash		389	Cords		
	Mixed Hardwood		109	Cords		
	<i>Red Maple</i>		109	Cords		
	Mixed Spruce		23	Cords		
	<i>White Spruce</i>		23	Cords		
	N. White Cedar		556	Cords		
	Quaking Aspen		10	Cords		
5	Black Ash	Pulpwood	17	Cords	9.5	\$5,680.35
	Green Ash		220	Cords		
	Mixed Hardwood		12	Cords		
	<i>Balsam Poplar</i>		12	Cords		
	Mixed Spruce		17	Cords		
	<i>Black Spruce</i>		12	Cords		
	<i>White Spruce</i>		5	Cords		
	N. White Cedar		125	Cords		
6	Mixed Spruce	Pulpwood	301	Cords	18.0	\$6,331.95

**DESCRIPTION OF TIMBER BY PU (PU), CON'T**

PU	MARKET GROUP	PRODUCT	QUANTITY	UNIT	ACRES	ADVERTISE PRICE				
6 con't	<i>Black Spruce</i>	<i>Pulpwood</i>	301	<i>Cords</i>						
	N. White Cedar		55	Cords						
	Tamarack		45	Cords						
	White Pine		6	Cords						
7	Red Maple	Sawtimber Pulpwood	3.5	MBF	19.0	\$7,965.95				
	Balsam Fir		101	Cords						
	Black Ash		29	Cords						
	Green Ash		104	Cords						
	Mixed Hardwood		48	Cords						
	<i>Balsam Poplar</i>		10	<i>Cords</i>						
	<i>Ironwood</i>		14	<i>Cords</i>						
	<i>Paper Birch</i>		13	<i>Cords</i>						
	<i>Red Maple</i>		11	<i>Cords</i>						
	Mixed Spruce		179	Cords						
	<i>White Spruce</i>		179	<i>Cords</i>						
	8		Sugar Maple	Sawtimber Pulpwood			3.0	MBF	11.1	\$1,348.30
			Balsam Fir				3	Cords		
Green Ash		6	Cords							
Mixed Hardwood		9	Cords							
<i>Ironwood</i>		2	<i>Cords</i>							
<i>Red Maple</i>		4	<i>Cords</i>							
<i>Sugar Maple</i>		3	<i>Cords</i>							
White Ash		22	Cords							
TOTAL:			126.9		MBF					
TOTAL:			3,297	Cords						

## **Sale Specific Conditions & Requirements**

**Sale Name: Rusty Stove**

**Sale Number: 33-007-22 Seq#: 1**

### **1 - Sale Area**

#### **1.2 - Boundaries**

##### **1.2.1 - Painted boundaries (9/19)**

The sale boundary and Payment Unit boundaries are marked and identified by blue, red and yellow paint. Exterior sale boundary lines against private property are marked with blue paint. Exterior sale boundary lines against state are marked with red paint. Interior Payment Unit boundaries are marked with yellow paint. Retention patches are marked with red paint; no harvesting activities may occur within these areas. The painted boundary line trees are not Included Timber and are to be protected unless marked with orange paint. Yellow painted trees designating an interior Payment Unit boundary are only to be cut when all surrounding Payment Units have been paid.

### **2 - Timber Specifications**

#### **2.1 - Included Timber**

##### **2.1.1 - Clearcut unit(s) with unmerchantable trees (6/14)**

Within Payment Unit(s) 5 and 6, cut all trees that are three (3) inches or more at DBH with the following exceptions:

Unit 5- Do not cut hemlock, yellow birch and/or trees marked with green paint above and below stump height.

##### **2.1.2 - Clearcut unit(s) w/o unmerchantable trees (8/11)**

Within Payment Unit(s) 3, cut all trees which meet minimum piece specifications in 2.2 Utilization except hemlock and/or trees marked with green paint at stump and breast height.

##### **2.1.3 - Cut tree marked unit(s) (12/08)**

Within Payment Unit(s) 8, all trees are designated for cutting when marked with orange paint above and below stump height, regardless of merchantability.

##### **2.1.7 - Leave tree marked unit(s) (6/14)**

Within Payment Unit(s) 1, 2, 4 and 7, all trees, which meet minimum piece specifications in 2.2 Utilization, are designated for cutting except trees marked with green paint above and below stump height and the following exceptions:

Unit 1- Do not cut hemlock and cedar.

Unit 2- Do not cut hemlock, cedar and white pine. Refer to Harvest exception specification 2.1.9.

Unit 4- Do not cut hemlock and yellow birch.

Unit 7- Do not cut hemlock, cedar and pine.

##### **2.1.9 - Harvest exception (12/08)**

Do not cut within payment unit 2 any cedar trees other than those that are necessary to remove in order to operate within the sale area. Every effort must be made to preserve the existing cedar and to leave an intact stand upon sale completion. All cut cedar shall be piled separately by products and scaled in the woods unless other scaling arrangements are agreed to by the Unit Manager or his/her representative. Stumpage price for cedar shall be \$45.00 dollars per cord.

##### **2.1.11 - Description of timber note (2/04)**

Note that All aspen, balm, softwood species and ash have been tallied as pulpwood volumes regardless of the diameter at breast height (dbh) size class.

### **3 - Payments**

#### **3.3 - Pre-measured Sales**

##### **3.3.4 - Dividing payment units (7/14)**

Payment Unit(s) with a contract bid value of \$18,000 dollars or greater may be divided at the request of the Purchaser and upon approval of the Unit Manager. Dividing Payment Units is a contract modification which requires a Timber Sale Contract Amendment. There will be only one division per Payment Unit.

## **4 - Transportation**

### **4.1 - Construction**

#### **4.1.6 - Road construction (1/09)**

Construction of new roads or improvements of existing roads shall be done in such a way as to minimize the environmental and visual impacts. Merchantable trees shall be cut and utilized unless otherwise directed. Non-merchantable trees shall be severed and laid flat on the ground. Slash shall be scattered, and not left in windrows and kept a minimum of 10 feet back from the road edge. Stumps shall be set upright, not left on edge, and be moved at least 10 feet away from the road edge. Disturbed soil shall be feathered into the woods and not left in berms or windrows.

#### **4.1.7 - Road closure (10/11)**

All new roads built into the sale must be blocked to vehicle traffic upon completion of the sale. Overgrown roads that are reopened shall be considered new roads. In general, this will require constructing a four (4') foot high berm of stumps and logs covered with earth. These roads must be rendered impassable to cars and trucks. Contact the sale administrator for specific details of design and placement.

### **4.2 - Maintenance**

#### **4.2.2 - Fill material (4/07)**

To maintain roads, fill material may be needed in areas where "holes" exist or may be expected to develop. This fill material should be placed before trucking begins. Contact the sale administrator regarding the availability of onsite sand or gravel from adjacent State-owned lands.

#### **4.2.4 - Grading (10/16)**

For completion of the sale, state forest roads must be graded. In general, this will require a road grader or bull dozer to shape up the roads after forest products have been hauled off site. This includes cleaning of drainage areas, grading, crowning and filling with gravel, if necessary. The grading equipment to be used must be approved by the Unit Manager or his/her representative.

### **4.3 - Public Right-of-Way**

#### **4.3.1 - MDOT R-O-W (11/14)**

The Michigan Department of Transportation (MDOT) must be contacted prior to harvesting timber within the MDOT right-of-way. The purchaser must contact Dan Kari with MDOT at 906-875-6644 at least 2 weeks prior to any operations within payment unit 1.

### **4.4 - Access**

#### **4.4.2 - Alternate route on private property (2/04)**

It is the Purchaser's responsibility to obtain access across private land for any routes other than the route shown on the Timber Sale Map.

## **5 - Operations**

### **5.1 - Notification**

#### **5.1.6 - Utility R.O.W. (4/19)**

It is the responsibility of the Purchaser to obtain permission from the utility company to utilize the power line R.O.W. for operations.

### **5.2 - Conduct of Operations**

#### **5.2.2 - Hazard Trees/Snags**

##### **5.2.2.1 - Den trees (10/16)**

Obvious hollow and/or den trees shall be protected and left standing unless they are a safety hazard.

#### **5.2.3 - Operating Restrictions**

##### **5.2.3.1 - Operating restrictions (9/11)**

Within Payment Unit(s) 6 cutting, skidding, and hauling are limited to the period of December 1st to March 31st, unless there is an extended dry or frozen period, and the sale administrator allows harvesting during that time period. This restriction is because of the low ground access through state forest land and within the payment unit.

#### 5.2.3.3 - Bark slippage restriction (3/09)

Within Payment Unit(s) 8, unless changed by written agreement, cutting and skidding are not permitted during the period of April 15 to July 15. This restriction is because of bark slippage.

### 5.2.22 - Operating Caution

#### 5.2.22.1 - Operating caution (6/11)

It is recommended, but not required, that within Payment Unit(s) 1, 2, 3, 4, 5 and 7, cutting, skidding, and hauling occur during dry summer or frozen winter conditions. The reason for the recommendation is because areas of these units are low and potentially wet ground.

### 5.4 - Soil Protection

#### 5.4.1 - Rutting restriction, general (7/16)

Operations are to cease immediately if equipment and weather conditions result in rutting of roads and/or skid trails which is 12 inches or greater in depth and 50 feet in length. The Unit Manager or his/her representative may restrict hauling and/or skidding if ruts exceed the specified depth. With the Unit Manager or his/her representative's approval, the Purchaser may return to the area when the risk of rutting has decreased.

#### 5.4.6 - Wet area protection (5/10)

No harvesting operations, including skidding and felling, are to take place within the vernal pond areas or drainages that occur within payment unit 1. These areas are red lined out of the sale boundary or within the retention areas. When harvesting occurs, there should be no disturbance to the vernal pond depression. All equipment, trees and tops should be kept out of this area. Within 100 feet of the pond, equipment should only be used when the soil is in a dry or frozen condition. Care must be taken by the Purchaser to identify and avoid operating in these areas of the timber sale.

### 5.8 - Protection of Endangered Species

#### 5.8.5 - Protection of raptor nests (3/13)

All trees with raptor nests will be protected if found during harvesting operations. Notification will be made to the Unit Manager or his/her representative who will notify the Wildlife Biologist so an on-site evaluation and recommendation can be made, if necessary.

## 6 - Safety and Fire Prevention

### 6.2 - Signing

#### 6.2.1 - Road posting (10/20)

The Purchaser is responsible for posting and maintaining caution signs on M-35 prior to beginning operations. The road must be posted as specified by MDOT and at appropriate distances from the sale area to warn of logging activity and truck traffic. Signs must be removed when harvest operations are suspended or completed. The Purchaser will provide these signs.



**TIMBER SALE MAP**

This information provided by authority of Part 525, 1994 PA 451, as amended.

Sale Number	Year
33-007	22

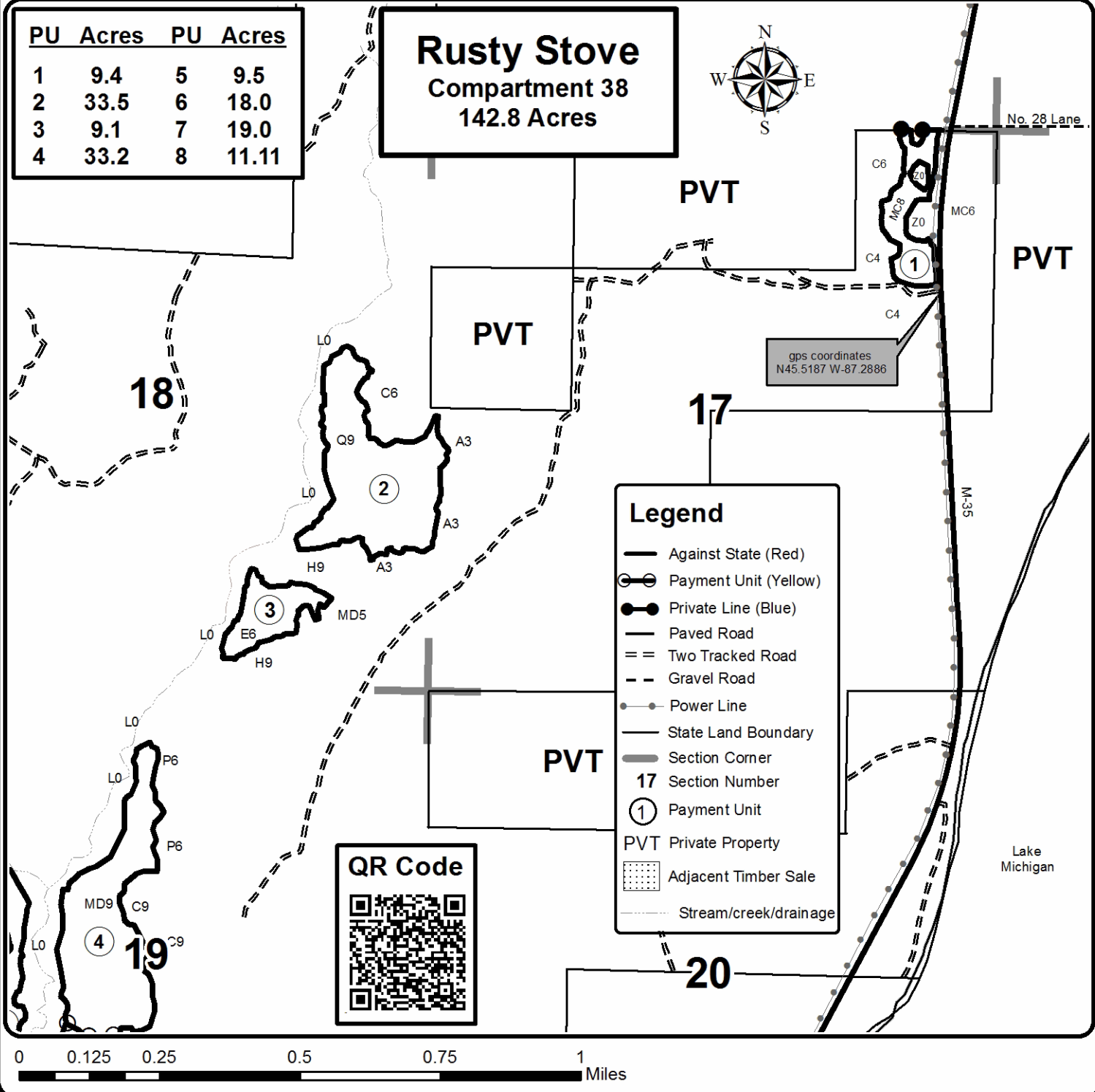
Forest Management Unit Escanaba Management Unit	County Menominee County	Mapped By Beaudo	Date 9/11/2022	Page 1	of 2
Township 36N	Range 24W	Section(s) and Subdivision(s) Sec 17 - E1/2NE, NWSW; Sec 18 - SENE, NESE, S1/2SE; Sec 19 - W1/2SE, NENW, S1/2NW, W1/2NE, N1/2SW; Sec 30 - NWNE.	Scale 1:15,840		

**Cover Type**

A = Aspen	H = Hemlock	N = Marsh	U = Upland Brush
B = Paper Birch	J = Jack Pine	O = Oak	UM = Upland Mixed
C = Cedar	L = Lowland Brush	P = Lowland Poplar	V = Bog or Marsh
D = Treed Bog	LM = Lowland Mixed	Q = Mixed Swamp Conifer	W = White Pine
E = Swamp Hdwoods	M = Mpl, Bch, Brch	R = Red Pine	X = Non Stocked
F = Spruce Fir	MC = Mixed Conifer	S = Black Spruce	Z = Water
G = Grass	MD = Mixed Deciduous	T = Tamarack	

**Density**

0 = Non Stocked	5 = Pole Timber Medium
1 = Seedling Sapling Poor	6 = Pole Timber Well
2 = Seedling Sapling Medium	7 = Saw Timber Poor
3 = Seedling Sapling Well	8 = Saw Timber Medium
4 = Pole Timber Poor	9 = Saw Timber Well



**TIMBER SALE MAP**

This information provided by authority of Part 525, 1994 PA 451, as amended.

Sale Number	Year
33-007	22

Forest Management Unit Escanaba Management Unit	County Menominee County	Mapped By Beaudo	Date 9/11/2022	Page 2	of 2
Township 36N	Range 24W	Section(s) and Subdivision(s) Sec 17 - E1/2NE, NWSW; Sec 18 - SENE, NESE, S1/2SE; Sec 19 - W1/2SE, NENW, S1/2NW, W1/2NE, N1/2SW; Sec 30 - NWNE.	Scale 1:15,840		

**Cover Type**

A = Aspen	H = Hemlock	N = Marsh	U = Upland Brush
B = Paper Birch	J = Jack Pine	O = Oak	UM = Upland Mixed
C = Cedar	L = Lowland Brush	P = Lowland Poplar	V = Bog or Marsh
D = Treed Bog	LM = Lowland Mixed	Q = Mixed Swamp Conifer	W = White Pine
E = Swamp Hdwoods	M = Mpl, Bch, Brch	R = Red Pine	X = Non Stocked
F = Spruce Fir	MC = Mixed Conifer	S = Black Spruce	Z = Water
G = Grass	MD = Mixed Deciduous	T = Tamarack	

**Density**

0 = Non Stocked	5 = Pole Timber Medium
1 = Seedling Sapling Poor	6 = Pole Timber Well
2 = Seedling Sapling Medium	7 = Saw Timber Poor
3 = Seedling Sapling Well	8 = Saw Timber Medium
4 = Pole Timber Poor	9 = Saw Timber Well

## Rusty Stove Compartment 38 142.8 Acres

**PVT****QR Code**gps coordinates  
N45.4997 W-87.3265**Legend**

- Against State (Red)
- Payment Unit (Yellow)
- Private Line (Blue)
- Paved Road
- == Two Tracked Road
- - Gravel Road
- Power Line
- State Land Boundary
- Section Corner
- 17 Section Number
- ① Payment Unit
- PVT Private Property
- Adjacent Timber Sale
- Stream/creek/drainage

**PVT****PVT****PVT**

PU	Acres	PU	Acres
1	9.4	5	9.5
2	33.5	6	18.0
3	9.1	7	19.0
4	33.2	8	11.11

0 0.125 0.25 0.5 0.75 1 Miles