



**DEPARTMENT OF NATURAL RESOURCES
STATE OF MICHIGAN
TIMBER SALE PROSPECTUS #7308**

SCHEDULED SALE DATE AND TIME: **2:00 p.m. (local time) on April 8, 2024.**

LOCATION: **GWINN MGMT UNIT, 410 WEST M 35, GWINN, MI 49841.**

CONTACT NAME: Mike Brodeur

PHONE NUMBER: (906) 346-9201

PROSPECTUS NOTE: The bidder is advised to inspect the sale area and review the location, estimated volumes, operating costs and contract terms of proposed sales. Please be aware that some landowners may request 60 days or more notice for access across their land.

Notice is hereby given that bids will be received by the Unit Manager, GWINN MANAGEMENT UNIT, for certain timber on the following described lands:

Aspen and Maple (32-014-23) / T48N, R28W, SEC. 12, W1/2NE.

T48N, R28W, SEC. 2 , NWNE.

T48N, R28W, SEC. 3 , NE.

T49N, R28W, SEC. 35, N1/2SW, NESE, S1/2SE.

Marquette County, Advertised Price \$58,332.75, 105.4 Acres, Aspen, Hardwood.

SALE NOTE: Payment Unit 4 is to be harvested during frozen condition only due to areas of saturated ground, see spec 5.2.3.1, Operating restrictions.

TIMBER SALE INFORMATION

Aspen and Maple (32-014-23)

T48N, R28W, SEC. 12; T48N, R28W, SEC. 2; T48N, R28W, SEC. 3; T49N, R28W, SEC. 35.

Marquette County (Advertised Price \$58,332.75)

SALE NOTE: Payment Unit 4 is to be harvested during frozen condition only due to areas of saturated ground, see spec 5.2.3.1, Operating restrictions.

A timber sale contract for this lump sum, sealed bid timber sale will be awarded to the responsible bidder offering the highest sealed bid price. All units of volume listed below were estimated using the Inventory Manager computer program and the new Michigan taper model. Bids must be at or above the following advertised price for each product and species:

<u>PRODUCTS & SPECIES</u>	<u>ESTIMATED UNITS*</u>	<u>ADVERTISED PRICE</u>
Sawtimber		
Red Maple	18.4 MBF	\$ 124.00 / MBF
Sugar Maple	140.5 MBF	\$ 160.00 / MBF
Pulpwood		
Balsam Fir	152 Cords	\$ 14.05 / Cord
Mixed Hardwood	1,054 Cords	\$ 16.05 / Cord
Mixed Spruce	114 Cords	\$ 17.40 / Cord
Quaking Aspen	441 Cords	\$ 27.55 / Cord
Tamarack	19 Cords	\$ 20.30 / Cord

* The total volume is statistically estimated within plus (+) or minus (-) 10.23 percent. There are an estimated 2,152 cords on this timber sale, plus or minus 220 cords at the 95% confidence level. The estimated units are final and not subject to adjustment. Prospective bidders are urged to examine this timber and to make their own estimates of quantity and quality.

BOND AND PAYMENT SCHEDULE:

1. A bond in the amount of \$2,916.64 to insure faithful performance of the conditions of the contract will be deposited by the successful bidder within 21 days of the sale award.
2. Cutting in any sale or unit without the required advance payment would be considered a trespass.
3. Total payment must be paid in advance or according to the following schedule :
 - (a) Ten percent (10%) of the sale value must be paid within 21 days of the sale award.
 - (b) The 10% down payment will be credited towards the first unit cut.
 - (c) Payment for each of the following units must be made before cutting begins in that unit:

PAYMENT UNIT NUMBER	PERCENT OF TOTAL SALE VALUE
01	13.0%
02	6.8%
03	5.4%
04	9.3%
05	17.2%
06	14.5%
07	17.2%
08	16.6%
4. If no cutting takes place, the 10% down payment will not be refunded.
5. Operations on the contract issued will terminate on 06/30/2027.

SALE STATISTICS

Volumes were calculated in cubic feet using the Michigan taper model. Cubic foot volume includes all wood inside bark for the product indicated. For display purposes, cubic feet were converted to cords and MBF using a simple conversion factor, e.g. 79 cubic feet per cord and 185 cubic feet per MBF. The cubic foot volumes are precise; the cords and MBF volumes are not. Cubic foot volume cannot be directly converted to cords or boards with precision.

SALE VOLUMES

The total estimated sale volume may not equal the sum of the species/products due to the nature of statistical calculations associated with double sampling methodology.

VOLUME		STATISTICAL RANGE IN CORDS		
TOTAL CUBIC FEET	TOTAL CORDS	PERCENT ERROR	MINIMUM	MAXIMUM
169,984	2,152	10.23%	1,931	2,372

VDU VOLUMES

A VDU is a Volume Determination Unit. Volumes and their associated statistics are calculated at the VDU level and summarized to the sale level. There is often a one to one relationship between a VDU and a Payment Unit, but not always, depending on the cruise design. Refer to the VDU TO PAYMENT UNIT table.

	VOLUME			RANGE IN CORDS	
VDU	TOTAL CUBIC FEET	TOTAL CORDS	PERCENT ERROR	MINIMUM	MAXIMUM
1	31,515	399	24.22%	302	496
2	11,158	141	30.78%	98	185
3	8,487	107	53.63%	50	165
4	25,366	321	21.44%	252	390
5	29,424	372	30.23%	260	485
6	64,035	811	11.25%	719	902
TOTAL:	169,984	2,152		1,681	2,622

VDU TO PAYMENT UNIT

When a VDU is associated with more than one Payment Unit (PU), the VDU volumes are assigned to the PU based on acres of the VDU within the PU.

VDU	VDU ACRES	PU	PU ACRES
1	11.4	1	11.4
2	4.5	2	4.5
3	6.8	3	6.8
4	13.5	4	13.5
5	19.2	5	19.2
6	50.0	6	15.0
		7	17.8
		8	17.2
TOTAL:	105.4		105.4

DESCRIPTION OF TIMBER BY PU (PU)

PU	MARKET GROUP	PRODUCT	QUANTITY	UNIT	ACRES	ADVERTISE PRICE
1	Red Maple	Sawtimber	2.4	MBF	11.4	\$7,577.20
	Sugar Maple		6.4	MBF		
	Balsam Fir	Pulpwood	6	Cords		
	Mixed Hardwood		378	Cords		
	<i>Red Maple</i>		178	<i>Cords</i>		
	<i>Sugar Maple</i>		200	<i>Cords</i>		
	Mixed Spruce		6	Cords		
	<i>White Spruce</i>		6	<i>Cords</i>		
2	Sugar Maple	Sawtimber	7.0	MBF	4.5	\$3,942.50
	Mixed Hardwood	Pulpwood	66	Cords		
	<i>Paper Birch</i>		6	<i>Cords</i>		
	<i>Sugar Maple</i>		54	<i>Cords</i>		
	<i>Yellow Birch</i>		6	<i>Cords</i>		
	Quaking Aspen		64	Cords		
3	Red Maple	Sawtimber	1.3	MBF	6.8	\$3,177.90
	Sugar Maple		3.5	MBF		
	Balsam Fir	Pulpwood	8	Cords		
	Mixed Hardwood		11	Cords		
	<i>Red Maple</i>		9	<i>Cords</i>		
	<i>Sugar Maple</i>		2	<i>Cords</i>		
	Mixed Spruce		9	Cords		
	<i>White Spruce</i>		9	<i>Cords</i>		
	Quaking Aspen		73	Cords		
4	Red Maple	Sawtimber	7.1	MBF	13.5	\$5,401.65
	Balsam Fir	Pulpwood	34	Cords		
	Mixed Hardwood		169	Cords		
	<i>Black Cherry</i>		5	<i>Cords</i>		
	<i>Paper Birch</i>		127	<i>Cords</i>		
	<i>Red Maple</i>		37	<i>Cords</i>		
	Mixed Spruce		66	Cords		
	<i>Black Spruce</i>		66	<i>Cords</i>		
	Tamarack		9	Cords		
	<i>Tamarack</i>	<i>Sawtimber</i>	1.5	<i>MBF</i>		
	<i>Tamarack</i>	<i>Pulpwood</i>	6	<i>Cords</i>		
5	Balsam Fir	Pulpwood	63	Cords	19.2	\$10,061.55
	Mixed Hardwood		8	Cords		
	<i>Black Cherry</i>		3	<i>Cords</i>		
	<i>Red Maple</i>		5	<i>Cords</i>		
	Mixed Spruce		27	Cords		
	<i>Black Spruce</i>		27	<i>Cords</i>		
	Quaking Aspen		304	Cords		
	Tamarack		10	Cords		
	<i>Tamarack</i>		10	<i>Cords</i>		
6	Red Maple	Sawtimber	2.3	MBF	15.0	\$8,462.95
	Sugar Maple		37.1	MBF		
	Balsam Fir	Pulpwood	12	Cords		
	Mixed Hardwood		127	Cords		
	<i>Ironwood</i>		3	<i>Cords</i>		
	<i>Paper Birch</i>		2	<i>Cords</i>		
	<i>Red Maple</i>		17	<i>Cords</i>		
	<i>Sugar Maple</i>		104	<i>Cords</i>		
	<i>Yellow Birch</i>		1	<i>Cords</i>		
	Mixed Spruce		2	Cords		
	<i>White Spruce</i>		2	<i>Cords</i>		
7	Red Maple	Sawtimber	2.7	MBF	17.8	\$10,027.85

DESCRIPTION OF TIMBER BY PU (PU), CON'T

PU	MARKET GROUP	PRODUCT	QUANTITY	UNIT	ACRES	ADVERTISE PRICE
7 con't	Sugar Maple	Sawtimber	44.0	MBF		
	Balsam Fir	Pulpwood	15	Cords		
	Mixed Hardwood		150	Cords		
	<i>Ironwood</i>		4	<i>Cords</i>		
	<i>Paper Birch</i>		2	<i>Cords</i>		
	<i>Red Maple</i>		20	<i>Cords</i>		
	<i>Sugar Maple</i>		123	<i>Cords</i>		
	<i>Yellow Birch</i>		1	<i>Cords</i>		
	Mixed Spruce		2	Cords		
	<i>White Spruce</i>		2	<i>Cords</i>		
8	Red Maple	Sawtimber	2.6	MBF	17.2	\$9,681.15
	Sugar Maple		42.5	MBF		
	Balsam Fir	Pulpwood	14	Cords		
	Mixed Hardwood		145	Cords		
	<i>Ironwood</i>		4	<i>Cords</i>		
	<i>Paper Birch</i>		2	<i>Cords</i>		
	<i>Red Maple</i>		19	<i>Cords</i>		
	<i>Sugar Maple</i>		119	<i>Cords</i>		
	<i>Yellow Birch</i>		1	<i>Cords</i>		
	Mixed Spruce		2	Cords		
	<i>White Spruce</i>		2	<i>Cords</i>		
TOTAL:			158.9	MBF		
TOTAL:			1,780	Cords		

Sale Specific Conditions & Requirements

Sale Name: Aspen and Maple

Sale Number: 32-014-23 Seq#: 1

1 - Sale Area

1.2 - Boundaries

1.2.1 - Painted boundaries (9/19)

The sale boundary and Payment Unit boundaries are marked and identified by blue, red, and yellow paint. Exterior sale boundary lines against private are marked with blue paint. Exterior sale boundary lines against state are marked with red paint. Interior Payment Unit boundaries are marked with yellow paint. The painted boundary line trees are not Included Timber and are to be protected unless marked with orange paint. Yellow painted trees designating an interior Payment Unit boundary are only to be cut when all surrounding Payment Units have been paid.

2 - Timber Specifications

2.1 - Included Timber

2.1.1 - Clearcut unit(s) with unmerchantable trees (6/14)

Within Payment Unit(s) 2 and 5, cut all trees that are two (2) inches or more at DBH.

Within Payment Unit(s) 1, cut all trees that are two (2) inches or more at DBH, do not cut oak and yellow birch.

Within Payment Unit(s) 3, cut all trees that are two (2) inches or more at DBH, do not cut pine, oak, and yellow birch.

Within Payment Unit(s) 4, cut all trees that are two (2) inches or more at DBH, do not cut cedar and yellow birch.

2.1.3 - Cut tree marked unit(s) (12/08)

Within Payment Unit(s) 6-8, all trees are designated for cutting when marked with orange paint above and below stump height, regardless of merchantability. In addition, cut all merchantable spruce and fir.

2.2 - Utilization

2.2.4 - Skidding length (2/14)

Skidding of unlimbed tops or lengths over 17 feet within Payment Units 6-8 is not permissible unless approved by the Unit Manager or his/her representative.

3 - Payments

3.4 - Damaged Timber

3.4.1 - Damaged timber (7/16)

General Condition and Requirement 3.4 Damaged Timber, defines liquidated damages for undesignated live merchantable trees which are cut or injured. In addition, extreme care should be taken to avoid damage to tree seedlings and saplings within Payment Units 6-8.

No damage is acceptable to undesignated live merchantable trees. Within the sale area, if more than 5% of trees (> 4.5 " DBH) within a specified area of the sale are damaged, liquidated damages will be assessed for all trees damaged. Rates will be in accordance with General Condition and Requirement 3.4 Damaged Timber.

4 - Transportation

4.1 - Construction

4.1.3 - Slash and earthen piles (8/04)

Piles or windrows of earth along roads and landings that have been widened or constructed shall be leveled. Slash from road maintenance or construction, including stumps, shall be dispersed throughout the sale.

4.1.6 - Road construction (1/09)

Construction of new roads or improvements of existing roads shall be done in such a way as to minimize the environmental and visual impacts. Merchantable trees shall be cut and utilized unless otherwise directed. Non-merchantable trees shall be

severed and laid flat on the ground. Slash shall be scattered, and not left in windrows and kept a minimum of 10 feet back from the road edge. Stumps shall be set upright, not left on edge, and be moved at least 10 feet away from the road edge. Disturbed soil shall be feathered into the woods and not left in berms or windrows.

4.1.7 - Road closure (10/11)

All new roads built into the sale must be blocked to vehicle traffic upon completion of the sale. Overgrown roads that are reopened shall be considered new roads. In general, this will require constructing a four (4') foot high berm of stumps and logs covered with earth. Contact the sale administrator for specific details of design and placement.

4.2 - Maintenance

4.2.2 - Fill material (4/07)

To maintain roads, fill material may be needed in areas where "holes" exist or may be expected to develop. This fill material should be placed before trucking begins. Depending on the time of year, multiple areas may require fill material for access across the sale area. Contact the sale administrator regarding the availability of onsite sand or gravel from adjacent State-owned lands.

4.2.4 - Grading (10/16)

For completion of the sale, state forest roads must be graded. In general, this will require a road grader or bull dozer to shape up the roads after forest products have been hauled off site. This includes cleaning of drainage areas, grading, crowning and filling with gravel, if necessary. The grading equipment to be used must be approved by the Unit Manager or his/her representative.

5 - Operations

5.1 - Notification

5.1.1 - Pre-sale conference (10/16)

A pre-sale conference between the Purchaser and sale administrator is required prior to beginning any operations. The Unit Manager or his/her representative must be contacted at least 3 business days in advance to schedule the conference.

5.2 - Conduct of Operations

5.2.1 - Slash

5.2.1.11 - Slash for reforestation (3/21)

To facilitate reforestation, Payment Units 1-5 shall be left with slash evenly distributed. Bunched tops within the cutting area shall be broken up and scattered. Stumps shall be cut low to the ground. Processing sites shall not be left with a compacted layer of slash; tops from these sites shall be hauled back into the cut area and scattered.

5.2.2 - Hazard Trees/Snags

5.2.2.1 - Den trees (10/16)

Obvious hollow and/or den trees shall be protected and left standing unless they are a safety hazard.

5.2.3 - Operating Restrictions

5.2.3.1 - Operating restrictions (9/11)

Within Payment Unit(s) 4, unless changed by written agreement, cutting and skidding are limited to frozen winter conditions only. This restriction is due to poorly drained, saturated ground within the Payment Unit.

5.2.3.3 - Bark slippage restriction (3/09)

Within Payment Unit(s) 6-8, unless changed by written agreement, cutting and skidding are not permitted during the period of April 15 to July 15. This restriction is because of bark slippage.

5.2.32 - Decking/landing restoration (9/13)

All decking and landing areas must have the surface area restored to a condition equal to or better than before. This is to ensure the proper regeneration of the stand. Wood debris, chips and "cookies" from trimmings must be removed or scattered away from landing and loading areas and may not be windrowed on the edge.

5.2.37 - No decking areas (12/08)

No decking is allowed within 50 feet of County roads without permission of Marquette County and Unit Manager or his/her

representative.

5.2.38 - No decking against live trees (2/04)

Cut products may not be decked against unmarked or designated leave trees.

5.4 - Soil Protection

5.4.1 - Rutting restriction, general (7/16)

Operations are to cease immediately if equipment and weather conditions result in rutting of roads and/or skid trails which is 12 inches or greater in depth and 50 feet in length. The Unit Manager or his/her representative may restrict hauling and/or skidding if ruts exceed the specified depth. With the Unit Manager or his/her representative's approval, the Purchaser may return to the area when the risk of rutting has decreased.

5.4.2 - Skid trails (2/04)

Skid trails up and down slopes should be avoided. If however this is unavoidable, these trails will be left in a non-erodible condition using water bars, logs, and slash. Placing of slash on these skid trails while logging is ongoing may alleviate need for any further action. At the direction of the sale administrator, seed, fertilizer, and mulch may also be required.

5.8 - Protection of Endangered Species

5.8.5 - Protection of raptor nests (3/13)

All trees with raptor nests will be protected if found during harvesting operations. Notification will be made to the Unit Manager or his/her representative who will notify the Wildlife Biologist so an on-site evaluation and recommendation can be made, if necessary.

6 - Safety and Fire Prevention

6.2 - Signing

6.2.1 - Road posting (10/20)

The Purchaser is responsible for posting and maintaining caution signs on any county roads and/or forest access roads adjacent to active sale areas prior to beginning operations. The road must be posted from both directions at appropriate distances from the sale area to warn of logging activity and truck traffic. Signs must be removed when harvest operations are suspended or completed. The Purchaser will provide these signs.

**TIMBER SALE MAP**

This information provided by authority of Part 525, 1994 PA 451, as amended.

Sale Number

32-014-23

Date

09/19/2023

Forest Management Unit

Gwynn Mgt Unit

County

Marquette

Mapped By: Christian Gabler

Cruised By: E. Brolin/C. Gabler

Scale

1:15,840

Page

1

Of

2

Township
48N / 49NRange
28W

Section(s) and

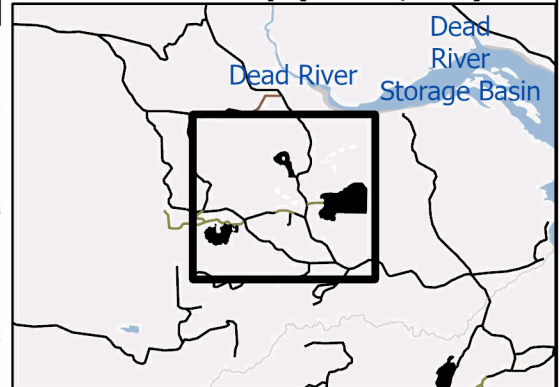
Subdivision(s) Sec. 12 W1/2NE; Sec. 2 NWNE; Sec. 3 NE; Sec. 35 N1/2SW,NESE,S1/2SE;

Cover Type

A = Aspen	J = Jack Pine	O = Oak	U = Upland Brush
B = Paper Birch	K = Rock	P = Lowland Poplar	UM = Upland Mix Forest
C = Cedar	L = Lowland Brush	Q = Mixed Swamp Conifer	V = Bog or Marsh
D = Treed Bog	LM = Lowland Mix Forest	R = Red Pine	W = White Pine
E = Swamp Hardwoods	M = Maple, Beech, Birch	S = Black Spruce	X = Non Stocked
F = Spruce/Fir	MC = Mixed Conifer	T = Tamarack	Y = Sand
G = Grass	MD = Mixed Deciduous		Z = Water
H = Hemlock	N = Marsh		

Density

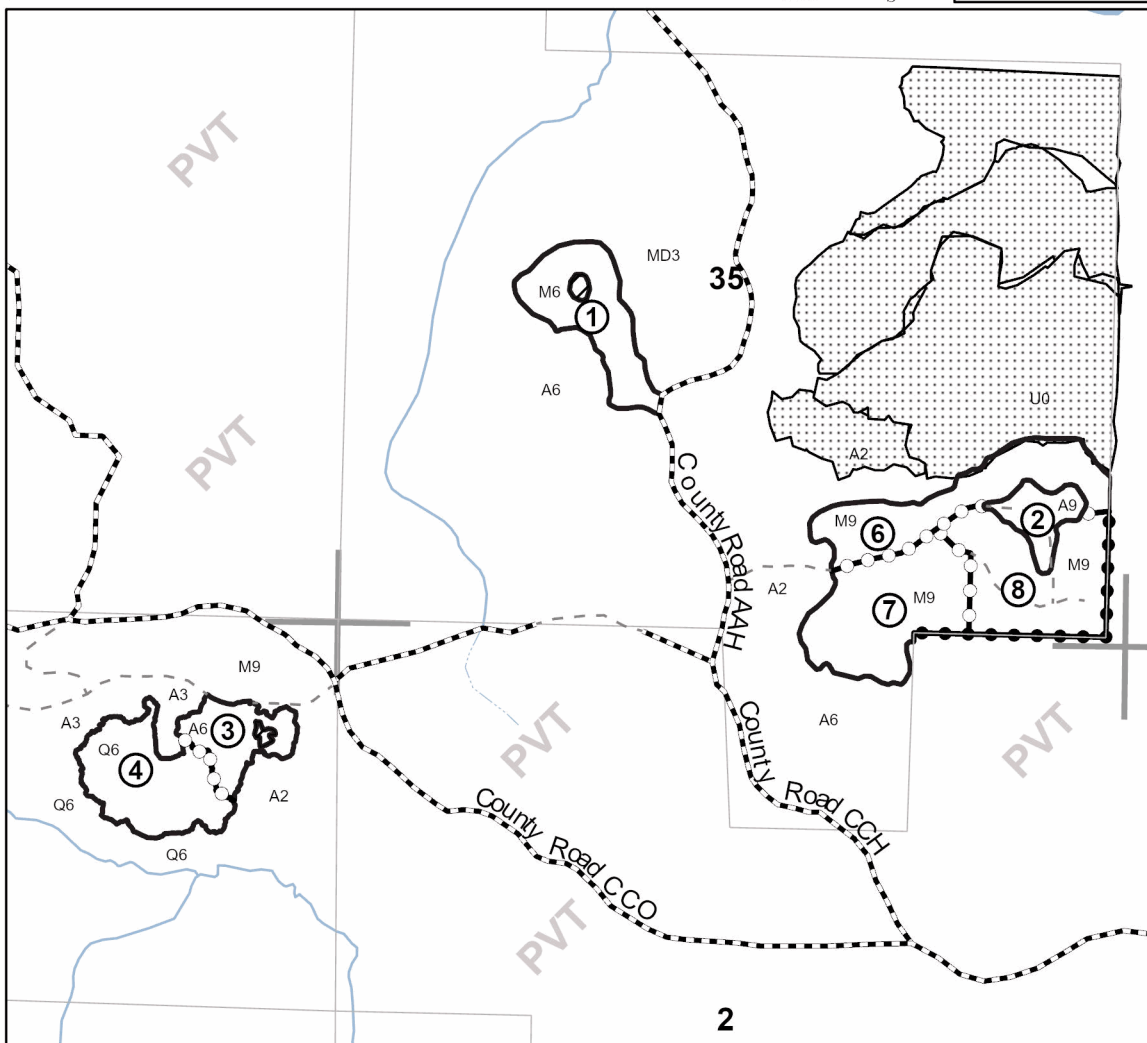
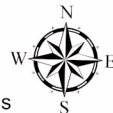
0 = Non Stocked	5 = Pole Timber Medium
1 = Seedling Sapling Poor	6 = Pole Timber Well
2 = Seedling Sapling Medium	7 = Saw Timber Poor
3 = Seedling Sapling Well	8 = Saw Timber Medium
4 = Pole Timber Poor	9 = Saw Timber Well

Locator Map (1:100,000)

PU #	Acres	PU #	Acres
1	11.4	5	19.2
2	4.5	6	15
3	6.8	7	17.8
4	13.5	8	17.2

**Aspen and
Maple****105.4 Acres**

0 0.25 0.5 1 Miles

**Legend**

- Against State (Red)
- Payment Unit (Yellow)
- Private Line (Blue)
- ▨ Nearby Timber Sale
- MIRIS Section Corner
- Intermittent Stream
- Perennial River
- State Boundary
- ▨ Retention Areas
- County Roads
- Forest Access Road

Use QR Code to open Map in App



**TIMBER SALE MAP**

This information provided by authority of Part 525, 1994 PA 451, as amended.

Sale Number

32-014-23

Date

09/19/2023

Forest Management Unit

Gwynn Mgt Unit

County

Marquette

Mapped By: Christian Gabler

Cruised By: E. Brolin

Scale

1:10,000

Page

2

Of

2Township
48N / 49NRange
28W

Section(s) and

Subdivision(s) Sec. 12 W1/2NE; Sec. 2 NWNE; Sec. 3 NE; Sec. 35 N1/2SW,NESE,S1/2SE;

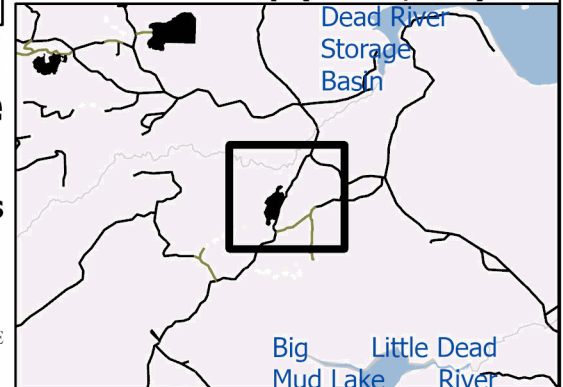
Cover Type

A = Aspen	J = Jack Pine	O = Oak	U = Upland Brush
B = Paper Birch	K = Rock	P = Lowland Poplar	UM = Upland Mix Forest
C = Cedar	L = Lowland Brush	Q = Mixed Swamp Conifer	V = Bog or Marsh
D = Treed Bog	LM = Lowland Mix Forest	R = Red Pine	W = White Pine
E = Swamp Hardwoods	M = Maple, Beech, Birch	S = Black Spruce	X = Non Stocked
F = Spruce/Fir	MC = Mixed Conifer	T = Tamarack	Y = Sand
G = Grass	MD = Mixed Deciduous		Z = Water
H = Hemlock	N = Marsh		

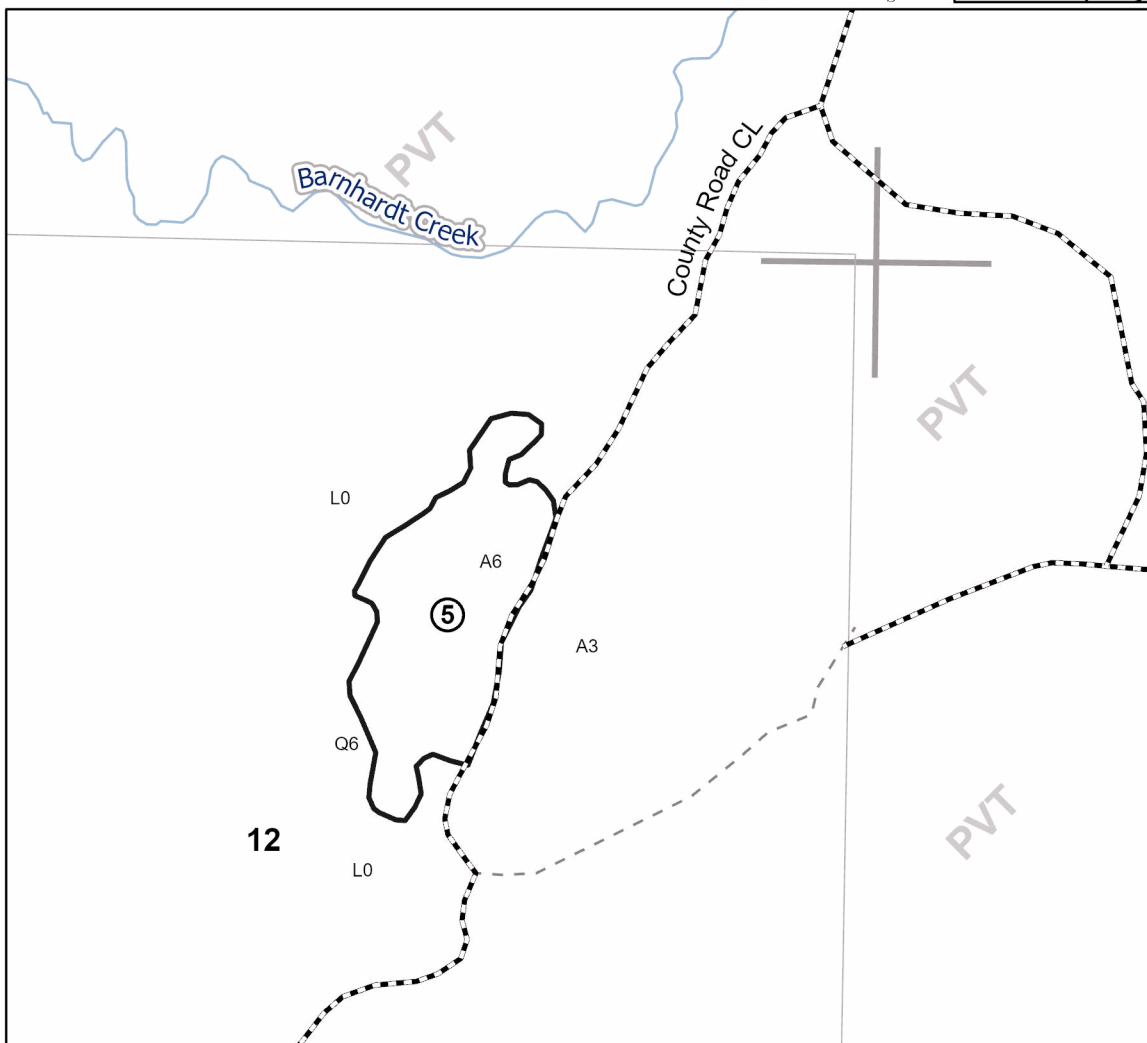
Density

0 = Non Stocked	5 = Pole Timber Medium
1 = Seedling Sapling Poor	6 = Pole Timber Well
2 = Seedling Sapling Medium	7 = Saw Timber Poor
3 = Seedling Sapling Well	8 = Saw Timber Medium
4 = Pole Timber Poor	9 = Saw Timber Well

PU #	Acres	PU #	Acres
1	11.4	5	19.2
2	4.5	6	15
3	6.8	7	17.8
4	13.5	8	17.2

**Aspen and
Maple****105.4 Acres****Locator Map (1:100,000)**

0 0.15 0.3 0.6 Miles

**Legend**

- Against State (Red)
- MIRIS Section Corner
- Perennial River
- - - County Roads
- - - Forest Access Road

Use QR Code to open Map in App

