



**DEPARTMENT OF NATURAL RESOURCES
STATE OF MICHIGAN
TIMBER SALE PROSPECTUS #7384**

SCHEDULED SALE DATE AND TIME: **9:00 a.m. (local time) on April 11, 2024.**

LOCATION: **PIGEON RIVER COUNTRY MGMT UNIT, PO BOX 456, 9966 TWIN LAKES ROAD, VANDERBILT, MI**

CONTACT NAME: Mark Monroe

PHONE NUMBER: (989) 983-4101

PROSPECTUS NOTE: The bidder is advised to inspect the sale area and review the location, estimated volumes, operating costs and contract terms of proposed sales. Please be aware that some landowners may request 60 days or more notice for access across their land.

Notice is hereby given that bids will be received by the Unit Manager, PIGEON RIVER COUNTRY MANAGEMENT UNIT, for certain timber on the following described lands:

Around the Clock Again Aspen (53-003-24) / T32N, R02W, SEC. 14, NW,W1/2NE,NESW,NWSE.
Otsego County, Advertised Price \$52,332.75, 74.4 Acres, Aspen, Hardwood.

TIMBER SALE INFORMATION

Around the Clock Again Aspen (53-003-24)
T32N, R02W, SEC. 14.
Otsego County (Advertised Price \$52,332.75)

A timber sale contract for this lump sum, sealed bid timber sale will be awarded to the responsible bidder offering the highest sealed bid price. All units of volume listed below were estimated using the Inventory Manager computer program and the new Michigan taper model. Bids must be at or above the following advertised price for each product and species:

<u>PRODUCTS & SPECIES</u>	<u>ESTIMATED UNITS*</u>	<u>ADVERTISED PRICE</u>
Sawtimber		
B. T. Aspen	134.1 MBF	\$ 49.00 / MBF
Pulpwood		
Jack Pine	49 Cords	\$ 12.90 / Cord
Mixed Aspen	1,881 Cords	\$ 23.10 / Cord
Red Maple	93 Cords	\$ 15.25 / Cord
White Pine	12 Cords	\$ 21.70 / Cord

* The total volume is statistically estimated within plus (+) or minus (-) 25.40 percent. There are an estimated 2,349 cords on this timber sale, plus or minus 597 cords at the 95% confidence level. The estimated units are final and not subject to adjustment. Prospective bidders are urged to examine this timber and to make their own estimates of quantity and quality.

BOND AND PAYMENT SCHEDULE:

1. A bond in the amount of \$5,233.28 to insure faithful performance of the conditions of the contract will be deposited by the successful bidder within 21 days of the sale award.
2. Cutting in any sale or unit without the required advance payment would be considered a trespass.
3. Total payment must be paid in advance or according to the following schedule :
 - (a) Ten percent (10%) of the sale value must be paid within 21 days of the sale award.
 - (b) The 10% down payment will be credited towards the first unit cut.
 - (c) Payment for each of the following units must be made before cutting begins in that unit:

PAYMENT UNIT NUMBER	PERCENT OF TOTAL SALE VALUE
01	26.6%
02	26.5%
03	22.5%
04	24.2%
05	0.2%
4. If no cutting takes place, the 10% down payment will not be refunded.
5. Operations on the contract issued will terminate on 06/30/2027.

SALE STATISTICS

Volumes were calculated in cubic feet using the Michigan taper model. Cubic foot volume includes all wood inside bark for the product indicated. For display purposes, cubic feet were converted to cords and MBF using a simple conversion factor, e.g. 79 cubic feet per cord and 185 cubic feet per MBF. The cubic foot volumes are precise; the cords and MBF volumes are not. Cubic foot volume cannot be directly converted to cords or boards with precision.

SALE VOLUMES

The total estimated sale volume may not equal the sum of the species/products due to the nature of statistical calculations associated with double sampling methodology.

VOLUME		PERCENT ERROR	STATISTICAL RANGE IN CORDS	
TOTAL CUBIC FEET	TOTAL CORDS		MINIMUM	MAXIMUM
185,606	2,349	25.40%	1,753	2,946

VDU VOLUMES

A VDU is a Volume Determination Unit. Volumes and their associated statistics are calculated at the VDU level and summarized to the sale level. There is often a one to one relationship between a VDU and a Payment Unit, but not always, depending on the cruise design. Refer to the VDU TO PAYMENT UNIT table.

	VOLUME			RANGE IN CORDS	
VDU	TOTAL CUBIC FEET	TOTAL CORDS	PERCENT ERROR	MINIMUM	MAXIMUM
83	184,807	2,339	19.91%	1,873	2,805
92	798	10	65.09%	4	17
TOTAL:	185,606	2,349		1,877	2,822

VDU TO PAYMENT UNIT

When a VDU is associated with more than one Payment Unit (PU), the VDU volumes are assigned to the PU based on acres of the VDU within the PU.

VDU	VDU ACRES	PU	PU ACRES
83	71.6	1	19.1
		2	19.0
		3	16.1
		4	17.4
92	2.8	5	2.8
TOTAL:	74.4		74.4

DESCRIPTION OF TIMBER BY PU (PU)

PU	MARKET GROUP	PRODUCT	QUANTITY	UNIT	ACRES	ADVERTISE PRICE
1	B. T. Aspen	Sawtimber	35.7	MBF	19.1	\$13,918.50
	Jack Pine	Pulpwood	11	Cords		
	Mixed Aspen		502	Cords		
	<i>B. T. Aspen</i>		455	<i>Cords</i>		
	<i>Quaking Aspen</i>		47	<i>Cords</i>		
	Red Maple		24	Cords		
	White Pine		3	Cords		
2	B. T. Aspen	Sawtimber	35.6	MBF	19.0	\$13,846.65
	Jack Pine	Pulpwood	10	Cords		
	Mixed Aspen		499	Cords		
	<i>B. T. Aspen</i>		453	<i>Cords</i>		
	<i>Quaking Aspen</i>		46	<i>Cords</i>		
	Red Maple		25	Cords		
	White Pine		3	Cords		
3	B. T. Aspen	Sawtimber	30.2	MBF	16.1	\$11,752.55
	Jack Pine	Pulpwood	9	Cords		
	Mixed Aspen		423	Cords		
	<i>B. T. Aspen</i>		384	<i>Cords</i>		
	<i>Quaking Aspen</i>		39	<i>Cords</i>		
	Red Maple		21	Cords		
	White Pine		3	Cords		
4	B. T. Aspen	Sawtimber	32.6	MBF	17.4	\$12,686.05
	Jack Pine	Pulpwood	9	Cords		
	Mixed Aspen		457	Cords		
	<i>B. T. Aspen</i>		415	<i>Cords</i>		
	<i>Quaking Aspen</i>		42	<i>Cords</i>		
	Red Maple		23	Cords		
	White Pine		3	Cords		
5	Jack Pine	Pulpwood	10	Cords	2.8	\$129.00
TOTAL:			134.1	MBF		
TOTAL:			2,035	Cords		

Sale Specific Conditions & Requirements

Sale Name: Around the Clock Again Aspen

Sale Number: 53-003-24 Seq#: 1

1 - Sale Area

1.2 - Boundaries

1.2.1 - Painted boundaries (9/19)

The sale boundary and Payment Unit boundaries are marked and identified by red and yellow paint. Exterior sale boundary lines against state are marked with red paint. Interior Payment Unit boundaries are marked with yellow paint. Retention patches are marked with a red "X"; no harvesting activities may occur within these areas. Red painted boundary line trees are not Included Timber and are to be protected. Yellow painted trees designating an interior Payment Unit boundary are only to be cut when all surrounding Payment Units have been paid.

2 - Timber Specifications

2.1 - Included Timber

2.1.1 - Clearcut unit(s) with unmerchantable trees (6/14)

Within Payment Unit(s) 1-4, cut all trees that are two (2) inches or more at DBH, except do not cut white pine that are ten (10) inches or more at DBH, red pine, red oak, white oak, paper birch, or any trees marked with green paint.

Within Payment Unit 5, cut all trees that are two (2) inches or more at DBH, except do not cut oak or any trees marked with green paint.

3 - Payments

3.4 - Damaged Timber

3.4.1 - Damaged timber (7/16)

General Condition and Requirement 3.4 Damaged Timber, defines liquidated damages for undesignated live merchantable trees which are cut or injured. No damage is acceptable to undesignated live merchantable trees. Within the Sale Area, if more than 10% of designated leave trees (> 4.5" DBH) within a specified area of the sale are damaged, liquidated damages will be assessed for all trees damaged. Rates will be in accordance with General Condition and Requirement 3.4 Damaged Timber.

In addition, extreme care should be taken to avoid damage to red oak & white oak seedlings and saplings.

3.6 - Payment Unit Cutting Schedule

3.6.8 - Operating period (5/16)

Once cutting begins, operations must continue until all Payment Units are completed.

4 - Transportation

4.1 - Construction

4.1.3 - Slash and earthen piles (8/04)

Piles or windrows of earth along roads and landings that have been widened or constructed shall be leveled. Slash from road maintenance or construction, including stumps, shall be dispersed throughout the sale.

4.1.12 - No new roads (1/12)

No new roads will be permitted in any Payment Unit. All operations are limited to existing roads.

4.2 - Maintenance

4.2.4 - Grading (10/16)

For completion of the sale, and if deemed necessary by the Timber Sale Administrator, state forest roads must be graded. In general, this will require a road grader or bulldozer to shape up the roads after forest products have been hauled off site. The

grading equipment to be used must be approved by the Unit Manager or his/her representative.

4.2.5 - Two wheel drive condition (2/04)

All existing trail roads on and adjacent to the sale area must be passable by two-wheel drive traffic for the duration of the sale.

4.4 - Access

4.4.3 - Access gate (12/08)

The access gate must be locked at the completion of each day unless otherwise approved by the Unit Manager or his/her representative.

5 - Operations

5.2 - Conduct of Operations

5.2.2 - Hazard Trees/Snags

5.2.2.1 - Den trees (10/16)

Obvious hollow and/or den trees shall be protected and left standing unless they are a safety hazard.

5.2.3 - Operating Restrictions

5.2.3.1 - Operating restrictions (9/11)

Within Payment Unit(s) 1-5, cutting, skidding, chipping, and hauling are limited to the period of December 1 to April 1. This restriction is in place to reduce the impacts of elk browsing. No exceptions will be granted.

5.2.4 - Dead and Down Creation

5.2.4.2 - Dead and down creation, hare and grouse (1/14)

To improve habitat for snowshoe hare, grouse, and other species, the Purchaser is to leave one brush pile on the ground for every two acres, within Payment Units 1-4. Brush piles will consist of slash from cut trees. They should be scattered throughout the sale or positioned per the Sale Administrator's instructions.

5.2.4.3 - Dead and down creation, dead trees (6/07)

Except as provided for in General Condition and Requirement 5.2.2, no dead trees, standing or down, are to be cut, skidded, or processed.

5.2.4.7 - Dead and down creation: hare, grouse, deer and other species (5/15)

To improve horizontal cover habitat for snowshoe hare, grouse, deer, and other species, the Purchaser is to push over all trees marked with an orange X. These trees should be tipped over with the root ball still attached so the base of the tree is suspended off the ground. The crown of the fallen tree should be at or near ground level after it is pushed over.

5.2.29 - Shrub protection (1/20)

Do not cut or damage hawthorn or juneberry. These woody-shrub plants are highly beneficial to various wildlife species.

5.2.31 - Landing locations (9/13)

The recommended landing area is within Payment Unit 5. Maintained wildlife openings may be used as additional landings, but all wood must be decked along the edges of the openings and within the boundary of the Sale Area. Landings must be confined to these designated sites, unless otherwise authorized by the Unit Manager or his/her representative.

5.2.32 - Decking/landing restoration (9/13)

All decking and landing areas must have the surface area restored to a condition equal to or better than before. This is to ensure the proper regeneration of the stand. Wood debris, chips and "cookies" from trimmings must be removed or scattered away from landing and loading areas and may not be windrowed on the edge.

5.2.38 - No decking against live trees (2/04)

Cut products may not be decked against unmarked or designated leave trees.

5.4 - Soil Protection

5.4.1 - Rutting restriction, general (7/16)

Operations are to cease immediately if equipment and weather conditions result in rutting of roads and/or skid trails which is 12 inches or greater in depth and 25 feet in length. The Unit Manager or his/her representative may restrict hauling and/or skidding if ruts exceed the specified depth. With the Unit Manager or his/her representative's approval, the Purchaser may return to the area when the risk of rutting has decreased.

5.5 - Protection of Improvements

5.5.3 - Protection of improvements detail (10/13)

The following are specific protection measures for this sale. An old railroad grade is within the Sale Area and travels southwest to northeast along the east side of Payment Units 3 and 4, see Timber Sale Map for the approximate location of the railroad grade. To protect the integrity of the old grade, harvesting operations should run parallel to the elevated grade and ditches. Equipment crossings will be limited to only a few crossings per Payment Unit. Contact the Sale Administrator for further instructions.

5.8 - Protection of Endangered Species

5.8.3 - Red shoulder hawk or goshawk (1) (2/16)

In the event that an active red shoulder hawk or goshawk nest is found, the contract may be amended to protect the nest site until the nest is determined to be inactive. The value of the trees in this excluded area will be refunded or credited to the Purchaser. The nest will be buffered with a five-chain radius (eight acre) protection area, centered on the nest tree, in which there will be no cutting or new roads constructed. Avoid human disturbance, including loading and skidding, in the protection area.

An additional zone of five chains (ten chains centered on the active nest tree) will be established in which there is no management activity from March 15 to July 15 (NLP). Limit biomass harvesting and chipping operations within this ten-chain zone, retain the maximum one-third of residues per the Woody Biomass Harvesting Guidelines (Michigan DNR 2010). Nests determined to be inactive will be protected with a one-chain no-harvest buffer.

6 - Safety and Fire Prevention

6.2 - Signing

6.2.1 - Road posting (10/20)

The Purchaser is responsible for posting and maintaining caution signs on Road 71 prior to beginning operations. The road must be posted at appropriate distances from the sale area to warn of logging activity and truck traffic. Signs must be removed when harvest operations are suspended or completed. The Purchaser will provide these signs.

**TIMBER SALE MAP**

This information provided by authority of Part 525, 1994 PA 451, as amended.

Sale Number
53-003-24Date
10/05/2023

Forest Management Unit	County	Mapped By: Rekowski
Pigeon River Country Mgt Unit	Otsego	Cruised By: Rekowski

Scale	Page	Of
1:10,000	1	1

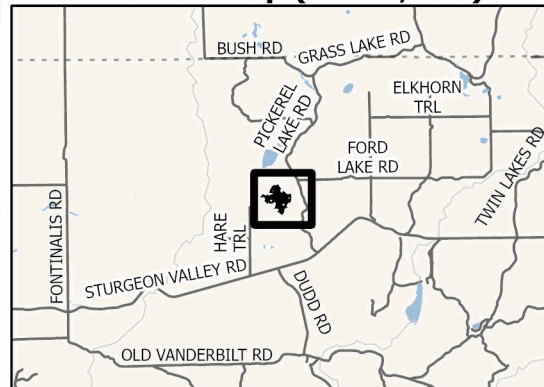
Township	Range	Section(s) and Subdivision(s)
32N	02W	Sec. 14 NW,W1/2NE,NESW,NWSE;

Cover Type

A = Aspen	J = Jack Pine	O = Oak	U = Upland Brush
B = Paper Birch	K = Rock	P = Lowland Poplar	UM = Upland Mix Forest
C = Cedar	L = Lowland Brush	Q = Mixed Swamp Conifer	V = Bog or Marsh
D = Treed Bog	LM = Lowland Mix Forest	R = Red Pine	W = White Pine
E = Swamp Hardwoods	M = Maple, Beech, Birch	S = Black Spruce	X = Non Stocked
F = Spruce/Fir	MC = Mixed Conifer	T = Tamarack	Y = Sand
G = Grass	MD = Mixed Deciduous		Z = Water
H = Hemlock	N = Marsh		

Density

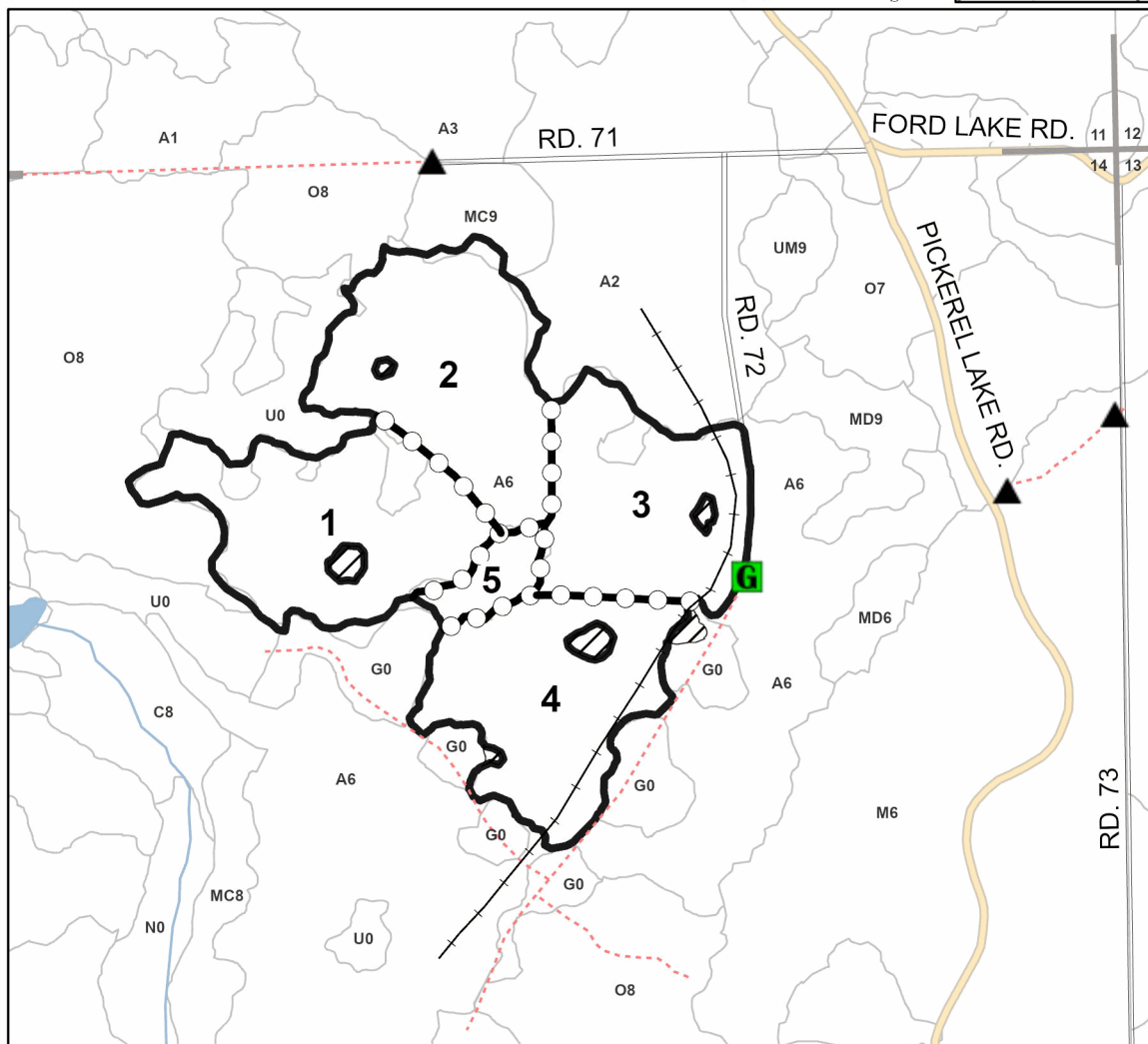
0 = Non Stocked	5 = Pole Timber Medium
1 = Seedling Sapling Poor	6 = Pole Timber Well
2 = Seedling Sapling Medium	7 = Saw Timber Poor
3 = Seedling Sapling Well	8 = Saw Timber Medium
4 = Pole Timber Poor	9 = Saw Timber Well

Locator Map (1:200,000)**PU # Acres**

1	19.1
2	19
3	16.1
4	17.4
5	2.8

**Around the
Clock Again
Aspen****74.4 Acres**

0 0.15 0.3 0.6 Miles

**Legend**

- Against State (Red)
- Payment Unit (Yellow)
- Retention Areas (Red)
- Stand
- Old railroad grade
- Gravel Road
- County Road - Seasonal
- Secondary Forest Road
- Administrative Access Only
- Non-DNR Road
- Berm
- Gate
- Perennial River
- MIRIS Section Corner

Use QR Code to open Map in App

