



**DEPARTMENT OF NATURAL RESOURCES
STATE OF MICHIGAN
TIMBER SALE PROSPECTUS #7434**

SCHEDULED SALE DATE AND TIME: 3:00 p.m. (local time) on July 18, 2024.

LOCATION: NEWBERRY MGMT UNIT, PO BOX 428, 5666 S STATE HWY M 123, NEWBERRY, MI 49868.

CONTACT NAME: Keith Magnusson

PHONE NUMBER: (906) 291-0120

PROSPECTUS NOTE: The bidder is advised to inspect the sale area and review the location, estimated volumes, operating costs and contract terms of proposed sales. Please be aware that some landowners may request 60 days or more notice for access across their land.

Notice is hereby given that bids will be received by the Unit Manager, NEWBERRY MANAGEMENT UNIT, for certain timber on the following described lands:

Sting Box Mix (42-026-23) / T48N, R08W, SEC. 4 , S1/2SW,SWSE.

T48N, R08W, SEC. 5 , SESW,SESE.

T48N, R08W, SEC. 8 , E1/2NW,N1/2NE.

Luce County, Advertised Price \$36,639.20, 83.2 Acres, Hardwood, Spruce/Fir/Tamarack.

SALE NOTE: Road maintenance may be needed on this sale. See Sale Spec 4.2.3 for details.

Timber harvesting in Payment Unit 1 must be completed before significant aspen sprouting occurs in that Payment Unit to minimize damage to the new regeneration.

It is recommended, but not required, that within Payment Units 1-4, harvesting occur during dry summer or frozen winter conditions because of low ground areas within the Payment Units.

The GEM Hunting trail is shown on the Timber Sale Map. See Sale Spec 5.2.40 for restrictions.

The snowmobile trail and is shown on the Timber Sale Map. See Sale 5.2.41 for additional information/restrictions.

A recreation site such as a trail, pathway, or campground is within the sale area or the vicinity. Certain restrictions/specifications may be applicable including time restrictions.

TIMBER SALE INFORMATION

Sting Box Mix (42-026-23)

T48N, R08W, SEC. 4; T48N, R08W, SEC. 5; T48N, R08W, SEC. 8.
Luce County (Advertised Price \$36,639.20)

SALE NOTE: Road maintenance may be needed on this sale. See Sale Spec 4.2.3 for details.

Timber harvesting in Payment Unit 1 must be completed before significant aspen sprouting occurs in that Payment Unit to minimize damage to the new regeneration.

It is recommended, but not required, that within Payment Units 1-4, harvesting occur during dry summer or frozen winter conditions because of low ground areas within the Payment Units.

The GEM Hunting trail is shown on the Timber Sale Map. See Sale Spec 5.2.40 for restrictions.

The snowmobile trail and is shown on the Timber Sale Map. See Sale 5.2.41 for additional information/restrictions.

A recreation site such as a trail, pathway, or campground is within the sale area or the vicinity. Certain restrictions/specifications may be applicable including time restrictions.

A timber sale contract for this lump sum, sealed bid timber sale will be awarded to the responsible bidder offering the highest sealed bid price. All units of volume listed below were estimated using the Inventory Manager computer program and the new Michigan taper model. Bids must be at or above the following advertised price for each product and species:

<u>PRODUCTS & SPECIES</u>	<u>ESTIMATED UNITS*</u>	<u>ADVERTISED PRICE</u>
Sawtimber		
Red Maple	78.9 MBF	\$ 71.00 / MBF
Yellow Birch	12.4 MBF	\$ 88.00 / MBF
Pulpwood		
Balsam Fir	239 Cords	\$ 11.85 / Cord
Hemlock	101 Cords	\$ 4.25 / Cord
Mixed Aspen	105 Cords	\$ 28.90 / Cord
Mixed Hardwood	1,213 Cords	\$ 13.70 / Cord
Mixed Spruce	476 Cords	\$ 6.80 / Cord
N. White Cedar	364 Cords	\$ 3.35 / Cord
Paper Birch	99 Cords	\$ 4.10 / Cord
White Pine	100 Cords	\$ 21.70 / Cord

* The total volume is statistically estimated within plus (+) or minus (-) 18.75 percent. There are an estimated 3,050 cords on this timber sale, plus or minus 572 cords at the 95% confidence level. The estimated units are final and not subject to adjustment. Prospective bidders are urged to examine this timber and to make their own estimates of quantity and quality.

BOND AND PAYMENT SCHEDULE:

1. A bond in the amount of \$1,831.96 to insure faithful performance of the conditions of the contract will be deposited by the successful bidder within 21 days of the sale award.
2. Cutting in any sale or unit without the required advance payment would be considered a trespass.
3. Total payment must be paid in advance or according to the following schedule:
 - (a) Ten percent (10%) of the sale value must be paid within 21 days of the sale award.
 - (b) The 10% down payment will be credited towards the first unit cut.
 - (c) Payment for each of the following units must be made before cutting begins in that unit:

<u>PAYMENT UNIT NUMBER</u>	<u>PERCENT OF TOTAL SALE VALUE</u>
01	42.8%
02	16.3%
03	36.9%
04	4.0%

4. If no cutting takes place, the 10% down payment will not be refunded.
5. Operations on the contract issued will terminate on 06/30/2028.

SALE STATISTICS

Volumes were calculated in cubic feet using the Michigan taper model. Cubic foot volume includes all wood inside bark for the product indicated. For display purposes, cubic feet were converted to cords and MBF using a simple conversion factor, e.g. 79 cubic feet per cord and 185 cubic feet per MBF. The cubic foot volumes are precise; the cords and MBF volumes are not. Cubic foot volume cannot be directly converted to cords or boards with precision.

SALE VOLUMES

The total estimated sale volume may not equal the sum of the species/products due to the nature of statistical calculations associated with double sampling methodology.

VOLUME			STATISTICAL RANGE IN CORDS	
TOTAL CUBIC FEET	TOTAL CORDS	PERCENT ERROR	MINIMUM	MAXIMUM
240,951	3,050	18.75%	2,478	3,622

VDU VOLUMES

A VDU is a Volume Determination Unit. Volumes and their associated statistics are calculated at the VDU level and summarized to the sale level. There is often a one to one relationship between a VDU and a Payment Unit, but not always, depending on the cruise design. Refer to the VDU TO PAYMENT UNIT table.

VDU	VOLUME		PERCENT ERROR	RANGE IN CORDS	
	TOTAL CUBIC FEET	TOTAL CORDS		MINIMUM	MAXIMUM
17	77,858	986	13.45%	853	1,118
23	42,560	539	36.43%	342	735
32	12,961	164	34.75%	107	221
34	107,572	1,362	18.75%	1,106	1,617
TOTAL:	240,951	3,050		2,409	3,691

VDU TO PAYMENT UNIT

When a VDU is associated with more than one Payment Unit (PU), the VDU volumes are assigned to the PU based on acres of the VDU within the PU.

VDU	VDU ACRES	PU	PU ACRES
17	37.1	1	37.1
23	9.0	2	9.0
32	5.2	4	5.2
34	31.9	3	31.9
TOTAL:	83.2		83.2

DESCRIPTION OF TIMBER BY PU (PU)

PU	MARKET GROUP	PRODUCT	QUANTITY	UNIT	ACRES	ADVERTISE PRICE
1	Red Maple	Sawtimber	27.8	MBF	37.1	\$15,687.40
	Yellow Birch		9.2	MBF		
	Balsam Fir	Pulpwood	31	Cords		
	Hemlock		101	Cords		
	Mixed Aspen		74	Cords		
	<i>B. T. Aspen</i>		4	<i>Cords</i>		
	<i>Quaking Aspen</i>		70	<i>Cords</i>		
	Mixed Hardwood		590	Cords		
	<i>Beech</i>		36	<i>Cords</i>		
	<i>Red Maple</i>		527	<i>Cords</i>		
	<i>Yellow Birch</i>		27	<i>Cords</i>		
	Mixed Spruce		16	Cords		
	<i>Black Spruce</i>		2	<i>Cords</i>		
	<i>White Spruce</i>		14	<i>Cords</i>		
	Paper Birch		10	Cords		
	<i>Paper Birch</i>		10	<i>Cords</i>		
	White Pine		80	Cords		
2	Red Maple	Sawtimber	2.9	MBF	9.0	\$5,972.85
	Balsam Fir	Pulpwood	140	Cords		
	Mixed Aspen		31	Cords		
	<i>Quaking Aspen</i>		31	<i>Cords</i>		
	Mixed Hardwood		114	Cords		
	<i>Red Maple</i>		114	<i>Cords</i>		
	Mixed Spruce		236	Cords		
	<i>Black Spruce</i>		236	<i>Cords</i>		
	N. White Cedar		5	Cords		
	Paper Birch		7	Cords		
	<i>Paper Birch</i>	<i>Sawtimber</i>	1.0	<i>MBF</i>		
<i>Paper Birch</i>	<i>Pulpwood</i>	5	<i>Cords</i>			
3	Red Maple	Sawtimber	45.6	MBF	31.9	\$13,526.30
	Yellow Birch		3.2	MBF		
	Balsam Fir	Pulpwood	61	Cords		
	Mixed Hardwood		484	Cords		
	<i>Red Maple</i>		469	<i>Cords</i>		
	<i>Yellow Birch</i>		15	<i>Cords</i>		
	Mixed Spruce		211	Cords		
	<i>Black Spruce</i>		125	<i>Cords</i>		
	<i>White Spruce</i>		86	<i>Cords</i>		
	N. White Cedar		283	Cords		
	Paper Birch		66	Cords		
	<i>Paper Birch</i>	<i>Sawtimber</i>	2.2	<i>MBF</i>		
	<i>Paper Birch</i>	<i>Pulpwood</i>	62	<i>Cords</i>		
4	Red Maple	Sawtimber	2.6	MBF	5.2	\$1,452.65
	Balsam Fir	Pulpwood	7	Cords		
	Mixed Hardwood		25	Cords		
	<i>Red Maple</i>		23	<i>Cords</i>		
	<i>Yellow Birch</i>		2	<i>Cords</i>		
	Mixed Spruce		13	Cords		
	<i>Black Spruce</i>		13	<i>Cords</i>		
	N. White Cedar		76	Cords		
	Paper Birch		16	Cords		
	<i>Paper Birch</i>	<i>Sawtimber</i>	2.4	<i>MBF</i>		
	<i>Paper Birch</i>	<i>Pulpwood</i>	11	<i>Cords</i>		
White Pine		20	Cords			

TOTAL:	91.3	MBF
TOTAL:	2,697	Cords

Sale Specific Conditions & Requirements

Sale Name: Sting Box Mix

Sale Number: 42-026-23 Seq#: 1

1 - Sale Area

1.2 - Boundaries

1.2.1 - Painted boundaries (9/19)

The sale boundary and Payment Unit boundaries are marked and identified by blue, red and yellow paint. Exterior sale boundary lines against private property are marked with blue paint. Exterior sale boundary lines against state are marked with red paint. Interior Payment Unit boundaries are marked with yellow paint. Retention patches are marked with red paint; no harvesting activities may occur within these areas. Yellow painted trees designating an interior Payment Unit boundary are only to be cut when all surrounding Payment Units have been paid.

2 - Timber Specifications

2.1 - Included Timber

2.1.1 - Clearcut unit(s) with unmerchantable trees (6/14)

Within Payment Unit(s) 1 & 2, cut all trees that are two (2) inches or more at DBH, with the following exceptions:

- Within Payment Unit 1, do not cut any hemlock.
- Within Payment Unit 2, do not cut any white pine that are eighteen (18) inches or more at DBH or any hemlock.

Special protection areas identified in accordance with condition 3.4.3, within clearcutting unit boundaries, are not Included Timber and are to be protected.

2.1.7 - Leave tree marked unit(s) (6/14)

Within Payment Unit(s) 3 & 4, cut all trees that are two (2) inches or more at DBH, except do not cut any trees marked with green paint above and below stump height or any hemlock. In addition, the following exceptions apply:

- Within Payment Unit 3, do not cut any white pine.
- Within Payment Unit 4, do not cut cedar marked with green paint.

3 - Payments

3.3 - Pre-measured Sales

3.3.4 - Dividing payment units (7/14)

Payment Unit(s) 1 & 3, may be divided at the request of the Purchaser and upon approval of the Unit Manager. Dividing Payment Units is a contract modification which requires a Timber Sale Contract Amendment. There will be only one division per Payment Unit.

3.4 - Damaged Timber

3.4.3 - Special Protection Areas (8/11)

The Purchaser shall protect special protection areas from damage by the Purchaser's operations. Special protection areas are marked with a red boundary line. The Purchaser shall not cut live or dead trees within special protection areas.

4 - Transportation

4.1 - Construction

4.1.4 - Timber removed for construction (3/23)

Trees cut or damaged in the process of pre-approved road, landing or skid trail construction will be decked in an area separate from other Designated Timber and not removed until measured by the sale administrator. Payment will be made at contract prices or average prices, if not on the contract.

4.1.6 - Road construction (1/09)

Construction of new roads or improvements of existing roads shall be done in such a way as to minimize the environmental and visual impacts. Merchantable trees shall be cut and utilized unless otherwise directed. Non-merchantable trees shall be severed and laid flat on the ground. Slash shall be scattered, and not left in windrows and kept a minimum of 10 feet back from the road edge or be chipped, utilized or otherwise removed from the sale. Stumps shall be set upright, not left on edge, and be moved at least 10 feet away from the road edge. Disturbed soil shall be feathered into the woods and not left in berms or windrows.

4.1.7 - Road closure (10/11)

All new roads built into the sale must be blocked to vehicle traffic upon completion of the sale. Overgrown roads that are reopened shall be considered new roads. In general, this will require constructing a four (4') foot high berm of stumps and logs covered with earth. All stumps from road building and landing construction must be reserved to block any newly constructed roads upon completion of the sale. These stumps must be scattered along the road system to prohibit vehicular movement. Contact the Sale Administrator for specific details of design and placement.

4.2 - Maintenance

4.2.3 - Road maintenance (8/13)

The following road maintenance may be needed: After completion of hauling, or if no hauling occurs for 30 days, the road must be maintained and graded. This includes cleaning of drainage areas, grading, crowning and filling with gravel, if necessary. Damages will be assessed if grading/repair does not occur. Grade road to acceptable standards and fill any holes that develop with gravel, if necessary. Contact the Sale Administrator for more details.

4.2.4 - Grading (10/16)

For completion of the sale, state forest roads must be graded. In general, this will require a road grader or bulldozer to shape up the roads after forest products have been hauled off site. This includes cleaning of drainage areas, grading, crowning and filling with gravel, if necessary. The grading equipment to be used must be approved by the Unit Manager or his/her representative.

4.4 - Access

4.4.3 - Access gate (12/08)

Depending on the time of year the sale is cut, the GEM access gate will need to be locked at the completion of each day, unless otherwise approved by the Unit Manager or his/her representative.

5 - Operations

5.2 - Conduct of Operations

5.2.1 - Slash

5.2.1.8 - Slash height (12/08)

No slash or treetops may exceed 36 inches in height.

5.2.2 - Hazard Trees/Snags

5.2.2.1 - Den trees (10/16)

Obvious hollow and/or den trees shall be protected and left standing unless they are a safety hazard.

5.2.3 - Operating Restrictions

5.2.3.11 - Coppice regeneration protection (4/10)

Timber harvesting in Payment Unit 1 must be completed before significant aspen sprouting occurs in that Payment Unit so as to minimize damage to the new regeneration.

5.2.22 - Operating Caution

5.2.22.1 - Operating caution (6/11)

It is recommended, but not required, that within Payment Unit(s) 1-4, cutting, skidding, and hauling occur during dry summer or frozen winter conditions. The reason for the recommendation is because of low ground areas within the

Payment Units.

5.2.32 - Decking/landing restoration (9/13)

All decking and landing areas must have the surface area restored to a condition equal to or better than before. This is to ensure the proper regeneration of the stand. Wood debris, chips and "cookies" from trimmings must be removed or scattered away from landing and loading areas and may not be windrowed on the edge.

5.2.37 - No decking areas (12/08)

No decking is allowed along the snowmobile trail during the winter months, without permission of the Unit Manager or his/her representative.

5.2.38 - No decking against live trees (2/04)

Cut products may not be decked against unmarked or designated leave trees.

5.2.40 - Pathway protection (10/10)

The GEM Hunting trail is shown on the Timber Sale Map. Do not cut trees or damage posts with pathway markers. Maintain a 20-foot wide slash, debris, and rut free zone daily, using the pathway as the centerline. Skidding across the trail may only occur in locations approved by the Sale Administrator.

5.2.41 - Snowmobile trail protection (9/11)

The snowmobile trail is shown on the Timber Sale Map. Do not cut or damage posts with orange trail markers or traffic control signs. If the trail is used, it must be maintained and restored to a condition equal to or better than before the sale. The road maintenance/restoration must be done prior to December 1. If the trail road is to be used for hauling during the snowmobile season, then a snow-covered base must be left on the trail. Maintain a 20-foot-wide slash, debris, and rut free zone daily using the snowmobile trail as the centerline.

5.4 - Soil Protection

5.4.5 - Soil caution (11/04)

Care must be taken to minimize soil damage due to the wet soil types within the Sale Area.

5.8 - Protection of Endangered Species

5.8.5 - Protection of raptor nests (3/13)

All trees with raptor nests will be protected if found during harvesting operations. Notification will be made to the Unit Manager or his/her representative who will notify the Wildlife Biologist so an on-site evaluation and recommendation can be made, if necessary.

6 - Safety and Fire Prevention

6.2 - Signing

6.2.1 - Road posting (10/20)

The Purchaser is responsible for posting and maintaining caution signs on County Road 500 prior to beginning operations. The road must be posted at appropriate distances from the Sale Area to warn of logging activity and truck traffic. Signs must be removed when harvest operations are suspended or completed. The Purchaser will provide these signs.

6.2.2 - Snowmobile trail posting (10/20)

The Purchaser is responsible for posting and maintaining caution signs on the snowmobile trail prior to beginning operations during the snowmobile season (approximately December 1 to March 31). The trail must be posted at appropriate distances from the Sale Area to warn of logging activity and truck traffic. Signs must be removed when harvest operations are suspended or completed. The DNR will provide these signs.

6.2.3 - Recreational trail posting (10/20)

The Purchaser is responsible for posting and maintaining caution signs on GEM Hunting Trails prior to beginning operations. The trail must be posted at appropriate distances from the Sale Area to warn of logging activity and truck traffic at both ends of the trail. Signs must be removed when harvest operations are suspended or completed. The DNR will provide these signs.

7 - Other Conditions

7.2 - Extensions

7.2.5 - Weather related extension (1/13)

If weather conditions during the operating period of this contract prevent harvesting, this sale may qualify for a weather related extension. If approved, the normal extension fee would be waived. To qualify, there must be a documented attempt each year to harvest in the difficult portion of the sale.



TIMBER SALE MAP

This information provided by authority of Part 525, 1994 PA 451, as amended.

Sale Number
42-026-23

Date
10/10/2023

Forest Management Unit
Newberry Mgt Unit

County
Luce

Mapped By: **A. Ciaramitaro**

Scale
1:15,840

Page
1

Of
2

Cruised By: **Newberry Unit Staff**

Township
48N

Range
08W

Section(s) and Subdivision(s)
Sec. 4 S1/2SW,SWSE; Sec. 5 SESW,SESE; Sec. 8 E1/2NW,N1/2NE;

Cover Type

A = Aspen	J = Jack Pine	O = Oak	U = Upland Brush
B = Paper Birch	K = Rock	P = Lowland Poplar	UM = Upland Mix Forest
C = Cedar	L = Lowland Brush	Q = Mixed Swamp Conifer	V = Bog or Marsh
D = Treed Bog	LM = Lowland Mix Forest	R = Red Pine	W = White Pine
E = Swamp Hardwoods	M = Maple, Beech, Birch	S = Black Spruce	X = Non Stocked
F = Spruce/Fir	MC = Mixed Conifer	T = Tamarack	Y = Sand
G = Grass	MD = Mixed Deciduous	Z = Water	
H = Hemlock	N = Marsh		

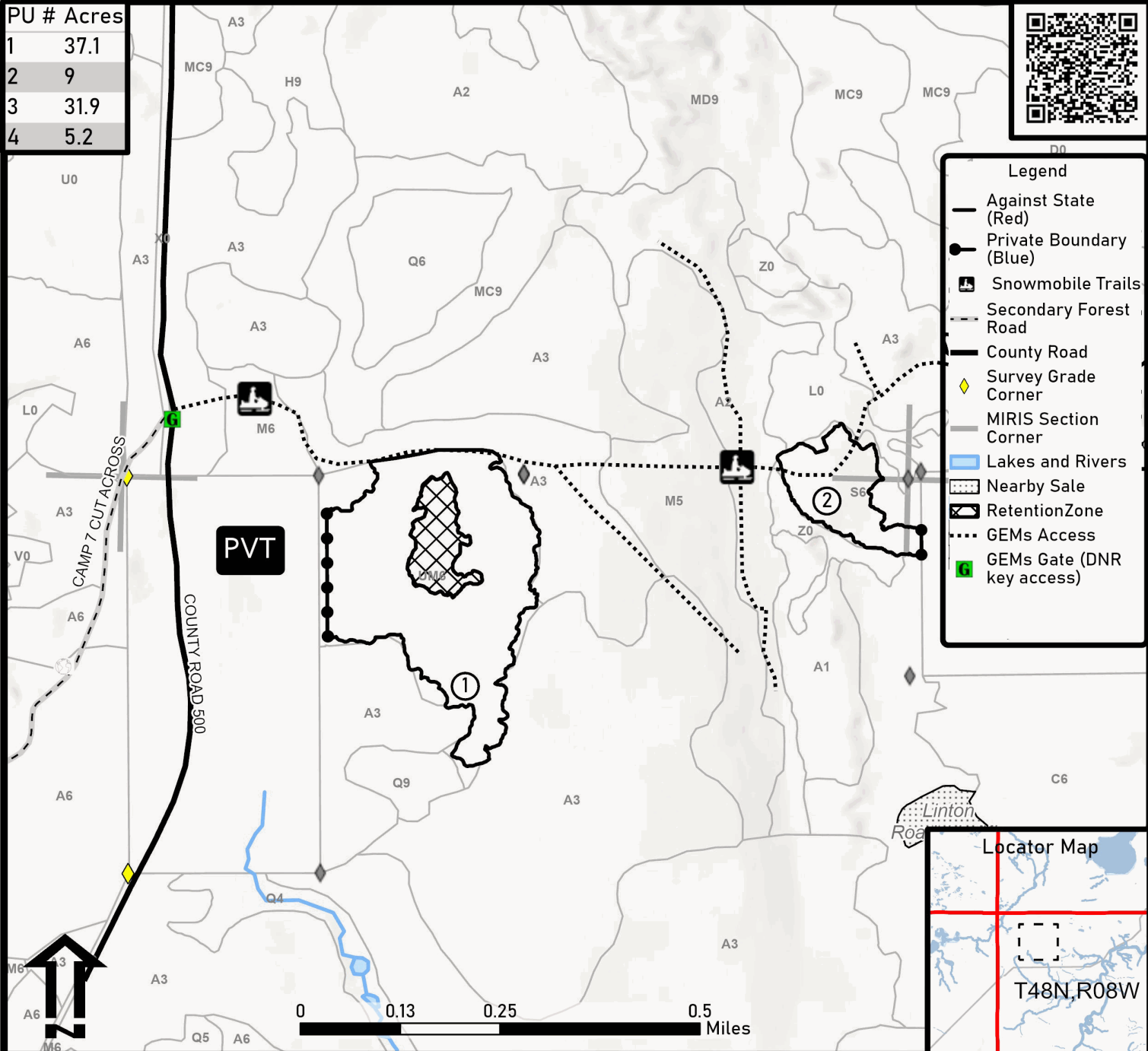
Density

0 = Non Stocked	5 = Pole Timber Medium
1 = Seedling Sapling Poor	6 = Pole Timber Well
2 = Seedling Sapling Medium	7 = Saw Timber Poor
3 = Seedling Sapling Well	8 = Saw Timber Medium
4 = Pole Timber Poor	9 = Saw Timber Well

Sting Box Mix

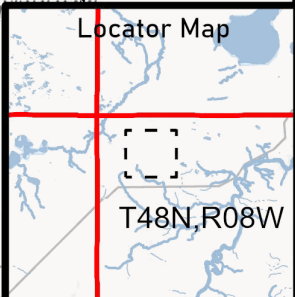
Compartment: 42047 Acres: 83.2

PU #	Acres
1	37.1
2	9
3	31.9
4	5.2



Legend

- Against State (Red)
- Private Boundary (Blue)
- ☞ Snowmobile Trails
- - - Secondary Forest Road
- County Road
- ◆ Survey Grade Corner
- MIRIS Section Corner
- ▭ Lakes and Rivers
- ▭ Nearby Sale
- ▭ Retention Zone
- ⋯ GEMs Access
- GEMs Gate (DNR key access)





TIMBER SALE MAP

This information provided by authority of Part 525, 1994 PA 451, as amended.

Sale Number
42-026-23

Date
10/10/2023

Forest Management Unit
Newberry Mgt Unit

County
Luce

Mapped By: **A. Ciaramitaro**
Cruised By: **Newberry Unit Staff**

Scale
1:15,840

Page
2

Of
2

Township 48N Range 08W Section(s) and Subdivision(s) Sec. 4 S1/2SW,SWSE; Sec. 5 SESW,SESE; Sec. 8 E1/2NW,N1/2NE;

Cover Type

A = Aspen	J = Jack Pine	O = Oak	U = Upland Brush
B = Paper Birch	K = Rock	P = Lowland Poplar	UM = Upland Mix Forest
C = Cedar	L = Lowland Brush	Q = Mixed Swamp Conifer	V = Bog or Marsh
D = Treed Bog	LM = Lowland Mix Forest	R = Red Pine	W = White Pine
E = Swamp Hardwoods	M = Maple, Beech, Birch	S = Black Spruce	X = Non Stocked
F = Spruce/Fir	MC = Mixed Conifer	T = Tamarack	Y = Sand
G = Grass	MD = Mixed Deciduous	Z = Water	
H = Hemlock	N = Marsh		

Density

0 = Non Stocked	5 = Pole Timber Medium
1 = Seedling Sapling Poor	6 = Pole Timber Well
2 = Seedling Sapling Medium	7 = Saw Timber Poor
3 = Seedling Sapling Well	8 = Saw Timber Medium
4 = Pole Timber Poor	9 = Saw Timber Well

Sting Box Mix

Compartment: 42047 Acres: 83.2

PU #	Acres
1	37.1
2	9
3	31.9
4	5.2

