



**DEPARTMENT OF NATURAL RESOURCES
STATE OF MICHIGAN
TIMBER SALE PROSPECTUS #7536**

SCHEDULED SALE DATE AND TIME: 9:00 a.m. (local time) on January 23, 2025.

LOCATION: PIGEON RIVER COUNTRY MGMT UNIT, PO BOX 456, 9966 TWIN LAKES ROAD, VANDERBILT, MI

CONTACT NAME: Mark Monroe

PHONE NUMBER: (989) 983-4101

PROSPECTUS NOTE: The bidder is advised to inspect the sale area and review the location, estimated volumes, operating costs and contract terms of proposed sales. Please be aware that some landowners may request 60 days or more notice for access across their land.

Notice is hereby given that bids will be received by the Unit Manager, PIGEON RIVER COUNTRY MANAGEMENT UNIT, for certain timber on the following described lands:

Mile Long Aspen 2 (53-012-24) / T31N, R01W, SEC. 1 , NENW,NWNE.
T32N, R01W, SEC. 36, S1/2SW,S1/2SE.

Otsego County, Advertised Price \$43,378.50, 63.4 Acres, Aspen, Hardwood.

SALE NOTE: A recreation site such as a trail, pathway, or campground is within the sale area or the vicinity. Certain restrictions/specifications may be applicable including time restrictions.

TIMBER SALE INFORMATION

Mile Long Aspen 2 (53-012-24)
 T31N, R01W, SEC. 1; T32N, R01W, SEC. 36.
 Otsego County (Advertised Price \$43,378.50)

SALE NOTE: A recreation site such as a trail, pathway, or campground is within the sale area or the vicinity. Certain restrictions/specifications may be applicable including time restrictions.

A timber sale contract for this lump sum, sealed bid timber sale will be awarded to the responsible bidder offering the highest sealed bid price. All units of volume listed below were estimated using the Inventory Manager computer program and the new Michigan taper model. Bids must be at or above the following advertised price for each product and species:

<u>PRODUCTS & SPECIES</u>	<u>ESTIMATED UNITS*</u>	<u>ADVERTISED PRICE</u>
Sawtimber		
B. T. Aspen	42.1 MBF	\$ 38.00 / MBF
Red Pine	62.0 MBF	\$ 144.00 / MBF
Pulpwood		
Jack Pine	23 Cords	\$ 12.10 / Cord
Mixed Aspen	1,335 Cords	\$ 18.55 / Cord
Mixed Hardwood	189 Cords	\$ 12.10 / Cord
Red Pine	49 Cords	\$ 50.70 / Cord
White Pine	160 Cords	\$ 17.85 / Cord
White Spruce	11 Cords	\$ 16.45 / Cord

* The total volume is statistically estimated within plus (+) or minus (-) 20.81 percent. There are an estimated 2,010 cords on this timber sale, plus or minus 418 cords at the 95% confidence level. The estimated units are final and not subject to adjustment. Prospective bidders are urged to examine this timber and to make their own estimates of quantity and quality.

BOND AND PAYMENT SCHEDULE:

1. A bond in the amount of \$4,337.85 to insure faithful performance of the conditions of the contract will be deposited by the successful bidder within 21 days of the sale award.
2. Cutting in any sale or unit without the required advance payment would be considered a trespass.
3. Total payment must be paid in advance or according to the following schedule :
 - (a) Ten percent (10%) of the sale value must be paid within 21 days of the sale award.
 - (b) The 10% down payment will be credited towards the first unit cut.
 - (c) Payment for each of the following units must be made before cutting begins in that unit:

PAYMENT UNIT NUMBER	PERCENT OF TOTAL SALE VALUE
01	33.2%
02	44.8%
03	20.2%
04	1.1%
05	0.7%
4. If no cutting takes place, the 10% down payment will not be refunded.
5. Operations on the contract issued will terminate on 06/30/2028.

SALE STATISTICS

Volumes were calculated in cubic feet using the Michigan taper model. Cubic foot volume includes all wood inside bark for the product indicated. For display purposes, cubic feet were converted to cords and MBF using a simple conversion factor, e.g. 79 cubic feet per cord and 185 cubic feet per MBF. The cubic foot volumes are precise; the cords and MBF volumes are not. Cubic foot volume cannot be directly converted to cords or boards with precision.

SALE VOLUMES

The total estimated sale volume may not equal the sum of the species/products due to the nature of statistical calculations associated with double sampling methodology.

VOLUME		STATISTICAL RANGE IN CORDS		
TOTAL CUBIC FEET	TOTAL CORDS	PERCENT ERROR	MINIMUM	MAXIMUM
158,768	2,010	20.81%	1,591	2,428

VDU VOLUMES

A VDU is a Volume Determination Unit. Volumes and their associated statistics are calculated at the VDU level and summarized to the sale level. There is often a one to one relationship between a VDU and a Payment Unit, but not always, depending on the cruise design. Refer to the VDU TO PAYMENT UNIT table.

VDU	VOLUME		PERCENT ERROR	RANGE IN CORDS	
	TOTAL CUBIC FEET	TOTAL CORDS		MINIMUM	MAXIMUM
18	416	5	322.49%	0	22
19	1,020	13	231.46%	0	43
26	2,633	33	131.00%	0	77
80	65,698	832	31.84%	567	1,096
82	50,908	644	39.89%	387	901
109	38,093	482	43.99%	270	694
TOTAL:	158,768	2,010		1,224	2,834

VDU TO PAYMENT UNIT

When a VDU is associated with more than one Payment Unit (PU), the VDU volumes are assigned to the PU based on acres of the VDU within the PU.

VDU	VDU ACRES	PU	PU ACRES
18	1.5	5	1.5
19	2.2	5	2.2
26	2.8	4	2.8
80	25.0	1	25.0
82	16.6	2	16.6
109	15.3	3	15.3
TOTAL:	63.4		63.4

DESCRIPTION OF TIMBER BY PU (PU)

PU	MARKET GROUP	PRODUCT	QUANTITY	UNIT	ACRES	ADVERTISE PRICE
1	B. T. Aspen	Sawtimber	32.2	MBF	25.0	\$14,406.95
	Mixed Aspen	Pulpwood	490	Cords		
	<i>B. T. Aspen</i>		376	<i>Cords</i>		
	<i>Quaking Aspen</i>		114	<i>Cords</i>		
	Mixed Hardwood		108	Cords		
	<i>Red Maple</i>	<i>Sawtimber</i>	1.4	<i>MBF</i>		
	<i>Red Maple</i>	<i>Pulpwood</i>	98	<i>Cords</i>		
	<i>Sugar Maple</i>		7	<i>Cords</i>		
	White Pine		146	Cords		
	White Spruce		11	Cords		
2	B. T. Aspen	Sawtimber	3.8	MBF	16.6	\$19,399.10
	Red Pine		62.0	MBF		
	Mixed Aspen	Pulpwood	376	Cords		
	<i>B. T. Aspen</i>		254	<i>Cords</i>		
	<i>Quaking Aspen</i>		122	<i>Cords</i>		
	Mixed Hardwood		54	Cords		
	<i>Red Maple</i>		54	<i>Cords</i>		
	Red Pine		49	Cords		
	White Pine		12	Cords		
	3	B. T. Aspen	Sawtimber	2.4		
Jack Pine		Pulpwood	12	Cords		
Mixed Aspen			452	Cords		
<i>B. T. Aspen</i>			186	<i>Cords</i>		
<i>Quaking Aspen</i>			266	<i>Cords</i>		
Mixed Hardwood			13	Cords		
<i>Red Maple</i>			13	<i>Cords</i>		
4		B. T. Aspen	Sawtimber	3.7	MBF	2.8
	Jack Pine	Pulpwood	3	Cords		
	Mixed Aspen		8	Cords		
	<i>B. T. Aspen</i>		8	<i>Cords</i>		
	Mixed Hardwood		14	Cords		
	<i>Black Cherry</i>		1	<i>Cords</i>		
	<i>Red Maple</i>		13	<i>Cords</i>		
5	Jack Pine	Pulpwood	8	Cords	3.7	\$299.45
	Mixed Aspen		9	Cords		
	<i>Quaking Aspen</i>		9	<i>Cords</i>		
	White Pine		2	Cords		
TOTAL:			104.1	MBF		
TOTAL:			1,767	Cords		

Sale Specific Conditions & Requirements

Sale Name: Mile Long Aspen 2

Sale Number: 53-012-24 Seq#: 1

1 - Sale Area

1.2 - Boundaries

1.2.1 - Painted Boundaries (9/19)

The sale boundary and Payment Unit boundaries are marked and identified by blue, red and yellow paint. Exterior sale boundary lines against private property is marked with blue paint. Exterior sale boundary lines against state are marked with red paint. Interior Payment Unit boundaries are marked with yellow paint. The painted boundary line trees are not Included Timber and are to be protected. Yellow painted trees designating an interior Payment Unit boundary are only to be cut when all surrounding Payment Units have been paid.

2 - Timber Specifications

2.1 - Included Timber

2.1.1 - Clearcut Unit(s) with Unmerchantable Trees (6/14)

Within Payment Unit(s) 1-5, cut all trees that are two (2) inches or more at DBH, with the following exceptions:

- Within Payment Unit 1, do not cut any red pine, birch, oak, or trees marked with green paint. In addition, do not cut any white pine or spruce that are 16 inches or more at DBH.
- Within Payment Unit 2, do not cut any oak, birch, or trees marked with green paint.
- Within Payment Unit 3, do not cut any red pine, white pine, oak, or trees marked with green paint.
- Within Payment Unit 4, do not cut any red pine, oak, or trees marked with green paint.
- Within Payment Unit 5, do not cut any red pine or trees marked with green paint.

Special protection trees identified in accordance with condition 3.4.2, within clearcutting unit boundaries, are not Included Timber and are to be protected.

2.2 - Utilization

2.2.2 - Chipping required (2/18)

Payment Units 4 and 5 must be chip harvested to facilitate future silvicultural activities and natural regeneration. Products may be produced as roundwood and forwarded to decking areas in final product length, but the tops must be left intact and skidded to the landing for chipping in order to minimize the amount of residual slash. If market conditions limit the practicality of chipping, tops and slash must be arranged in a way that will not inhibit future planting operations, as directed by the Sale Administrator.

3 - Payments

3.4 - Damaged Timber

3.4.2 - Special Protection Trees (4/14)

The Purchaser shall not cut live or dead special protection trees within cutting units or clearings. Special protection trees are trees marked in green paint. If the Purchaser's operations have cut or damaged special protection trees through carelessness, the Purchaser shall pay \$250 as fixed, agreed and liquidated damages for each special protection tree cut or damaged. Such payment does not constitute ownership of the undesignated timber.

4 - Transportation

4.1 - Construction

4.1.3 - Slash and earthen piles (8/04)

Piles or windrows of earth along roads and landings that have been widened or constructed shall be leveled. Slash from road maintenance or construction, including stumps, shall be dispersed throughout the sale.

4.1.7 - Road closure (10/11)

Overgrown roads that are reopened must be blocked to vehicle traffic upon completion of the sale. In general, this will require constructing a four (4') foot high berm of stumps and logs covered with earth. These roads must be rendered impassable to cars and trucks. Contact the Sale Administrator for specific details of design and placement.

4.1.12 - No new roads (1/12)

No new roads will be permitted in any Payment Unit. All operations are limited to existing roads.

4.2 - Maintenance

4.2.5 - Two wheel drive condition (2/04)

All existing trail roads on and adjacent to the sale area must be passable by two-wheel drive traffic for the duration of the sale.

5 - Operations

5.1 - Notification

5.1.3 - Well heads and natural gas pipelines (11/15)

The Purchaser is responsible for contacting the pipeline company 10 days prior to operating equipment in the vicinity of well heads or natural gas pipelines. Note that the pipeline splits the west end of Payment Unit 1, and also travels along the south edge of Payment Unit 5. Permission is required before harvest operations begin and must be submitted to the Unit Manager.

5.2 - Conduct of Operations

5.2.2 - Hazard Trees/Snags

5.2.2.1 - Den trees (10/16)

Obvious hollow and/or den trees shall be protected and left standing unless they are a safety hazard.

5.2.3 - Operating Restrictions

5.2.3.11 - Coppice regeneration protection (4/10)

To promote aspen regeneration, harvesting is limited to November 1 through March 31. Timber harvesting in any Payment Unit must be completed before significant aspen sprouting occurs in that Payment Unit so as to minimize damage to the new regeneration. Any post harvest operations, such as chipping, must be completed before sprouting of regeneration occurs. If it is anticipated that chipping will be delayed, then tops shall be carried to one central location or left unchipped. The Unit Manager or his/her representative may cease such operations if sprouting occurs before the operation is complete.

5.2.4 - Dead and Down Creation

5.2.4.1 - Dead and down creation, marked trees (10/13)

All trees marked with a "X" of orange paint are to be felled and left on site for wildlife.

5.2.29 - Shrub protection (1/20)

Do not cut or damage hawthorn or witch hazel where they can be easily avoided. These woody-shrub plants are highly beneficial to various wildlife species.

5.2.32 - Decking/landing restoration (9/13)

All decking and landing areas must have the surface area restored to a condition equal to or better than before. This is to ensure the proper regeneration of the stand.

5.2.40 - Pathway protection (10/10)

The High Country Pathway is a hiking trail and is shown on the Timber Sale Map. Do not cut trees or damage posts with blue pathway markers. Maintain a 20-foot-wide slash, debris, and rut free zone daily, using the pathway as the centerline. Do not run equipment down the pathway. Skidding across the trail may only occur in locations approved by the Sale Administrator.

5.4 - Soil Protection

5.4.1 - Rutting restriction, general (7/16)

Operations are to cease immediately if equipment and weather conditions result in rutting of roads and/or skid trails which is 12 inches or greater in depth and 25 feet in length. The Unit Manager or his/her representative may restrict hauling and/or skidding if ruts exceed the specified depth. With the Unit Manager or his/her representative's approval, the Purchaser may return to the area when the risk of rutting has decreased.

5.8 - Protection of Endangered Species

5.8.5 - Protection of raptor nests (3/13)

All trees with raptor nests will be protected if found during harvesting operations. Notification will be made to the Unit Manager or his/her representative who will notify the Wildlife Biologist so an on-site evaluation and recommendation can be made, if necessary.

6 - Safety and Fire Prevention

6.2 - Signing

6.2.1 - Road posting (10/20)

The Purchaser is responsible for posting and maintaining caution signs on Chandler Dam Road prior to beginning operations. The road must be posted at appropriate distances from the Sale Area to warn of logging activity and truck traffic. Signs must be removed when harvest operations are suspended or completed. The Purchaser will provide these signs.

6.2.3 - Recreational trail posting (10/20)

The Purchaser is responsible for posting and maintaining caution signs on the High Country Pathway prior to beginning operations. The trail must be posted at appropriate distances from the Sale Area to warn of logging activity and truck traffic at both ends of the trail. Signs must be removed when harvest operations are suspended or completed. The Purchaser will provide these signs.



TIMBER SALE MAP

This information provided by authority of Part 525, 1994 PA 451, as amended.

Sale Number	Date	
53-012-24	11/14/2024	
Scale	Page	Of
1:10,000	1	1

Forest Management Unit	County	Mapped By: Joy Mittig
Pigeon River Country Mgt Unit	Otsego	Cruised By: Joy Mittig

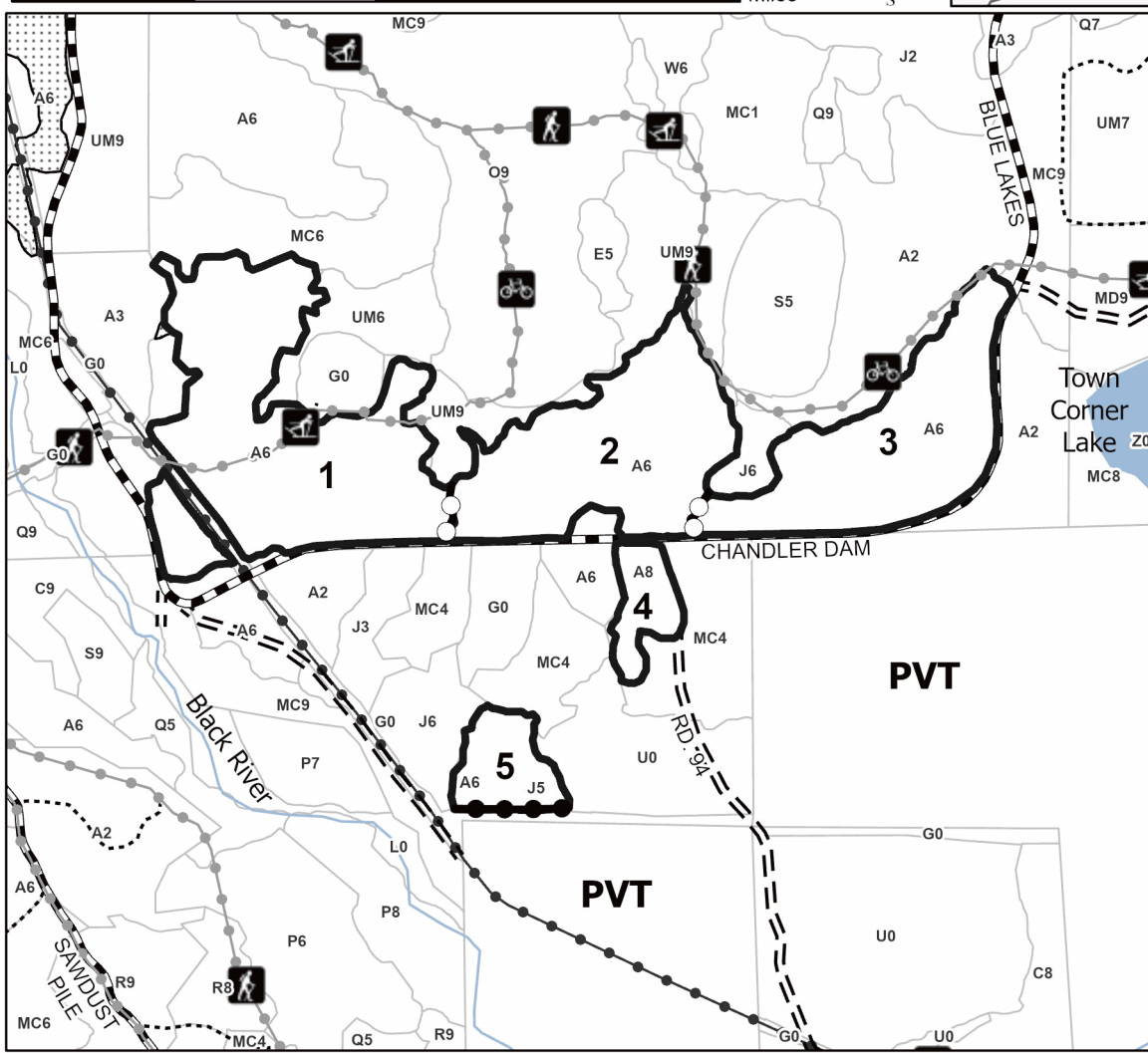
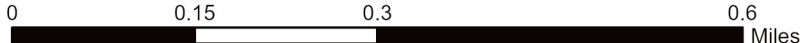
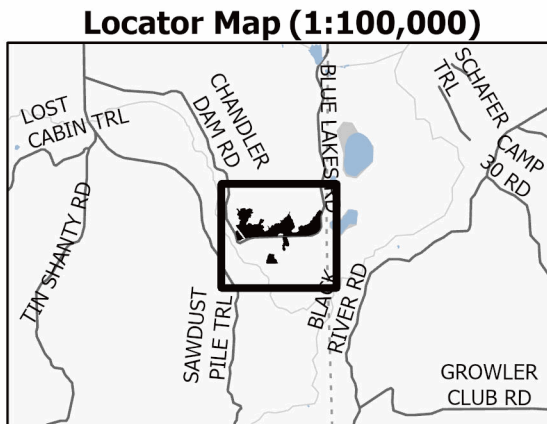
Township	Range	Section(s) and Subdivision(s)
31N / 32N	01W	Sec. 1 NENW,NWNE; Sec. 36 S1/2SW,S1/2SE;

Cover Type			
A = Aspen	J = Jack Pine	O = Oak	U = Upland Brush
B = Paper Birch	K = Rock	P = Lowland Poplar	UM = Upland Mix Forest
C = Cedar	L = Lowland Brush	Q = Mixed Swamp Conifer	V = Bog or Marsh
D = Tread Bog	LM = Lowland Mix Forest	R = Red Pine	W = White Pine
E = Swamp Hardwoods	M = Maple, Beech, Birch	S = Black Spruce	X = Non Stocked
F = Spruce/Fir	MC = Mixed Conifer	T = Tamarack	Y = Sand
G = Grass	MD = Mixed Deciduous	Z = Water	
H = Hemlock	N = Marsh		

Density	
0 = Non Stocked	5 = Pole Timber Medium
1 = Seedling Sapling Poor	6 = Pole Timber Well
2 = Seedling Sapling Medium	7 = Saw Timber Poor
3 = Seedling Sapling Well	8 = Saw Timber Medium
4 = Pole Timber Poor	9 = Saw Timber Well

PU #	Acres
1	24.9
2	16.6
3	15.3
4	2.8
5	3.7

**Mile Long
Aspen 2
63.4 Acres**



Legend	
	Against State (Red)
	Payment Unit (Yellow)
	Private Line (Blue)
	Nearby Timber Sale
	Stand
	Recreational Trail
	Powerline
	Lakes and Rivers
	Perennial River
	Forest Access Route
	Administrative Access Only
	Government Gravel/Dirt

Use QR Code to open Map in App

