



**DEPARTMENT OF NATURAL RESOURCES  
STATE OF MICHIGAN  
TIMBER SALE PROSPECTUS #7545**

**SCHEDULED SALE DATE AND TIME: 3:00 p.m. (local time) on December 19, 2024.**

**LOCATION: NEWBERRY MGMT UNIT, PO BOX 428, 5666 S STATE HWY M 123, NEWBERRY, MI 49868.**

**CONTACT NAME: Keith Magnusson**

**PHONE NUMBER: (906) 291-0120**

**PROSPECTUS NOTE: The bidder is advised to inspect the sale area and review the location, estimated volumes, operating costs and contract terms of proposed sales. Please be aware that some landowners may request 60 days or more notice for access across their land.**

Notice is hereby given that bids will be received by the Unit Manager, NEWBERRY MANAGEMENT UNIT, for certain timber on the following described lands:

Coal Bucket Pine (42-001-24) / T46N, R10W, SEC. 17, N1/2NW.

T46N, R10W, SEC. 18, N1/2NE.

T46N, R10W, SEC. 8, S1/2SW.

Luce County, Advertised Price \$31,030.30, 54.5 Acres, Hardwood, Red Pine.

SALE NOTE: A recreation site such as a trail, pathway, or campground is within the sale area or the vicinity. Certain restrictions/specifications may be applicable including time restrictions. Access may be through other public land.

# TIMBER SALE INFORMATION

## Coal Bucket Pine (42-001-24)

T46N, R10W, SEC. 17; T46N, R10W, SEC. 18; T46N, R10W, SEC. 8.

Luce County (Advertised Price \$31,030.30)

SALE NOTE: A recreation site such as a trail, pathway, or campground is within the sale area or the vicinity. Certain restrictions/specifications may be applicable including time restrictions. Access may be through other public land.

A timber sale contract for this lump sum, sealed bid timber sale will be awarded to the responsible bidder offering the highest sealed bid price. All units of volume listed below were estimated using the Inventory Manager computer program and the new Michigan taper model. Bids must be at or above the following advertised price for each product and species:

<u>PRODUCTS &amp; SPECIES</u>	<u>ESTIMATED UNITS*</u>	<u>ADVERTISED PRICE</u>
Sawtimber		
Black Cherry	2.7 MBF	\$ 95.00 / MBF
Paper Birch	3.4 MBF	\$ 40.00 / MBF
Red Maple	32.9 MBF	\$ 36.00 / MBF
Pulpwood		
Balsam Fir	27 Cords	\$ 8.50 / Cord
Jack Pine	3 Cords	\$ 31.20 / Cord
Mixed Hardwood	44 Cords	\$ 10.55 / Cord
Quaking Aspen	38 Cords	\$ 23.85 / Cord
Red Maple	254 Cords	\$ 10.55 / Cord
Red Pine	518 Cords	\$ 45.30 / Cord
White Pine	35 Cords	\$ 13.30 / Cord
White Spruce	221 Cords	\$ 5.20 / Cord

\* The total volume is statistically estimated within plus (+) or minus (-) 33.21 percent. There are an estimated 1,232 cords on this timber sale, plus or minus 409 cords at the 95% confidence level. The estimated units are final and not subject to adjustment. Prospective bidders are urged to examine this timber and to make their own estimates of quantity and quality.

### **BOND AND PAYMENT SCHEDULE:**

1. A bond in the amount of \$1,551.52 to insure faithful performance of the conditions of the contract will be deposited by the successful bidder within 21 days of the sale award.
2. Cutting in any sale or unit without the required advance payment would be considered a trespass.
3. Total payment must be paid in advance or according to the following schedule :
  - (a) Ten percent (10%) of the sale value must be paid within 21 days of the sale award.
  - (b) The 10% down payment will be credited towards the first unit cut.
  - (c) Payment for each of the following units must be made before cutting begins in that unit:
 

PAYMENT UNIT NUMBER	PERCENT OF TOTAL SALE VALUE
01	3.6%
02	13.5%
03	23.1%
04	15.9%
05	43.9%
4. If no cutting takes place, the 10% down payment will not be refunded.
5. Operations on the contract issued will terminate on 12/31/2027.

### **SALE STATISTICS**

Volumes were calculated in cubic feet using the Michigan taper model. Cubic foot volume includes all wood inside bark for the product indicated. For display purposes, cubic feet were converted to cords and MBF using a simple conversion factor, e.g. 79 cubic feet per cord and 185 cubic feet per MBF. The cubic foot volumes are precise; the cords and MBF volumes are not. Cubic foot volume cannot be directly converted to cords or boards with precision.

### **SALE VOLUMES**

The total estimated sale volume may not equal the sum of the species/products due to the nature of statistical calculations associated with double sampling methodology.

VOLUME		STATISTICAL RANGE IN CORDS		
TOTAL CUBIC FEET	TOTAL CORDS	PERCENT ERROR	MINIMUM	MAXIMUM
97,355	1,232	33.21%	823	1,642

**VDU VOLUMES**

A VDU is a Volume Determination Unit. Volumes and their associated statistics are calculated at the VDU level and summarized to the sale level. There is often a one to one relationship between a VDU and a Payment Unit, but not always, depending on the cruise design. Refer to the VDU TO PAYMENT UNIT table.

VDU	VOLUME		PERCENT ERROR	RANGE IN CORDS	
	TOTAL CUBIC FEET	TOTAL CORDS		MINIMUM	MAXIMUM
21	35,717	452	27.08%	330	575
30	15,966	202	54.97%	91	313
31	36,744	465	25.99%	344	586
212	8,928	113	59.27%	46	180
<b>TOTAL:</b>	<b>97,355</b>	<b>1,232</b>		<b>811</b>	<b>1,654</b>

**VDU TO PAYMENT UNIT**

When a VDU is associated with more than one Payment Unit (PU), the VDU volumes are assigned to the PU based on acres of the VDU within the PU.

VDU	VDU ACRES	PU	PU ACRES
21	11.8	2	11.8
30	7.3	4	7.3
31	30.3	3	10.5
		5	19.8
212	5.1	1	5.1
<b>TOTAL:</b>	<b>54.5</b>		<b>54.5</b>

**DESCRIPTION OF TIMBER BY PU (PU)**

PU	MARKET GROUP	PRODUCT	QUANTITY	UNIT	ACRES	ADVERTISE PRICE
1	Paper Birch	Sawtimber	1.3	MBF	5.1	\$1,132.00
	Red Maple		1.9	MBF		
	Balsam Fir	Pulpwood	24	Cords		
	Mixed Hardwood		10	Cords		
	<i>Paper Birch</i>		10	<i>Cords</i>		
	Red Maple		34	Cords		
	White Pine		18	Cords		
	White Spruce		20	Cords		
2	Paper Birch	Sawtimber	2.1	MBF	11.8	\$4,202.50
	Red Maple		15.0	MBF		
	Mixed Hardwood	Pulpwood	28	Cords		
	<i>Paper Birch</i>		28	<i>Cords</i>		
	Quaking Aspen		20	Cords		
	Red Maple		148	Cords		
	White Pine		15	Cords		
	White Spruce		201	Cords		
3	Red Maple	Sawtimber	0.3	MBF	10.5	\$7,175.20
	Jack Pine	Pulpwood	1	Cords		
	Red Maple		2	Cords		
	Red Pine		157	Cords		
4	Black Cherry	Sawtimber	2.7	MBF	7.3	\$4,940.30
	Red Maple		15.1	MBF		
	Balsam Fir	Pulpwood	3	Cords		
	Mixed Hardwood		6	Cords		
	<i>Beech</i>		4	<i>Cords</i>		
	<i>Black Cherry</i>		2	<i>Cords</i>		
	Quaking Aspen		18	Cords		
	Red Maple		66	Cords		
	Red Pine		64	Cords		
	White Pine		2	Cords		
5	Red Maple	Sawtimber	0.6	MBF	19.8	\$13,580.30
	Jack Pine	Pulpwood	2	Cords		
	Red Maple		4	Cords		
	Red Pine		297	Cords		
TOTAL:			39.0	MBF		
TOTAL:			1,140	Cords		

## Sale Specific Conditions & Requirements

Sale Name: Coal Bucket Pine

Sale Number: 42-001-24 Seq#: 1

### 1 - Sale Area

#### 1.2 - Boundaries

##### 1.2.1 - Painted boundaries (9/19)

The sale boundary and Payment Unit boundaries are marked and identified by red and yellow paint. Exterior sale boundary lines against state are marked with red paint. Interior Payment Unit boundaries are marked with yellow paint. The painted boundary line trees are not Included Timber and are to be protected unless marked with orange paint. Yellow painted trees designating an interior Payment Unit boundary are only to be cut when all surrounding Payment Units have been paid.

### 2 - Timber Specifications

#### 2.1 - Included Timber

##### 2.1.1 - Clearcut unit(s) with unmerchantable trees (6/14)

Within Payment Unit(s) 1-2 and 4, cut all trees that are two (2) inches or more at DBH. This is to facilitate planting operations.

##### 2.1.3 - Cut tree marked unit(s) (12/08)

Within Payment Unit(s) 3 and 5, all trees are designated for cutting when marked with orange paint above and below stump height, regardless of merchantability.

#### 2.2 - Utilization

##### 2.2.3 - Stump heights (4/07)

Stump heights within Payment Unit(s) 1-2 and 4 shall not exceed 8 inches for trees greater than 10 inches DBH and 4 inches for trees smaller than 10 inches DBH. This is in order to facilitate planting operations. A written waiver of this requirement may be obtained if wet summer weather makes winter logging necessary.

### 4 - Transportation

#### 4.1 - Construction

##### 4.1.12 - No new roads (1/12)

No new roads will be permitted in any Payment Unit. All operations are limited to existing roads. Skid trails only will be allowed.

#### 4.2 - Maintenance

##### 4.2.3 - Road maintenance (8/13)

The following road maintenance may be needed: Within 60 days of completion of hauling, or if no hauling occurs for 60 days, the road must be maintained and graded. This includes cleaning of drainage areas, grading, crowning and filling with gravel, if necessary. Damages will be assessed if grading/repair does not occur.

##### 4.2.5 - Two wheel drive condition (2/04)

All existing trail roads on and adjacent to the sale area must be passable by two-wheel drive traffic for the duration of the sale.

### 5 - Operations

#### 5.2 - Conduct of Operations

##### 5.2.1 - Slash

##### 5.2.1.8 - Slash height (12/08)

No slash or tree tops may exceed 24 inches in height. This is to facilitate planting operations.

#### 5.2.1.11 - Slash for reforestation (3/21)

To facilitate reforestation, Payment Unit(s) 1-2 and 4 shall be left with slash evenly distributed. Bunched tops within the cutting area shall be broken up and scattered. Stumps shall be cut low to the ground. Processing sites shall not be left with a compacted layer of slash; tops from these sites shall be hauled back into the cut area and scattered.

### 5.2.3 - Operating Restrictions

#### 5.2.3.6 - Bark beetle restriction (12/08)

In the event drought creates a high risk of pine bark beetle infestation, pine is not to be cut during the period March 1 through July 1, unless all portions of trees greater than two inches in diameter are removed from the sale area, reduced to chips, or treated to the satisfaction of the Unit Manager or his/her representative, within fifteen days of being severed from the stump. Pine log decks, pulpwood piles and treetops that are piled for chipping in the fall or winter within a 1/4 mile of susceptible sites must be removed before March 15. Residual slash must not be placed in piles or rows and must be spread over the site for quick drying. The Department of Natural Resources will exercise this specification if the risk of damage warrants.

#### 5.2.20 - Equipment width (2/04)

Equipment used to remove trees within rows must be capable of moving through cut rows without damaging residual trees.

#### 5.2.32 - Decking/landing restoration (9/13)

All decking and landing areas must have the surface area restored to a condition equal to or better than before. This is to ensure the proper regeneration of the stand. Wood debris, chips and "cookies" from trimmings must be removed or scattered away from landing and loading areas and may not be windrowed on the edge. This is to facilitate planting operations.

#### 5.2.38 - No decking against live trees (2/04)

Cut products may not be decked against unmarked or designated leave trees.

### 5.4 - Soil Protection

#### 5.4.1 - Rutting restriction, general (7/16)

Operations are to cease immediately if equipment and weather conditions result in rutting of roads and/or skid trails which is 12 inches or greater in depth and 50 feet in length. The Unit Manager or his/her representative may restrict hauling and/or skidding if ruts exceed the specified depth. With the Unit Manager or his/her representative's approval, the Purchaser may return to the area when the risk of rutting has decreased.

#### 5.4.5 - Soil caution (11/04)

Care must be taken to minimize soil damage due to the sandy soils.

### 5.8 - Protection of Endangered Species

#### 5.8.5 - Protection of raptor nests (3/13)

All trees with raptor nests will be protected if found during harvesting operations. Notification will be made to the Unit Manager or his/her representative who will notify the Wildlife Biologist so an on-site evaluation and recommendation can be made, if necessary.

## 6 - Safety and Fire Prevention

### 6.2 - Signing

#### 6.2.3 - Recreational trail posting (10/20)

The Purchaser is responsible for posting and maintaining caution signs on Silver Creek ORV Trail/Camp Six Road prior to beginning operations. The trail must be posted at appropriate distances from the Sale Area to warn of logging activity and truck traffic at both ends of the trail. Signs must be removed when harvest operations are suspended or completed. The Purchaser will provide these signs.

## 7 - Other Conditions

### 7.3 - Contract Modifications

#### 7.3.3 - Modification for reforestation (8/05)

When contractual work of Purchaser has been accepted for any Payment Unit identified on Sale Area Map, Payment Unit

will be eliminated from the Sale Area on written notice so that reforestation operations can begin.



### TIMBER SALE MAP

This information provided by authority of Part 525, 1994 PA 451, as amended.

Sale Number	Date
42-001-24	03/22/2024

Forest Management Unit	County	Mapped By: <b>A. Ciaramitaro</b>	Scale	Page	Of
<b>Newberry Mgt Unit</b>	<b>Luce</b>	Cruised By: Newberry Unit Staff	1:10,000	1	1

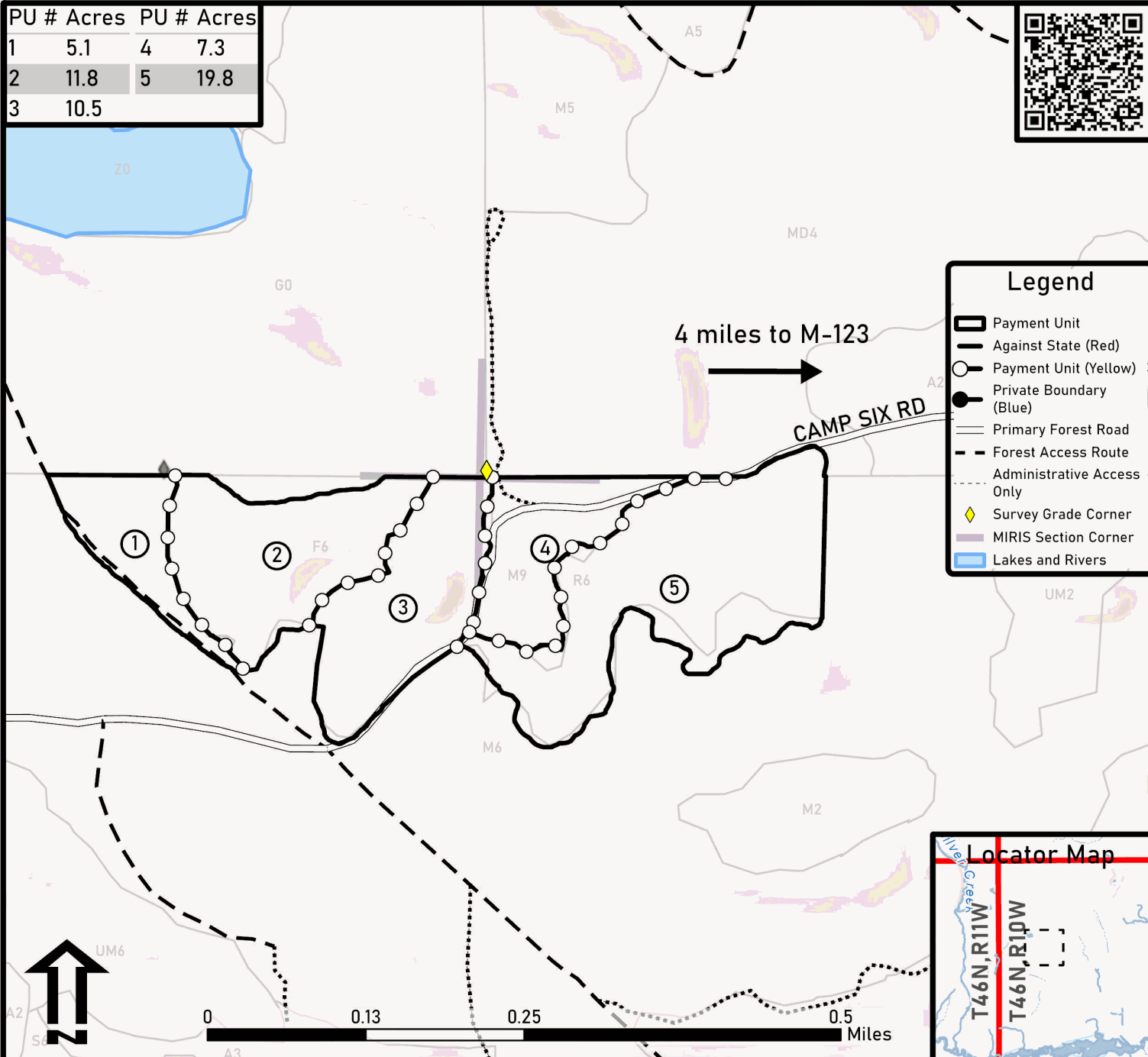
Township	Range	Section(s) and Subdivision(s)
46N	10W	Sec. 17 N1/2NW; Sec. 18 N1/2NE; Sec. 8 S1/2SW;

Cover Type			
A = Aspen	J = Jack Pine	O = Oak	U = Upland Brush
B = Paper Birch	K = Rock	P = Lowland Poplar	UM = Upland Mix Forest
C = Cedar	L = Lowland Brush	Q = Mixed Swamp Conifer	V = Bog or Marsh
D = Treed Bog	LM = Lowland Mix Forest	R = Red Pine	W = White Pine
E = Swamp Hardwoods	M = Maple, Beech, Birch	S = Black Spruce	X = Non Stocked
F = Spruce/Fir	MC = Mixed Conifer	T = Tamarack	Y = Sand
G = Grass	MD = Mixed Deciduous		Z = Water
H = Hemlock	N = Marsh		

Density	
0 = Non Stocked	5 = Pole Timber Medium
1 = Seedling Sapling Poor	6 = Pole Timber Well
2 = Seedling Sapling Medium	7 = Saw Timber Poor
3 = Seedling Sapling Well	8 = Saw Timber Medium
4 = Pole Timber Poor	9 = Saw Timber Well

*Coal Bucket Pine*  
 Compartment: 42112 Acres: 54.5

PU #	Acres	PU #	Acres
1	5.1	4	7.3
2	11.8	5	19.8
3	10.5		



Legend	
	Payment Unit
	Against State (Red)
	Payment Unit (Yellow)
	Private Boundary (Blue)
	Primary Forest Road
	Forest Access Route
	Administrative Access Only
	Survey Grade Corner
	MIRIS Section Corner
	Lakes and Rivers

