



**DEPARTMENT OF NATURAL RESOURCES
STATE OF MICHIGAN
TIMBER SALE PROSPECTUS #7534**

SCHEDULED SALE DATE AND TIME: **10:00 a.m. (local time) on January 21, 2025.**

LOCATION: **ATLANTA MGMT UNIT, 13501 M 33, ATLANTA, MI 49709.**

CONTACT NAME: Matt Foster

PHONE NUMBER: (989) 619-5921

PROSPECTUS NOTE: The bidder is advised to inspect the sale area and review the location, estimated volumes, operating costs and contract terms of proposed sales. Please be aware that some landowners may request 60 days or more notice for access across their land.

Notice is hereby given that bids will be received by the Unit Manager, ATLANTA MANAGEMENT UNIT, for certain timber on the following described lands:

South C70 Aspen Mix (54-033-23) / T32N, R03E, SEC. 18, NENW,S1/2NW,W1/2NE,N1/2SW.

T32N, R03E, SEC. 18, SWSW,SE.

T32N, R03E, SEC. 19, NWNE.

Montmorency County, Advertised Price \$155,242.15, 208.7 Acres, Aspen, Hardwood.

SALE NOTE: -Extensive road work is required. (Placement of 50 yards of 3-inch limestone) Refer to timber sale spec 4.1.8 for details.

-Crane mats may be needed for hauling. Refer to timber sale spec 5.2.17 for details.

-There is an Oak Wilt Restriction on Payment Units 1-9. Refer to timber sale spec 5.2.3.4 for details.

A recreation site such as a trail, pathway, or campground is within the sale area or the vicinity.

Certain restrictions/specifications may be applicable including time restrictions.

TIMBER SALE INFORMATION

South C70 Aspen Mix (54-033-23)

T32N, R03E, SEC. 18; T32N, R03E, SEC. 19.

Montmorency County (Advertised Price \$155,242.15)

- SALE NOTE: -Extensive road work is required. (Placement of 50 yards of 3-inch limestone) Refer to timber sale spec 4.1.8 for details.
 -Crane mats may be needed for hauling. Refer to timber sale spec 5.2.17 for details.
 -There is an Oak Wilt Restriction on Payment Units 1-9. Refer to timber sale spec 5.2.3.4 for details.

A recreation site such as a trail, pathway, or campground is within the sale area or the vicinity. Certain restrictions/specifications may be applicable including time restrictions.

A timber sale contract for this lump sum, sealed bid timber sale will be awarded to the responsible bidder offering the highest sealed bid price. All units of volume listed below were estimated using the Inventory Manager computer program and the new Michigan taper model. Bids must be at or above the following advertised price for each product and species:

<u>PRODUCTS & SPECIES</u>	<u>ESTIMATED UNITS*</u>	<u>ADVERTISED PRICE</u>
Sawtimber		
Balsam Fir	22.8 MBF	\$ 170.00 / MBF
Mixed Aspen	156.3 MBF	\$ 79.00 / MBF
Red Maple	14.4 MBF	\$ 57.00 / MBF
Red Oak	145.0 MBF	\$ 169.00 / MBF
Red Pine	42.6 MBF	\$ 120.00 / MBF
White Pine	8.3 MBF	\$ 91.00 / MBF
Pulpwood		
Balsam Fir	577 Cords	\$ 16.05 / Cord
Jack Pine	6 Cords	\$ 11.70 / Cord
Mixed Aspen	3,049 Cords	\$ 19.10 / Cord
Mixed Hardwood	881 Cords	\$ 19.45 / Cord
Mixed Oak	691 Cords	\$ 23.45 / Cord
Mixed Spruce	15 Cords	\$ 12.30 / Cord
N. White Cedar	11 Cords	\$ 10.40 / Cord
Red Pine	84 Cords	\$ 35.00 / Cord
White Pine	141 Cords	\$ 26.10 / Cord

* The total volume is statistically estimated within plus (+) or minus (-) 7.15 percent. There are an estimated 6,349 cords on this timber sale, plus or minus 454 cords at the 95% confidence level. The estimated units are final and not subject to adjustment. Prospective bidders are urged to examine this timber and to make their own estimates of quantity and quality.

BOND AND PAYMENT SCHEDULE:

- A bond in the amount of \$7,762.11 to insure faithful performance of the conditions of the contract will be deposited by the successful bidder within 21 days of the sale award.
- Cutting in any sale or unit without the required advance payment would be considered a trespass.
- Total payment must be paid in advance or according to the following schedule :
 - Ten percent (10%) of the sale value must be paid within 21 days of the sale award.
 - The 10% down payment will be credited towards the first unit cut.
 - Payment for each of the following units must be made before cutting begins in that unit:

<u>PAYMENT UNIT NUMBER</u>	<u>PERCENT OF TOTAL SALE VALUE</u>
01	11.6%
02	10.1%
03	8.7%
04	8.8%
05	11.0%
06	10.7%
07	8.8%
08	6.2%
09	8.9%
10	8.0%
11	7.2%

- If no cutting takes place, the 10% down payment will not be refunded.
- Operations on the contract issued will terminate on 06/30/2028.

SALE STATISTICS

Volumes were calculated in cubic feet using the Michigan taper model. Cubic foot volume includes all wood inside bark for the product indicated. For display purposes, cubic feet were converted to cords and MBF using a simple conversion factor, e.g. 79 cubic feet per cord and 185 cubic feet per MBF. The cubic foot volumes are precise; the cords and MBF volumes are not. Cubic foot volume cannot be directly converted to cords or boards with precision.

SALE VOLUMES

The total estimated sale volume may not equal the sum of the species/products due to the nature of statistical calculations associated with double sampling methodology.

VOLUME			STATISTICAL RANGE IN CORDS	
TOTAL CUBIC FEET	TOTAL CORDS	PERCENT ERROR	MINIMUM	MAXIMUM
501,585	6,349	7.15%	5,895	6,803

VDU VOLUMES

A VDU is a Volume Determination Unit. Volumes and their associated statistics are calculated at the VDU level and summarized to the sale level. There is often a one to one relationship between a VDU and a Payment Unit, but not always, depending on the cruise design. Refer to the VDU TO PAYMENT UNIT table.

VDU	VOLUME		PERCENT ERROR	RANGE IN CORDS	
	TOTAL CUBIC FEET	TOTAL CORDS		MINIMUM	MAXIMUM
60	41,880	530	18.81%	430	630
61	292,790	3,706	10.28%	3,325	4,087
64	40,313	510	21.54%	400	620
69	126,602	1,603	13.20%	1,391	1,814
TOTAL:	501,585	6,349		5,547	7,152

VDU TO PAYMENT UNIT

When a VDU is associated with more than one Payment Unit (PU), the VDU volumes are assigned to the PU based on acres of the VDU within the PU.

VDU	VDU ACRES	PU	PU ACRES
60	18.7	2	0.2
60	18.7	3	18.5
61	127.9	1	24.2
61	127.9	2	20.8
61	127.9	3	1.1
61	127.9	4	18.2
61	127.9	5	22.9
61	127.9	6	22.3
61	127.9	7	18.4
64	19.8	8	14.3
64	19.8	9	5.5
69	42.3	9	12.7
69	42.3	10	15.6
69	42.3	11	14.0
TOTAL:	1,099.2		208.7

DESCRIPTION OF TIMBER BY PU (PU)

PU	MARKET GROUP	PRODUCT	QUANTITY	UNIT	ACRES	ADVERTISE PRICE	
1	Mixed Aspen	Sawtimber	14.3	MBF	24.2	\$17,989.70	
	<i>B. T. Aspen</i>		8.5	<i>MBF</i>			
	<i>Quaking Aspen</i>		5.8	<i>MBF</i>			
	Red Maple		0.5	MBF			
	Red Oak		23.0	MBF			
	Red Pine		7.1	MBF			
	White Pine		1.4	MBF			
	Balsam Fir		Pulpwood	25			Cords
	Jack Pine			1			Cords
	Mixed Aspen			343			Cords
	<i>B. T. Aspen</i>			233			<i>Cords</i>
	<i>Quaking Aspen</i>			110			<i>Cords</i>
	Mixed Hardwood			88			Cords
	<i>Black Cherry</i>			3			<i>Cords</i>
	<i>Red Maple</i>			85			<i>Cords</i>
	Mixed Oak	109		Cords			
	<i>Red Oak</i>	109		<i>Cords</i>			
	Red Pine	12	Cords				
	White Pine	12	Cords				
	2	Balsam Fir	Sawtimber	0.2			MBF
Mixed Aspen		12.3		MBF			
<i>B. T. Aspen</i>		7.3		<i>MBF</i>			
<i>Quaking Aspen</i>		5.0		<i>MBF</i>			
Red Maple		0.5		MBF			
Red Oak		20.0		MBF			
Red Pine		6.2		MBF			
White Pine		1.2		MBF			
Balsam Fir		Pulpwood		23	Cords		
Jack Pine				1	Cords		
Mixed Aspen				296	Cords		
<i>B. T. Aspen</i>				200	<i>Cords</i>		
<i>Quaking Aspen</i>				96	<i>Cords</i>		
Mixed Hardwood				76	Cords		
<i>Black Cherry</i>				1	<i>Cords</i>		
<i>Red Maple</i>				75	<i>Cords</i>		
Mixed Oak				96	Cords		
<i>Red Oak</i>				96	<i>Cords</i>		
Red Pine				10	Cords		
White Pine	10		Cords				
3	Balsam Fir	Sawtimber	14.1	MBF	19.6	\$13,517.55	
	Mixed Aspen		0.7	MBF			
	<i>B. T. Aspen</i>		0.4	<i>MBF</i>			
	<i>Quaking Aspen</i>		0.3	<i>MBF</i>			
	Red Maple		4.5	MBF			
	Red Oak		6.3	MBF			
	Red Pine		1.4	MBF			
	White Pine		1.2	MBF			
	Balsam Fir		Pulpwood	113			Cords
	Mixed Aspen			126			Cords
	<i>B. T. Aspen</i>			11			<i>Cords</i>
	<i>Quaking Aspen</i>			115			<i>Cords</i>
	Mixed Hardwood			183			Cords
	<i>Paper Birch</i>			4			<i>Cords</i>
	<i>Red Maple</i>			179			<i>Cords</i>
Mixed Oak	15	Cords					

DESCRIPTION OF TIMBER BY PU (PU), CON'T

PU	MARKET GROUP	PRODUCT	QUANTITY	UNIT	ACRES	ADVERTISE PRICE
3 con't	<i>Red Oak</i>	<i>Pulpwood</i>	15	<i>Cords</i>		
	Mixed Spruce		10	Cords		
	<i>Black Spruce</i>	<i>Sawtimber</i>	1.6	<i>MBF</i>		
	<i>Black Spruce</i>	<i>Pulpwood</i>	7	<i>Cords</i>		
	Red Pine		16	Cords		
	White Pine		25	Cords		
	4	Mixed Aspen	Sawtimber	10.8	MBF	18.2
	<i>B. T. Aspen</i>		6.4	<i>MBF</i>		
	<i>Quaking Aspen</i>		4.4	<i>MBF</i>		
	Red Maple		0.4	MBF		
	Red Oak		17.5	MBF		
	Red Pine		5.4	MBF		
	White Pine		1.0	MBF		
	Balsam Fir	Pulpwood	19	Cords		
	Jack Pine		1	Cords		
	Mixed Aspen		258	Cords		
	<i>B. T. Aspen</i>		175	<i>Cords</i>		
	<i>Quaking Aspen</i>		83	<i>Cords</i>		
	Mixed Hardwood		65	Cords		
	<i>Black Cherry</i>		1	<i>Cords</i>		
	<i>Red Maple</i>		64	<i>Cords</i>		
	Mixed Oak		84	Cords		
	<i>Red Oak</i>		84	<i>Cords</i>		
	Red Pine		9	Cords		
	White Pine		9	Cords		
5	Mixed Aspen	Sawtimber	13.6	MBF	22.9	\$17,064.05
	<i>B. T. Aspen</i>		8.1	<i>MBF</i>		
	<i>Quaking Aspen</i>		5.5	<i>MBF</i>		
	Red Maple		0.4	MBF		
	Red Oak		22.0	MBF		
	Red Pine		6.8	MBF		
	White Pine		1.3	MBF		
	Balsam Fir	Pulpwood	24	Cords		
	Jack Pine		1	Cords		
	Mixed Aspen		324	Cords		
	<i>B. T. Aspen</i>		220	<i>Cords</i>		
	<i>Quaking Aspen</i>		104	<i>Cords</i>		
	Mixed Hardwood		82	Cords		
	<i>Black Cherry</i>		1	<i>Cords</i>		
	<i>Red Maple</i>		81	<i>Cords</i>		
	Mixed Oak		105	Cords		
	<i>Red Oak</i>		105	<i>Cords</i>		
	Red Pine		11	Cords		
	White Pine		11	Cords		
6	Mixed Aspen	Sawtimber	13.2	MBF	22.3	\$16,624.20
	<i>B. T. Aspen</i>		7.8	<i>MBF</i>		
	<i>Quaking Aspen</i>		5.4	<i>MBF</i>		
	Red Maple		0.4	MBF		
	Red Oak		21.4	MBF		
	Red Pine		6.6	MBF		
	White Pine		1.2	MBF		
	Balsam Fir	Pulpwood	23	Cords		
	Jack Pine		1	Cords		
	Mixed Aspen		315	Cords		
	<i>B. T. Aspen</i>		214	<i>Cords</i>		

DESCRIPTION OF TIMBER BY PU (PU), CON'T

PU	MARKET GROUP	PRODUCT	QUANTITY	UNIT	ACRES	ADVERTISE PRICE		
6 con't	<i>Quaking Aspen</i>	<i>Pulpwood</i>	101	<i>Cords</i>				
	Mixed Hardwood		80	Cords				
	<i>Black Cherry</i>		1	<i>Cords</i>				
	<i>Red Maple</i>		79	<i>Cords</i>				
	Mixed Oak		103	Cords				
	<i>Red Oak</i>		103	<i>Cords</i>				
	Red Pine		11	Cords				
	White Pine		11	Cords				
7	Mixed Aspen	Sawtimber	10.9	MBF	18.4	\$13,735.70		
	<i>B. T. Aspen</i>		6.5	<i>MBF</i>				
	<i>Quaking Aspen</i>		4.4	<i>MBF</i>				
	Red Maple		0.4	MBF				
	Red Oak		17.7	MBF				
	Red Pine		5.5	MBF				
	White Pine		1.0	MBF				
	Balsam Fir		Pulpwood	19			Cords	
	Jack Pine			1			Cords	
	Mixed Aspen			260			Cords	
	<i>B. T. Aspen</i>	177		<i>Cords</i>				
	<i>Quaking Aspen</i>	83		<i>Cords</i>				
	Mixed Hardwood	66		Cords				
	<i>Black Cherry</i>	1		<i>Cords</i>				
	<i>Red Maple</i>	65		<i>Cords</i>				
	Mixed Oak	85		Cords				
	<i>Red Oak</i>	85		<i>Cords</i>				
	Red Pine	9	Cords					
	White Pine	9	Cords					
	8	Balsam Fir	Sawtimber	3.4			MBF	14.3
Mixed Aspen		8.3		MBF				
<i>B. T. Aspen</i>		7.1		<i>MBF</i>				
<i>Quaking Aspen</i>		1.2		<i>MBF</i>				
Red Oak		11.1		MBF				
Red Pine		2.6		MBF				
Balsam Fir		Pulpwood		25	Cords			
Mixed Aspen				137	Cords			
<i>B. T. Aspen</i>				90	<i>Cords</i>			
<i>Balsam Poplar</i>				7	<i>Cords</i>			
<i>Quaking Aspen</i>			40	<i>Cords</i>				
Mixed Hardwood			68	Cords				
<i>Sugar Maple</i>			Sawtimber	0.9	<i>MBF</i>			
<i>Red Maple</i>				Pulpwood	53	<i>Cords</i>		
<i>Sugar Maple</i>					13	<i>Cords</i>		
Mixed Oak					66	Cords		
<i>Red (Hybrid) Oak</i>		7	<i>Cords</i>					
<i>Red Oak</i>		59	<i>Cords</i>					
Red Pine		4	Cords					
White Pine		6	Cords					
9	Balsam Fir	Sawtimber	2.4	MBF	18.2	\$13,855.10		
	Mixed Aspen		23.9	MBF				
	<i>B. T. Aspen</i>		14.0	<i>MBF</i>				
	<i>Quaking Aspen</i>		9.9	<i>MBF</i>				
	Red Maple		2.2	MBF				
	Red Oak		4.8	MBF				
	Red Pine		1.0	MBF				
	Balsam Fir		Pulpwood	99			Cords	

DESCRIPTION OF TIMBER BY PU (PU), CON'T

PU	MARKET GROUP	PRODUCT	QUANTITY	UNIT	ACRES	ADVERTISE PRICE	
9 con't	Mixed Aspen	Pulpwood	334	Cords			
	<i>B. T. Aspen</i>		153	<i>Cords</i>			
	<i>Balsam Poplar</i>		7	<i>Cords</i>			
	<i>Quaking Aspen</i>		174	<i>Cords</i>			
	Mixed Hardwood		71	Cords			
	<i>Sugar Maple</i>		<i>Sawtimber</i>	0.4			<i>MBF</i>
	<i>Beech</i>		<i>Pulpwood</i>	1			<i>Cords</i>
	<i>Black Cherry</i>			1			<i>Cords</i>
	<i>Red Maple</i>			56			<i>Cords</i>
	<i>Sugar Maple</i>			12			<i>Cords</i>
	Mixed Oak			26			Cords
	<i>Red (Hybrid) Oak</i>			3			<i>Cords</i>
	<i>Red Oak</i>			23			<i>Cords</i>
	Mixed Spruce			2			Cords
	<i>White Spruce</i>			2			<i>Cords</i>
	N. White Cedar			3			Cords
	<i>N. White Cedar</i>		<i>Sawtimber</i>	0.7			<i>MBF</i>
	<i>N. White Cedar</i>		<i>Pulpwood</i>	2			<i>Cords</i>
	Red Pine			2			Cords
	White Pine			16			Cords
10	Balsam Fir	Sawtimber	1.4	MBF	15.6	\$12,418.10	
	Mixed Aspen		25.5	MBF			
	<i>B. T. Aspen</i>		13.8	<i>MBF</i>			
	<i>Quaking Aspen</i>		11.7	<i>MBF</i>			
	Red Maple		2.7	MBF			
	Red Oak		0.6	MBF			
	Balsam Fir		Pulpwood	109			Cords
	Mixed Aspen			345			Cords
	<i>B. T. Aspen</i>			146			<i>Cords</i>
	<i>Balsam Poplar</i>			6			<i>Cords</i>
	<i>Quaking Aspen</i>			193			<i>Cords</i>
	Mixed Hardwood			54			Cords
	<i>Beech</i>			2			<i>Cords</i>
	<i>Black Cherry</i>			1			<i>Cords</i>
	<i>Red Maple</i>			43			<i>Cords</i>
	<i>Sugar Maple</i>			8			<i>Cords</i>
	Mixed Oak			1			Cords
	<i>Red Oak</i>			1			<i>Cords</i>
	Mixed Spruce			1			Cords
	<i>White Spruce</i>			1			<i>Cords</i>
N. White Cedar	4	Cords					
<i>N. White Cedar</i>	<i>Sawtimber</i>	0.9		<i>MBF</i>			
<i>N. White Cedar</i>	<i>Pulpwood</i>	2		<i>Cords</i>			
White Pine		17		Cords			
11	Balsam Fir	Sawtimber		1.3	MBF	14.0	\$11,188.15
	Mixed Aspen			22.8	MBF		
	<i>B. T. Aspen</i>		12.4	<i>MBF</i>			
	<i>Quaking Aspen</i>		10.4	<i>MBF</i>			
	Red Maple		2.4	MBF			
	Red Oak		0.6	MBF			
	Balsam Fir		Pulpwood	98	Cords		
	Mixed Aspen			311	Cords		
	<i>B. T. Aspen</i>			131	<i>Cords</i>		
	<i>Balsam Poplar</i>			6	<i>Cords</i>		
<i>Quaking Aspen</i>	174	<i>Cords</i>					

DESCRIPTION OF TIMBER BY PU (PU), CON'T

PU	MARKET GROUP	PRODUCT	QUANTITY	UNIT	ACRES	ADVERTISE PRICE
11 con't	Mixed Hardwood	Pulpwood	48	Cords		
	<i>Beech</i>		1	<i>Cords</i>		
	<i>Black Cherry</i>		1	<i>Cords</i>		
	<i>Red Maple</i>		39	<i>Cords</i>		
	<i>Sugar Maple</i>		7	<i>Cords</i>		
	Mixed Oak		1	Cords		
	<i>Red Oak</i>		1	<i>Cords</i>		
	Mixed Spruce		2	Cords		
	<i>White Spruce</i>		2	<i>Cords</i>		
	N. White Cedar		4	Cords		
	<i>N. White Cedar</i>	<i>Sawtimber</i>	0.8	<i>MBF</i>		
	<i>N. White Cedar</i>	<i>Pulpwood</i>	2	<i>Cords</i>		
	White Pine		15	Cords		
TOTAL:			389.4	MBF		
TOTAL:			5,455	Cords		

Sale Specific Conditions & Requirements

Sale Name: South C70 Aspen Mix

Sale Number: 54-033-23 Seq#: 2

1 - Sale Area

1.2 - Boundaries

1.2.1 - Painted boundaries (9/19)

The sale boundary and Payment Unit boundaries are marked and identified by blue, red, and yellow paint, as well as cover type changes. Exterior sale boundary lines against private property are marked with blue paint. Exterior sale boundary lines against state are marked with red paint, with the exception of some boundaries along Payment Units 4, 5, and 6, which are unpainted and designated by the cover type change to G0 (see Timber Sale Map). Interior Payment Unit boundaries are marked with yellow paint. Retention patches are marked with red paint; no harvesting activities may occur within these areas. The painted boundary line trees are not Included Timber and are to be protected. Yellow painted trees designating an interior Payment Unit boundary are only to be cut when all surrounding Payment Units have been paid.

2 - Timber Specifications

2.1 - Included Timber

2.1.1 - Clearcut unit(s) with unmerchantable trees (6/14)

Within Payment Unit(s) 1-11, cut all trees that are two (2) inches or more at DBH, except do not cut green marked trees.

Special protection trees identified in accordance with condition 3.4.2, within clearcutting unit boundaries, are not Included Timber and are to be protected.

Purple marked habitat trees within Payment Units 1-11 are to be handled as detailed in accordance with condition 5.2.4.7.

3 - Payments

3.3 - Pre-measured Sales

3.3.4 - Dividing payment units (7/14)

Payment Unit(s) \$25,000 in value or greater may be divided at the request of the Purchaser and upon approval of the Unit Manager. Dividing Payment Units is a contract modification which requires a Timber Sale Contract Amendment. There will be only one division per Payment Unit.

3.4 - Damaged Timber

3.4.2 - Special Protection Trees (4/14)

The Purchaser shall not cut live or dead special protection trees within cutting units or clearings. Special protection trees are marked with green paint. If the Purchaser's operations have cut or damaged special protection trees through carelessness, the Purchaser shall pay \$250 as fixed, agreed and liquidated damages for each special protection tree cut or damaged. Such payment does not constitute ownership of the undesignated timber.

4 - Transportation

4.1 - Construction

4.1.2 - Stream crossings, specific (3/11)

The ATV trail creek crossing that is located west of Payment Units 8 and 9, if utilized for the forwarding of wood, will require the installation of a clear-span bridge in accordance with the Michigan Department of Environment, Great Lakes, and Energy (EGLE) permitting. This installation will be performed in accordance with the specifications on the appropriate permits. This stream crossing will not be permitted by the MI DNR. The Payment Units are accessible without the necessity of crossing the stream.

4.1.3 - Slash and earthen piles (8/04)

Piles or windrows of earth along roads and landings that have been widened or constructed shall be leveled. Slash from road

maintenance or construction, including stumps, shall be dispersed throughout the sale.

4.1.6 - Road construction (4/24)

Improvements of existing roads shall be done in such a way as to minimize the environmental and visual impacts. Merchantable trees shall be cut and utilized unless otherwise directed. Non-merchantable trees shall be severed and laid flat on the ground. Slash shall be scattered, and not left in windrows and kept a minimum of 10 feet back from the road edge. Stumps shall be set upright, not left on edge, and be moved at least 10 feet away from the road edge. Disturbed soil shall be feathered into the woods and not left in berms or windrows.

4.1.7 - Road closure (10/11)

All new roads built into the sale must be blocked to vehicle traffic within 30 days of completion of hauling. Overgrown roads that are reopened shall be considered new roads. Administrative access roads must be closed at the completion of sale operations, see the Timber Sale Map for locations. In general, this will require constructing a four (4') foot high berm of stumps and logs covered with earth. These roads must be rendered impassable to cars and trucks. All stumps from road building and landing construction must be reserved to block any newly constructed roads upon completion of the sale. Temporary berms may be required if no sale activity occurs for 30 or more consecutive days. Contact the Sale Administrator for specific details of design and placement.

4.1.8 - Road work (1) (8/07)

The following road work is required: the construction of a forest road, approximately one-quarter mile in length, is required for hauling timber from the south end of Payment Unit 11. The placement of 50 yards of 3-inch limestone, per the Sale Administrator's satisfaction, is required in the forest road at the location identified on the Timber Sale Map before hauling can commence. Refer to the Timber Sale Map for the road construction location and for the limestone placement location.

4.1.11 - Permits (2/12)

The Purchaser will secure any necessary permits that may be required.

5 - Operations

5.2 - Conduct of Operations

5.2.1 - Slash

5.2.1.10 - No slash in openings (5/10)

No brush or logging debris is to be left in the maintained wildlife opening which is indicated by G0 on the Timber Sale Map. Any damage to the opening shall be repaired according to specifications of the Unit Manager or his/her representative.

5.2.2 - Hazard Trees/Snags

5.2.2.1 - Den trees (10/16)

Obvious hollow and/or den trees shall be protected and left standing unless they are a safety hazard.

5.2.3 - Operating Restrictions

5.2.3.4 - Oak wilt restriction, no exceptions (1/18)

Within Payment Unit(s) 1-9, cutting, skidding, hauling within the sale and brushing of access roads to the sale are not permitted during the period of April 15 to July 15. No exceptions will be granted. This is necessary to reduce the spread of oak wilt.

5.2.3.11 - Coppice regeneration protection (4/10)

Timber harvesting in any Payment Unit must be completed before significant deciduous tree sprouting occurs in that Payment Unit so as to minimize damage to the new regeneration. Any post harvest operations, such as chipping, must be completed before sprouting of regeneration occurs. If it is anticipated that chipping will be delayed, then tops shall be carried to one central location or left unchipped. The Unit Manager or his/her representative may cease such operations if sprouting occurs before the operation is complete.

5.2.4 - Dead and Down Creation

5.2.4.7 - Dead and down creation: hare, grouse, deer and other species (5/15)

To improve horizontal cover habitat for snowshoe hare, grouse, deer, and other species, the Purchaser is to push over all

purple ringed trees within Payment Units 1-11, after all designated wood has been forwarded from the Payment Unit. These trees should be tipped over with the root ball still attached so the base of the tree is suspended off the ground. The crown of the fallen tree should be at or near ground level after it is pushed over.

5.2.17 - Timber Mats and Interlocking Composite Mats (5/23)

The new forest road required for hauling timber south from Payment Units 8-11 may require extra protection such as that afforded by timber mats, interlocking composite mats, or another approved system. The location where these mats may be needed is identified on the Timber Sale Map. If available, mats may be borrowed from the DNR. A Timber Sale Contract Amendment will be used to document the Purchaser's use of the DNR's mats. Contact the Sale Administrator regarding availability and pick-up. Timber mats are available from various field offices. Composite mats are only available from the Grayling field office and the Marquette ICC. The Purchaser is responsible for picking up and hauling the mats to and from the site. The composite mats will require DNR staff onsite for installation and removal. Contact the Sale Administrator to schedule at least 30 days before desired install/removal date. All mats must be cleaned prior to drop off. This may include, but is not limited to, power washing and brushing to remove mud and debris. A charge of \$700.00 per timber mat and \$2,000.00 per composite mat will be assessed for all damaged or non-returned mats. Damage for the crane/timber mats is defined as three or more broken cants. Damage for the composite mats is defined as cracked or broken mats.

5.2.32 - Decking/landing restoration (9/13)

All decking and landing areas must have the surface area restored to a condition equal to or better than before. This is to ensure the proper regeneration of the stand. Wood debris, chips and "cookies" from trimmings must be removed or scattered away from landing and loading areas and may not be windrowed on the edge.

5.2.38 - No decking against live trees (2/04)

Cut products may not be decked against unmarked or designated leave trees.

5.2.39 - ORV trail/route protection (4/18)

The Atlanta Trail is an ATV trail and is shown on the Timber Sale Map. Do not cut trees or damage posts with ATV markers. Trees with ATV markers shall be cut off above the markers and at least 5 feet above ground. All stumps within 5 feet of the trail must be cut flush with the ground. Maintain a 20-foot-wide slash, debris, and rut free zone daily using the ATV trail as the centerline. Do not run equipment down the ATV trail or route. Skidding across the trail or route may only occur in locations approved by the Sale Administrator. Utilization of this ATV trail as a stream crossing forwarding route will require temporary road closure postings (refer to sale condition 6.2.3) and permits for a stream crossing (refer to sale condition 4.1.2).

5.3 - Stream Protection

5.3.2 - Parking equipment near water (10/23)

Within Payment Unit(s) 2, 3, 5, and 7-11 the parking of or storage of equipment is prohibited within 100 feet of water bodies or ground water supplies. All equipment, when not in use for harvest operations, must be parked a minimum of 100 feet away from water sources (streams, rivers, lakes, ponds, vernal pools, ground water sources) and 50 feet away from slopes leading to water sources and/or riparian areas. This restriction is for preventing unforeseen oil and/or fluid leaks from contaminating water bodies and/or ground water supplies.

5.4 - Soil Protection

5.4.1 - Rutting restriction, general (7/16)

Operations are to cease immediately if equipment and weather conditions result in rutting of roads and/or skid trails which is 12 inches or greater in depth and 50 feet in length. The Unit Manager or his/her representative may restrict hauling and/or skidding if ruts exceed the specified depth. With the Unit Manager or his/her representative's approval, the Purchaser may return to the area when the risk of rutting has decreased.

5.8 - Protection of Endangered Species

5.8.5 - Protection of raptor nests (3/13)

All trees with raptor nests will be protected if found during harvesting operations. Notification will be made to the Unit Manager or his/her representative who will notify the Wildlife Biologist so an on-site evaluation and recommendation can be made, if necessary.

6 - Safety and Fire Prevention

6.2 - Signing

6.2.1 - Road posting (10/20)

The Purchaser is responsible for posting and maintaining caution signs on forest roads prior to beginning operations. The road must be posted at appropriate distances from the Sale Area to warn of logging activity and truck traffic. Signs must be removed when harvest operations are suspended or completed. The Purchaser will provide these signs.

6.2.3 - Recreational trail posting (10/20)

The Purchaser is responsible for posting and maintaining caution signs on the Atlanta ATV Trail prior to beginning operations. The trail must be posted at appropriate distances from the Sale Area to warn of logging activity and truck traffic at both ends of the trail. Signs must be removed when harvest operations are suspended or completed. The Purchaser will provide these signs.



TIMBER SALE MAP

This information provided by authority of Part 525, 1994 PA 451, as amended.

Sale Number	Date	
54-033-23	11/20/2024	
Scale	Page	Of
1:20,000	1	1

Forest Management Unit	County	Mapped By: D. Parris
Atlanta Mgt Unit	Montmorency	Cruised By: D. Parris

Township	Range	Section(s) and Subdivision(s)
32N	03E	Sec. 18 NENW,S1/2NW,W1/2NE,N1/2SW; Sec. 18 SWSW,SE; Sec. 19 NWNE;

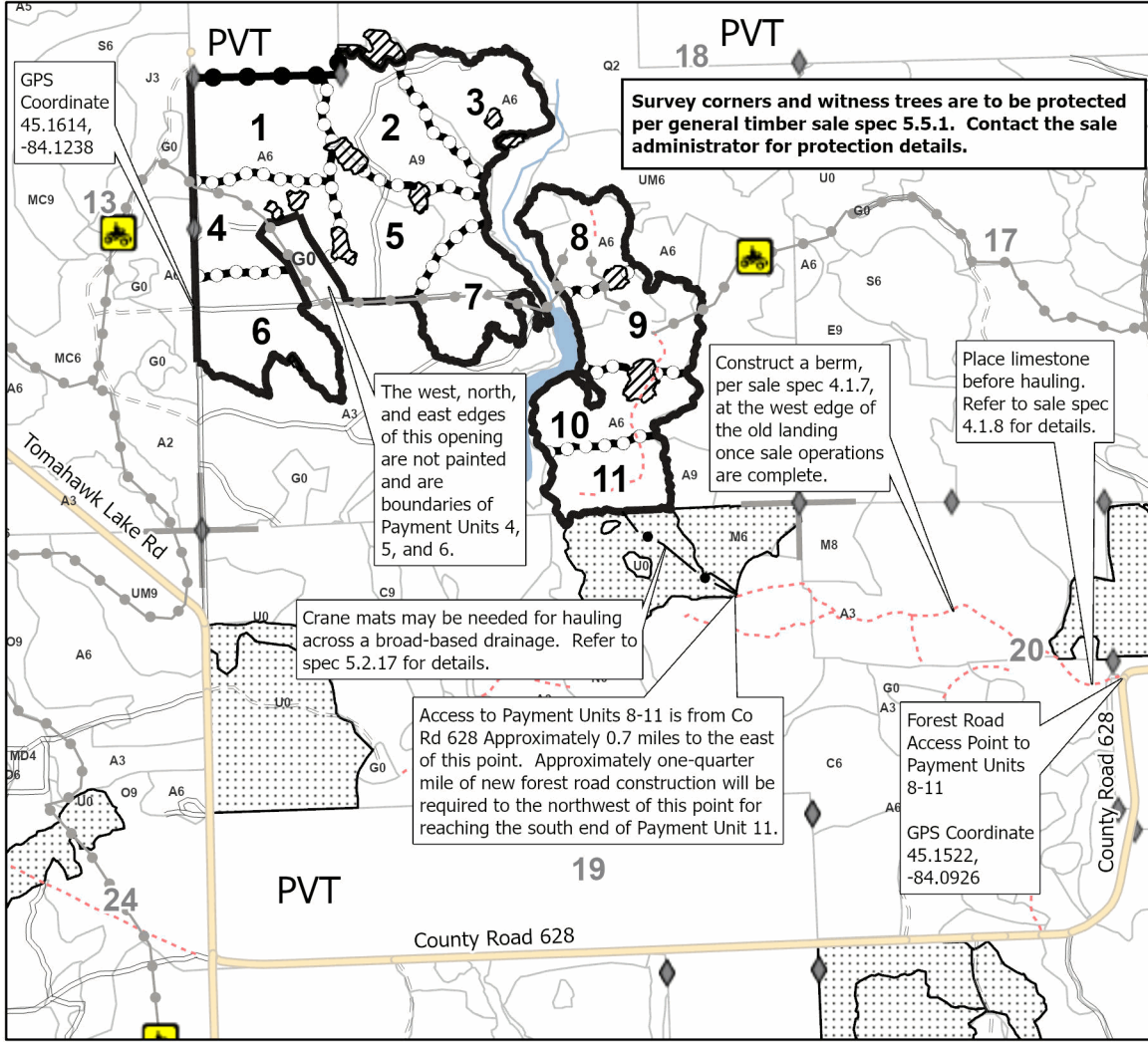
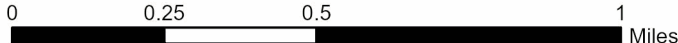
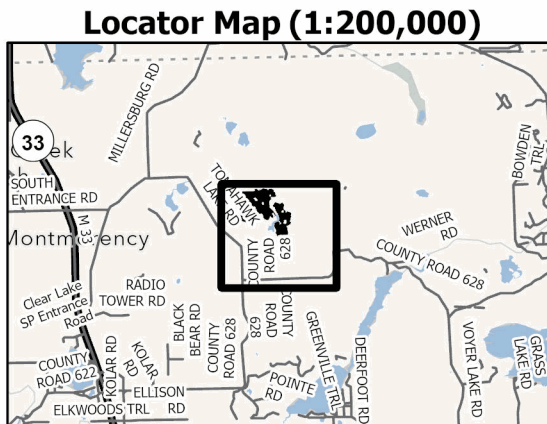
Cover Type			
A = Aspen	J = Jack Pine	O = Oak	U = Upland Brush
B = Paper Birch	K = Rock	P = Lowland Poplar	UM = Upland Mix Forest
C = Cedar	L = Lowland Brush	Q = Mixed Swamp Conifer	V = Bog or Marsh
D = Treed Bog	LM = Lowland Mix Forest	R = Red Pine	W = White Pine
E = Swamp Hardwoods	M = Maple, Beech, Birch	S = Black Spruce	X = Non Stocked
F = Spruce/Fir	MC = Mixed Conifer	T = Tamarack	Y = Sand
G = Grass	MD = Mixed Deciduous	Z = Water	
H = Hemlock	N = Marsh		

Density	
0 = Non Stocked	5 = Pole Timber Medium
1 = Seedling Sapling Poor	6 = Pole Timber Well
2 = Seedling Sapling Medium	7 = Saw Timber Poor
3 = Seedling Sapling Well	8 = Saw Timber Medium
4 = Pole Timber Poor	9 = Saw Timber Well

PU #	Acres	PU #	Acres	PU #	Acres
1	24.2	5	22.9	9	18.2
2	21.0	6	22.3	10	15.6
3	19.6	7	18.4	11	14
4	18.2	8	14.3		

South C70 Aspen Mix

208.7 Acres



Legend

- Against State (Red)
- Payment Unit (Yellow)
- Private Line (Blue)
- ▨ Retention Areas
- ▤ Nearby Timber Sale
- Stand
- Recreational Trail
- New Forest Road Required
- Perennial River
- Secondary Forest Road
- Forest Access Route
- Administrative Access Only
- Non-DNR Road
- ◆ Survey Corner
- Section Corner

Use QR Code to open Map in App

