



**DEPARTMENT OF NATURAL RESOURCES  
STATE OF MICHIGAN  
TIMBER SALE PROSPECTUS #7406**

**SCHEDULED SALE DATE AND TIME: 10:00 a.m. (local time) on April 16, 2024.**

**LOCATION: ATLANTA MGMT UNIT, 13501 M 33, ATLANTA, MI 49709.**

**CONTACT NAME: Matt Foster**

**PHONE NUMBER: (989) 619-5921**

**PROSPECTUS NOTE:** The bidder is advised to inspect the sale area and review the location, estimated volumes, operating costs and contract terms of proposed sales. Please be aware that some landowners may request 60 days or more notice for access across their land.

Notice is hereby given that bids will be received by the Unit Manager, ATLANTA MANAGEMENT UNIT, for certain timber on the following described lands:

Spring Lk and Elk Rd Aspen Oak (54-002-23) / T33N, R02E, SEC. 23, SESE.

T33N, R02E, SEC. 25, SWNW,SW,SWSE.

T33N, R02E, SEC. 26, N1/2NE,SENE,SE.

T33N, R02E, SEC. 35, NWNE.

T33N, R03E, SEC. 30, E1/2SE.

Presque Isle County, Advertised Price \$167,758.95, 168.0 Acres, Hardwood, Red Oak.

SALE NOTE: 5.2.3.1 - Operating restrictions: Within Payment Units 1-10, cutting, skidding, and hauling are limited to the period of August 16 to April 15. This restriction is to limit oak wilt spread (all Payment Units) and protecting adjacent essential and occupied Kirtland's Warbler habitat (Payment Units 1, 2, 3, & 6).

A recreation site such as a trail, pathway, or campground is within the sale area or the vicinity.  
Certain restrictions/specifications may be applicable including time restrictions.

## TIMBER SALE INFORMATION

### Spring Lk and Elk Rd Aspen Oak (54-002-23)

T33N, R02E, SEC. 23; T33N, R02E, SEC. 25; T33N, R02E, SEC. 26; T33N, R02E, SEC. 35; T33N, R03E, SEC. 30.

Presque Isle County (Advertised Price \$167,758.95)

**SALE NOTE: 5.2.3.1 - Operating restrictions:** Within Payment Units 1-10, cutting, skidding, and hauling are limited to the period of August 16 to April 15. This restriction is to limit oak wilt spread (all Payment Units) and protecting adjacent essential and occupied Kirtland's Warbler habitat (Payment Units 1, 2, 3, & 6).

A recreation site such as a trail, pathway, or campground is within the sale area or the vicinity. Certain restrictions/specifications may be applicable including time restrictions.

A timber sale contract for this lump sum, sealed bid timber sale will be awarded to the responsible bidder offering the highest sealed bid price. All units of volume listed below were estimated using the Inventory Manager computer program and the new Michigan taper model. Bids must be at or above the following advertised price for each product and species:

<u>PRODUCTS &amp; SPECIES</u>	<u>ESTIMATED UNITS*</u>		<u>ADVERTISED PRICE</u>
Sawtimber			
Black/Red (Hybrid) Oak	56.7	MBF	\$ 125.00 / MBF
Jack Pine	16.6	MBF	\$ 32.00 / MBF
Mixed Aspen	31.8	MBF	\$ 113.00 / MBF
Red Oak	490.0	MBF	\$ 190.00 / MBF
White Oak	61.4	MBF	\$ 60.00 / MBF
Pulpwood			
Balsam Fir	3	Cords	\$ 20.55 / Cord
Jack Pine	49	Cords	\$ 11.80 / Cord
Mixed Aspen	468	Cords	\$ 25.60 / Cord
Mixed Oak	767	Cords	\$ 30.90 / Cord
Red Maple	48	Cords	\$ 24.85 / Cord
Red Oak	689	Cords	\$ 30.90 / Cord
Red Pine	14	Cords	\$ 40.45 / Cord
White Pine	14	Cords	\$ 28.05 / Cord

\* The total volume is statistically estimated within plus (+) or minus (-) 10.29 percent. There are an estimated 3,594 cords on this timber sale, plus or minus 370 cords at the 95% confidence level. The estimated units are final and not subject to adjustment. Prospective bidders are urged to examine this timber and to make their own estimates of quantity and quality.

### **BOND AND PAYMENT SCHEDULE:**

1. A bond in the amount of \$8,387.95 to insure faithful performance of the conditions of the contract will be deposited by the successful bidder within 21 days of the sale award.
2. Cutting in any sale or unit without the required advance payment would be considered a trespass.
3. Total payment must be paid in advance or according to the following schedule :
  - (a) Ten percent (10%) of the sale value must be paid within 21 days of the sale award.
  - (b) The 10% down payment will be credited towards the first unit cut.
  - (c) Payment for each of the following units must be made before cutting begins in that unit:

<u>PAYMENT UNIT NUMBER</u>	<u>PERCENT OF TOTAL SALE VALUE</u>
01	19.0%
02	21.9%
03	10.6%
04	10.6%
05	13.4%
06	3.2%
07	10.5%
08	2.0%
09	2.2%
10	6.6%

4. If no cutting takes place, the 10% down payment will not be refunded.
5. Operations on the contract issued will terminate on 06/30/2027.

### **SALE STATISTICS**

Volumes were calculated in cubic feet using the Michigan taper model. Cubic foot volume includes all wood inside bark for the product indicated. For display purposes, cubic feet were converted to cords and MBF using a simple conversion factor, e.g. 79 cubic feet per cord and 185 cubic feet per MBF. The cubic foot volumes are precise; the cords and MBF volumes are not. Cubic foot volume cannot be directly converted to cords or boards with precision.

## SALE VOLUMES

The total estimated sale volume may not equal the sum of the species/products due to the nature of statistical calculations associated with double sampling methodology.

VOLUME			STATISTICAL RANGE IN CORDS	
TOTAL CUBIC FEET	TOTAL CORDS	PERCENT ERROR	MINIMUM	MAXIMUM
283,955	3,594	10.29%	3,224	3,964

## VDU VOLUMES

A VDU is a Volume Determination Unit. Volumes and their associated statistics are calculated at the VDU level and summarized to the sale level. There is often a one to one relationship between a VDU and a Payment Unit, but not always, depending on the cruise design. Refer to the VDU TO PAYMENT UNIT table.

	VOLUME			RANGE IN CORDS	
VDU	TOTAL CUBIC FEET	TOTAL CORDS	PERCENT ERROR	MINIMUM	MAXIMUM
12	33,414	423	23.33%	324	522
20	4,694	59	61.98%	23	96
28	24,973	316	36.83%	200	433
31	14,396	182	54.31%	83	281
32	19,796	251	33.34%	167	334
40	96,325	1,219	18.55%	993	1,445
56	90,357	1,144	16.97%	950	1,338
<b>TOTAL:</b>	<b>283,955</b>	<b>3,594</b>		<b>2,740</b>	<b>4,449</b>

## VDU TO PAYMENT UNIT

When a VDU is associated with more than one Payment Unit (PU), the VDU volumes are assigned to the PU based on acres of the VDU within the PU.

VDU	VDU ACRES	PU	PU ACRES
12	26.4	9	7.1
		10	19.3
20	8.3	10	8.3
28	11.6	7	11.6
31	9.7	6	9.7
32	12.9	7	8.4
		8	4.5
40	61.2	3	18.8
		4	18.7
		5	23.7
56	37.9	1	17.6
		2	20.3
<b>TOTAL:</b>	<b>168.0</b>		<b>168.0</b>

**DESCRIPTION OF TIMBER BY PU (PU)**

PU	MARKET GROUP	PRODUCT	QUANTITY	UNIT	ACRES	ADVERTISE PRICE
1	Red Oak	Sawtimber	130.7	MBF	17.6	\$31,884.95
	Balsam Fir	Pulpwood	1	Cords		
	Mixed Aspen		51	Cords		
	<i>B. T. Aspen</i>		28	<i>Cords</i>		
	<i>Balsam Poplar</i>		23	<i>Cords</i>		
	Red Oak		172	Cords		
	Red Pine		6	Cords		
	<i>Red Pine</i>	<i>Sawtimber</i>	2.5	<i>MBF</i>		
	<i>Red Pine</i>	<i>Pulpwood</i>	1	<i>Cords</i>		
	White Pine		6	Cords		
	<i>White Pine</i>	<i>Sawtimber</i>	2.6	<i>MBF</i>		
	<i>White Pine</i>	<i>Pulpwood</i>	1	<i>Cords</i>		
2	Red Oak	Sawtimber	150.8	MBF	20.3	\$36,891.05
	Balsam Fir	Pulpwood	2	Cords		
	Mixed Aspen		59	Cords		
	<i>B. T. Aspen</i>		32	<i>Cords</i>		
	<i>Balsam Poplar</i>		27	<i>Cords</i>		
	Red Oak		200	Cords		
	Red Pine		7	Cords		
	<i>Red Pine</i>	<i>Sawtimber</i>	2.8	<i>MBF</i>		
	<i>Red Pine</i>	<i>Pulpwood</i>	1	<i>Cords</i>		
	White Pine		8	Cords		
	<i>White Pine</i>	<i>Sawtimber</i>	3.1	<i>MBF</i>		
	<i>White Pine</i>	<i>Pulpwood</i>	2	<i>Cords</i>		
3	Black/Red (Hybrid	Sawtimber	3.9	MBF	18.8	\$17,864.40
	Jack Pine		0.3	MBF		
	Red Oak		56.7	MBF		
	White Oak		10.4	MBF		
	Jack Pine	Pulpwood	1	Cords		
	Mixed Aspen		21	Cords		
	<i>B. T. Aspen</i>		21	<i>Cords</i>		
	Mixed Oak		85	Cords		
	<i>/Red (Hybrid) Oak</i>		42	<i>Cords</i>		
	<i>White Oak</i>		43	<i>Cords</i>		
	Red Maple		8	Cords		
	<i>Red Maple</i>	<i>Sawtimber</i>	0.8	<i>MBF</i>		
	<i>Red Maple</i>	<i>Pulpwood</i>	6	<i>Cords</i>		
	Red Oak		84	Cords		
4	Black/Red (Hybrid	Sawtimber	3.9	MBF	18.7	\$17,776.50
	Jack Pine		0.3	MBF		
	Red Oak		56.4	MBF		
	White Oak		10.4	MBF		
	Jack Pine	Pulpwood	1	Cords		
	Mixed Aspen		21	Cords		
	<i>B. T. Aspen</i>		21	<i>Cords</i>		
	Mixed Oak		84	Cords		
	<i>/Red (Hybrid) Oak</i>		42	<i>Cords</i>		
	<i>White Oak</i>		42	<i>Cords</i>		
	Red Maple		8	Cords		
	<i>Red Maple</i>	<i>Sawtimber</i>	0.8	<i>MBF</i>		
	<i>Red Maple</i>	<i>Pulpwood</i>	6	<i>Cords</i>		
	Red Oak		84	Cords		
5	Black/Red (Hybrid	Sawtimber	4.9	MBF	23.7	\$22,516.45
	Jack Pine		0.4	MBF		
	Red Oak		71.5	MBF		

**DESCRIPTION OF TIMBER BY PU (PU), CON'T**

PU	MARKET GROUP	PRODUCT	QUANTITY	UNIT	ACRES	ADVERTISE PRICE
5 con't	White Oak	Sawtimber	13.1	MBF		
	Jack Pine	Pulpwood	2	Cords		
	Mixed Aspen		27	Cords		
	<i>B. T. Aspen</i>		27	<i>Cords</i>		
	Mixed Oak		107	Cords		
	<i>/Red (Hybrid) Oak</i>		53	<i>Cords</i>		
	<i>White Oak</i>		54	<i>Cords</i>		
	Red Maple		9	Cords		
	<i>Red Maple</i>	<i>Sawtimber</i>	1.0	<i>MBF</i>		
	<i>Red Maple</i>	<i>Pulpwood</i>	7	<i>Cords</i>		
	Red Oak		106	Cords		
6	Black/Red (Hybrid	Sawtimber	1.1	MBF	9.7	\$5,331.15
	Mixed Aspen		7.0	MBF		
	<i>B. T. Aspen</i>		3.3	<i>MBF</i>		
	<i>Quaking Aspen</i>		3.7	<i>MBF</i>		
	Red Oak		1.5	MBF		
	White Oak		1.4	MBF		
	Jack Pine	Pulpwood	10	Cords		
	Mixed Aspen		129	Cords		
	<i>B. T. Aspen</i>		65	<i>Cords</i>		
	<i>Quaking Aspen</i>		64	<i>Cords</i>		
	Mixed Oak		5	Cords		
	<i>/Red (Hybrid) Oak</i>		1	<i>Cords</i>		
	<i>White Oak</i>		4	<i>Cords</i>		
	Red Maple		11	Cords		
	<i>Red Maple</i>	<i>Sawtimber</i>	1.2	<i>MBF</i>		
	<i>Red Maple</i>	<i>Pulpwood</i>	9	<i>Cords</i>		
	Red Oak		6	Cords		
7	Black/Red (Hybrid	Sawtimber	7.3	MBF	20.0	\$17,537.15
	Mixed Aspen		16.6	MBF		
	<i>B. T. Aspen</i>		16.6	<i>MBF</i>		
	Red Oak		18.7	MBF		
	White Oak		21.8	MBF		
	Jack Pine	Pulpwood	3	Cords		
	Mixed Aspen		92	Cords		
	<i>B. T. Aspen</i>		77	<i>Cords</i>		
	<i>Quaking Aspen</i>		15	<i>Cords</i>		
	Mixed Oak		203	Cords		
	<i>/Red (Hybrid) Oak</i>		68	<i>Cords</i>		
	<i>White Oak</i>		135	<i>Cords</i>		
	Red Maple		7	Cords		
	<i>Red Maple</i>		7	<i>Cords</i>		
	Red Oak		34	Cords		
8	Black/Red (Hybrid	Sawtimber	2.9	MBF	4.5	\$3,275.95
	Mixed Aspen		7.0	MBF		
	<i>B. T. Aspen</i>		7.0	<i>MBF</i>		
	Red Oak		2.0	MBF		
	White Oak		1.5	MBF		
	Jack Pine	Pulpwood	1	Cords		
	Mixed Aspen		31	Cords		
	<i>B. T. Aspen</i>		23	<i>Cords</i>		
	<i>Quaking Aspen</i>		8	<i>Cords</i>		
	Mixed Oak		23	Cords		
	<i>/Red (Hybrid) Oak</i>		18	<i>Cords</i>		
	<i>White Oak</i>		5	<i>Cords</i>		

**DESCRIPTION OF TIMBER BY PU (PU), CON'T**

PU	MARKET GROUP	PRODUCT	QUANTITY	UNIT	ACRES	ADVERTISE PRICE
8 con't	Red Maple	Pulpwood	3	Cords		
	<i>Red Maple</i>		3	<i>Cords</i>		
	Red Oak		2	Cords		
9	Black/Red (Hybrid	Sawtimber	8.8	MBF	7.1	\$3,634.65
	Jack Pine		1.4	MBF		
	Mixed Aspen		0.3	MBF		
	<i>Quaking Aspen</i>		0.3	<i>MBF</i>		
	Red Oak	Pulpwood	0.5	MBF		
	White Oak		0.8	MBF		
	Jack Pine		2	Cords		
	Mixed Aspen		10	Cords		
	<i>B. T. Aspen</i>		10	<i>Cords</i>		
	Mixed Oak		65	Cords		
	<i>/Red (Hybrid) Oak</i>		63	<i>Cords</i>		
	<i>White Oak</i>		2	<i>Cords</i>		
	Red Maple		1	Cords		
	<i>Red Maple</i>		1	<i>Cords</i>		
10	Black/Red (Hybrid	Sawtimber	23.9	MBF	27.6	\$11,071.55
	Jack Pine		14.2	MBF		
	Mixed Aspen		0.9	MBF		
	<i>Quaking Aspen</i>		0.9	<i>MBF</i>		
	Red Oak	Pulpwood	1.2	MBF		
	White Oak		2.0	MBF		
	Jack Pine		29	Cords		
	Mixed Aspen		27	Cords		
	<i>B. T. Aspen</i>		26	<i>Cords</i>		
	<i>Quaking Aspen</i>		1	<i>Cords</i>		
	Mixed Oak		195	Cords		
	<i>/Red (Hybrid) Oak</i>		189	<i>Cords</i>		
	<i>White Oak</i>		6	<i>Cords</i>		
	Red Maple		2	Cords		
	<i>Red Maple</i>		2	<i>Cords</i>		
	Red Oak		1	Cords		
	Red Pine		1	Cords		
	<i>Red Pine</i>		1	<i>Cords</i>		
TOTAL:			656.5	MBF		
TOTAL:			2,053	Cords		

## **Sale Specific Conditions & Requirements**

**Sale Name: Spring Lk and Elk Rd Aspen Oak**

**Sale Number: 54-002-23 Seq#: 2**

### **1 - Sale Area**

#### **1.2 - Boundaries**

##### **1.2.1 - Painted boundaries (9/19)**

The sale boundary and Payment Unit boundaries are marked and identified by blue, red and yellow paint. Exterior sale boundary lines against state are marked with red paint. Exterior sale boundary lines against private are marked with blue paint. The painted boundary line trees are not Included Timber and are to be protected. Yellow painted trees designating an interior Payment Unit boundary are only to be cut when all surrounding Payment Units have been paid.

### **2 - Timber Specifications**

#### **2.1 - Included Timber**

##### **2.1.1 - Clearcut unit(s) with unmerchantable trees (6/14)**

Within Payment Unit(s) 1-10, cut all trees that are two (2) inches or more at DBH, with the following exceptions:

- Within Payment Units 1 & 2, do not cut any trees marked with purple paint.
- Within Payment Units 3-5, do not cut any white pine or red pine.

Note: See spec 5.2.4.7 - 'Dead and down creation' for instructions on orange marked trees.

#### **2.2 - Utilization**

##### **2.2.2 - Chipping required (2/18)**

Payment Units 1 & 2 must be chip harvested to facilitate subsequent planting operations. The Purchaser has the option to produce sawlogs or pulpwood bolts, but the remaining portion of the trees must be chipped and hauled. Products may be produced as roundwood and forwarded to decking areas in final product length, but the tops must be left intact and skidded to the landing for chipping in order to minimize the amount of residual slash. If market conditions limit the practicality of chipping the following is required:

- Tops must be cut into lengths 4 feet or less and trees greater than 4 inches at DBH must be cut to a 2-inch top or smaller.
- Sub-merchantable trees, and hardwood limbs 4 inches or greater where they attach to the stem, are to be cut/reduced to 4-foot lengths.
- Tops and slash must also be spread evenly across the sale. This is to speed the breakdown of tops/slash and not impede planting operations.
- Retain approximately 1/6 to 1/3 of treetops and limbs less than four inches in diameter is still applicable (G. C. & R. 2.2).

To not delay follow-up cultivation work, this work must be completed within 60 days of severing stems. No additional Payment Units can be entered until these Payment Units are considered complete and in compliance with specification 2.2.2.

##### **2.2.3 - Stump heights (4/07)**

Stump heights within Payment Units 1 & 2 shall not exceed 6 inches for all trees. This is in order to facilitate planting operations.

### **3 - Payments**

#### **3.3 - Pre-measured Sales**

##### **3.3.4 - Dividing payment units (7/14)**

Payment Unit(s) may be divided at the request of the Purchaser and upon approval of the Unit Manager. Dividing Payment Units is a contract modification which requires a Timber Sale Contract Amendment. Payment Units valued over \$25,000 may be divided. There will be only one division per Payment Unit.

### 3.4 - Damaged Timber

#### 3.4.1 - Damaged timber (7/16)

General Condition and Requirement 3.4 Damaged Timber, defines liquidated damages for undesignated live merchantable trees which are cut or injured. In addition, extreme care should be taken to avoid damage to tree seedlings and saplings. Within Payment Units 3-5, 7, 9, & 10, operations must avoid damaging tree seedlings or saplings (1/4" to 2" DBH) as much as operationally possible.

No damage is acceptable to undesignated live merchantable trees. Within the Sale Area, if more than 5% of trees (> 4.5" DBH) within a specified area of the sale are damaged, liquidated damages will be assessed for all trees damaged. Rates will be in accordance with General Condition and Requirement 3.4 Damaged Timber.

## 4 - Transportation

### 4.1 - Construction

#### 4.1.3 - Slash and earthen piles (8/04)

Piles or windrows of earth along roads and landings that have been widened or constructed shall be leveled. Slash from road maintenance or construction, including stumps, shall be chipped, utilized or otherwise removed from the sale.

#### 4.1.6 - Road construction (1/09)

Construction or improvements of existing roads shall be done in such a way as to minimize the environmental and visual impacts. Merchantable trees shall be cut and utilized unless otherwise directed. Non-merchantable trees shall be severed and laid flat on the ground. Slash shall be scattered, and not left in windrows and kept a minimum of 10 feet back from the road edge. Stumps shall be set upright, not left on edge, and be moved at least 10 feet away from the road edge. Disturbed soil shall be feathered into the woods and not left in berms or windrows.

Narrow access into some Payment Units will require widening and blading on lengths of state forest roads. Additional access timber must be piled separately for scaling by the Sale Administrator. The improved roads and constructed roads must not be unreasonably widened beyond 15 feet.

#### 4.1.7 - Road closure (10/11)

All new roads built into the sale must be blocked to vehicle traffic upon completion of the sale. Overgrown roads that are reopened shall be considered new roads. In general, this will require constructing a four (4') foot high berm of stumps and logs covered with earth. These roads must be rendered impassable to cars and trucks. Contact the Sale Administrator for specific details of design and placement.

### 4.2 - Maintenance

#### 4.2.5 - Two wheel drive condition (2/04)

All existing trail roads on and adjacent to the sale area must be passable by two-wheel drive traffic for the duration of the sale.

## 5 - Operations

### 5.1 - Notification

#### 5.1.1 - Pre-sale conference (10/16)

A pre-sale conference between the Purchaser and sale administrator is required prior to beginning any operations to determine landing and road locations. The Unit Manager or his/her representative must be contacted at least 5 days in advance to schedule the conference.

#### 5.1.4 - Post-sale conference (10/16)

A post-sale conference on site between the Purchaser and sale administrator is required 5 days prior to the completion of active logging operations to determine clean-up and repair of landings, road edges, and the fulfillment of other contract specifications.

### 5.2 - Conduct of Operations

#### 5.2.2 - Hazard Trees/Snags



#### 5.2.2.1 - Den trees (10/16)

Obvious hollow and/or den trees shall be protected and left standing unless they are a safety hazard.

### 5.2.3 - Operating Restrictions

#### 5.2.3.1 - Operating restrictions (9/11)

Within Payment Unit(s) 1-10, cutting, skidding, and hauling are limited to the period of August 16 to April 15. This restriction is to reduce the spread of oak wilt (all Payment Units) and to protect adjacent essential and occupied Kirtland's Warbler habitat (Payment Units 1-3 & 6).

#### 5.2.3.6 - Bark beetle restriction (12/08)

In the event drought creates a high risk of pine bark beetle infestation, pine is not to be cut during the period March 1 through July 1, unless all portions of trees greater than two inches in diameter are removed from the sale area, reduced to chips, or treated to the satisfaction of the Unit Manager or his/her representative, within fifteen days of being severed from the stump. Pine log decks, pulpwood piles and treetops that are piled for chipping in the fall or winter within a 1/4 mile of susceptible sites must be removed before March 15. Residual slash must not be placed in piles or rows and must be spread over the site for quick drying. The Department of Natural Resources will exercise this specification if the risk of damage warrants.

#### 5.2.3.11 - Coppice regeneration protection (4/10)

Timber harvesting in Payment Units 3-10 must be completed within 60 days of severing/cutting stem(s) to minimize damage to deciduous regeneration. Any post harvest operations, such as chipping, must be completed before sprouting of regeneration occurs. If it is anticipated that chipping will be delayed, then tops shall be carried to one central location or left unchipped. The Unit Manager or his/her representative may cease such operations if sprouting occurs before the operation is complete.

### 5.2.4 - Dead and Down Creation

#### 5.2.4.7 - Dead and down creation: hare, grouse, deer and other species (5/15)

To improve horizontal cover habitat for snowshoe hare, grouse, deer, and other species, the Purchaser is to push over all orange painted trees in Payment Units 6-8. These trees should be tipped over with the root ball still attached so the base of the tree is suspended off the ground. The crown of the fallen tree should be at or near ground level after it is pushed over. If it is impractical to push the trees over, they may be cut or partially cut and pushed over.

#### 5.2.31 - Landing locations (9/13)

Landing locations are shown on the Timber Sale Map. Landings must be confined to these designated sites unless otherwise authorized by the Unit Manager or his/her representative.

#### 5.2.32 - Decking/landing restoration (9/13)

All decking and landing areas must have the surface area restored to a condition equal to or better than before. This is to ensure the proper regeneration of the stand. Wood debris, chips and "cookies" from trimmings must be removed or scattered away from landing and loading areas and may not be windrowed on the edge.

#### 5.2.38 - No decking against live trees (2/04)

Cut products may not be decked against unmarked or designated leave trees.

#### 5.2.39 - ORV trail/route protection (4/18)

The Atlanta ORV and Motorcycle Trails are shown on the Timber Sale Map. Do not cut trees or damage posts with yellow, brown, or orange trail markers. All stumps within 5 feet of the trail must be cut flush with the ground. Maintain a 20-foot-wide slash, debris, and rut free zone daily using the trails or routes as the centerline. Do not run equipment down the ORV trail or route. Skidding across the trails or routes may only occur in locations approved by the Sale Administrator.

#### 5.2.41 - Snowmobile trail protection (9/11)

The LP9 snowmobile trail is shown on the Timber Sale Map. Do not cut or damage posts with orange trail markers or traffic control signs. If the trail is used, it must be maintained and restored to a condition equal to or better than before the sale. If the trail is used for hauling, it must be graded to the satisfaction of the Unit Manager or his/her representative prior to December 1. If the trail road is to be used for hauling during the snowmobile season, then a snow-covered base must be left on the trail. Maintain a 20-foot-wide slash, debris, and rut free zone daily using the snowmobile trail as the centerline. All stumps within 10 feet of the snowmobile trail must be cut at ground level.

## 5.4 - Soil Protection

### 5.4.1 - Rutting restriction, general (7/16)

Operations are to cease immediately if equipment and weather conditions result in rutting of roads and/or skid trails which is 12 inches or greater in depth and 50 feet in length. The Unit Manager or his/her representative may restrict hauling and/or skidding if ruts exceed the specified depth. With the Unit Manager or his/her representative's approval, the Purchaser may return to the area when the risk of rutting has decreased.

## 5.8 - Protection of Endangered Species

### 5.8.5 - Protection of raptor nests (3/13)

All trees with raptor nests will be protected if found during harvesting operations. Notification will be made to the Unit Manager or his/her representative who will notify the Wildlife Biologist so an on-site evaluation and recommendation can be made, if necessary.

## 6 - Safety and Fire Prevention

### 6.2 - Signing

#### 6.2.2 - Snowmobile trail posting (10/20)

The Purchaser is responsible for posting and maintaining caution signs on the LP9 Snowmobile Trail prior to beginning operations during the snowmobile season (approximately December 1 to March 31). The trail must be posted to warn of logging activity and truck traffic. Signs must be removed when harvest operations are suspended or completed.

#### 6.2.3 - Recreational trail posting (10/20)

The Purchaser is responsible for posting and maintaining caution signs on the Atlanta ATV, Motorcycle (Red Bridge to Atlanta MCCCT South) and LP9 Snowmobile trails prior to beginning operations. The trail must be posted at appropriate distances from the Sale Area to warn of logging activity and truck traffic at both ends of the trail. Signs must be removed when harvest operations are suspended or completed. The Purchaser will provide these signs.

**TIMBER SALE MAP**

54 - 002

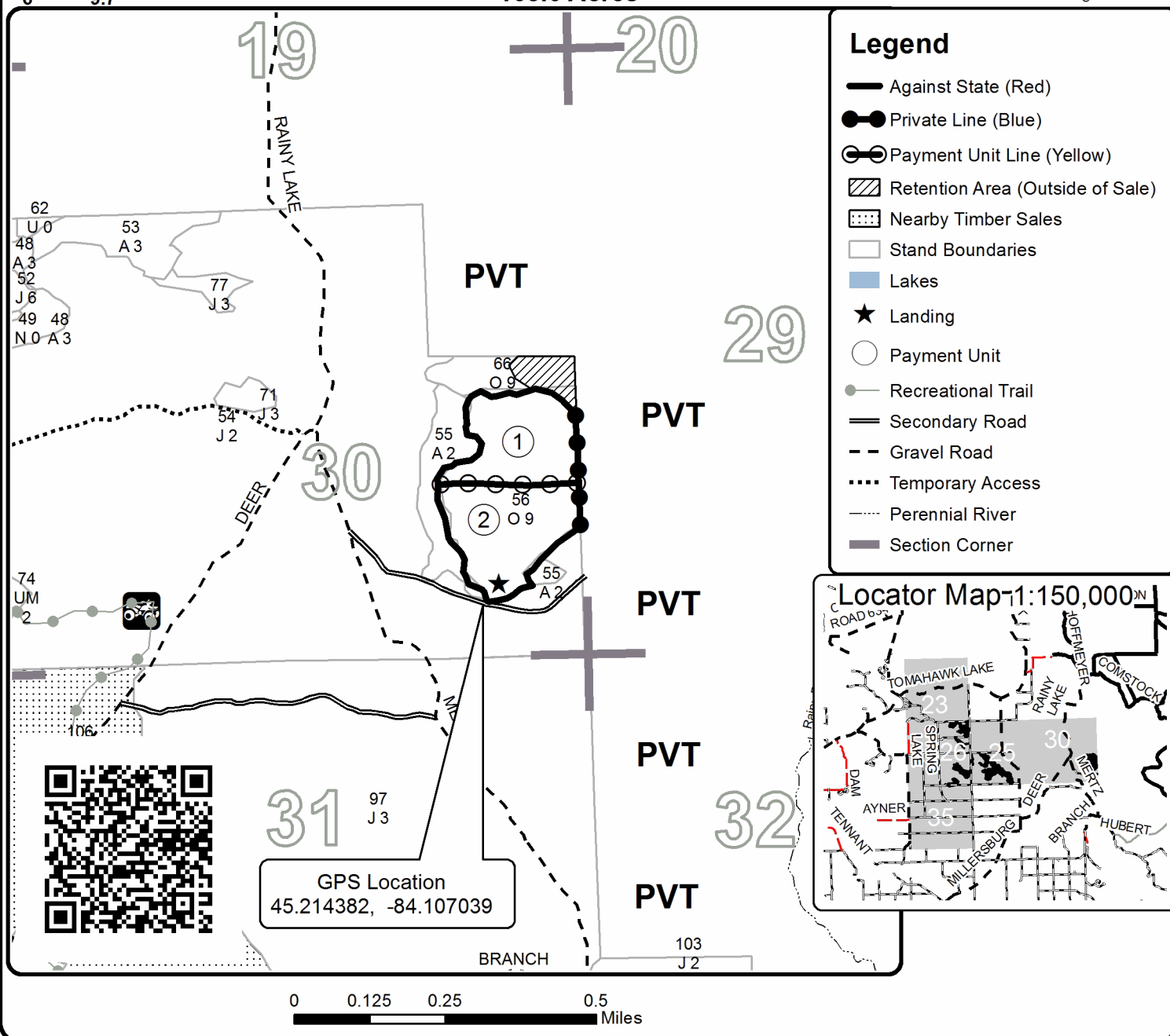
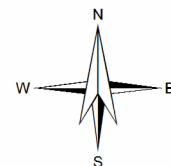
2023

*This information provided by authority of Part 525, 1994 PA 451, as amended.*Forest Management Unit  
Atlanta Management UnitCounty  
Presque IsleMapped By Coy  
Cruised By CoyDate  
04/07/2023Page  
1 of  
2Township  
33NRange  
02E & 03ESection(s) and Subdivision(s)  
23- SESE 25- SWNW,SW,SWSE 26- N1/2NE,SENE,SE 35- NWNE 30- E1/2SE

1:15,840

**Cover Type**A = Aspen  
B = Paper Birch  
C = Cedar  
D = Treed Bog  
E = Swamp Hardwoods  
F = Spruce/Fir  
G = Grass  
H = HemlockJ = Jack Pine  
K = Rock  
L = Lowland Brush  
LM = Lowland Mix Forest  
M = Maple, Beech, Birch  
MC = Mixed Conifer  
MD = Mixed Deciduous  
N = MarshO = Oak  
P = Lowland Poplar  
Q = Mixed Swamp Conifer  
R = Red Pine  
S = Black Spruce  
T = TamarackU = Upland Brush  
UM = Upland Mix Forest  
V = Bog or Marsh  
W = White Pine  
X = Non Stocked  
Y = Sand  
Z = Water**Density**0 = Non Stocked  
1 = Seedling Sapling Poor  
2 = Seedling Sapling Medium  
3 = Seedling Sapling Well  
4 = Pole Timber Poor5 = Pole Timber Medium  
6 = Pole Timber Well  
7 = Saw Timber Poor  
8 = Saw Timber Medium  
9 = Saw Timber Well

PU	Acres	PU	Acres
1	17.6	7	20.0
2	20.3	8	4.5
3	18.8	9	7.1
4	18.7	10	27.6
5	23.7		
6	9.7		

**Spring Lk and Elk Rd Aspen Oak**  
Compartment 124  
168.0 Acres

**TIMBER SALE MAP***This information provided by authority of Part 525, 1994 PA 451, as amended.*

54 - 002

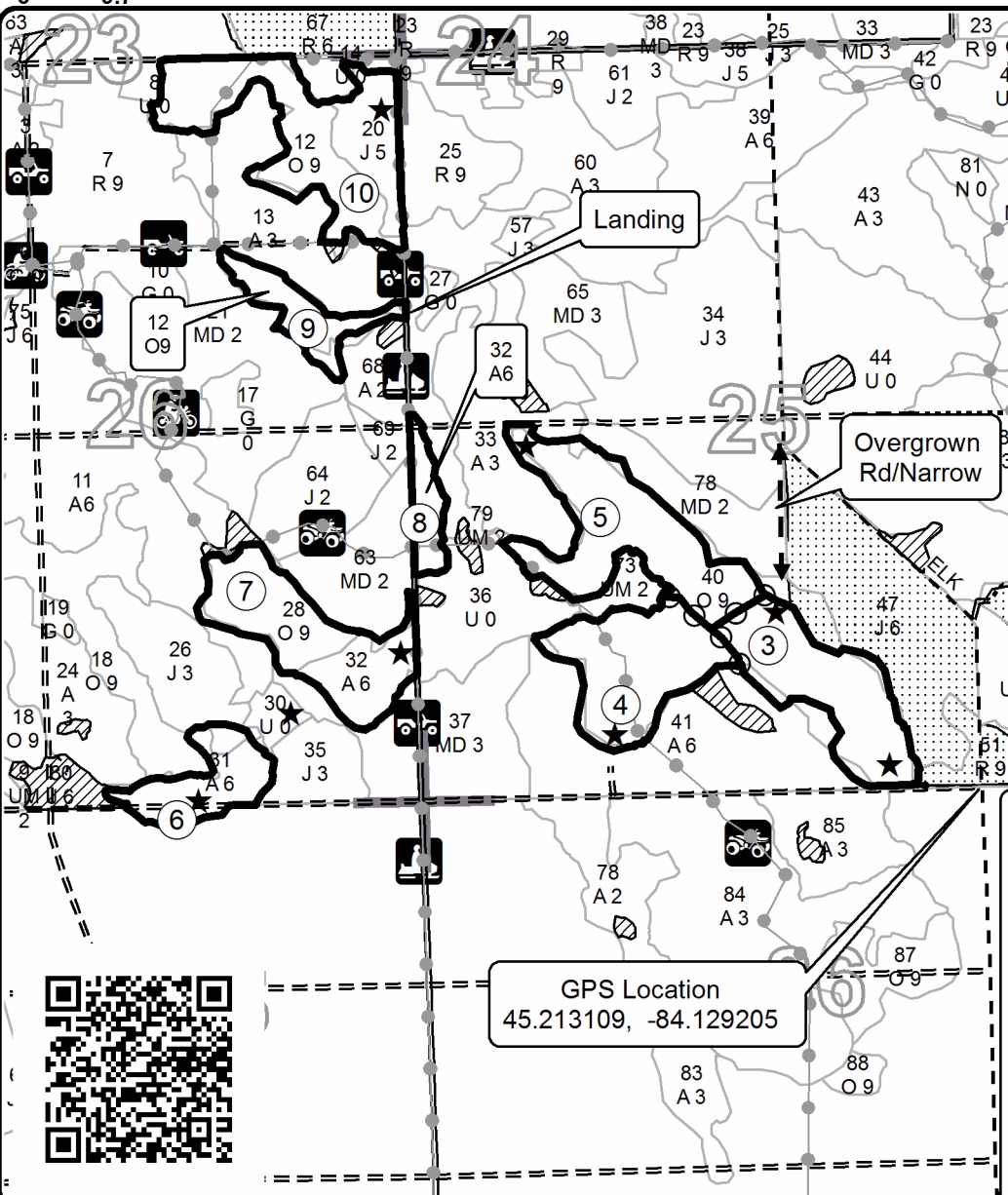
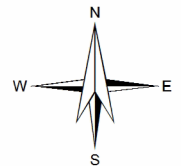
2023

Forest Management Unit  
Atlanta Management UnitCounty  
Presque IsleMapped By Coy  
Cruised By CoyDate  
04/07/2023Page  
2 of  
2Township  
33NRange  
02E & 03ESection(s) and Subdivision(s)  
23- SESE 25- SWNW,SW,SWSE 26- N1/2NE,SENE,SE 35- NWNE 30- E1/2SE

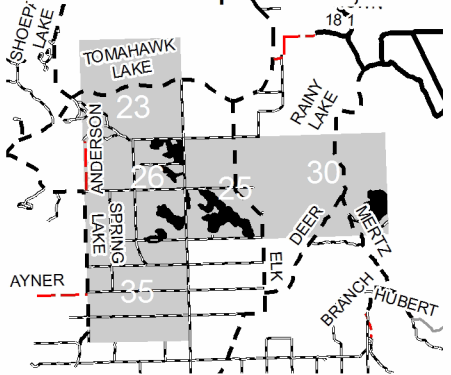
1:15,840

**Cover Type**A = Aspen  
B = Paper Birch  
C = Cedar  
D = Treed Bog  
E = Swamp Hardwoods  
F = Spruce/Fir  
G = Grass  
H = HemlockJ = Jack Pine  
K = Rock  
L = Lowland Brush  
LM = Lowland Mix Forest  
M = Maple, Beech, Birch  
MC = Mixed Conifer  
MD = Mixed Deciduous  
N = MarshO = Oak  
P = Lowland Poplar  
Q = Mixed Swamp Conifer  
R = Red Pine  
S = Black Spruce  
T = TamarackU = Upland Brush  
UM = Upland Mix Forest  
V = Bog or Marsh  
W = White Pine  
X = Non Stocked  
Y = Sand  
Z = Water**Density**0 = Non Stocked  
1 = Seedling Sapling Poor  
2 = Seedling Sapling Medium  
3 = Seedling Sapling Well  
4 = Pole Timber Poor5 = Pole Timber Medium  
6 = Pole Timber Well  
7 = Saw Timber Poor  
8 = Saw Timber Medium  
9 = Saw Timber Well

PU	Acres	PU	Acres
1	17.6	7	20.0
2	20.3	8	4.5
3	18.8	9	7.1
4	18.7	10	27.6
5	23.7		
6	9.7		

**Spring Lk and Elk Rd Aspen Oak**  
Compartment 124  
168.0 Acres**Legend**

- Against State (Red)
- Payment Unit Line (Yellow)
- ▨ Retention Area (Outside of Sale)
- ▤ Nearby Timber Sales
- Stand Boundaries
- Lakes
- ★ Landing
- Payment Unit
- Recreational Trail
- Secondary Road
- == Forest Access Route
- - Gravel Road
- .... Temporary Access
- Drain
- Section Corner

GPS Location  
45.213109, -84.129205**Locator Map 1:120,000**0 0.125 0.25 0.5  
Miles