



**DEPARTMENT OF NATURAL RESOURCES
STATE OF MICHIGAN
TIMBER SALE PROSPECTUS #7600**

SCHEDULED SALE DATE AND TIME: **9:00 a.m. (local time) on March 18, 2025.**

LOCATION: **GAYLORD MGMT UNIT, 1732 WEST M 32, GAYLORD, MI 49735.**

CONTACT NAME: Lucas Merrick

PHONE NUMBER: (989) 732-3541

PROSPECTUS NOTE: The bidder is advised to inspect the sale area and review the location, estimated volumes, operating costs and contract terms of proposed sales. Please be aware that some landowners may request 60 days or more notice for access across their land.

Notice is hereby given that bids will be received by the Unit Manager, GAYLORD MANAGEMENT UNIT, for certain timber on the following described lands:

Wooden Puzzle Pieces (52-012-23) / T33N, R04W, SEC. 20, E1/2NE.

T33N, R04W, SEC. 21, NE, E1/2SW, SE.

T33N, R04W, SEC. 27, W1/2NW.

T33N, R04W, SEC. 28, NW, NE, W1/2SW.

T33N, R04W, SEC. 29, E1/2NE, NESE.

Charlevoix County, Advertised Price \$127,323.85, 269.5 Acres, Aspen, Hardwood.

SALE NOTE: A wide variety of timber products and terrain (upland & lowland). Road building will be needed, and potentially crane mats in some PU's. Oak Wilt, and Bark Slip Specs will apply. There are also a variety of recreation trails in the area that must be protected during harvest.

A recreation site such as a trail, pathway, or campground is within the sale area or the vicinity. Certain restrictions/specifications may be applicable including time restrictions.

TIMBER SALE INFORMATION

Wooden Puzzle Pieces (52-012-23)

T33N, R04W, SEC. 20; T33N, R04W, SEC. 21; T33N, R04W, SEC. 27; T33N, R04W, SEC. 28; T33N, R04W, SEC. 29.
Charlevoix County (Advertised Price \$127,323.85)

SALE NOTE: A wide variety of timber products and terrain (upland & lowland). Road building will be needed, and potentially crane mats in some PU's. Oak Wilt, and Bark Slip Specs will apply. There are also a variety of recreation trails in the area that must be protected during harvest.

A recreation site such as a trail, pathway, or campground is within the sale area or the vicinity. Certain restrictions/specifications may be applicable including time restrictions.

A timber sale contract for this lump sum, sealed bid timber sale will be awarded to the responsible bidder offering the highest sealed bid price. All units of volume listed below were estimated using the Inventory Manager computer program and the new Michigan taper model. Bids must be at or above the following advertised price for each product and species:

<u>PRODUCTS & SPECIES</u>	<u>ESTIMATED UNITS*</u>	<u>ADVERTISED PRICE</u>
Sawtimber		
Balsam Fir	2.7 MBF	\$ 126.00 / MBF
Basswood	430.2 MBF	\$ 50.00 / MBF
Black Cherry	31.9 MBF	\$ 120.00 / MBF
Mixed Aspen	217.0 MBF	\$ 43.00 / MBF
Mixed Spruce	41.2 MBF	\$ 17.00 / MBF
N. White Cedar	56.7 MBF	\$ 16.00 / MBF
Red Maple	72.5 MBF	\$ 84.00 / MBF
Red Oak	152.5 MBF	\$ 117.00 / MBF
Sugar Maple	116.5 MBF	\$ 166.00 / MBF
White Pine	4.0 MBF	\$ 43.00 / MBF
Pulpwood		
Balsam Fir	204 Cords	\$ 8.25 / Cord
Basswood	408 Cords	\$ 8.20 / Cord
Mixed Aspen	1,544 Cords	\$ 11.90 / Cord
Mixed Hardwood	1,542 Cords	\$ 12.10 / Cord
Mixed Spruce	112 Cords	\$ 7.20 / Cord
N. White Cedar	174 Cords	\$ 7.15 / Cord
Red Oak	106 Cords	\$ 26.80 / Cord
White Pine	9 Cords	\$ 34.65 / Cord

* The total volume is statistically estimated within plus (+) or minus (-) 7.65 percent. There are an estimated 6,898 cords on this timber sale, plus or minus 528 cords at the 95% confidence level. The estimated units are final and not subject to adjustment. Prospective bidders are urged to examine this timber and to make their own estimates of quantity and quality.

BOND AND PAYMENT SCHEDULE:

1. A bond in the amount of \$6,366.19 to insure faithful performance of the conditions of the contract will be deposited by the successful bidder within 21 days of the sale award.
2. Cutting in any sale or unit without the required advance payment would be considered a trespass.
3. Total payment must be paid in advance or according to the following schedule :
 - (a) Ten percent (10%) of the sale value must be paid within 21 days of the sale award.
 - (b) The 10% down payment will be credited towards the first unit cut.
 - (c) Payment for each of the following units must be made before cutting begins in that unit:

PAYMENT UNIT NUMBER	PERCENT OF TOTAL SALE VALUE
01	4.7%
02	6.0%
03	9.2%
04	16.0%
05	35.2%
06	18.8%
07	10.1%
4. If no cutting takes place, the 10% down payment will not be refunded.
5. Operations on the contract issued will terminate on 06/30/2029.

SALE STATISTICS

Volumes were calculated in cubic feet using the Michigan taper model. Cubic foot volume includes all wood inside bark for the product indicated. For display purposes, cubic feet were converted to cords and MBF using a simple conversion factor, e.g. 79 cubic feet per cord and 185 cubic feet per MBF. The cubic foot volumes are precise; the cords and MBF volumes are not. Cubic foot volume cannot be directly converted to cords or boards with precision.

SALE VOLUMES

The total estimated sale volume may not equal the sum of the species/products due to the nature of statistical calculations associated with double sampling methodology.

VOLUME			STATISTICAL RANGE IN CORDS	
TOTAL CUBIC FEET	TOTAL CORDS	PERCENT ERROR	MINIMUM	MAXIMUM
544,928	6,898	7.65%	6,370	7,426

VDU VOLUMES

A VDU is a Volume Determination Unit. Volumes and their associated statistics are calculated at the VDU level and summarized to the sale level. There is often a one to one relationship between a VDU and a Payment Unit, but not always, depending on the cruise design. Refer to the VDU TO PAYMENT UNIT table.

VDU	VOLUME		PERCENT ERROR	RANGE IN CORDS	
	TOTAL CUBIC FEET	TOTAL CORDS		MINIMUM	MAXIMUM
39	24,229	307	40.22%	183	430
42	18,238	231	22.98%	178	284
53	46,385	587	21.49%	461	713
60	35,096	444	32.84%	298	590
66	42,789	542	28.52%	387	696
68	254,659	3,224	13.24%	2,797	3,650
71	101,840	1,289	10.37%	1,155	1,423
73	21,690	275	39.83%	165	384
TOTAL:	544,928	6,898		5,625	8,171

VDU TO PAYMENT UNIT

When a VDU is associated with more than one Payment Unit (PU), the VDU volumes are assigned to the PU based on acres of the VDU within the PU.

VDU	VDU ACRES	PU	PU ACRES
39	8.8	1	8.8
42	7.7	1	7.7
53	13.1	2	13.1
60	18.3	7	18.3
66	16.5	3	16.5
68	157.9	5	102.8
68	157.9	6	55.1
71	40.3	4	40.3
73	6.9	3	6.9
TOTAL:	427.4		269.5

DESCRIPTION OF TIMBER BY PU (PU)

PU	MARKET GROUP	PRODUCT	QUANTITY	UNIT	ACRES	ADVERTISE PRICE	
1	Black Cherry	Sawtimber	4.9	MBF	16.5	\$6,020.00	
	Mixed Aspen		16.3	MBF			
	<i>Quaking Aspen</i>		16.3	<i>MBF</i>			
	Mixed Spruce		12.5	MBF			
	<i>Black Spruce</i>		11.8	<i>MBF</i>			
	<i>White Spruce</i>		0.7	<i>MBF</i>			
	N. White Cedar		49.9	MBF			
	Red Maple		4.4	MBF			
	Sugar Maple		2.0	MBF			
	Balsam Fir		Pulpwood	61			Cords
	Mixed Aspen			48			Cords
	<i>Quaking Aspen</i>			48			<i>Cords</i>
	Mixed Hardwood			92			Cords
	<i>Paper Birch</i>			1.3			<i>MBF</i>
	<i>Black Cherry</i>			34			<i>Cords</i>
	<i>Paper Birch</i>			10			<i>Cords</i>
	<i>Red Maple</i>			40			<i>Cords</i>
	<i>Junberry (Juneberry)</i>	3		<i>Cords</i>			
	<i>Sugar Maple</i>	2		<i>Cords</i>			
	Mixed Spruce	31		Cords			
	<i>Black Spruce</i>	23		<i>Cords</i>			
	<i>White Spruce</i>	8		<i>Cords</i>			
	N. White Cedar	85		Cords			
2	Mixed Aspen	Sawtimber		59.3	MBF	13.1	\$7,681.25
	<i>Balsam Poplar</i>			7.7	<i>MBF</i>		
	<i>Quaking Aspen</i>		51.6	<i>MBF</i>			
	Mixed Spruce		15.7	MBF			
	<i>Black Spruce</i>		7.1	<i>MBF</i>			
	<i>White Spruce</i>		8.6	<i>MBF</i>			
	N. White Cedar		4.6	MBF			
	Red Maple		8.6	MBF			
	Balsam Fir		Pulpwood	13	Cords		
	Mixed Aspen			200	Cords		
	<i>Balsam Poplar</i>			3	<i>Cords</i>		
	<i>Quaking Aspen</i>			197	<i>Cords</i>		
	Mixed Hardwood			56	Cords		
	<i>Paper Birch</i>			7	<i>Cords</i>		
	<i>Red Maple</i>			49	<i>Cords</i>		
	Mixed Spruce			54	Cords		
	<i>Black Spruce</i>			48	<i>Cords</i>		
	<i>White Spruce</i>			6	<i>Cords</i>		
	N. White Cedar			72	Cords		
3	Balsam Fir	Sawtimber		1.6	MBF	23.4	\$11,728.65
	Basswood		7.1	MBF			
	Black Cherry		3.2	MBF			
	Mixed Aspen		39.0	MBF			
	<i>B. T. Aspen</i>		24.0	<i>MBF</i>			
	<i>Balsam Poplar</i>		9.4	<i>MBF</i>			
	<i>Quaking Aspen</i>		5.6	<i>MBF</i>			
	Mixed Spruce		13.0	MBF			
	<i>White Spruce</i>		13.0	<i>MBF</i>			
	N. White Cedar		2.2	MBF			
	Red Maple		11.2	MBF			
	Sugar Maple		4.2	MBF			
	White Pine		4.0	MBF			

DESCRIPTION OF TIMBER BY PU (PU), CON'T

PU	MARKET GROUP	PRODUCT	QUANTITY	UNIT	ACRES	ADVERTISE PRICE	
3 con't	Balsam Fir	Pulpwood	81	Cords			
	Basswood		2	Cords			
	Mixed Aspen		355	Cords			
	<i>B. T. Aspen</i>		48	Cords			
	<i>Balsam Poplar</i>		178	Cords			
	<i>Quaking Aspen</i>		129	Cords			
	Mixed Hardwood		127	Cords			
	<i>Paper Birch</i>		4.2	MBF			
	<i>Black Ash</i>		2	Cords			
	<i>Black Cherry</i>		5	Cords			
	<i>Paper Birch</i>		31	Cords			
	<i>Red Maple</i>		64	Cords			
	<i>Sugar Maple</i>		17	Cords			
	Mixed Spruce		23	Cords			
	<i>White Spruce</i>		23	Cords			
	N. White Cedar		17	Cords			
	White Pine		9	Cords			
4	Basswood	Sawtimber	0.7	MBF	40.3	\$20,429.90	
	Black Cherry		18.9	MBF			
	Mixed Aspen		100.8	MBF			
	<i>B. T. Aspen</i>		13.1	MBF			
	<i>Quaking Aspen</i>		87.7	MBF			
	Red Maple		3.8	MBF			
	Red Oak		1.5	MBF			
	Sugar Maple		12.7	MBF			
	Balsam Fir		Pulpwood	46			Cords
	Basswood			18			Cords
	Mixed Aspen			559			Cords
	<i>B. T. Aspen</i>			19			Cords
	<i>Balsam Poplar</i>			33			Cords
	<i>Quaking Aspen</i>			507			Cords
	Mixed Hardwood			296			Cords
	<i>Black Cherry</i>			143			Cords
	<i>Ironwood</i>			34			Cords
	<i>Red Maple</i>			48			Cords
	<i>Sugar Maple</i>			71			Cords
	Red Oak			16			Cords
5	Basswood	Sawtimber		259.8	MBF	102.8	\$44,625.00
	Red Maple		29.0	MBF			
	Red Oak		94.5	MBF			
	Sugar Maple		35.2	MBF			
	Basswood		Pulpwood	247	Cords		
	Mixed Aspen			239	Cords		
	<i>Quaking Aspen</i>			239	Cords		
	Mixed Hardwood			490	Cords		
	<i>Beech</i>			2.0	MBF		
	<i>Beech</i>			59	Cords		
	<i>Ironwood</i>			25	Cords		
	<i>Red Maple</i>			75	Cords		
	<i>Sugar Maple</i>			326	Cords		
	<i>Yellow Birch</i>			1	Cords		
	Red Oak			56	Cords		
	6			Basswood	Sawtimber		
Red Maple		15.5		MBF			
Red Oak		50.7	MBF				

DESCRIPTION OF TIMBER BY PU (PU), CON'T

PU	MARKET GROUP	PRODUCT	QUANTITY	UNIT	ACRES	ADVERTISE PRICE			
6 con't	Sugar Maple	Sawtimber	18.8	MBF					
	Basswood	Pulpwood	133	Cords					
	Mixed Aspen		128	Cords					
	<i>Quaking Aspen</i>		128	<i>Cords</i>					
	Mixed Hardwood		263	Cords					
	<i>Beech</i>	<i>Sawtimber</i>	1.0	<i>MBF</i>					
	<i>Beech</i>	<i>Pulpwood</i>	32	<i>Cords</i>					
	<i>Ironwood</i>		13	<i>Cords</i>					
	<i>Red Maple</i>		40	<i>Cords</i>					
	<i>Sugar Maple</i>		175	<i>Cords</i>					
	<i>Yellow Birch</i>		1	<i>Cords</i>					
	Red Oak		30	Cords					
	7	Balsam Fir	Sawtimber	1.1			MBF	18.3	\$12,919.25
Basswood			23.3	MBF					
Black Cherry			4.9	MBF					
Mixed Aspen			1.6	MBF					
<i>Quaking Aspen</i>			1.6	<i>MBF</i>					
Red Oak			5.8	MBF					
Sugar Maple			43.6	MBF					
Balsam Fir		Pulpwood	3	Cords					
Basswood			8	Cords					
Mixed Aspen			15	Cords					
<i>Quaking Aspen</i>			15	<i>Cords</i>					
Mixed Hardwood			218	Cords					
<i>American Elm</i>			84	<i>Cords</i>					
<i>Black Cherry</i>			13	<i>Cords</i>					
<i>Ironwood</i>			9	<i>Cords</i>					
<i>Sugar Maple</i>			112	<i>Cords</i>					
Mixed Spruce			4	Cords					
<i>White Spruce</i>			4	<i>Cords</i>					
Red Oak			4	Cords					
TOTAL:			1,125.2	MBF					
TOTAL:			4,099	Cords					

Sale Specific Conditions & Requirements

Sale Name: Wooden Puzzle Pieces

Sale Number: 52-012-23 Seq#: 2

1 - Sale Area

1.2 - Boundaries

1.2.1 - Painted Boundaries (9/19)

The sale boundary and Payment Unit boundaries are marked and identified by red and yellow paint. Exterior sale boundary lines against state are marked with red paint. Interior Payment Unit boundaries are marked with yellow paint. The painted boundary line trees are not Included Timber and are to be protected unless marked with orange paint. Yellow painted trees designating an interior Payment Unit boundary are only to be cut when all surrounding Payment Units have been paid.

2 - Timber Specifications

2.1 - Included Timber

2.1.1 - Clearcut Unit(s) with Unmerchantable Trees (6/14)

Within Payment Unit(s) 1-4 and 7, cut all trees that are two (2) inches or more at DBH with the following exceptions:

-Within Payment Unit(s) 1: Do not cut orange painted trees, See Specification 5.2.4.7 for more information.

-Within Payment Unit(s) 2 and 4: Do not cut hemlock.

-Within Payment Unit(s) 3: Do not cut white pine.

-Do not cut trees with green paint above and below the stump; they are not Included Timber and are to be protected.

Wildlife trees identified in accordance with condition 5.2.4.7, within clearcutting unit boundaries, are not Included Timber and are to be protected.

2.1.3 - Cut Tree Marked Unit(s) (12/08)

Within Payment Unit(s) 5 and 6, all trees are designated for cutting when marked with orange paint above and below stump height, regardless of merchantability. In addition, all trees that are 6 feet or more within the green painted regeneration gaps are designated for cutting.

3 - Payments

3.3 - Pre-measured Sales

3.3.4 - Dividing Payment Units (7/14)

Payment Unit(s) may be divided at the request of the Purchaser and upon approval of the Unit Manager. Dividing Payment Units is a contract modification which requires a Timber Sale Contract Amendment. There will be only one division per Payment Unit.

3.4 - Damaged Timber

3.4.1 - Damaged timber (7/16)

General Condition and Requirement 3.4 Damaged Timber, defines liquidated damages for undesigned live merchantable trees which are cut or injured. In addition, extreme care should be taken to avoid damage to tree seedlings and saplings.

Within the Sale Area, if more than 30% of the tree seedlings or saplings (1/4" to 4.5" DBH) within a specified portion of the Sale Area are damaged, liquidated damages will be assessed at \$ 200.00 per acre for all acreage within that specified portion of the Sale Area that was damaged.

No damage is acceptable to undesigned live merchantable trees. Within the Sale Area, if more than 5 % of trees (> 4.5" DBH) within a specified area of the sale are damaged, liquidated damages will be assessed for all trees damaged. Rates will be in accordance with General Condition and Requirement 3.4 Damaged Timber.

4 - Transportation

4.1 - Construction

4.1.4 - Timber Removed for Construction (3/23)

Trees cut or damaged in the process of pre-approved road, landing, or skid trail construction will be decked in an area separate from other Designated Timber and not removed until measured by the Sale Administrator. Payment will be made at contract prices or average prices, if not on the contract.

4.1.6 - Road construction (1/09)

Construction of new roads or improvements of existing roads shall be done in such a way as to minimize the environmental and visual impacts. Merchantable trees shall be cut and utilized unless otherwise directed. Non-merchantable trees shall be severed and laid flat on the ground. Slash shall be scattered, and not left in windrows and kept a minimum of 10 feet back from the road edge. Stumps shall be set upright, not left on edge, and be moved at least 10 feet away from the road edge. Disturbed soil shall be feathered into the woods and not left in berms or windrows.

4.1.7 - Road Closure (10/11)

All new roads built into the sale must be blocked to vehicle traffic upon completion of the sale. Overgrown roads that are reopened shall be considered new roads. Some existing roads may also need to be closed. In general, this will require constructing a four (4') foot high berm of stumps and logs covered with earth. These roads must be rendered impassable to cars and trucks. Contact the Sale Administrator for specific details of design and placement.

4.1.11 - Permits (2/12)

The Purchaser will secure any necessary permits that may be required.

4.2 - Maintenance

4.2.4 - Grading (10/16)

For completion of the sale, state forest roads must be graded. In general, this will require a road grader or bulldozer to shape up the roads after forest products have been hauled off site. This includes cleaning of drainage areas, grading, crowning and filling with gravel, if necessary. The grading equipment to be used must be approved by the Unit Manager or his/her representative.

4.2.5 - Two Wheel Drive Condition (2/04)

All existing trail roads on and adjacent to the Sale Area must be passable by two-wheel drive traffic for the duration of the sale.

5 - Operations

5.1 - Notification

5.1.1 - Pre-sale Conference (10/16)

A pre-sale conference on site between the Purchaser and Sale Administrator is required prior to beginning any operations. The Unit Manager or his/her representative must be contacted at least 5 days in advance to schedule the conference.

5.1.3 - Well Heads and Natural Gas Pipelines (11/15)

The Purchaser is responsible for contacting the gas or pipeline company and MISS DIG 30 days prior to operating equipment in the vicinity of well heads or natural gas pipelines.

5.1.4 - Post-Sale Conference (10/16)

A post-sale conference on site between the Purchaser and sale administrator is required 5 days prior to the completion of active logging operations to determine clean-up and repair of landings, road edges, and the fulfillment of other contract specifications.

5.2 - Conduct of Operations

5.2.1 - Slash

5.2.1.8 - Slash Height (12/08)

No slash or tree tops may exceed 36 inches in height.

5.2.2 - Hazard Trees/Snags

5.2.2.1 - Den Trees (10/16)

Obvious hollow and/or den trees shall be protected and left standing unless they are a safety hazard.

5.2.3 - Operating Restrictions

5.2.3.3 - Bark Slippage Restriction (3/09)

Within Payment Unit(s) 5 and 6, unless changed by written agreement, cutting and skidding are not permitted during the period of April 15 to July 15. This restriction is because of bark slippage.

5.2.3.4 - Oak Wilt Restriction, No Exceptions (1/18)

Within Payment Units 5 and 6, cutting, skidding, hauling within the sale and brushing of access roads to the sale are not permitted during the period of April 15 to July 15. No exceptions will be granted. This is necessary to reduce the spread of oak wilt.

5.2.3.11 - Coppice Regeneration Protection (4/10)

Timber harvesting in any Payment Unit must be completed before significant tree sprouting occurs in that Payment Unit so as to minimize damage to the new regeneration. The Unit Manager or his/her representative may cease such operations if sprouting occurs before the operation is complete.

5.2.4 - Dead and Down Creation

5.2.4.4 - Dead and Down Creation, Grouse (6/18)

To encourage grouse and other wildlife, in Payment Unit(s) 4, leave one, 12-inch diameter or larger log-length (8-foot minimum) piece on the ground for every 2 acres. These will be evenly scattered throughout the unit.

5.2.4.7 - Dead and Down Creation: Hare, Grouse, Deer and Other Species (5/15)

To improve horizontal cover habitat for snowshoe hare, grouse, deer, and other species, the Purchaser is to push over orange painted trees in Payment Unit 1. These trees should be tipped over with the root ball still attached so the base of the tree is suspended off the ground. The crown of the fallen tree should be at or near ground level after it is pushed over.

5.2.17 - Timber Mats and Interlocking Composite Mats (5/23)

Some roads or skid trails may require extra protection such as that afforded by timber mats, interlocking composite mats, or another approved system. If available, mats may be borrowed from the DNR. A Timber Sale Contract Amendment will be used to document the Purchaser's use of the DNR's mats. Contact the Sale Administrator regarding availability and pick-up. The Purchaser is responsible for picking up and hauling the mats to and from the site. A charge of \$700.00 per timber mat and \$2,000.00 per composite mat will be assessed for all damaged or non-returned mats. Damage for the crane/timber mats is defined as three or more broken cants. Damage for the composite mats is defined as cracked or broken mats.

5.2.22 - Operating Caution

5.2.22.1 - Operating Caution (6/11)

It is recommended, but not required, that within Payment Unit(s) 1-3, cutting, skidding, and hauling occur during dry summer or frozen winter conditions. The reason for the recommendation is because of potentially saturated and or sensitive soils.

5.2.32 - Decking/Landing Restoration (9/13)

All decking and landing areas must have the surface area restored to a condition equal to or better than before. This is to ensure the proper regeneration of the stand.

5.2.38 - No Decking Against Live Trees (2/04)

Cut products may not be decked against unmarked or designated leave trees.

5.2.39 - ORV Trail/Route Protection (4/18)

The ORV trail is shown on the Timber Sale Map and is located in Payment Unit 6. Do not cut trees or damage posts with yellow ORV markers. All stumps within 5 feet of the trail must be cut flush with the ground. Maintain a 20-foot-wide slash, debris, and rut free zone daily using the ORV trail or route as the centerline. Do not run equipment down the ORV trail or route. Skidding across the trail or route may only occur in locations approved by the Sale Administrator.

Upon request from the Purchaser, the Sale Administrator will flag the trail prior to the beginning of operations.

5.2.40 - Pathway Protection (10/10)

The Hiking Trail is shown on the Timber Sale Map and is located in Payment Units 4, 5 and 6. Do not cut trees or damage posts with blue pathway markers. Maintain a 20-foot-wide slash, debris, and rut free zone daily, using the pathway as the centerline. Do not run equipment down the pathway. Skidding across the trail may only occur in locations approved by the Sale Administrator.

Upon request from the Purchaser, the Sale Administrator will flag the trail prior to the beginning of operations.

5.2.41 - Snowmobile Trail Protection (9/11)

The snowmobile trail is shown on the Timber Sale Map and is located in Payment Units 6 and 7. Do not cut or damage posts with orange trail markers or traffic control signs. If the trail is used, it must be maintained and restored to a condition equal to or better than before the sale. The road maintenance/restoration must be done prior to December 1. If the trail is used for hauling, it must be graded to the satisfaction of the Unit Manager or his/her representative prior to December 1. If the trail road is to be used for hauling during the snowmobile season, then a snow-covered base must be left on the trail. The snowmobile trail may only be crossed at right angles. Maintain a 20-foot-wide slash, debris, and rut free zone daily using the snowmobile trail as the centerline. No decking of forest products will be permitted along the snowmobile trail. All stumps within 5 feet of the snowmobile trail must be cut at ground level.

5.2.43 - Opening Protection (2/21)

Openings directly off of Howard Road and the snowmobile trail near Payment Units 1-3 and 7 are not within the Sale Area and must be protected. These areas may be used as landings however the following rules apply:

- Do not cut cherry, apple, or basswood unless necessary for equipment operability.
- Trees that are cut will be decked in an area separate from other Designated Timber and not removed until measured by the Sale Administrator. Payment will be made at contract prices or average prices, if not on the contract.

Upon completion of the contract, these openings must be graded and found in the same or better condition prior to the sale.

5.4 - Soil Protection

5.4.1 - Rutting Restriction, General (7/16)

Operations are to cease immediately if equipment and weather conditions result in rutting of roads and/or skid trails which is 12 inches or greater in depth and 50 feet in length. The Unit Manager or his/her representative may restrict hauling and/or skidding if ruts exceed the specified depth. With the Unit Manager or his/her representative's approval, the Purchaser may return to the area when the risk of rutting has decreased.

5.4.4 - Slope Protection (9/19)

Skid trails and roads on slopes shall be water barred with slash and stumps as soon as use is complete to prevent erosion.

5.8 - Protection of Endangered Species

5.8.5 - Protection of Raptor Nests (3/13)

All trees with raptor nests will be protected if found during harvesting operations. Notification will be made to the Unit Manager or his/her representative who will notify the Wildlife Biologist so an onsite evaluation and recommendation can be made, if necessary.

6 - Safety and Fire Prevention

6.2 - Signing

6.2.1 - Road Posting (10/20)

The Purchaser is responsible for posting and maintaining caution signs on all state forest roads and/or county roads prior to beginning operations. The road must be posted at appropriate distances from the Sale Area to warn of logging activity and truck traffic. Signs must be removed when harvest operations are suspended or completed. The Purchaser will provide these signs.

6.2.2 - Snowmobile Trail Posting (10/20)

The Purchaser is responsible for posting and maintaining caution signs on the snowmobile trail prior to beginning operations during the snowmobile season (approximately December 1 to March 31). The trail must be posted at appropriate distances from the Sale Area to warn of logging activity and truck traffic. Signs must be removed when harvest operations are suspended or completed. The Purchaser will provide these signs.

6.2.3 - Recreational Trail Posting (10/20)

The Purchaser is responsible for posting and maintaining caution signs on the hiking pathway prior to beginning operations. The trail must be posted at appropriate distances from the Sale Area to warn of logging activity and truck traffic at both ends of the trail. Signs must be removed when harvest operations are suspended or completed. The Purchaser will provide these signs.



TIMBER SALE MAP

This information provided by authority of Part 525, 1994 PA 451, as amended.

Forest Management Unit Gaylord		County Charlevoix	Mapped By Doug Tyran	Date 08/30/2023	Page 2	of 2
Township 33N	Range 04W	Section(s) and Subdivision(s) 27: W1/2NW, 28: NW,NE,W1/2SW, 29: E1/2NE,NESE		Scale 1:15,840		

Cover Type				Density	
A = Aspen	H = Hemlock	N = Marsh	U = Upland Brush	0 = Non Stocked	5 = Pole Timber Medium
B = Paper Birch	J = Jack Pine	O = Oak	UM = Upland Mixed	1 = Seedling Sapling Poor	6 = Pole Timber Well
C = Cedar	L = Lowland Brush	P = Lowland Poplar	V = Bog or Marsh	2 = Seedling Sapling Medium	7 = Saw Timber Poor
D = Tread Bog	LM = Lowland Mixed	Q = Mixed Swamp Conifer	W = White Pine	3 = Seedling Sapling Well	8 = Saw Timber Medium
E = Swamp Hdwoods	M = Mpl, Bch, Brch	R = Red Pine	X = Non Stocked	4 = Pole Timber Poor	9 = Saw Timber Well
F = Spruce Fir	MC = Mixed Conifer	S = Black Spruce	Z = Water		
G = Grass	MD = Mixed Deciduous	T = Tamarack			

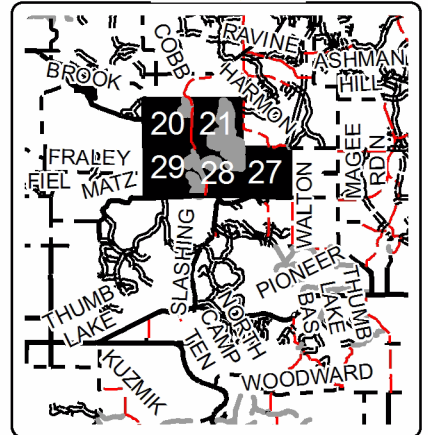
PU	Acres	PU	Acres
1	16.5	5	102.8
2	13.1	6	55.1
3	23.4	7	18.3
4	40.3		

Wooden Puzzle Pieces

Compartment 40
269.5 Acres

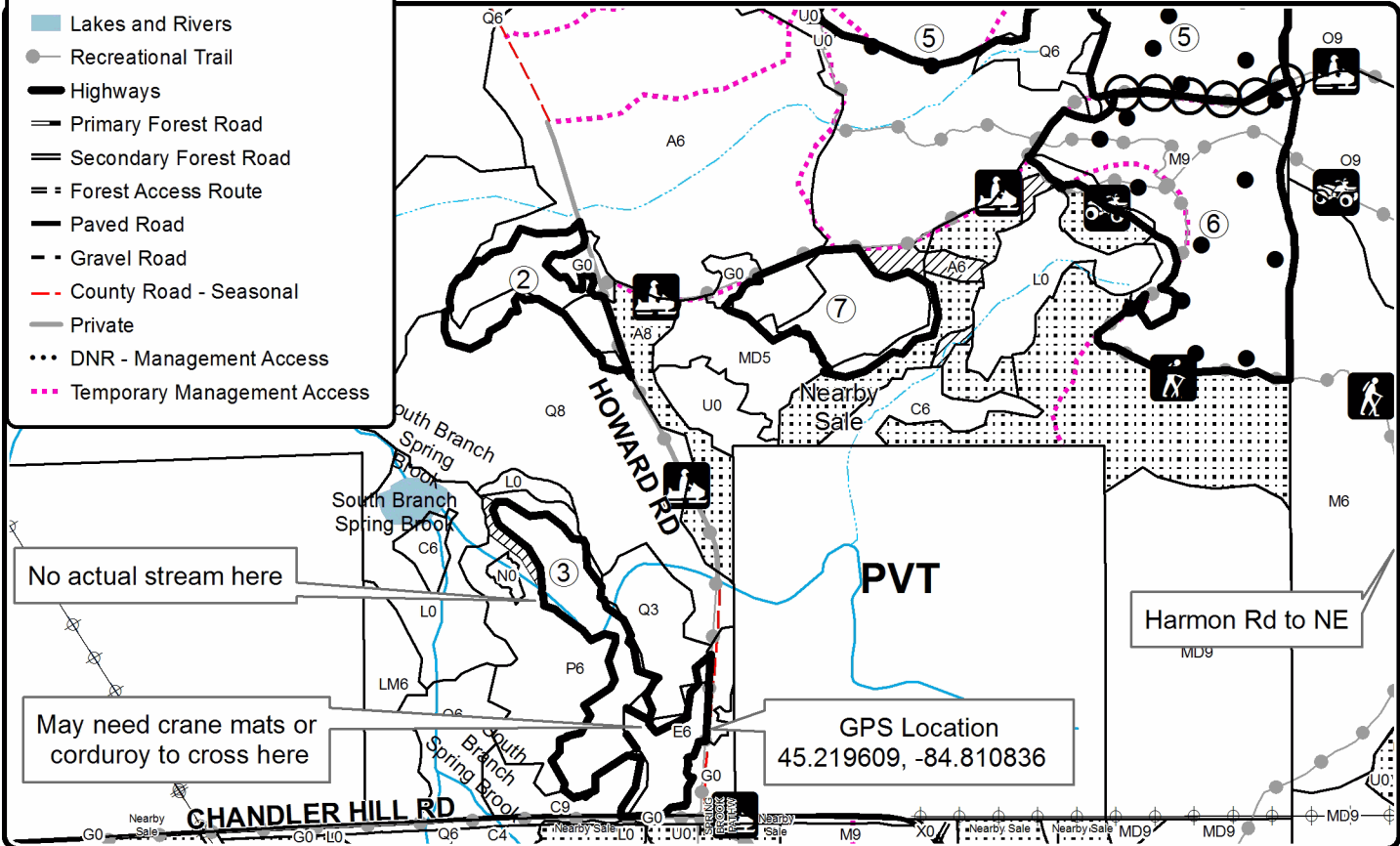
Locator Map

1:250,000



Legend

- Sale Boundary (Red)
- Payment Unit (Yellow)
- Regen Gaps (Green)
- Nearby Timber Sales
- Stand Boundaries
- Lakes and Rivers
- Recreational Trail
- Highways
- Primary Forest Road
- Secondary Forest Road
- Forest Access Route
- Paved Road
- Gravel Road
- County Road - Seasonal
- Private
- DNR - Management Access
- Temporary Management Access

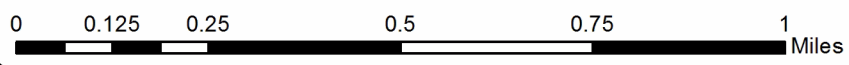


No actual stream here

May need crane mats or corduroy to cross here

GPS Location
45.219609, -84.810836

Harmon Rd to NE





TIMBER SALE MAP

This information provided by authority of Part 525, 1994 PA 451, as amended.

Forest Management Unit Gaylord		County Charlevoix	Mapped By Doug Tyran	Date 08/30/2023	Page 1	of 2
Township 33N	Range 04W	Section(s) and Subdivision(s) 20: E1/2NE, 21: NE, E1/2SW,SE		Scale 1:15,840		

Cover Type				Density	
A = Aspen	H = Hemlock	N = Marsh	U = Upland Brush	0 = Non Stocked	5 = Pole Timber Medium
B = Paper Birch	J = Jack Pine	O = Oak	UM = Upland Mixed	1 = Seedling Sapling Poor	6 = Pole Timber Well
C = Cedar	L = Lowland Brush	P = Lowland Poplar	V = Bog or Marsh	2 = Seedling Sapling Medium	7 = Saw Timber Poor
D = Treed Bog	LM = Lowland Mixed	Q = Mixed Swamp Conifer	W = White Pine	3 = Seedling Sapling Well	8 = Saw Timber Medium
E = Swamp Hdwoods	M = Mpl, Bch, Brch	R = Red Pine	X = Non Stocked	4 = Pole Timber Poor	9 = Saw Timber Well
F = Spruce Fir	MC = Mixed Conifer	S = Black Spruce	Z = Water		
G = Grass	MD = Mixed Deciduous	T = Tamarack			

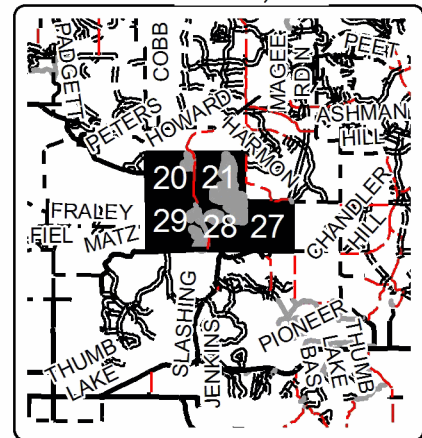
PU	Acres	PU	Acres
1	16.5	5	102.8
2	13.1	6	55.1
3	23.4	7	18.3
4	40.3		

Wooden Puzzle Pieces

Compartment 40
269.5 Acres

Locator Map

1:250,000



Legend

- Sale Boundary (Red)
- Payment Unit (Yellow)
- Regen Gaps (Green)
- Nearby Timber Sales
- Stand Boundaries
- Lakes and Rivers
- Recreational Trail
- Highways
- Primary Forest Road
- Secondary Forest Road
- Forest Access Route
- Paved Road
- Gravel Road
- County Road - Seasonal
- Private
- DNR - Management Access
- Temporary Management Access

