



**DEPARTMENT OF NATURAL RESOURCES  
STATE OF MICHIGAN  
TIMBER SALE PROSPECTUS #7550**

SCHEDULED SALE DATE AND TIME: **3:00 p.m. (local time) on January 7, 2025.**

LOCATION: **NAUBINWAY DNR FIELD OFFICE, PO BOX 287, W11569 US2, NAUBINWAY, MI 49762.**

CONTACT NAME: Josh Brinks

PHONE NUMBER: (906) 203-0210

PROSPECTUS NOTE: The bidder is advised to inspect the sale area and review the location, estimated volumes, operating costs and contract terms of proposed sales. Please be aware that some landowners may request 60 days or more notice for access across their land.

Notice is hereby given that bids will be received by the Unit Manager, SAULT STE MARIE MANAGEMENT UNIT, for certain timber on the following described lands:

Longtime HW (45-107-23) / T42N, R07W, SEC. 1 , SWNW,SW,NWSE.  
T42N, R07W, SEC. 2 , SESE.

Mackinac County, Advertised Price \$74,932.45, 84.3 Acres, Hardwood, Sugar Maple.

SALE NOTE: A recreation site such as a trail, pathway, or campground is within the sale area or the vicinity. Certain restrictions/specifications may be applicable including time restrictions.

# TIMBER SALE INFORMATION

Longtime HW (45-107-23)

T42N, R07W, SEC. 1; T42N, R07W, SEC. 2.

Mackinac County (Advertised Price \$74,932.45)

SALE NOTE: A recreation site such as a trail, pathway, or campground is within the sale area or the vicinity. Certain restrictions/specifications may be applicable including time restrictions.

A timber sale contract for this lump sum, sealed bid timber sale will be awarded to the responsible bidder offering the highest sealed bid price. All units of volume listed below were estimated using the Inventory Manager computer program and the new Michigan taper model. Bids must be at or above the following advertised price for each product and species:

<u>PRODUCTS &amp; SPECIES</u>	<u>ESTIMATED UNITS*</u>	<u>ADVERTISED PRICE</u>
Sawtimber		
Paper Birch	1.0 MBF	\$ 25.00 / MBF
Red Maple	63.0 MBF	\$ 92.00 / MBF
Sugar Maple	228.0 MBF	\$ 269.00 / MBF
Pulpwood		
Balsam Fir	4 Cords	\$ 8.40 / Cord
Mixed Hardwood	775 Cords	\$ 9.95 / Cord
White Spruce	4 Cords	\$ 8.65 / Cord

\* The total volume is statistically estimated within plus (+) or minus (-) 24.50 percent. There are an estimated 1,466 cords on this timber sale, plus or minus 359 cords at the 95% confidence level. The estimated units are final and not subject to adjustment. Prospective bidders are urged to examine this timber and to make their own estimates of quantity and quality.

### **BOND AND PAYMENT SCHEDULE:**

1. A bond in the amount of \$7,493.25 to insure faithful performance of the conditions of the contract will be deposited by the successful bidder within 21 days of the sale award.
2. Cutting in any sale or unit without the required advance payment would be considered a trespass.
3. Total payment must be paid in advance or according to the following schedule :
  - (a) Ten percent (10%) of the sale value must be paid within 21 days of the sale award.
  - (b) The 10% down payment will be credited towards the first unit cut.
  - (c) Payment for each of the following units must be made before cutting begins in that unit:
 

PAYMENT UNIT NUMBER	PERCENT OF TOTAL SALE VALUE
01	39.7%
02	51.0%
03	9.3%
4. If no cutting takes place, the 10% down payment will not be refunded.
5. Operations on the contract issued will terminate on 06/30/2029.

### **SALE STATISTICS**

Volumes were calculated in cubic feet using the Michigan taper model. Cubic foot volume includes all wood inside bark for the product indicated. For display purposes, cubic feet were converted to cords and MBF using a simple conversion factor, e.g. 79 cubic feet per cord and 185 cubic feet per MBF. The cubic foot volumes are precise; the cords and MBF volumes are not. Cubic foot volume cannot be directly converted to cords or boards with precision.

### **SALE VOLUMES**

The total estimated sale volume may not equal the sum of the species/products due to the nature of statistical calculations associated with double sampling methodology.

VOLUME		STATISTICAL RANGE IN CORDS		
TOTAL CUBIC FEET	TOTAL CORDS	PERCENT ERROR	MINIMUM	MAXIMUM
115,853	1,466	24.50%	1,107	1,826

## VDU VOLUMES

A VDU is a Volume Determination Unit. Volumes and their associated statistics are calculated at the VDU level and summarized to the sale level. There is often a one to one relationship between a VDU and a Payment Unit, but not always, depending on the cruise design. Refer to the VDU TO PAYMENT UNIT table.

VDU	VOLUME		PERCENT ERROR	RANGE IN CORDS	
	TOTAL CUBIC FEET	TOTAL CORDS		MINIMUM	MAXIMUM
16	98,234	1,243	16.21%	1,042	1,445
161	17,619	223	30.17%	156	290
<b>TOTAL:</b>	<b>115,853</b>	<b>1,466</b>		<b>1,198</b>	<b>1,735</b>

## VDU TO PAYMENT UNIT

When a VDU is associated with more than one Payment Unit (PU), the VDU volumes are assigned to the PU based on acres of the VDU within the PU.

VDU	VDU ACRES	PU	PU ACRES
16	72.7	1	31.8
		2	40.9
161	11.6	3	11.6
<b>TOTAL:</b>	<b>84.3</b>		<b>84.3</b>

## DESCRIPTION OF TIMBER BY PU (PU)

PU	MARKET GROUP	PRODUCT	QUANTITY	UNIT	ACRES	ADVERTISE PRICE
1	Red Maple	Sawtimber	15.4	MBF	31.8	\$29,736.80
	Sugar Maple		94.7	MBF		
	Mixed Hardwood	Pulpwood	286	Cords		
	<i>Beech</i>		3	<i>Cords</i>		
	<i>Red Maple</i>		79	<i>Cords</i>		
	<i>Sugar Maple</i>		204	<i>Cords</i>		
2	Red Maple	Sawtimber	19.8	MBF	40.9	\$38,228.90
	Sugar Maple		121.7	MBF		
	Balsam Fir	Pulpwood	1	Cords		
	Mixed Hardwood		368	Cords		
	<i>Beech</i>		4	<i>Cords</i>		
	<i>Red Maple</i>		102	<i>Cords</i>		
	<i>Sugar Maple</i>		262	<i>Cords</i>		
3	Paper Birch	Sawtimber	1.0	MBF	11.6	\$6,966.75
	Red Maple		27.8	MBF		
	Sugar Maple		11.6	MBF		
	Balsam Fir	Pulpwood	3	Cords		
	Mixed Hardwood		121	Cords		
	<i>Paper Birch</i>		1	<i>Cords</i>		
	<i>Red Maple</i>		88	<i>Cords</i>		
	<i>Sugar Maple</i>		32	<i>Cords</i>		
	White Spruce		4	Cords		
TOTAL:			292.0	MBF		
TOTAL:			783	Cords		

## Sale Specific Conditions & Requirements

Sale Name: Longtime HW

Sale Number: 45-107-23 Seq#: 2

### 1 - Sale Area

#### 1.2 - Boundaries

##### 1.2.1 - Painted boundaries (9/19)

The sale boundary and Payment Unit boundaries are marked and identified by blue, red and green paint. Exterior sale boundary lines against private property are marked with blue paint. Exterior sale boundary lines against state are marked with red paint. Interior Payment Unit boundaries are marked with green paint. The painted boundary line trees are not Included Timber and are to be protected unless marked with orange paint.

### 2 - Timber Specifications

#### 2.1 - Included Timber

##### 2.1.3 - Cut tree marked unit(s) (12/08)

Within Payment Unit(s) 1-3, all trees are designated for cutting when marked with orange paint above and below stump height, regardless of merchantability.

##### 2.1.4 - Designated timber unit(s) (6/17)

Within Payment Unit(s) 1-3, all aspen trees are designated for cutting which meet minimum piece specifications in 2.2 Utilization.

#### 2.2 - Utilization

##### 2.2.9 - No chipping permitted (12/08)

Within Payment Unit(s) 1-3, all wood must be removed by tree segment or roundwood. No chipping is permitted. Tops may not be chipped.

### 3 - Payments

#### 3.3 - Pre-measured Sales

##### 3.3.4 - Dividing payment units (7/14)

Payment Unit(s) 1 and 2 may be divided at the request of the Purchaser and upon approval of the Unit Manager. Dividing Payment Units is a contract modification which requires a Timber Sale Contract Amendment. There will be only one division per Payment Unit.

#### 3.6 - Payment Unit Cutting Schedule

##### 3.6.1 - Order of cutting (1/09)

Payment Unit 3 must be completed first. Upon completion of the Payment Unit, equipment will need to be decontaminated prior to leaving the Unit and moving to Payment Units 1 or 2, as described in Sale Spec 5.6.4.

### 4 - Transportation

#### 4.1 - Construction

##### 4.1.3 - Slash and earthen piles (8/04)

Piles or windrows of earth along roads and landings that have been widened or constructed shall be leveled. Slash from road maintenance or construction, including stumps, shall be dispersed throughout the sale.

##### 4.1.12 - No new roads (1/12)

No new roads will be permitted in any Payment Unit. All operations are limited to existing roads. Skid trails only will be allowed.

#### 4.2 - Maintenance

#### 4.2.1 - Hauling restriction (12/08)

Hauling and access to Payment Unit 3 is restricted to the road which runs south from the Payment Unit to Cut River Road. Hauling and access to Payment Unit 1 and 2 is restricted to Dump Road. The restriction is an attempt to keep operations out of areas heavily infested with invasive plants, as well as to reduce the potential of spreading those invasive plants.

#### 4.2.3 - Road maintenance (8/13)

The following road maintenance is required: Within 60 days of completion of hauling, or if no hauling occurs for 60 days, the road must be maintained and graded. This includes cleaning of drainage areas, grading, crowning, and filling with gravel, if necessary. Damages will be assessed if grading/repair does not occur.

#### 4.2.5 - Two wheel drive condition (2/04)

All existing trail roads on and adjacent to the sale area must be passable by two-wheel drive traffic for the duration of the sale.

### 5 - Operations

#### 5.1 - Notification

##### 5.1.6 - Utility R.O.W. (4/19)

It is the responsibility of the Purchaser to obtain permission from the utility company to utilize the pipeline R.O.W. for operations. Contact Enbridge.

#### 5.2 - Conduct of Operations

##### 5.2.2 - Hazard Trees/Snags

###### 5.2.2.1 - Den trees (10/16)

Obvious hollow and/or den trees shall be protected and left standing unless they are a safety hazard.

##### 5.2.3 - Operating Restrictions

###### 5.2.3.1 - Operating restrictions (9/11)

Within Payment Unit(s) 1-3, cutting, skidding, and hauling are limited to the period of completely snow-covered ground. There must be a minimum of six (6) inches of snow cover. This restriction is due to the presence of invasive garlic mustard on site.

##### 5.2.32 - Decking/landing restoration (9/13)

All decking and landing areas must have the surface area restored to a condition equal to or better than before. This is to ensure the proper regeneration of the stand. Wood debris, chips and "cookies" from trimmings must be removed or scattered away from landing and loading areas and may not be windrowed on the edge.

##### 5.2.38 - No decking against live trees (2/04)

Cut products may not be decked against unmarked or designated leave trees.

#### 5.6 - Debris and Waste Material

##### 5.6.4 - Equipment cleaning (2) (11/24)

For purposes of this provision, "Off-Road Equipment" includes all logging and construction machinery, except for log trucks, chip vans, service vehicles, water trucks, pickup trucks, cars, and similar vehicles. Off-Road Equipment shall be cleaned of plant material and dirt prior to being moved from Payment Unit 3 to Payment Units 1 and 2. This cleaning should occur in the south end of the Payment Unit before moving equipment out to Cut River Road. Upon completion of operation, all Off Road Equipment must be clean and free of plant material before leaving the Sale Area. It is highly recommended that equipment be cleaned often enough to prevent the buildup of snow and frozen soil in the wheels and undercarriage of equipment. Doing so will make the final decontamination much easier. Plant material includes leaves, stems, roots and seeds. Equipment shall be considered clean when a visual inspection does not disclose seeds, soil, vegetative matter, and other debris that could contain or hold seeds. This is to prevent the spread of invasive plant species.

#### 5.8 - Protection of Endangered Species

##### 5.8.5 - Protection of raptor nests (3/13)

All trees with raptor nests will be protected if found during harvesting operations. Notification will be made to the Unit

Manager or his/her representative who will notify the Wildlife Biologist so an on-site evaluation and recommendation can be made, if necessary.

## **6 - Safety and Fire Prevention**

### 6.2 - Signing

#### 6.2.1 - Road posting (10/20)

The Purchaser is responsible for posting and maintaining caution signs on roads used for skidding and hauling prior to beginning operations. The road must be posted at appropriate distances from the Sale Area to warn of logging activity and truck traffic. Signs must be removed when harvest operations are suspended or completed. The Purchaser will provide these signs.

#### 6.2.2 - Snowmobile trail posting (10/20)

The Purchaser is responsible for posting and maintaining caution signs on the snowmobile trail, if used for hauling, prior to beginning operations during the snowmobile season (approximately December 1 to March 31). The trail must be posted at both ends of trail segment will be used to warn of logging activity and truck traffic. Signs must be removed when harvest operations are suspended or completed. The Purchaser will provide these signs.



### TIMBER SALE MAP

This information provided by authority of Part 525, 1994 PA 451, as amended.

Sale Number  
**45-107-23**

Date  
**11/20/2023**

Forest Management Unit	County	Mapped By: C. Flatt
Sault Ste Marie Mgt Unit	Mackinac	Cruised By: Naubinway DNR Staff

Scale	Page	Of
1:15,840	1	1

Township	Range	Section(s) and Subdivision(s)
42N	07W	Sec. 1 SWNW,SW,NWSE; Sec. 2 SESE;

#### Cover Type

A = Aspen	J = Jack Pine	O = Oak	U = Upland Brush
B = Paper Birch	K = Rock	P = Lowland Poplar	UM = Upland Mix Forest
C = Cedar	L = Lowland Brush	Q = Mixed Swamp Conifer	V = Bog or Marsh
D = Treed Bog	LM = Lowland Mix Forest	R = Red Pine	W = White Pine
E = Swamp Hardwoods	M = Maple, Beech, Birch	S = Black Spruce	X = Non Stocked
F = Spruce/Fir	MC = Mixed Conifer	T = Tamarack	Y = Sand
G = Grass	MD = Mixed Deciduous	Z = Water	
H = Hemlock	N = Marsh		

#### Density

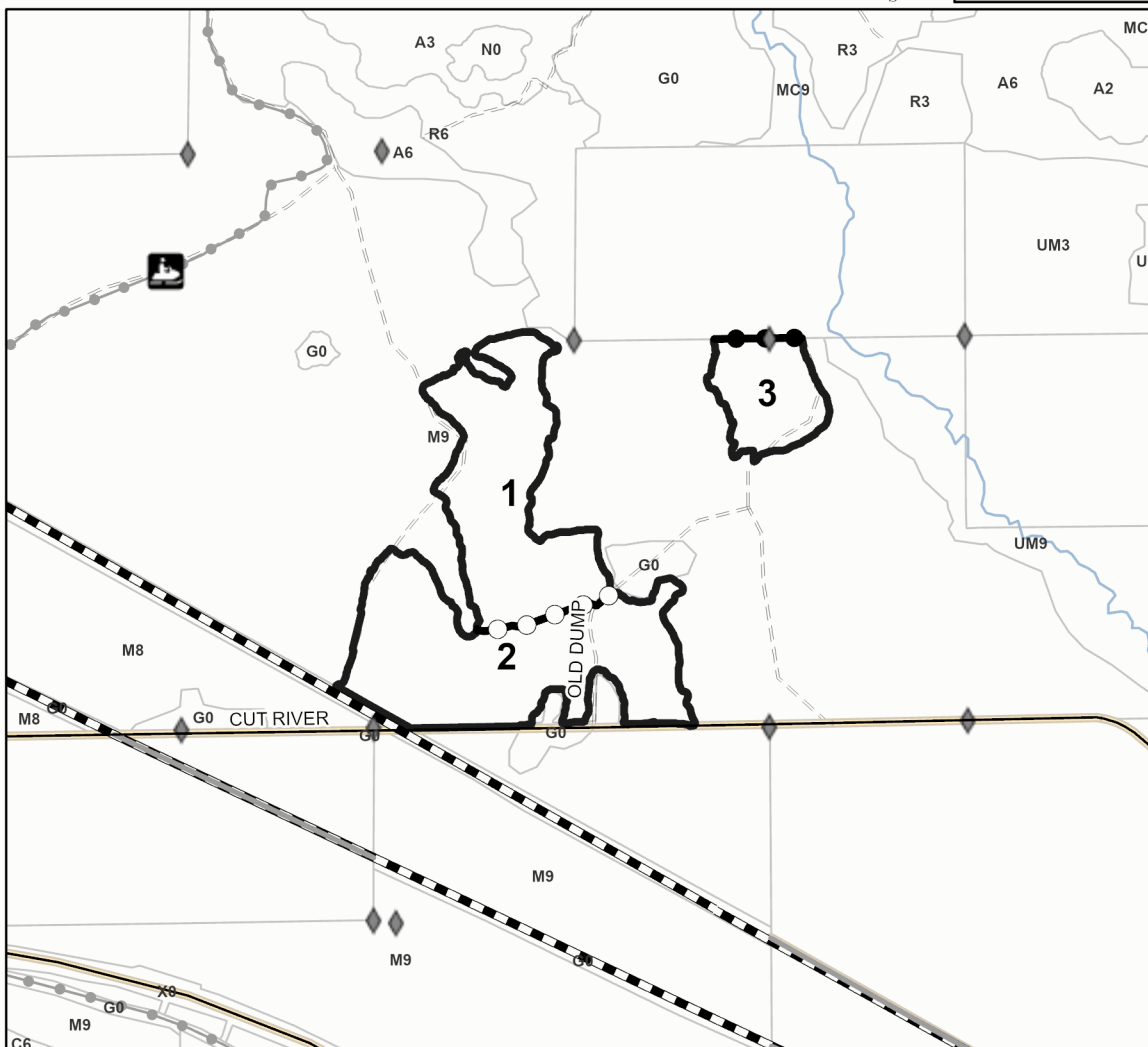
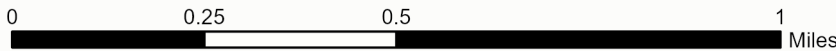
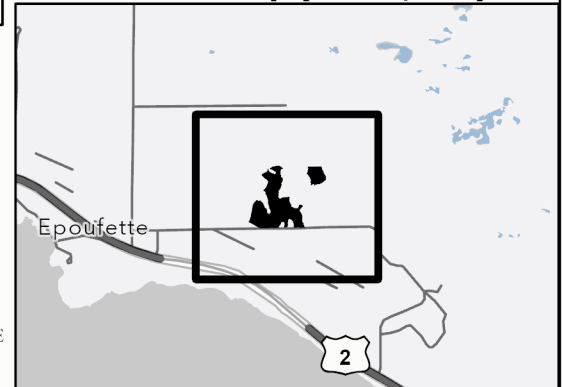
0 = Non Stocked	5 = Pole Timber Medium
1 = Seedling Sapling Poor	6 = Pole Timber Well
2 = Seedling Sapling Medium	7 = Saw Timber Poor
3 = Seedling Sapling Well	8 = Saw Timber Medium
4 = Pole Timber Poor	9 = Saw Timber Well

PU #	Acres
1	31.8
2	40.9
3	11.6

### Longtime HW

**84.3 Acres**

#### Locator Map (1:100,000)



#### Legend

- Against State (Red)
- Payment Unit (Green)
- Private Line (Blue)
- Stand
- Recreational Trail
- Secondary Forest Road
- Forest Access Route
- Non-DNR Road
- Pipeline
- Snowmobile
- Field Grade Corner

Use QR Code to open Map in App

