



**DEPARTMENT OF NATURAL RESOURCES
STATE OF MICHIGAN
TIMBER SALE PROSPECTUS #7499**

SCHEDULED SALE DATE AND TIME: 9:00 a.m. (local time) on November 21, 2024.

LOCATION: PIGEON RIVER COUNTRY MGMT UNIT, PO BOX 456, 9966 TWIN LAKES ROAD, VANDERBILT, MI

CONTACT NAME: Mark Monroe

PHONE NUMBER: (989) 983-4101

PROSPECTUS NOTE: The bidder is advised to inspect the sale area and review the location, estimated volumes, operating costs and contract terms of proposed sales. Please be aware that some landowners may request 60 days or more notice for access across their land.

Notice is hereby given that bids will be received by the Unit Manager, PIGEON RIVER COUNTRY MANAGEMENT UNIT, for certain timber on the following described lands:

Fisherman Aspen 2 (53-013-24) / T33N, R01W, SEC. 17, NENW,NWNE.

T33N, R01W, SEC. 19, W1/2NW.

T33N, R01W, SEC. 29, W1/2SW.

T33N, R01W, SEC. 30, SWNE,N1/2SE,SESE.

T33N, R01W, SEC. 31, NENE.

T33N, R01W, SEC. 8 , SESW,SWSE.

Cheboygan County, Advertised Price \$63,443.80, 82.3 Acres, Aspen, Hardwood.

SALE NOTE: A recreation site such as a trail, pathway, or campground is within the sale area or the vicinity. Certain restrictions/specifications may be applicable including time restrictions.

TIMBER SALE INFORMATION

Fisherman Aspen 2 (53-013-24)

T33N, R01W, SEC. 17; T33N, R01W, SEC. 19; T33N, R01W, SEC. 29; T33N, R01W, SEC. 30; T33N, R01W, SEC. 31; T33N, R01W, SEC. 8.

SALE NOTE: A recreation site such as a trail, pathway, or campground is within the sale area or the vicinity. Certain restrictions/specifications may be applicable including time restrictions.

A timber sale contract for this lump sum, sealed bid timber sale will be awarded to the responsible bidder offering the highest sealed bid price. All units of volume listed below were estimated using the Inventory Manager computer program and the new Michigan taper model. Bids must be at or above the following advertised price for each product and species:

<u>PRODUCTS & SPECIES</u>	<u>ESTIMATED UNITS*</u>	<u>ADVERTISED PRICE</u>
Sawtimber		
B. T. Aspen	123.0 MBF	\$ 38.00 / MBF
Basswood	19.6 MBF	\$ 55.00 / MBF
Red Maple	6.7 MBF	\$ 42.00 / MBF
Sugar Maple	11.4 MBF	\$ 179.00 / MBF
Pulpwood		
Balsam Fir	206 Cords	\$ 22.55 / Cord
Mixed Aspen	1,880 Cords	\$ 18.50 / Cord
Mixed Hardwood	598 Cords	\$ 12.45 / Cord
Red Pine	22 Cords	\$ 51.90 / Cord
White Pine	340 Cords	\$ 19.95 / Cord
White Spruce	34 Cords	\$ 16.90 / Cord

* The total volume is statistically estimated within plus (+) or minus (-) 16.41 percent. There are an estimated 3,454 cords on this timber sale, plus or minus 567 cords at the 95% confidence level. The estimated units are final and not subject to adjustment. Prospective bidders are urged to examine this timber and to make their own estimates of quantity and quality.

BOND AND PAYMENT SCHEDULE:

1. A bond in the amount of \$6,344.38 to insure faithful performance of the conditions of the contract will be deposited by the successful bidder within 21 days of the sale award.
2. Cutting in any sale or unit without the required advance payment would be considered a trespass.
3. Total payment must be paid in advance or according to the following schedule :
 - (a) Ten percent (10%) of the sale value must be paid within 21 days of the sale award.
 - (b) The 10% down payment will be credited towards the first unit cut.
 - (c) Payment for each of the following units must be made before cutting begins in that unit:

PAYMENT UNIT NUMBER	PERCENT OF TOTAL SALE VALUE
01	35.7%
02	27.4%
03	13.0%
04	4.5%
05	19.4%
4. If no cutting takes place, the 10% down payment will not be refunded.
5. Operations on the contract issued will terminate on 06/30/2027.

SALE STATISTICS

Volumes were calculated in cubic feet using the Michigan taper model. Cubic foot volume includes all wood inside bark for the product indicated. For display purposes, cubic feet were converted to cords and MBF using a simple conversion factor, e.g. 79 cubic feet per cord and 185 cubic feet per MBF. The cubic foot volumes are precise; the cords and MBF volumes are not. Cubic foot volume cannot be directly converted to cords or boards with precision.

SALE VOLUMES

The total estimated sale volume may not equal the sum of the species/products due to the nature of statistical calculations associated with double sampling methodology.

VOLUME		STATISTICAL RANGE IN CORDS		
TOTAL CUBIC FEET	TOTAL CORDS	PERCENT ERROR	MINIMUM	MAXIMUM
272,870	3,454	16.41%	2,887	4,021

VDU VOLUMES

A VDU is a Volume Determination Unit. Volumes and their associated statistics are calculated at the VDU level and summarized to the sale level. There is often a one to one relationship between a VDU and a Payment Unit, but not always, depending on the cruise design. Refer to the VDU TO PAYMENT UNIT table.

VDU	VOLUME		PERCENT ERROR	RANGE IN CORDS	
	TOTAL CUBIC FEET	TOTAL CORDS		MINIMUM	MAXIMUM
4	15,318	194	66.99%	64	324
33	32,868	416	34.43%	273	559
34	171,161	2,167	23.40%	1,660	2,674
74	53,523	678	28.14%	487	868
TOTAL:	272,870	3,454		2,483	4,425

VDU TO PAYMENT UNIT

When a VDU is associated with more than one Payment Unit (PU), the VDU volumes are assigned to the PU based on acres of the VDU within the PU.

VDU	VDU ACRES	PU	PU ACRES
4	5.5	4	5.5
33	9.8	3	9.8
34	51.7	1	29.3
		2	22.4
74	15.3	5	15.3
TOTAL:	82.3		82.3

DESCRIPTION OF TIMBER BY PU (PU)

PU	MARKET GROUP	PRODUCT	QUANTITY	UNIT	ACRES	ADVERTISE PRICE
1	B. T. Aspen	Sawtimber	54.1	MBF	29.3	\$22,696.55
	Basswood		11.1	MBF		
	Sugar Maple		4.6	MBF		
	Balsam Fir	Pulpwood	88	Cords		
	Mixed Aspen		784	Cords		
	<i>B. T. Aspen</i>		588	<i>Cords</i>		
	<i>Balsam Poplar</i>		6	<i>Cords</i>		
	<i>Quaking Aspen</i>		190	<i>Cords</i>		
	Mixed Hardwood		171	Cords		
	<i>Basswood</i>		56	<i>Cords</i>		
	<i>Beech</i>		3	<i>Cords</i>		
	<i>Black Cherry</i>		2	<i>Cords</i>		
	<i>Ironwood</i>		1	<i>Cords</i>		
	<i>Paper Birch</i>		32	<i>Cords</i>		
	<i>Red Maple</i>		8	<i>Cords</i>		
	<i>Sugar Maple</i>		69	<i>Cords</i>		
	Red Pine		5	Cords		
	<i>Red Pine</i>	Sawtimber	0.8	MBF		
	<i>Red Pine</i>	Pulpwood	3	Cords		
	White Pine		14	Cords		
	<i>White Pine</i>		14	<i>Cords</i>		
White Spruce		3	Cords			
2	B. T. Aspen	Sawtimber	41.3	MBF	22.4	\$17,365.45
	Basswood		8.5	MBF		
	Sugar Maple		3.6	MBF		
	Balsam Fir	Pulpwood	67	Cords		
	Mixed Aspen		599	Cords		
	<i>B. T. Aspen</i>		449	<i>Cords</i>		
	<i>Balsam Poplar</i>		5	<i>Cords</i>		
	<i>Quaking Aspen</i>		145	<i>Cords</i>		
	Mixed Hardwood		131	Cords		
	<i>Basswood</i>		42	<i>Cords</i>		
	<i>Beech</i>		3	<i>Cords</i>		
	<i>Black Cherry</i>		2	<i>Cords</i>		
	<i>Ironwood</i>		1	<i>Cords</i>		
	<i>Paper Birch</i>		25	<i>Cords</i>		
	<i>Red Maple</i>		6	<i>Cords</i>		
	<i>Sugar Maple</i>		52	<i>Cords</i>		
	Red Pine		4	Cords		
	<i>Red Pine</i>	Sawtimber	0.6	MBF		
	<i>Red Pine</i>	Pulpwood	3	Cords		
	White Pine		11	Cords		
	<i>White Pine</i>		11	<i>Cords</i>		
White Spruce		2	Cords			
3	B. T. Aspen	Sawtimber	26.2	MBF	9.8	\$8,229.60
	Red Maple		1.6	MBF		
	Sugar Maple		3.2	MBF		
	Balsam Fir	Pulpwood	12	Cords		
	Mixed Aspen		188	Cords		
	<i>B. T. Aspen</i>		149	<i>Cords</i>		
	<i>Quaking Aspen</i>		39	<i>Cords</i>		
	Mixed Hardwood		57	Cords		
	<i>Ironwood</i>		4	<i>Cords</i>		
	<i>Paper Birch</i>		6	<i>Cords</i>		
	<i>Red Maple</i>		31	<i>Cords</i>		

DESCRIPTION OF TIMBER BY PU (PU), CON'T

PU	MARKET GROUP	PRODUCT	QUANTITY	UNIT	ACRES	ADVERTISE PRICE
3 con't	<i>Sugar Maple</i>	<i>Pulpwood</i>	16	<i>Cords</i>		
	Red Pine		13	Cords		
	<i>Red Pine</i>	<i>Sawtimber</i>	2.5	<i>MBF</i>		
	<i>Red Pine</i>	<i>Pulpwood</i>	8	<i>Cords</i>		
	White Pine		69	Cords		
	<i>White Pine</i>		69	<i>Cords</i>		
	White Spruce		5	Cords		
4	Balsam Fir	Pulpwood	6	Cords	5.5	\$2,844.95
	Mixed Aspen		61	Cords		
	<i>Quaking Aspen</i>		61	<i>Cords</i>		
	Mixed Hardwood		127	Cords		
	<i>Black Cherry</i>		12	<i>Cords</i>		
	<i>Red Maple</i>		107	<i>Cords</i>		
	<i>Sugar Maple</i>		8	<i>Cords</i>		
5	B. T. Aspen	Sawtimber	1.4	MBF	15.3	\$12,307.25
	Red Maple		5.1	MBF		
	Balsam Fir	Pulpwood	33	Cords		
	Mixed Aspen		248	Cords		
	<i>B. T. Aspen</i>		95	<i>Cords</i>		
	<i>Quaking Aspen</i>		153	<i>Cords</i>		
	Mixed Hardwood		112	Cords		
	<i>Red Maple</i>		112	<i>Cords</i>		
	White Pine		246	Cords		
	<i>White Pine</i>	<i>Sawtimber</i>	2.8	<i>MBF</i>		
	<i>White Pine</i>	<i>Pulpwood</i>	240	<i>Cords</i>		
	White Spruce		24	Cords		
TOTAL:			160.7	MBF		
TOTAL:			3,080	Cords		

Sale Specific Conditions & Requirements

Sale Name: Fisherman Aspen 2

Sale Number: 53-013-24 Seq#: 1

1 - Sale Area

1.2 - Boundaries

1.2.1 - Painted boundaries (9/19)

The sale boundary is marked and identified by red and blue paint. The exterior sale boundary lines against private property is marked with blue paint. Exterior sale boundary lines against state are marked with red paint. The Interior Payment Unit boundary lines are not painted and can be designated by the access road that runs from the gate to the north end of the sale between Payment Units 1 and 2. The painted boundary line trees are not Included Timber and are to be protected.

2 - Timber Specifications

2.1 - Included Timber

2.1.1 - Clearcut unit(s) with unmerchantable trees (6/14)

Within Payment Unit(s) 1 - 5, cut all trees that are two (2) inches or more at DBH, except do not cut trees ringed in green paint. In addition, within Payment Unit 3, do not cut any sugar maple that are 14 inches or more at DBH.

Special protection trees identified in accordance with condition 3.4.2, within clearcutting unit boundaries, are not Included Timber and are to be protected.

3 - Payments

3.4 - Damaged Timber

3.4.2 - Special Protection Trees (4/14)

The Purchaser shall not cut live or dead special protection trees within cutting units or clearings. Special protection trees are marked with green paint. If the Purchaser's operations have cut or damaged special protection trees through carelessness, the Purchaser shall pay \$500 as fixed, agreed and liquidated damages for each special protection tree cut or damaged. Such payment does not constitute ownership of the undesignated timber.

4 - Transportation

4.1 - Construction

4.1.3 - Slash and earthen piles (8/04)

Piles or windrows of earth along roads and landings that have been widened or constructed shall be leveled. Slash from road maintenance or construction, including stumps, shall be dispersed throughout the sale.

4.1.7 - Road closure (10/11)

Overgrown or bermed access roads that are reopened must be blocked to vehicle traffic upon completion of the sale. In general, this will require constructing a four (4') foot high berm of stumps and logs covered with earth. Stumps and brush must be placed along the remainder of the trail. These roads must be rendered impassable to cars and trucks. Contact the Sale Administrator for specific details of design and placement.

4.1.12 - No new roads (1/12)

No new roads will be permitted. All operations are limited to existing roads. Skid trails only will be allowed.

4.2 - Maintenance

4.2.5 - Two wheel drive condition (2/04)

All existing trail roads on and adjacent to the sale area must be passable by two-wheel drive traffic for the duration of the sale.

4.4 - Access

4.4.3 - Access gate (12/08)

The access gate along Payment Unit 1 and 2 and the access gate west of Payment Unit 5 must be locked at the completion of each day.

5 - Operations

5.1 - Notification

5.1.1 - Pre-sale conference (10/16)

A pre-sale conference on site between the Purchaser and sale administrator is required prior to beginning any operations. The Unit Manager or his/her representative must be contacted at least 3 days in advance to schedule the conference.

5.1.4 - Post-sale conference (10/16)

A post-sale conference on site between the Purchaser and sale administrator is required 2 days prior to the completion of active logging operations to determine clean-up and repair of landings, road edges, and the fulfillment of other contract specifications.

5.2 - Conduct of Operations

5.2.1 - Slash

5.2.1.10 - No slash in openings (5/10)

No brush or logging debris is to be left in the maintained wildlife opening which is indicated by G0 on the Timber Sale Map. Any damage to the opening shall be repaired according to specifications of the Unit Manager or his/her representative.

5.2.3 - Operating Restrictions

5.2.3.11 - Coppice regeneration protection (4/10)

To promote aspen regeneration, harvesting is limited to December 1 through March 31. Timber harvesting in any Payment Unit must be completed before significant aspen sprouting occurs in that Payment Unit so as to minimize damage to the new regeneration. Any post harvest operations, such as chipping, must be completed before sprouting of regeneration occurs. If it is anticipated that chipping will be delayed, then tops shall be carried to one central location or left unchipped. The Unit Manager or his/her representative may cease such operations if sprouting occurs before the operation is complete.

5.2.4 - Dead and Down Creation

5.2.4.7 - Dead and down creation: hare, grouse, deer and other species (5/15)

To improve horizontal cover habitat for snowshoe hare, grouse, deer, and other species, the Purchaser is to push over trees ringed with pink paint. These trees should be tipped over with the root ball still attached so the base of the tree is suspended off the ground. The crown of the fallen tree should be at or near ground level after it is pushed over. If this is not feasible, the Producer has the option to sever the tree and set the bole on or near the stump.

5.2.32 - Decking/landing restoration (9/13)

All decking and landing areas must have the surface area restored to a condition equal to or better than before. This is to ensure the proper regeneration of the stand. Wood debris, chips and "cookies" from trimmings must be removed or scattered away from landing and loading areas and may not be windrowed on the edge.

5.2.38 - No decking against live trees (2/04)

Cut products may not be decked against unmarked or designated leave trees.

5.2.40 - Pathway protection (10/10)

The High Country Pathway is a hiking/ski trail that is also open to bicycles. The trail runs through Payment Unit 1 and is shown on the Timber Sale Map. Do not cut trees or damage posts with blue pathway markers. Crossing of the of the trail by equipment will be limited to one location, possibly two with permission from the Sale Administrator. The Trail shall be kept free of slash at all times.

5.4 - Soil Protection

5.4.1 - Rutting restriction, general (7/16)

Operations are to cease immediately if equipment and weather conditions result in rutting of roads and/or skid trails which is 12 inches or greater in depth and 25 feet in length. The Unit Manager or his/her representative may restrict hauling and/or skidding if ruts exceed the specified depth. With the Unit Manager or his/her representative's approval, the Purchaser may return to the area when the risk of rutting has decreased.

5.8 - Protection of Endangered Species

5.8.5 - Protection of raptor nests (3/13)

All trees with raptor nests will be protected if found during harvesting operations. Notification will be made to the Unit Manager or his/her representative who will notify the Wildlife Biologist so an on-site evaluation and recommendation can be made, if necessary.

6 - Safety and Fire Prevention

6.2 - Signing

6.2.1 - Road posting (10/20)

The Purchaser is responsible for posting and maintaining caution signs on Fisherman Road prior to beginning operations. The road must be posted at appropriate distances from the Sale Area to warn of logging activity and truck traffic. Signs must be removed when harvest operations are suspended or completed. The Purchaser will provide these signs.

6.2.3 - Recreational trail posting (10/20)

The Purchaser is responsible for posting and maintaining caution signs on the High Country Pathway prior to beginning operations. The trail must be posted at appropriate distances from the Sale Area to warn of logging activity and truck traffic at both ends of the trail. Signs must be removed when harvest operations are suspended or completed. The Purchaser will provide these signs.



TIMBER SALE MAP

This information provided by authority of Part 525, 1994 PA 451, as amended.

Sale Number
53-013-24

Date
09/21/2024

Forest Management Unit	County	Mapped By: Joy Mittig
Pigeon River Country Mgt Unit	Cheboygan	Cruised By: Joy Mittig

Scale	Page	Of
1:10,000	1	3

Township	Range	Section(s) and Subdivision(s)
33N	01W	NENE; Sec. 8 SESW,SWSE; Sec. 17 NENW,NWNE; Sec. 19 W1/2NW; Sec. 29 W1/2SW; Sec. 30 SWNE,N1/2SE,SESE; Sec. 31

Cover Type

A = Aspen	J = Jack Pine	O = Oak	U = Upland Brush
B = Paper Birch	K = Rock	P = Lowland Poplar	UM = Upland Mix Forest
C = Cedar	L = Lowland Brush	Q = Mixed Swamp Conifer	V = Bog or Marsh
D = Treed Bog	LM = Lowland Mix Forest	R = Red Pine	W = White Pine
E = Swamp Hardwoods	M = Maple, Beech, Birch	S = Black Spruce	X = Non Stocked
F = Spruce/Fir	MC = Mixed Conifer	T = Tamarack	Y = Sand
G = Grass	MD = Mixed Deciduous	Z = Water	
H = Hemlock	N = Marsh		

Density

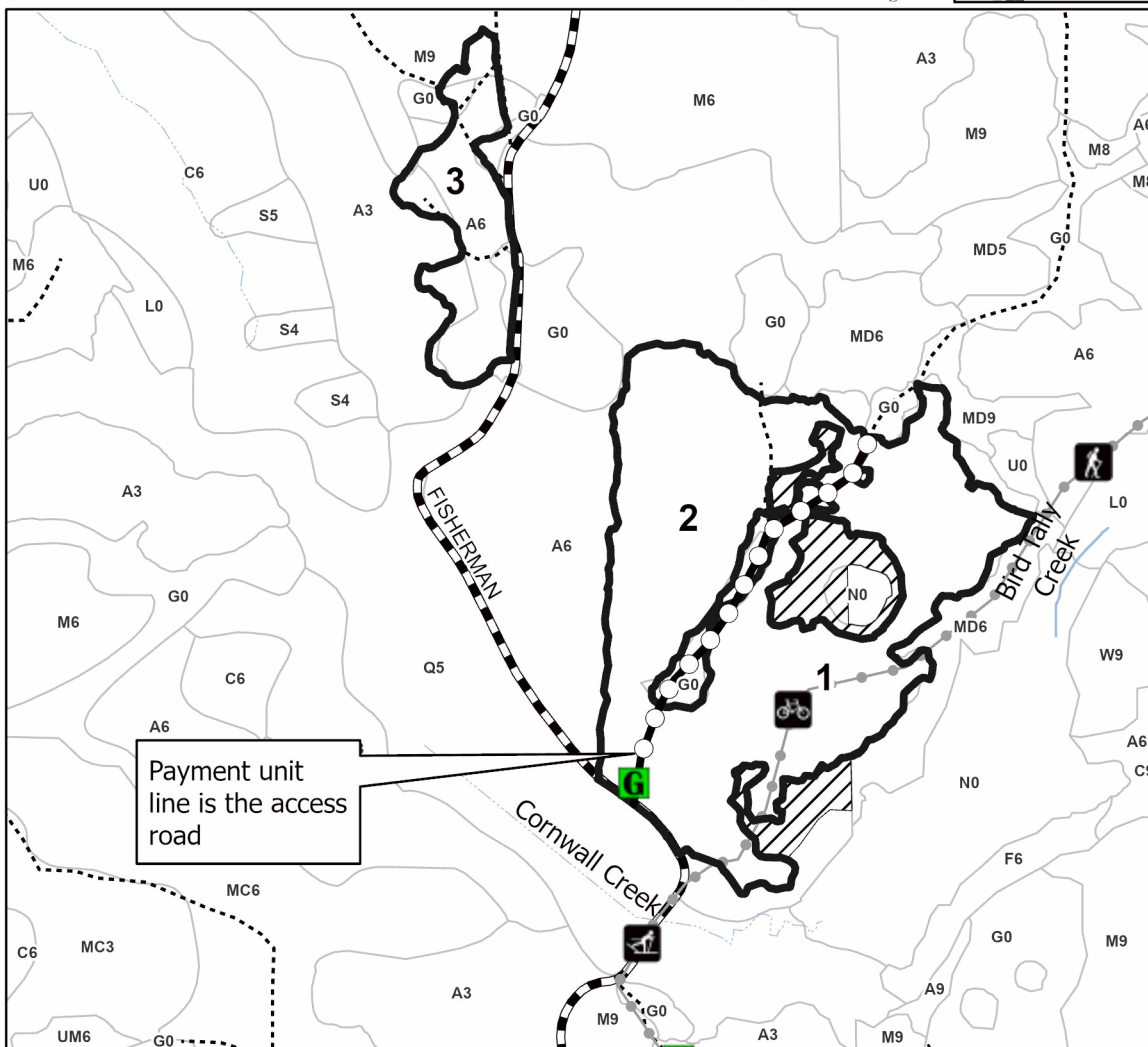
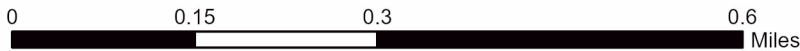
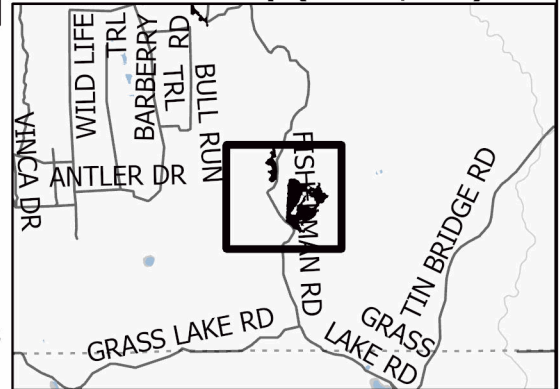
0 = Non Stocked	5 = Pole Timber Medium
1 = Seedling Sapling Poor	6 = Pole Timber Well
2 = Seedling Sapling Medium	7 = Saw Timber Poor
3 = Seedling Sapling Well	8 = Saw Timber Medium
4 = Pole Timber Poor	9 = Saw Timber Well

PU #	Acres
1	29.3
2	22.4
3	9.8
4	5.5
5	15.3

Fisherman Aspen 2

82.3 Acres

Locator Map (1:100,000)



Payment unit line is the access road

Legend

- Against State (Red)
- Payment Unit (Access Road)
- Retention Areas
- Stand
- Recreational Trail
- Intermittent Stream
- Perennial River
- Administrative Access Only
- Government Gravel/Dirt
- Gate

Use QR Code to open Map in App





TIMBER SALE MAP

This information provided by authority of Part 525, 1994 PA 451, as amended.

Sale Number	Date	
53-013-24	09/21/2024	
Scale	Page	Of
1:7,920	2	3

Forest Management Unit	County	Mapped By: Joy Mittig
Pigeon River Country Mgt Unit	Cheboygan	Cruised By: Joy Mittig

Township	Range	Section(s) and Subdivision(s)
33N	01W	NENE; Sec. 8 SESW,SWSE; Sec. 17 NENW,NWNE; Sec. 19 W1/2NW; Sec. 29 W1/2SW; Sec. 30 SWNE,N1/2SE,SESE; Sec. 31

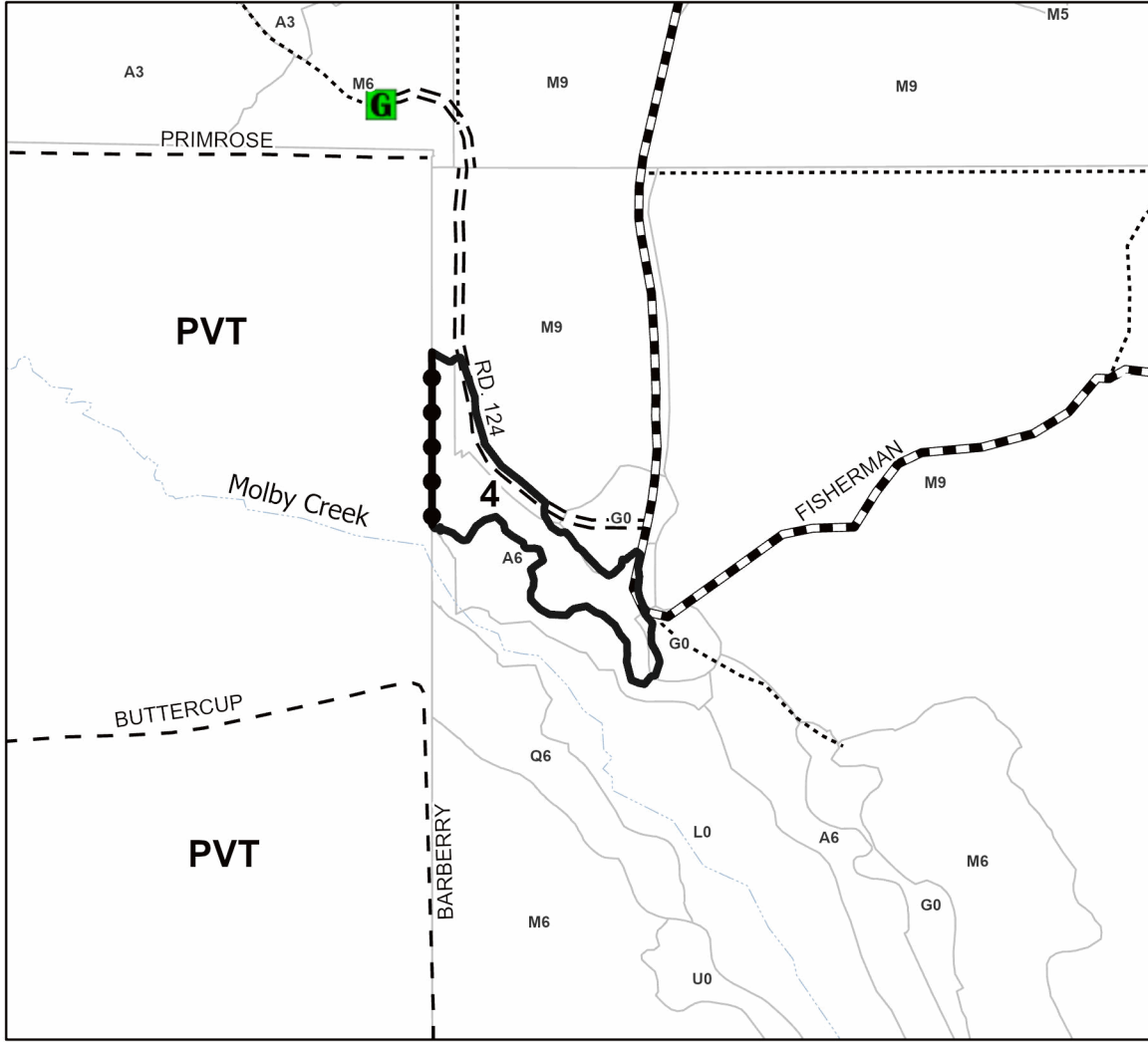
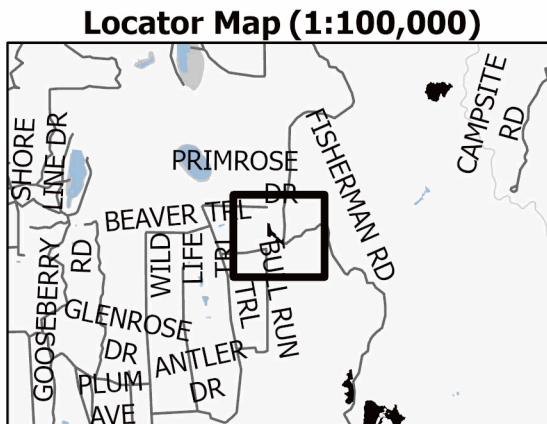
Cover Type			
A = Aspen	J = Jack Pine	O = Oak	U = Upland Brush
B = Paper Birch	K = Rock	P = Lowland Poplar	UM = Upland Mix Forest
C = Cedar	L = Lowland Brush	Q = Mixed Swamp Conifer	V = Bog or Marsh
D = Treed Bog	LM = Lowland Mix Forest	R = Red Pine	W = White Pine
E = Swamp Hardwoods	M = Maple, Beech, Birch	S = Black Spruce	X = Non Stocked
F = Spruce/Fir	MC = Mixed Conifer	T = Tamarack	Y = Sand
G = Grass	MD = Mixed Deciduous	Z = Water	
H = Hemlock	N = Marsh		

Density	
0 = Non Stocked	5 = Pole Timber Medium
1 = Seedling Sapling Poor	6 = Pole Timber Well
2 = Seedling Sapling Medium	7 = Saw Timber Poor
3 = Seedling Sapling Well	8 = Saw Timber Medium
4 = Pole Timber Poor	9 = Saw Timber Well

PU #	Acres
1	29.3
2	22.4
3	9.8
4	5.5
5	15.3

Fisherman Aspen 2

82.3 Acres



Legend

- Against State (Red)
- Private Line (Blue)
- Stand
- Intermittent Stream
- Forest Access Route
- Administrative Access Only
- Government Gravel/Dirt
- Private Gravel/Dirt
- Gate

Use QR Code to open Map in App





TIMBER SALE MAP

This information provided by authority of Part 525, 1994 PA 451, as amended.

Sale Number	Date	
53-013-24	09/21/2024	
Scale	Page	Of
1:10,000	3	3

Forest Management Unit	County	Mapped By: Joy Mittig
Pigeon River Country Mgt Unit	Cheboygan	Cruised By: Joy Mittig

Township	Range	Section(s) and Subdivision(s)
33N	01W	NENE; Sec. 8 SESW,SWSE; Sec. 17 NENW,NWNE; Sec. 19 W1/2NW; Sec. 29 W1/2SW; Sec. 30 SWNE,N1/2SE,SESE; Sec. 31

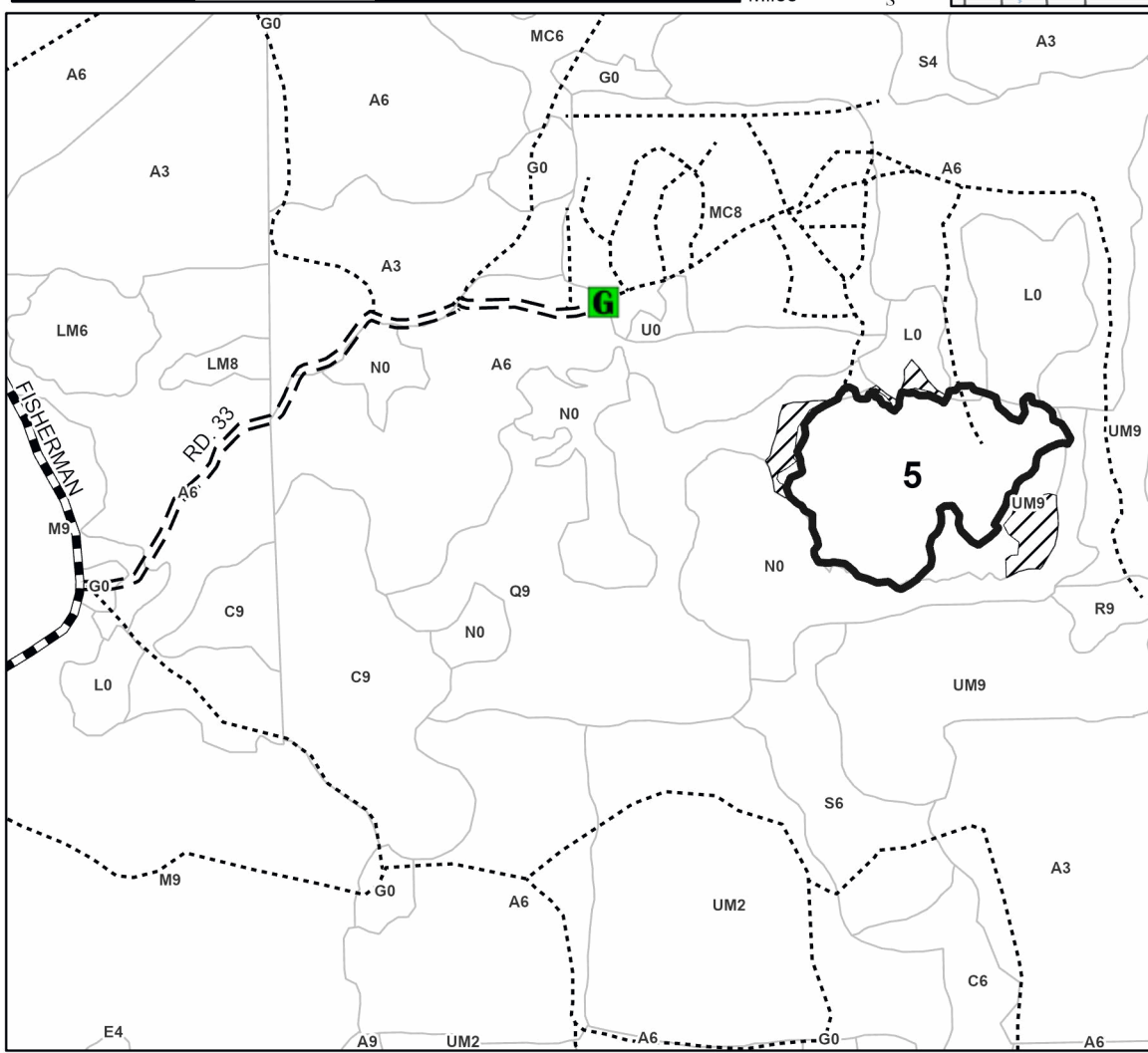
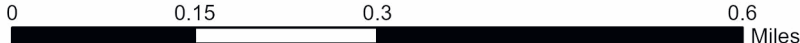
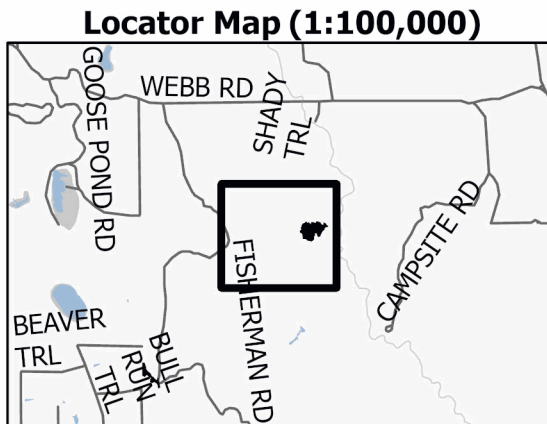
Cover Type			
A = Aspen	J = Jack Pine	O = Oak	U = Upland Brush
B = Paper Birch	K = Rock	P = Lowland Poplar	UM = Upland Mix Forest
C = Cedar	L = Lowland Brush	Q = Mixed Swamp Conifer	V = Bog or Marsh
D = Treed Bog	LM = Lowland Mix Forest	R = Red Pine	W = White Pine
E = Swamp Hardwoods	M = Maple, Beech, Birch	S = Black Spruce	X = Non Stocked
F = Spruce/Fir	MC = Mixed Conifer	T = Tamarack	Y = Sand
G = Grass	MD = Mixed Deciduous	Z = Water	
H = Hemlock	N = Marsh		

Density	
0 = Non Stocked	5 = Pole Timber Medium
1 = Seedling Sapling Poor	6 = Pole Timber Well
2 = Seedling Sapling Medium	7 = Saw Timber Poor
3 = Seedling Sapling Well	8 = Saw Timber Medium
4 = Pole Timber Poor	9 = Saw Timber Well

PU #	Acres
1	29.3
2	22.4
3	9.8
4	5.5
5	15.3

Fisherman Aspen 2

82.3 Acres



Legend

- Against State (Red)
- Retention Areas
- Stand
- Forest Access Route
- Administrative Access Only
- Government Gravel/Dirt
- Gate

Use QR Code to open Map in App

