



**DEPARTMENT OF NATURAL RESOURCES
STATE OF MICHIGAN
TIMBER SALE PROSPECTUS #7482**

SCHEDULED SALE DATE AND TIME: **10:00 a.m. (local time) on November 19, 2024.**

LOCATION: **ATLANTA MGMT UNIT, 13501 M 33, ATLANTA, MI 49709.**

CONTACT NAME: Matt Foster

PHONE NUMBER: (989) 619-5921

PROSPECTUS NOTE: The bidder is advised to inspect the sale area and review the location, estimated volumes, operating costs and contract terms of proposed sales. Please be aware that some landowners may request 60 days or more notice for access across their land.

Notice is hereby given that bids will be received by the Unit Manager, ATLANTA MANAGEMENT UNIT, for certain timber on the following described lands:

Black Mountain Scramble (54-005-24) / T36N, R01E, SEC. 1 , NW,NWNE,SWSW.

T36N, R01E, SEC. 12, N1/2SW,SESW,SE.

T36N, R01E, SEC. 2 , N1/2NE,S1/2SE.

Cheboygan County, Advertised Price \$162,424.85, 157.1 Acres, Aspen, Hardwood.

SALE NOTE: High recreational use area containing various motorized and non-motorized trails. It is encouraged operations take place between October 1st and April 1st to reduce any potential conflict with trail users. Payment Units 2-4 contain a mandatory chipping spec (no exceptions) which is reflected in the advertised price. Steep slopes within Units 6 & 7 with a road needed to access unit 7.

A recreation site such as a trail, pathway, or campground is within the sale area or the vicinity. Certain restrictions/specifications may be applicable including time restrictions.

TIMBER SALE INFORMATION

Black Mountain Scramble (54-005-24)

T36N, R01E, SEC. 1; T36N, R01E, SEC. 12; T36N, R01E, SEC. 2.

Cheboygan County (Advertised Price \$162,424.85)

SALE NOTE: High recreational use area containing various motorized and non-motorized trails. It is encouraged operations take place between October 1st and April 1st to reduce any potential conflict with trail users. Payment Units 2-4 contain a mandatory chipping spec (no exceptions) which is reflected in the advertised price. Steep slopes within Units 6 & 7 with a road needed to access unit 7.

A recreation site such as a trail, pathway, or campground is within the sale area or the vicinity. Certain restrictions/specifications may be applicable including time restrictions.

A timber sale contract for this lump sum, sealed bid timber sale will be awarded to the responsible bidder offering the highest sealed bid price. All units of volume listed below were estimated using the Inventory Manager computer program and the new Michigan taper model. Bids must be at or above the following advertised price for each product and species:

<u>PRODUCTS & SPECIES</u>	<u>ESTIMATED UNITS*</u>	<u>ADVERTISED PRICE</u>
Sawtimber		
Basswood	24.7 MBF	\$ 42.00 / MBF
Black/Red (Hybrid) Oak	129.8 MBF	\$ 75.00 / MBF
Red Maple	7.8 MBF	\$ 38.00 / MBF
Red Oak	298.8 MBF	\$ 123.00 / MBF
Red Pine	119.9 MBF	\$ 81.00 / MBF
Sugar Maple	156.6 MBF	\$ 212.00 / MBF
White Pine	37.0 MBF	\$ 68.00 / MBF
Pulpwood		
Basswood	97 Cords	\$ 8.00 / Cord
Jack Pine	31 Cords	\$ 7.80 / Cord
Mixed Aspen	1,422 Cords	\$ 14.20 / Cord
Mixed Hardwood	1,083 Cords	\$ 13.50 / Cord
Mixed Oak	1,131 Cords	\$ 18.65 / Cord
Red Pine	329 Cords	\$ 26.30 / Cord
White Pine	180 Cords	\$ 20.00 / Cord

* The total volume is statistically estimated within plus (+) or minus (-) 10.65 percent. There are an estimated 6,088 cords on this timber sale, plus or minus 649 cords at the 95% confidence level. The estimated units are final and not subject to adjustment. Prospective bidders are urged to examine this timber and to make their own estimates of quantity and quality.

BOND AND PAYMENT SCHEDULE:

1. A bond in the amount of \$8,121.24 to insure faithful performance of the conditions of the contract will be deposited by the successful bidder within 21 days of the sale award.
2. Cutting in any sale or unit without the required advance payment would be considered a trespass.
3. Total payment must be paid in advance or according to the following schedule :
 - (a) Ten percent (10%) of the sale value must be paid within 21 days of the sale award.
 - (b) The 10% down payment will be credited towards the first unit cut.
 - (c) Payment for each of the following units must be made before cutting begins in that unit:

PAYMENT UNIT NUMBER	PERCENT OF TOTAL SALE VALUE
01	3.8%
02	11.5%
03	17.6%
04	15.4%
05	4.0%
06	15.8%
07	16.2%
08	15.7%

4. If no cutting takes place, the 10% down payment will not be refunded.
5. Operations on the contract issued will terminate on 12/31/2027.

SALE STATISTICS

Volumes were calculated in cubic feet using the Michigan taper model. Cubic foot volume includes all wood inside bark for the product indicated. For display purposes, cubic feet were converted to cords and MBF using a simple conversion factor, e.g. 79 cubic feet per cord and 185 cubic feet per MBF. The cubic foot volumes are precise; the cords and MBF volumes are not. Cubic foot volume cannot be directly converted to cords or boards with precision.

SALE VOLUMES

The total estimated sale volume may not equal the sum of the species/products due to the nature of statistical calculations associated with double sampling methodology.

VOLUME			STATISTICAL RANGE IN CORDS	
TOTAL CUBIC FEET	TOTAL CORDS	PERCENT ERROR	MINIMUM	MAXIMUM
480,939	6,088	10.65%	5,439	6,736

VDU VOLUMES

A VDU is a Volume Determination Unit. Volumes and their associated statistics are calculated at the VDU level and summarized to the sale level. There is often a one to one relationship between a VDU and a Payment Unit, but not always, depending on the cruise design. Refer to the VDU TO PAYMENT UNIT table.

VDU	VOLUME		PERCENT ERROR	RANGE IN CORDS	
	TOTAL CUBIC FEET	TOTAL CORDS		MINIMUM	MAXIMUM
14	29,831	378	28.63%	270	486
26	75,418	955	21.52%	749	1,160
28	176,734	2,237	19.64%	1,798	2,677
35	26,416	334	50.48%	166	503
64	84,806	1,073	27.01%	784	1,363
69	87,734	1,111	25.18%	831	1,390
TOTAL:	480,939	6,088		4,596	7,579

VDU TO PAYMENT UNIT

When a VDU is associated with more than one Payment Unit (PU), the VDU volumes are assigned to the PU based on acres of the VDU within the PU.

VDU	VDU ACRES	PU	PU ACRES
14	7.5	1	7.5
26	23.2	6	23.2
28	66.0	2	17.0
		3	26.1
		4	22.9
35	7.9	5	7.9
64	28.1	8	28.1
69	24.4	7	24.4
TOTAL:	157.1		157.1

DESCRIPTION OF TIMBER BY PU (PU)

PU	MARKET GROUP	PRODUCT	QUANTITY	UNIT	ACRES	ADVERTISE PRICE
1	Red Pine	Sawtimber	4.5	MBF	7.5	\$6,180.80
	Sugar Maple		1.8	MBF		
	White Pine		5.9	MBF		
	Mixed Aspen	Pulpwood	294	Cords		
	<i>B. T. Aspen</i>		294	<i>Cords</i>		
	Mixed Hardwood		41	Cords		
	<i>Beech</i>		12	<i>Cords</i>		
	<i>Sugar Maple</i>		29	<i>Cords</i>		
	Red Pine		4	Cords		
	White Pine		10	Cords		
2	Basswood	Sawtimber	6.4	MBF	17.0	\$18,635.45
	Red Oak		30.3	MBF		
	Red Pine		6.6	MBF		
	Sugar Maple		39.9	MBF		
	White Pine		0.9	MBF		
	Basswood	Pulpwood	25	Cords		
	Mixed Aspen		23	Cords		
	<i>B. T. Aspen</i>		23	<i>Cords</i>		
	Mixed Hardwood		227	Cords		
	<i>Beech</i>		46	<i>Cords</i>		
	<i>Red Maple</i>		10	<i>Cords</i>		
	<i>Sugar Maple</i>		171	<i>Cords</i>		
	Mixed Oak		87	Cords		
	<i>Red Oak</i>		87	<i>Cords</i>		
	Red Pine		5	Cords		
	White Pine		12	Cords		
3	Basswood	Sawtimber	9.7	MBF	26.1	\$28,610.50
	Red Oak		46.5	MBF		
	Red Pine		10.1	MBF		
	Sugar Maple		61.2	MBF		
	White Pine		1.3	MBF		
	Basswood	Pulpwood	38	Cords		
	Mixed Aspen		36	Cords		
	<i>B. T. Aspen</i>		36	<i>Cords</i>		
	Mixed Hardwood		348	Cords		
	<i>Beech</i>		70	<i>Cords</i>		
	<i>Red Maple</i>		15	<i>Cords</i>		
	<i>Sugar Maple</i>		263	<i>Cords</i>		
	Mixed Oak		134	Cords		
	<i>Red Oak</i>		134	<i>Cords</i>		
	Red Pine		8	Cords		
	White Pine		19	Cords		
4	Basswood	Sawtimber	8.6	MBF	22.9	\$25,094.20
	Red Oak		40.8	MBF		
	Red Pine		8.9	MBF		
	Sugar Maple		53.7	MBF		
	White Pine		1.1	MBF		
	Basswood	Pulpwood	34	Cords		
	Mixed Aspen		31	Cords		
	<i>B. T. Aspen</i>		31	<i>Cords</i>		
	Mixed Hardwood		305	Cords		
	<i>Beech</i>		61	<i>Cords</i>		
	<i>Red Maple</i>		14	<i>Cords</i>		
	<i>Sugar Maple</i>		230	<i>Cords</i>		
	Mixed Oak		118	Cords		

DESCRIPTION OF TIMBER BY PU (PU), CON'T

PU	MARKET GROUP	PRODUCT	QUANTITY	UNIT	ACRES	ADVERTISE PRICE
4 con't	<i>Red Oak</i>	<i>Pulpwood</i>	118	<i>Cords</i>		
	Red Pine		7	Cords		
	White Pine		16	Cords		
5	Red Maple	Sawtimber	5.0	MBF	7.9	\$6,491.60
	Red Oak		11.1	MBF		
	Red Pine		4.3	MBF		
	White Pine		2.1	MBF		
	Mixed Aspen	Pulpwood	193	Cords		
	<i>B. T. Aspen</i>		178	<i>Cords</i>		
	<i>Quaking Aspen</i>		15	<i>Cords</i>		
	Mixed Hardwood		26	Cords		
	<i>Red Maple</i>		26	<i>Cords</i>		
	Mixed Oak		38	Cords		
	<i>Red Oak</i>		38	<i>Cords</i>		
	Red Pine		23	Cords		
	White Pine		2	Cords		
6	Red Oak	Sawtimber	66.5	MBF	23.2	\$25,634.95
	Red Pine		42.4	MBF		
	White Pine		25.7	MBF		
	Jack Pine	Pulpwood	11	Cords		
	Mixed Aspen		131	Cords		
	<i>B. T. Aspen</i>		131	<i>Cords</i>		
	Mixed Oak		259	Cords		
	<i>Red Oak</i>		259	<i>Cords</i>		
	Red Pine		117	Cords		
	White Pine		121	Cords		
7	Black/Red (Hybrid)	Sawtimber	112.2	MBF	24.4	\$26,331.20
	Red Maple		2.8	MBF		
	Red Oak		5.7	MBF		
	Red Pine		43.1	MBF		
	Mixed Aspen	Pulpwood	194	Cords		
	<i>B. T. Aspen</i>		194	<i>Cords</i>		
	Mixed Hardwood		66	Cords		
	<i>Red Maple</i>		66	<i>Cords</i>		
	Mixed Oak		302	Cords		
	<i>/Red (Hybrid) Oak</i>		294	<i>Cords</i>		
	<i>Red Oak</i>		8	<i>Cords</i>		
Red Pine		165	Cords			
8	Black/Red (Hybrid)	Sawtimber	17.6	MBF	28.1	\$25,446.15
	Red Oak		97.9	MBF		
	Jack Pine	Pulpwood	20	Cords		
	Mixed Aspen		520	Cords		
	<i>B. T. Aspen</i>		520	<i>Cords</i>		
	Mixed Hardwood		70	Cords		
	<i>Red Maple</i>		70	<i>Cords</i>		
	Mixed Oak		193	Cords		
	<i>/Red (Hybrid) Oak</i>		45	<i>Cords</i>		
	<i>Red Oak</i>		148	<i>Cords</i>		
	TOTAL:			774.6		
TOTAL:			4,273	Cords		

Sale Specific Conditions & Requirements

Sale Name: Black Mountain Scramble

Sale Number: 54-005-24 Seq#: 1

1 - Sale Area

1.2 - Boundaries

1.2.1 - Painted boundaries (9/19)

The sale boundary and Payment Unit boundaries are marked and identified by red and yellow paint. Exterior sale boundary lines against state are marked with red paint. Interior Payment Unit boundaries are marked with yellow paint. Retention patches are marked with red paint; no harvesting activities may occur within these areas. The painted boundary line trees are not Included Timber. Yellow painted trees designating an interior Payment Unit boundary are only to be cut when all surrounding Payment Units have been paid.

2 - Timber Specifications

2.1 - Included Timber

2.1.1 - Clearcut unit(s) with unmerchantable trees (6/14)

Within Payment Unit(s) 1-8, cut all trees that are two (2) inches or more at DBH, except do not cut any trees marked in teal or pink paint. In addition:

- Within Payment Unit 1, do not cut hemlock.
- Within Payment Unit 8, do not cut red pine or white pine.

Special protection areas identified in accordance with condition 3.4.3, within clearcutting unit boundaries, are not Included Timber and are to be protected.

2.2 - Utilization

2.2.2 - Chipping required (2/18)

Payment Units 2-4 must be chip harvested to facilitate subsequent planting operations. The Purchaser has the option to produce sawlogs or pulpwood bolts, but the remaining portion of the trees must be chipped and hauled. The chipping requirement cannot be waived. Products may be produced as roundwood and forwarded to decking areas in final product length, but the tops must be left intact and skidded to the landing for chipping in order to minimize the amount of residual slash. The requirement to retain approximately 1/6 to 1/3 of tree tops and limbs less than four inches in diameter is still applicable (G. C. & R. 2.2).

2.2.3 - Stump heights (4/07)

Stump heights within Payment Units 2-4 shall not exceed 6 inches for all trees. This is in order to facilitate planting operations. If harvested with snow on conditions, the Purchaser may be required to come back during snow-off conditions and cut stumps down to specified height.

3 - Payments

3.3 - Pre-measured Sales

3.3.4 - Dividing payment units (7/14)

Payment Unit(s) may be divided at the request of the Purchaser and upon approval of the Unit Manager. Dividing Payment Units is a contract modification which requires a Timber Sale Contract Amendment. There will be only one division per Payment Unit.

3.4 - Damaged Timber

3.4.1 - Damaged timber (7/16)

General Condition and Requirement 3.4 Damaged Timber, defines liquidated damages for undesignated live merchantable trees which are cut or injured. No damage is acceptable to undesignated live merchantable trees. Within the Sale Area, if more than 5% of trees (> 4.5" DBH) within a specified area of the sale are damaged, liquidated damages will be assessed for all trees damaged. Rates will be in accordance with General Condition and Requirement 3.4 Damaged Timber.

3.4.2 - Special Protection Trees (4/14)

The Purchaser shall not cut live or dead special protection trees within cutting units or clearings. Special protection trees are marked with teal or pink paint. If the Purchaser's operations have cut or damaged special protection trees through carelessness, the Purchaser shall pay \$300 as fixed, agreed and liquidated damages for each special protection tree cut or damaged. Such payment does not constitute ownership of the undesignated timber.

3.4.3 - Special Protection Areas (8/11)

The Purchaser shall protect special protection areas from damage by the Purchaser's operations. Special protection areas are vernal pools marked with Red X's within Payment Unit 5. The Purchaser shall not cut live or dead trees within special protection areas. If the Purchaser's operations have cut or damaged special protection areas through carelessness, the Purchaser shall pay \$500 as fixed, agreed and liquidated damages for each acre or part thereof cut or damaged. Such payment does not constitute ownership of the undesignated timber.

4 - Transportation

4.1 - Construction

4.1.3 - Slash and earthen piles (8/04)

Piles or windrows of earth along roads and landings that have been widened or constructed shall be leveled. Slash from road maintenance or construction, including stumps, shall be chipped, utilized or otherwise removed from the sale.

4.1.6 - Road construction (4/24)

Construction of new roads or improvements of existing roads shall be done in such a way as to minimize the environmental and visual impacts. Merchantable trees shall be cut and utilized unless otherwise directed. Non-merchantable trees shall be severed and laid flat on the ground. Slash shall be chipped, utilized or otherwise removed from the sale. Stumps shall be set upright, not left on edge, and be moved at least 10 feet away from the road edge. Disturbed soil shall be feathered into the woods and not left in berms or windrows.

4.1.7 - Road closure (10/11)

All new roads built into the sale must be blocked to vehicle traffic within 30 days of completion of hauling. Overgrown roads that are reopened shall be considered new roads. In general, this will require constructing a four (4') foot high berm of stumps and logs covered with earth. These roads must be rendered impassable to cars and trucks. All stumps from road building and landing construction must be reserved to block any newly constructed roads upon completion of the sale. These stumps must be scattered along the road system to prohibit vehicular movement. Temporary berms may be required if no sale activity occurs for 30 or more consecutive days. Contact the Sale Administrator for specific details of design and placement.

4.1.11 - Permits (2/12)

The Purchaser will secure any necessary permits that may be required.

4.2 - Maintenance

4.2.4 - Grading (10/16)

For completion of the sale, state forest roads must be graded. In general, this will require a road grader or bulldozer to shape up the roads after forest products have been hauled off site. This includes cleaning of drainage areas, grading, crowning and filling with gravel, if necessary. The grading equipment to be used must be approved by the Unit Manager or his/her representative.

4.2.5 - Two wheel drive condition (2/04)

All existing trail roads on and adjacent to the sale area must be passable by two-wheel drive traffic for the duration of the sale.

5 - Operations

5.1 - Notification

5.1.1 - Pre-sale conference (10/16)

A pre-sale conference on site between the Purchaser and sale administrator is required prior to beginning any operations to determine landing and road locations. The Unit Manager or his/her representative must be contacted at least 10 days in advance to schedule the conference.

5.1.4 - Post-sale conference (10/16)

A post-sale conference on site between the Purchaser and sale administrator is required 5 days prior to the completion of active logging operations to determine clean-up and repair of landings, road edges, and the fulfillment of other contract specifications.

5.2 - Conduct of Operations

5.2.1 - Slash

5.2.1.8 - Slash height (12/08)

No slash or tree tops, within Payment Unit(s) 1 and 5-8, may exceed 24 inches in height.

5.2.2 - Hazard Trees/Snags

5.2.2.1 - Den trees (10/16)

Obvious hollow and/or den trees shall be protected and left standing unless they are a safety hazard.

5.2.3 - Operating Restrictions

5.2.3.5 - Oak wilt restriction (1/18)

Within the Sale Area, unless changed by written agreement, cutting, skidding, hauling within the sale and brushing of access roads to the sale are not permitted during the period of April 15 to July 15. Operations may be allowed if specific steps are taken to prevent damaging uncut oak during the high risk period. Those steps may include completing all road brushing before April 15th and clearing a tree-length buffer along uncut oak cover before April 15th. This is necessary to reduce the spread of oak wilt. For more information, contact the Unit Manager or his/her representative.

5.2.4 - Dead and Down Creation

5.2.4.4 - Dead and down creation, grouse (6/18)

To encourage grouse and other wildlife, in Payment Unit(s) 1 and 5-8, leave one 12" or larger diameter (or largest diameter trees within stand) whole tree on the ground for every 2 acres, preferably a hardwood species such as oak or maple or if no hardwoods are present, a pine species (white or red). These trees will be evenly scattered throughout the unit, preferably at least two chains from any roads, two-tracks, or trails open to vehicles.

5.2.32 - Decking/landing restoration (9/13)

All decking and landing areas must have the surface area restored to a condition equal to or better than before. This is to ensure the proper regeneration of the stand. Wood debris, chips and "cookies" from trimmings must be removed or scattered away from landing and loading areas and may not be windrowed on the edge.

5.2.38 - No decking against live trees (2/04)

Cut products may not be decked against unmarked or designated leave trees.

5.2.39 - ORV trail/route protection (4/18)

The Black Lake ORV Trail and Route is present within the sale boundary and is shown on the Timber Sale Map. Trees with orange ORV markers shall be cut off above the markers and at least 5 feet above ground. All stumps within 5 feet of the trail must be cut flush with the ground. Maintain a 20-foot-wide slash, debris, and rut free zone daily using the ORV trail or route as the centerline. Do not run equipment down the ORV trail or route. Skidding across the trail or route may only occur in 1 or 2 locations per Payment Unit and approved by the Sale Administrator.

5.2.40 - Pathway protection (10/10)

The Black Mountain Pathway is a Non-Motorized (Biking, Hiking, Horse and Skiing) Trail that is within Payment Units 7 & 8 and is shown on the Timber Sale Map. Do not cut or damage posts with blue pathway markers. Any trees with blue pathway markers should be cut above the marker. Maintain a 20-foot-wide slash, debris, and rut free zone daily, using the pathway as the centerline. Do not run equipment or trucks down the pathway. Skidding across the trail may only occur in locations approved by the Sale Administrator.

5.2.41 - Snowmobile trail protection (9/11)

LP 99 is a snowmobile trail within Payment Units 4 & 6 and is shown on the Timber Sale Map. Do not cut or damage posts with orange trail markers or traffic control signs. If the trail is used, it must be maintained and restored to a condition equal to or better than before the sale. The road maintenance/restoration must be done prior to December 1. If the trail is used for

hauling, it must be graded to the satisfaction of the Unit Manager or his/her representative prior to December 1. If the trail road is to be used for hauling during the snowmobile season, then a snow-covered base must be left on the trail. The snowmobile trail may only be crossed at right angles and in approved locations. Maintain a 20-foot-wide slash, debris, and rut free zone daily using the snowmobile trail as the centerline. No decking of forest products will be permitted along the snowmobile trail. All stumps within 20 feet of the snowmobile trail must be cut at ground level.

5.4 - Soil Protection

5.4.4 - Slope protection (9/19)

Skid trails and roads on slopes shall be water barred with slash, stumps, and/or clean straw bales native to the area as soon as use is complete to prevent erosion.

5.8 - Protection of Endangered Species

5.8.5 - Protection of raptor nests (3/13)

All trees with raptor nests will be protected if found during harvesting operations. Notification will be made to the Unit Manager or his/her representative who will notify the Wildlife Biologist so an on-site evaluation and recommendation can be made, if necessary.

6 - Safety and Fire Prevention

6.2 - Signing

6.2.1 - Road posting (10/20)

The Purchaser is responsible for posting and maintaining caution signs on any haul routes prior to beginning operations. The road must be posted at appropriate distances from the Sale Area to warn of logging activity and truck traffic. Signs must be removed when harvest operations are suspended or completed. The Purchaser will provide these signs.

6.2.2 - Snowmobile trail posting (10/20)

The Purchaser is responsible for posting and maintaining caution signs on the Snowmobile Trail (LP 99) prior to beginning operations during the snowmobile season (approximately December 1 to March 31). The trail must be posted at appropriate distances from the Sale Area to warn of logging activity and truck traffic. Signs must be removed when harvest operations are suspended or completed. The Purchaser will provide these signs.

6.2.3 - Recreational trail posting (10/20)

The Purchaser is responsible for posting and maintaining caution signs on the Black Lake ORV Trail/Route and The Black Mountain Pathway prior to beginning operations. The trail must be posted at appropriate distances from the Sale Area to warn of logging activity and truck traffic at both ends of the trail. Signs must be removed when harvest operations are suspended or completed. The Purchaser will provide these signs.



TIMBER SALE MAP

This information provided by authority of Part 525, 1994 PA 451, as amended.

Sale Number
54-005-24

Date
05/19/2024

Forest Management Unit
Atlanta Mgt Unit

County
Cheboygan

Mapped By: T. Kubitsky
Cruised By: T. Kubitsky

Scale
1:15,840

Page
1

Of
2

Township
36N

Range
01E

Section(s) and Subdivision(s)
Sec. 1 NW,NWNE,SWSW; Sec. 12 N1/2SW,SESW,SE; Sec. 2 N1/2NE,S1/2SE;

Cover Type

A = Aspen	J = Jack Pine	O = Oak	U = Upland Brush
B = Paper Birch	K = Rock	P = Lowland Poplar	UM = Upland Mix Forest
C = Cedar	L = Lowland Brush	Q = Mixed Swamp Conifer	V = Bog or Marsh
D = Treed Bog	LM = Lowland Mix Forest	R = Red Pine	W = White Pine
E = Swamp Hardwoods	M = Maple, Beech, Birch	S = Black Spruce	X = Non Stocked
F = Spruce/Fir	MC = Mixed Conifer	T = Tamarack	Y = Sand
G = Grass	MD = Mixed Deciduous	Z = Water	
H = Hemlock	N = Marsh		

Density

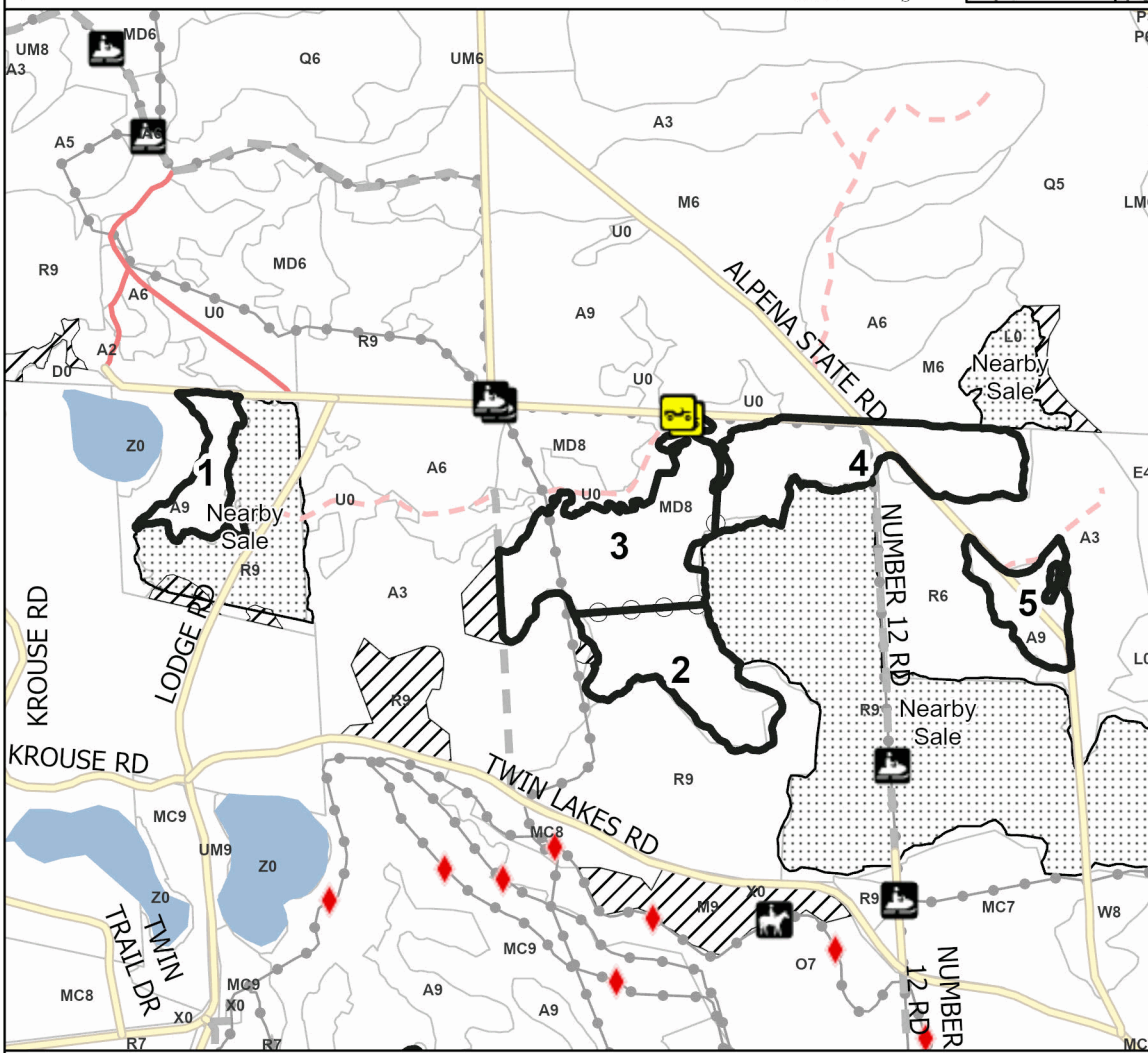
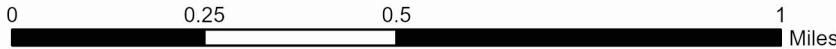
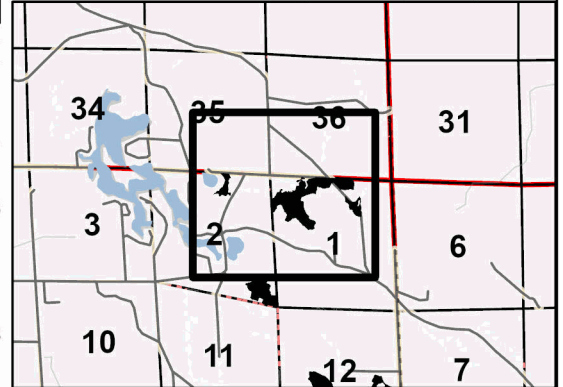
0 = Non Stocked	5 = Pole Timber Medium
1 = Seedling Sapling Poor	6 = Pole Timber Well
2 = Seedling Sapling Medium	7 = Saw Timber Poor
3 = Seedling Sapling Well	8 = Saw Timber Medium
4 = Pole Timber Poor	9 = Saw Timber Well

PU #	Acres	PU #	Acres
1	7.5	5	7.9
2	17	6	23.2
3	26.1	7	24.4
4	22.9	8	28.1

Black Mountain Scramble

157.1 Acres

Locator Map (1:200,000)



Legend

- Against State (Red)
- Payment Unit (Yellow)
- Retention Areas
- Nearby Timber Sales
- Stand
- Secondary Forest Road
- Forest Access Route
- Admin Access Route
- County Road
- Recreational Trail
- Lakes and Rivers

Use QR Code to open Map in App





TIMBER SALE MAP

This information provided by authority of Part 525, 1994 PA 451, as amended.

Sale Number	Date	
54-005-24	05/19/2024	
Scale	Page	Of
1:15,840	2	2

Forest Management Unit	County	Mapped By: T. Kubitskey
Atlanta Mgt Unit	Cheboygan	Cruised By: T. Kubitskey

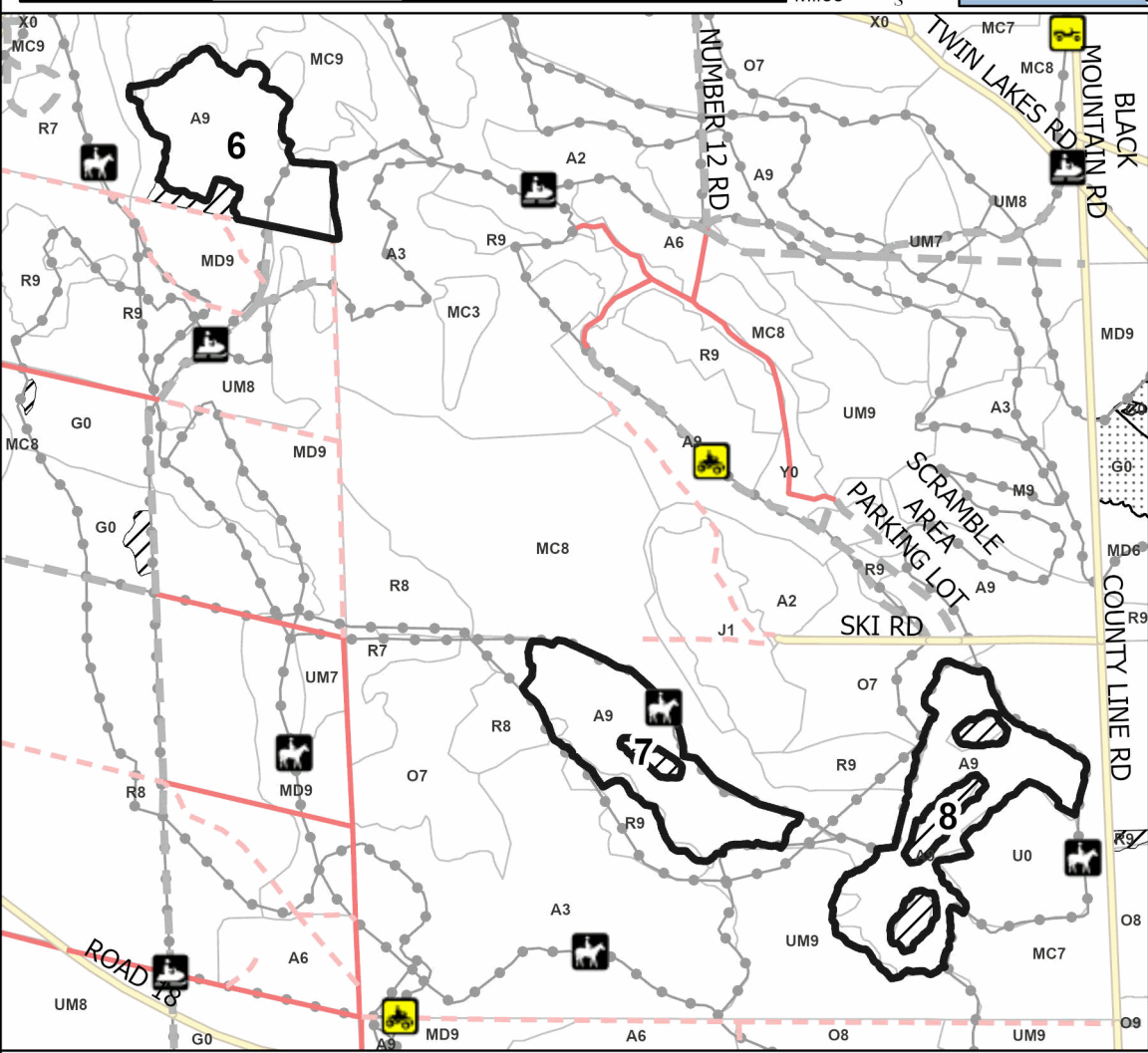
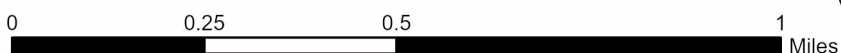
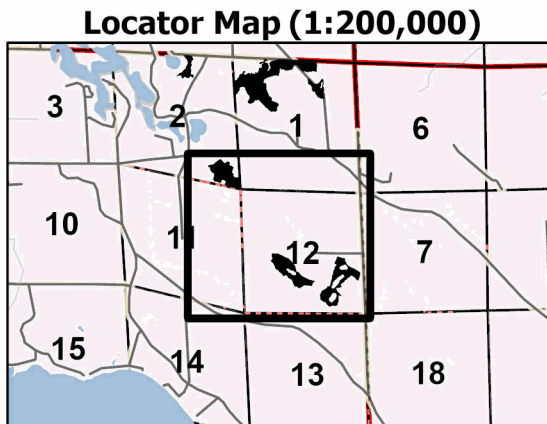
Township	Range	Section(s) and Subdivision(s)
36N	01E	Sec. 1 NW,NWNE,SWSW; Sec. 12 N1/2SW,SESW,SE; Sec. 2 N1/2NE,S1/2SE;

Cover Type			
A = Aspen	J = Jack Pine	O = Oak	U = Upland Brush
B = Paper Birch	K = Rock	P = Lowland Poplar	UM = Upland Mix Forest
C = Cedar	L = Lowland Brush	Q = Mixed Swamp Conifer	V = Bog or Marsh
D = Treed Bog	LM = Lowland Mix Forest	R = Red Pine	W = White Pine
E = Swamp Hardwoods	M = Maple, Beech, Birch	S = Black Spruce	X = Non Stocked
F = Spruce/Fir	MC = Mixed Conifer	T = Tamarack	Y = Sand
G = Grass	MD = Mixed Deciduous	Z = Water	
H = Hemlock	N = Marsh		

Density	
0 = Non Stocked	5 = Pole Timber Medium
1 = Seedling Sapling Poor	6 = Pole Timber Well
2 = Seedling Sapling Medium	7 = Saw Timber Poor
3 = Seedling Sapling Well	8 = Saw Timber Medium
4 = Pole Timber Poor	9 = Saw Timber Well

PU #	Acres	PU #	Acres
1	7.5	5	7.9
2	17	6	23.2
3	26.1	7	24.4
4	22.9	8	28.1

Black Mountain Scramble
157.1 Acres



Legend

- Against State (Red)
- Retention Areas
- Nearby Timber Sales
- Stand
- Secondary Forest Road
- Forest Access Route
- Admin Access Route
- County Road
- Recreational Trail

Map Note: The only access into unit 6 is the Snowmobile Trail/ORV Route from the south. Access for Units 7 & 8 will be from Ski Rd.

Use QR Code to open Map in App