



**DEPARTMENT OF NATURAL RESOURCES
STATE OF MICHIGAN
TIMBER SALE PROSPECTUS #7423**

SCHEDULED SALE DATE AND TIME: 10:00 a.m. (local time) on May 21, 2024.

LOCATION: ATLANTA MGMT UNIT, 13501 M 33, ATLANTA, MI 49709.

CONTACT NAME: Matt Foster

PHONE NUMBER: (989) 619-5921

PROSPECTUS NOTE: The bidder is advised to inspect the sale area and review the location, estimated volumes, operating costs and contract terms of proposed sales. Please be aware that some landowners may request 60 days or more notice for access across their land.

Notice is hereby given that bids will be received by the Unit Manager, ATLANTA MANAGEMENT UNIT, for certain timber on the following described lands:

Kinzie Conversion Oak (54-016-23) / T31N, R02E, SEC. 23, E1/2NW, W1/2NE, N1/2SW, NWSE.
Montmorency County, Advertised Price \$85,432.60, 70.1 Acres, Hardwood, Red Oak.

SALE NOTE: 2.2.2 - Chipping required (2/18)

The Sale Area must be chip harvested to facilitate subsequent planting operations.

2.2.3 - Stump heights (4/07)

Stump heights within the Sale Area shall not exceed 6 inches for all trees. This is in order to facilitate planting operations.

5.2.3.4 - Oak wilt restriction, no exceptions (1/18)

Within Payment Unit 1, cutting, skidding, hauling within the sale and brushing of access roads to the sale are not permitted during the period of April 15 to July 15. No exceptions will be granted.

5.2.3.5 - Oak wilt restriction (1/18)

Within Payment Unit 2 & 3, unless changed by written agreement, cutting, skidding, hauling within the sale and brushing of access roads to the sale are not permitted during the period of April 15 to July 15.

TIMBER SALE INFORMATION

Kinzie Conversion Oak (54-016-23)

T31N, R02E, SEC. 23.

Montmorency County (Advertised Price \$85,432.60)

SALE NOTE: 2.2.2 - Chipping required (2/18)

The Sale Area must be chip harvested to facilitate subsequent planting operations.

2.2.3 - Stump heights (4/07)

Stump heights within the Sale Area shall not exceed 6 inches for all trees. This is in order to facilitate planting operations.

5.2.3.4 - Oak wilt restriction, no exceptions (1/18)

Within Payment Unit 1, cutting, skidding, hauling within the sale and brushing of access roads to the sale are not permitted during the period of April 15 to July 15. No exceptions will be granted.

5.2.3.5 - Oak wilt restriction (1/18)

Within Payment Unit 2 & 3, unless changed by written agreement, cutting, skidding, hauling within the sale and brushing of access roads to the sale are not permitted during the period of April 15 to July 15.

A timber sale contract for this lump sum, sealed bid timber sale will be awarded to the responsible bidder offering the highest sealed bid price. All units of volume listed below were estimated using the Inventory Manager computer program and the new Michigan taper model. Bids must be at or above the following advertised price for each product and species:

<u>PRODUCTS & SPECIES</u>	<u>ESTIMATED UNITS*</u>	<u>ADVERTISED PRICE</u>
Sawtimber		
Basswood	11.4 MBF	\$ 89.00 / MBF
Black/Red (Hybrid) Oak	11.4 MBF	\$ 124.00 / MBF
Red Oak	271.8 MBF	\$ 195.00 / MBF
Pulpwood		
Basswood	14 Cords	\$ 15.65 / Cord
Mixed Aspen	168 Cords	\$ 25.00 / Cord
Mixed Hardwood	129 Cords	\$ 24.90 / Cord
Mixed Oak	602 Cords	\$ 33.75 / Cord
Red Pine	6 Cords	\$ 40.20 / Cord
White Pine	65 Cords	\$ 27.90 / Cord

* The total volume is statistically estimated within plus (+) or minus (-) 14.97 percent. There are an estimated 1,647 cords on this timber sale, plus or minus 247 cords at the 95% confidence level. The estimated units are final and not subject to adjustment. Prospective bidders are urged to examine this timber and to make their own estimates of quantity and quality.

BOND AND PAYMENT SCHEDULE:

1. A bond in the amount of \$4,271.63 to insure faithful performance of the conditions of the contract will be deposited by the successful bidder within 21 days of the sale award.
2. Cutting in any sale or unit without the required advance payment would be considered a trespass.
3. Total payment must be paid in advance or according to the following schedule:
 - (a) Ten percent (10%) of the sale value must be paid within 21 days of the sale award.
 - (b) The 10% down payment will be credited towards the first unit cut.
 - (c) Payment for each of the following units must be made before cutting begins in that unit:

<u>PAYMENT UNIT NUMBER</u>	<u>PERCENT OF TOTAL SALE VALUE</u>
01	18.0%
02	42.2%
03	39.8%

4. If no cutting takes place, the 10% down payment will not be refunded.
5. Operations on the contract issued will terminate on 06/30/2026.

SALE STATISTICS

Volumes were calculated in cubic feet using the Michigan taper model. Cubic foot volume includes all wood inside bark for the product indicated. For display purposes, cubic feet were converted to cords and MBF using a simple conversion factor, e.g. 79 cubic feet per cord and 185 cubic feet per MBF. The cubic foot volumes are precise; the cords and MBF volumes are not. Cubic foot volume cannot be directly converted to cords or boards with precision.

SALE VOLUMES

The total estimated sale volume may not equal the sum of the species/products due to the nature of statistical calculations associated with double sampling methodology.

VOLUME			STATISTICAL RANGE IN CORDS	
TOTAL CUBIC FEET	TOTAL CORDS	PERCENT ERROR	MINIMUM	MAXIMUM
130,144	1,647	14.97%	1,401	1,894

VDU VOLUMES

A VDU is a Volume Determination Unit. Volumes and their associated statistics are calculated at the VDU level and summarized to the sale level. There is often a one to one relationship between a VDU and a Payment Unit, but not always, depending on the cruise design. Refer to the VDU TO PAYMENT UNIT table.

	VOLUME			RANGE IN CORDS	
VDU	TOTAL CUBIC FEET	TOTAL CORDS	PERCENT ERROR	MINIMUM	MAXIMUM
50	22,700	287	33.19%	192	383
51	107,443	1,360	17.47%	1,122	1,598
TOTAL:	130,144	1,647		1,314	1,980

VDU TO PAYMENT UNIT

When a VDU is associated with more than one Payment Unit (PU), the VDU volumes are assigned to the PU based on acres of the VDU within the PU.

VDU	VDU ACRES	PU	PU ACRES
50	10.6	1	10.6
51	59.5	1	4.9
		2	28.1
		3	26.5
TOTAL:	70.1		70.1

DESCRIPTION OF TIMBER BY PU (PU)

PU	MARKET GROUP	PRODUCT	QUANTITY	UNIT	ACRES	ADVERTISE PRICE
1	Basswood	Sawtimber	0.9	MBF	15.5	\$15,358.55
	Black/Red (Hybrid		0.9	MBF		
	Red Oak		32.6	MBF		
	Basswood	Pulpwood	1	Cords		
	Mixed Aspen		168	Cords		
	<i>B. T. Aspen</i>		157	Cords		
	<i>Balsam Poplar</i>		5	Cords		
	<i>Quaking Aspen</i>		6	Cords		
	Mixed Hardwood		40	Cords		
	<i>Beech</i>	<i>Sawtimber</i>	0.1	MBF		
	<i>Sugar Maple</i>		0.4	MBF		
	<i>Beech</i>	<i>Pulpwood</i>	1	Cords		
	<i>Red Maple</i>		33	Cords		
	<i>Sugar Maple</i>		5	Cords		
	Mixed Oak		100	Cords		
	<i>/Red (Hybrid) Oak</i>		2	Cords		
	<i>Red Oak</i>		98	Cords		
	White Pine		8	Cords		
	<i>White Pine</i>	<i>Sawtimber</i>	0.4	MBF		
	<i>White Pine</i>	<i>Pulpwood</i>	7	Cords		
2	Basswood	Sawtimber	5.4	MBF	28.1	\$36,105.50
	Black/Red (Hybrid		5.4	MBF		
	Red Oak		123.1	MBF		
	Basswood	Pulpwood	7	Cords		
	Mixed Hardwood		47	Cords		
	<i>Beech</i>	<i>Sawtimber</i>	0.8	MBF		
	<i>Sugar Maple</i>		2.4	MBF		
	<i>Beech</i>	<i>Pulpwood</i>	3	Cords		
	<i>Red Maple</i>		11	Cords		
	<i>Sugar Maple</i>		26	Cords		
	Mixed Oak		259	Cords		
	<i>/Red (Hybrid) Oak</i>		14	Cords		
	<i>Red Oak</i>		245	Cords		
	Red Pine		3	Cords		
	White Pine		29	Cords		
	<i>White Pine</i>	<i>Sawtimber</i>	2.2	MBF		
	<i>White Pine</i>	<i>Pulpwood</i>	25	Cords		
3	Basswood	Sawtimber	5.1	MBF	26.5	\$33,993.45
	Black/Red (Hybrid		5.1	MBF		
	Red Oak		116.1	MBF		
	Basswood	Pulpwood	6	Cords		
	Mixed Hardwood		43	Cords		
	<i>Beech</i>	<i>Sawtimber</i>	0.8	MBF		
	<i>Sugar Maple</i>		2.2	MBF		
	<i>Beech</i>	<i>Pulpwood</i>	3	Cords		
	<i>Red Maple</i>		10	Cords		
	<i>Sugar Maple</i>		24	Cords		
	Mixed Oak		243	Cords		
	<i>/Red (Hybrid) Oak</i>		12	Cords		
	<i>Red Oak</i>		231	Cords		
	Red Pine		3	Cords		
	White Pine		28	Cords		
	<i>White Pine</i>	<i>Sawtimber</i>	2.0	MBF		
	<i>White Pine</i>	<i>Pulpwood</i>	24	Cords		

TOTAL:	294.6	MBF
TOTAL:	985	Cords

Sale Specific Conditions & Requirements

Sale Name: Kinzie Conversion Oak

Sale Number: 54-016-23 Seq#: 2

1 - Sale Area

1.2 - Boundaries

1.2.1 - Painted boundaries (9/19)

The sale boundary and Payment Unit boundaries are marked and identified by red paint, along with a forest road and a powerline. Exterior sale boundary lines against state are marked with red paint. Interior Payment Unit boundaries are unpainted, with the Payment Unit boundary separating Payment Units 2 & 3 being unpainted and identified by an unnamed forest road and the Payment Unit boundaries separating Payment Units 1 & 2 and 1 & 3 being unpainted and identified by a powerline. The painted boundary line trees are not Included Timber and are to be protected.

2 - Timber Specifications

2.2 - Utilization

2.2.2 - Chipping required (2/18)

The Sale Area must be chip harvested to facilitate subsequent planting operations. The Purchaser has the option to produce sawlogs or pulpwood bolts, but the remaining portion of the trees must be chipped and hauled. Products may be produced as roundwood and forwarded to decking areas in final product length, but the tops must be left intact and skidded to the landing for chipping in order to minimize the amount of residual slash. If market conditions limit the practicality of chipping, a written chipping exemption is possible only in the case the Sale Administrator determines that operational modifications will not inhibit future planting operations. Conditions that satisfy this modification require:

- Trees greater than four (4) inches at DBH must be cut to a two (2) inch top or smaller.
- Sub-merchantable trees and hardwood limbs four (4) inches or greater where they attach to the stem, must be cut/reduced to four (4) foot lengths or smaller.
- Slash must be evenly dispersed throughout the Payment Unit and not be more than two feet high.

The requirement to retain approximately 1/6 to 1/3 of tree tops and limbs less than four inches in diameter is still applicable (G. C. & R. 2.2).

2.2.3 - Stump heights (4/07)

Stump heights within the Sale Area shall not exceed 6 inches for all trees. This is in order to facilitate planting operations.

3 - Payments

3.3 - Pre-measured Sales

3.3.4 - Dividing payment units (7/14)

Payment Unit(s) exceeding \$25,000 may be divided at the request of the Purchaser and upon approval of the Unit Manager. Dividing Payment Units is a contract modification which requires a Timber Sale Contract Amendment. There will be only one division per Payment Unit.

3.6 - Payment Unit Cutting Schedule

3.6.8 - Operating period (5/16)

Once cutting begins, operations must continue until all Payment Units are completed.

4 - Transportation

4.1 - Construction

4.1.3 - Slash and earthen piles (8/04)

Piles or windrows of earth along roads and landings that have been widened or constructed shall be leveled. Slash from road maintenance or construction, including stumps, shall be dispersed throughout the sale.

4.1.6 - Road construction (1/09)

Improvements of existing roads shall be done in such a way as to minimize the environmental and visual impacts.

Merchantable trees shall be cut and utilized unless otherwise directed. Non-merchantable trees shall be severed and laid flat on the ground. Slash shall be scattered, and not left in windrows and kept a minimum of 10 feet back from the road edge. Stumps shall be set upright, not left on edge, and be moved at least 10 feet away from the road edge. Disturbed soil shall be feathered into the woods and not left in berms or windrows.

4.2 - Maintenance

4.2.2 - Fill material (4/07)

To maintain roads, fill material may be needed in areas where "holes" exist or may be expected to develop. This fill material should be placed before trucking begins. Acceptable fill material shall not contain clay or organic matter.

4.2.3 - Road maintenance (8/13)

The following road maintenance is required: Within 60 days of completion of hauling, or if no hauling occurs for 60 days, the road leading to private land must be maintained and graded. This includes cleaning of drainage areas, grading, crowning and filling with gravel, if necessary. Damages will be assessed if grading/repair does not occur. The road must remain unobstructed to allow passage of two-wheel drive traffic for the duration of the timber sale.

5 - Operations

5.1 - Notification

5.1.1 - Pre-sale conference (10/16)

A pre-sale conference between the Purchaser and sale administrator is required prior to beginning any operations to determine landing and road locations. The Unit Manager or his/her representative must be contacted at least 10 days in advance to schedule the conference.

5.1.4 - Post-sale conference (10/16)

A post-sale conference on site between the Purchaser and sale administrator is required 5 days prior to the completion of active logging operations to determine clean-up and repair of landings, road edges, and the fulfillment of other contract specifications.

5.2 - Conduct of Operations

5.2.2 - Hazard Trees/Snags

5.2.2.1 - Den trees (10/16)

Obvious hollow and/or den trees shall be protected and left standing unless they are a safety hazard.

5.2.3 - Operating Restrictions

5.2.3.4 - Oak wilt restriction, no exceptions (1/18)

Within Payment Unit 1, cutting, skidding, hauling within the sale and brushing of access roads to the sale are not permitted during the period of April 15 to July 15. No exceptions will be granted. This is necessary to reduce the spread of oak wilt.

5.2.3.5 - Oak wilt restriction (1/18)

Within Payment Units 2 & 3, unless changed by written agreement, cutting, skidding, hauling within the sale and brushing of access roads to the sale are not permitted during the period of April 15 to July 15. Operations may be allowed if specific steps are taken to prevent damaging uncut oak during the high risk period. Those steps may include completing all road brushing before April 15th and clearing a tree-length buffer along uncut oak cover before April 15th. This is necessary to reduce the spread of oak wilt. For more information, contact the Unit Manager or his/her representative.

5.2.32 - Decking/landing restoration (9/13)

All decking and landing areas must have the surface area restored to a condition equal to or better than before. This is to ensure the proper regeneration of the stand. Wood debris, chips and "cookies" from trimmings must be removed or scattered away from landing and loading areas and may not be windrowed on the edge.

5.4 - Soil Protection

5.4.1 - Rutting restriction, general (7/16)

Operations are to cease immediately if equipment and weather conditions result in rutting of roads and/or skid trails which is 12 inches or greater in depth and 50 feet in length. The Unit Manager or his/her representative may restrict hauling and/or skidding if ruts exceed the specified depth. With the Unit Manager or his/her representative's approval, the Purchaser may return to the area when the risk of rutting has decreased.

5.4.2 - Skid trails (2/04)

Skid trails up and down slopes should be avoided. If however this is unavoidable, these trails will be left in a non-erodible condition using water bars, logs, and slash. Placing of slash on these skid trails while logging is ongoing may alleviate need for any further action. At the direction of the sale administrator, seed, fertilizer, and mulch may also be required.

5.8 - Protection of Endangered Species

5.8.5 - Protection of raptor nests (3/13)

All trees with raptor nests will be protected if found during harvesting operations. Notification will be made to the Unit Manager or his/her representative who will notify the Wildlife Biologist so an on-site evaluation and recommendation can be made, if necessary.

6 - Safety and Fire Prevention

6.2 - Signing

6.2.1 - Road posting (10/20)

The Purchaser is responsible for posting and maintaining caution signs on Kinzie Road prior to beginning operations. The road must be posted at appropriate distances from the Sale Area to warn of logging activity and truck traffic. Signs must be removed when harvest operations are suspended or completed. The Purchaser will provide these signs.

**TIMBER SALE MAP***This information provided by authority of Part 525, 1994 PA 451, as amended.*

Sale Number	Year
54 - 016	23

Forest Management Unit Atlanta	County Montmorency	Mapped By Natzke	Date 08/29/2023	Page 1	of 1
Cruised By Natzke					

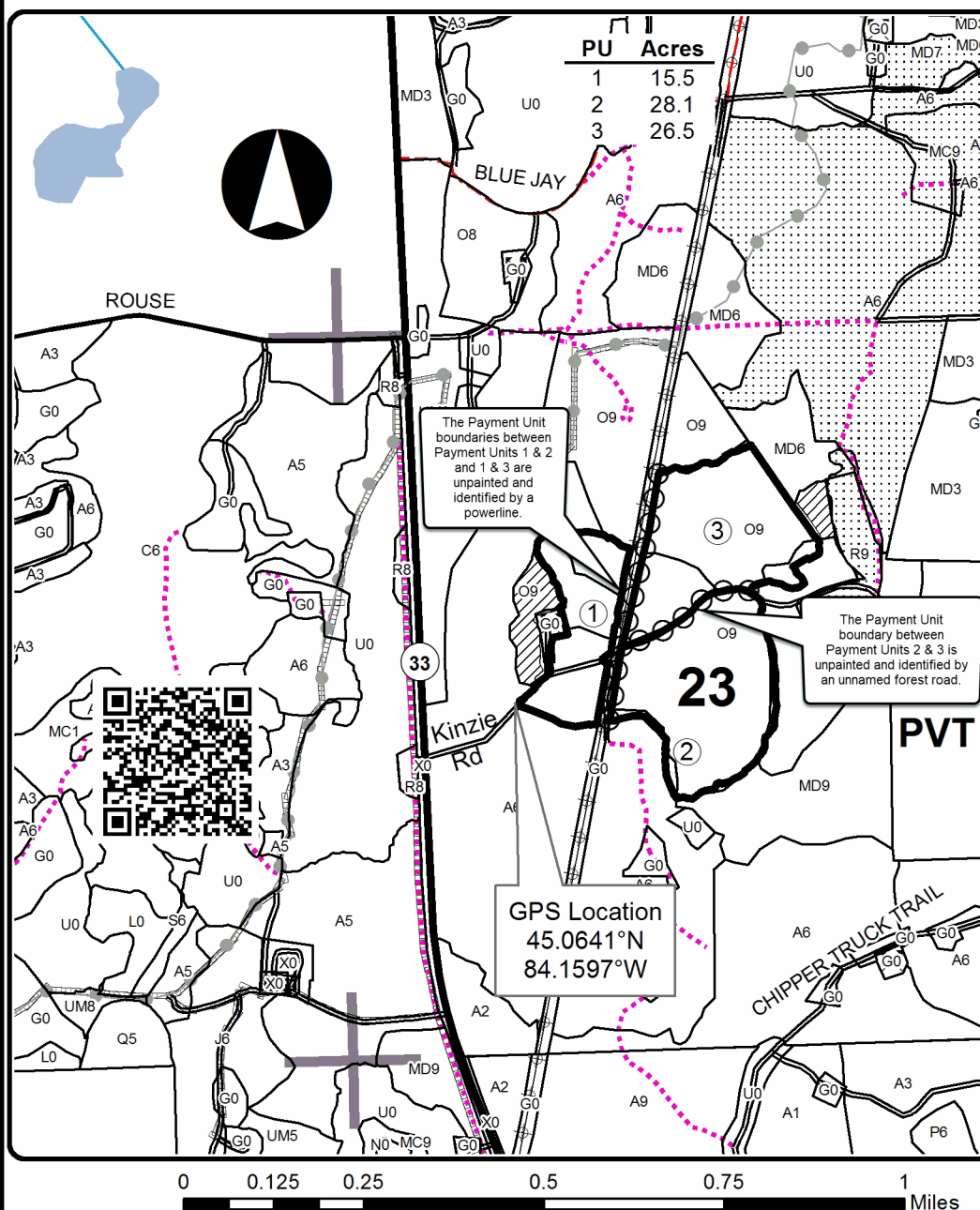
Township 31N	Range 02E	Section(s) and Subdivision(s) Sec 23 E1/2NW, W1/2NE, NWSE, N1/2SW	Scale 1:15,840
-----------------	--------------	--	-------------------

Cover Type

A = Aspen	H = Hemlock	N = Marsh	U = Upland Brush
B = Paper Birch	J = Jack Pine	O = Oak	UM = Upland Mixed
C = Cedar	L = Lowland Brush	P = Lowland Poplar	V = Bog or Marsh
D = Treed Bog	LM = Lowland Mixed	Q = Mixed Swamp Conifer	W = White Pine
E = Swamp Hdwoods	M = Mpl, Bch, Brch	R = Red Pine	X = Non Stocked
F = Spruce Fir	MC = Mixed Conifer	S = Black Spruce	Z = Water
G = Grass	MD = Mixed Deciduous	T = Tamarack	

Density

0 = Non Stocked	5 = Pole Timber Medium
1 = Seedling Sapling Poor	6 = Pole Timber Well
2 = Seedling Sapling Medium	7 = Saw Timber Poor
3 = Seedling Sapling Well	8 = Saw Timber Medium
4 = Pole Timber Poor	9 = Saw Timber Well

Kinzie Conversion Oak**Compartment 46****70.1 Acres****Legend**

- Against State (Red)
- Payment Unit (Yellow)
- Payment Unit
- Stand Boundaries
- ▨ Retention Area
- ▤ Nearby Timber Sales
- Pipeline
- ⊕ Powerline
- Recreational Trail
- Highways
- Secondary Forest Road
- Paved Road
- County Road - Seasonal
- Temporary Management Access
- Perennial River
- Lakes and Rivers
- Section Corners

Locator Map
1:150,000