



**DEPARTMENT OF NATURAL RESOURCES  
STATE OF MICHIGAN  
TIMBER SALE PROSPECTUS #7524**

SCHEDULED SALE DATE AND TIME: **2:00 p.m. (local time) on January 13, 2025.**

LOCATION: **GWINN MGMT UNIT, 410 WEST M 35, GWINN, MI 49841.**

CONTACT NAME: Mike Brodeur

PHONE NUMBER: (906) 346-9201

PROSPECTUS NOTE: The bidder is advised to inspect the sale area and review the location, estimated volumes, operating costs and contract terms of proposed sales. Please be aware that some landowners may request 60 days or more notice for access across their land.

Notice is hereby given that bids will be received by the Unit Manager, GWINN MANAGEMENT UNIT, for certain timber on the following described lands:

Mosquito Machine (32-003-24) / T44N, R26W, SEC. 1 , NWNW,S1/2NW,E1/2SW,N1/2SE,SWSE.

T44N, R26W, SEC. 10, NENW,NE.

T44N, R26W, SEC. 11, NW,N1/2NE,NWSW.

T44N, R26W, SEC. 2 , E1/2NW,NE,SW,SE.

T44N, R26W, SEC. 3 , SENW,SW.

Marquette County, Advertised Price \$67,224.25, 476.6 Acres, Hardwood, Spruce/Fir/Tamarack.

SALE NOTE: A recreation site such as a trail, pathway, or campground is within the sale area or the vicinity. Certain restrictions/specifications may be applicable including time restrictions. Access may be through private or other public land.

# TIMBER SALE INFORMATION

## Mosquito Machine (32-003-24)

T44N, R26W, SEC. 1; T44N, R26W, SEC. 10; T44N, R26W, SEC. 11; T44N, R26W, SEC. 2; T44N, R26W, SEC. 3.  
Marquette County (Advertised Price \$67,224.25)

SALE NOTE: A recreation site such as a trail, pathway, or campground is within the sale area or the vicinity. Certain restrictions/specifications may be applicable including time restrictions. Access may be through private or other public land.

A timber sale contract for this lump sum, sealed bid timber sale will be awarded to the responsible bidder offering the highest sealed bid price. All units of volume listed below were estimated using the Inventory Manager computer program and the new Michigan taper model. Bids must be at or above the following advertised price for each product and species:

<u>PRODUCTS &amp; SPECIES</u>	<u>ESTIMATED UNITS*</u>	<u>ADVERTISED PRICE</u>
<b>Sawtimber</b>		
Black Cherry	2.1 MBF	\$ 69.00 / MBF
Red Maple	115.5 MBF	\$ 80.00 / MBF
Sugar Maple	80.6 MBF	\$ 163.00 / MBF
Yellow Birch	3.5 MBF	\$ 20.00 / MBF
<b>Pulpwood</b>		
Balsam Fir	211 Cords	\$ 9.05 / Cord
Mixed Aspen	440 Cords	\$ 19.55 / Cord
Mixed Hardwood	2,854 Cords	\$ 9.35 / Cord
Mixed Spruce	700 Cords	\$ 9.20 / Cord
Red Pine	6 Cords	\$ 60.55 / Cord
Tamarack	52 Cords	\$ 12.15 / Cord

\* The total volume is statistically estimated within plus (+) or minus (-) 9.20 percent. There are an estimated 4,720 cords on this timber sale, plus or minus 435 cords at the 95% confidence level. The estimated units are final and not subject to adjustment. Prospective bidders are urged to examine this timber and to make their own estimates of quantity and quality.

### **BOND AND PAYMENT SCHEDULE:**

1. A bond in the amount of \$3,361.21 to insure faithful performance of the conditions of the contract will be deposited by the successful bidder within 21 days of the sale award.
2. Cutting in any sale or unit without the required advance payment would be considered a trespass.
3. Total payment must be paid in advance or according to the following schedule :
  - (a) Ten percent (10%) of the sale value must be paid within 21 days of the sale award.
  - (b) The 10% down payment will be credited towards the first unit cut.
  - (c) Payment for each of the following units must be made before cutting begins in that unit:

<u>PAYMENT UNIT NUMBER</u>	<u>PERCENT OF TOTAL SALE VALUE</u>
01	6.8%
02	8.1%
03	3.3%
04	9.5%
05	12.9%
06	2.5%
07	3.0%
08	3.3%
09	2.4%
10	1.8%
11	3.0%
12	3.1%
13	2.3%
14	3.8%
15	2.8%
16	17.7%
17	3.2%
18	2.4%
19	2.4%
20	3.2%
21	2.5%

4. If no cutting takes place, the 10% down payment will not be refunded.
5. Operations on the contract issued will terminate on 06/30/2028.

**SALE STATISTICS**

Volumes were calculated in cubic feet using the Michigan taper model. Cubic foot volume includes all wood inside bark for the product indicated. For display purposes, cubic feet were converted to cords and MBF using a simple conversion factor, e.g. 79 cubic feet per cord and 185 cubic feet per MBF. The cubic foot volumes are precise; the cords and MBF volumes are not. Cubic foot volume cannot be directly converted to cords or boards with precision.

**SALE VOLUMES**

The total estimated sale volume may not equal the sum of the species/products due to the nature of statistical calculations associated with double sampling methodology.

VOLUME			STATISTICAL RANGE IN CORDS	
TOTAL CUBIC FEET	TOTAL CORDS	PERCENT ERROR	MINIMUM	MAXIMUM
372,897	4,720	9.20%	4,286	5,155

**VDU VOLUMES**

A VDU is a Volume Determination Unit. Volumes and their associated statistics are calculated at the VDU level and summarized to the sale level. There is often a one to one relationship between a VDU and a Payment Unit, but not always, depending on the cruise design. Refer to the VDU TO PAYMENT UNIT table.

	VOLUME			RANGE IN CORDS	
VDU	TOTAL CUBIC FEET	TOTAL CORDS	PERCENT ERROR	MINIMUM	MAXIMUM
2	8,315	105	63.34%	39	172
5	15,258	193	35.43%	125	262
12	13,335	169	40.75%	100	238
19	74,697	946	26.17%	698	1,193
23	17,518	222	32.09%	151	293
24	13,583	172	56.65%	75	269
46	7,662	97	96.93%	3	191
50	50,368	638	22.30%	495	780
51	53,542	678	19.76%	544	812
52	118,620	1,502	16.46%	1,254	1,749
<b>TOTAL:</b>	<b>372,897</b>	<b>4,720</b>		<b>3,483</b>	<b>5,957</b>

**VDU TO PAYMENT UNIT**

When a VDU is associated with more than one Payment Unit (PU), the VDU volumes are assigned to the PU based on acres of the VDU within the PU.

VDU	VDU ACRES	PU	PU ACRES
2	7.9	19	7.9
5	13.7	20	13.7
12	12.8	21	12.8
19	52.5	16	52.5
23	36.7	17	36.7
24	9.5	18	9.5
46	4.1	15	4.1
50	107.4	9	20.6
50	107.4	10	15.4
50	107.4	11	25.6
50	107.4	12	26.1
50	107.4	13	19.7
51	91.4	6	18.3
51	91.4	7	21.6
51	91.4	8	23.8
51	91.4	14	27.7
52	140.6	1	23.7
52	140.6	2	27.9
52	140.6	3	11.4
52	140.6	4	32.9
52	140.6	5	44.7
<b>TOTAL:</b>	<b>1,742.8</b>		<b>476.6</b>

**DESCRIPTION OF TIMBER BY PU (PU)**

PU	MARKET GROUP	PRODUCT	QUANTITY	UNIT	ACRES	ADVERTISE PRICE
1	Red Maple	Sawtimber	7.2	MBF	23.7	\$4,599.85
	Sugar Maple		12.4	MBF		
	Yellow Birch		0.4	MBF		
	Balsam Fir	Pulpwood	7	Cords		
	Mixed Aspen		7	Cords		
	<i>B. T. Aspen</i>		1	<i>Cords</i>		
	<i>Quaking Aspen</i>		6	<i>Cords</i>		
	Mixed Hardwood		187	Cords		
	<i>Black Cherry</i>		2	<i>Cords</i>		
	<i>Red Maple</i>		97	<i>Cords</i>		
	<i>Sugar Maple</i>		87	<i>Cords</i>		
	<i>Yellow Birch</i>		1	<i>Cords</i>		
	Mixed Spruce		5	Cords		
	<i>White Spruce</i>		5	<i>Cords</i>		
	2	Red Maple	Sawtimber	8.5		
Sugar Maple			14.6	MBF		
Yellow Birch			0.5	MBF		
Balsam Fir		Pulpwood	9	Cords		
Mixed Aspen			8	Cords		
<i>B. T. Aspen</i>			1	<i>Cords</i>		
<i>Quaking Aspen</i>			7	<i>Cords</i>		
Mixed Hardwood			220	Cords		
<i>Black Cherry</i>			3	<i>Cords</i>		
<i>Red Maple</i>			114	<i>Cords</i>		
<i>Sugar Maple</i>			102	<i>Cords</i>		
<i>Yellow Birch</i>			1	<i>Cords</i>		
Mixed Spruce			6	Cords		
<i>White Spruce</i>			6	<i>Cords</i>		
3		Red Maple	Sawtimber	3.5	MBF	11.4
	Sugar Maple		6.0	MBF		
	Yellow Birch		0.2	MBF		
	Balsam Fir	Pulpwood	3	Cords		
	Mixed Aspen		4	Cords		
	<i>B. T. Aspen</i>		1	<i>Cords</i>		
	<i>Quaking Aspen</i>		3	<i>Cords</i>		
	Mixed Hardwood		91	Cords		
	<i>Black Cherry</i>		1	<i>Cords</i>		
	<i>Red Maple</i>		47	<i>Cords</i>		
	<i>Sugar Maple</i>		42	<i>Cords</i>		
	<i>Yellow Birch</i>		1	<i>Cords</i>		
	Mixed Spruce		2	Cords		
	<i>White Spruce</i>		2	<i>Cords</i>		
	4	Red Maple	Sawtimber	10.1	MBF	
Sugar Maple			17.3	MBF		
Yellow Birch			0.6	MBF		
Balsam Fir		Pulpwood	10	Cords		
Mixed Aspen			10	Cords		
<i>B. T. Aspen</i>			2	<i>Cords</i>		
<i>Quaking Aspen</i>			8	<i>Cords</i>		
Mixed Hardwood			259	Cords		
<i>Black Cherry</i>			3	<i>Cords</i>		
<i>Red Maple</i>			134	<i>Cords</i>		
<i>Sugar Maple</i>			120	<i>Cords</i>		
<i>Yellow Birch</i>			2	<i>Cords</i>		
Mixed Spruce			7	Cords		



**DESCRIPTION OF TIMBER BY PU (PU), CON'T**

PU	MARKET GROUP	PRODUCT	QUANTITY	UNIT	ACRES	ADVERTISE PRICE
9 con't	Mixed Hardwood	Pulpwood	81	Cords		
	<i>Red Maple</i>		70	<i>Cords</i>		
	<i>Sugar Maple</i>		11	<i>Cords</i>		
	Mixed Spruce		9	Cords		
	<i>Black Spruce</i>		1	<i>Cords</i>		
	<i>White Spruce</i>		8	<i>Cords</i>		
10	Red Maple	Sawtimber	5.0	MBF	15.4	\$1,215.80
	Sugar Maple		0.5	MBF		
	Balsam Fir	Pulpwood	11	Cords		
	Mixed Hardwood		61	Cords		
	<i>Red Maple</i>		53	<i>Cords</i>		
	<i>Sugar Maple</i>		8	<i>Cords</i>		
	Mixed Spruce		7	Cords		
	<i>Black Spruce</i>		1	<i>Cords</i>		
	<i>White Spruce</i>		6	<i>Cords</i>		
	11		Red Maple	Sawtimber		
Sugar Maple			0.8	MBF		
Balsam Fir		Pulpwood	18	Cords		
Mixed Hardwood			101	Cords		
<i>Red Maple</i>			87	<i>Cords</i>		
<i>Sugar Maple</i>			14	<i>Cords</i>		
Mixed Spruce			12	Cords		
<i>Black Spruce</i>			2	<i>Cords</i>		
<i>White Spruce</i>			10	<i>Cords</i>		
12			Red Maple	Sawtimber	8.5	MBF
	Sugar Maple		0.9	MBF		
	Balsam Fir	Pulpwood	18	Cords		
	Mixed Hardwood		103	Cords		
	<i>Red Maple</i>		89	<i>Cords</i>		
	<i>Sugar Maple</i>		14	<i>Cords</i>		
	Mixed Spruce		12	Cords		
	<i>Black Spruce</i>		2	<i>Cords</i>		
	<i>White Spruce</i>		10	<i>Cords</i>		
	13		Red Maple	Sawtimber	6.4	MBF
Sugar Maple			0.6	MBF		
Balsam Fir		Pulpwood	14	Cords		
Mixed Hardwood			78	Cords		
<i>Red Maple</i>			67	<i>Cords</i>		
<i>Sugar Maple</i>			11	<i>Cords</i>		
Mixed Spruce			9	Cords		
<i>Black Spruce</i>			1	<i>Cords</i>		
<i>White Spruce</i>			8	<i>Cords</i>		
14			Black Cherry	Sawtimber	0.7	MBF
	Red Maple		8.2	MBF		
	Sugar Maple		1.0	MBF		
	Yellow Birch		0.3	MBF		
	Balsam Fir	Pulpwood	15	Cords		
	Mixed Hardwood		155	Cords		
	<i>Black Cherry</i>		5	<i>Cords</i>		
	<i>Red Maple</i>		118	<i>Cords</i>		
	<i>Sugar Maple</i>		31	<i>Cords</i>		
	<i>Yellow Birch</i>		1	<i>Cords</i>		
	Mixed Spruce		12	Cords		
	<i>Black Spruce</i>		5	<i>Cords</i>		
	<i>White Spruce</i>		7	<i>Cords</i>		

**DESCRIPTION OF TIMBER BY PU (PU), CON'T**

PU	MARKET GROUP	PRODUCT	QUANTITY	UNIT	ACRES	ADVERTISE PRICE
15	Mixed Aspen	Pulpwood	64	Cords	4.1	\$1,857.45
	<i>B. T. Aspen</i>		26	<i>Cords</i>		
	<i>Quaking Aspen</i>		38	<i>Cords</i>		
	Mixed Hardwood		25	Cords		
	<i>Red Maple</i>		25	<i>Cords</i>		
	Mixed Spruce		1	Cords		
	<i>Black Spruce</i>		1	<i>Cords</i>		
	Red Pine		6	Cords		
16	Red Maple	Sawtimber	6.3	MBF	52.5	\$11,905.95
	Balsam Fir	Pulpwood	43	Cords		
	Mixed Aspen		269	Cords		
	<i>Quaking Aspen</i>		269	<i>Cords</i>		
	Mixed Hardwood		455	Cords		
	<i>Black Cherry</i>		16	<i>Cords</i>		
	<i>Paper Birch</i>		21	<i>Cords</i>		
	<i>Red Maple</i>		391	<i>Cords</i>		
	<i>Sugar Maple</i>		27	<i>Cords</i>		
	Mixed Spruce		163	Cords		
	<i>White Spruce</i>		163	<i>Cords</i>		
	17		Mixed Hardwood	Pulpwood		
<i>Yellow Birch</i>		4	<i>Cords</i>			
Mixed Spruce		179	Cords			
<i>Black Spruce</i>		179	<i>Cords</i>			
Tamarack		38	Cords			
18	Mixed Hardwood	Pulpwood	115	Cords	9.5	\$1,599.65
	<i>Red Maple</i>		115	<i>Cords</i>		
	Mixed Spruce		57	Cords		
	<i>Black Spruce</i>	57	<i>Cords</i>			
19	Mixed Aspen	Pulpwood	41	Cords	7.9	\$1,591.20
	<i>Quaking Aspen</i>		41	<i>Cords</i>		
	Mixed Hardwood		21	Cords		
	<i>Paper Birch</i>		7	<i>Cords</i>		
	<i>Red Maple</i>		14	<i>Cords</i>		
	Mixed Spruce		46	Cords		
	<i>Black Spruce</i>		46	<i>Cords</i>		
Tamarack	14	Cords				
20	Red Maple	Sawtimber	4.0	MBF	13.7	\$2,140.00
	Mixed Aspen	Pulpwood	10	Cords		
	<i>Quaking Aspen</i>		10	<i>Cords</i>		
	Mixed Hardwood		158	Cords		
	<i>Paper Birch</i>		9	<i>Cords</i>		
	<i>Red Maple</i>		149	<i>Cords</i>		
	Mixed Spruce		16	Cords		
	<i>White Spruce</i>		16	<i>Cords</i>		
21	Mixed Aspen	Pulpwood	14	Cords	12.8	\$1,695.45
	<i>Quaking Aspen</i>		14	<i>Cords</i>		
	Mixed Hardwood		33	Cords		
	<i>Paper Birch</i>		15	<i>Cords</i>		
	<i>Red Maple</i>		18	<i>Cords</i>		
	Mixed Spruce		121	Cords		
	<i>Black Spruce</i>	121	<i>Cords</i>			
TOTAL:			201.7	MBF		
TOTAL:			4,263	Cords		



## Sale Specific Conditions & Requirements

Sale Name: Mosquito Machine

Sale Number: 32-003-24 Seq#: 1

### 1 - Sale Area

#### 1.2 - Boundaries

##### 1.2.1 - Painted boundaries (9/19)

The sale boundary and Payment Unit boundaries are marked and identified by blue, red and yellow paint. Exterior sale boundary lines against private property are marked with blue paint. Exterior sale boundary lines against state are marked with red paint. Interior Payment Unit boundaries are marked with yellow paint. Retention patches are marked with red paint; no harvesting activities may occur within these areas. The painted boundary line trees are not Included Timber and are to be protected unless marked with orange paint. Yellow painted trees designating an interior Payment Unit boundary are only to be cut when all surrounding Payment Units have been paid.

### 2 - Timber Specifications

#### 2.1 - Included Timber

##### 2.1.1 - Clearcut unit(s) with unmerchantable trees (6/14)

Within Payment Unit(s) 15-17 and 19-21, cut all trees that are two (2) inches or more at DBH except:

Within Unit(s) 15-17, 19, and 21, do not cut cedar, hemlock, and white pine.

Within Unit(s) 20, do not cut cedar, hemlock, white pine, and yellow birch.

##### 2.1.3 - Cut tree marked unit(s) (12/08)

Within Payment Unit(s) 1-14, all trees are designated for cutting when marked with orange paint above and below stump height, regardless of merchantability. Within Payment Unit(s) 1 and 2, cut all white and black spruce, balsam fir and aspen, which meets minimum piece specifications in 2.2 utilization. Within Payment Unit(s) 3-14, cut all white spruce, black spruce, and balsam fir and aspen, which meets minimum piece specifications in 2.2 utilization.

##### 2.1.7 - Leave tree marked unit(s) (6/14)

Within Payment Unit(s) 18, cut all trees that are two (2) inches or more at DBH except leave all cedar, hemlock, white pine, yellow birch, and trees marked with green paint above and below stump height.

### 3 - Payments

#### 3.4 - Damaged Timber

##### 3.4.1 - Damaged timber (7/16)

General Condition and Requirement 3.4 Damaged Timber, defines liquidated damages for undesignated live merchantable trees which are cut or injured. In addition, extreme care should be taken to avoid damage to tree seedlings and saplings.

No damage is acceptable to undesignated live merchantable trees. Within the sale area, if more than 5% of trees (> 4.5" DBH) within a specified area of the sale are damaged, liquidated damages will be assessed for all trees damaged. Rates will be in accordance with General Condition and Requirement 3.4 Damaged Timber.

### 4 - Transportation

#### 4.1 - Construction

##### 4.1.3 - Slash and earthen piles (8/04)

Piles or windrows of earth along roads and landings that have been widened or constructed shall be leveled. Slash from road maintenance or construction, including stumps, shall be dispersed throughout the sale.

##### 4.1.4 - Timber removed for construction (3/23)

Trees cut or damaged in the process of pre-approved road, landing or skid trail construction will be decked in an area separate from other Designated Timber and not removed until measured by the sale administrator. Payment will be made at contract

prices or average prices, if not on the contract.

#### 4.1.6 - Road construction (4/24)

Construction of new roads or improvements of existing roads shall be done in such a way as to minimize the environmental and visual impacts. Merchantable trees shall be cut and utilized unless otherwise directed. Non-merchantable trees shall be severed and laid flat on the ground. Slash shall be scattered, and not left in windrows and kept a minimum of 10 feet back from the road edge. Stumps shall be set upright, not left on edge, and be moved at least 10 feet away from the road edge. Disturbed soil shall be feathered into the woods and not left in berms or windrows.

#### 4.1.7 - Road closure (10/11)

All new roads built into the sale must be blocked to vehicle traffic within 60 days of completion of hauling. In general, this will require constructing a four (4') foot high berm of stumps and logs covered with earth. Overgrown roads that are reopened shall be considered new roads. Temporary berms may be required if no sale activity occurs for 60 or more consecutive days. Contact the Sale Administrator for specific details of design and placement.

#### 4.1.8 - Road work (1) (8/07)

The following road work is required: The Purchaser is responsible for hauling and spreading approximately 100 yards of 3" minus rock on Miller Creek Road. Contact the Sale Administrator for the location(s) of where this material is to be placed.

### 4.4 - Access

#### 4.4.1 - Private property access (3/11)

Permission for access across private land is the responsibility of the Purchaser. Should the Purchaser desire to cross private land, a copy of the written permission from the private land-owner may be required by the DNR.

## 5 - Operations

### 5.1 - Notification

#### 5.1.1 - Pre-sale conference (10/16)

A pre-sale conference between the Purchaser and sale administrator is required prior to beginning any operations. The Unit Manager or his/her representative must be contacted at least 3 days in advance to schedule the conference.

### 5.2 - Conduct of Operations

#### 5.2.1 - Slash

##### 5.2.1.11 - Slash for reforestation (3/21)

To facilitate reforestation, the Sale Area shall be left with slash evenly distributed. Bunched tops within the cutting area shall be broken up and scattered. Stumps shall be cut low to the ground. Processing sites shall not be left with a compacted layer of slash; tops from these sites shall be hauled back into the cut area and scattered.

#### 5.2.3 - Operating Restrictions

##### 5.2.3.2 - Operating restrictions (9/11)

Within Payment Unit(s) 17,18, 19, and 21, unless changed by written agreement, cutting, skidding, and hauling are limited to frozen conditions, generally the period of 12/1 to 4/1. This restriction is due to wet soils.

##### 5.2.3.3 - Bark slippage restriction (3/09)

Within Payment Unit(s) 1-14, unless changed by written agreement, cutting and skidding are not permitted during the period of April 15 to July 15. This restriction is because of bark slippage.

#### 5.2.32 - Decking/landing restoration (9/13)

All decking and landing areas must have the surface area restored to a condition equal to or better than before. This is to ensure the proper regeneration of the stand. Wood debris, chips and "cookies" from trimmings must be removed or scattered away from landing and loading areas and may not be windrowed on the edge.

#### 5.2.37 - No decking areas (12/08)

No decking is allowed within 50 feet of Miller Creek Road and Perrin Brothers Trail.

#### 5.2.38 - No decking against live trees (2/04)

Cut products may not be decked against unmarked or designated leave trees.

#### 5.2.39 - ORV trail/route protection (4/18)

The Perrin Brothers Trail is an ORV trail or route and is shown on the Timber Sale Map. Do not cut trees or damage posts with yellow ORV markers. Trees with yellow ORV markers shall be cut off above the markers and at least 5 feet above ground. All stumps within 5 feet of the trail must be cut flush with the ground. Maintain a 20-foot-wide slash, debris, and rut free zone daily using the ORV trail or route as the centerline. Do not run equipment down the ORV trail or route. Skidding across the trail or route may only occur in locations approved by the Sale Administrator.

#### 5.2.41 - Snowmobile trail protection (9/11)

Trails 32 and 33 are snowmobile trails and are shown on the Timber Sale Map. Do not cut or damage posts with orange trail markers or traffic control signs. If the trails are used, they must be maintained and restored to a condition equal to or better than before the sale. The road maintenance/restoration must be done prior to December 1. If the trails are used for hauling, they must be graded to the satisfaction of the Unit Manager or his/her representative prior to December 1st. If the trail road is to be used for hauling during the snowmobile season, then a snow-covered base must be left on the trail. The hauling of forest products on the snowmobile trail are limited to Monday through Friday daylight hours during the snowmobile season. Maintain a 20-foot-wide slash, debris, and rut free zone daily using the snowmobile trail as the centerline. No decking of forest products will be permitted along the snowmobile trail. All stumps within 20 feet of the snowmobile trail must be cut at ground level.

### 5.4 - Soil Protection

#### 5.4.1 - Rutting restriction, general (7/16)

Operations are to cease immediately if equipment and weather conditions result in rutting of roads and/or skid trails which is 12 inches or greater in depth and 50 feet in length. The Unit Manager or his/her representative may restrict hauling and/or skidding if ruts exceed the specified depth. With the Unit Manager or his/her representative's approval, the Purchaser may return to the area when the risk of rutting has decreased.

#### 5.4.2 - Skid trails (2/04)

Skid trails up and down slopes should be avoided. If however this is unavoidable, these trails will be left in a non-erodible condition using water bars, logs, and slash. Placing of slash on these skid trails while logging is ongoing may alleviate need for any further action. At the direction of the sale administrator, seed, fertilizer, and mulch may also be required.

### 5.7 - Protection of Historical Sites

#### 5.7.1 - Historical sites (7/12)

The Purchaser shall not cut live or dead trees or operate equipment within historical sites. Historical sites are marked on the map. The Purchaser shall protect historical sites from damage by the Purchaser's operations. If Purchaser's operations have cut or damaged historical sites through carelessness, the Purchaser shall pay \$10,000 as fixed, agreed and liquidated damages for each acre or part thereof cut or damaged.

## 6 - Safety and Fire Prevention

### 6.2 - Signing

#### 6.2.1 - Road posting (10/20)

The Purchaser is responsible for posting and maintaining caution signs on Perrin Brothers Trail and Miller Creek Road prior to beginning operations. The road must be posted at appropriate distances from the sale area to warn of logging activity and truck traffic. Signs must be removed when harvest operations are suspended or completed. The Purchaser will provide these signs.

#### 6.2.2 - Snowmobile trail posting (10/20)

The Purchaser is responsible for posting and maintaining caution signs on Trails 32 and 33 prior to beginning operations during the snowmobile season (approximately December 1 to March 31). The trail must be posted at appropriate distances from the sale area to warn of logging activity and truck traffic. Signs must be removed when harvest operations are suspended or completed. The Purchaser will provide these signs.

#### 6.2.3 - Recreational trail posting (10/20)

The Purchaser is responsible for posting and maintaining caution signs on the ski trail along the south end of Payment Unit 2 prior to beginning operations. The trail must be posted at appropriate distances from the sale area to warn of logging activity

and truck traffic at both ends of the trail. Signs must be removed when harvest operations are suspended or completed. The Purchaser will provide these signs.



### TIMBER SALE MAP

This information provided by authority of Part 525, 1994 PA 451, as amended.

Sale Number  
**32-003-24**

Date  
**11/13/2024**

Forest Management Unit	County	Mapped By: Siler
Gwynn Mgt Unit	Marquette	Cruised By: VanOss, Gould, Siler

Scale	Page	Of
1:15,840	1	2

Township	Range	Section(s) and Subdivision(s)
44N	26W	E1/2NW,NE,SW,SE; Sec. 3 SENW,SW; Sec. 1 NWNW,S1/2NW,E1/2SW,N1/2SE,SWSE; Sec. 10 NENW,NE; Sec. 11 NW,N1/2NE,NWSW; Sec. 2

#### Cover Type

A = Aspen	J = Jack Pine	O = Oak	U = Upland Brush
B = Paper Birch	K = Rock	P = Lowland Poplar	UM = Upland Mix Forest
C = Cedar	L = Lowland Brush	Q = Mixed Swamp Conifer	V = Bog or Marsh
D = Treed Bog	LM = Lowland Mix Forest	R = Red Pine	W = White Pine
E = Swamp Hardwoods	M = Maple, Beech, Birch	S = Black Spruce	X = Non Stocked
F = Spruce/Fir	MC = Mixed Conifer	T = Tamarack	Y = Sand
G = Grass	MD = Mixed Deciduous		Z = Water
H = Hemlock	N = Marsh		

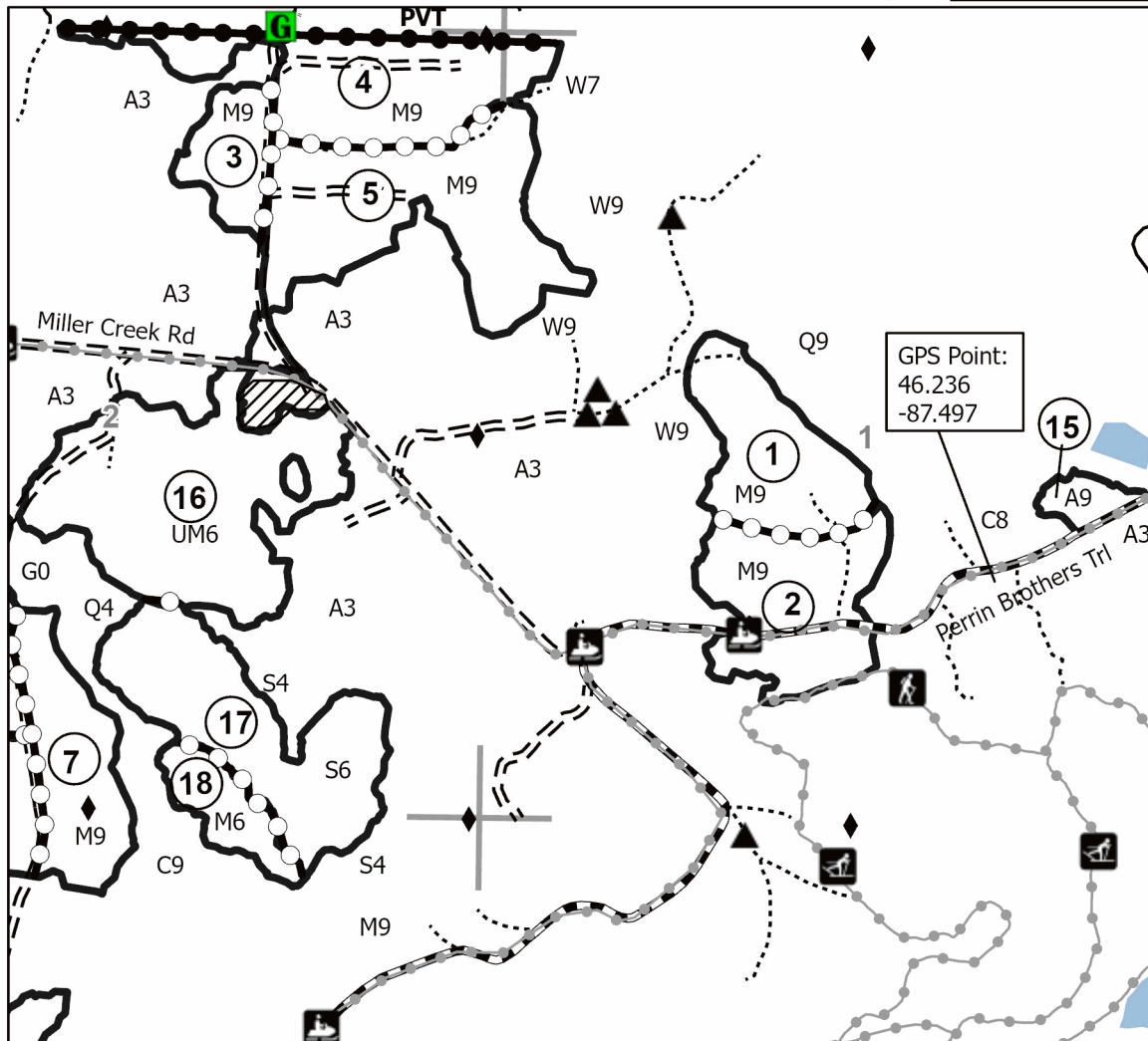
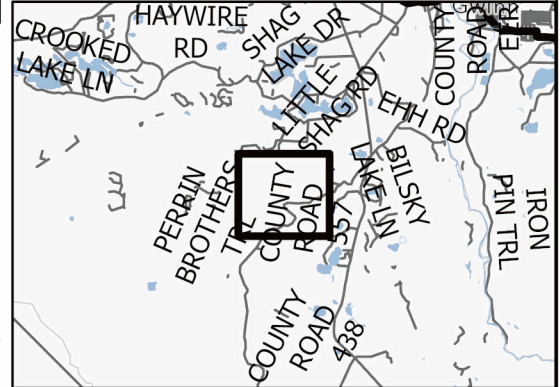
#### Density

0 = Non Stocked	5 = Pole Timber Medium
1 = Seedling Sapling Poor	6 = Pole Timber Well
2 = Seedling Sapling Medium	7 = Saw Timber Poor
3 = Seedling Sapling Well	8 = Saw Timber Medium
4 = Pole Timber Poor	9 = Saw Timber Well

PU #	Acres	PU #	Acres	PU #	Acres	PU #	Acres
1	23.7	7	21.6	13	19.7	19	7.9
2	27.9	8	23.8	14	27.7	20	13.7
3	11.4	9	20.6	15	4.1	21	12.8
4	32.9	10	15.4	16	52.5		
5	44.7	11	25.6	17	36.7		
6	18.3	12	26.1	18	9.5		

*Mosquito Machine*  
476.6 Acres

#### Locator Map (1:200,000)



#### Legend

- Against State (Red)
- Payment Unit (Yellow)
- Private Line (Blue)
- Recreational Trail
- Lakes and Rivers
- Primary Forest Road
- Forest Access Route
- Administrative Access Only
- Paved Road
- Government Gravel/Dirt
- Private Gravel/Dirt
- Payment Unit
- Special Protection Area
- Survey Grade Corner
- Berm
- Gate
- Section Corner

Use QR Code to open Map in App





### TIMBER SALE MAP

This information provided by authority of Part 525, 1994 PA 451, as amended.

Sale Number  
**32-003-24**

Date  
**10/15/2024**

Forest Management Unit	County	Mapped By: Siler
Gwynn Mgt Unit	Marquette	Cruised By: VanOss, Gould, Siler

Scale	Page	Of
1:15,840	2	2

Township	Range	Section(s) and Subdivision(s)
44N	26W	E1/2NW,NE,SW,SE; Sec. 3 SENW,SW; Sec. 1 NWNW,S1/2NW,E1/2SW,N1/2SE,SWSE; Sec. 10 NENW,NE; Sec. 11 NW,N1/2NE,NWSW; Sec. 2

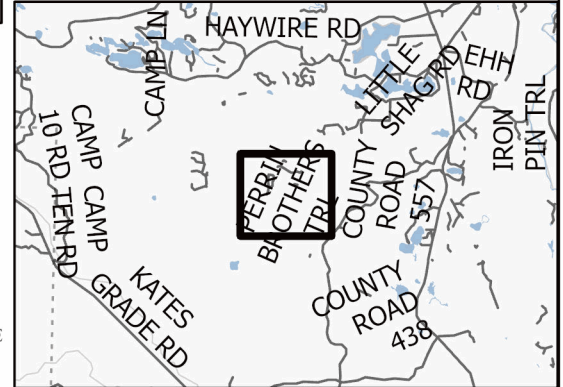
#### Cover Type

A = Aspen	J = Jack Pine	O = Oak	U = Upland Brush
B = Paper Birch	K = Rock	P = Lowland Poplar	UM = Upland Mix Forest
C = Cedar	L = Lowland Brush	Q = Mixed Swamp Conifer	V = Bog or Marsh
D = Tread Bog	LM = Lowland Mix Forest	R = Red Pine	W = White Pine
E = Swamp Hardwoods	M = Maple, Beech, Birch	S = Black Spruce	X = Non Stocked
F = Spruce/Fir	MC = Mixed Conifer	T = Tamarack	Y = Sand
G = Grass	MD = Mixed Deciduous		Z = Water
H = Hemlock	N = Marsh		

#### Density

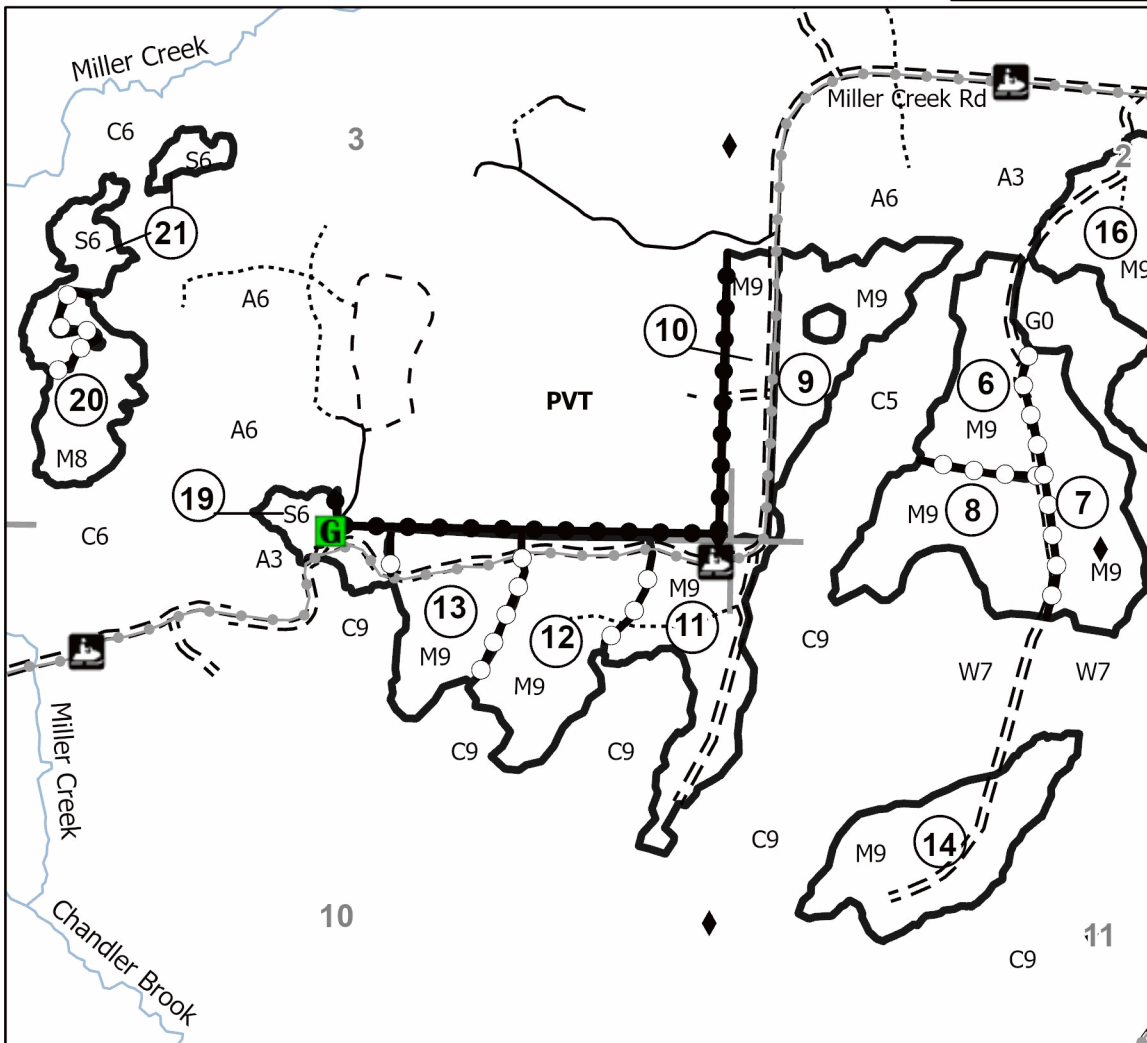
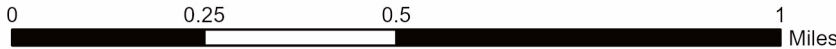
0 = Non Stocked	5 = Pole Timber Medium
1 = Seedling Sapling Poor	6 = Pole Timber Well
2 = Seedling Sapling Medium	7 = Saw Timber Poor
3 = Seedling Sapling Well	8 = Saw Timber Medium
4 = Pole Timber Poor	9 = Saw Timber Well

#### Locator Map (1:200,000)



PU #	Acres	PU #	Acres	PU #	Acres	PU #	Acres
1	23.7	7	21.6	13	19.7	19	7.9
2	27.9	8	23.8	14	27.7	20	13.7
3	11.4	9	20.6	15	4.1	21	12.8
4	32.9	10	15.4	16	52.5		
5	44.7	11	25.6	17	36.7		
6	18.3	12	26.1	18	9.5		

Mosquito Machine  
476.6 Acres



#### Legend

- Against State (Red)
- Payment Unit (Yellow)
- Private Line (Blue)
- Recreational Trail
- Lakes and Rivers
- Perennial River
- Primary Forest Road
- Forest Access Route
- Administrative Access Only
- Paved Road
- Government Gravel/Dirt
- Private Gravel/Dirt
- Payment Unit
- Special Protection Area
- Survey Grade Corner
- Gate
- Section Corner

Use QR Code to open Map in App

