



**DEPARTMENT OF NATURAL RESOURCES
STATE OF MICHIGAN
TIMBER SALE PROSPECTUS #7525**

SCHEDULED SALE DATE AND TIME: **2:00 p.m. (local time) on February 10, 2025.**

LOCATION: **GWINN MGMT UNIT, 410 WEST M 35, GWINN, MI 49841.**

CONTACT NAME: Mike Brodeur

PHONE NUMBER: (906) 346-9201

PROSPECTUS NOTE: The bidder is advised to inspect the sale area and review the location, estimated volumes, operating costs and contract terms of proposed sales. Please be aware that some landowners may request 60 days or more notice for access across their land.

Notice is hereby given that bids will be received by the Unit Manager, GWINN MANAGEMENT UNIT, for certain timber on the following described lands:

Marvelous McFarland Mix (32-007-24) / T43N, R24W, SEC. 16, S1/2NW,N1/2NE,SWNE,N1/2SW,SESW.

T43N, R24W, SEC. 17, SENE,NWSE.

T43N, R24W, SEC. 18, NE,SE.

T43N, R24W, SEC. 19, N1/2NE.

T43N, R24W, SEC. 7 , SESE.

T43N, R24W, SEC. 9 , SESE.

Marquette County, Advertised Price \$105,798.75, 285.8 Acres, Hardwood, Red Pine.

SALE NOTE: Additional road work is required on this sale.

Access may be through private land.

TIMBER SALE INFORMATION

Marvelous McFarland Mix (32-007-24)

T43N, R24W, SEC. 16; T43N, R24W, SEC. 17; T43N, R24W, SEC. 18; T43N, R24W, SEC. 19; T43N, R24W, SEC. 7; T43N, R24W, SEC. 9.

SALE NOTE: Additional road work is required on this sale.

Access may be through private land.

A timber sale contract for this lump sum, sealed bid timber sale will be awarded to the responsible bidder offering the highest sealed bid price. All units of volume listed below were estimated using the Inventory Manager computer program and the new Michigan taper model. Bids must be at or above the following advertised price for each product and species:

<u>PRODUCTS & SPECIES</u>	<u>ESTIMATED UNITS*</u>	<u>ADVERTISED PRICE</u>
Sawtimber		
Basswood	27.3 MBF	\$ 34.00 / MBF
Red Maple	26.5 MBF	\$ 86.00 / MBF
Sugar Maple	39.4 MBF	\$ 171.00 / MBF
Yellow Birch	2.9 MBF	\$ 21.00 / MBF
Pulpwood		
Balsam Fir	662 Cords	\$ 8.50 / Cord
Mixed Hardwood	1,558 Cords	\$ 9.35 / Cord
Mixed Spruce	212 Cords	\$ 8.95 / Cord
Quaking Aspen	241 Cords	\$ 19.45 / Cord
Red Pine	1,077 Cords	\$ 63.20 / Cord
Tamarack	78 Cords	\$ 12.15 / Cord

* The total volume is statistically estimated within plus (+) or minus (-) 8.98 percent. There are an estimated 4,049 cords on this timber sale, plus or minus 364 cords at the 95% confidence level. The estimated units are final and not subject to adjustment. Prospective bidders are urged to examine this timber and to make their own estimates of quantity and quality.

BOND AND PAYMENT SCHEDULE:

1. A bond in the amount of \$10,579.88 to insure faithful performance of the conditions of the contract will be deposited by the successful bidder within 21 days of the sale award.
2. Cutting in any sale or unit without the required advance payment would be considered a trespass.
3. Total payment must be paid in advance or according to the following schedule :
 - (a) Ten percent (10%) of the sale value must be paid within 21 days of the sale award.
 - (b) The 10% down payment will be credited towards the first unit cut.
 - (c) Payment for each of the following units must be made before cutting begins in that unit:

PAYMENT UNIT NUMBER	PERCENT OF TOTAL SALE VALUE
01	6.1%
02	5.3%
03	3.3%
04	1.5%
05	0.5%
06	10.5%
07	21.8%
08	33.9%
09	1.1%
10	5.0%
11	5.4%
12	1.6%
13	2.0%
14	2.0%

4. If no cutting takes place, the 10% down payment will not be refunded.
5. Operations on the contract issued will terminate on 06/30/2028.

SALE STATISTICS

Volumes were calculated in cubic feet using the Michigan taper model. Cubic foot volume includes all wood inside bark for the product indicated. For display purposes, cubic feet were converted to cords and MBF using a simple conversion factor, e.g. 79 cubic feet per cord and 185 cubic feet per MBF. The cubic foot volumes are precise; the cords and MBF volumes are not. Cubic foot volume cannot be directly converted to cords or boards with precision.

SALE VOLUMES

The total estimated sale volume may not equal the sum of the species/products due to the nature of statistical calculations associated with double sampling methodology.

VOLUME			STATISTICAL RANGE IN CORDS	
TOTAL CUBIC FEET	TOTAL CORDS	PERCENT ERROR	MINIMUM	MAXIMUM
319,858	4,049	8.98%	3,685	4,412

VDU VOLUMES

A VDU is a Volume Determination Unit. Volumes and their associated statistics are calculated at the VDU level and summarized to the sale level. There is often a one to one relationship between a VDU and a Payment Unit, but not always, depending on the cruise design. Refer to the VDU TO PAYMENT UNIT table.

VDU	VOLUME		PERCENT ERROR	RANGE IN CORDS	
	TOTAL CUBIC FEET	TOTAL CORDS		MINIMUM	MAXIMUM
1	39,991	506	34.03%	334	678
2	45,376	574	26.33%	423	726
5	28,571	362	31.77%	247	477
8	3,586	45	98.37%	1	90
11	26,603	337	33.64%	223	450
13	78,019	988	16.66%	823	1,152
15	8,573	109	57.27%	46	171
18	42,462	537	20.76%	426	649
20	9,993	126	35.54%	82	171
22	15,587	197	28.99%	140	254
30	9,166	116	50.31%	58	174
121	11,929	151	48.25%	78	224
TOTAL:	319,858	4,049		2,881	5,217

VDU TO PAYMENT UNIT

When a VDU is associated with more than one Payment Unit (PU), the VDU volumes are assigned to the PU based on acres of the VDU within the PU.

VDU	VDU ACRES	PU	PU ACRES
1	26.2	2	26.2
2	27.6	1	27.6
5	17.6	3	17.6
8	7.2	5	7.2
11	48.2	6	48.2
13	44.7	7	17.4
13	44.7	8	27.3
15	9.7	9	9.7
18	44.5	10	21.5
18	44.5	11	23.0
20	15.6	12	15.6
22	18.2	13	18.2
30	8.9	14	8.9
121	17.4	4	17.4
TOTAL:	375.0		285.8

DESCRIPTION OF TIMBER BY PU (PU)

PU	MARKET GROUP	PRODUCT	QUANTITY	UNIT	ACRES	ADVERTISE PRICE
1	Red Maple	Sawtimber	12.4	MBF	27.6	\$6,465.70
	Yellow Birch		2.9	MBF		
	Balsam Fir	Pulpwood	30	Cords		
	Mixed Hardwood		397	Cords		
	<i>Basswood</i>		17	<i>Cords</i>		
	<i>Black Cherry</i>		10	<i>Cords</i>		
	<i>Red Maple</i>		282	<i>Cords</i>		
	<i>Yellow Birch</i>		88	<i>Cords</i>		
	Mixed Spruce		75	Cords		
	<i>Black Spruce</i>		75	<i>Cords</i>		
	Quaking Aspen		36	Cords		
2	Basswood	Sawtimber	11.0	MBF	26.2	\$5,584.95
	Sugar Maple		2.7	MBF		
	Balsam Fir	Pulpwood	175	Cords		
	Mixed Hardwood		246	Cords		
	<i>Basswood</i>		101	<i>Cords</i>		
	<i>Black Cherry</i>		14	<i>Cords</i>		
	<i>Ironwood</i>		4	<i>Cords</i>		
	<i>Sugar Maple</i>		127	<i>Cords</i>		
	Mixed Spruce		14	Cords		
	<i>White Spruce</i>		14	<i>Cords</i>		
	Quaking Aspen		43	Cords		
3	Basswood	Sawtimber	0.8	MBF	17.6	\$3,452.05
	Red Maple		0.4	MBF		
	Balsam Fir	Pulpwood	196	Cords		
	Mixed Hardwood		79	Cords		
	<i>Basswood</i>		14	<i>Cords</i>		
	<i>Black Cherry</i>		19	<i>Cords</i>		
	<i>Ironwood</i>		4	<i>Cords</i>		
	<i>Red Maple</i>		25	<i>Cords</i>		
	<i>Sugar Maple</i>		17	<i>Cords</i>		
	Mixed Spruce		20	Cords		
	<i>Black Spruce</i>		20	<i>Cords</i>		
	Quaking Aspen		4	Cords		
	Tamarack		60	Cords		
4	Basswood	Sawtimber	1.8	MBF	17.4	\$1,572.10
	Balsam Fir	Pulpwood	39	Cords		
	Mixed Hardwood		73	Cords		
	<i>Basswood</i>		24	<i>Cords</i>		
	<i>Black Cherry</i>		2	<i>Cords</i>		
	<i>Ironwood</i>		3	<i>Cords</i>		
	<i>Sugar Maple</i>		44	<i>Cords</i>		
	Mixed Spruce		5	Cords		
	<i>White Spruce</i>		5	<i>Cords</i>		
	Quaking Aspen		12	Cords		
	Tamarack		18	Cords		
5	Sugar Maple	Sawtimber	0.4	MBF	7.2	\$493.10
	Balsam Fir	Pulpwood	20	Cords		
	Mixed Hardwood		21	Cords		
	<i>Sugar Maple</i>		21	<i>Cords</i>		
	Quaking Aspen		3	Cords		
6	Balsam Fir	Pulpwood	94	Cords	48.2	\$11,091.80
	Mixed Hardwood		8	Cords		
	<i>Black Cherry</i>		8	<i>Cords</i>		
	Mixed Spruce		83	Cords		

DESCRIPTION OF TIMBER BY PU (PU), CON'T

PU	MARKET GROUP	PRODUCT	QUANTITY	UNIT	ACRES	ADVERTISE PRICE
6 con't	<i>Norway Spruce</i>	<i>Pulpwood</i>	66	<i>Cords</i>		
	<i>White Spruce</i>		17	<i>Cords</i>		
	Quaking Aspen		3	Cords		
	Red Pine		149	Cords		
7	Balsam Fir	Pulpwood	22	Cords	17.4	\$23,011.55
	Mixed Hardwood		1	Cords		
	<i>Black Cherry</i>		1	<i>Cords</i>		
	Red Pine		361	Cords		
8	Balsam Fir	Pulpwood	34	Cords	27.3	\$36,141.70
	Mixed Hardwood		1	Cords		
	<i>Black Cherry</i>		1	<i>Cords</i>		
	Mixed Spruce		1	Cords		
	<i>White Spruce</i>		1	<i>Cords</i>		
	Red Pine		567	Cords		
9	Red Maple	Sawtimber	2.2	MBF	9.7	\$1,186.05
	Balsam Fir	Pulpwood	4	Cords		
	Mixed Hardwood		87	Cords		
	<i>Red Maple</i>		74	<i>Cords</i>		
	<i>Sugar Maple</i>		10	<i>Cords</i>		
	<i>Yellow Birch</i>		3	<i>Cords</i>		
	Mixed Spruce		8	Cords		
	<i>White Spruce</i>		8	<i>Cords</i>		
	Quaking Aspen		4	Cords		
10	Basswood	Sawtimber	5.8	MBF	21.5	\$5,281.60
	Red Maple	Pulpwood	0.4	MBF		
	Sugar Maple		16.1	MBF		
	Balsam Fir		13	Cords		
	Mixed Hardwood		154	Cords		
	<i>Basswood</i>		18	<i>Cords</i>		
	<i>Black Cherry</i>		1	<i>Cords</i>		
	<i>Red Maple</i>		10	<i>Cords</i>		
	<i>Sugar Maple</i>		125	<i>Cords</i>		
	Mixed Spruce		3	Cords		
	<i>Black Spruce</i>		3	<i>Cords</i>		
	Quaking Aspen		37	Cords		
	11		Basswood	Sawtimber		
Red Maple		Pulpwood	0.5	MBF		
Sugar Maple			17.3	MBF		
Balsam Fir			14	Cords		
Mixed Hardwood			165	Cords		
<i>Basswood</i>			20	<i>Cords</i>		
<i>Black Cherry</i>			2	<i>Cords</i>		
<i>Red Maple</i>			10	<i>Cords</i>		
<i>Sugar Maple</i>			133	<i>Cords</i>		
Mixed Spruce			3	Cords		
<i>Black Spruce</i>			3	<i>Cords</i>		
Quaking Aspen			40	Cords		
12			Basswood	Sawtimber	1.7	MBF
	Red Maple	Pulpwood	3.2	MBF		
	Sugar Maple		0.4	MBF		
	Balsam Fir		8	Cords		
	Mixed Hardwood		89	Cords		
	<i>Basswood</i>		1	<i>Cords</i>		
	<i>Red Maple</i>		77	<i>Cords</i>		
	<i>Sugar Maple</i>		11	<i>Cords</i>		

DESCRIPTION OF TIMBER BY PU (PU), CON'T

PU	MARKET GROUP	PRODUCT	QUANTITY	UNIT	ACRES	ADVERTISE PRICE
12 con't	Quaking Aspen	Pulpwood	18	Cords		
13	Red Maple	Sawtimber	2.0	MBF	18.2	\$2,069.05
	Sugar Maple		0.7	MBF		
	Balsam Fir	Pulpwood	10	Cords		
	Mixed Hardwood		181	Cords		
	<i>Red Maple</i>		93	<i>Cords</i>		
	<i>Sugar Maple</i>		88	<i>Cords</i>		
14	Red Maple	Sawtimber	5.4	MBF	8.9	\$2,118.75
	Sugar Maple	Sawtimber	1.8	MBF		
	Balsam Fir		Pulpwood	3		
	Mixed Hardwood	56		Cords		
	<i>Basswood</i>	3		<i>Cords</i>		
	<i>Red Maple</i>	30		<i>Cords</i>		
	<i>Sugar Maple</i>	23		<i>Cords</i>		
	Quaking Aspen	41		Cords		
	TOTAL:			96.1		
TOTAL:			3,828	Cords		

Sale Specific Conditions & Requirements

Sale Name: Marvelous McFarland Mix

Sale Number: 32-007-24 Seq#: 1

1 - Sale Area

1.2 - Boundaries

1.2.1 - Painted Boundaries (9/19)

The sale boundary and Payment Unit boundaries are marked and identified by blue, red and yellow paint. Exterior sale boundary lines against private property are marked with blue paint. Exterior sale boundary lines against state are marked with red paint. Interior Payment Unit boundaries are marked with yellow paint. Retention patches are marked with red paint; no harvesting activities may occur within these areas. The painted boundary line trees are not Included Timber and are to be protected unless marked with orange paint. Yellow painted trees designating an interior Payment Unit boundary are only to be cut when all surrounding Payment Units have been paid.

2 - Timber Specifications

2.1 - Included Timber

2.1.1 - Clearcut Unit(s) with Unmerchantable Trees (6/14)

Within Payment Unit(s) 1-5, cut all trees that are two (2) inches or more at DBH, , except within Payment Units 1 and 3, do not cut cedar or hemlock.

2.1.3 - Cut Tree Marked Unit(s) (12/08)

Within Payment Unit(s) 6-14, all trees are designated for cutting when marked with orange paint above and below stump height, regardless of merchantability.

In addition:

Within Payment Unit 6, cut all maple, aspen, ironwood, and birch which meet minimum piece specifications in 2.2 Utilization.

Within Payment Units 9-12, cut all spruce and fir which meet minimum piece specifications in 2.2 Utilization.

Within Payment Unit 13, cut all aspen, spruce, and fir which meet minimum piece specifications in 2.2 Utilization.

2.2 - Utilization

2.2.3 - Stump heights (4/07)

Stump heights within Payment Units 3, 4, and 6-8 shall not exceed 12 inches for trees greater than 10 inches DBH and 4 inches for trees smaller than 10 inches DBH. This is in order to facilitate planting operations.

3 - Payments

3.3 - Pre-measured Sales

3.3.4 - Dividing Payment Units (7/14)

Payment Unit(s) valued at more than \$40,000 may be divided at the request of the Purchaser and upon approval of the Unit Manager. Dividing Payment Units is a contract modification which requires a Timber Sale Contract Amendment. There will be only one division per Payment Unit.

3.4 - Damaged Timber

3.4.1 - Damaged timber (7/16)

General Condition and Requirement 3.4 Damaged Timber, defines liquidated damages for undesignated live merchantable trees which are cut or injured. In addition, extreme care should be taken to avoid damage to tree seedlings and saplings.

No damage is acceptable to undesignated live merchantable trees. Within the Sale Area, if more than 5% of trees (> 4.5" DBH) within a specified area of the sale are damaged, liquidated damages will be assessed for all trees damaged. Rates will be in accordance with General Condition and Requirement 3.4 Damaged Timber.

4 - Transportation

4.1 - Construction

4.1.3 - Slash and Earthen Piles (8/04)

Piles or windrows of earth along roads and landings that have been widened or constructed shall be leveled. Slash from road maintenance or construction, including stumps, shall be dispersed throughout the sale.

4.1.4 - Timber Removed for Construction (3/23)

Trees cut or damaged in the process of pre-approved road, landing, or skid trail construction will be decked in an area separate from other Designated Timber and not removed until measured by the Sale Administrator. Payment will be made at contract prices or average prices, if not on the contract.

4.1.6 - Road Construction (4/24)

Construction of new roads or improvements of existing roads shall be done in such a way as to minimize the environmental and visual impacts. Merchantable trees shall be cut and utilized unless otherwise directed. Non-merchantable trees shall be severed and laid flat on the ground. Slash shall be scattered, and not left in windrows and kept a minimum of 10 feet back from the road edge. Stumps shall be set upright, not left on edge, and be moved at least 10 feet away from the road edge. Disturbed soil shall be feathered into the woods and not left in berms or windrows.

4.1.7 - Road Closure (10/11)

All new roads built into the sale must be blocked to vehicle traffic within 60 days of completion of hauling. Overgrown roads that are reopened shall be considered new roads. In general, this will require constructing a four (4') foot high berm of stumps and logs covered with earth. Temporary berms may be required if no sale activity occurs for 60 or more consecutive days. Contact the Sale Administrator for specific details of design and placement.

4.2 - Maintenance

4.2.1 - Hauling Restriction (12/08)

Hauling may be restricted on forest roads by the Unit Manager or his/her representative. The restriction may occur during spring breakup or during wet weather conditions.

4.2.3 - Road maintenance (8/13)

The following road maintenance is required: 150 yards of gravel must be spread on the Hamilton Homestead Road. Within 60 days of completion of hauling, or if no hauling occurs for 60 days, the Unit Manager or his/her representative may require the road to be maintained and graded. This includes cleaning of drainage areas, grading, crowning and filling with gravel, if necessary. Damages will be assessed if grading/repair does not occur.

4.4 - Access

4.4.1 - Private property access (3/11)

Permission for access across private land is the responsibility of the Purchaser. Should the Purchaser desire to cross private land (Lyme Great Lakes Timberland), a copy of the written permission from the private land-owner may be required by the DNR.

5 - Operations

5.2 - Conduct of Operations

5.2.1 - Slash

5.2.1.11 - Slash for Reforestation (3/21)

To facilitate reforestation, the Sale Area shall be left with slash evenly distributed. Bunched tops within the cutting area shall be broken up and scattered. Stumps shall be cut low to the ground. Processing sites shall not be left with a compacted layer of slash; tops from these sites shall be hauled back into the cut area and scattered.

5.2.3 - Operating Restrictions

5.2.3.1 - Operating Restrictions (9/11)

Within Payment Unit(s) 1-14, unless changed by written agreement, cutting and skidding are limited to December 1 to April 1. This restriction is due to the deer wintering complex.

5.2.3.3 - Bark Slippage Restriction (3/09)

Within Payment Unit(s) 9-14, unless changed by written agreement, cutting and skidding are not permitted during the period of April 15 to July 15. This restriction is because of bark slippage.

5.2.32 - Decking/Landing Restoration (9/13)

All decking and landing areas must have the surface area restored to a condition equal to or better than before. This is to ensure the proper regeneration of the stand. Wood debris, chips and "cookies" from trimmings must be removed or scattered away from landing and loading areas and may not be windrowed on the edge.

5.2.38 - No Decking Against Live Trees (2/04)

Cut products may not be decked against unmarked or designated leave trees.

5.4 - Soil Protection

5.4.1 - Rutting Restriction, General (7/16)

Operations are to cease immediately if equipment and weather conditions result in rutting of roads and/or skid trails which is 12 inches or greater in depth and 50 feet in length. The Unit Manager or his/her representative may restrict hauling and/or skidding if ruts exceed the specified depth. With the Unit Manager or his/her representative's approval, the Purchaser may return to the area when the risk of rutting has decreased.

5.4.2 - Skid Trails (2/04)

Skid trails up and down slopes should be avoided. If, however, this is unavoidable, these trails will be left in a non-erodible condition using water bars, logs, and slash. Placing of slash on these skid trails while logging is ongoing may alleviate need for any further action. At the direction of the Sale Administrator, seed, fertilizer, and mulch may also be required.

5.8 - Protection of Endangered Species

5.8.5 - Protection of Raptor Nests (3/13)

All trees with raptor nests will be protected if found during harvesting operations. Notification will be made to the Unit Manager or his/her representative who will notify the Wildlife Biologist so an onsite evaluation and recommendation can be made, if necessary.

6 - Safety and Fire Prevention

6.2 - Signing

6.2.1 - Road Posting (10/20)

The Purchaser is responsible for posting and maintaining caution signs on Hamilton Homestead Road and Escanaba River Road prior to beginning operations. The road must be posted at appropriate distances from the Sale Area to warn of logging activity and truck traffic. Signs must be removed when harvest operations are suspended or completed. The Purchaser will provide these signs.

7 - Other Conditions

7.3 - Contract Modifications

7.3.3 - Modification for Reforestation (8/05)

When contractual work of Purchaser has been accepted for any Payment Unit identified on Sale Area Map, Payment Unit will be eliminated from the Sale Area on written notice so that reforestation operations can begin.



TIMBER SALE MAP

This information provided by authority of Part 525, 1994 PA 451, as amended.

Sale Number	Date	
32-007-24	10/02/2024	
Scale	Page	Of
1:15,840	1	2

Forest Management Unit	County	Mapped By: Siler
Gwinn Mgt Unit	Marquette	Cruised By: Gwinn Staff

Township	Range	Section(s) and Subdivision(s)
43N	24W	N1/2NE; Sec. 7 SESE; Sec. 9 SESE; Sec. 16 S1/2NW,N1/2NE,SWNE,N1/2SW,SESW; Sec. 17 SENE,NWSE; Sec. 18 NE,SE; Sec. 19

Cover Type			
A = Aspen	J = Jack Pine	O = Oak	U = Upland Brush
B = Paper Birch	K = Rock	P = Lowland Poplar	UM = Upland Mix Forest
C = Cedar	L = Lowland Brush	Q = Mixed Swamp Conifer	V = Bog or Marsh
D = Treed Bog	LM = Lowland Mix Forest	R = Red Pine	W = White Pine
E = Swamp Hardwoods	M = Maple, Beech, Birch	S = Black Spruce	X = Non Stocked
F = Spruce/Fir	MC = Mixed Conifer	T = Tamarack	Y = Sand
G = Grass	MD = Mixed Deciduous		Z = Water
H = Hemlock	N = Marsh		

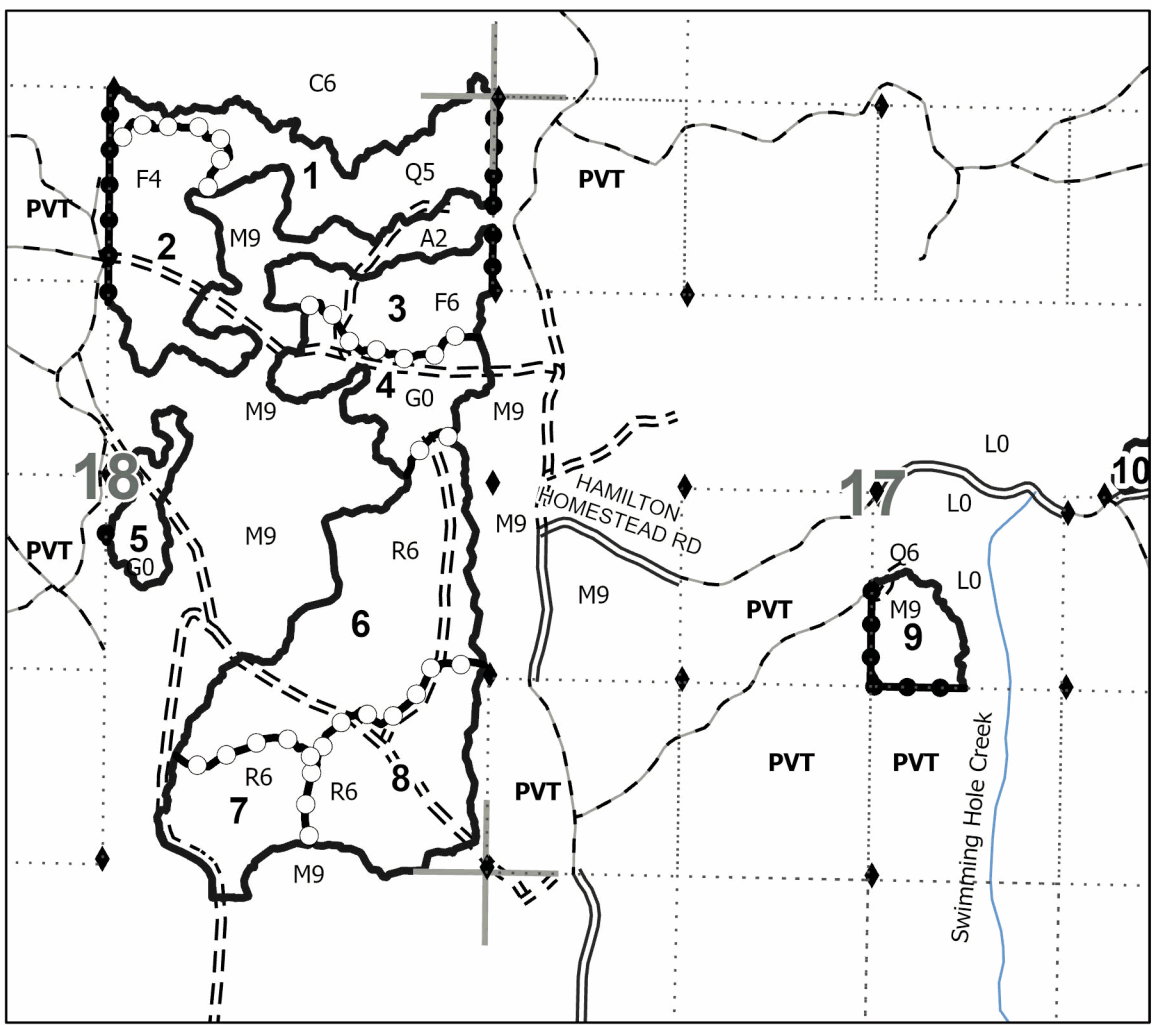
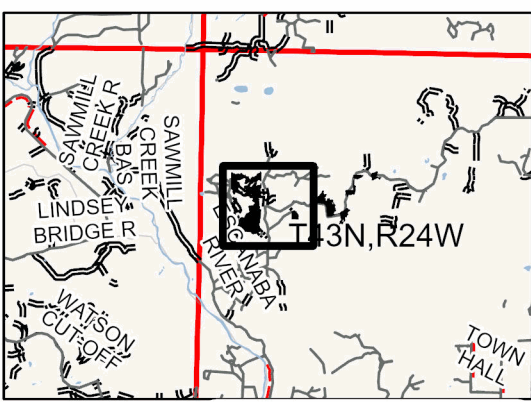
Density	
0 = Non Stocked	5 = Pole Timber Medium
1 = Seedling Sapling Poor	6 = Pole Timber Well
2 = Seedling Sapling Medium	7 = Saw Timber Poor
3 = Seedling Sapling Well	8 = Saw Timber Medium
4 = Pole Timber Poor	9 = Saw Timber Well

PU #	Acres	PU #	Acres	PU #	Acres
1	27.6	6	48.2	11	23
2	26.2	7	17.4	12	15.6
3	17.6	8	27.3	13	18.2
4	17.4	9	9.7	14	8.9
5	7.2	10	21.5		

**Marvelous
McFarland
Mix**

285.8 Acres

Locator Map 1:200,000



Legend

- Against State (Red)
- Private Line (Blue)
- Payment Unit (Yellow)
- Primary Forest Road
- Forest Access Route
- Private Gravel/Dirt
- Perennial River
- Survey Grade Corner
- Nearby Timber Sale
- Adjacent Private Land

Use QR Code to open Map in App





TIMBER SALE MAP

This information provided by authority of Part 525, 1994 PA 451, as amended.

Sale Number	Date	
32-007-24	10/02/2024	
Scale	Page	Of
1:15,840	2	2

Forest Management Unit	County	Mapped By: Brodeur
Gwinn Mgt Unit	Marquette	Cruised By: Gwinn Staff

Township	Range	Section(s) and Subdivision(s)
43N	24W	N1/2NE; Sec. 7 SESE; Sec. 9 SESE; Sec. 16 S1/2NW,N1/2NE,SWNE,N1/2SW,SESW; Sec. 17 SENE,NWSE; Sec. 18 NE,SE; Sec. 19

Cover Type			
A = Aspen	J = Jack Pine	O = Oak	U = Upland Brush
B = Paper Birch	K = Rock	P = Lowland Poplar	UM = Upland Mix Forest
C = Cedar	L = Lowland Brush	Q = Mixed Swamp Conifer	V = Bog or Marsh
D = Treed Bog	LM = Lowland Mix Forest	R = Red Pine	W = White Pine
E = Swamp Hardwoods	M = Maple, Beech, Birch	S = Black Spruce	X = Non Stocked
F = Spruce/Fir	MC = Mixed Conifer	T = Tamarack	Y = Sand
G = Grass	MD = Mixed Deciduous		Z = Water
H = Hemlock	N = Marsh		

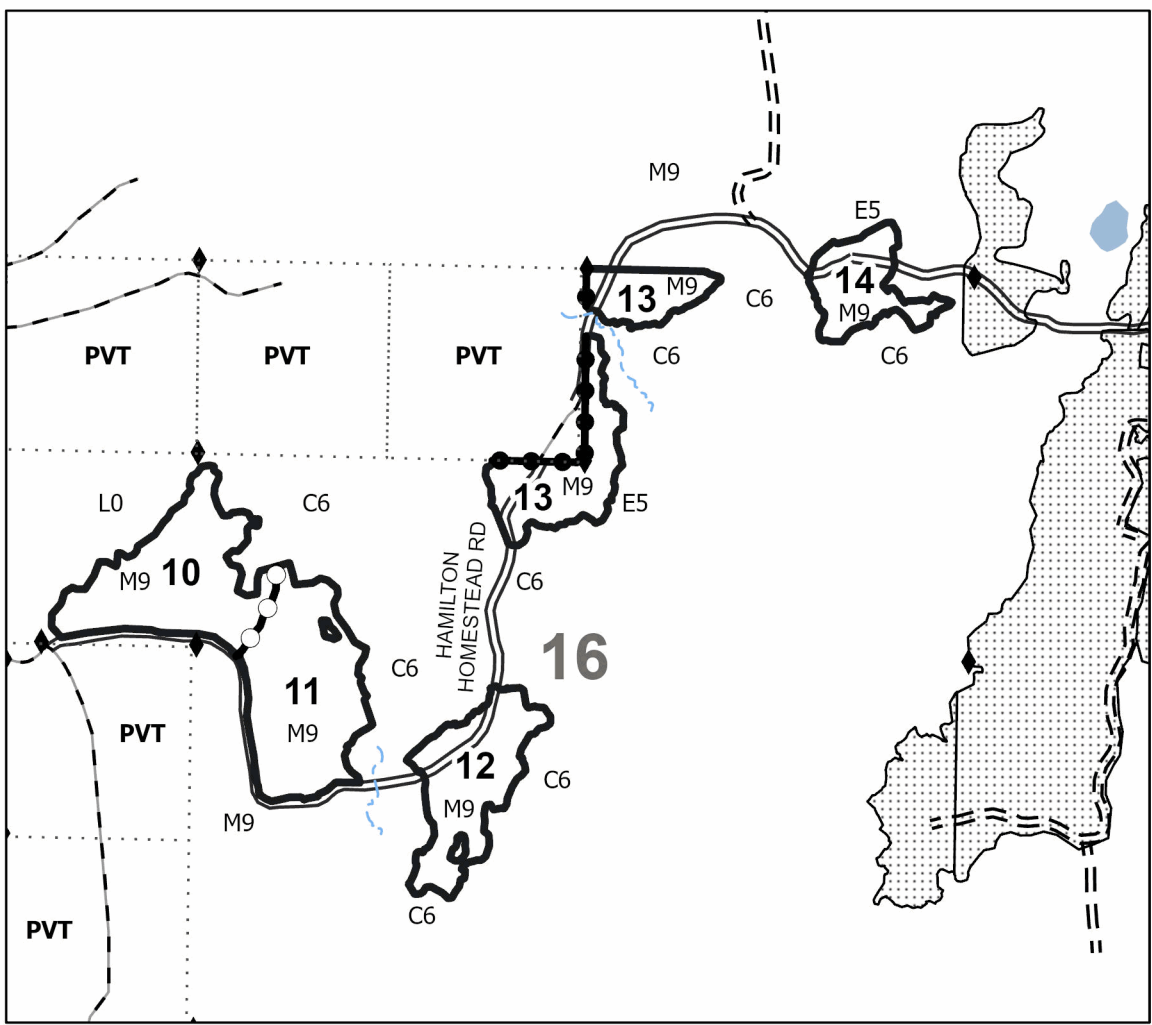
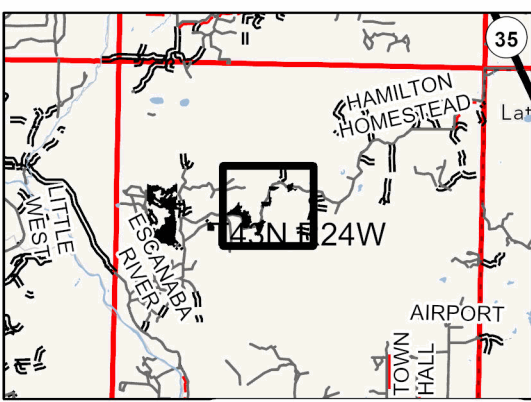
Density	
0 = Non Stocked	5 = Pole Timber Medium
1 = Seedling Sapling Poor	6 = Pole Timber Well
2 = Seedling Sapling Medium	7 = Saw Timber Poor
3 = Seedling Sapling Well	8 = Saw Timber Medium
4 = Pole Timber Poor	9 = Saw Timber Well

PU #	Acres	PU #	Acres	PU #	Acres
1	27.6	6	48.2	11	23
2	26.2	7	17.4	12	15.6
3	17.6	8	27.3	13	18.2
4	17.4	9	9.7	14	8.9
5	7.2	10	21.5		

**Marvelous
McFarland
Mix**

285.8 Acres

Locator Map 1:200,000



Legend

- Against State (Red)
- Private Line (Blue)
- Payment Unit (Yellow)
- Nearby Timber Sale
- Adjacent Private Land
- Primary Forest Road
- Forest Access Route
- Private Gravel/Dirt
- Survey Grade Corner
- Lakes
- Stream

