



**DEPARTMENT OF NATURAL RESOURCES
STATE OF MICHIGAN**

TIMBER SALE PROSPECTUS #7527

REVISION NOTICE #1 - March 27, 2025

SCHEDULED SALE DATE AND TIME: **2:00 p.m. (local time) on Monday, April 21, 2025**

LOCATION: **GWINN MGMT UNIT, 410 WEST M 35, GWINN, MI 49841**

This prospectus has been modified with the following changes.

The scheduled bid date and time have been changed. The scheduled bid date and time were Monday, April 14 2025 2:00 PM (local time) and have been changed to Monday, April 21 2025 2:00 PM (local time).

We apologize for any inconvenience this may have caused. If you need assistance, please contact Mike Brodeur at 906-346-9201 ext. 103.



**DEPARTMENT OF NATURAL RESOURCES
STATE OF MICHIGAN
TIMBER SALE PROSPECTUS #7527**

SCHEDULED SALE DATE AND TIME: **2:00 p.m. (local time) on April 14, 2025.**

LOCATION: **GWINN MGMT UNIT, 410 WEST M 35, GWINN, MI 49841.**

CONTACT NAME: Mike Brodeur

PHONE NUMBER: (906) 346-9201

PROSPECTUS NOTE: The bidder is advised to inspect the sale area and review the location, estimated volumes, operating costs and contract terms of proposed sales. Please be aware that some landowners may request 60 days or more notice for access across their land.

Notice is hereby given that bids will be received by the Unit Manager, GWINN MANAGEMENT UNIT, for certain timber on the following described lands:

Alder Dash (32-010-24) / T45N, R28W, SEC. 22, N1/2NW,SWNW,NE,NWSE.

T45N, R28W, SEC. 23, NW,SWNE,SW,NWSE.

Marquette County, Advertised Price \$71,010.70, 183.3 Acres, Aspen, Spruce/Fir/Tamarack.

TIMBER SALE INFORMATION

Alder Dash (32-010-24)

T45N, R28W, SEC. 22; T45N, R28W, SEC. 23.

Marquette County (Advertised Price \$71,010.70)

A timber sale contract for this lump sum, sealed bid timber sale will be awarded to the responsible bidder offering the highest sealed bid price. All units of volume listed below were estimated using the Inventory Manager computer program and the new Michigan taper model. Bids must be at or above the following advertised price for each product and species:

<u>PRODUCTS & SPECIES</u>	<u>ESTIMATED UNITS*</u>	<u>ADVERTISED PRICE</u>
Sawtimber		
Paper Birch	20.9 MBF	\$ 71.00 / MBF
Sugar Maple	0.5 MBF	\$ 176.00 / MBF
Pulpwood		
Balsam Fir	195 Cords	\$ 8.00 / Cord
Balsam Poplar	105 Cords	\$ 21.50 / Cord
Mixed Hardwood	56 Cords	\$ 9.25 / Cord
Mixed Spruce	611 Cords	\$ 8.45 / Cord
Paper Birch	340 Cords	\$ 11.00 / Cord
Quaking Aspen	2,451 Cords	\$ 21.50 / Cord
Tamarack	329 Cords	\$ 10.65 / Cord

* The total volume is statistically estimated within plus (+) or minus (-) 10.74 percent. There are an estimated 4,138 cords on this timber sale, plus or minus 445 cords at the 95% confidence level. The estimated units are final and not subject to adjustment. Prospective bidders are urged to examine this timber and to make their own estimates of quantity and quality.

BOND AND PAYMENT SCHEDULE:

1. A bond in the amount of \$7,101.07 to insure faithful performance of the conditions of the contract will be deposited by the successful bidder within 21 days of the sale award.
2. Cutting in any sale or unit without the required advance payment would be considered a trespass.
3. Total payment must be paid in advance or according to the following schedule:
 - (a) Ten percent (10%) of the sale value must be paid within 21 days of the sale award.
 - (b) The 10% down payment will be credited towards the first unit cut.
 - (c) Payment for each of the following units must be made before cutting begins in that unit:

<u>PAYMENT UNIT NUMBER</u>	<u>PERCENT OF TOTAL SALE VALUE</u>
01	35.2%
02	30.5%
03	11.2%
04	1.4%
05	4.0%
06	0.9%
07	2.3%
08	2.5%
09	0.5%
10	2.9%
11	8.6%

4. If no cutting takes place, the 10% down payment will not be refunded.
5. Operations on the contract issued will terminate on 06/30/2028.

SALE STATISTICS

Volumes were calculated in cubic feet using the Michigan taper model. Cubic foot volume includes all wood inside bark for the product indicated. For display purposes, cubic feet were converted to cords and MBF using a simple conversion factor, e.g. 79 cubic feet per cord and 185 cubic feet per MBF. The cubic foot volumes are precise; the cords and MBF volumes are not. Cubic foot volume cannot be directly converted to cords or boards with precision.

SALE VOLUMES

The total estimated sale volume may not equal the sum of the species/products due to the nature of statistical calculations associated with double sampling methodology.

VOLUME			STATISTICAL RANGE IN CORDS	
TOTAL CUBIC FEET	TOTAL CORDS	PERCENT ERROR	MINIMUM	MAXIMUM
326,928	4,138	10.74%	3,694	4,583

VDU VOLUMES

A VDU is a Volume Determination Unit. Volumes and their associated statistics are calculated at the VDU level and summarized to the sale level. There is often a one to one relationship between a VDU and a Payment Unit, but not always, depending on the cruise design. Refer to the VDU TO PAYMENT UNIT table.

	VOLUME			RANGE IN CORDS	
VDU	TOTAL CUBIC FEET	TOTAL CORDS	PERCENT ERROR	MINIMUM	MAXIMUM
4	178,859	2,264	16.16%	1,898	2,630
6	36,546	463	27.27%	336	589
7	27,770	352	31.33%	241	462
10	16,583	210	49.33%	106	313
13	30,975	392	33.42%	261	523
21	14,829	188	54.13%	86	289
23	4,267	54	97.17%	2	107
26	12,922	164	45.09%	90	237
27	822	10	101.67%	0	21
409	3,354	42	37.66%	26	58
TOTAL:	326,928	4,138		3,047	5,230

VDU TO PAYMENT UNIT

When a VDU is associated with more than one Payment Unit (PU), the VDU volumes are assigned to the PU based on acres of the VDU within the PU.

VDU	VDU ACRES	PU	PU ACRES
4	59.4	1	31.9
4	59.4	2	27.5
6	27.5	11	27.5
7	37.2	4	9.5
7	37.2	5	27.7
10	13.0	10	13.0
13	11.0	3	11.0
21	7.5	8	7.5
23	4.9	6	4.9
26	16.5	7	16.5
27	1.0	7	1.0
409	5.3	9	5.3
TOTAL:	279.9		183.3

DESCRIPTION OF TIMBER BY PU (PU)

PU	MARKET GROUP	PRODUCT	QUANTITY	UNIT	ACRES	ADVERTISE PRICE
1	Paper Birch	Sawtimber	4.4	MBF	31.9	\$25,025.65
	Balsam Fir	Pulpwood	55	Cords		
	Balsam Poplar		20	Cords		
	Mixed Hardwood		14	Cords		
	<i>Red Maple</i>		14	Cords		
	Mixed Spruce		15	Cords		
	<i>White Spruce</i>		15	Cords		
	Paper Birch		6	Cords		
	Quaking Aspen		1,094	Cords		
2	Paper Birch	Sawtimber	3.8	MBF	27.5	\$21,623.65
	Balsam Fir	Pulpwood	48	Cords		
	Balsam Poplar		18	Cords		
	Mixed Hardwood		12	Cords		
	<i>Red Maple</i>		12	Cords		
	Mixed Spruce		13	Cords		
	<i>White Spruce</i>		13	Cords		
	Paper Birch		6	Cords		
	Quaking Aspen		944	Cords		
3	Balsam Fir	Pulpwood	9	Cords	11.0	\$7,928.00
	Balsam Poplar		10	Cords		
	Paper Birch		34	Cords		
	Quaking Aspen		338	Cords		
4	Paper Birch	Sawtimber	0.4	MBF	9.5	\$960.85
	Sugar Maple		0.1	MBF		
	Balsam Fir	Pulpwood	2	Cords		
	Balsam Poplar		3	Cords		
	Mixed Hardwood		1	Cords		
	<i>Sugar Maple</i>		1	Cords		
	Mixed Spruce		62	Cords		
	<i>Black Spruce</i>		62	Cords		
	Paper Birch		4	Cords		
	Quaking Aspen		8	Cords		
	Tamarack		8	Cords		
5	Paper Birch	Sawtimber	1.0	MBF	27.7	\$2,837.05
	Sugar Maple		0.4	MBF		
	Balsam Fir	Pulpwood	4	Cords		
	Balsam Poplar		10	Cords		
	Mixed Hardwood		2	Cords		
	<i>Black Cherry</i>		1	Cords		
	<i>Sugar Maple</i>		1	Cords		
	Mixed Spruce		182	Cords		
	<i>Black Spruce</i>		182	Cords		
	Paper Birch		10	Cords		
	Quaking Aspen		24	Cords		
	Tamarack		25	Cords		
6	Balsam Poplar	Pulpwood	13	Cords	4.9	\$669.95
	Mixed Spruce		21	Cords		
	<i>Black Spruce</i>		21	Cords		
	Tamarack		20	Cords		
7	Balsam Fir	Pulpwood	6	Cords	17.5	\$1,634.45
	Mixed Spruce		97	Cords		
	<i>Black Spruce</i>		94	Cords		
	<i>White Spruce</i>		3	Cords		
	Tamarack		72	Cords		
8	Mixed Spruce	Pulpwood	88	Cords	7.5	\$1,808.60

DESCRIPTION OF TIMBER BY PU (PU), CON'T

PU	MARKET GROUP	PRODUCT	QUANTITY	UNIT	ACRES	ADVERTISE PRICE
8 con't	<i>Black Spruce</i> Tamarack	<i>Pulpwood</i>	88 100	<i>Cords</i> Cords		
9	Balsam Fir Mixed Spruce <i>White Spruce</i> Quaking Aspen	Pulpwood	38 2 2 2	Cords Cords <i>Cords</i> Cords	5.3	\$363.90
10	Mixed Spruce <i>Black Spruce</i> Paper Birch Tamarack	Pulpwood	82 82 24 104	Cords <i>Cords</i> Cords Cords	13.0	\$2,064.50
11	Paper Birch Balsam Fir Balsam Poplar Mixed Hardwood <i>Red Maple</i> Mixed Spruce <i>Black Spruce</i> <i>White Spruce</i> Paper Birch Quaking Aspen	Sawtimber Pulpwood	11.3 33 31 27 27 49 42 7 256 41	MBF Cords Cords Cords <i>Cords</i> Cords <i>Cords</i> <i>Cords</i> Cords Cords	27.5	\$6,094.10
TOTAL:			21.4	MBF		
TOTAL:			4,087	Cords		

Sale Specific Conditions & Requirements

Sale Name: Alder Dash

Sale Number: 32-010-24 Seq#: 1

1 - Sale Area

1.2 - Boundaries

1.2.1 - Painted Boundaries (9/19)

The sale boundary and Payment Unit boundaries are marked and identified by blue, red, and yellow paint. Exterior sale boundary lines against private are marked with blue paint. Exterior sale boundary lines against state are marked with red paint. Interior Payment Unit boundaries are marked with yellow paint. The painted boundary line trees are not Included Timber and are to be protected. Yellow painted trees designating interior Payment Unit boundaries are Included Timber and are only to be cut when all surrounding Payment Units have been paid. The ELF Line is the Payment Unit line between Payment Units 7 and 8.

2 - Timber Specifications

2.1 - Included Timber

2.1.1 - Clearcut Unit(s) with Unmerchantable Trees (6/14)

Within Payment Unit(s) 1-11, cut all trees that are two (2) inches or more at DBH except:

Within Payment Units 1-8, do not cut any cedar, hemlock, white pine, or red pine.

Within Payment Unit 9, do not cut any oak, red pine, or white pine.

Within Payment Units 10 and 11, do not cut any cedar, hemlock, or white pine.

3 - Payments

3.4 - Damaged Timber

3.4.1 - Damaged timber (7/16)

General Condition and Requirement 3.4 Damaged Timber, defines liquidated damages for undesignated live merchantable trees which are cut or injured. In addition, extreme care should be taken to avoid damage to tree seedlings and saplings.

No damage is acceptable to undesignated live merchantable trees. Within the Sale Area, if more than 5% of trees (> 4.5" DBH) within a specified area of the sale are damaged, liquidated damages will be assessed for all trees damaged. Rates will be in accordance with General Condition and Requirement 3.4 Damaged Timber.

4 - Transportation

4.1 - Construction

4.1.3 - Slash and Earthen Piles (8/04)

Piles or windrows of earth along roads and landings that have been widened or constructed shall be leveled. Slash from road maintenance or construction, including stumps, shall be dispersed throughout the sale.

4.1.7 - Road Closure (10/11)

All new roads built into the sale must be blocked to vehicle traffic upon completion of the sale. Overgrown roads that are reopened shall be considered new roads. In general, this will require constructing a four (4') foot high berm of stumps and logs covered with earth. Contact the Sale Administrator for specific details of design and placement.

4.2 - Maintenance

4.2.2 - Fill Material (4/07)

To maintain roads, fill material may be needed in areas where "holes" exist or may be expected to develop. This fill material should be placed before trucking begins. Depending on the time of year, multiple areas may require fill material for access across the Sale Area. Contact the Sale Administrator regarding the availability of onsite sand or gravel from adjacent State-owned lands.

4.2.3 - Road maintenance (8/13)

The following road maintenance may be needed: Within 60 days of completion of hauling, or if no hauling occurs for 60 days, the road must be maintained and graded. This includes cleaning of drainage areas, grading, crowning and filling with gravel, if necessary. Damages will be assessed if grading/repair does not occur.

4.2.4 - Grading (10/16)

For completion of the sale, state forest roads must be graded. In general, this will require a road grader or bulldozer to shape up the roads after forest products have been hauled off site. This includes cleaning of drainage areas, grading, crowning, and filling with gravel, if necessary. The grading equipment to be used must be approved by the Unit Manager or his/her representative.

5 - Operations

5.1 - Notification

5.1.1 - Pre-sale Conference (10/16)

A pre-sale conference between the Purchaser and Sale Administrator is required prior to beginning any operations. The Unit Manager or his/her representative must be contacted at least three (3) business days in advance to schedule the conference.

5.2 - Conduct of Operations

5.2.2 - Hazard Trees/Snags

5.2.2.1 - Den Trees (10/16)

Obvious hollow and/or den trees shall be protected and left standing unless they are a safety hazard.

5.2.3 - Operating Restrictions

5.2.3.1 - Operating Restrictions (9/11)

Within Payment Unit(s) 3-8, 10, and 11, unless changed by written agreement, cutting, skidding, and hauling are limited to the period of December 15 to April 1. This restriction is due to wet soils.

5.2.32 - Decking/Landing Restoration (9/13)

All decking and landing areas must have the surface area restored to a condition equal to or better than before. This is to ensure the proper regeneration of the stand. Wood debris, chips and "cookies" from trimmings must be removed or scattered away from landing and loading areas and may not be windrowed on the edge.

5.2.37 - No Decking Areas (12/08)

No decking is allowed within 50 feet of County Road CW.

5.2.38 - No Decking Against Live Trees (2/04)

Cut products may not be decked against unmarked or designated leave trees.

5.4 - Soil Protection

5.4.1 - Rutting Restriction, General (7/16)

Operations are to cease immediately if equipment and weather conditions result in rutting of roads and/or skid trails which is 12 inches or greater in depth and 50 feet in length. The Unit Manager or his/her representative may restrict hauling and/or skidding if ruts exceed the specified depth. With the Unit Manager or his/her representative's approval, the Purchaser may return to the area when the risk of rutting has decreased.

5.4.2 - Skid Trails (2/04)

Skid trails up and down slopes should be avoided. If, however, this is unavoidable, these trails will be left in a non-erodible condition using water bars, logs, and slash. Placing of slash on these skid trails while logging is ongoing may alleviate need for any further action. At the direction of the Sale Administrator, seed, fertilizer, and mulch may also be required.

5.8 - Protection of Endangered Species

5.8.5 - Protection of Raptor Nests (3/13)

All trees with raptor nests will be protected if found during harvesting operations. Notification will be made to the Unit Manager or his/her representative who will notify the Wildlife Biologist so an onsite evaluation and recommendation can be

made, if necessary.

6 - Safety and Fire Prevention

6.2 - Signing

6.2.1 - Road Posting (10/20)

The Purchaser is responsible for posting and maintaining caution signs on Flat Rock Road and near the sale area prior to beginning operations. The road must be posted at appropriate distances from the sale area to warn of logging activity and truck traffic. Signs must be removed when harvest operations are suspended or completed. The Purchaser will provide these signs.

7 - Other Conditions

7.3 - Contract Modifications

7.3.3 - Modification for Reforestation (8/05)

When contractual work of Purchaser has been accepted for any Payment Unit identified on Sale Area Map, Payment Unit will be eliminated from the Sale Area on written notice so that reforestation operations can begin.

TIMBER SALE MAP

This information provided by authority of Part 525, 1994 PA 451, as amended.

Sale Number

32-010-24

Date

07/29/2024

Forest Management Unit

Gwinn Mgt Unit

County

Marquette

Mapped By: Gould

Cruised By: Gould, Siler

Scale

1:20,000

Page

1

Of

1

Township

45N

Range

28W

Section(s) and

Subdivision(s) Sec. 22 N1/2NW,SWNW,NE,NWSE; Sec. 23 NW,SWNE,SW,NWSE;

Cover Type

A = Aspen	J = Jack Pine	O = Oak	U = Upland Brush
B = Paper Birch	K = Rock	P = Lowland Poplar	UM = Upland Mix Forest
C = Cedar	L = Lowland Brush	Q = Mixed Swamp Conifer	V = Bog or Marsh
D = Treed Bog	LM = Lowland Mix Forest	R = Red Pine	W = White Pine
E = Swamp Hardwoods	M = Maple, Beech, Birch	S = Black Spruce	X = Non Stocked
F = Spruce/Fir	MC = Mixed Conifer	T = Tamarack	Y = Sand
G = Grass	MD = Mixed Deciduous		Z = Water
H = Hemlock	N = Marsh		

Density

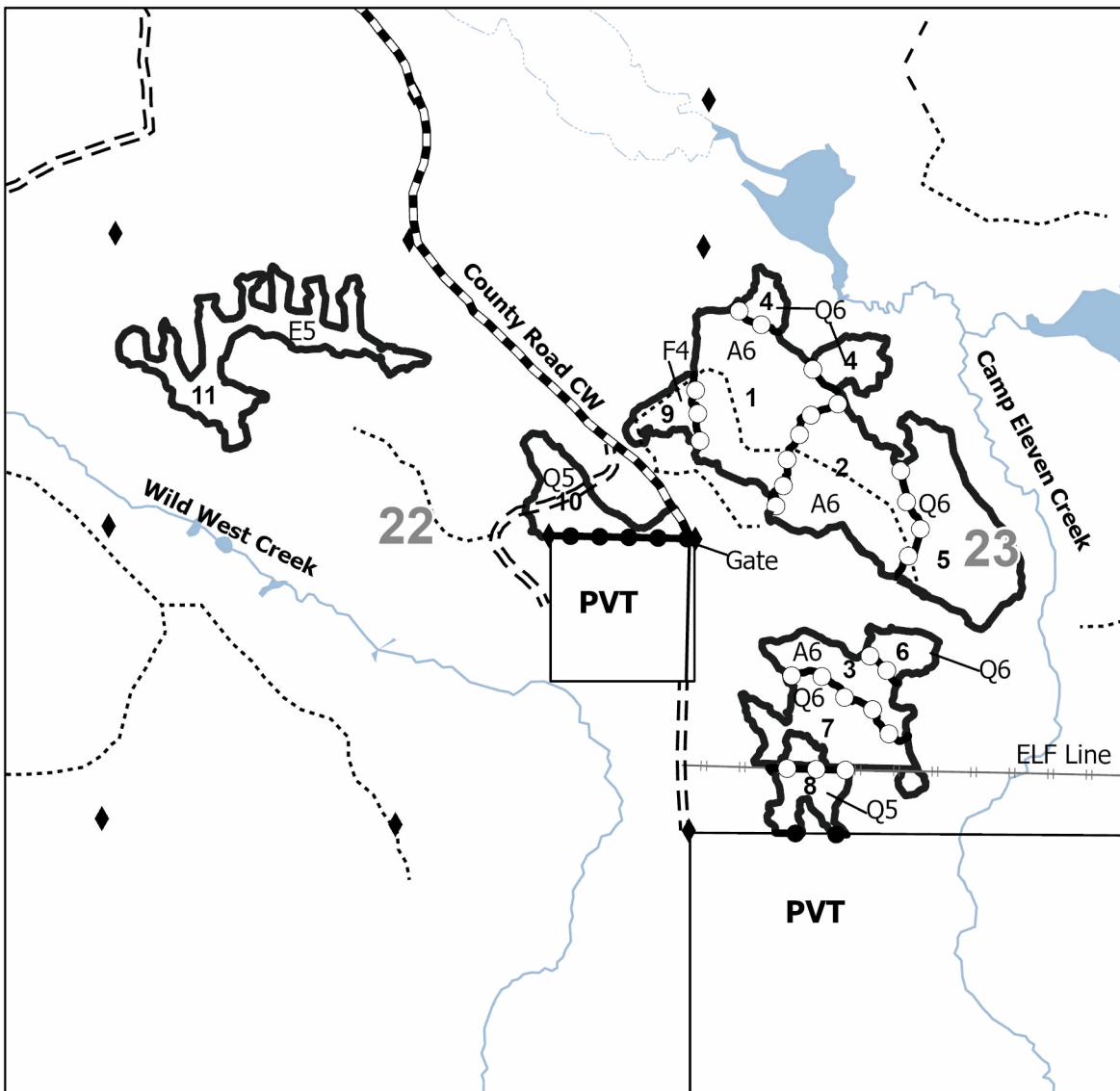
0 = Non Stocked	5 = Pole Timber Medium
1 = Seedling Sapling Poor	6 = Pole Timber Well
2 = Seedling Sapling Medium	7 = Saw Timber Poor
3 = Seedling Sapling Well	8 = Saw Timber Medium
4 = Pole Timber Poor	9 = Saw Timber Well

Locator Map (1:200,000)

PU #	Acres	PU #	Acres	PU #	Acres
1	31.9	5	27.7	9	5.3
2	27.5	6	4.9	10	13
3	11	7	17.5	11	27.5
4	9.5	8	7.5		

Alder Dash**183.3 Acres****Compartment 32272**

0 0.25 0.5 1 Miles

**Legend**

- Against State (Red)
- Payment Unit (Yellow)
- Private Line (Blue)
- Primary Forest Road
- == Forest Access Route
- ... Administrative Access Only
- Paved Road
- Government Gravel/Dirt
- - - Private Gravel/Dirt
- ◆ Survey Corners



Use QR Code to open Map in App

