



**DEPARTMENT OF NATURAL RESOURCES
STATE OF MICHIGAN
TIMBER SALE PROSPECTUS #7443**

SCHEDULED SALE DATE AND TIME: **4:00 p.m. (local time) on June 20, 2024.**

LOCATION: **TRAVERSE CITY MGMT UNIT, 2122 M 37 SOUTH, TRAVERSE CITY, MI 49685.**

CONTACT NAME: Patrick Cotant

PHONE NUMBER: (231) 649-0544

PROSPECTUS NOTE: The bidder is advised to inspect the sale area and review the location, estimated volumes, operating costs and contract terms of proposed sales. Please be aware that some landowners may request 60 days or more notice for access across their land.

Notice is hereby given that bids will be received by the Unit Manager, TRAVERSE CITY MANAGEMENT UNIT, for certain timber on the following described lands:

Farewell Miggy Red Pine (61-103-24) / T25N, R07W, SEC. 24, SESW,SE.

Kalkaska County, Advertised Price \$21,519.55, 76.6 Acres, Jack Pine, Red Pine.

SALE NOTE: This sale has a 'no activity' period from May 2nd to August 15th. This is because of the adjacent Kirtland Warbler habitat.

TIMBER SALE INFORMATION

Farewell Miggy Red Pine (61-103-24)
T25N, R07W, SEC. 24.
Kalkaska County (Advertised Price \$21,519.55)

SALE NOTE: This sale has a 'no activity' period from May 2nd to August 15th. This is because of the adjacent Kirtland Warbler habitat.

A timber sale contract for this lump sum, sealed bid timber sale will be awarded to the responsible bidder offering the highest sealed bid price. All units of volume listed below were estimated using the Inventory Manager computer program and the new Michigan taper model. Bids must be at or above the following advertised price for each product and species:

<u>PRODUCTS & SPECIES</u>	<u>ESTIMATED UNITS*</u>	<u>ADVERTISED PRICE</u>
Sawtimber		
Red Pine	12.6 MBF	\$ 72.00 / MBF
Pulpwood		
Black Cherry	7 Cords	\$ 12.65 / Cord
Jack Pine	24 Cords	\$ 12.65 / Cord
Red Pine	707 Cords	\$ 28.60 / Cord

* The total volume is statistically estimated within plus (+) or minus (-) 22.18 percent. There are an estimated 768 cords on this timber sale, plus or minus 170 cords at the 95% confidence level. The estimated units are final and not subject to adjustment. Prospective bidders are urged to examine this timber and to make their own estimates of quantity and quality.

BOND AND PAYMENT SCHEDULE:

1. A bond in the amount of \$2,151.96 to insure faithful performance of the conditions of the contract will be deposited by the successful bidder within 21 days of the sale award.
2. Cutting in any sale or unit without the required advance payment would be considered a trespass.
3. Total payment must be paid in advance or according to the following schedule :
 - (a) Ten percent (10%) of the sale value must be paid within 21 days of the sale award.
 - (b) The 10% down payment will be credited towards the first unit cut.
 - (c) Payment for each of the following units must be made before cutting begins in that unit:

PAYMENT UNIT NUMBER	PERCENT OF TOTAL SALE VALUE
01	43.9%
02	56.1%
4. If no cutting takes place, the 10% down payment will not be refunded.
5. Operations on the contract issued will terminate on 09/30/2027.

SALE STATISTICS

Volumes were calculated in cubic feet using the Michigan taper model. Cubic foot volume includes all wood inside bark for the product indicated. For display purposes, cubic feet were converted to cords and MBF using a simple conversion factor, e.g. 79 cubic feet per cord and 185 cubic feet per MBF. The cubic foot volumes are precise; the cords and MBF volumes are not. Cubic foot volume cannot be directly converted to cords or boards with precision.

SALE VOLUMES

The total estimated sale volume may not equal the sum of the species/products due to the nature of statistical calculations associated with double sampling methodology.

VOLUME		STATISTICAL RANGE IN CORDS		
TOTAL CUBIC FEET	TOTAL CORDS	PERCENT ERROR	MINIMUM	MAXIMUM
60,662	768	22.18%	598	938

VDU VOLUMES

A VDU is a Volume Determination Unit. Volumes and their associated statistics are calculated at the VDU level and summarized to the sale level. There is often a one to one relationship between a VDU and a Payment Unit, but not always, depending on the cruise design. Refer to the VDU TO PAYMENT UNIT table.

VDU	VOLUME		PERCENT ERROR	RANGE IN CORDS	
	TOTAL CUBIC FEET	TOTAL CORDS		MINIMUM	MAXIMUM
78	60,662	768	22.19%	598	938
TOTAL:	60,662	768		598	938

VDU TO PAYMENT UNIT

When a VDU is associated with more than one Payment Unit (PU), the VDU volumes are assigned to the PU based on acres of the VDU within the PU.

VDU	VDU ACRES	PU	PU ACRES
78	76.6	1	33.6
		2	43.0
TOTAL:	76.6		76.6

DESCRIPTION OF TIMBER BY PU (PU)

PU	MARKET GROUP	PRODUCT	QUANTITY	UNIT	ACRES	ADVERTISE PRICE
1	Red Pine	Sawtimber	5.5	MBF	33.6	\$9,439.10
	Black Cherry	Pulpwood	3	Cords		
	Jack Pine		11	Cords		
	Red Pine		310	Cords		
2	Red Pine	Sawtimber	7.1	MBF	43.0	\$12,080.45
	Black Cherry	Pulpwood	4	Cords		
	Jack Pine		13	Cords		
	Red Pine		397	Cords		
TOTAL:			12.6	MBF		
TOTAL:			738	Cords		

Sale Specific Conditions & Requirements

Sale Name: Farewell Miggy Red Pine

Sale Number: 61-103-24 Seq#: 2

1 - Sale Area

1.2 - Boundaries

1.2.1 - Painted boundaries (9/19)

The sale boundary and Payment Unit boundaries are marked and identified by blue, red and yellow paint. Exterior sale boundary lines against private property are marked with blue paint. Exterior sale boundary lines against state are marked with red paint. Interior Payment Unit boundaries are marked with yellow paint and is along the two track. The painted boundary line trees are not Included Timber and are to be protected unless marked with orange paint.

2 - Timber Specifications

2.1 - Included Timber

2.1.3 - Cut tree marked unit(s) (12/08)

Within Payment Unit(s) 1 and 2, all trees are designated for cutting when marked with orange paint above and below stump height, regardless of merchantability. In addition, cut all jack pine trees.

2.2 - Utilization

2.2.3 - Stump heights (4/07)

Stump heights within the Sale Area shall not exceed 6 inches for all trees.

2.2.4 - Skidding length (2/14)

Skidding of lengths over 17 feet is permissible as long as the Sale Administrator approves the method and machinery used. If at any point damage exceeds specification 3.4.1, all of the remaining wood must be skid in lengths less than 17 feet.

3 - Payments

3.3 - Pre-measured Sales

3.3.4 - Dividing payment units (7/14)

Payment Unit(s) 1 and 2 may be divided at the request of the Purchaser and upon approval of the Unit Manager. Dividing Payment Units is a contract modification which requires a Timber Sale Contract Amendment. There will be only one division per Payment Unit.

3.4 - Damaged Timber

3.4.1 - Damaged timber (7/16)

General Condition and Requirement 3.4 Damaged Timber, defines liquidated damages for undesignated live merchantable trees which are cut or injured.

No damage is acceptable to undesignated live merchantable trees. Within the Sale Area, if more than 10% of trees (> 4.5" DBH) within a specified area of the sale are damaged, liquidated damages will be assessed for all trees damaged. Rates will be in accordance with General Condition and Requirement 3.4 Damaged Timber.

4 - Transportation

4.1 - Construction

4.1.6 - Road construction (1/09)

Improvements of existing roads shall be done in such a way as to minimize the environmental and visual impacts. Merchantable trees shall be cut and utilized unless otherwise directed. Non-merchantable trees shall be severed and laid flat on the ground. Slash shall be scattered, and not left in windrows and kept a minimum of 10 feet back from the road edge. Stumps shall be set upright, not left on edge, and be moved at least 10 feet away from the road edge. Disturbed soil shall be feathered into the woods and not left in berms or windrows.

4.1.12 - No new roads (1/12)

No new roads will be permitted. All operations are limited to existing roads. Skid trails will only be allowed.

5 - Operations

5.1 - Notification

5.1.1 - Pre-sale conference (10/16)

A pre-sale conference on site between the Purchaser and sale administrator is required prior to beginning any operations, to determine landing and road locations. The Unit Manager or his/her representative must be contacted at least 3 days in advance to schedule the conference.

5.2 - Conduct of Operations

5.2.3 - Operating Restrictions

5.2.3.6 - Bark beetle restriction (12/08)

In the event drought creates a high risk of pine bark beetle infestation, pine is not to be cut during the period March 1 through July 1, unless all portions of trees greater than two inches in diameter are removed from the sale area, reduced to chips, or treated to the satisfaction of the Unit Manager or his/her representative, within fifteen days of being severed from the stump. Pine log decks, pulpwood piles and treetops that are piled for chipping in the fall or winter within a 1/4 mile of susceptible sites must be removed before March 15. Residual slash must not be placed in piles or rows and must be spread over the site for quick drying. The Department of Natural Resources will exercise this specification if the risk of damage warrants.

5.2.20 - Equipment width (2/04)

Equipment used to remove designated rows must be capable of moving through cut rows without damaging residual trees.

5.2.32 - Decking/landing restoration (9/13)

All decking and landing areas must have the surface area restored to a condition equal to or better than before. This is to ensure the proper regeneration of the stand. Wood debris, chips and "cookies" from trimmings must be removed or scattered away from landing and loading areas and may not be windrowed on the edge.

5.2.37 - No decking areas (12/08)

No decking is allowed within the wildlife openings designated on the Timber Sale Map.

5.2.38 - No decking against live trees (2/04)

Cut products may not be decked against unmarked or designated leave trees.

5.4 - Soil Protection

5.4.1 - Rutting restriction, general (7/16)

Operations are to cease immediately if equipment and weather conditions result in rutting of roads and/or skid trails which are 12 inches or greater in depth and 50 feet in length. The Unit Manager or his/her representative may restrict hauling and/or skidding if ruts exceed the specified depth. With the Unit Manager or his/her representative's approval, the Purchaser may return to the area when the risk of rutting has decreased.

5.8 - Protection of Endangered Species

5.8.2 - Kirtland's warbler (2) (4/24)

This sale is adjacent to a young jack pine stand which is being used by Kirtland's Warbler. Due to the close proximity to occupied Kirtland's Warbler habitat, all operations are confined to August 16 through May 1 for this sale. Absolutely no operations will be allowed the remainder of the year.

5.8.5 - Protection of raptor nests (3/13)

All trees with raptor nests will be protected if found during harvesting operations. Notification will be made to the Unit Manager or his/her representative who will notify the Wildlife Biologist so an on-site evaluation and recommendation can be made, if necessary.

6 - Safety and Fire Prevention

6.2 - Signing

6.2.1 - Road posting (10/20)

The Purchaser is responsible for posting and maintaining caution signs on road used for hauling prior to beginning operations. The road must be posted at appropriate distances from the Sale Area to warn of logging activity and truck traffic. Signs must be removed when harvest operations are suspended or completed. The Purchaser will provide these signs.



TIMBER SALE MAP

This information provided by authority of Part 525, 1994 PA 451, as amended.

Sale Number
61-103-24

Date
11/21/2023

Forest Management Unit
Traverse City Mgt Unit

County
Kalkaska

Mapped By: Crigier
Cruised By: Crigier

Scale
1:15,840

Page
1

Of
1

Township
25N

Range
07W

Section(s) and
Subdivision(s) Sec. 24 SESW,SE;

Cover Type

A = Aspen	J = Jack Pine	O = Oak	U = Upland Brush
B = Paper Birch	K = Rock	P = Lowland Poplar	UM = Upland Mix Forest
C = Cedar	L = Lowland Brush	Q = Mixed Swamp Conifer	V = Bog or Marsh
D = Treed Bog	LM = Lowland Mix Forest	R = Red Pine	W = White Pine
E = Swamp Hardwoods	M = Maple, Beech, Birch	S = Black Spruce	X = Non Stocked
F = Spruce/Fir	MC = Mixed Conifer	T = Tamarack	Y = Sand
G = Grass	MD = Mixed Deciduous	Z = Water	
H = Hemlock	N = Marsh		

Density

0 = Non Stocked	5 = Pole Timber Medium
1 = Seedling Sapling Poor	6 = Pole Timber Well
2 = Seedling Sapling Medium	7 = Saw Timber Poor
3 = Seedling Sapling Well	8 = Saw Timber Medium
4 = Pole Timber Poor	9 = Saw Timber Well

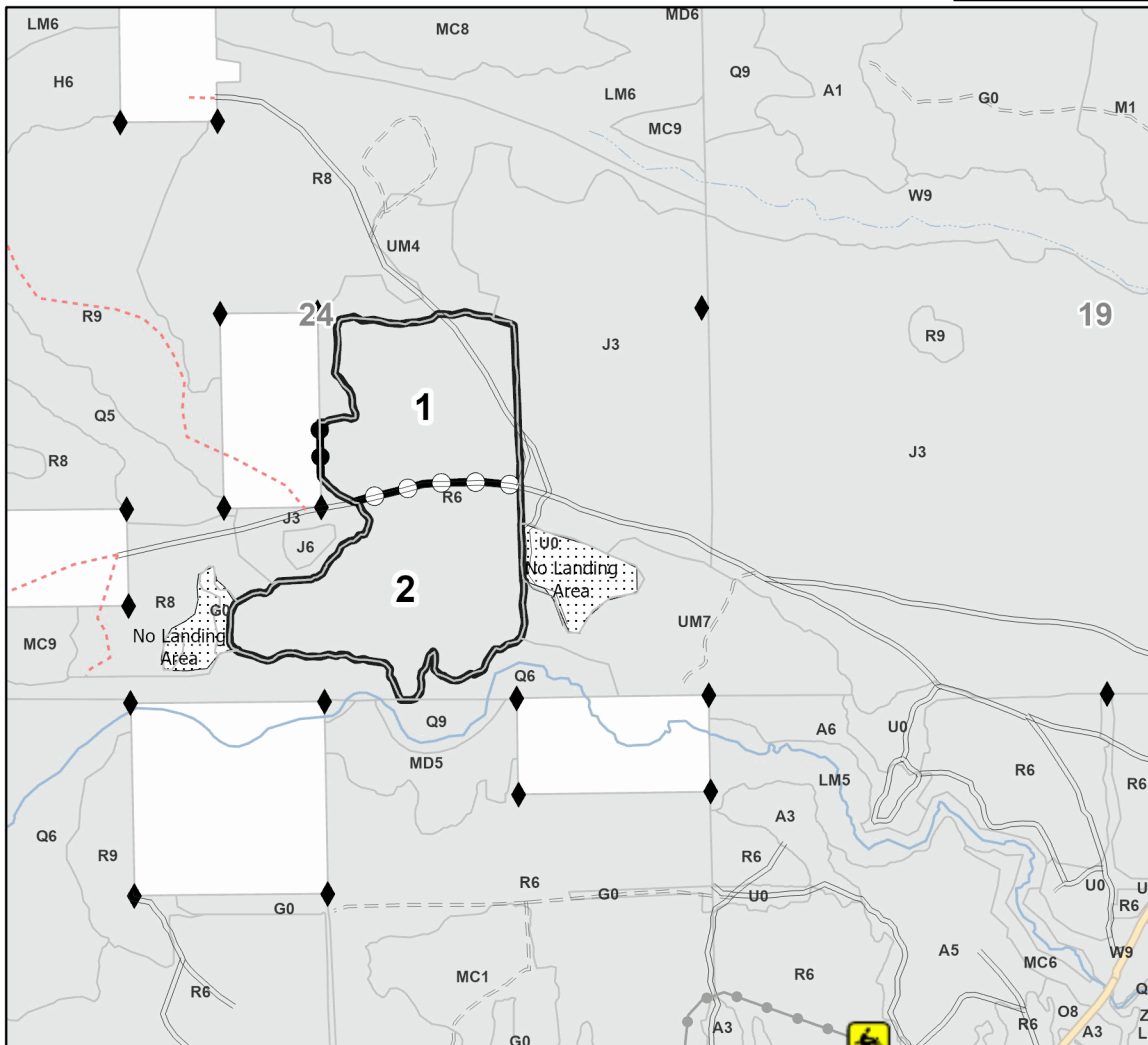
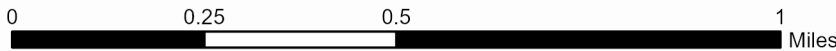
Locator Map (1:200,000)



Farewell Miggy Red Pine

76.6 Acres

PU	Acres
1	33.6
2	43



Legend

- Against State (Red)
- Payment Unit (Yellow)
- Private Line (Blue)
- Stand
- State Forests
- WLD Opening (no landing area)
- Recreational Trail
- Secondary Forest Road
- Forest Access Route
- Administrative Access Only
- Non-DNR Road
- Survey Corner
- Rivers
- Streams

Use QR Code to open Map in App

