



**DEPARTMENT OF NATURAL RESOURCES
STATE OF MICHIGAN
TIMBER SALE PROSPECTUS #7493**

SCHEDULED SALE DATE AND TIME: 10:00 a.m. (local time) on October 7, 2024.

LOCATION: SAULT DNR CUSTOMER SERVICE CENTER, 4131 S. M-129, SAULT STE MARIE, MI 49783.

CONTACT NAME: Kenny Fanelli

PHONE NUMBER: (906) 287-1380

PROSPECTUS NOTE: The bidder is advised to inspect the sale area and review the location, estimated volumes, operating costs and contract terms of proposed sales. Please be aware that some landowners may request 60 days or more notice for access across their land.

Notice is hereby given that bids will be received by the Unit Manager, SAULT STE MARIE MANAGEMENT UNIT, for certain timber on the following described lands:

DI Drumming on Drummond (45-005-24) / T42N, R06E, SEC. 1 , NW,NWNE,S1/2NE,W1/2SW.

T42N, R06E, SEC. 10, SENE,SE.

T42N, R06E, SEC. 11, E1/2NE.

T42N, R06E, SEC. 12, NWNW,N1/2SW,SESW,NWSE.

T42N, R06E, SEC. 2 , SWNW,NENE,SW,SESE.

T42N, R06E, SEC. 3 , SENW,NWNE,S1/2NE,NWSE.

T42N, R07E, SEC. 5 , W1/2SW.

T42N, R07E, SEC. 6 , W1/2NW,E1/2SE.

T43N, R06E, SEC. 35, SWSE.

T43N, R06E, SEC. 36, S1/2SW.

T43N, R07E, SEC. 31, SWSW.

Chippewa County, Advertised Price \$46,222.85, 329.6 Acres, Aspen, Spruce/Fir/Tamarack.

SALE NOTE: Sale located within the Drummond Island GEMS. Most of the sale will require frozen winter conditions.

A recreation site such as a trail, pathway, or campground is within the sale area or the vicinity. Certain restrictions/specifications may be applicable including time restrictions.

TIMBER SALE INFORMATION

DI Drumming on Drummond (45-005-24)

T42N, R06E, SEC. 1; T42N, R06E, SEC. 10; T42N, R06E, SEC. 11; T42N, R06E, SEC. 12; T42N, R06E, SEC. 2; T42N, R06E, SEC. 3;
T42N, R07E, SEC. 5; T42N, R07E, SEC. 6; T43N, R06E, SEC. 35; T43N, R06E, SEC. 36; T43N, R07E, SEC. 31.

SALE NOTE: Sale located within the Drummond Island GEMS. Most of the sale will require frozen winter conditions.

A recreation site such as a trail, pathway, or campground is within the sale area or the vicinity. Certain restrictions/specifications may be applicable including time restrictions.

A timber sale contract for this lump sum, sealed bid timber sale will be awarded to the responsible bidder offering the highest sealed bid price. All units of volume listed below were estimated using the Inventory Manager computer program and the new Michigan taper model. Bids must be at or above the following advertised price for each product and species:

<u>PRODUCTS & SPECIES</u>	<u>ESTIMATED UNITS*</u>	<u>ADVERTISED PRICE</u>
Sawtimber		
Basswood	2.1 MBF	\$ 65.00 / MBF
Paper Birch	2.1 MBF	\$ 81.00 / MBF
Red Maple	2.1 MBF	\$ 106.00 / MBF
Sugar Maple	3.2 MBF	\$ 117.00 / MBF
Pulpwood		
Balsam Fir	602 Cords	\$ 9.70 / Cord
Mixed Aspen	5,229 Cords	\$ 5.25 / Cord
Mixed Hardwood	299 Cords	\$ 3.10 / Cord
Mixed Spruce	746 Cords	\$ 11.45 / Cord
N. White Cedar	371 Cords	\$ 6.60 / Cord
Tamarack	48 Cords	\$ 2.30 / Cord

* The total volume is statistically estimated within plus (+) or minus (-) 7.65 percent. There are an estimated 7,327 cords on this timber sale, plus or minus 561 cords at the 95% confidence level. The estimated units are final and not subject to adjustment. Prospective bidders are urged to examine this timber and to make their own estimates of quantity and quality.

BOND AND PAYMENT SCHEDULE:

1. A bond in the amount of \$3,697.83 to insure faithful performance of the conditions of the contract will be deposited by the successful bidder within 21 days of the sale award.
2. Cutting in any sale or unit without the required advance payment would be considered a trespass.
3. Total payment must be paid in advance or according to the following schedule :
 - (a) Ten percent (10%) of the sale value must be paid within 21 days of the sale award.
 - (b) The 10% down payment will be credited towards the first unit cut.
 - (c) Payment for each of the following units must be made before cutting begins in that unit:

PAYMENT UNIT NUMBER	PERCENT OF TOTAL SALE VALUE
01	3.0%
02	3.3%
03	7.3%
04	4.7%
05	8.7%
06	2.1%
07	15.8%
08	6.0%
09	2.9%
10	11.8%
11	5.2%
12	14.1%
13	15.1%

4. If no cutting takes place, the 10% down payment will not be refunded.
5. Operations on the contract issued will terminate on 06/30/2028.

SALE STATISTICS

Volumes were calculated in cubic feet using the Michigan taper model. Cubic foot volume includes all wood inside bark for the product indicated. For display purposes, cubic feet were converted to cords and MBF using a simple conversion factor, e.g. 79 cubic feet per cord and 185 cubic feet per MBF. The cubic foot volumes are precise; the cords and MBF volumes are not. Cubic foot volume cannot be directly converted to cords or boards with precision.

SALE VOLUMES

The total estimated sale volume may not equal the sum of the species/products due to the nature of statistical calculations associated with double sampling methodology.

VOLUME			STATISTICAL RANGE IN CORDS	
TOTAL CUBIC FEET	TOTAL CORDS	PERCENT ERROR	MINIMUM	MAXIMUM
578,800	7,327	7.65%	6,766	7,888

VDU VOLUMES

A VDU is a Volume Determination Unit. Volumes and their associated statistics are calculated at the VDU level and summarized to the sale level. There is often a one to one relationship between a VDU and a Payment Unit, but not always, depending on the cruise design. Refer to the VDU TO PAYMENT UNIT table.

VDU	VOLUME		PERCENT ERROR	RANGE IN CORDS	
	TOTAL CUBIC FEET	TOTAL CORDS		MINIMUM	MAXIMUM
2	76,150	964	21.68%	755	1,173
26	87,988	1,114	22.25%	866	1,362
32	89,758	1,136	19.20%	918	1,354
39	31,657	401	26.76%	294	508
44	81,448	1,031	20.92%	815	1,247
54	14,122	179	42.06%	104	254
59	79,295	1,004	21.21%	791	1,217
84	48,710	617	27.68%	446	787
87	38,657	489	23.13%	376	603
129	15,583	197	45.82%	107	288
131	15,431	195	57.98%	82	309
TOTAL:	578,800	7,327		5,553	9,100

VDU TO PAYMENT UNIT

When a VDU is associated with more than one Payment Unit (PU), the VDU volumes are assigned to the PU based on acres of the VDU within the PU.

VDU	VDU ACRES	PU	PU ACRES
2	43.8	1	9.7
		5	28.0
		8	6.1
26	31.9	12	31.9
32	58.4	7	58.4
39	26.1	11	26.1
44	39.0	13	39.0
54	9.6	6	9.6
59	32.0	8	4.7
		10	27.3
84	34.4	2	14.1
		4	20.3
87	33.9	3	33.9
129	8.9	8	8.9
131	11.6	9	11.6
TOTAL:	329.6		329.6

DESCRIPTION OF TIMBER BY PU (PU)

PU	MARKET GROUP	PRODUCT	QUANTITY	UNIT	ACRES	ADVERTISE PRICE
1	Sugar Maple	Sawtimber	0.7	MBF	9.7	\$1,386.95
	Balsam Fir	Pulpwood	25	Cords		
	Mixed Aspen		160	Cords		
	<i>B. T. Aspen</i>		4	Cords		
	<i>Balsam Poplar</i>		24	Cords		
	<i>Quaking Aspen</i>		132	Cords		
	Mixed Hardwood		9	Cords		
	<i>Black Ash</i>	Sawtimber	0.1	MBF		
	<i>American Elm</i>	Pulpwood	2	Cords		
	<i>Black Ash</i>		4	Cords		
	<i>Ironwood</i>		1	Cords		
	<i>Paper Birch</i>		2	Cords		
	Mixed Spruce		17	Cords		
	<i>White Spruce</i>		17	Cords		
	2	Balsam Fir	Pulpwood	16		
Mixed Aspen			211	Cords		
<i>Balsam Poplar</i>			9	Cords		
<i>Quaking Aspen</i>			202	Cords		
Mixed Hardwood			5	Cords		
<i>Black Ash</i>			2	Cords		
<i>White Ash</i>			3	Cords		
Mixed Spruce			21	Cords		
<i>White Spruce</i>			21	Cords		
3		Balsam Fir	Pulpwood	39	Cords	33.9
	Mixed Aspen		339	Cords		
	<i>Balsam Poplar</i>		59	Cords		
	<i>Quaking Aspen</i>		280	Cords		
	Mixed Hardwood		6	Cords		
	<i>American Elm</i>		3	Cords		
	<i>White Ash</i>		3	Cords		
	Mixed Spruce		104	Cords		
	<i>White Spruce</i>		104	Cords		
4	Balsam Fir	Pulpwood	22	Cords	20.3	\$2,186.05
	Mixed Aspen		304	Cords		
	<i>Balsam Poplar</i>		14	Cords		
	<i>Quaking Aspen</i>		290	Cords		
	Mixed Hardwood		7	Cords		
	<i>Black Ash</i>		3	Cords		
	<i>White Ash</i>		4	Cords		
	Mixed Spruce		31	Cords		
	<i>White Spruce</i>		31	Cords		
5	Sugar Maple	Sawtimber	2.1	MBF	28.0	\$4,044.25
	Balsam Fir	Pulpwood	74	Cords		
	Mixed Aspen		462	Cords		
	<i>B. T. Aspen</i>		13	Cords		
	<i>Balsam Poplar</i>		69	Cords		
	<i>Quaking Aspen</i>		380	Cords		
	Mixed Hardwood		23	Cords		
	<i>Black Ash</i>	Sawtimber	0.4	MBF		
	<i>American Elm</i>	Pulpwood	5	Cords		
	<i>Black Ash</i>		10	Cords		
	<i>Ironwood</i>		2	Cords		
	<i>Paper Birch</i>		4	Cords		
	<i>Sugar Maple</i>		1	Cords		
	Mixed Spruce		51	Cords		

DESCRIPTION OF TIMBER BY PU (PU), CON'T

PU	MARKET GROUP	PRODUCT	QUANTITY	UNIT	ACRES	ADVERTISE PRICE
5 con't	<i>White Spruce</i>	<i>Pulpwood</i>	51	<i>Cords</i>		
6	Balsam Fir Mixed Aspen <i>Balsam Poplar</i> <i>Quaking Aspen</i> Mixed Spruce <i>White Spruce</i>	Pulpwood	3 172 13 159 3 3	Cords Cords <i>Cords</i> <i>Cords</i> Cords <i>Cords</i>	9.6	\$966.45
7	Balsam Fir Mixed Aspen <i>B. T. Aspen</i> <i>Balsam Poplar</i> <i>Quaking Aspen</i> Mixed Hardwood <i>Black Ash</i> Mixed Spruce <i>Black Spruce</i> <i>White Spruce</i>	Pulpwood	105 885 46 16 823 7 7 139 5 134	Cords Cords <i>Cords</i> <i>Cords</i> <i>Cords</i> Cords <i>Cords</i> Cords <i>Cords</i> <i>Cords</i>	58.4	\$7,278.00
8	Paper Birch Sugar Maple Balsam Fir Mixed Aspen <i>B. T. Aspen</i> <i>Balsam Poplar</i> <i>Quaking Aspen</i> Mixed Hardwood <i>Black Ash</i> <i>American Elm</i> <i>Black Ash</i> <i>Paper Birch</i> Mixed Spruce <i>White Spruce</i> Tamarack	Sawtimber Pulpwood <i>Sawtimber</i> <i>Pulpwood</i>	0.3 0.4 46 312 3 54 255 41 0.1 6 33 2 34 34 43	MBF MBF Cords Cords <i>Cords</i> <i>Cords</i> <i>Cords</i> Cords <i>MBF</i> <i>Cords</i> <i>Cords</i> <i>Cords</i> Cords <i>Cords</i> Cords	19.7	\$2,770.60
9	Balsam Fir Mixed Aspen <i>Quaking Aspen</i> Mixed Hardwood <i>Black Ash</i> <i>Black Ash</i> Mixed Spruce <i>White Spruce</i> Tamarack	Pulpwood <i>Sawtimber</i> <i>Pulpwood</i>	18 121 121 4 1.2 2 46 46 5	Cords Cords <i>Cords</i> Cords <i>MBF</i> <i>Cords</i> Cords <i>Cords</i> Cords	11.6	\$1,360.45
10	Paper Birch Balsam Fir Mixed Aspen <i>Quaking Aspen</i> Mixed Hardwood <i>American Elm</i> <i>Paper Birch</i> Mixed Spruce <i>White Spruce</i>	Sawtimber Pulpwood	1.8 109 671 671 9 6 3 63 63	MBF Cords Cords <i>Cords</i> Cords <i>Cords</i> <i>Cords</i> Cords <i>Cords</i>	27.3	\$5,475.10
11	Balsam Fir Mixed Aspen <i>Balsam Poplar</i> <i>Quaking Aspen</i> Mixed Hardwood	Pulpwood	18 329 253 76 12	Cords Cords <i>Cords</i> <i>Cords</i> Cords	26.1	\$2,397.05

DESCRIPTION OF TIMBER BY PU (PU), CON'T

PU	MARKET GROUP	PRODUCT	QUANTITY	UNIT	ACRES	ADVERTISE PRICE
11 con't	<i>Black Ash</i>	<i>Pulpwood</i>	8	<i>Cords</i>		
	<i>Red Maple</i>		4	<i>Cords</i>		
	Mixed Spruce		40	Cords		
	<i>White Spruce</i>		40	<i>Cords</i>		
12	Basswood	Sawtimber	2.1	MBF	31.9	\$6,498.60
	Balsam Fir	Pulpwood	62	Cords		
	Mixed Aspen		839	Cords		
	<i>Balsam Poplar</i>		5	<i>Cords</i>		
	<i>Quaking Aspen</i>		834	<i>Cords</i>		
	Mixed Hardwood		45	Cords		
	<i>Basswood</i>		18	<i>Cords</i>		
	<i>Green Ash</i>		4	<i>Cords</i>		
	<i>Ironwood</i>		5	<i>Cords</i>		
	<i>Sugar Maple</i>		18	<i>Cords</i>		
	Mixed Spruce		29	Cords		
	<i>White Spruce</i>		29	<i>Cords</i>		
	N. White Cedar		134	Cords		
	13	Red Maple	Sawtimber	2.1		
Balsam Fir		Pulpwood	65	Cords		
Mixed Aspen			424	Cords		
<i>Balsam Poplar</i>			121	<i>Cords</i>		
<i>Quaking Aspen</i>			303	<i>Cords</i>		
Mixed Hardwood			131	Cords		
<i>Black Ash</i>			23	<i>Cords</i>		
<i>Green Ash</i>			50	<i>Cords</i>		
<i>Paper Birch</i>			4	<i>Cords</i>		
<i>Red Maple</i>			54	<i>Cords</i>		
Mixed Spruce			168	Cords		
<i>Black Spruce</i>			3	<i>Cords</i>		
<i>White Spruce</i>			165	<i>Cords</i>		
N. White Cedar			237	Cords		
TOTAL:			9.5	MBF		
TOTAL:			7,295	Cords		

Sale Specific Conditions & Requirements

Sale Name: DI Drumming on Drummond

Sale Number: 45-005-24 Seq#: 1

1 - Sale Area

1.2 - Boundaries

1.2.1 - Painted boundaries (9/19)

The sale boundary is marked and identified by blue and red paint. Exterior sale boundary lines against private property are marked with blue paint. Exterior sale boundary lines against state are marked with red paint. Retention patches are marked with red paint; no harvesting activities may occur within these areas. The painted boundary line trees are not Included Timber and are to be protected.

2 - Timber Specifications

2.1 - Included Timber

2.1.1 - Clearcut unit(s) with unmerchantable trees (6/14)

Within Payment Unit(s) 3, 4, 6 & 8-11, cut all trees that are two (2) inches or more at DBH, except do not cut cedar, oak, hemlock, pine, and yellow birch.

Within Payment Unit(s) 1, 2, 5 & 7, cut all deciduous trees that are two (2) inches or more at DBH. In addition, cut all conifer trees that are four (4) inches or more at DBH, except do not cut cedar, oak, pine, yellow birch, & hemlock. Furthermore, within Payment Unit 5, leave one healthy representative tree every 75 feet.

Within Payment Unit(s) 12 & 13, cut all deciduous trees that are two (2) inches or more at DBH. In addition, cut all conifer trees that are four (4) inches or more at DBH, except do not cut white pine.

Special protection areas identified in accordance with condition 3.4.3, within clearcutting unit boundaries, are not Included Timber and are to be protected.

2.1.15 - Hazard trees near roads (11/20)

Cut and remove all standing dead trees within 50 feet of the cleared portion of South Maxton Road. These trees must be scattered back into the Sale Area.

3 - Payments

3.3 - Pre-measured Sales

3.3.4 - Dividing payment units (7/14)

Payment Unit(s) 1-13, may be divided at the request of the Purchaser and upon approval of the Unit Manager. Dividing Payment Units is a contract modification which requires a Timber Sale Contract Amendment. There will be only one division per Payment Unit.

3.4 - Damaged Timber

3.4.3 - Special Protection Areas (8/11)

The Purchaser shall protect special protection areas from damage by the Purchaser's operations. Special protection areas are alvar, designated on the Timber Sale Map as 'G0' and 'F1'. The Purchaser shall not operate machinery within the special protection areas. The Purchaser shall not deck wood or use the openings as landings.

4 - Transportation

4.1 - Construction

4.1.3 - Slash and earthen piles (8/04)

Piles or windrows of earth along roads and landings that have been widened or constructed shall be leveled. Slash from road maintenance or construction, including stumps, shall be dispersed throughout the sale.

4.1.6 - Road construction (1/09)

Construction of new roads or improvements of existing roads shall be done in such a way as to minimize the environmental and visual impacts. Merchantable trees shall be cut and utilized unless otherwise directed. Non-merchantable trees shall be severed and laid flat on the ground. Slash shall be scattered, and not left in windrows and kept a minimum of 10 feet back from the road edge. Stumps shall be set upright, not left on edge, and be moved at least 10 feet away from the road edge. Disturbed soil shall be feathered into the woods and not left in berms or windrows.

4.1.7 - Road closure (10/11)

All new roads built into the sale must be blocked to vehicle traffic upon completion of the sale. Overgrown roads that are reopened shall be considered new roads. In general, this will require constructing double earthen berms at strategic locations. Stumps and brush must be placed along the remainder of the trail. These roads must be rendered impassable to cars and trucks. All stumps from road building and landing construction must be reserved to block any newly constructed roads upon completion of the sale. These stumps must be scattered along the road system to prohibit vehicular movement. Temporary berms may be required if no sale activity occurs for 30 or more consecutive days. Contact the Sale Administrator for specific details of design and placement.

4.2 - Maintenance

4.2.1 - Hauling restriction (12/08)

Hauling may be restricted on forest roads by the Unit Manager or his/her representative. The restriction may occur during wet weather conditions.

4.2.2 - Fill material (4/07)

To maintain roads, fill material may be needed in areas where "holes" exist or may be expected to develop. This fill material should be placed before trucking begins. Contact the Sale Administrator regarding the availability of onsite sand or gravel from adjacent State-owned lands.

4.2.4 - Grading (10/16)

For completion of the sale, state forest roads must be graded. In general, this will require a road grader or bulldozer to shape up the roads after forest products have been hauled off site. This includes cleaning of drainage areas, grading, crowning and filling with gravel, if necessary. The grading equipment to be used must be approved by the Unit Manager or his/her representative.

4.2.5 - Two wheel drive condition (2/04)

All existing trail roads on and adjacent to the sale area must be passable by two-wheel drive traffic for the duration of the sale.

4.4 - Access

4.4.3 - Access gate (12/08)

The access gate must be locked at all times. This is to prevent someone other than the Purchaser from going through the gate and being locked in.

5 - Operations

5.2 - Conduct of Operations

5.2.1 - Slash

5.2.1.8 - Slash height (12/08)

No slash or tree tops may exceed 24 inches in height. Except in piles designated for hare and grouse habitat within Payment Units 3, 5, 10 & 12 (see spec 5.2.4.2).

5.2.2 - Hazard Trees/Snags

5.2.2.1 - Den trees (10/16)

Obvious hollow and/or den trees shall be protected and left standing unless they are a safety hazard.

5.2.3 - Operating Restrictions

5.2.3.2 - Operating restrictions (9/11)

Within Payment Unit(s) 3, 4, 7-10 & 12, unless changed by written agreement, cutting, skidding, and hauling are not permitted during the period of September 15 to January 1. This restriction is in place to provide safe and undisturbed access for hunters within the GEMS.

5.2.4 - Dead and Down Creation

5.2.4.2 - Dead and down creation, hare and grouse (1/14)

To improve habitat for snowshoe hare, grouse, and other species, the Purchaser is to leave one pile of slash on the ground for every two acres within Payment Units 3, 5, 10 & 12. They should be scattered throughout the sale or positioned per the Sale Administrator's instructions. These piles should be approximately six feet high and twelve feet in diameter.

5.2.4.3 - Dead and down creation, dead trees (6/07)

Except as provided for in General Condition and Requirement 5.2.2, no dead trees, standing or down, are to be cut, skidded, or processed. There is an exception in Payment Unit 1, where dead trees can be cut along South Maxton Road (see spec 2.1.15).

5.2.22 - Operating Caution

5.2.22.1 - Operating caution (6/11)

It is recommended, but not required, that within Payment Unit(s) 2-13, cutting, skidding, and hauling occur during dry summer or frozen winter conditions. The reason for the recommendation is because wet ground conditions.

5.2.32 - Decking/landing restoration (9/13)

All decking and landing areas must have the surface area restored to a condition equal to or better than before. This is to ensure the proper regeneration of the stand. Wood debris, chips and "cookies" from trimmings must be removed or scattered away from landing and loading areas and may not be windrowed on the edge.

5.2.37 - No decking areas (12/08)

No decking is allowed within 50 feet of South Maxton Road or East Colton Bay Road without permission of the county road commission.

5.2.38 - No decking against live trees (2/04)

Cut products may not be decked against unmarked or designated leave trees.

5.2.41 - Snowmobile trail protection (9/11)

The snowmobile trail is shown on the Timber Sale Map. Do not cut or damage posts with orange trail markers or traffic control signs. If the trail is used, it must be maintained and restored to a condition equal to or better than before the sale. The road maintenance/restoration must be done prior to December 1. If the trail is used for hauling, it must be graded to the satisfaction of the Unit Manager or his/her representative prior to December 1. If the trail road is to be used for hauling during the snowmobile season, then a snow-covered base must be left on the trail. The snowmobile trail may only be crossed at right angles. Maintain a 20-foot-wide slash, debris, and rut free zone daily using the snowmobile trail as the centerline. No decking of forest products will be permitted along the snowmobile trail during snowmobile season (approximately December 1 to March 31). All stumps within 5 feet of the snowmobile trail must be cut at ground level.

5.8 - Protection of Endangered Species

5.8.5 - Protection of raptor nests (3/13)

All trees with raptor nests will be protected if found during harvesting operations. Notification will be made to the Unit Manager or his/her representative who will notify the Wildlife Biologist so an on-site evaluation and recommendation can be made, if necessary.

6 - Safety and Fire Prevention

6.2 - Signing

6.2.1 - Road posting (10/20)

The Purchaser is responsible for posting and maintaining caution signs on South Maxton Road and East Colton Bay Road prior to beginning operations. The road must be posted at appropriate distances from the Sale Area to warn of logging activity and truck traffic. Signs must be removed when harvest operations are suspended or completed. The Purchaser will provide these signs.

6.2.2 - Snowmobile trail posting (10/20)

The Purchaser is responsible for posting and maintaining caution signs on the snowmobile trail prior to beginning operations during the snowmobile season (approximately December 1 to March 31). The trail must be posted at appropriate distances from the Sale Area to warn of logging activity and truck traffic. Signs must be removed when harvest operations are suspended or completed. The Purchaser will provide these signs.



TIMBER SALE MAP

This information provided by authority of Part 525, 1994 PA 451, as amended.

Sale Number 45-005-24	Date 08/26/2024	
Scale 1:15,840	Page 1	Of 6

Forest Management Unit Sault Ste Marie Mgt Unit	County Chippewa	Mapped By: Contractor/Sault Unit
		Cruised By: Contractor/Sault Unit

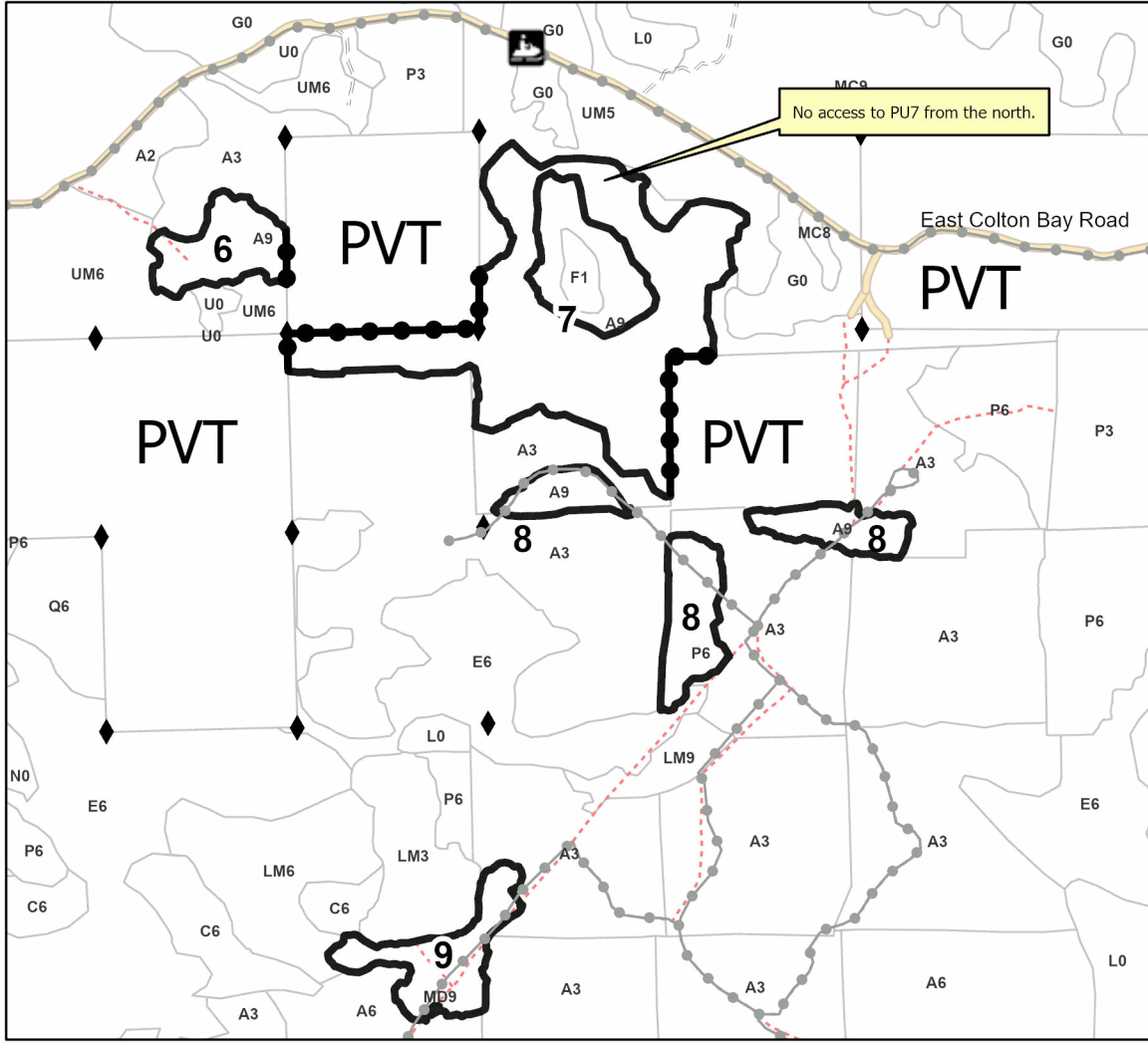
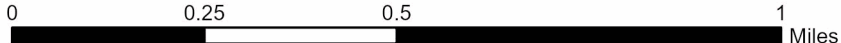
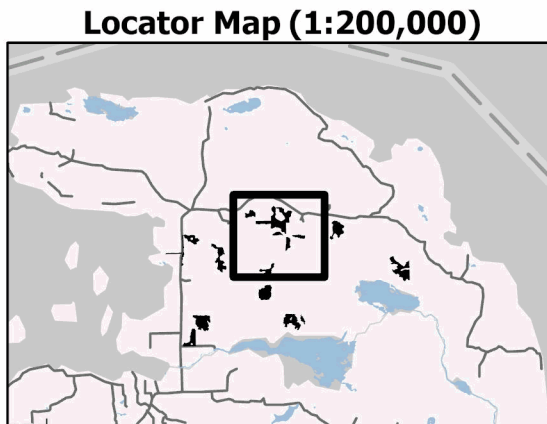
Township 42N / 43N	Range 06E / 07E	Section(s) and Subdivision(s) Sec. 6 W1/2NW,E1/2SE; SWNW,NENE,SW,SESE; Sec. 3 SENW,NWNE,S1/2NE,NWSE; Sec. 31 SWSW; Sec. 35 SWSE; Sec. 36 S1/2SW; Sec. 5 W1/2SW; Sec. 1 NW,NWNE,S1/2NE,W1/2SW; Sec. 10 SENE,SE; Sec. 11 E1/2NE; Sec. 12 NWNW,N1/2SW,SESW,NWSE; Sec. 2
------------------------------	---------------------------	---

Cover Type			
A = Aspen	J = Jack Pine	O = Oak	U = Upland Brush
B = Paper Birch	K = Rock	P = Lowland Poplar	UM = Upland Mix Forest
C = Cedar	L = Lowland Brush	Q = Mixed Swamp Conifer	V = Bog or Marsh
D = Treed Bog	LM = Lowland Mix Forest	R = Red Pine	W = White Pine
E = Swamp Hardwoods	M = Maple, Beech, Birch	S = Black Spruce	X = Non Stocked
F = Spruce/Fir	MC = Mixed Conifer	T = Tamarack	Y = Sand
G = Grass	MD = Mixed Deciduous	Z = Water	
H = Hemlock	N = Marsh		

Density	
0 = Non Stocked	5 = Pole Timber Medium
1 = Seedling Sapling Poor	6 = Pole Timber Well
2 = Seedling Sapling Medium	7 = Saw Timber Poor
3 = Seedling Sapling Well	8 = Saw Timber Medium
4 = Pole Timber Poor	9 = Saw Timber Well

PU #	Acres	PU #	Acres	PU #	Acres
1	9.7	6	9.6	11	26.1
2	14.1	7	58.4	12	31.9
3	33.9	8	19.7	13	39
4	20.3	9	11.6		
5	28	10	27.3		

DI Drumming on Drummond
329.6 Acres



Legend	
	Against State (Red)
	Stand
	Private Line (Blue)
	Recreational Trail
	Forest Access Route
	Administrative Access Only
	Non-DNR Road
	Survey Grade Corner

Use QR Code to open Map in App





TIMBER SALE MAP

This information provided by authority of Part 525, 1994 PA 451, as amended.

Sale Number 45-005-24	Date 08/26/2024	
Scale 1:15,840	Page 2	Of 6

Forest Management Unit Sault Ste Marie Mgt Unit	County Chippewa	Mapped By: Contractor/Sault Unit
		Cruised By: Contractor/Sault Unit

Township 42N / 43N	Range 06E / 07E	Section(s) and Subdivision(s) Sec. 6 W1/2NW,E1/2SE; SWNW,NENE,SW,SESE; Sec. 3 SENW,NWNE,S1/2NE,NWSE; Sec. 31 SWSW; Sec. 35 SWSE; Sec. 36 S1/2SW; Sec. 5 W1/2SW; Sec. 1 NW,NWNE,S1/2NE,W1/2SW; Sec. 10 SENE,SE; Sec. 11 E1/2NE; Sec. 12 NWNW,N1/2SW,SESW,NWSE; Sec. 2
------------------------------	---------------------------	---

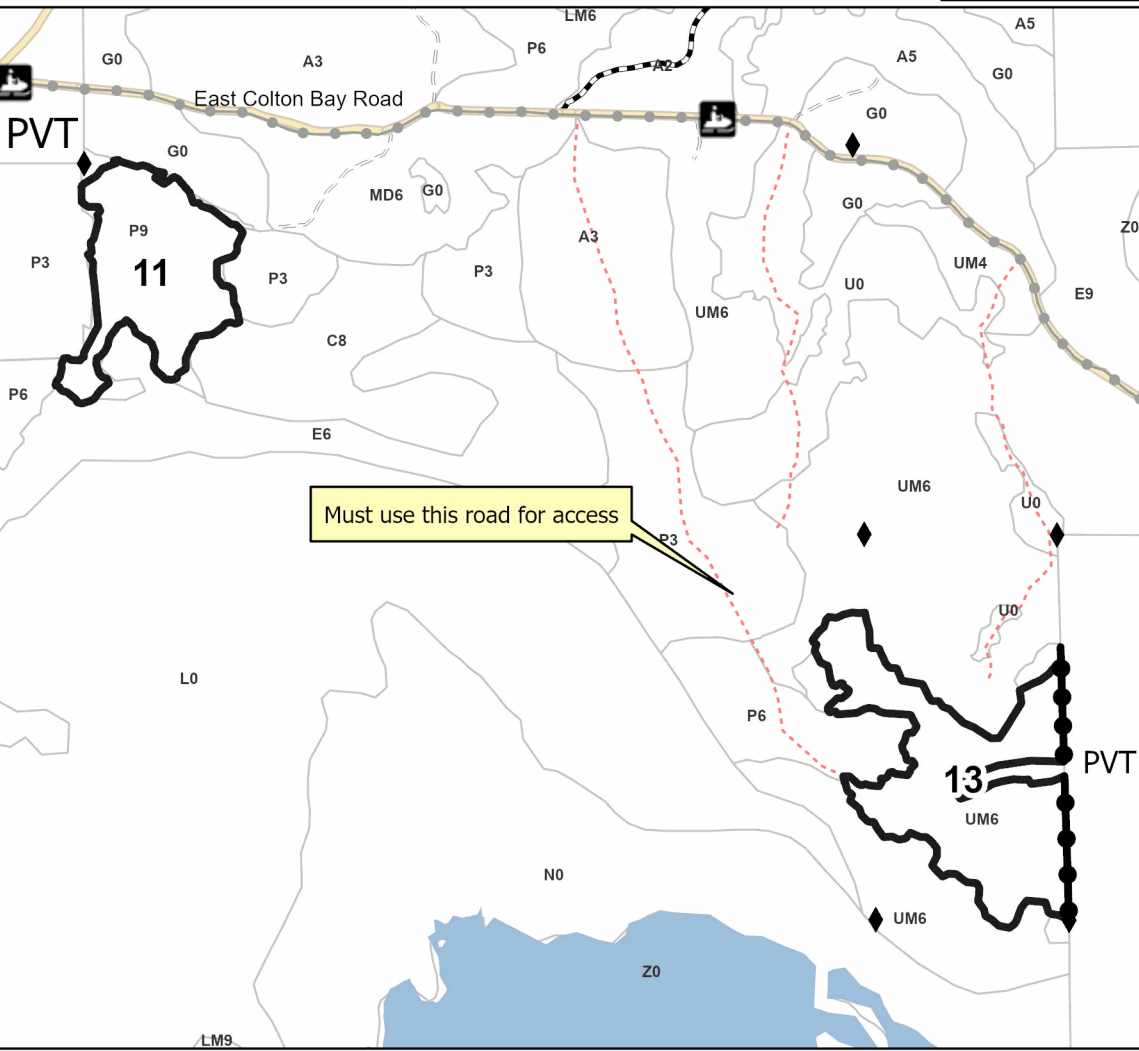
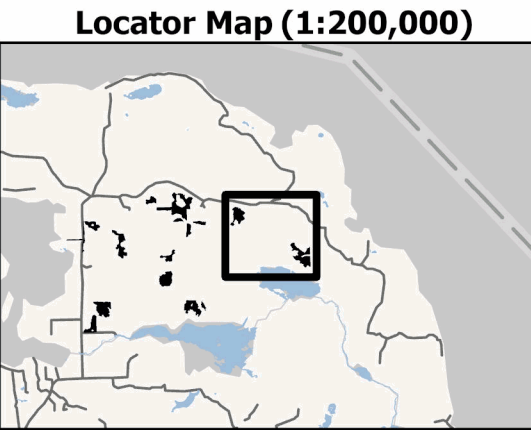
Cover Type			
A = Aspen	J = Jack Pine	O = Oak	U = Upland Brush
B = Paper Birch	K = Rock	P = Lowland Poplar	UM = Upland Mix Forest
C = Cedar	L = Lowland Brush	Q = Mixed Swamp Conifer	V = Bog or Marsh
D = Treed Bog	LM = Lowland Mix Forest	R = Red Pine	W = White Pine
E = Swamp Hardwoods	M = Maple, Beech, Birch	S = Black Spruce	X = Non Stocked
F = Spruce/Fir	MC = Mixed Conifer	T = Tamarack	Y = Sand
G = Grass	MD = Mixed Deciduous		Z = Water
H = Hemlock	N = Marsh		

Density	
0 = Non Stocked	5 = Pole Timber Medium
1 = Seedling Sapling Poor	6 = Pole Timber Well
2 = Seedling Sapling Medium	7 = Saw Timber Poor
3 = Seedling Sapling Well	8 = Saw Timber Medium
4 = Pole Timber Poor	9 = Saw Timber Well

PU #	Acres	PU #	Acres	PU #	Acres
1	9.7	6	9.6	11	26.1
2	14.1	7	58.4	12	31.9
3	33.9	8	19.7	13	39
4	20.3	9	11.6		
5	28	10	27.3		

DI Drumming on Drummond

329.6 Acres



Legend

- Against State (Red)
- Stand
- Private Line (Blue)
- Recreational Trail
- Primary Forest Road
- Forest Access Route
- Administrative Access Only
- Non-DNR Road
- Survey Grade Corner

Use QR Code to open Map in App





TIMBER SALE MAP

This information provided by authority of Part 525, 1994 PA 451, as amended.

Sale Number 45-005-24	Date 08/26/2024	
Scale 1:10,000	Page 3	Of 6

Forest Management Unit Sault Ste Marie Mgt Unit	County Chippewa	Mapped By: Contractor/Sault Unit
		Cruised By: Contractor/Sault Unit

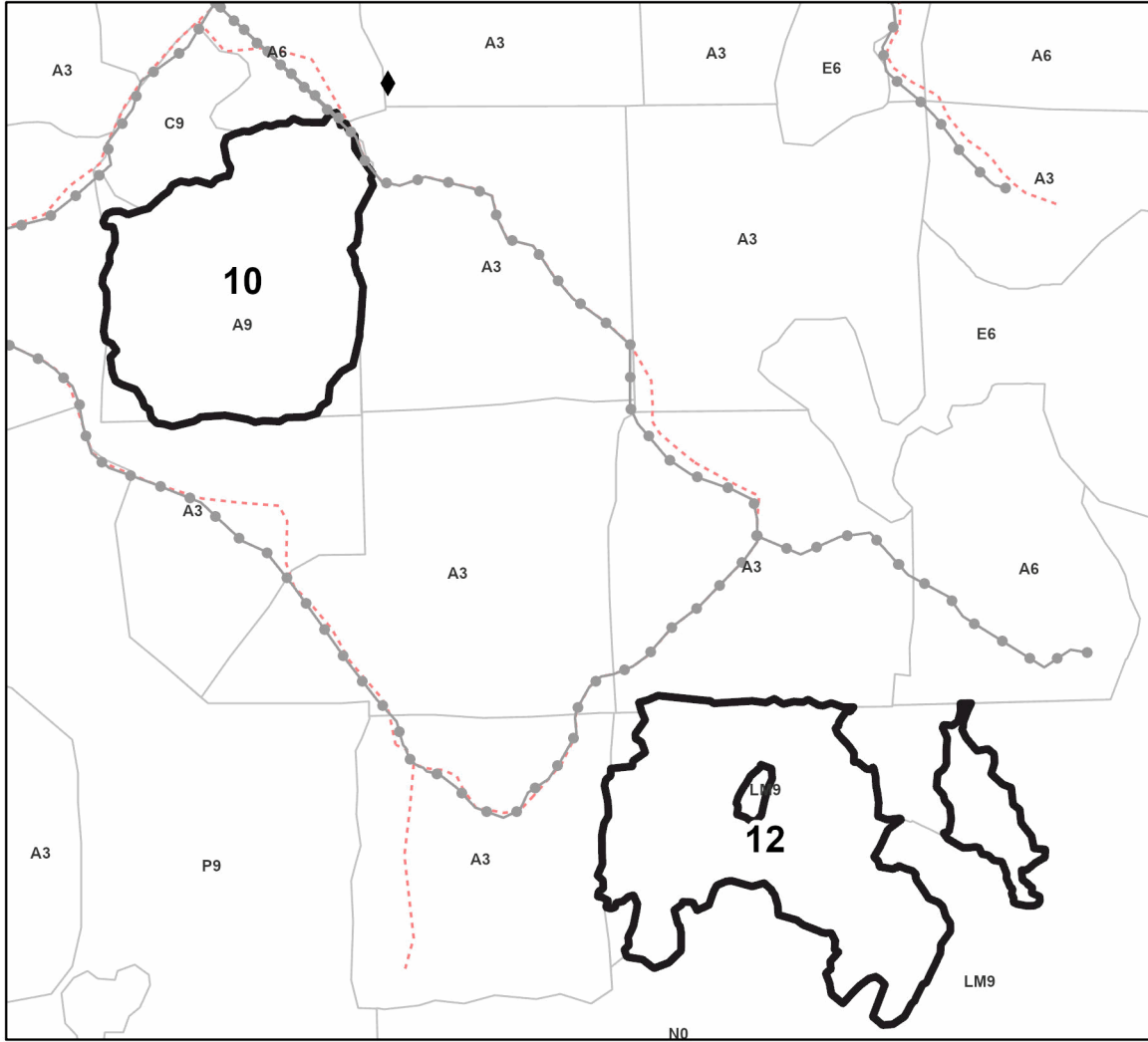
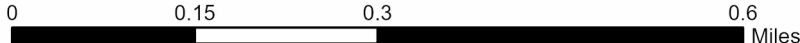
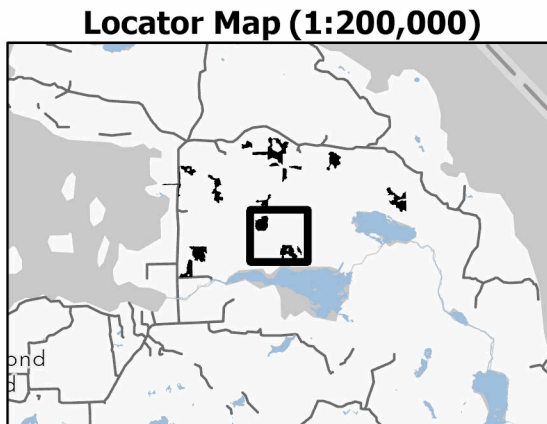
Township 42N / 43N	Range 06E / 07E	Section(s) and Subdivision(s) Sec. 6 W1/2NW,E1/2SE; SWNW,NENE,SW,SESE; Sec. 3 SENW,NWNE,S1/2NE,NWSE; Sec. 31 SWSW; Sec. 35 SWSE; Sec. 36 S1/2SW; Sec. 5 W1/2SW; Sec. 1 NW,NWNE,S1/2NE,W1/2SW; Sec. 10 SENE,SE; Sec. 11 E1/2NE; Sec. 12 NWNW,N1/2SW,SESW,NWSE; Sec. 2
------------------------------	---------------------------	---

Cover Type			
A = Aspen	J = Jack Pine	O = Oak	U = Upland Brush
B = Paper Birch	K = Rock	P = Lowland Poplar	UM = Upland Mix Forest
C = Cedar	L = Lowland Brush	Q = Mixed Swamp Conifer	V = Bog or Marsh
D = Treed Bog	LM = Lowland Mix Forest	R = Red Pine	W = White Pine
E = Swamp Hardwoods	M = Maple, Beech, Birch	S = Black Spruce	X = Non Stocked
F = Spruce/Fir	MC = Mixed Conifer	T = Tamarack	Y = Sand
G = Grass	MD = Mixed Deciduous		Z = Water
H = Hemlock	N = Marsh		

Density	
0 = Non Stocked	5 = Pole Timber Medium
1 = Seedling Sapling Poor	6 = Pole Timber Well
2 = Seedling Sapling Medium	7 = Saw Timber Poor
3 = Seedling Sapling Well	8 = Saw Timber Medium
4 = Pole Timber Poor	9 = Saw Timber Well

PU #	Acres	PU #	Acres	PU #	Acres
1	9.7	6	9.6	11	26.1
2	14.1	7	58.4	12	31.9
3	33.9	8	19.7	13	39
4	20.3	9	11.6		
5	28	10	27.3		

DI Drumming on Drummond
329.6 Acres



Legend

- Against State (Red)
- Stand
- Recreational Trail
- Administrative Access Only
- Survey Grade Corner

Use QR Code to open Map in App





TIMBER SALE MAP

This information provided by authority of Part 525, 1994 PA 451, as amended.

Sale Number	Date	
45-005-24	08/26/2024	
Scale	Page	Of
1:10,000	4	6

Forest Management Unit	County	Mapped By: Contractor/Sault Unit
Sault Ste Marie Mgt Unit	Chippewa	Cruised By: Contractor/Sault Unit

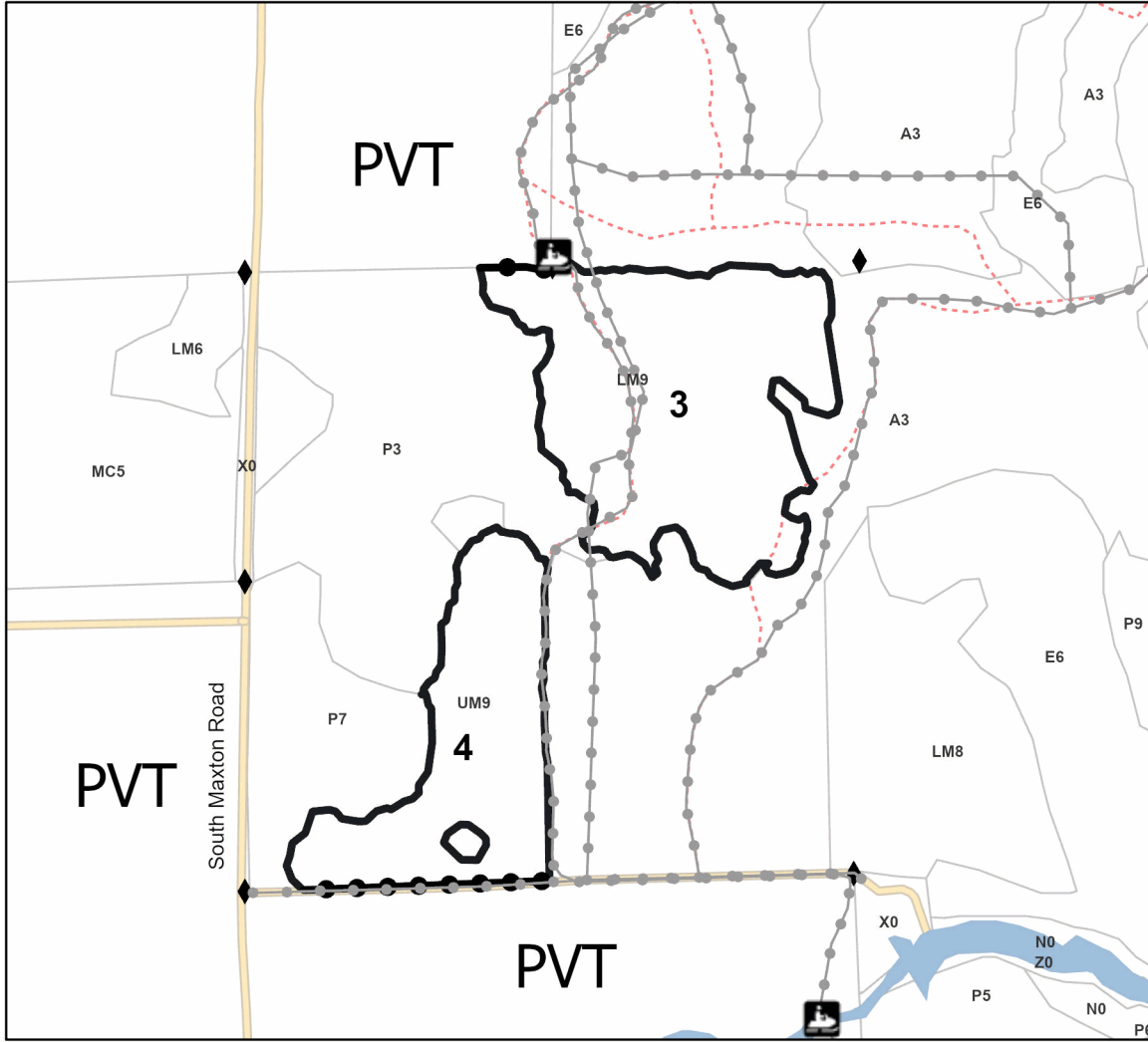
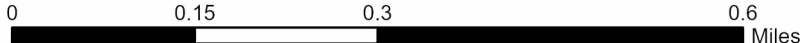
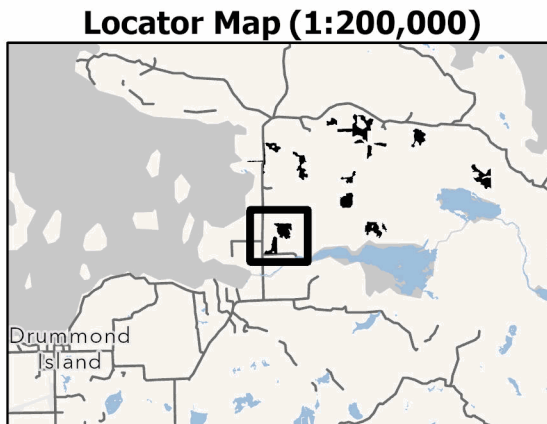
Township	Range	Section(s) and Subdivision(s)	Sec. 6 W1/2NW,E1/2SE; SWNW,NENE,SW,SESE; Sec. 3 SENW,NWNE,S1/2NE,NWSE; Sec. 31 SWSW; Sec. 35 SWSE; Sec. 36 S1/2SW; Sec. 5 W1/2SW; Sec. 1 NW,NWNE,S1/2NE,W1/2SW; Sec. 10 SENE,SE; Sec. 11 E1/2NE; Sec. 12 NWNW,N1/2SW,SES,W,NWSE; Sec. 2
42N / 43N	06E / 07E		

Cover Type			
A = Aspen	J = Jack Pine	O = Oak	U = Upland Brush
B = Paper Birch	K = Rock	P = Lowland Poplar	UM = Upland Mix Forest
C = Cedar	L = Lowland Brush	Q = Mixed Swamp Conifer	V = Bog or Marsh
D = Treed Bog	LM = Lowland Mix Forest	R = Red Pine	W = White Pine
E = Swamp Hardwoods	M = Maple, Beech, Birch	S = Black Spruce	X = Non Stocked
F = Spruce/Fir	MC = Mixed Conifer	T = Tamarack	Y = Sand
G = Grass	MD = Mixed Deciduous		Z = Water
H = Hemlock	N = Marsh		

Density	
0 = Non Stocked	5 = Pole Timber Medium
1 = Seedling Sapling Poor	6 = Pole Timber Well
2 = Seedling Sapling Medium	7 = Saw Timber Poor
3 = Seedling Sapling Well	8 = Saw Timber Medium
4 = Pole Timber Poor	9 = Saw Timber Well

PU #	Acres	PU #	Acres	PU #	Acres
1	9.7	6	9.6	11	26.1
2	14.1	7	58.4	12	31.9
3	33.9	8	19.7	13	39
4	20.3	9	11.6		
5	28	10	27.3		

DI Drumming on Drummond
329.6 Acres



Legend

- Against State (Red)
- Stand
- Private Line (Blue)
- Recreational Trail
- Administrative Access Only
- Non-DNR Road
- Survey Grade Corner

Use QR Code to open Map in App





TIMBER SALE MAP

This information provided by authority of Part 525, 1994 PA 451, as amended.

Sale Number
45-005-24

Date
08/26/2024

Forest Management Unit	County	Mapped By: Contractor/Sault Unit
Sault Ste Marie Mgt Unit	Chippewa	Cruised By: Contractor/Sault Unit

Scale	Page	Of
1:15,840	5	6

Township	Range	Section(s) and Subdivision(s)	Sec. 6 W1/2NW,E1/2SE; SWNW,NENE,SW,SESE; Sec. 3 SENW,NWNE,S1/2NE,NWSE; Sec. 31 SWSW; Sec. 35 SWSE; Sec. 36 S1/2SW; Sec. 5 W1/2SW; Sec. 1 NW,NWNE,S1/2NE,W1/2SW; Sec. 10 SENE,SE; Sec. 11 E1/2NE; Sec. 12 NWNW,N1/2SW,SES,W,NWSE; Sec. 2
42N / 43N	06E / 07E		

Cover Type

A = Aspen	J = Jack Pine	O = Oak	U = Upland Brush
B = Paper Birch	K = Rock	P = Lowland Poplar	UM = Upland Mix Forest
C = Cedar	L = Lowland Brush	Q = Mixed Swamp Conifer	V = Bog or Marsh
D = Treed Bog	LM = Lowland Mix Forest	R = Red Pine	W = White Pine
E = Swamp Hardwoods	M = Maple, Beech, Birch	S = Black Spruce	X = Non Stocked
F = Spruce/Fir	MC = Mixed Conifer	T = Tamarack	Y = Sand
G = Grass	MD = Mixed Deciduous		Z = Water
H = Hemlock	N = Marsh		

Density

0 = Non Stocked	5 = Pole Timber Medium
1 = Seedling Sapling Poor	6 = Pole Timber Well
2 = Seedling Sapling Medium	7 = Saw Timber Poor
3 = Seedling Sapling Well	8 = Saw Timber Medium
4 = Pole Timber Poor	9 = Saw Timber Well

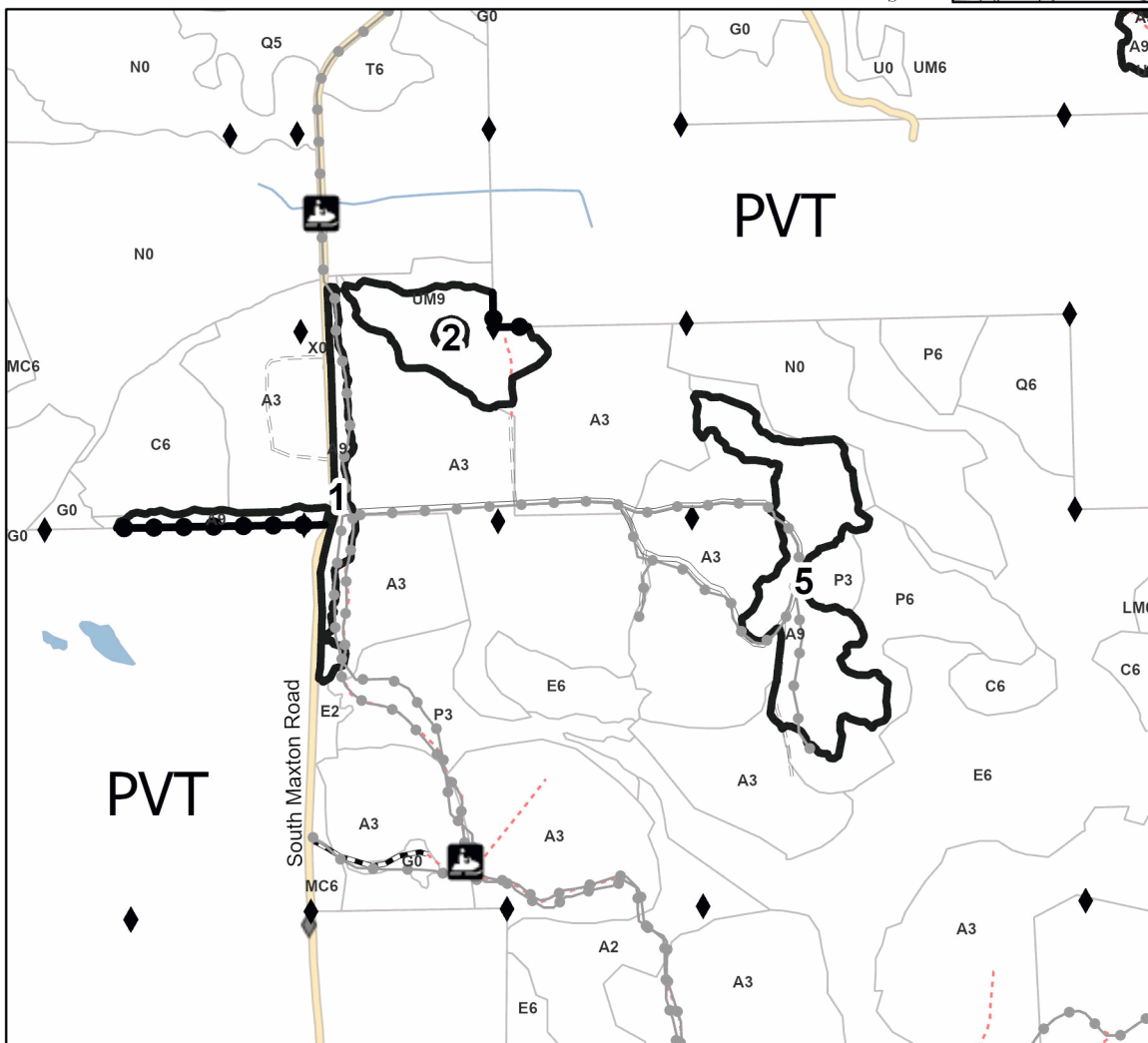
Locator Map (1:200,000)



DI Drumming on Drummond

329.6 Acres

PU #	Acres	PU #	Acres	PU #	Acres
1	9.7	6	9.6	11	26.1
2	14.1	7	58.4	12	31.9
3	33.9	8	19.7	13	39
4	20.3	9	11.6		
5	28	10	27.3		



Legend

- Recreational Trail
- Survey Grade Corner
- Field Grade Corner
- Private Line (Blue)
- Against State (Red)
- Primary Forest Road
- Secondary Forest Road
- Forest Access Route
- Administrative Access Only
- Non-DNR Road
- Stand

Use QR Code to open Map in App





TIMBER SALE MAP

This information provided by authority of Part 525, 1994 PA 451, as amended.

Sale Number
45-005-24

Date
08/26/2024

Forest Management Unit
Sault Ste Marie Mgt Unit

County
Chippewa

Mapped By: Contractor/Sault Unit
Cruised By: Contractor/Sault Unit

Scale
1:46,948

Page
6

Of
6

Township | Range | Section(s) and Subdivision(s) | Sec. 6 W1/2NW,E1/2SE; SWNW,NENE,SW,SESE; Sec. 3 SENW,NWNE,S1/2NE,NWSE; Sec. 31 SWSW; Sec. 35 SWSE; Sec. 36 S1/2SW; Sec. 5 W1/2SW; Sec. 1 NW,NWNE,S1/2NE,W1/2SW; Sec. 10 SENE,SE; Sec. 11 E1/2NE; Sec. 12 NWNW,N1/2SW,SESW,NWSE; Sec. 2

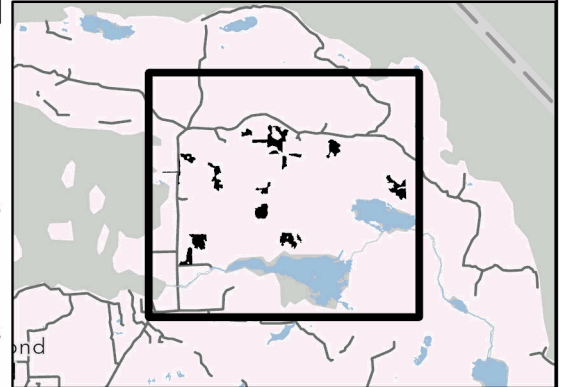
Cover Type

A = Aspen	J = Jack Pine	O = Oak	U = Upland Brush
B = Paper Birch	K = Rock	P = Lowland Poplar	UM = Upland Mix Forest
C = Cedar	L = Lowland Brush	Q = Mixed Swamp Conifer	V = Bog or Marsh
D = Treed Bog	LM = Lowland Mix Forest	R = Red Pine	W = White Pine
E = Swamp Hardwoods	M = Maple, Beech, Birch	S = Black Spruce	X = Non Stocked
F = Spruce/Fir	MC = Mixed Conifer	T = Tamarack	Y = Sand
G = Grass	MD = Mixed Deciduous		Z = Water
H = Hemlock	N = Marsh		

Density

0 = Non Stocked	5 = Pole Timber Medium
1 = Seedling Sapling Poor	6 = Pole Timber Well
2 = Seedling Sapling Medium	7 = Saw Timber Poor
3 = Seedling Sapling Well	8 = Saw Timber Medium
4 = Pole Timber Poor	9 = Saw Timber Well

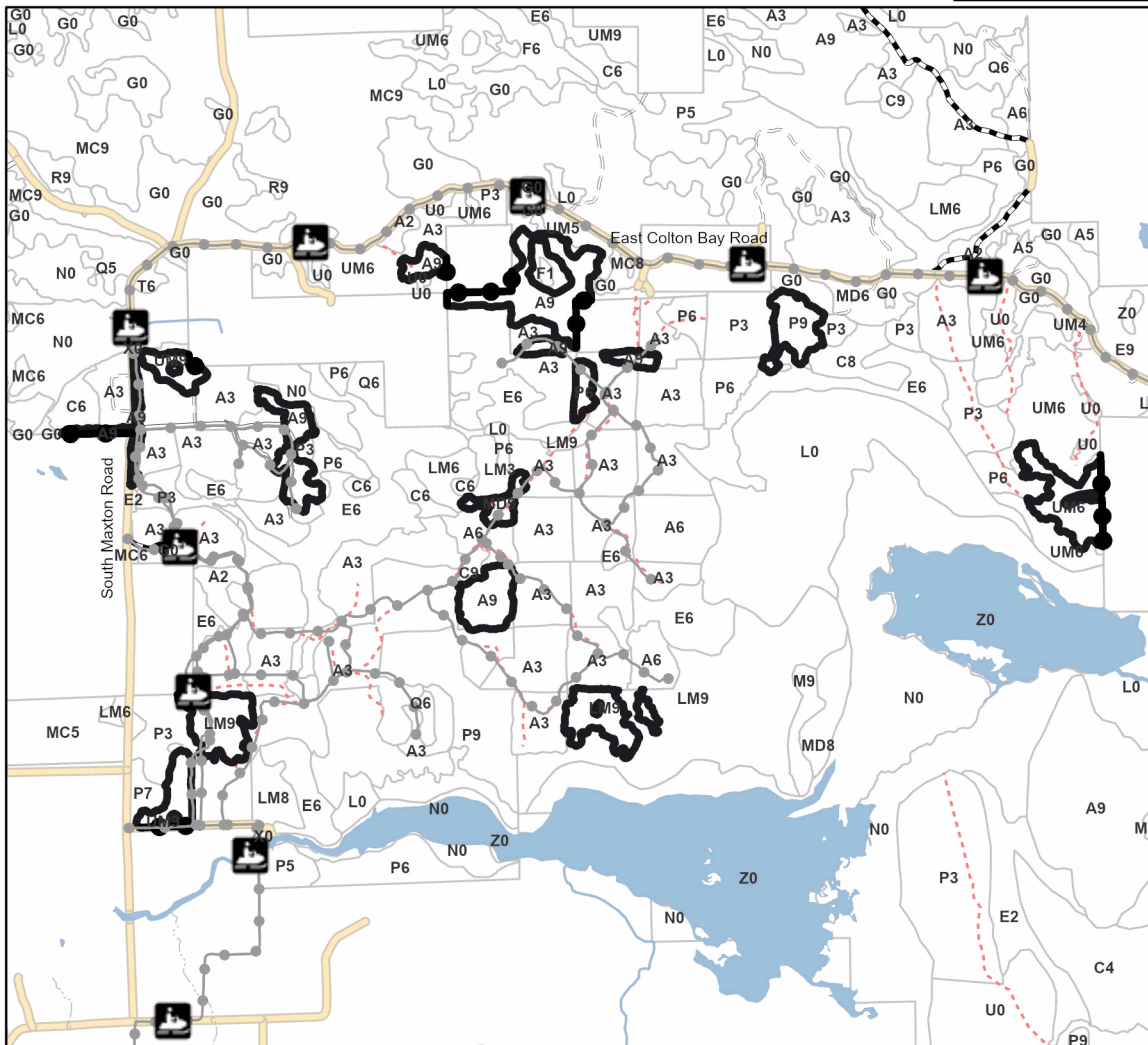
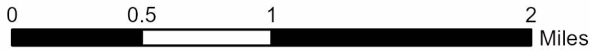
Locator Map (1:200,000)



PU #	Acres	PU #	Acres	PU #	Acres
1	9.7	6	9.6	11	26.1
2	14.1	7	58.4	12	31.9
3	33.9	8	19.7	13	39
4	20.3	9	11.6		
5	28	10	27.3		

DI Drumming on Drummond

329.6 Acres



Legend

- Against State (Red)
- Stand
- Private Line (Blue)
- Recreational Trail
- Primary Forest Road
- Secondary Forest Road
- Forest Access Route
- Administrative Access Only
- Non-DNR Road

Use QR Code to open Map in App

